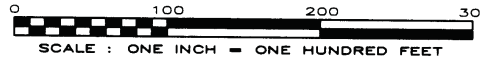


CERTIFIED SURVEY MAP No. 11334

PART OF LOTS 1 THROUGH 9, AND 13, AND ALL OF LOTS 14 THROUGH 18, ALL IN BLOCK 281, ALSO PART OF LOTS 1, 2, AND 3, ALL IN BLOCK 281, ALSO PART OF VACATED SECOND STREET, AND PART OF VACATED MORRIS STREET, ALL IN FARWELL'S REPLAT AND ADDITION TO THE VILLAGE OF MADISON, ALSO LOCATED IN PART OF THE SOUTHEAST QUARTER (¼) OF THE SOUTHWEST QUARTER (¼) OF SECTION 06, AND THE NORTHEAST QUARTER (¼) OF THE NORTHWEST QUARTER (¼) OF SECTION 07, ALL IN TOWNSHIP 07 NORTH, RANGE 10 EAST, CITY OF MADISON, DANE COUNTY, WISCONSIN

LINE TABLE

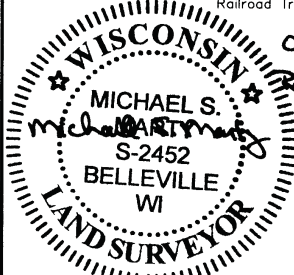
NUMBER	DIRECTION	DISTANCE
L1	S 89°56'05" W	422.12'
L2	S 89°56'05" W	128.30'
L3	S 89°56'05" W	1797.12'
L4	S 43°47'47" W	48.90'
L5	N 46°12'22" W (N 47°01'09" W)	1.07'
L6	S 54°58'09" W	34.59'
L7	N 56°58'59" W	32.44'
L8	N 46°12'22" W (N 47°01'09" W)	114.76'
L9	N 44°21'59" E (N 43°32'29" E)	66.09'
L10	S 46°18'02" E (S 47°09'53" E)	25.19'
L11	S 46°26'55" E (S 47°02'29" E)	76.41'
L12	S 43°47'47" W (S 42°57'31" W)	4.00'
L13	S 46°12'13" E (S 47°02'29" E)	90.00'
L14	N 46°12'22" W (N 47°01'09" W)	124.15'
L15	S 36°32'07" W (S 35°42'51" W)	40.32'
L16	N 44°21'59" E	66.54'
L17	N 36°32'07" E	739.58'
L18	N 46°12'22" W (N 47°01'09" W)	125.22'
L19	N 46°13'36" W	161.61'



LOT AREA TABLE

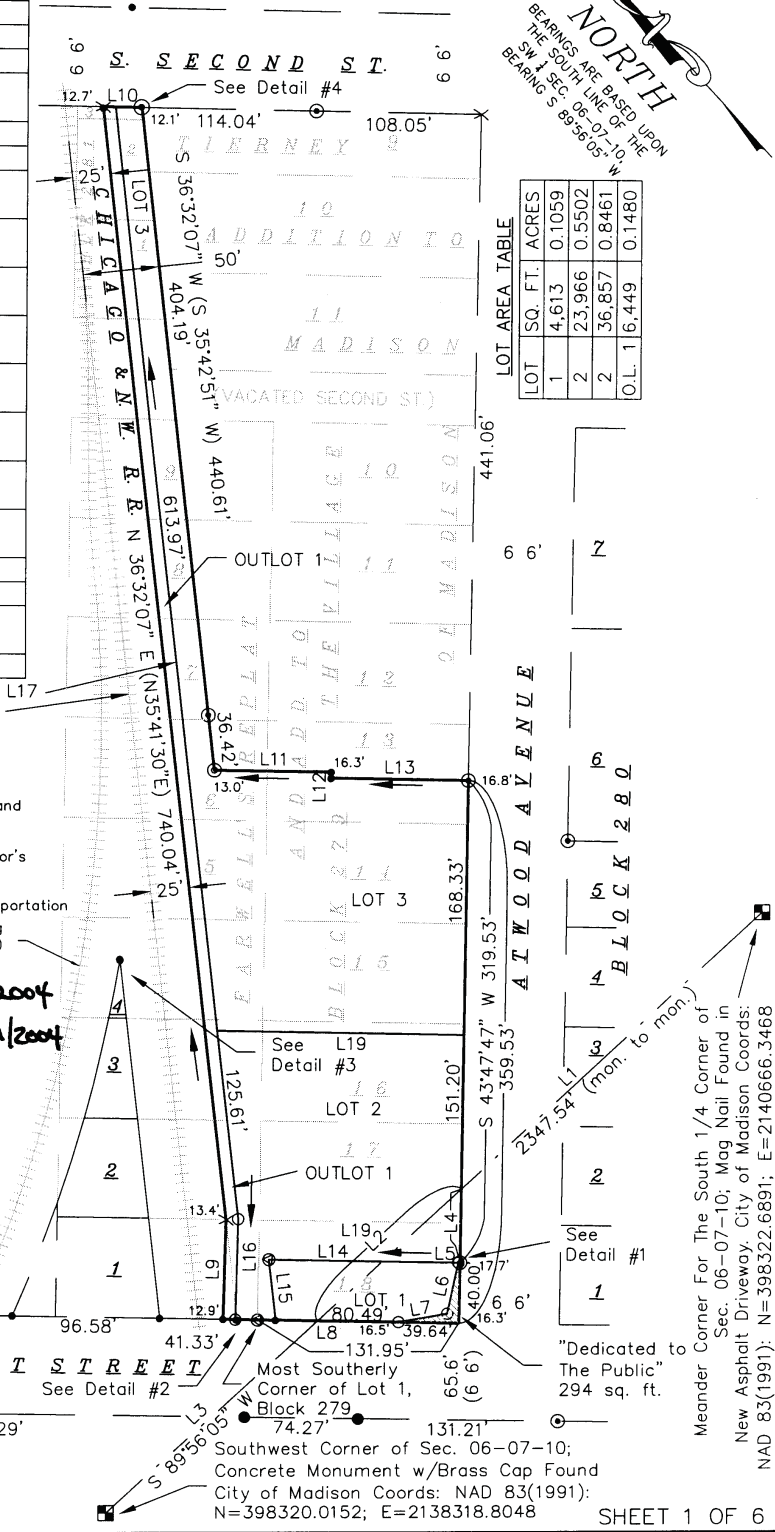
LOT	SQ. FT.	ACRES
1	4,613	0.1059
2	23,966	0.5502
2	36,857	0.8461
O.L.	6,449	0.1480

- NOTES:
- Centerline of Existing Main Track Chicago & Northwestern Railroad
 - See sheet 2 for existing improvements.
 - See sheet 3 for existing easements.
 - See sheet 4 for legend, additional notes, and details.
 - See sheet 5 for legal description & surveyor's certificate.
 - Outlot 1 is to be reserved for future transportation purposes.
 - Centerline of Existing Railroad Tracks (typ.)



MAP NO. 11334
DOCUMENT NO. 4024297
VOLUME 68 PAGES 291

36.01' 3/4" Pipe
65.6' (6'6")
Date: October 26, 2004
Paper Space Plot View: Sheet1
PROJECTS\BSE493\SURVEY\CSBSE493.DWG



"Dedicated to The Public" 294 sq. ft.
Meander Corner For The South 1/4 Corner of Sec. 06-07-10; Mag Nail Found in New Asphalt Driveway, City of Madison Coords: NAD 83(1991): N=398322.6891; E=2140666.3468
NAD 83(1991): N=398320.0152; E=2138318.8048