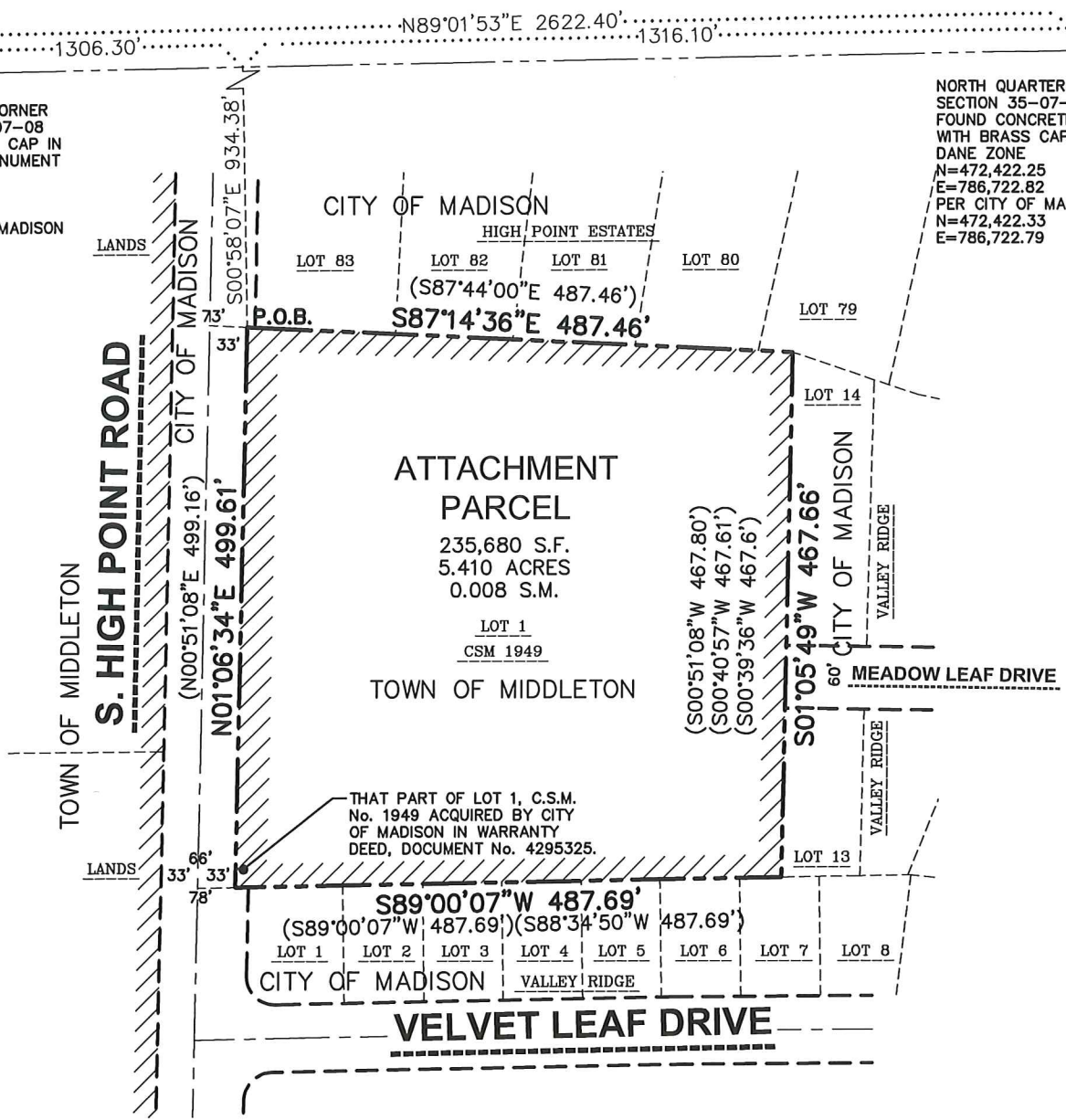


File: I:\2021\2110434\DWG\Survey Sheets\2110434 Attachment.dwg Layout: Attachment User: jk Plotted: Nov 30, 2022 - 9:05am

NORTHWEST CORNER  
SECTION 35-07-08  
FOUND BRASS CAP IN  
CONCRETE MONUMENT  
DANE ZONE  
N=472,377.92  
E=784,100.79  
PER CITY OF MADISON  
N=472,377.80  
E=784,100.61

NORTH QUARTER CORNER  
SECTION 35-07-08  
FOUND CONCRETE MONUMENT  
WITH BRASS CAP BROKEN OFF  
DANE ZONE  
N=472,422.25  
E=786,722.82  
PER CITY OF MADISON  
N=472,422.33  
E=786,722.79



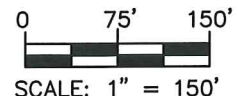
THAT PART OF LOT 1, C.S.M.  
No. 1949 ACQUIRED BY CITY  
OF MADISON IN WARRANTY  
DEED, DOCUMENT No. 4295325.

**LEGEND**

- GOVERNMENT CORNER
- ANNEXATION BOUNDARY
- CENTERLINE
- RIGHT-OF-WAY LINE
- PLATTED LOT LINE
- SECTION LINE
- EXISTING CORPORATE LIMITS OF THE CITY OF MADISON
- ( ) DENOTES RECORD DATA DEPICTING THE SAME LINE ON THE GROUND AS RETRACED BY THIS SURVEY

**NOTES**

1. BEARINGS ARE REFERENCED TO THE WISCONSIN COUNTY COORDINATE SYSTEM, DANE COUNTY. THE NORTH LINE OF THE NORTHWEST QUARTER OF SECTION 35-07-08, BEARS N89°01'53"E.



**JSD**  
MADISON REGIONAL OFFICE  
161 HORIZON DRIVE, SUITE 101  
VERONA, WISCONSIN 53593  
P. 608-848-5060

PROJECT:  
**HOPE & A FUTURE**  
  
3440 S. HIGH POINT ROAD  
MADISON, WI

SHEET TITLE:  
**EXHIBIT B  
SCALE MAP  
ATTACHMENT**

PROJECT NUMBER:  
21-10434  
DRAWN BY: CHECKED BY:  
JK TJB  
DATE:  
NOVEMBER 07, 2022

SHEET NUMBER:  
**1**