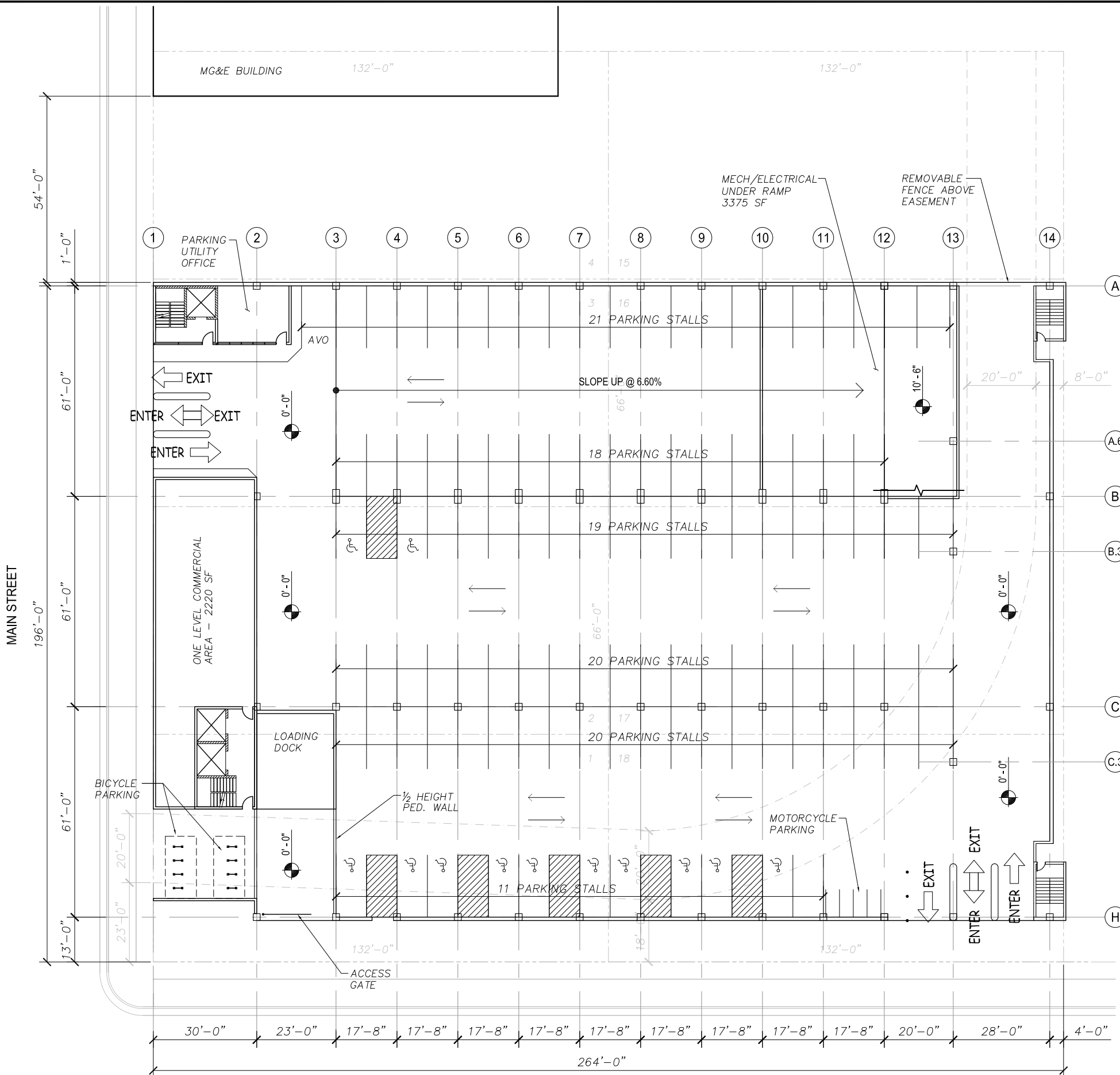


File: i:\2013\135576\Main - Livingston Ramp Layout (3-Boy) (Full Commercial).dwg Layout: ML-1 (3 BAY) User: abaker Plotted: Feb 05, 2016 - 9:16am Xref's:



109 PARKING STALLS
12 HANDICAP STALLS
96 REGULAR STALLS
1 AUTHORIZED VEHICLE ONLY

JSD Professional Services, Inc.
• Engineers • Surveyors • Planners

"BUILDING RELATIONSHIPS WITH A COMMITMENT TO CLIENT SATISFACTION THROUGH TRUST, QUALITY AND EXPERIENCE"

- CIVIL ENGINEERING
- SURVEYING & MAPPING
- CONSTRUCTION SERVICES
- WATER RESOURCES
- PLANNING & DEVELOPMENT
- TRANSPORTATION ENGINEERING
- STRUCTURAL ENGINEERING
- LANDSCAPE ARCHITECTURE

MADISON REGIONAL OFFICE
161 HORIZON DRIVE, SUITE 101
VERONA, WISCONSIN 53593
608.848.5060 PHONE | 608.848.2255 FAX
MADISON | MILWAUKEE
KENOSHA | APPLETON
www.jsdinc.com

SERVICES PROVIDED TO:
**CITY OF MADISON,
PARKING
UTILITY**



215 MARTIN LUTHER KING JR. BLVD
MADISON, WISCONSIN 53701-2986

PROJECT:
**CAPITOL EAST
PARKING RAMP
OPTION 2A**

PROJECT LOCATION:
CITY OF MADISON

JSD PROJECT NO.: 13-5576

SEAL/SIGNATURE:

**CONCEPT
DRAWING**

ALTHOUGH EVERY EFFORT HAS BEEN MADE IN PREPARING THESE PLANS AND CHECKING THEM FOR ACCURACY, THE CONTRACTOR AND SUBCONTRACTORS MUST CHECK ALL DETAIL AND DIMENSIONS OF THEIR TRADE AND BE RESPONSIBLE FOR THE SAME.

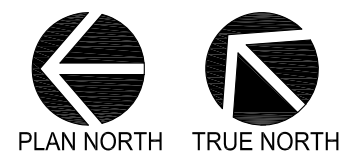
DESIGN: JJE 12/1/2015
DRAWN: PGB 12/1/2015
APPROVED:

PLAN MODIFICATIONS:	DATE:



Toll Free (800) 242-8511
Milwaukee Area (414) 259-1181
Hearing Impaired TDD (800) 542-2289
www.DiggersHotline.com

SHEET TITLE:
LEVEL ONE

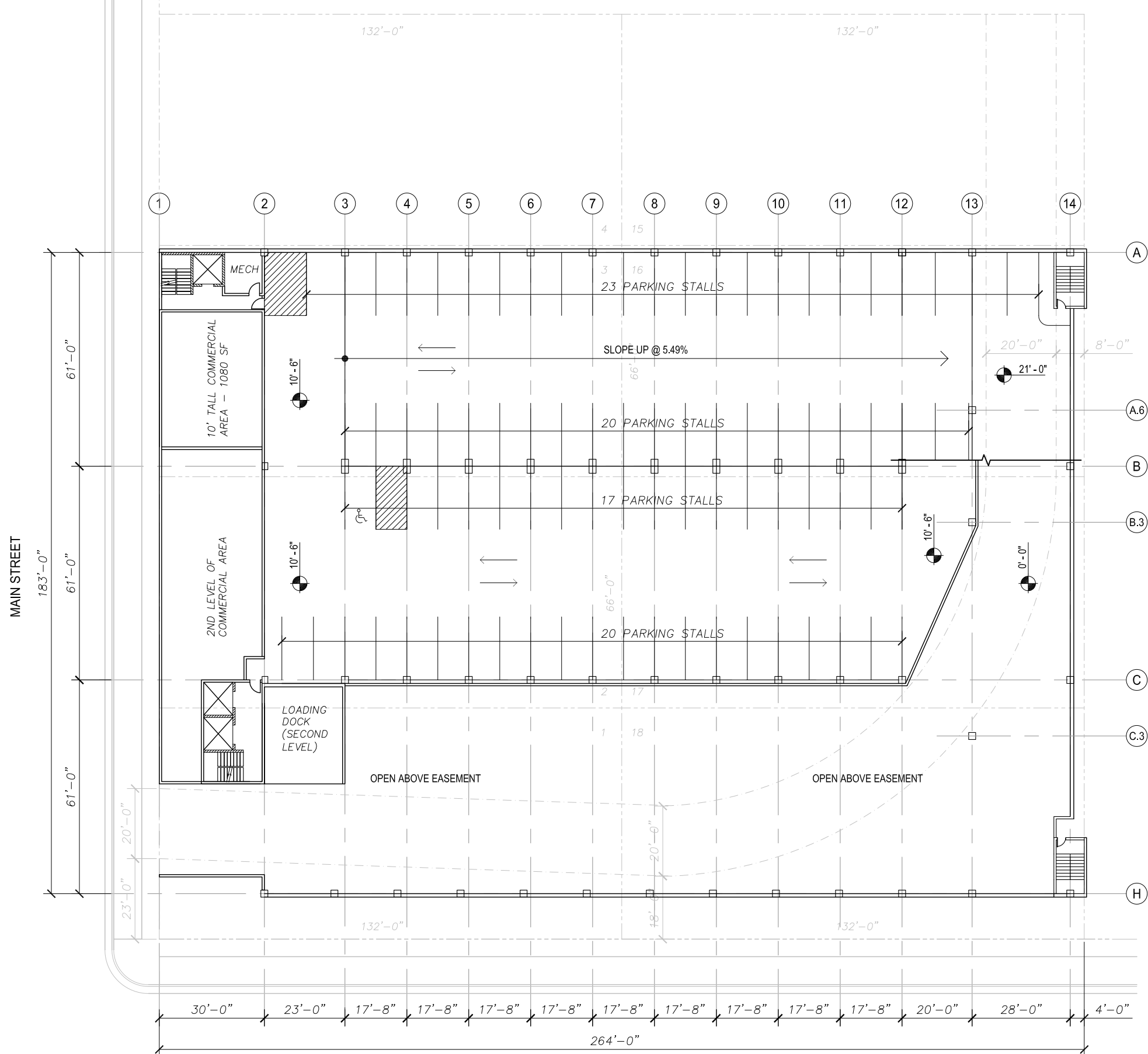


SHEET NUMBER:
ML-1

DRAWING FOR CONCEPTUAL PURPOSES ONLY

THESE PLANS AND DESIGNS ARE COPYRIGHT PROTECTED AND MAY NOT BE USED IN WHOLE OR IN PART WITHOUT THE WRITTEN CONSENT OF JSD PROFESSIONAL SERVICES, INC.

File: i:\2013\135576\Main - Livingston Ramp Layout (3-Bay) (Full Commercial).dwg Layout: ML-2 (3 BAY) User: pbaker Plotted: Feb 05, 2016 - 9:17am Xref's:



SCALE: 1/32" = 1'-0"

LIVINGSTON STREET

DRAWING FOR CONCEPTUAL PURPOSES ONLY

80 PARKING STALLS
1 HANDICAP STALLS
189 TOTAL STALLS



JSD Professional Services, Inc.
Engineers • Surveyors • Planners

"BUILDING RELATIONSHIPS WITH A COMMITMENT TO CLIENT SATISFACTION THROUGH TRUST, QUALITY AND EXPERIENCE"


- CIVIL ENGINEERING
- SURVEYING & MAPPING
- CONSTRUCTION SERVICES
- WATER RESOURCES
- PLANNING & DEVELOPMENT
- TRANSPORTATION ENGINEERING
- STRUCTURAL ENGINEERING
- LANDSCAPE ARCHITECTURE

MADISON REGIONAL OFFICE
161 HORIZON DRIVE, SUITE 101
VERONA, WISCONSIN 53593
608.848.5060 PHONE | 608.848.2255 FAX

MADISON | MILWAUKEE
KENOSHA | APPLETON
www.jsdinc.com

SERVICES PROVIDED TO:

CITY OF MADISON, PARKING UTILITY



215 MARTIN LUTHER KING JR. BLVD
MADISON, WISCONSIN 53701-2986

PROJECT:
CAPITOL EAST PARKING RAMP OPTION 2A

PROJECT LOCATION:
CITY OF MADISON

JSD PROJECT NO.: 13-5576

SEAL/SIGNATURE:

CONCEPT DRAWING

ALTHOUGH EVERY EFFORT HAS BEEN MADE IN PREPARING THESE PLANS AND CHECKING THEM FOR ACCURACY, THE CONTRACTOR AND SUBCONTRACTORS MUST CHECK ALL DETAIL AND DIMENSIONS OF THEIR TRADE AND BE RESPONSIBLE FOR THE SAME.

DESIGN: JJE 12/1/2015
DRAWN: PGB 12/1/2015
APPROVED:

PLAN MODIFICATIONS:	DATE:

DIGGERS HOTLINE

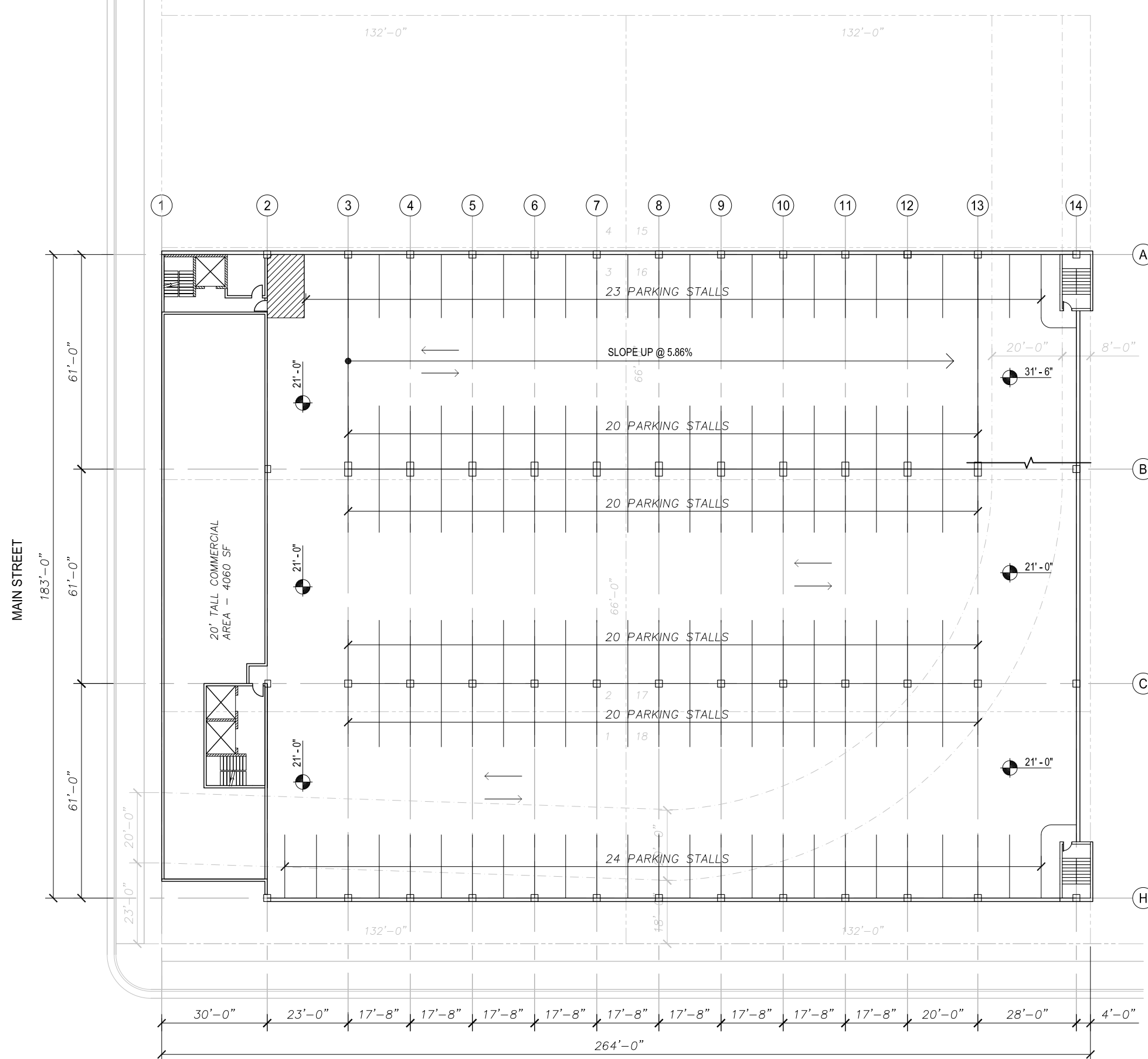
Toll Free (800) 242-8511
Milwaukee Area (414) 259-1181
Hearing Impaired TDD (800) 542-2289
www.DiggersHotline.com

SHEET TITLE:
LEVEL TWO

SHEET NUMBER:
ML-2

THESE PLANS AND DESIGNS ARE COPYRIGHT PROTECTED AND MAY NOT BE USED IN WHOLE OR IN PART WITHOUT THE WRITTEN CONSENT OF JSD PROFESSIONAL SERVICES, INC.

File: i:\2013\135576\Main - Livingston Ramp Layout (3-Bay) (Full Commercial).dwg Layout: ML-3 (3 BAY) User: pbaker Plotted: Feb 04, 2016 - 5:23pm Xref's:



SCALE: 1/32" = 1'-0"

LIVINGSTON STREET

DRAWING FOR CONCEPTUAL PURPOSES ONLY

127 PARKING STALLS
316 TOTAL STALLS

JSD Professional Services, Inc.
Engineers • Surveyors • Planners

"BUILDING RELATIONSHIPS WITH A COMMITMENT TO CLIENT SATISFACTION THROUGH TRUST, QUALITY AND EXPERIENCE"


- CIVIL ENGINEERING
- SURVEYING & MAPPING
- CONSTRUCTION SERVICES
- WATER RESOURCES
- PLANNING & DEVELOPMENT
- TRANSPORTATION ENGINEERING
- STRUCTURAL ENGINEERING
- LANDSCAPE ARCHITECTURE

MADISON REGIONAL OFFICE
 161 HORIZON DRIVE, SUITE 101
 VERONA, WISCONSIN 53593
 608.848.5060 PHONE | 608.848.2255 FAX

MADISON | MILWAUKEE
 KENOSHA | APPLETON
 www.jsdinc.com

SERVICES PROVIDED TO:

**CITY OF MADISON,
PARKING
UTILITY**



215 MARTIN LUTHER KING JR. BLVD
 MADISON, WISCONSIN 53701-2986

PROJECT:
**CAPITOL EAST
 PARKING RAMP
 OPTION 2A**

PROJECT LOCATION:
 CITY OF MADISON

JSD PROJECT NO.: 13-5576

SEAL/SIGNATURE:

**CONCEPT
DRAWING**

ALTHOUGH EVERY EFFORT HAS BEEN MADE IN PREPARING THESE PLANS AND CHECKING THEM FOR ACCURACY, THE CONTRACTOR AND SUBCONTRACTORS MUST CHECK ALL DETAIL AND DIMENSIONS OF THEIR TRADE AND BE RESPONSIBLE FOR THE SAME.

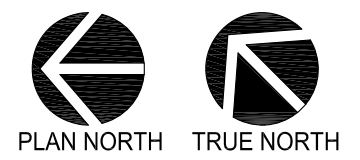
DESIGN:	JJE	12/1/2015
DRAWN:	PGB	12/1/2015
APPROVED:		
PLAN MODIFICATIONS:		DATE:

DIGGERS HOTLINE

Toll Free (800) 242-8511
 Milwaukee Area (414) 259-1181
 Hearing Impaired TDD (800) 542-2289
 www.DiggersHotline.com

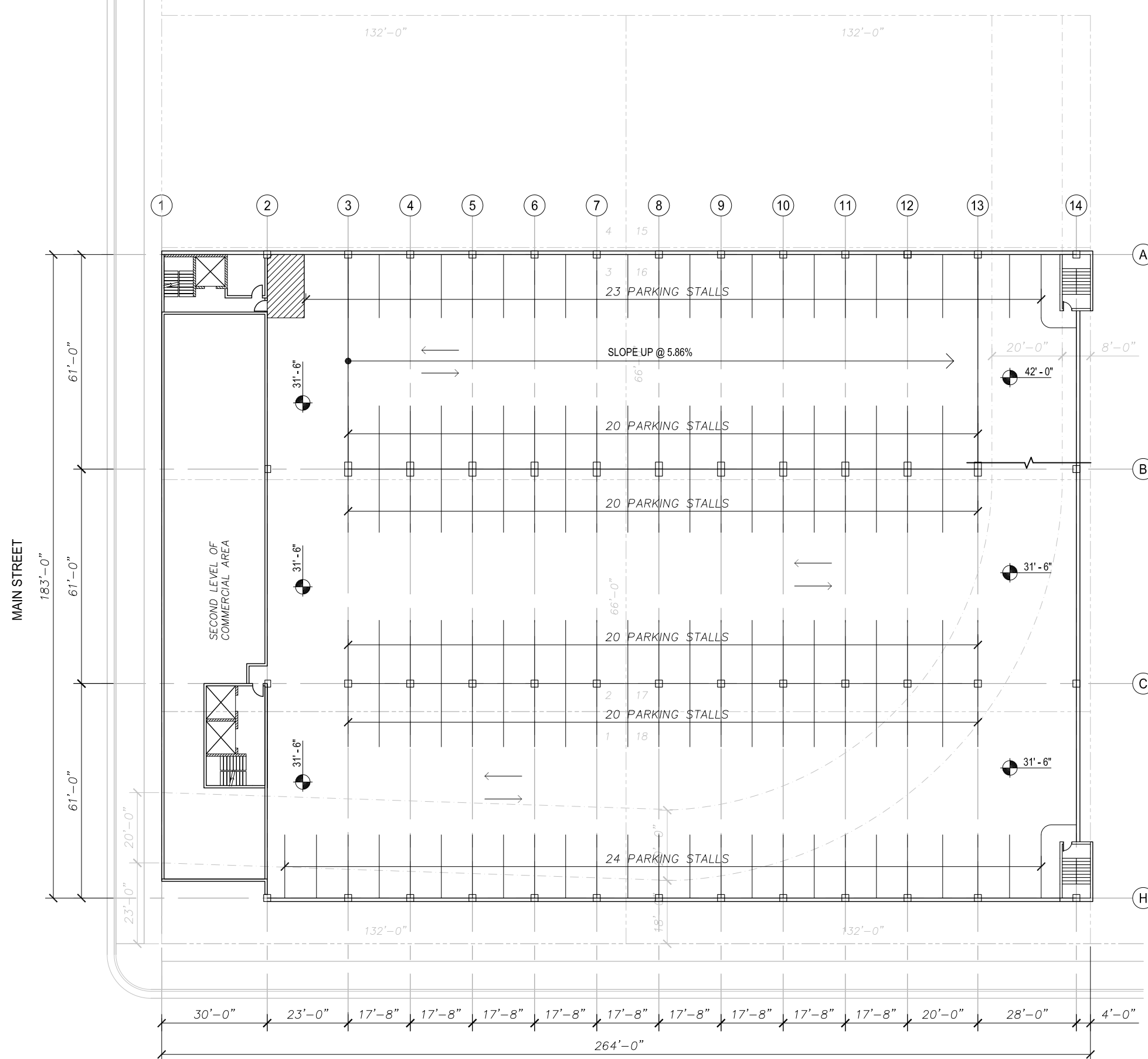
SHEET TITLE:
LEVEL THREE

SHEET NUMBER:
ML-3



THESE PLANS AND DESIGNS ARE COPYRIGHT PROTECTED AND MAY NOT BE USED IN WHOLE OR IN PART WITHOUT THE WRITTEN CONSENT OF JSD PROFESSIONAL SERVICES, INC.

File: i:\2013\135576\Main - Livingston Ramp Layout (3-Bay) (Full Commercial).dwg Layout: ML-4 (3 BAY) User: pbaker Plotted: Feb 04, 2016 - 5:24pm Xref's:

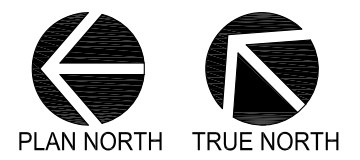


SCALE: 1/32" = 1'-0"

LIVINGSTON STREET

DRAWING FOR CONCEPTUAL PURPOSES ONLY

127 PARKING STALLS
443 TOTAL STALLS



JSD Professional Services, Inc.
 • Engineers • Surveyors • Planners

"BUILDING RELATIONSHIPS WITH A COMMITMENT TO CLIENT SATISFACTION THROUGH TRUST, QUALITY AND EXPERIENCE"

- CIVIL ENGINEERING
- SURVEYING & MAPPING
- CONSTRUCTION SERVICES
- WATER RESOURCES
- PLANNING & DEVELOPMENT
- TRANSPORTATION ENGINEERING
- STRUCTURAL ENGINEERING
- LANDSCAPE ARCHITECTURE

MADISON REGIONAL OFFICE
 161 HORIZON DRIVE, SUITE 101
 VERONA, WISCONSIN 53593
 608.848.5060 PHONE | 608.848.2255 FAX

MADISON | MILWAUKEE
 KENOSHA | APPLETON
 www.jsdinc.com

SERVICES PROVIDED TO:

CITY OF MADISON, PARKING UTILITY

215 MARTIN LUTHER KING JR. BLVD
 MADISON, WISCONSIN 53701-2986

PROJECT:
CAPTIOL EAST PARKING RAMP OPTION 2A

PROJECT LOCATION:
 CITY OF MADISON

JSD PROJECT NO.: 13-5576

SEAL/SIGNATURE:

CONCEPT DRAWING

ALTHOUGH EVERY EFFORT HAS BEEN MADE IN PREPARING THESE PLANS AND CHECKING THEM FOR ACCURACY, THE CONTRACTOR AND SUBCONTRACTORS MUST CHECK ALL DETAIL AND DIMENSIONS OF THEIR TRADE AND BE RESPONSIBLE FOR THE SAME.

DESIGN:	JJE	12/1/2015
DRAWN:	PGB	12/1/2015
APPROVED:		
PLAN MODIFICATIONS:		DATE:

DIGGERS HOTLINE

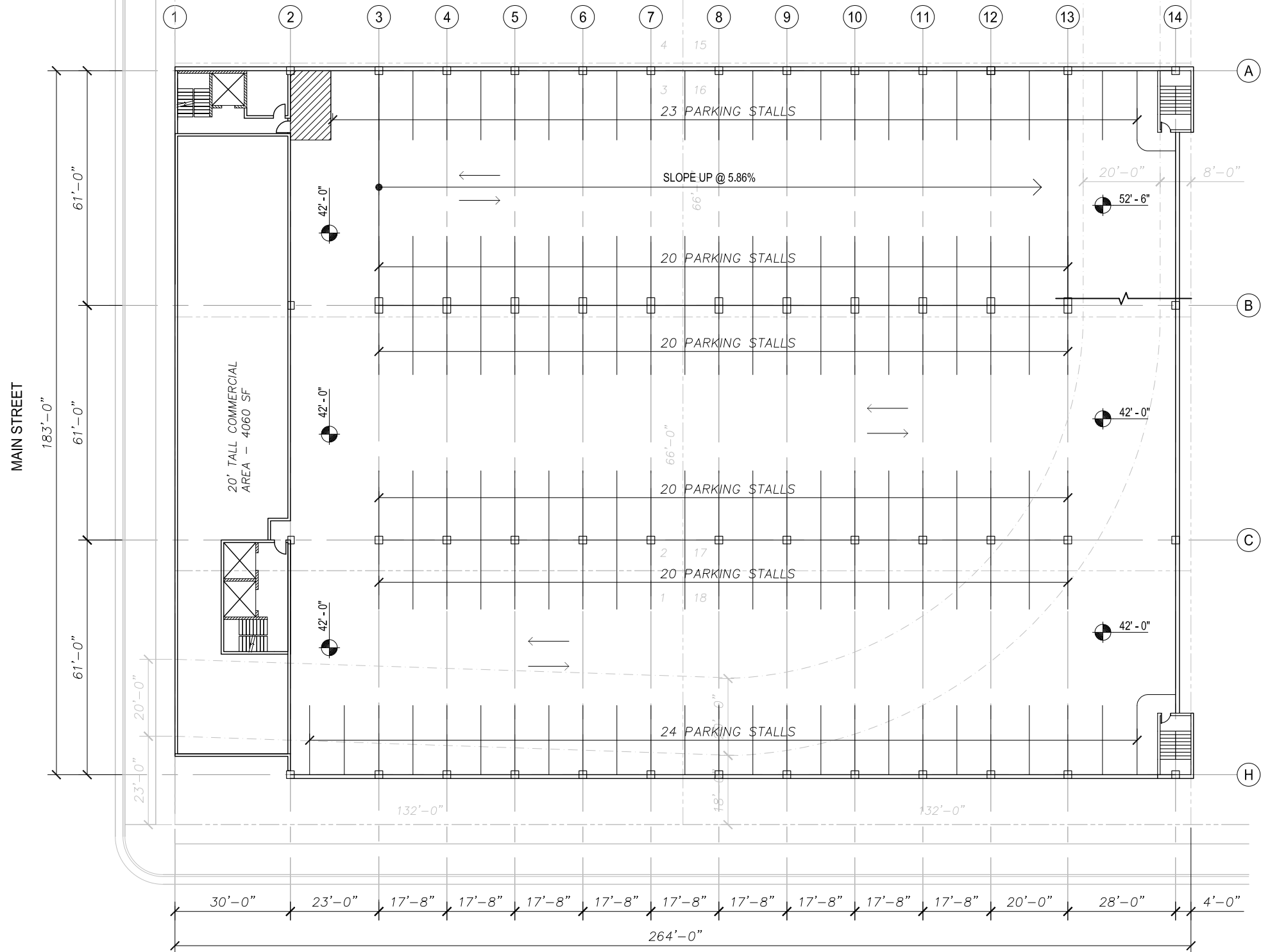
Toll Free (800) 242-8511
 Milwaukee Area (414) 259-1181
 Hearing Impaired TDD (800) 542-2289
 www.DiggersHotline.com

SHEET TITLE:
LEVEL FOUR

SHEET NUMBER:
ML-4

THESE PLANS AND DESIGNS ARE COPYRIGHT PROTECTED AND MAY NOT BE USED IN WHOLE OR IN PART WITHOUT THE WRITTEN CONSENT OF JSD PROFESSIONAL SERVICES, INC.

File: i:\2013\135576\Main - Livingston Ramp Layout (3-Bay) (Full Commercial).dwg Layout: ML-5 (3 BAY) User: pbaker Plotted: Feb 04, 2016 - 5:25pm Xref's:



SCALE: 1/32" = 1'-0"

LIVINGSTON STREET

DRAWING FOR CONCEPTUAL PURPOSES ONLY

127 PARKING STALLS
570 TOTAL STALLS

JSD Professional Services, Inc.
Engineers • Surveyors • Planners

"BUILDING RELATIONSHIPS WITH A COMMITMENT TO CLIENT SATISFACTION THROUGH TRUST, QUALITY AND EXPERIENCE"


- CIVIL ENGINEERING
- SURVEYING & MAPPING
- CONSTRUCTION SERVICES
- WATER RESOURCES
- PLANNING & DEVELOPMENT
- TRANSPORTATION ENGINEERING
- STRUCTURAL ENGINEERING
- LANDSCAPE ARCHITECTURE

MADISON REGIONAL OFFICE
161 HORIZON DRIVE, SUITE 101
VERONA, WISCONSIN 53593
608.848.5060 PHONE | 608.848.2255 FAX

MADISON | MILWAUKEE
KENOSHA | APPLETON
www.jsdinc.com

SERVICES PROVIDED TO:

**CITY OF MADISON,
PARKING
UTILITY**



215 MARTIN LUTHER KING JR. BLVD
MADISON, WISCONSIN 53701-2986

PROJECT:
**CAPITOL EAST
PARKING RAMP
OPTION 2A**

PROJECT LOCATION:
CITY OF MADISON

JSD PROJECT NO.: 13-5576

SEAL/SIGNATURE:

**CONCEPT
DRAWING**

ALTHOUGH EVERY EFFORT HAS BEEN MADE IN PREPARING THESE PLANS AND CHECKING THEM FOR ACCURACY, THE CONTRACTOR AND SUBCONTRACTORS MUST CHECK ALL DETAIL AND DIMENSIONS OF THEIR TRADE AND BE RESPONSIBLE FOR THE SAME.

DESIGN:	JJE	12/1/2015
DRAWN:	PGB	12/1/2015
APPROVED:		

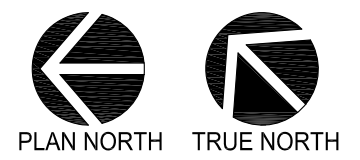
PLAN MODIFICATIONS:	DATE:

DIGGERS HOTLINE

Toll Free (800) 242-8511
Milwaukee Area (414) 259-1181
Hearing Impaired TDD (800) 542-2289
www.DiggersHotline.com

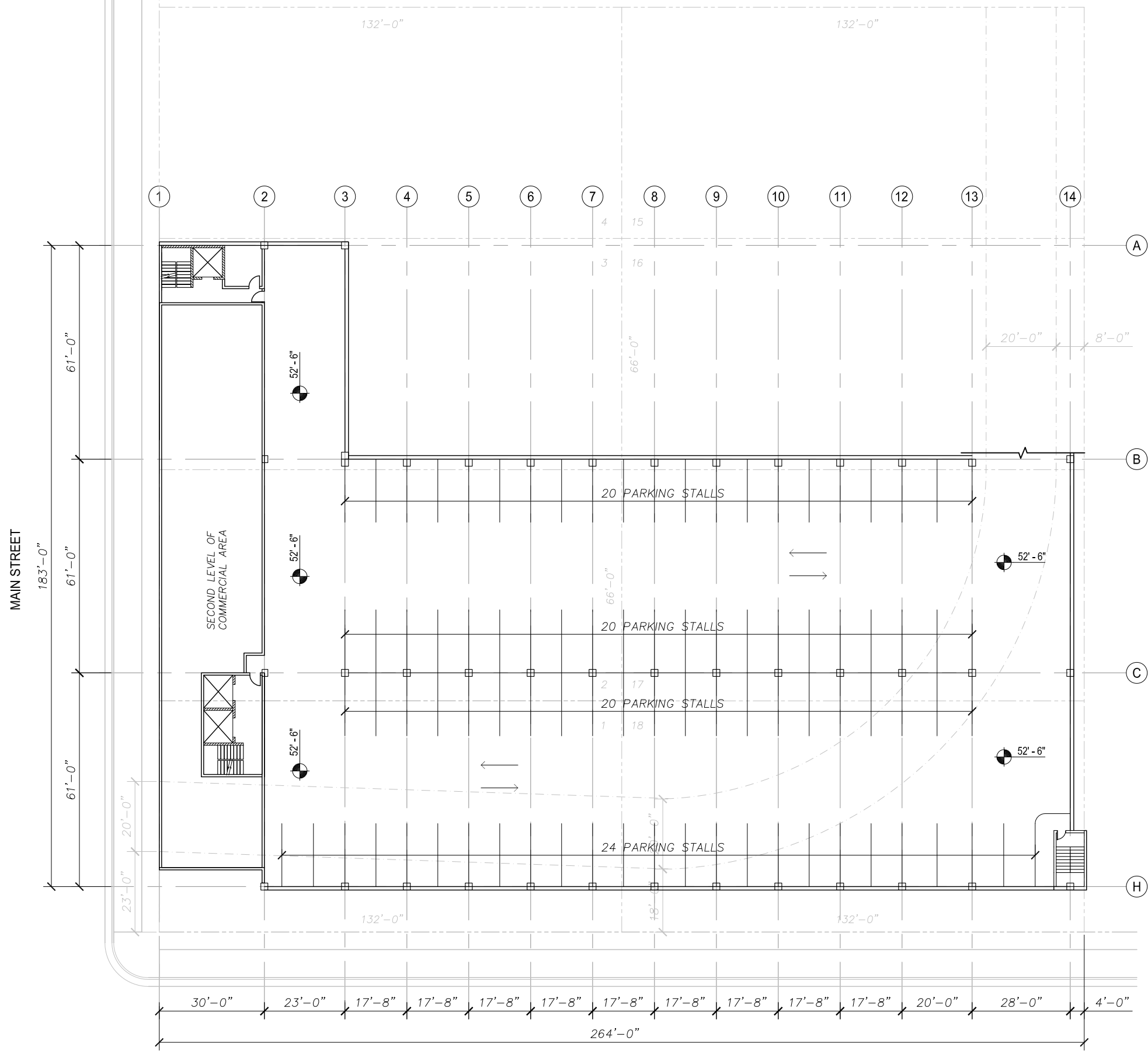
SHEET TITLE:
LEVEL FIVE

SHEET NUMBER:
ML-5



THESE PLANS AND DESIGNS ARE COPYRIGHT PROTECTED AND MAY NOT BE USED IN WHOLE OR IN PART WITHOUT THE WRITTEN CONSENT OF JSD PROFESSIONAL SERVICES, INC.

File: i:\2013\135576\Main - Livingston Ramp Layout (3-Bay) (Full Commercial).dwg Layout: ML-6 (3 BAY) User: pbaker Plotted: Feb 04, 2016 - 5:27pm Xref's:



JSD Professional Services, Inc.
 • Engineers • Surveyors • Planners

"BUILDING RELATIONSHIPS WITH A COMMITMENT TO CLIENT SATISFACTION THROUGH TRUST, QUALITY AND EXPERIENCE"


- CIVIL ENGINEERING
- SURVEYING & MAPPING
- CONSTRUCTION SERVICES
- WATER RESOURCES
- PLANNING & DEVELOPMENT
- TRANSPORTATION ENGINEERING
- STRUCTURAL ENGINEERING
- LANDSCAPE ARCHITECTURE

MADISON REGIONAL OFFICE
 161 HORIZON DRIVE, SUITE 101
 VERONA, WISCONSIN 53593
 608.848.5060 PHONE | 608.848.2255 FAX

MADISON | MILWAUKEE
 KENOSHA | APPLETON
 www.jsdinc.com

SERVICES PROVIDED TO:

CITY OF MADISON, PARKING UTILITY



215 MARTIN LUTHER KING JR. BLVD
 MADISON, WISCONSIN 53701-2986

PROJECT:
CAPTIOLE EAST PARKING RAMP OPTION 2A

PROJECT LOCATION:
 CITY OF MADISON

JSD PROJECT NO.: 13-5576

SEAL/SIGNATURE:

CONCEPT DRAWING

ALTHOUGH EVERY EFFORT HAS BEEN MADE IN PREPARING THESE PLANS AND CHECKING THEM FOR ACCURACY, THE CONTRACTOR AND SUBCONTRACTORS MUST CHECK ALL DETAIL AND DIMENSIONS OF THEIR TRADE AND BE RESPONSIBLE FOR THE SAME.

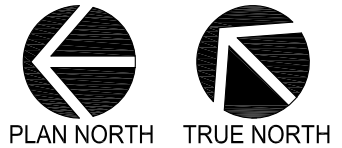
DESIGN:	JJE	12/1/2015
DRAWN:	PGB	12/1/2015
APPROVED:		
PLAN MODIFICATIONS:		DATE:

DIGGERS HOTLINE

Toll Free (800) 242-8511
 Milwaukee Area (414) 259-1181
 Hearing Impaired TDD (800) 542-2289
 www.DiggersHotline.com

SHEET TITLE:
LEVEL SIX

SHEET NUMBER:
ML-6



THESE PLANS AND DESIGNS ARE COPYRIGHT PROTECTED AND MAY NOT BE USED IN WHOLE OR IN PART WITHOUT THE WRITTEN CONSENT OF JSD PROFESSIONAL SERVICES, INC.