

Time: 9/24/2019 1:38:44 PM

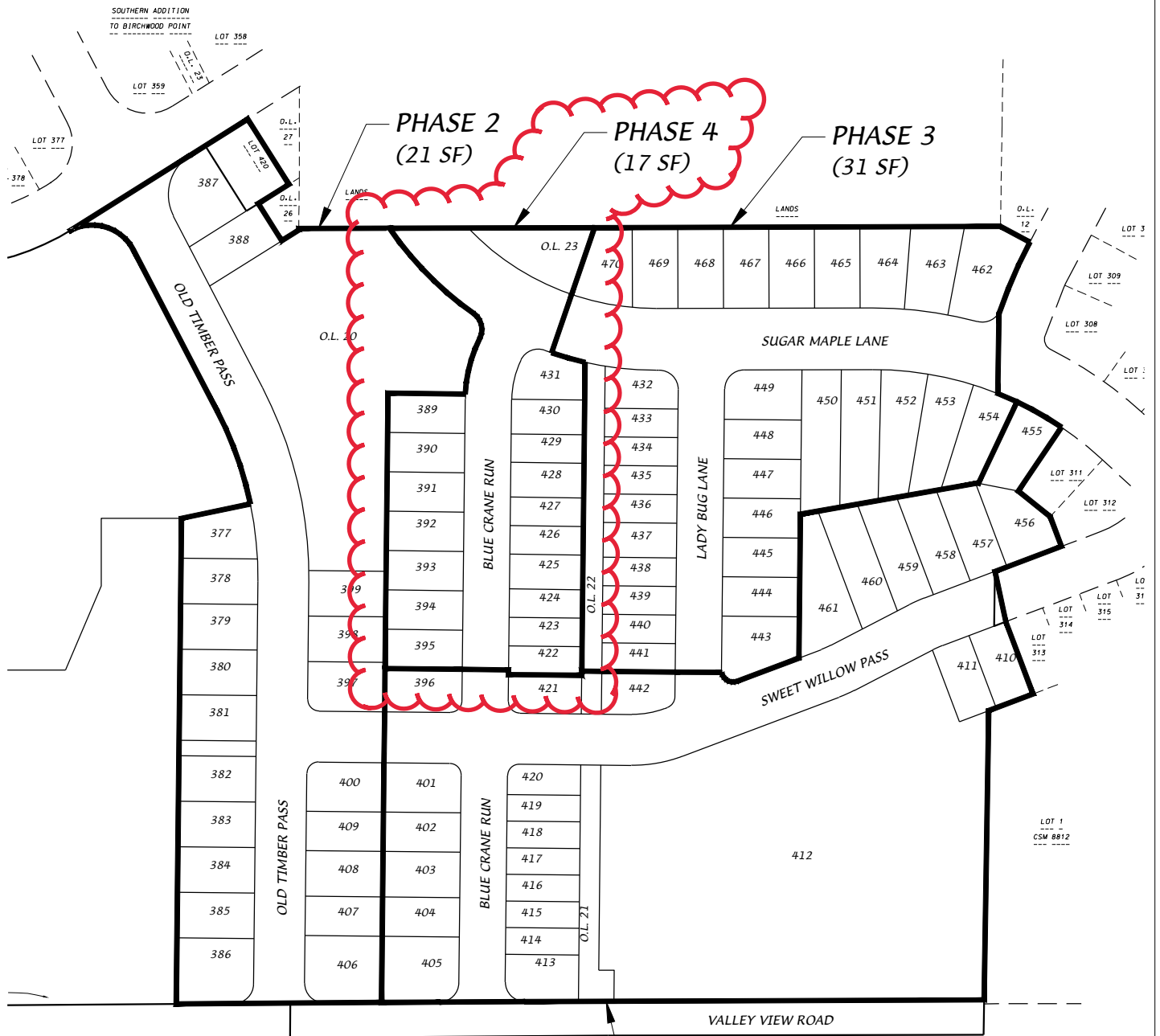
Session: C:\GTViewer_Sessions\Deming & Fourier SW.gts

City of Madison, WI - GIS/Mapping data

Printed By: entnt

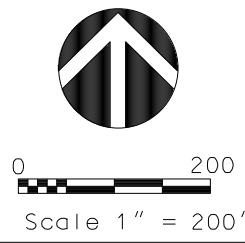
Disclaimer: The City makes no representation about the accuracy of these records and shall not be liable for any damages

Western Addition to 1000 Oaks



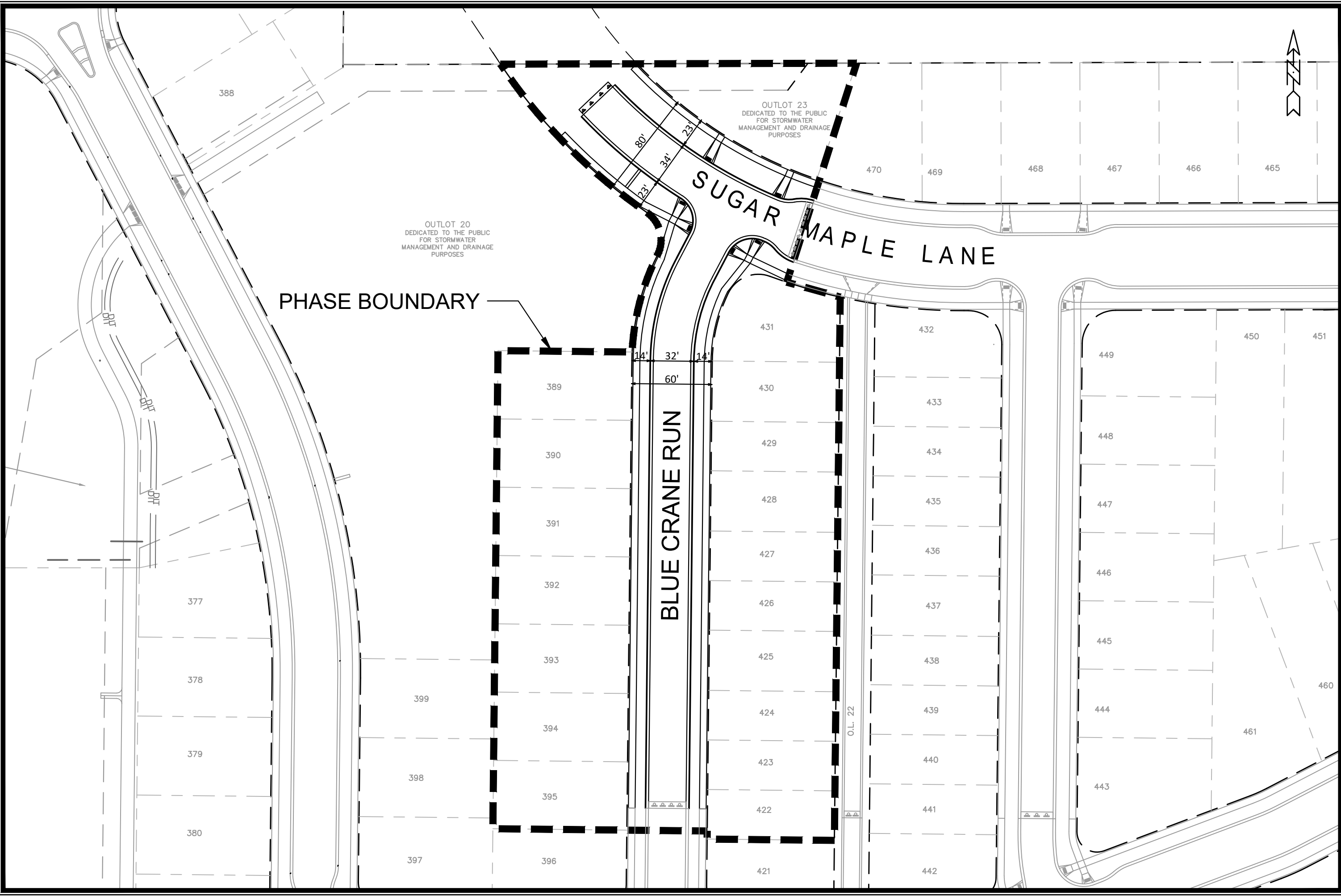
PHASE 1
(17 SF, 8 TWINS & 1 MF)

D'ONOFRIO KOTTKE AND ASSOCIATES, INC.
 7530 Westward Way, Madison, WI 53717
 Phone: 608.833.7530 • Fax: 608.833.1089
 YOUR NATURAL RESOURCE FOR LAND DEVELOPMENT



DATE: 08-03-22
 F.N.: 20-05-144
 REV.


DRAWN BY: DRH
 U:/USER/1807115/DRAWINGS/PHASE MAP.DWG



MARK	REVISION	DATE	BY
14345	14345	11/25/2023	BPW

14345
MADISON, WI
CONTRACT NO: 9221

BOARD OF PUBLIC WORKS EXHIBIT
WESTERN ADDITION TO 1000 OAKS - PHASE 4
M:\DESIGN\Projects\14345\CAD\Streets\14345EN-Street\Network.dwg



14345
BPW