



January 12, 2024

Sent Via Email

lbrown@cityofmadison.com

Mr. Ian Brown
City of Madison Urban Forestry
Madison Streets Division
1402 Wingra Creek Parkway
Madison WI 53715

Subject: Permit for Utility Line Clearance Pruning and Removal in the Public Right-of-Way

Dear Mr. Brown:

Madison Gas and Electric Company (MGE) hereby applies for a permit to conduct utility line clearance operations including pruning and removal of trees in the public right-of-way of any street, alley, highway, or other area under the jurisdiction of the City of Madison.

MGE has an obligation to perform tree pruning under Chapter PSC 114 of the Wisconsin Administrative Code. This code adopts the National Electric Safety Code for Wisconsin which provides in Section 218 that trees interfering with ungrounded electric supply conductors must be pruned or removed. MGE is required by Chapter PSC 114, adopting this code, to maintain vegetation management services to prevent serious safety hazards caused by trees becoming intertwined with the electrical conductor.

Each tree located in the public right-of-way will be assessed to determine necessary pruning dosage to achieve five years of regrowth clearance. MGE Forestry representatives will contact City Forestry if their limited visual assessment indicates a hazard tree may be present; all hazard trees will be discussed with City Forestry before work begins.

MGE and its contractors will prune or remove trees in accordance with the American National Standards Institute (ANSI) A300 and ANSI Z133.1 tree care operation standards and in accordance with the written guidelines and directives of the City Forester.

Mr. Ian Brown
Page 2
January 12, 2024

Line clearance pruning of City trees in the affected areas will begin following the approval of the Habitat Stewardship Subcommittee and City Forester. The affected areas within the City of Madison proposed for line clearance operations are listed by street name and block numbers. See Exhibit 1.

Sincerely,

A handwritten signature in black ink, appearing to read 'Tim Meisenheimer', with a large, sweeping flourish extending to the right.

Tim Meisenheimer
Forestry Supervisor

bw

Attachment

EXHIBIT 1
2024 Tree Trimming Block Numbers
and Street Names

0 BLOCK OF BLACK OAK	1000 BLOCK OF S THOMPSON	1400 BLOCK OF E DAYTON
0 BLOCK OF CELIA	1000 BLOCK OF SEMINOLE	1400 BLOCK OF ELLEN
0 BLOCK OF CHIPPEWA	1000 BLOCK OF SHASTA	1400 BLOCK OF LAKE VIEW
0 BLOCK OF CRYSTAL	1000 BLOCK OF SHERMAN	1400 BLOCK OF REETZ
0 BLOCK OF E GORHAM	1000 BLOCK OF TROY	1400 BLOCK OF VONDRON
0 BLOCK OF EAST	1000 BLOCK OF TUMALO	1500 BLOCK OF DREWRY
0 BLOCK OF FLAD	1000 BLOCK OF WABAN	1500 BLOCK OF DROSTER
0 BLOCK OF HIAWATHA	1100 BLOCK OF BAY RIDGE	1500 BLOCK OF HOMBERG
0 BLOCK OF LARKIN	1100 BLOCK OF CURTIS	1500 BLOCK OF LAKE VIEW
0 BLOCK OF LORETTA	1100 BLOCK OF DROSTER	1500 BLOCK OF LEWON
0 BLOCK OF N BALDWIN	1100 BLOCK OF E DAYTON	1500 BLOCK OF MAYFIELD
0 BLOCK OF N FEW	1100 BLOCK OF E GORHAM	1500 BLOCK OF REETZ
0 BLOCK OF N FRANKLIN	1100 BLOCK OF E JOHNSON	1500 BLOCK OF STEMPEL
0 BLOCK OF N HANCOCK	1100 BLOCK OF E MIFFLIN	1500 BLOCK OF TROY
0 BLOCK OF N INGERSOLL	1100 BLOCK OF ELIZABETH	1500 BLOCK OF VONDRON
0 BLOCK OF NOKOMIS	1100 BLOCK OF MERRILL SPRINGS	1600 BLOCK OF DROSTER
0 BLOCK OF THORN	1100 BLOCK OF MINOCQUA	1600 BLOCK OF HAAS
0 BLOCK OF WALKER	1100 BLOCK OF RISSER	1600 BLOCK OF HOMBERG
0 BLOCK OF WEST	1100 BLOCK OF SHASTA	1600 BLOCK OF LAKE VIEW
100 BLOCK OF CHARLEEN	1100 BLOCK OF SHERMAN	1600 BLOCK OF MAYFIELD
100 BLOCK OF DAYTON	1100 BLOCK OF TROY	1600 BLOCK OF REETZ
100 BLOCK OF LARKIN	1100 BLOCK OF TUMALO	1600 BLOCK OF SUNFIELD
100 BLOCK OF MEADOWLARK	1200 BLOCK OF DROSTER	1600 BLOCK OF TROY
100 BLOCK OF N BALDWIN	1200 BLOCK OF E DAYTON	1600 BLOCK OF VONDRON
100 BLOCK OF N BLAIR	1200 BLOCK OF E JOHNSON	1600 BLOCK OF WICKLOW
100 BLOCK OF N BLOUNT	1200 BLOCK OF E MIFFLIN	1700 BLOCK OF DROSTER
100 BLOCK OF N BREARLY	1200 BLOCK OF ELIZABETH	1700 BLOCK OF HOMBERG
100 BLOCK OF N BUTLER	1200 BLOCK OF PAINTED POST	1700 BLOCK OF KENNETH
100 BLOCK OF N DICKINSON	1200 BLOCK OF SHERMAN	1700 BLOCK OF REETZ
100 BLOCK OF N FEW	1200 BLOCK OF TROY	1700 BLOCK OF THACKERAY
100 BLOCK OF N FRANKLIN	1300 BLOCK OF DROSTER	1700 BLOCK OF VONDRON
100 BLOCK OF N HANCOCK	1300 BLOCK OF E DAYTON	1700 BLOCK OF WICKLOW
100 BLOCK OF N INGERSOLL	1300 BLOCK OF E JOHNSON	1800 BLOCK OF BROWNING
100 BLOCK OF N PATERSON	1300 BLOCK OF E MIFFLIN	1800 BLOCK OF KENNETH
100 BLOCK OF STANDISH	1300 BLOCK OF FORSTER	1800 BLOCK OF REETZ
100 BLOCK OF WALKER	1300 BLOCK OF LAKE VIEW	1900 BLOCK OF BROWNING
1000 BLOCK OF E DAYTON	1300 BLOCK OF PAINTED POST	1900 BLOCK OF CHRISTINE
1000 BLOCK OF E GORHAM	1300 BLOCK OF REETZ	1900 BLOCK OF KENNETH
1000 BLOCK OF E JOHNSON	1300 BLOCK OF SHERMAN	1900 BLOCK OF LORETTA
1000 BLOCK OF MERRILL SPRINGS	1300 BLOCK OF TROY	1900 BLOCK OF REETZ
1000 BLOCK OF N THOMPSON	1400 BLOCK OF DREWRY	1900 BLOCK OF TENNYSON
1000 BLOCK OF PAINTED POST	1400 BLOCK OF DROSTER	1900 BLOCK OF THACKERAY

EXHIBIT 1
2024 Tree Trimming Block Numbers
and Street Names

1900 BLOCK OF VONDRON	300 BLOCK OF N HAMILTON	3900 BLOCK OF COUNCIL
200 BLOCK OF ACEWOOD	300 BLOCK OF N INGERSOLL	3900 BLOCK OF HANOVER
200 BLOCK OF ALDEN	300 BLOCK OF N LIVINGSTON	3900 BLOCK OF MANITOU
200 BLOCK OF HUMMINGBIRD	300 BLOCK OF N PATERSON	3900 BLOCK OF N SHERMAN
200 BLOCK OF LANGDON	300 BLOCK OF WAVERLY	3900 BLOCK OF NAKOMA
200 BLOCK OF LARKIN	3300 BLOCK OF CROSS	3900 BLOCK OF PLYMOUTH
200 BLOCK OF MEADOWLARK	3300 BLOCK OF DRYDEN	3900 BLOCK OF REGENT
200 BLOCK OF N BALDWIN	3300 BLOCK OF GREGORY	3900 BLOCK OF SHAWNEE
200 BLOCK OF N BLAIR	3300 BLOCK OF MONROE	3900 BLOCK OF YUMA
200 BLOCK OF N BLOUNT	3400 BLOCK OF CROSS	3900 BLOCK OF ZENO
200 BLOCK OF N BREARLY	3400 BLOCK OF DRYDEN	400 BLOCK OF HILLTOP
200 BLOCK OF N DICKINSON	3400 BLOCK OF N SHERMAN	400 BLOCK OF JEAN
200 BLOCK OF N FEW	3500 BLOCK OF CROSS	400 BLOCK OF LEITCH
200 BLOCK OF N INGERSOLL	3500 BLOCK OF GREGORY	400 BLOCK OF MARSTON
200 BLOCK OF N LIVINGSTON	3500 BLOCK OF N SHERMAN	400 BLOCK OF MEADOWLARK
200 BLOCK OF N PATERSON	3500 BLOCK OF NAKOMA	400 BLOCK OF N BALDWIN
200 BLOCK OF STANDISH	3600 BLOCK OF CASCADE	400 BLOCK OF N BREARLY
200 BLOCK OF W GORHAM	3600 BLOCK OF CROSS	400 BLOCK OF N FEW
2000 BLOCK OF BROWNING	3600 BLOCK OF DRYDEN	400 BLOCK OF N INGERSOLL
2000 BLOCK OF CAMERON	3600 BLOCK OF GREGORY	400 BLOCK OF N LIVINGSTON
2000 BLOCK OF FREEPORT	3600 BLOCK OF HOVDE	400 BLOCK OF N PATERSON
2000 BLOCK OF REETZ	3600 BLOCK OF MONROE	400 BLOCK OF SIDNEY
2000 BLOCK OF VONDRON	3600 BLOCK OF N SHERMAN	400 BLOCK OF WASHBURN
2100 BLOCK OF HARLEY	3600 BLOCK OF NAKOMA	4000 BLOCK OF CHIPPEWA
2100 BLOCK OF TAWHEE	3600 BLOCK OF ODANA	4000 BLOCK OF COUNCIL
2100 BLOCK OF VONDRON	3600 BLOCK OF SPENSER	4000 BLOCK OF HANOVER
2200 BLOCK OF HARLEY	3600 BLOCK OF SPRING	4000 BLOCK OF HIAWATHA
2200 BLOCK OF PRAIRIE	3600 BLOCK OF WYOTA	4000 BLOCK OF HILLCREST
2200 BLOCK OF TAWHEE	3700 BLOCK OF COUNCIL	4000 BLOCK OF MANDAN
2300 BLOCK OF PRAIRIE	3700 BLOCK OF ELIOT	4000 BLOCK OF MANITOU
2300 BLOCK OF TAWHEE	3700 BLOCK OF GOODLAND	4000 BLOCK OF N SHERMAN
2400 BLOCK OF JONQUIL	3700 BLOCK OF GREGORY	4000 BLOCK OF NAHEDA
300 BLOCK OF HUMMINGBIRD	3700 BLOCK OF HANOVER	4000 BLOCK OF YUMA
300 BLOCK OF LARKIN	3700 BLOCK OF N SHERMAN	4000 BLOCK OF ZENO
300 BLOCK OF MARSTON	3700 BLOCK OF NAKOMA	4100 BLOCK OF COUNCIL
300 BLOCK OF MEADOWLARK	3700 BLOCK OF ODANA	4100 BLOCK OF HANOVER
300 BLOCK OF N BALDWIN	3700 BLOCK OF SPRING	4100 BLOCK OF N SHERMAN
300 BLOCK OF N BLAIR	3700 BLOCK OF SUSAN	4100 BLOCK OF NAKOMA
300 BLOCK OF N BLOUNT	3800 BLOCK OF COUNCIL	4100 BLOCK OF YUMA
300 BLOCK OF N BREARLY	3800 BLOCK OF HANOVER	4200 BLOCK OF CHEROKEE
300 BLOCK OF N BUTLER	3800 BLOCK OF N SHERMAN	4200 BLOCK OF COMMERCIAL
300 BLOCK OF N FEW	3800 BLOCK OF ODANA	4200 BLOCK OF HANOVER

EXHIBIT 1
2024 Tree Trimming Block Numbers
and Street Names

4200 BLOCK OF HIAWATHA	4900 BLOCK OF HOLIDAY	5100 BLOCK OF SHERWOOD
4200 BLOCK OF KENWOOD	4900 BLOCK OF KNOX	5100 BLOCK OF SPRING
4200 BLOCK OF NAKOMA	4900 BLOCK OF LAKE MENDOTA	5100 BLOCK OF STONEHAVEN
4200 BLOCK OF N SHERMAN	4900 BLOCK OF MARVIN	5200 BLOCK OF DENTON
4200 BLOCK OF YUMA	4900 BLOCK OF ODANA	5200 BLOCK OF E BUCKEYE
4300 BLOCK OF CHEROKEE	4900 BLOCK OF PAUL	5200 BLOCK OF FAIRWAY
4300 BLOCK OF YUMA	4900 BLOCK OF RALPH	5200 BLOCK OF LAKE MENDOTA
4400 BLOCK OF CONLIN	4900 BLOCK OF RAYMOND	5200 BLOCK OF MILWARD
4400 BLOCK OF YUMA	4900 BLOCK OF RETANA	5200 BLOCK OF ODANA
4500 BLOCK OF CONLIN	4900 BLOCK OF SHERWOOD	5200 BLOCK OF PAINTED POST
4500 BLOCK OF DIAMOND	4900 BLOCK OF TWIN OAKS	5200 BLOCK OF RAYMOND
4500 BLOCK OF MILWAUKEE	4900 BLOCK OF WHITCOMB	5200 BLOCK OF STARKER
4600 BLOCK OF AGATE	4900 BLOCK OF WOODBURN	5300 BLOCK OF CONEY WESTON
4600 BLOCK OF BOB O LINK	500 BLOCK OF ACEWOOD	5300 BLOCK OF CORNWALL
4600 BLOCK OF FLINT	500 BLOCK OF BRIAR HILL	5300 BLOCK OF E BUCKEYE
4600 BLOCK OF MILWAUKEE	500 BLOCK OF E MIFFLIN	5300 BLOCK OF FAIRWAY
4700 BLOCK OF BOB O LINK	500 BLOCK OF HILLTOP	5300 BLOCK OF MILWARD
4700 BLOCK OF FLINT	500 BLOCK OF HUMMINGBIRD	5300 BLOCK OF ODANA
4700 BLOCK OF HERMSMEIER	500 BLOCK OF MEADOWLARK	5300 BLOCK OF PAINTED POST
4700 BLOCK OF JADE	500 BLOCK OF SHADY WOOD	5300 BLOCK OF STARKER
4700 BLOCK OF MARTHA	500 BLOCK OF TROY	5400 BLOCK OF E BUCKEYE
4700 BLOCK OF MILWAUKEE	5000 BLOCK OF BLACK OAK	5400 BLOCK OF PAINTED POST
4700 BLOCK OF ODANA	5000 BLOCK OF CAMILLA	5400 BLOCK OF STARKER
4700 BLOCK OF ONYX	5000 BLOCK OF CONEY WESTON	5800 BLOCK OF IDLEDALE
4700 BLOCK OF RETANA	5000 BLOCK OF FLAD	5800 BLOCK OF MEADOWOOD
4700 BLOCK OF SHERWOOD	5000 BLOCK OF HOLIDAY	5900 BLOCK OF MALABAR
4700 BLOCK OF TOKAY	5000 BLOCK OF LAKE MENDOTA	5900 BLOCK OF MAYHILL
4800 BLOCK OF FLINT	5000 BLOCK OF ODANA	5900 BLOCK OF MONTICELLO
4800 BLOCK OF GOLDFINCH	5000 BLOCK OF SHERWOOD	600 BLOCK OF ACEWOOD
4800 BLOCK OF HERMSMEIER	5000 BLOCK OF TOKAY	600 BLOCK OF BRIAR HILL
4800 BLOCK OF HILLVIEW	5000 BLOCK OF WOODBURN	600 BLOCK OF CONSTITUTION
4800 BLOCK OF HOLIDAY	5100 BLOCK OF BLACK OAK	600 BLOCK OF COPELAND
4800 BLOCK OF LOIS	5100 BLOCK OF CAMILLA	600 BLOCK OF DEARHOLT
4800 BLOCK OF ODANA	5100 BLOCK OF DENTON	600 BLOCK OF E DAYTON
4800 BLOCK OF ONYX	5100 BLOCK OF E BUCKEYE	600 BLOCK OF E GORHAM
4800 BLOCK OF SHERWOOD	5100 BLOCK OF FLAD	600 BLOCK OF E JOHNSON
4800 BLOCK OF WOODBURN	5100 BLOCK OF HOLIDAY	600 BLOCK OF E MIFFLIN
4900 BLOCK OF BLACK OAK	5100 BLOCK OF LAKE MENDOTA	600 BLOCK OF GLENWOOD
4900 BLOCK OF FLAD	5100 BLOCK OF MILWARD	600 BLOCK OF HILLTOP
4900 BLOCK OF GOLDFINCH	5100 BLOCK OF MINOCQUA	600 BLOCK OF PIPER
4900 BLOCK OF HAMMERSLEY	5100 BLOCK OF ODANA	600 BLOCK OF S SEGOE
4900 BLOCK OF HERMSMEIER	5100 BLOCK OF ROMAY	600 BLOCK OF SHEARWATER

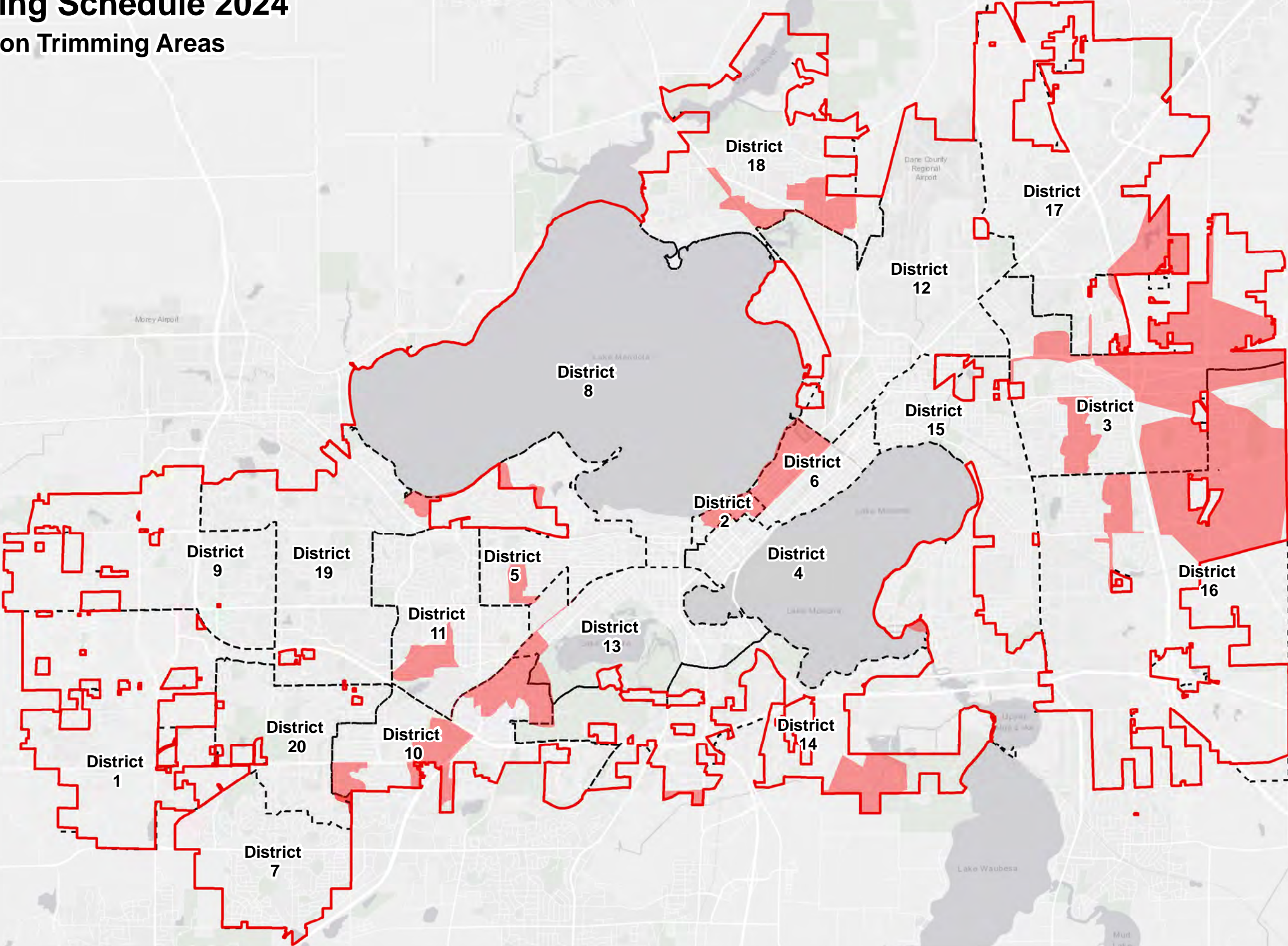
EXHIBIT 1
2024 Tree Trimming Block Numbers
and Street Names

600 BLOCK OF TROY
6000 BLOCK OF MALABAR
6000 BLOCK OF MAYHILL
6000 BLOCK OF MEADOWOOD
6000 BLOCK OF RAYMOND
6000 BLOCK OF RIVA
6100 BLOCK OF RAYMOND
6100 BLOCK OF RIVA
700 BLOCK OF ACEWOOD
700 BLOCK OF BEWICK
700 BLOCK OF BRIAR HILL
700 BLOCK OF COPELAND
700 BLOCK OF DEARHOLT
700 BLOCK OF E GORHAM
700 BLOCK OF E JOHNSON
700 BLOCK OF HURON
700 BLOCK OF MESTA
700 BLOCK OF MIAMI
700 BLOCK OF ODANA
700 BLOCK OF ONEIDA
700 BLOCK OF OTTAWA
700 BLOCK OF PULLEY
700 BLOCK OF SENECA
700 BLOCK OF TROY
700 BLOCK OF WEDGEWOOD
700 BLOCK OF WESTERN
700 BLOCK OF ZIEGLER
800 BLOCK OF ACEWOOD
800 BLOCK OF E DAYTON
800 BLOCK OF E GORHAM
800 BLOCK OF E JOHNSON
800 BLOCK OF E MIFFLIN
800 BLOCK OF HURON
800 BLOCK OF LEWIS
800 BLOCK OF MEADOWLARK
800 BLOCK OF MIAMI
800 BLOCK OF MINAKWA
800 BLOCK OF ONEIDA
800 BLOCK OF PULLEY
800 BLOCK OF REDLAND
800 BLOCK OF TROY
800 BLOCK OF WABAN

800 BLOCK OF ZIEGLER
900 BLOCK OF ACEWOOD
900 BLOCK OF BLAINE
900 BLOCK OF CASTLE
900 BLOCK OF E DAYTON
900 BLOCK OF E GORHAM
900 BLOCK OF E MIFFLIN
900 BLOCK OF MOHICAN
900 BLOCK OF S MIDVALE
900 BLOCK OF SHASTA
900 BLOCK OF TROY
900 BLOCK OF WABAN

Tree Pruning Schedule 2024

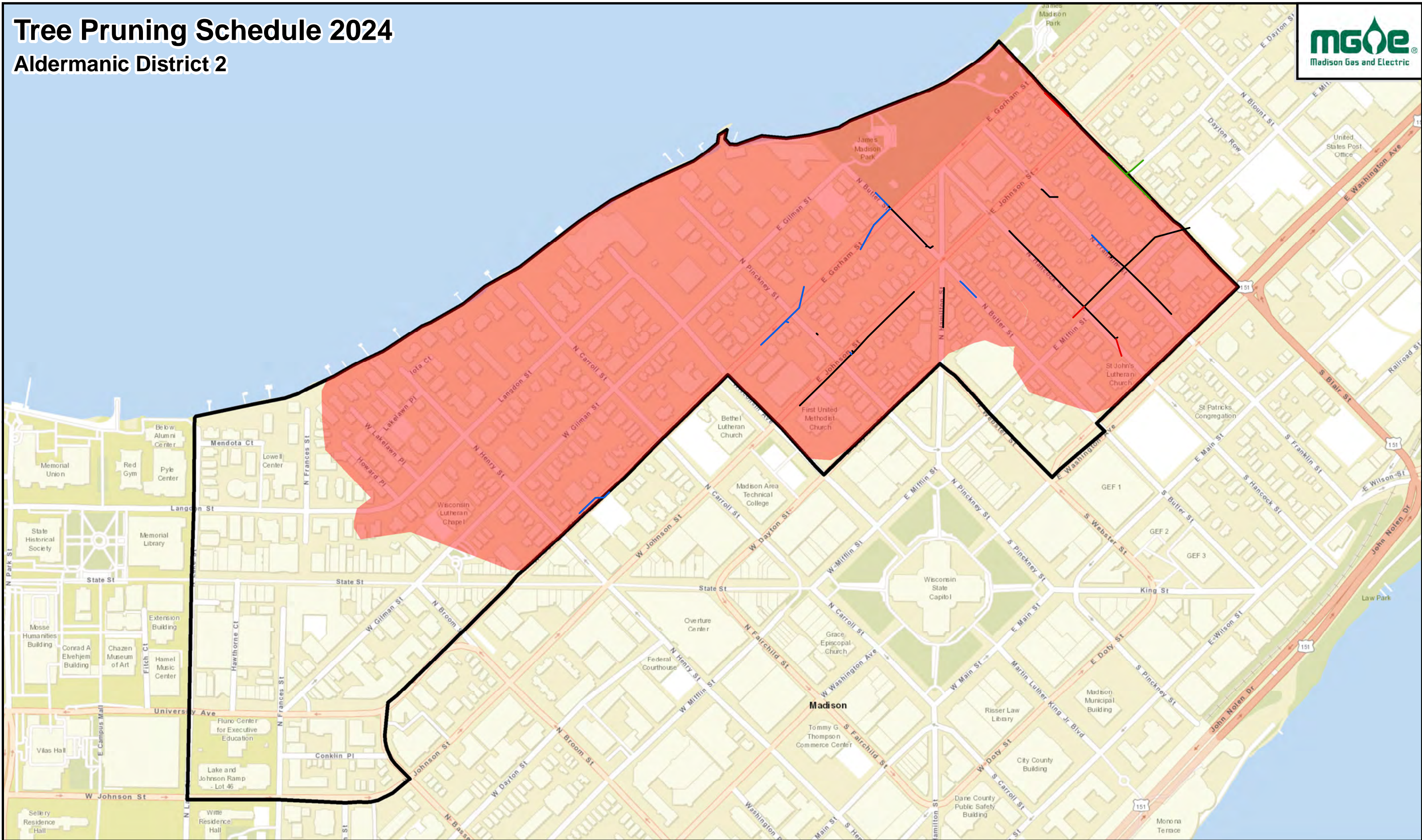
City of Madison Trimming Areas



GIS Data / Mapping Disclaimer
Madison Gas and Electric Company ("MGE") is providing you access to its GIS mapping data ("Information"), in electronic format or print format, as a resource of general information for use "as-is." The Information provided is for reference purposes only and is and shall remain the property of MGE. This Information may not be copied, distributed, rented, or altered for subsequent use, in whole or in part, without the express written consent of MGE. The Information provided may contain inaccuracies or errors. Source data used for the Information may have been collected at different scales, times or definitions, resulting in inconsistencies among features represented together as part of this Information. MGE makes no representation regarding the accuracy, reliability, or completeness of the information. The use of this Information is at your own risk.
By accessing this Information, you agree and acknowledge that receipt of the Information in no way releases you from following required and standard protocols in the course of normal business including but not limited to calling and relying upon Digger's Hotline.
By using the Information you hereby release MGE, its officers, directors, employees and agents from any responsibility or liability associated with its use. In no event will MGE be liable for any damages whatsoever that may arise out of the use of the Information.
For questions, contact Steve Marymee (smarymee@mge.com) or Zach Lindfors (zlindfors@mge.com)

Tree Pruning Schedule 2024

Aldermanic District 2



GIS Data / Mapping Disclaimer

Madison Gas and Electric Company ("MGE") is providing you access to its GIS mapping data ("Information"), in electronic format or print format, as a resource of general information for use "as-is." The Information provided is for reference purposes only and is and shall remain the property of MGE. This Information may not be copied, distributed, rented, or altered for subsequent use, in whole or in part, without the express written consent of MGE. The Information provided may contain inaccuracies or errors. Source data used for the Information may have been collected at different scales, times or definitions, resulting in inconsistencies among features represented together as part of this Information. MGE makes no representation regarding the accuracy, reliability, or completeness of the information. The use of this Information is at your own risk.

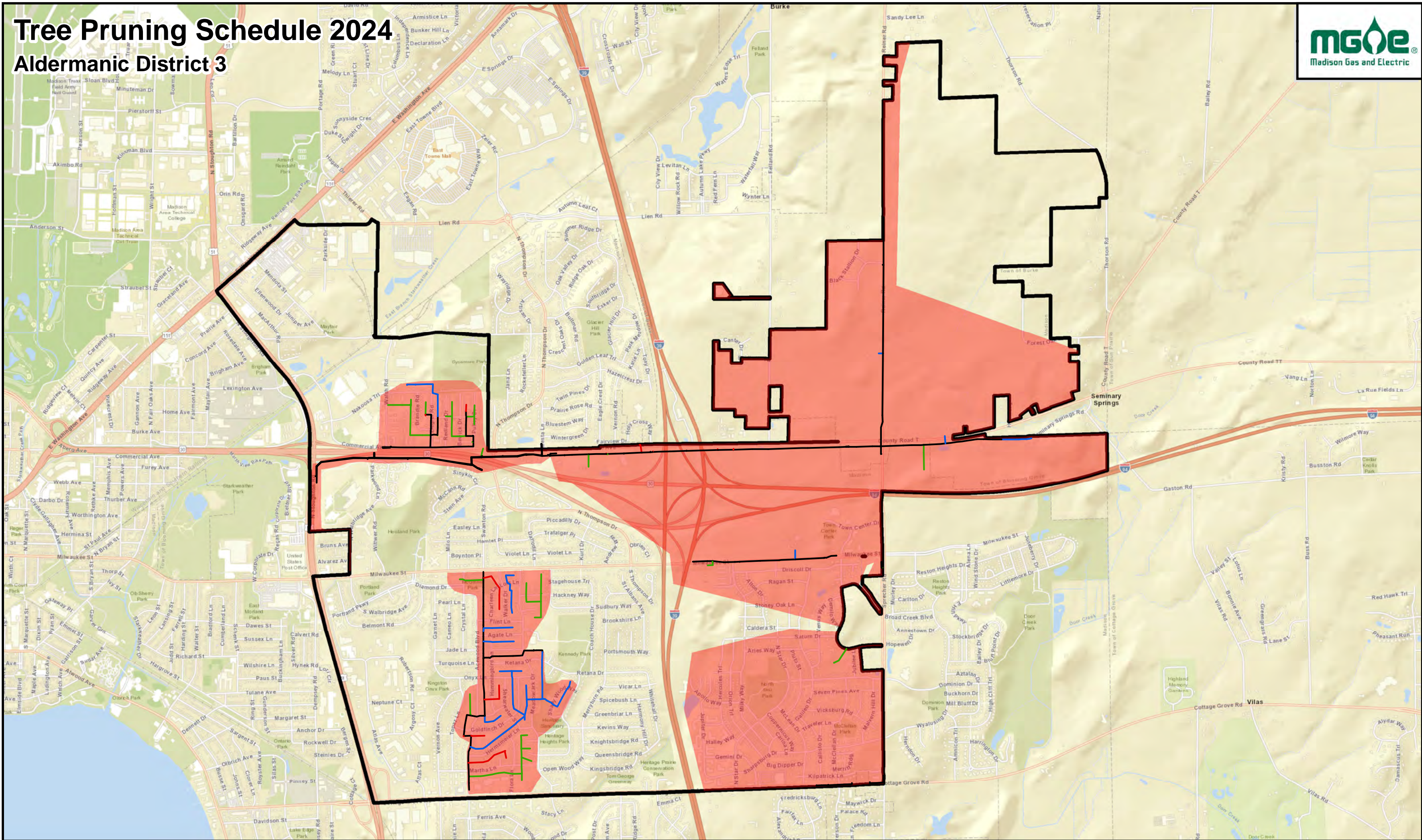
By accessing this Information, you agree and acknowledge that receipt of the Information in no way releases you from following required and standard protocols in the course of normal business including but not limited to calling and relying upon Digger's Hotline.

By using the Information you hereby release MGE, its officers, directors, employees and agents from any responsibility or liability associated with its use. In no event will MGE be liable for any damages whatsoever that may arise out of the use of the Information.

For questions, contact Steve Marymee (smarymee@mge.com) or Zach Lindfors (zindfors@mge.com)

Tree Pruning Schedule 2024

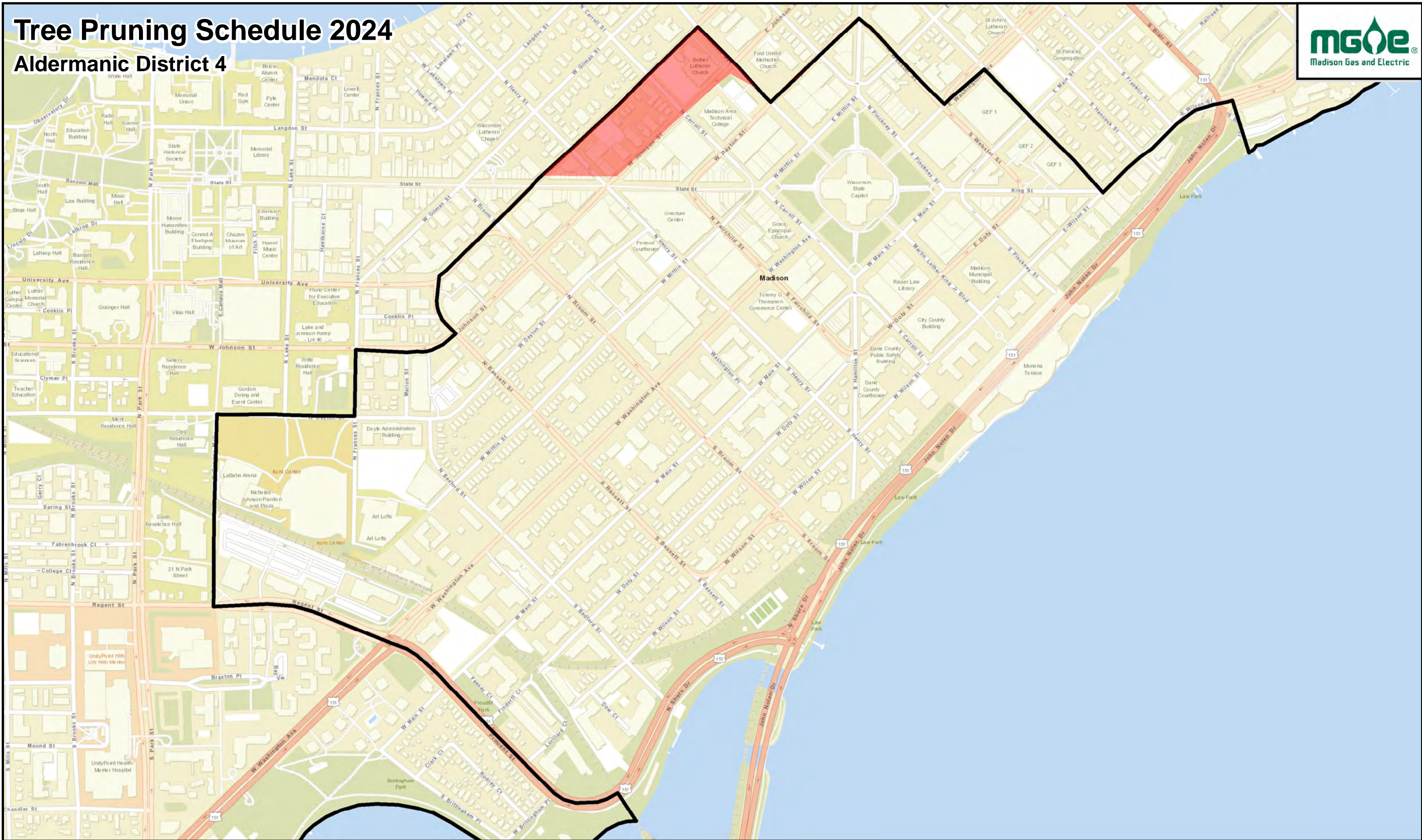
Aldermanic District 3



GIS Data / Mapping Disclaimer
Madison Gas and Electric Company ("MGE") is providing you access to its GIS mapping data ("Information"), in electronic format or print format, as a resource of general information for use "as-is." The Information provided is for reference purposes only and is and shall remain the property of MGE. This Information may not be copied, distributed, rented, or altered for subsequent use, in whole or in part, without the express written consent of MGE. The Information provided may contain inaccuracies or errors. Source data used for the Information may have been collected at different scales, times or definitions, resulting in inconsistencies among features represented together as part of this Information. MGE makes no representation regarding the accuracy, reliability, or completeness of the information. The use of this Information is at your own risk. By accessing this Information, you agree and acknowledge that receipt of the Information in no way releases you from following required and standard protocols in the course of normal business including but not limited to calling and relying upon Digger's Hotline. By using the Information you hereby release MGE, its officers, directors, employees and agents from any responsibility or liability associated with its use. In no event will MGE be liable for any damages whatsoever that may arise out of the use of the Information. For questions, contact Steve Marymee (smarymee@mge.com) or Zach Lindfors (zlindfors@mge.com)

Tree Pruning Schedule 2024

Aldermanic District 4



GIS Data / Mapping Disclaimer

Madison Gas and Electric Company ("MGE") is providing you access to its GIS mapping data ("Information"), in electronic format or print format, as a resource of general information for use "as-is." The Information provided is for reference purposes only and is and shall remain the property of MGE. This Information may not be copied, distributed, rented, or altered for subsequent use, in whole or in part, without the express written consent of MGE. The Information provided may contain inaccuracies or errors. Source data used for the Information may have been collected at different scales, times or definitions, resulting in inconsistencies among features represented together as part of this Information. MGE makes no representation regarding the accuracy, reliability, or completeness of the information. The use of this Information is at your own risk.

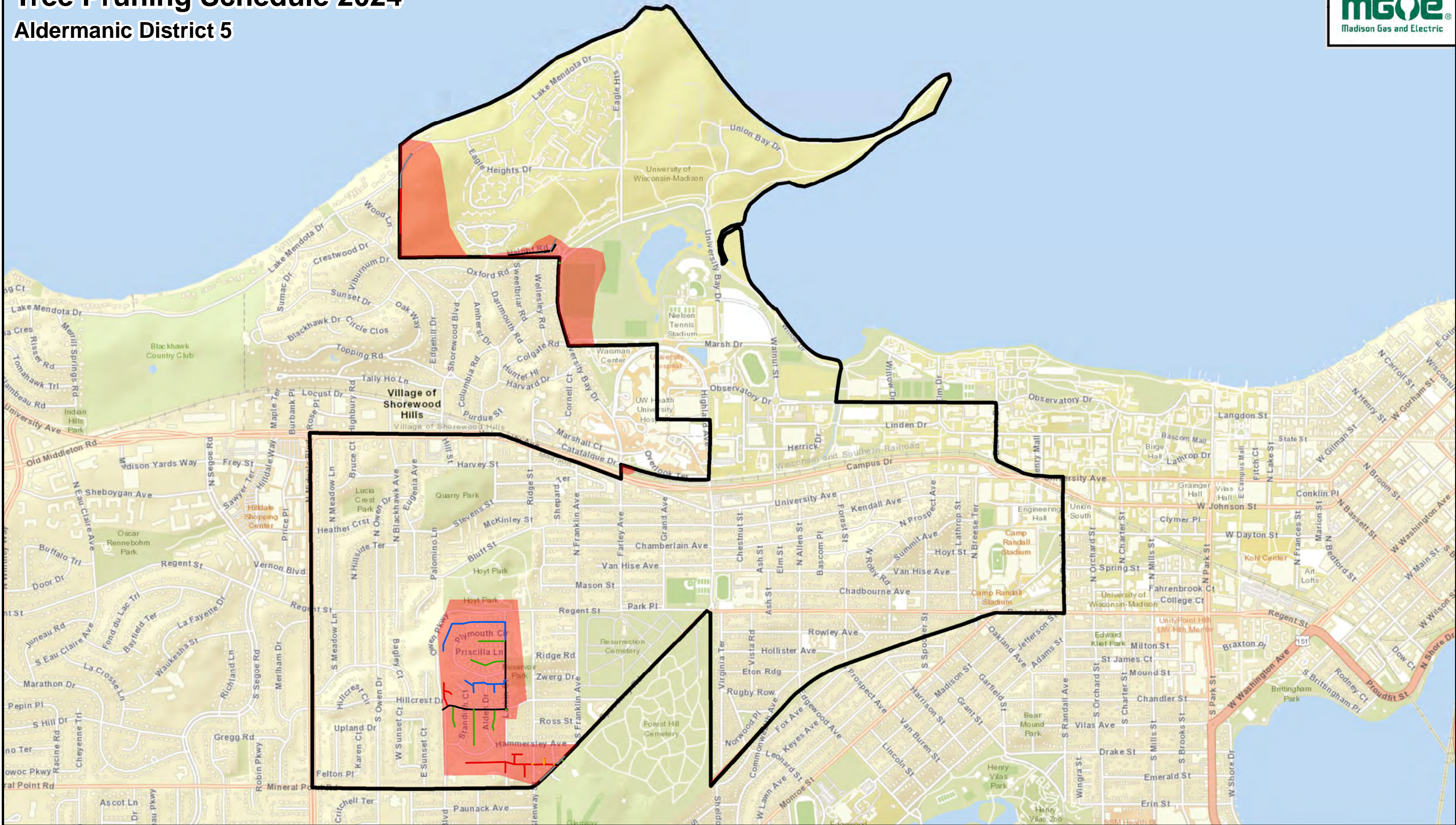
By accessing this Information, you agree and acknowledge that receipt of the Information in no way releases you from following required and standard protocols in the course of normal business including but not limited to calling and relying upon Digger's Hotline.

By using the Information you hereby release MGE, its officers, directors, employees and agents from any responsibility or liability associated with its use. In no event will MGE be liable for any damages whatsoever that may arise out of the use of the Information.

For questions, contact Steve Marymee (smarymee@mge.com) or Zach Lindfors (zlindfors@mge.com)

Tree Pruning Schedule 2024

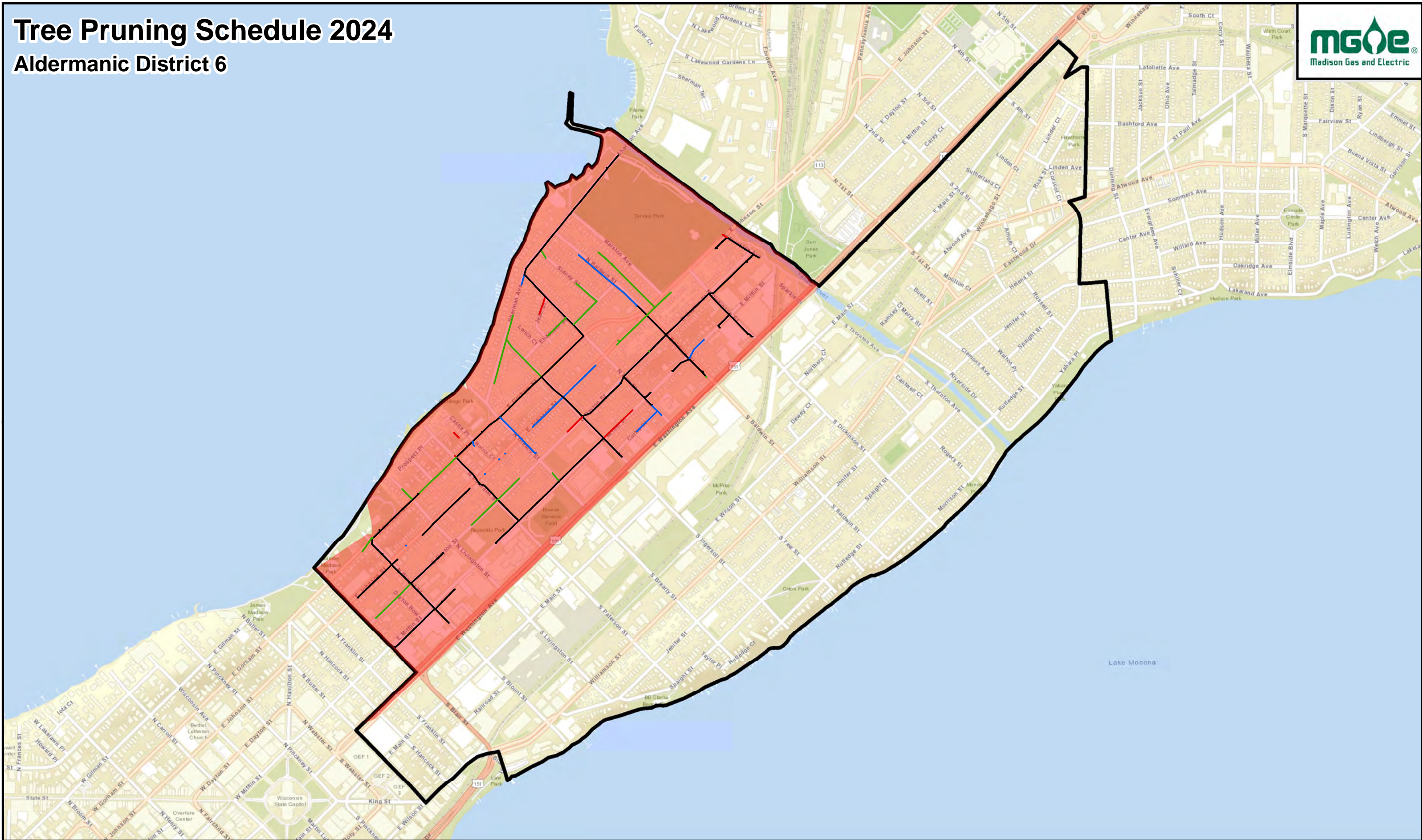
Aldermanic District 5



GIS Data / Mapping Disclaimer
Madison Gas and Electric Company ("MGE") is providing you access to its GIS mapping data ("Information"), in electronic format or print format, as a resource of general information for use "as-is." The Information provided is for reference purposes only and is and shall remain the property of MGE. This Information may not be copied, distributed, rented, or altered for subsequent use, in whole or in part, without the express written consent of MGE. The Information provided may contain inaccuracies or errors. Source data used for the Information may have been collected at different scales, times or definitions, resulting in inconsistencies among features represented together as part of this Information. MGE makes no representation regarding the accuracy, reliability, or completeness of the information. The use of this Information is at your own risk.
By accessing this Information, you agree and acknowledge that receipt of the Information in no way releases you from following required and standard protocols in the course of normal business including but not limited to calling and relying upon Digger's Hotline.
By using the Information you hereby release MGE, its officers, directors, employees and agents from any responsibility or liability associated with its use. In no event will MGE be liable for any damages whatsoever that may arise out of the use of the Information.
For questions, contact Steve Marymee (smarymee@mge.com) or Zach Lindfors (zindfors@mge.com)

Tree Pruning Schedule 2024

Aldermanic District 6



GIS Data / Mapping Disclaimer

Madison Gas and Electric Company ("MGE") is providing you access to its GIS mapping data ("Information"), in electronic format or print format, as a resource of general information for use "as-is." The Information provided is for reference purposes only and is and shall remain the property of MGE. This Information may not be copied, distributed, rented, or altered for subsequent use, in whole or in part, without the express written consent of MGE. The Information provided may contain inaccuracies or errors. Source data used for the Information may have been collected at different scales, times or definitions, resulting in inconsistencies among features represented together as part of this Information. MGE makes no representation regarding the accuracy, reliability, or completeness of the information. The use of this Information is at your own risk.

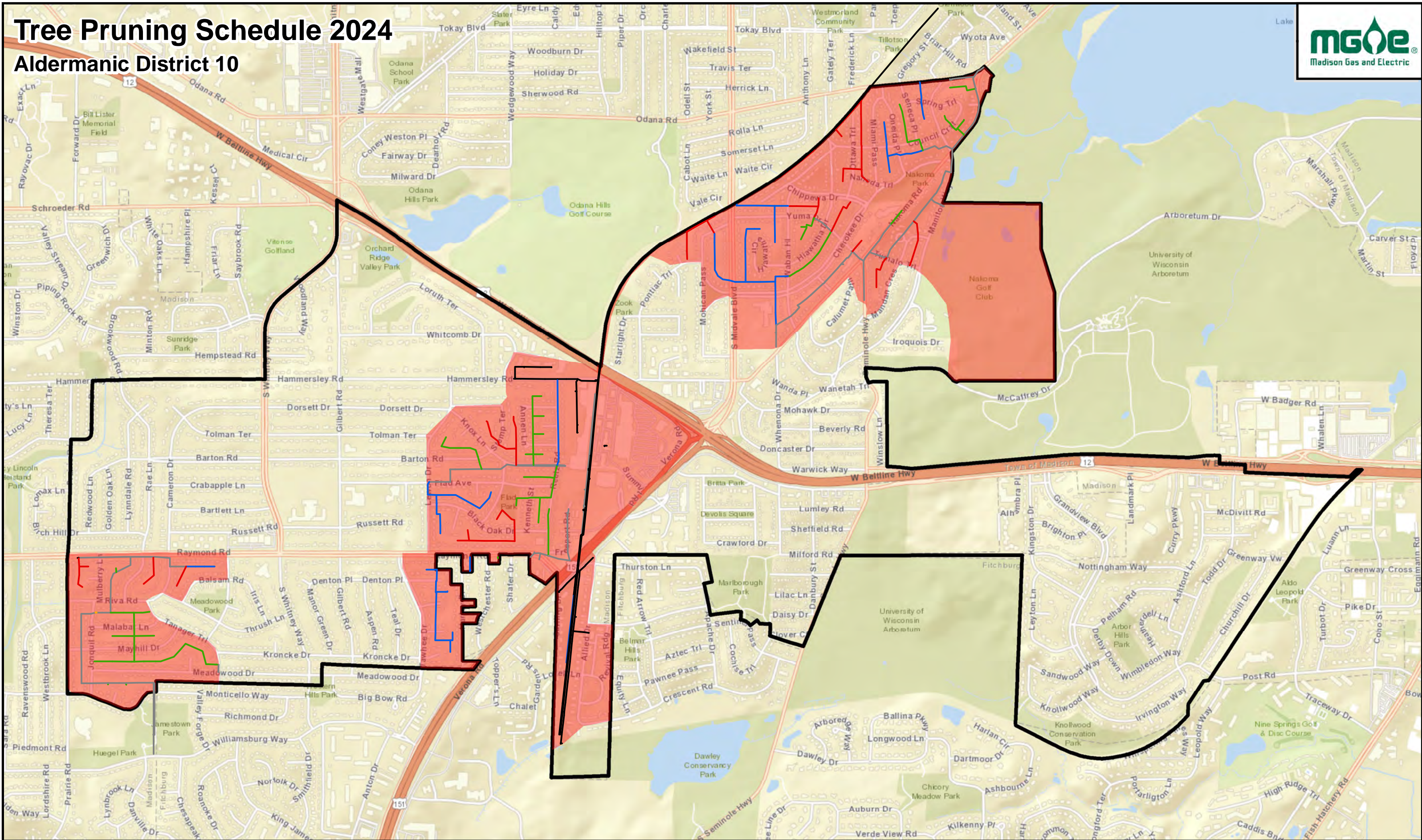
By accessing this Information, you agree and acknowledge that receipt of the Information in no way releases you from following required and standard protocols in the course of normal business including but not limited to calling and relying upon Digger's Hotline.

By using the Information you hereby release MGE, its officers, directors, employees and agents from any responsibility or liability associated with its use. In no event will MGE be liable for any damages whatsoever that may arise out of the use of the Information.

For questions, contact Steve Marymee (smarymee@mge.com) or Zach Lindfors (zindfors@mge.com)

Tree Pruning Schedule 2024

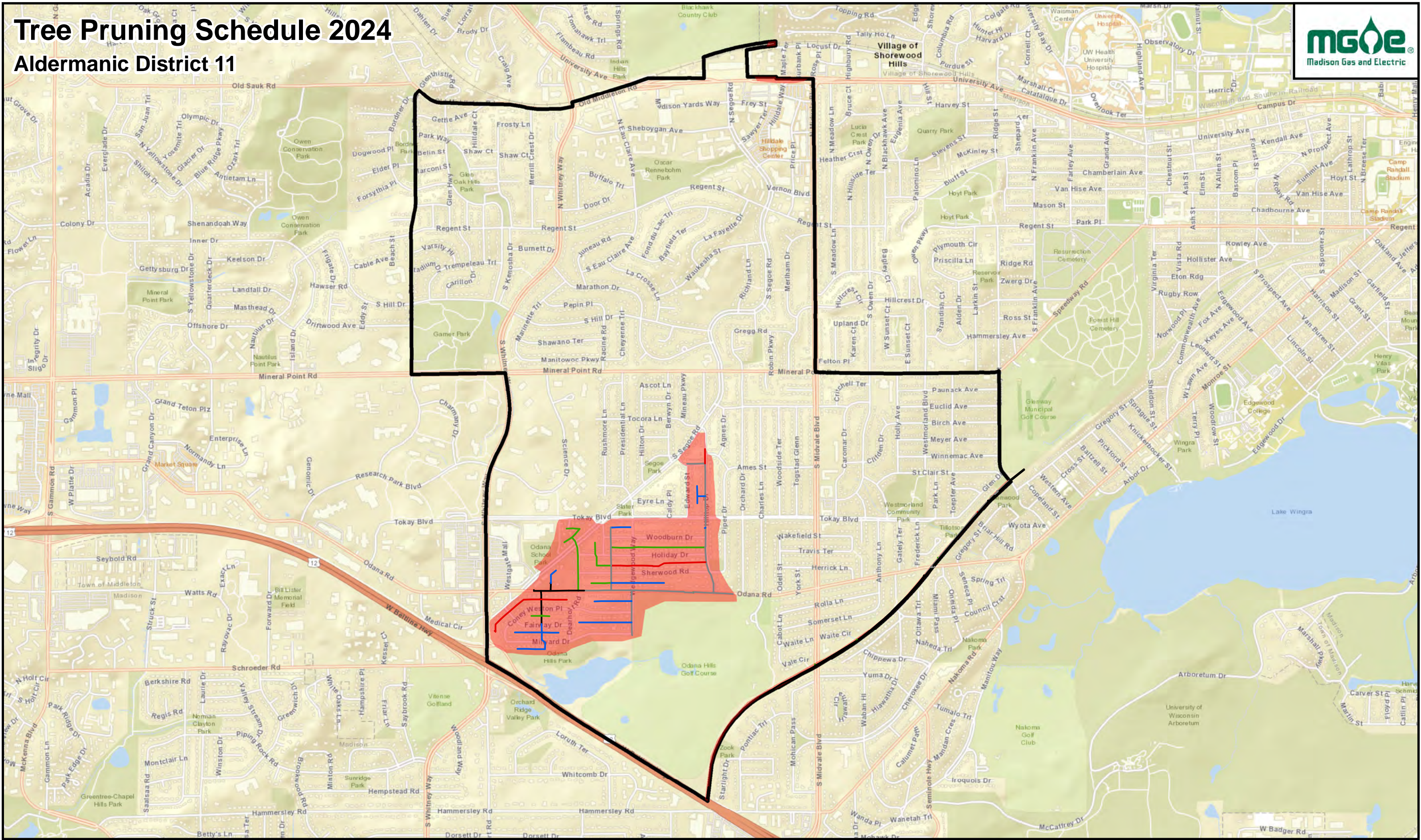
Aldermanic District 10



GIS Data / Mapping Disclaimer
Madison Gas and Electric Company ("MGE") is providing you access to its GIS mapping data ("Information"), in electronic format or print format, as a resource of general information for use "as-is." The Information provided is for reference purposes only and is and shall remain the property of MGE. This Information may not be copied, distributed, rented, or altered for subsequent use, in whole or in part, without the express written consent of MGE. The Information provided may contain inaccuracies or errors. Source data used for the Information may have been collected at different scales, times or definitions, resulting in inconsistencies among features represented together as part of this Information. MGE makes no representation regarding the accuracy, reliability, or completeness of the information. The use of this Information is at your own risk.
By accessing this Information, you agree and acknowledge that receipt of the Information in no way releases you from following required and standard protocols in the course of normal business including but not limited to calling and relying upon Digger's Hotline.
By using the Information you hereby release MGE, its officers, directors, employees and agents from any responsibility or liability associated with its use. In no event will MGE be liable for any damages whatsoever that may arise out of the use of the Information.
For questions, contact Steve Marymee (smarymee@mge.com) or Zach Lindfors (zclindfors@mge.com)

Tree Pruning Schedule 2024

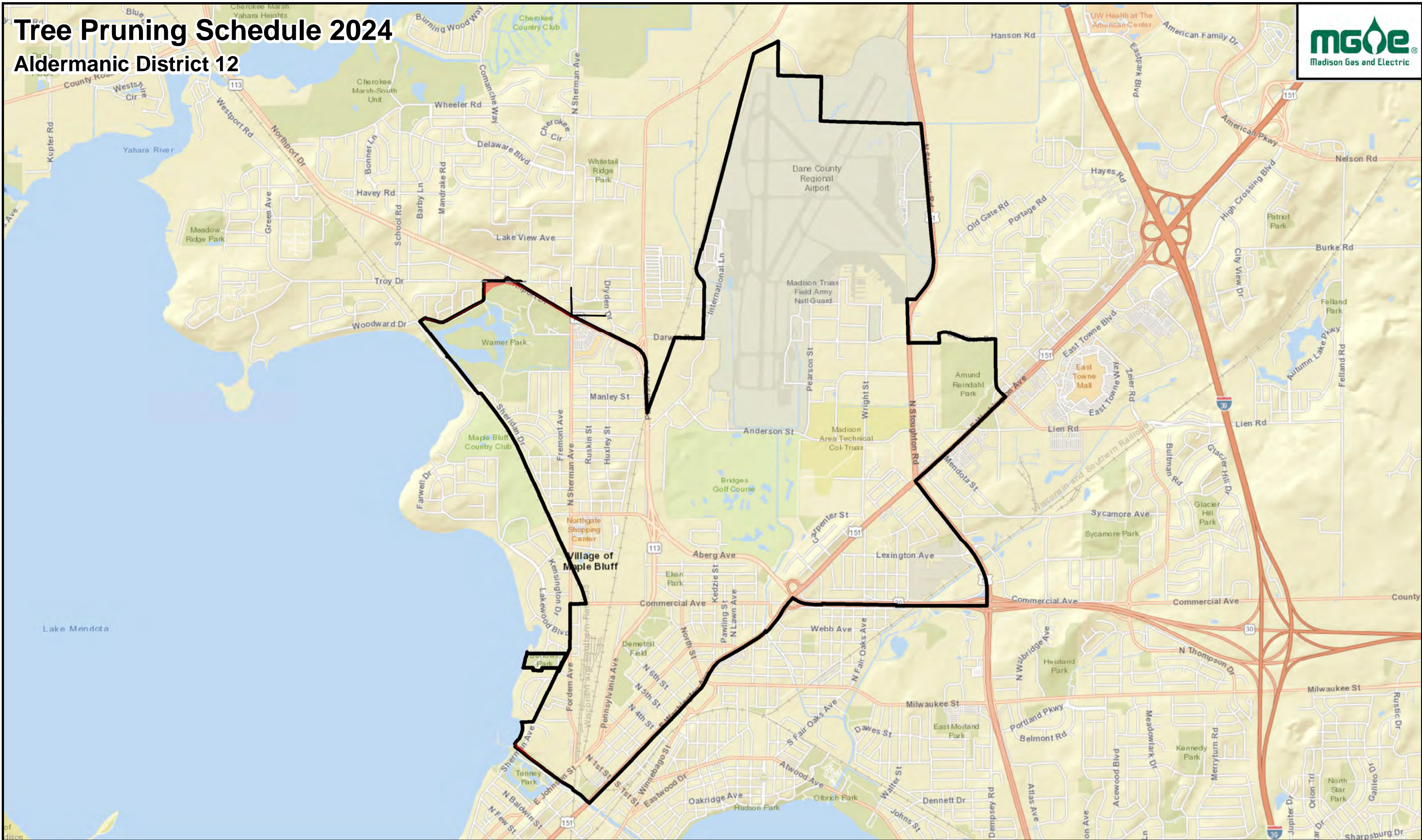
Aldermanic District 11



GIS Data / Mapping Disclaimer
Madison Gas and Electric Company ("MGE") is providing you access to its GIS mapping data ("Information"), in electronic format or print format, as a resource of general information for use "as-is." The Information provided is for reference purposes only and is and shall remain the property of MGE. This Information may not be copied, distributed, rented, or altered for subsequent use, in whole or in part, without the express written consent of MGE. The Information provided may contain inaccuracies or errors. Source data used for the Information may have been collected at different scales, times or definitions, resulting in inconsistencies among features represented together as part of this Information. MGE makes no representation regarding the accuracy, reliability, or completeness of the information. The use of this Information is at your own risk. By accessing this Information, you agree and acknowledge that receipt of the Information in no way releases you from following required and standard protocols in the course of normal business including but not limited to calling and relying upon Digger's Hotline. By using the Information you hereby release MGE, its officers, directors, employees and agents from any responsibility or liability associated with its use. In no event will MGE be liable for any damages whatsoever that may arise out of the use of the Information. For questions, contact Steve Marymee (smarymee@mge.com) or Zach Lindfors (zindfors@mge.com)

Tree Pruning Schedule 2024

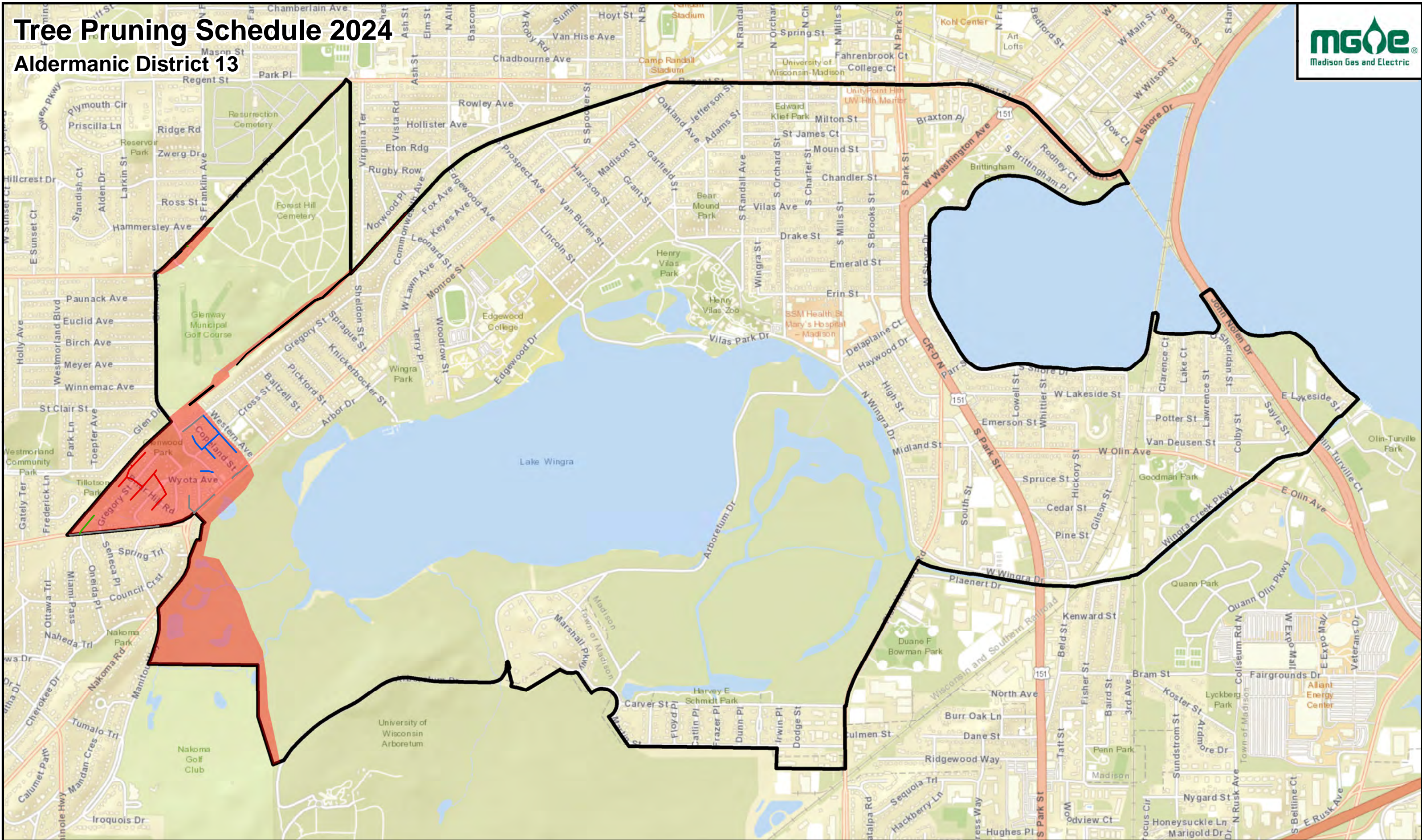
Aldermanic District 12



GIS Data / Mapping Disclaimer
Madison Gas and Electric Company ("MGE") is providing you access to its GIS mapping data ("Information"), in electronic format or print format, as a resource of general information for use "as-is." The Information provided is for reference purposes only and is and shall remain the property of MGE. This Information may not be copied, distributed, rented, or altered for subsequent use, in whole or in part, without the express written consent of MGE. The Information provided may contain inaccuracies or errors. Source data used for the Information may have been collected at different scales, times or definitions, resulting in inconsistencies among features represented together as part of this Information. MGE makes no representation regarding the accuracy, reliability, or completeness of the information. The use of this Information is at your own risk. By accessing this Information, you agree and acknowledge that receipt of the Information in no way releases you from following required and standard protocols in the course of normal business including but not limited to calling and relying upon Digger's Hotline. By using the Information you hereby release MGE, its officers, directors, employees and agents from any responsibility or liability associated with its use. In no event will MGE be liable for any damages whatsoever that may arise out of the use of the Information. For questions, contact Steve Marymee (smarymee@mge.com) or Zach Lindfors (zclindfors@mge.com)

Tree Pruning Schedule 2024

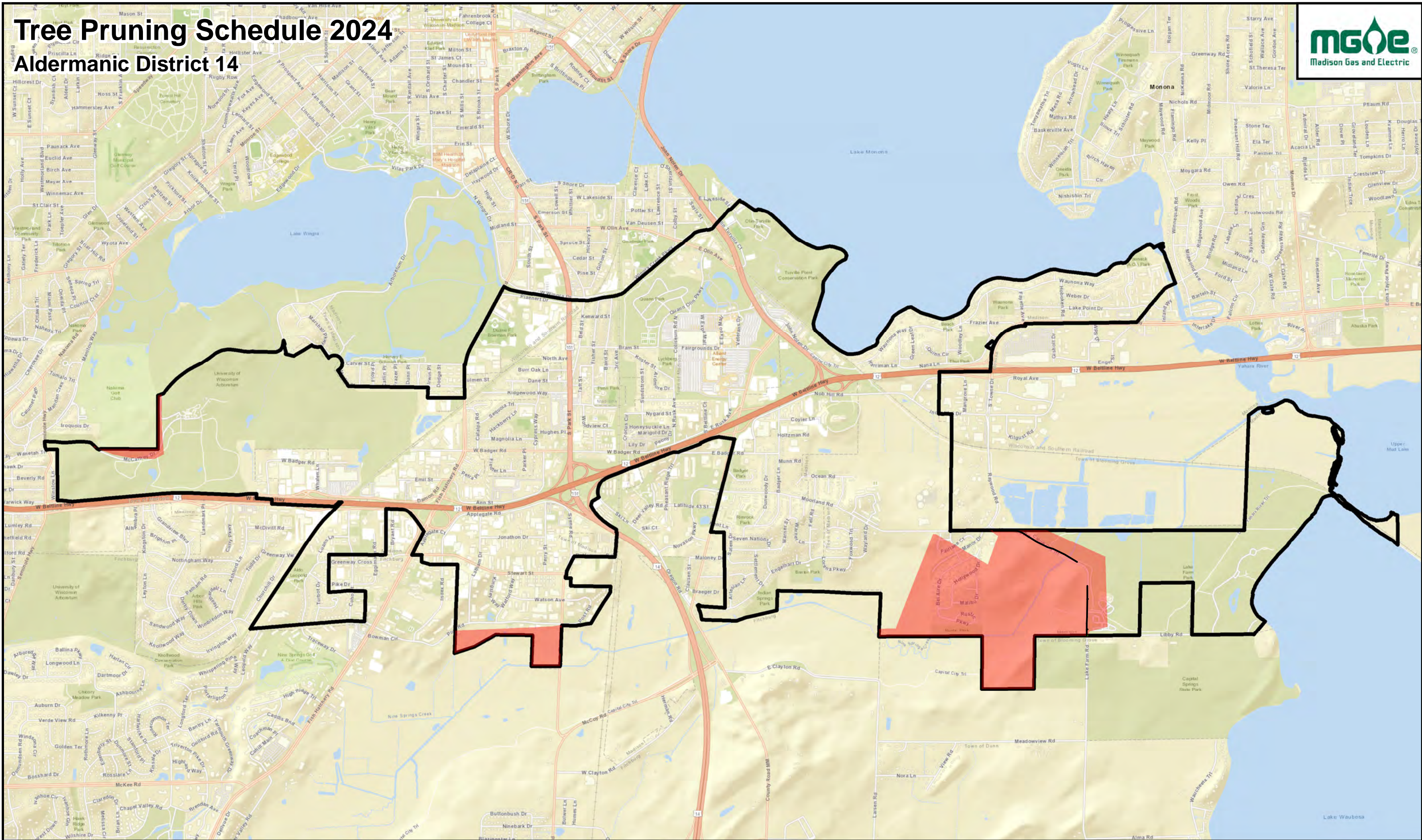
Aldermanic District 13



GIS Data / Mapping Disclaimer
Madison Gas and Electric Company ("MGE") is providing you access to its GIS mapping data ("Information"), in electronic format or print format, as a resource of general information for use "as-is." The Information provided is for reference purposes only and is and shall remain the property of MGE. This Information may not be copied, distributed, rented, or altered for subsequent use, in whole or in part, without the express written consent of MGE. The Information provided may contain inaccuracies or errors. Source data used for the Information may have been collected at different scales, times or definitions, resulting in inconsistencies among features represented together as part of this Information. MGE makes no representation regarding the accuracy, reliability, or completeness of the information. The use of this Information is at your own risk.
By accessing this Information, you agree and acknowledge that receipt of the Information in no way releases you from following required and standard protocols in the course of normal business including but not limited to calling and relying upon Digger's Hotline.
By using the Information you hereby release MGE, its officers, directors, employees and agents from any responsibility or liability associated with its use. In no event will MGE be liable for any damages whatsoever that may arise out of the use of the Information.
For questions, contact Steve Marymee (smarymee@mge.com) or Zach Lindfors (zlindfors@mge.com)

Tree Pruning Schedule 2024

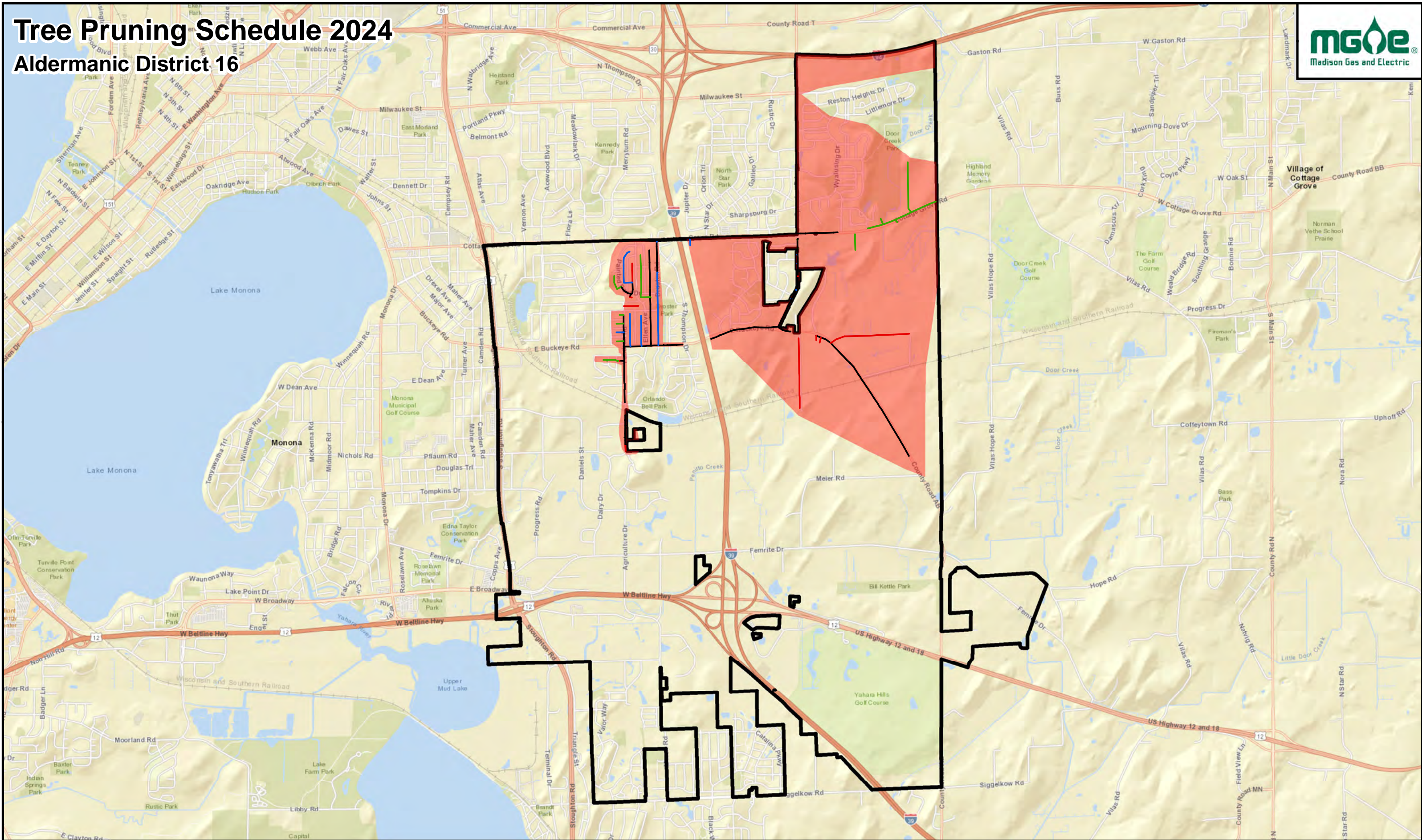
Aldermanic District 14



GIS Data / Mapping Disclaimer
Madison Gas and Electric Company ("MGE") is providing you access to its GIS mapping data ("Information"), in electronic format or print format, as a resource of general information for use "as-is." The Information provided is for reference purposes only and is and shall remain the property of MGE. This Information may not be copied, distributed, rented, or altered for subsequent use, in whole or in part, without the express written consent of MGE. The Information provided may contain inaccuracies or errors. Source data used for the Information may have been collected at different scales, times or definitions, resulting in inconsistencies among features represented together as part of this Information. MGE makes no representation regarding the accuracy, reliability, or completeness of the information. The use of this Information is at your own risk.
By accessing this Information, you agree and acknowledge that receipt of the Information in no way releases you from following required and standard protocols in the course of normal business including but not limited to calling and relying upon Digger's Hotline.
By using the Information you hereby release MGE, its officers, directors, employees and agents from any responsibility or liability associated with its use. In no event will MGE be liable for any damages whatsoever that may arise out of the use of the Information.
For questions, contact Steve Marymee (smarymee@mge.com) or Zach Lindfors (zclindfors@mge.com)

Tree Pruning Schedule 2024

Aldermanic District 16



GIS Data / Mapping Disclaimer

Madison Gas and Electric Company ("MGE") is providing you access to its GIS mapping data ("Information"), in electronic format or print format, as a resource of general information for use "as-is." The Information provided is for reference purposes only and is and shall remain the property of MGE. This Information may not be copied, distributed, rented, or altered for subsequent use, in whole or in part, without the express written consent of MGE. The Information provided may contain inaccuracies or errors. Source data used for the Information may have been collected at different scales, times or definitions, resulting in inconsistencies among features represented together as part of this Information. MGE makes no representation regarding the accuracy, reliability, or completeness of the information. The use of this Information is at your own risk.

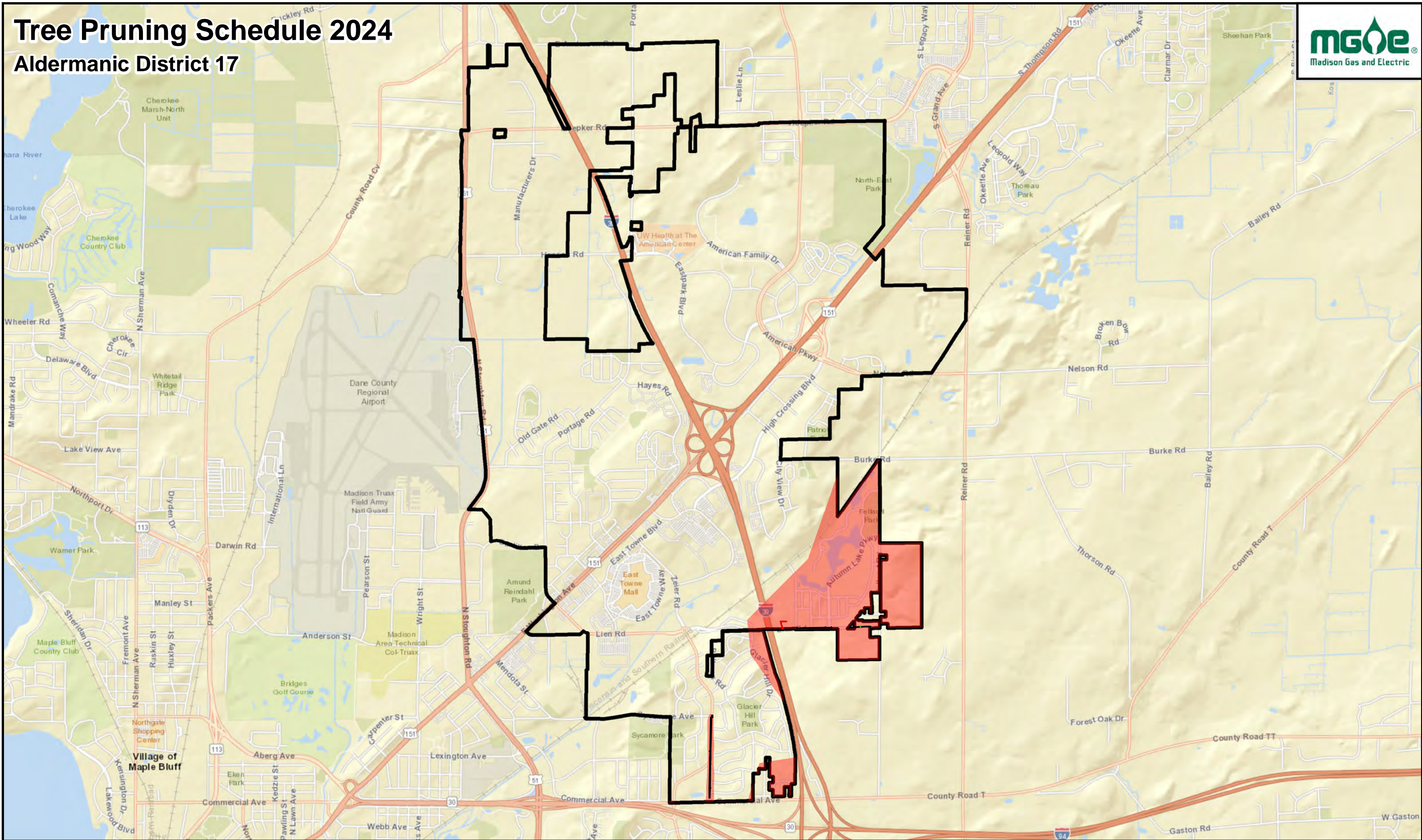
By accessing this Information, you agree and acknowledge that receipt of the Information in no way releases you from following required and standard protocols in the course of normal business including but not limited to calling and relying upon Digger's Hotline.

By using the Information you hereby release MGE, its officers, directors, employees and agents from any responsibility or liability associated with its use. In no event will MGE be liable for any damages whatsoever that may arise out of the use of the Information.

For questions, contact Steve Marymee (smarymee@mge.com) or Zach Lindfors (zclindfors@mge.com)

Tree Pruning Schedule 2024

Aldermanic District 17



GIS Data / Mapping Disclaimer

Madison Gas and Electric Company ("MGE") is providing you access to its GIS mapping data ("Information"), in electronic format or print format, as a resource of general information for use "as-is." The Information provided is for reference purposes only and is and shall remain the property of MGE. This Information may not be copied, distributed, rented, or altered for subsequent use, in whole or in part, without the express written consent of MGE. The Information provided may contain inaccuracies or errors. Source data used for the Information may have been collected at different scales, times or definitions, resulting in inconsistencies among features represented together as part of this Information. MGE makes no representation regarding the accuracy, reliability, or completeness of the information. The use of this Information is at your own risk.

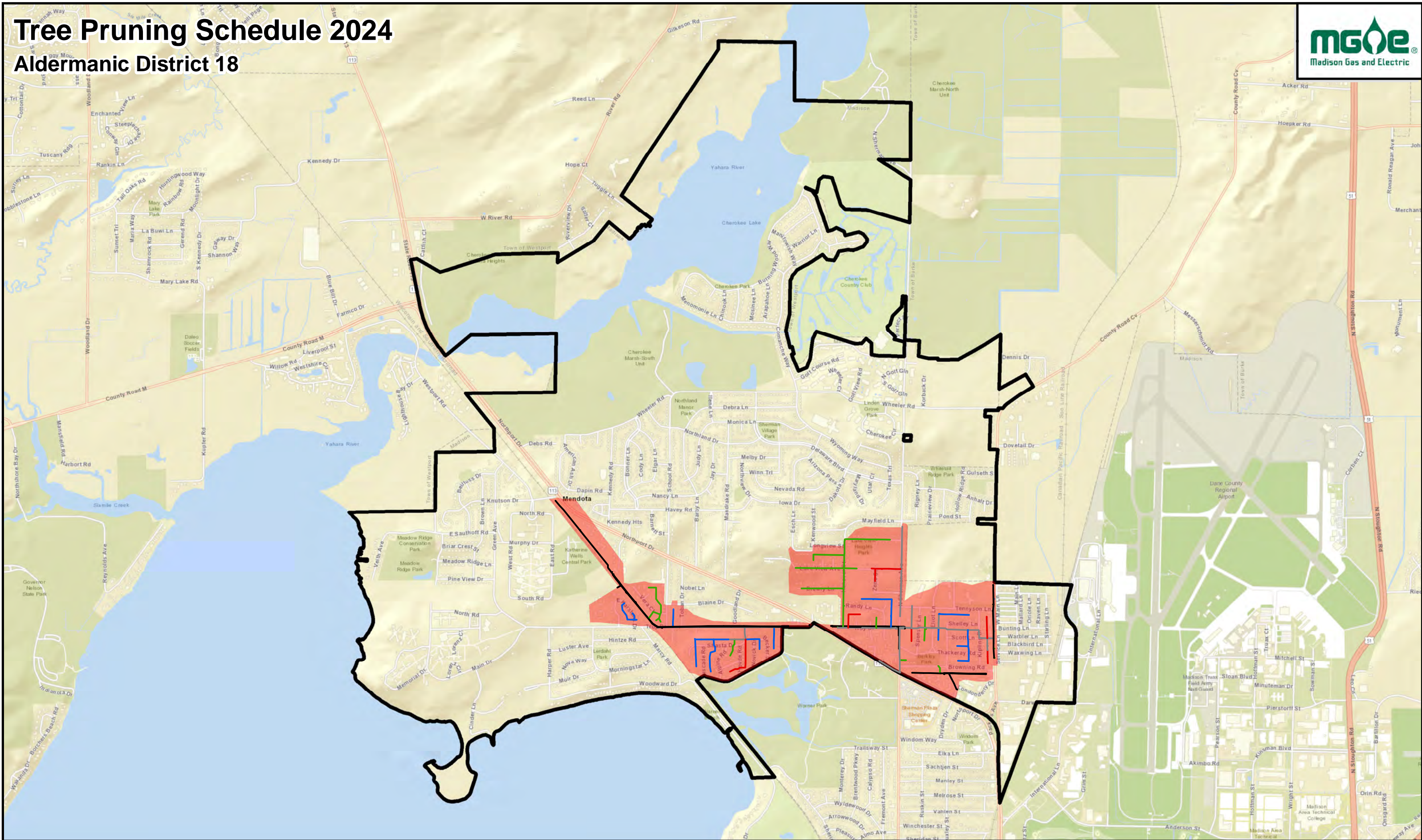
By accessing this Information, you agree and acknowledge that receipt of the Information in no way releases you from following required and standard protocols in the course of normal business including but not limited to calling and relying upon Digger's Hotline.

By using the Information you hereby release MGE, its officers, directors, employees and agents from any responsibility or liability associated with its use. In no event will MGE be liable for any damages whatsoever that may arise out of the use of the Information.

For questions, contact Steve Marymee (smarymee@mge.com) or Zach Lindfors (zlindefors@mge.com)

Tree Pruning Schedule 2024

Aldermanic District 18



GIS Data / Mapping Disclaimer

Madison Gas and Electric Company ("MGE") is providing you access to its GIS mapping data ("Information"), in electronic format or print format, as a resource of general information for use "as-is." The Information provided is for reference purposes only and is and shall remain the property of MGE. This Information may not be copied, distributed, rented, or altered for subsequent use, in whole or in part, without the express written consent of MGE. The Information provided may contain inaccuracies or errors. Source data used for the Information may have been collected at different scales, times or definitions, resulting in inconsistencies among features represented together as part of this Information. MGE makes no representation regarding the accuracy, reliability, or completeness of the information. The use of this Information is at your own risk.

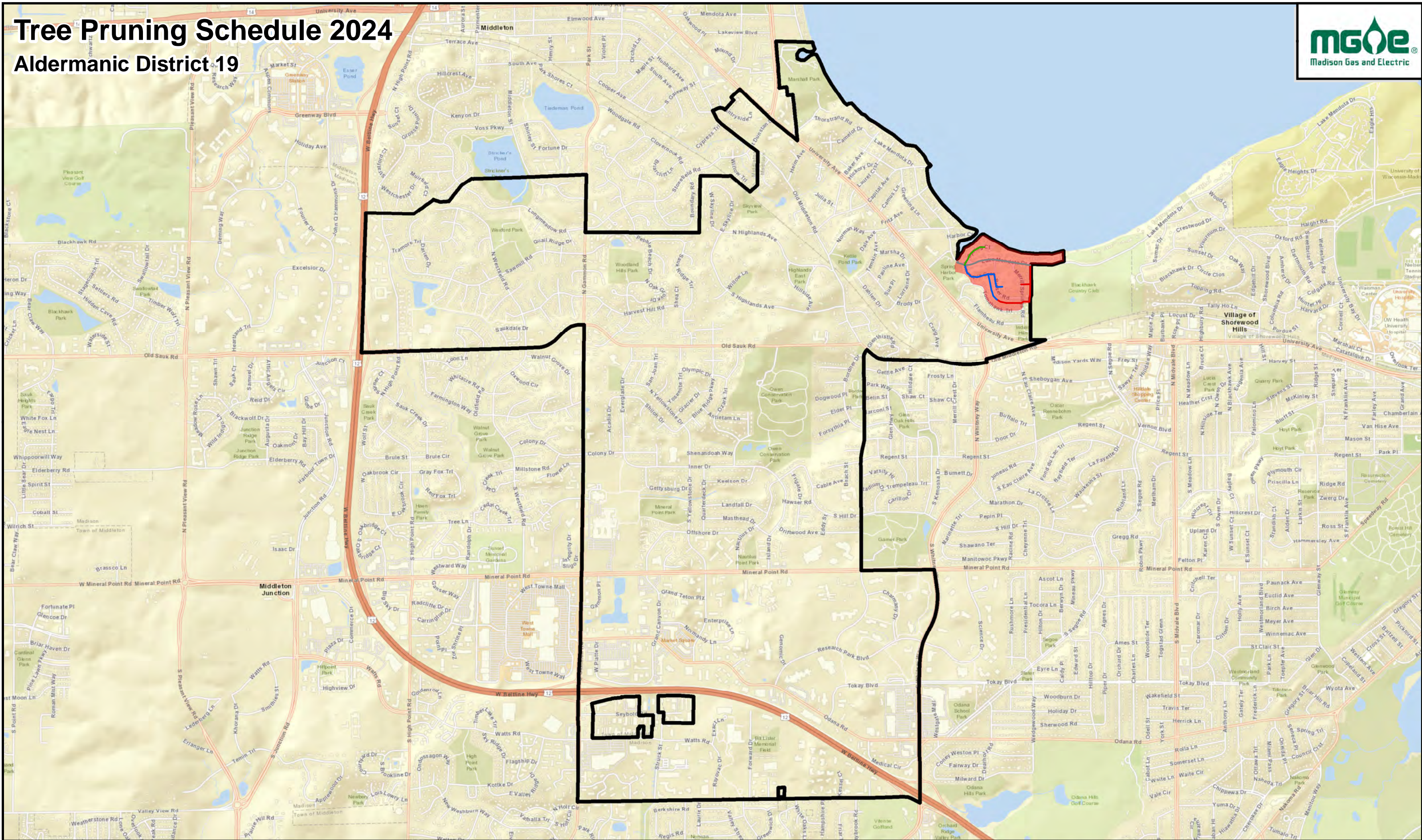
By accessing this Information, you agree and acknowledge that receipt of the Information in no way releases you from following required and standard protocols in the course of normal business including but not limited to calling and relying upon Digger's Hotline.

By using the Information you hereby release MGE, its officers, directors, employees and agents from any responsibility or liability associated with its use. In no event will MGE be liable for any damages whatsoever that may arise out of the use of the Information.

For questions, contact Steve Marymee (smarymee@mge.com) or Zach Lindfors (zclindfors@mge.com)

Tree Pruning Schedule 2024

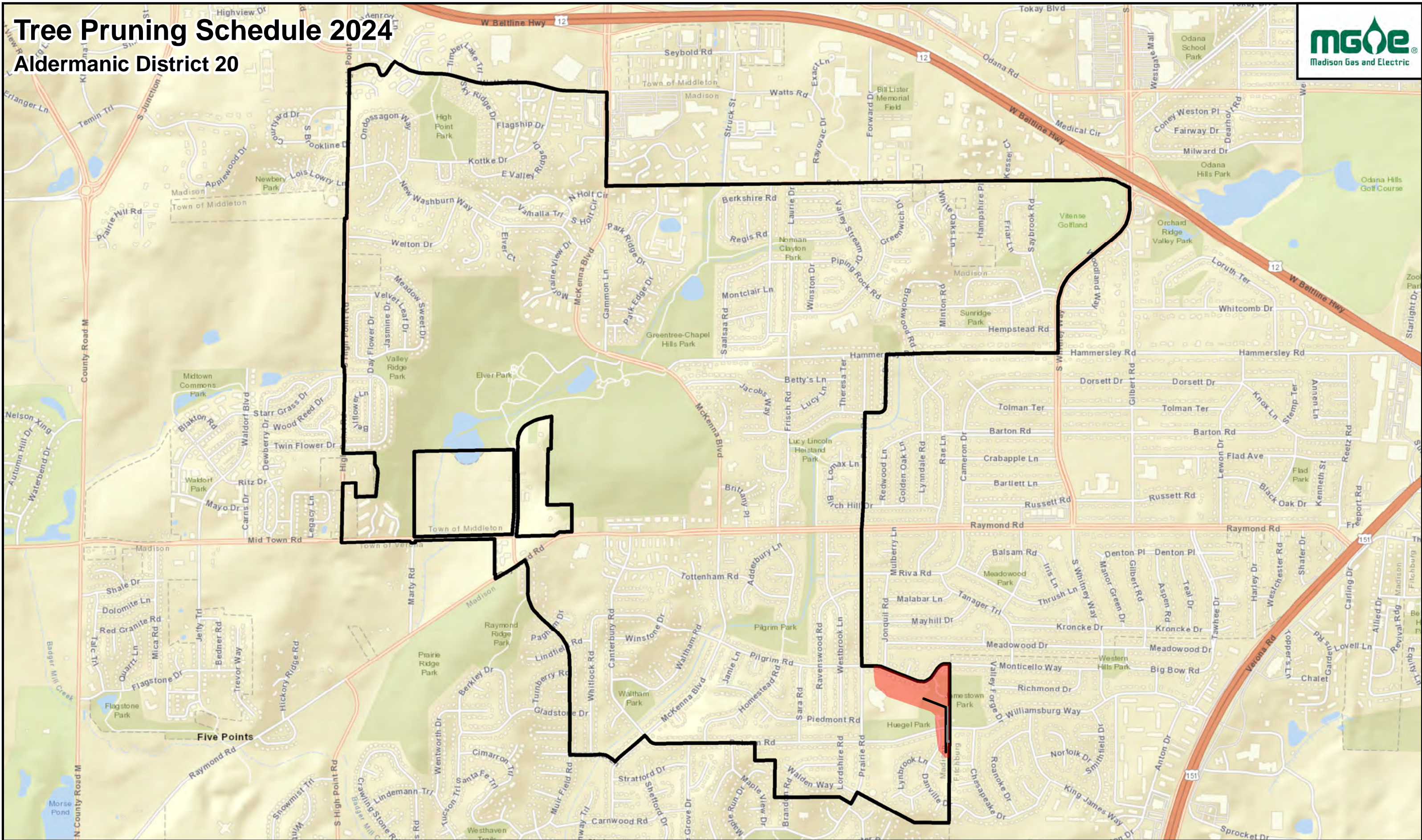
Aldermanic District 19



GIS Data / Mapping Disclaimer
Madison Gas and Electric Company ("MGE") is providing you access to its GIS mapping data ("Information"), in electronic format or print format, as a resource of general information for use "as-is." The Information provided is for reference purposes only and is and shall remain the property of MGE. This Information may not be copied, distributed, rented, or altered for subsequent use, in whole or in part, without the express written consent of MGE. The Information provided may contain inaccuracies or errors. Source data used for the Information may have been collected at different scales, times or definitions, resulting in inconsistencies among features represented together as part of this Information. MGE makes no representation regarding the accuracy, reliability, or completeness of the information. The use of this Information is at your own risk. By accessing this Information, you agree and acknowledge that receipt of the Information in no way releases you from following required and standard protocols in the course of normal business including but not limited to calling and relying upon Digger's Hotline. By using the Information you hereby release MGE, its officers, directors, employees and agents from any responsibility or liability associated with its use. In no event will MGE be liable for any damages whatsoever that may arise out of the use of the Information. For questions, contact Steve Marymee (smarymee@mge.com) or Zach Lindfors (zlindefors@mge.com)

Tree Pruning Schedule 2024

Aldermanic District 20



GIS Data / Mapping Disclaimer
Madison Gas and Electric Company ("MGE") is providing you access to its GIS mapping data ("Information"), in electronic format or print format, as a resource of general information for use "as-is." The Information provided is for reference purposes only and is and shall remain the property of MGE. This Information may not be copied, distributed, rented, or altered for subsequent use, in whole or in part, without the express written consent of MGE. The Information provided may contain inaccuracies or errors. Source data used for the Information may have been collected at different scales, times or definitions, resulting in inconsistencies among features represented together as part of this Information. MGE makes no representation regarding the accuracy, reliability, or completeness of the information. The use of this Information is at your own risk. By accessing this Information, you agree and acknowledge that receipt of the Information in no way releases you from following required and standard protocols in the course of normal business including but not limited to calling and relying upon Digger's Hotline. By using the Information you hereby release MGE, its officers, directors, employees and agents from any responsibility or liability associated with its use. In no event will MGE be liable for any damages whatsoever that may arise out of the use of the Information. For questions, contact Steve Marymee (smarymee@mge.com) or Zach Lindfors (zclindfors@mge.com)

Notice of Application for City of Madison Tree Pruning Permit

In order to prune City of Madison-owned trees within the public right-of-way of any street, alley, highway or greenway MGE is required to apply for a permit; MGE Forestry works with the City Forester and the City of Madison Streets Division on a yearly plan to prevent over-pruning of City-owned trees. MGE's 2024 plan for pruning trees on the public rights-of-ways will be considered by the Habitat Stewardship Subcommittee on Tuesday, February 13, 2024, at 4:30 P.M., via virtual meeting.

If you wish to speak at the virtual meeting, you must register. You can register at www.cityofmadison.com/city-hall/committees/meeting-schedule. Registration will open when the meeting is published on the Calendar, typically around noon on the Friday preceding the meeting, in this instance Friday, February 9, 2024. Interested participants can search for the date, click on the Habitat Stewardship Subcommittee meeting, then click "Register for Public Comment."

If you require an interpreter, materials in alternate formats, or other accommodations to access this public hearing, please contact City of Madison Parks Department at (608) 266-4711 or email us at habitatstewardshipsubcommittee@cityofmadison.com. Please make contact at least 72 hours prior to the date of this public hearing so that we can make proper accommodations.

Your safety and our electric system reliability are both important to us. Line clearance pruning is done to minimize tree-related storm damage and tree-caused electric system outages and conflicts. As a National Arbor Day "Tree Line USA Utility," we are concerned about the health and appearance of trees in your neighborhood. Our contract crews prune according to industry Best Management Practices as outlined by the International Society of Arboriculture. The crews also undergo yearly work- and safety-related training.

If your trees require pruning, you will receive further notification before line clearance work begins.



Madison Gas and Electric Company
P.O. Box 1231
Madison, Wisconsin 53701-1231

PRESORTED
FIRST CLASS

Tree pruning in your neighborhood

Madison Gas and Electric (MGE) will be performing line clearance tree pruning in your neighborhood in the next few months. This postcard is the first of a two-part notification process before we begin our pruning work. Along with this postcard, you can expect to see an MGE Consulting Utility Arborist (CUA) in your neighborhood soon.

Our International Society of Arboriculture-certified CUAs will conduct a full inspection and assessment of all MGE's overhead electric facilities for vegetation conflicts in your neighborhood. You will be notified about any proposed pruning on your property prior to the work starting. MGE's goal is to prune for five years of clearance and remove tall-growing species under our primary wires.

As a recognized Tree Line USA utility for more than 20 years, MGE trains our tree service contractors to follow industry-accepted best management practices and internationally accepted tree-pruning methods. MGE's line clearance pruning is necessary for your safety, to help prevent storm damage, and to minimize electrical outages related to tree/wire conflicts. We thank you for your cooperation in our efforts.

If you have questions or special circumstances we should be aware of, such as a dog in the yard, a locked gate, or a tree you would like removed, please call MGE's Forestry Line at 608-252-7186 or 1-800-245-1125.



The amount of pruning is based on the type of tree and how close the tree is to the wires. These are examples of pruning according to international pruning standards.





Madison Gas and Electric Company
P.O. Box 1231
Madison, Wisconsin 53701-1231

PRESORTED
FIRST CLASS

Tree pruning

The amount of pruning is based on the type of tree and how close the tree is to the wires. These are examples of pruning according to international pruning standards.



Planting near power lines?

Use our online selection guide to pick the best tree or shrub for your yard. Visit mge.com/trees. We also have a printed guide called *Power Planting*. Just call 252-7222 to get a copy, or download it at mge.com/brochures.

Small trees

(less than 25 feet tall)

Flowering Crabapple,
Hawthorne, Lilac,
Shrubs

Tall trees

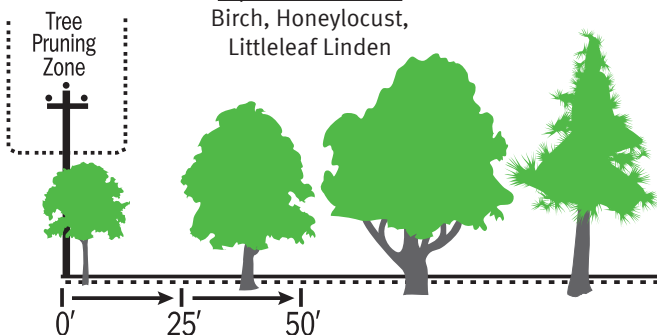
(more than 40 feet tall)

Ash, Maple, Oak

Medium trees

(up to 40 feet tall)

Birch, Honeylocust,
Littleleaf Linden





Madison Gas and Electric (MGE) will be pruning trees in your neighborhood. We prune trees near power lines for your safety, to prevent storm damage and to minimize electrical outages.

As a recognized Tree Line USA utility, MGE trains our tree service contractors to prune trees according to international pruning standards. They will prune to attain approximately four years of safe clearance.

You will be notified with more specific information prior to our crew starting work on your property. If a tree needs extensive pruning, you may talk to our crew about other options such as removing the tree.

If you have any questions or special circumstances we should be aware of, such as a dog in the yard or a tree you would like removed, please contact MGE's Forestry Line at 252-7186 or 1-800-245-1125.





Map Number

LINE CLEARANCE WORK NOTICE

Madison Gas and Electric Company (MGE) contracts with a professional line-clearing contractor to perform necessary tree pruning and/or sapling removal. There is no charge to you to perform this work. Crews will prune for approximately five years' growth. All brush will be chipped and removed. Learn more about MGE's tree-pruning process by visiting mge.com/pruning.

Work Location

Back Yard Front Yard Side Yard

Wire Type

Pole to Pole Pole to House

Work to be Done

Pruning

Qty.	Species	Notes

Sapling Removal

Y/N	Description

Work Access

We may need to drive equipment onto your property. This will only be done if site conditions allow.

Site	Y/N	Notes
Yard		
Driveway		

5.5" x 11"

Please call the forestry representative if herbicide use is desired or you require further notification before the work is performed.

Forestry Representative _____ Date _____
Phone _____

5.5" x 11"

MGE is committed to providing safe and reliable energy to our customers. Inadequate line clearance can create safety hazards and cause service interruptions to you, your neighbors and your community. As a recognized Tree Line USA utility, MGE thoroughly trains our tree service contractors to prune trees following international pruning standards. Our contractors are active members of the International Society of Arboriculture, the Wisconsin Arborist Association and the National Arbor Day Foundation. We admire beautiful trees and will make every effort to be fair with both you as our customer and the tree.





Madison Gas and Electric Company

P.O. Box 1231
Madison, WI 53701-1231
608-252-7000

your community energy company

January 12, 2024

Sent Via Email
lbrown@cityofmadison.com

Mr. Ian Brown
City of Madison Urban Forestry
Madison Streets Division
1402 Wingra Creek Parkway
Madison WI 53715

Subject: Tree Pruning Notice

Dear Mr. Brown:

This letter is to confirm that on Friday, January 12, 2024, Madison Gas and Electric Company delivered to the U.S. Post Office the following mailer:

- Tree Pruning Notice Postcard Mailer - City of Madison - 2024

If you have any further questions, please email me at dmaurer@mge.com or call me at 252-7913.

Sincerely,

Douglas J. Maurer
Manager Office Services

bw

cc: Tim Meisenheimer, MGE