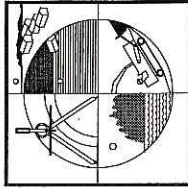
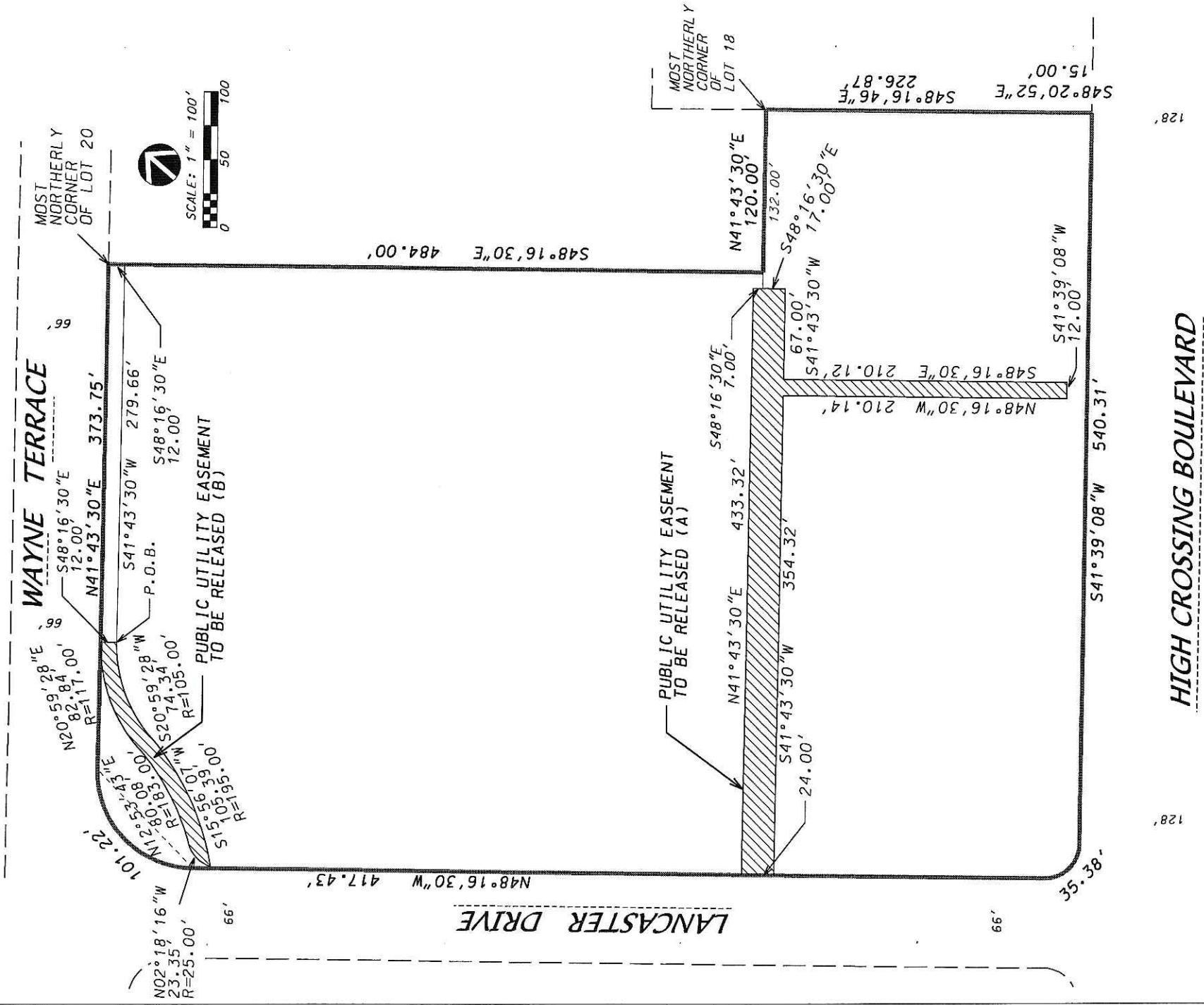


EASEMENTS TO BE RELEASED

Lots 18, 19 and 20, East Towne Burke Plat, located in the NE 1/4, NW 1/4, SW 1/4 and SE 1/4 of the SE 1/4 of Section 22, T8N, R10E, City of Madison, Dane County, Wisconsin



**D'ONOFRIO, KOTTKE
AND ASSOCIATES, INC.**

7530 WESTWARD WAY
MADISON, WISCONSIN 53717
TEL: 608-833-7530
FAX: 608-833-1089

HIGH CROSSING BOULEVARD