

# Joint Campus Area Committee

University of Wisconsin - Madison

March 13, 2019

## Linden Drive Parking Garage

UW Madison Campus

Project No. 1711F



## Linden Drive Parking Garage

- The five-story precast concrete structure will house 600+ parking stalls, 14 motorcycle, 51 bicycle stalls.
- Small maintenance office and work space with a storage room for UW Transportation Services equipment.
- The facility is designed with a three-bay (parking aisle) layout, One-way traffic circulation within exterior parking aisles, Two-way traffic circulation (within center parking aisle ramps).
- Complies with UW Design Guidelines (8'-2" ground level, 7'-2" upper level vertical clearance, 8'-6" stall width)
- ADA parking stall placement is located to address the needs of the surrounding buildings
- The structure is designed to accommodate a future sixth level of parking and solar panels above the top level.
- The facility has two separate entry/exit locations. The main vehicle entry and exit drives will be on the new north-south street. Secondary entry and exit lanes will access the structure from Linden Drive.
- Stair and elevator towers are located in the NE and SW corners of the garage to provide for pedestrian circulation to adjacent Academic Buildings. UW Natatorium, Meat Science Building to the North and the SVM to the Southwest.
- Stair and elevation towers incorporate glass exteriors for high visibility. Site & exterior design have in CTPDE
- A new north-south street will be created along the western side of the parking garage to connect Linden Drive to Observatory Drive. The new intersection on Linden Drive will provide a raised crossing to SVM.
- Materials were selected to fit with the surrounding West Campus Academic Buildings.
- On site storm water retention areas are designed to meet Campus requirements
- A snow chute is included to provide for snow removal from the upper levels of the garage.
- The existing steam utility running along Linden Drive will be rerouted to the along the eastern side of the SVM to provide service to SVM and provide a redundant loop in the Campus steam network.



UW Campus Master Plan – Near West Campus Neighborhood

Observatory Drive

Vet. Med Addition

Parking  
Garage

Linden Drive

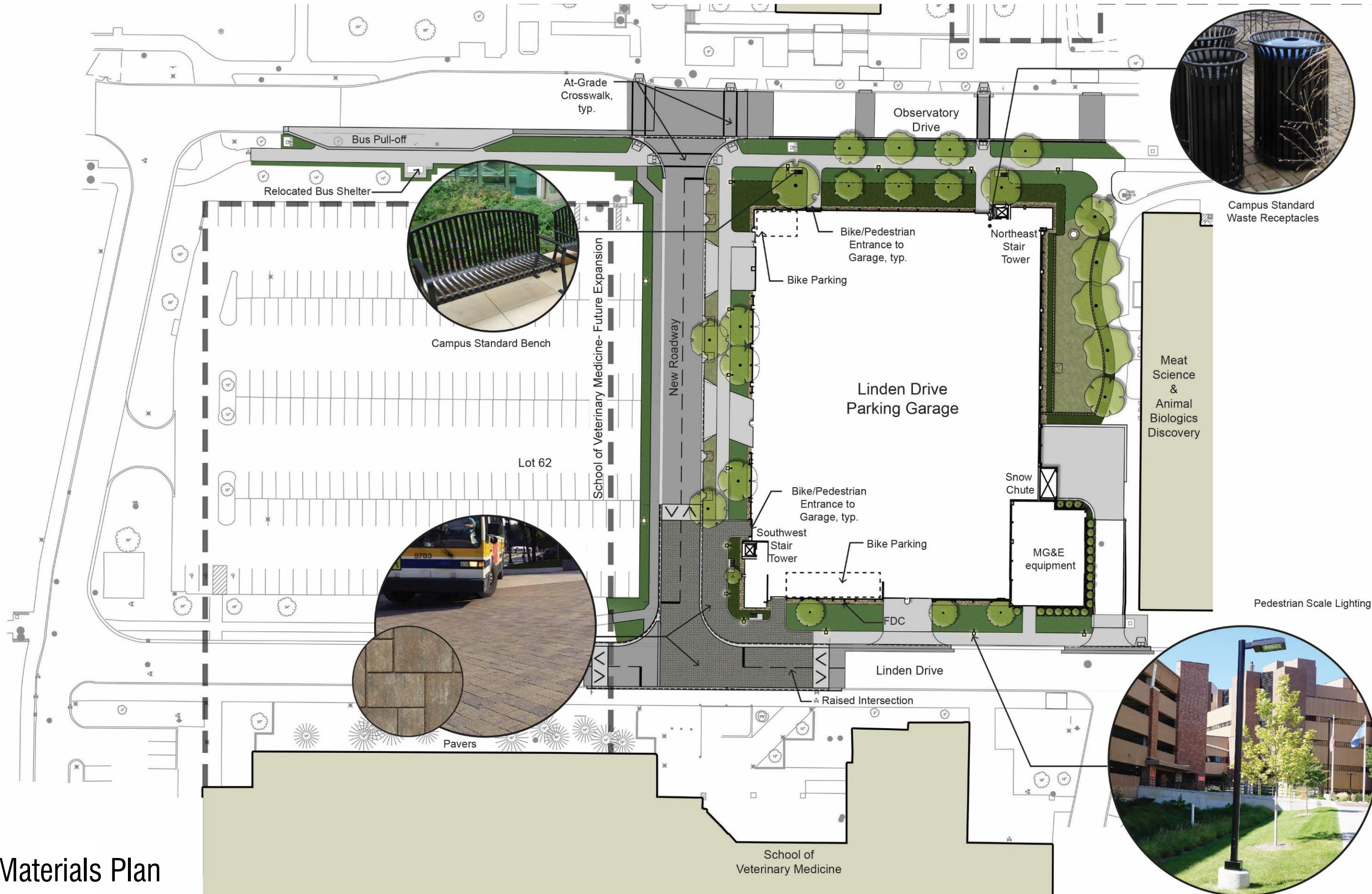
School of Veterinary Medicine

Site with future SVM Addition

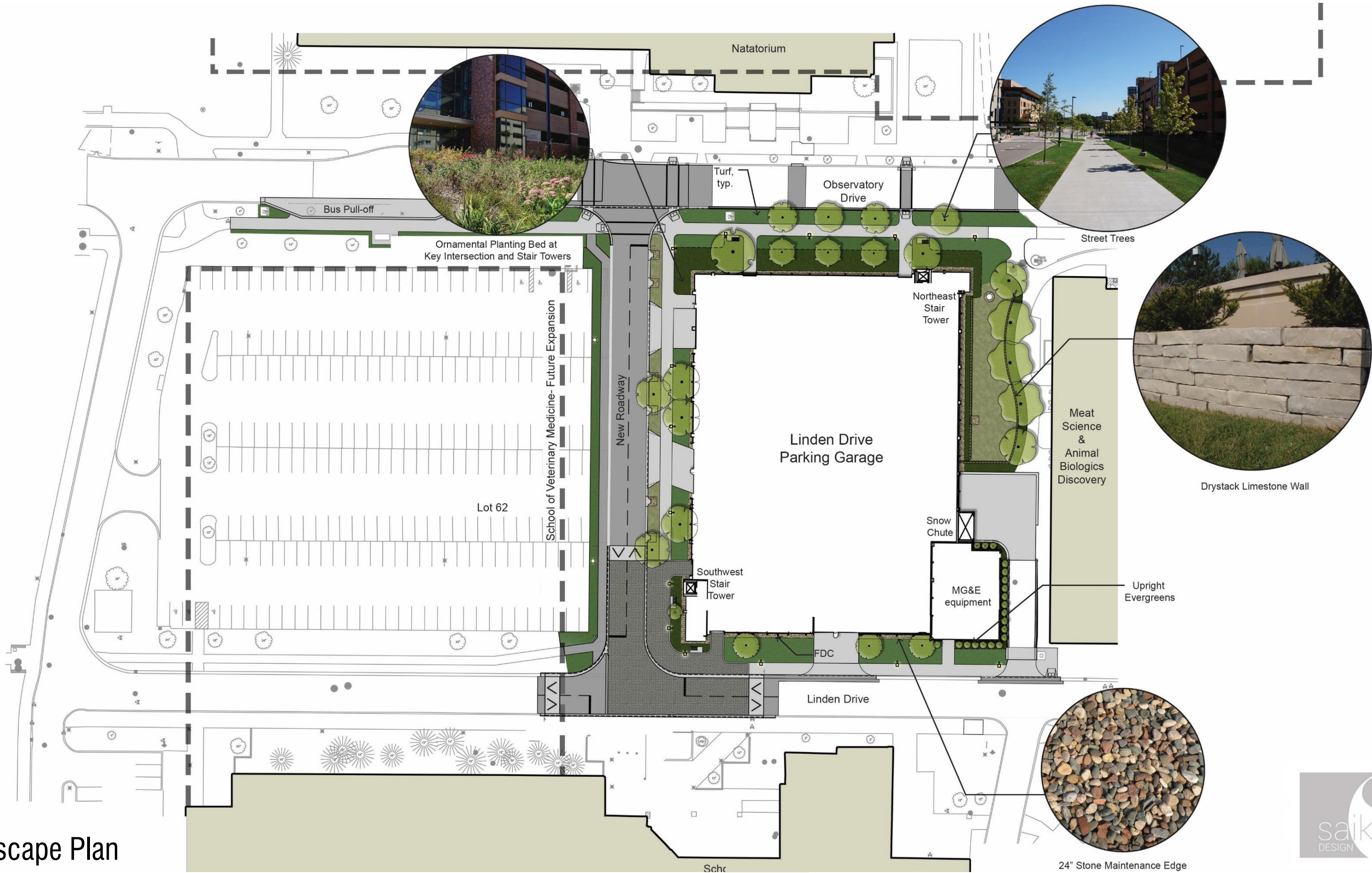
Site Plan



# Materials Plan



# Landscape Plan

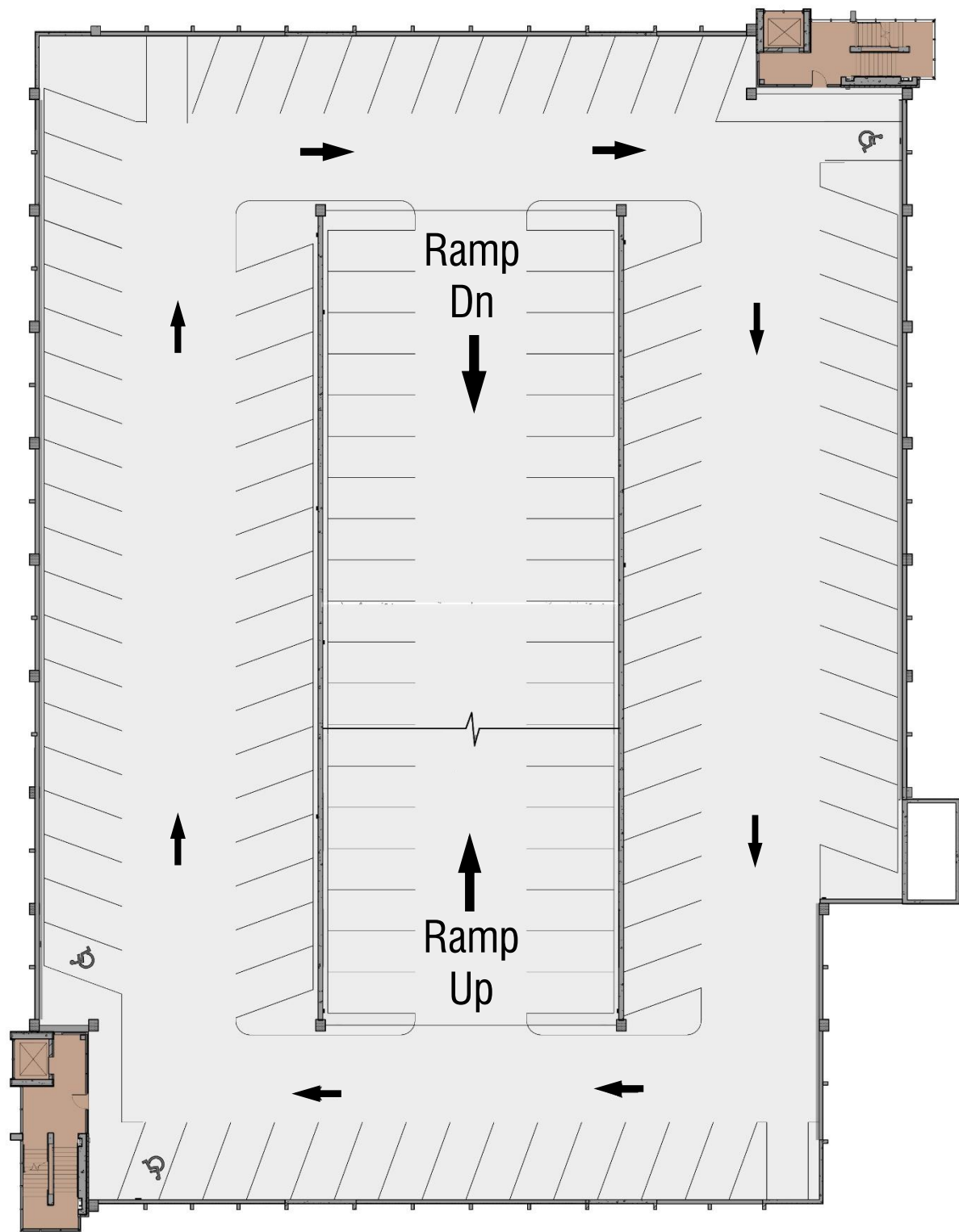


First Floor Plan

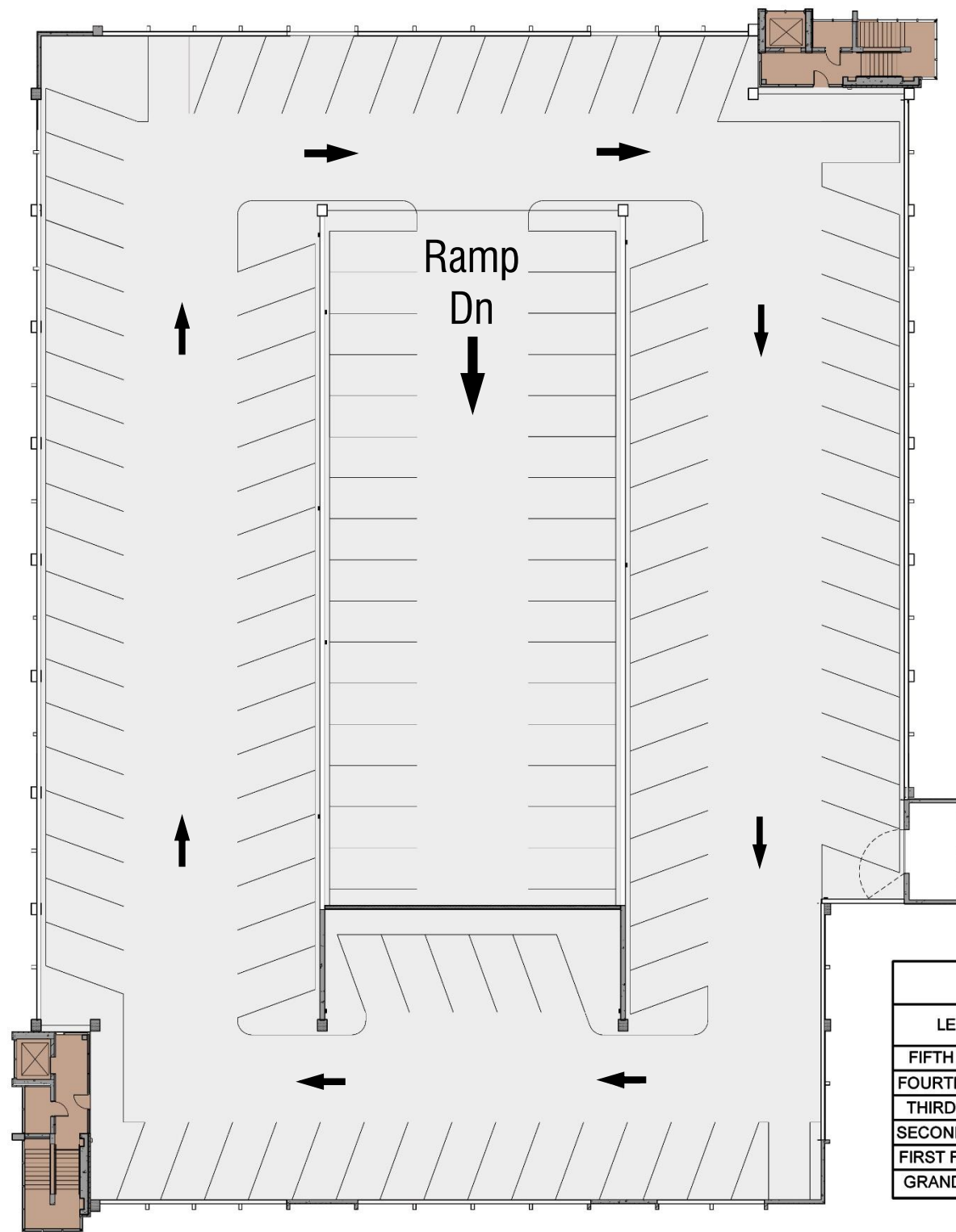


PARKING SUMMARY			
LEVEL	8'-6" WIDE SPACES	ACCESSIBLE SPACES	TOTAL SPACES
FIFTH FLOOR	103	0	103
FOURTH FLOOR	136	0	136
THIRD FLOOR	136	0	136
SECOND FLOOR	133	3	136
FIRST FLOOR	79	10	89
GRAND TOTAL			600





Second to Fourth Floor Plans



Fifth Floor Plan

PARKING SUMMARY			
LEVEL	8'-6" WIDE SPACES	ACCESSIBLE SPACES	TOTAL SPACES
FIFTH FLOOR	103	0	103
FOURTH FLOOR	136	0	136
THIRD FLOOR	136	0	136
SECOND FLOOR	133	3	136
FIRST FLOOR	79	10	89
GRAND TOTAL			600



# Contextual Buildings



Brick



Precast Concrete

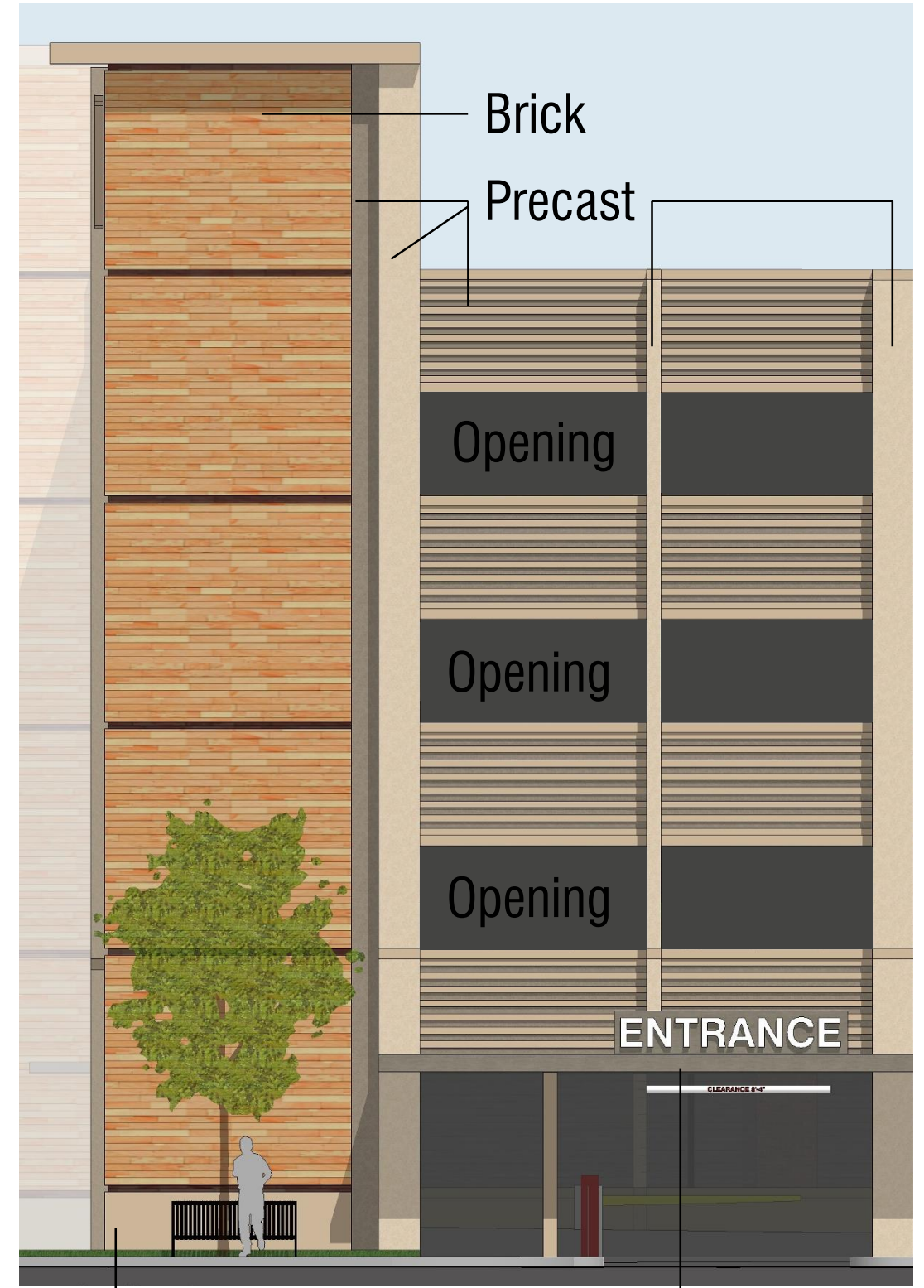


Stainless steel  
Hand & Guardrails  
Elevator Finishes



Champagne  
Curtainwall &  
Entry Canopies

Metals



Materials



NW perspective along Observatory Drive



NE perspective along Observatory Drive



SW perspective along Linden Drive



SE perspective along Linden Drive

Design Review Board	March 2019
UWSA Regents Approval	April 2019
SBC Approval	April 2019
Final Review:	April 19, 2019
Bid Documents:	May 31, 2019
MEP Bid Opening:	July 16, 2019
GPC Bid Opening:	July 30, 2019
Start of Construction:	September 2019
Substantial Completion:	December 2020
Occupancy:	January 2021
Site Substantial Completion:	May 2021



# Joint Campus Area Committee

University of Wisconsin - Madison

March 13, 2019

## Linden Drive Parking Garage

UW Madison Campus

Project No. 1711F

