

APPLICATION FOR  
URBAN DESIGN COMMISSION  
REVIEW AND APPROVAL

AGENDA ITEM # \_\_\_\_\_  
Project # \_\_\_\_\_

DATE SUBMITTED: <u>11-29-06</u>	<b>Action Requested</b>
UDC MEETING DATE: <u>12-06-06</u>	<input type="checkbox"/> Informational Presentation
	<input type="checkbox"/> Initial Approval and/or Recommendation
	<input checked="" type="checkbox"/> Final Approval and/or Recommendation

PROJECT ADDRESS: 1610 Gilson Street

ALDERMANIC DISTRICT: 13 - Isadore Knox

OWNER/DEVELOPER (Partners and/or Principals) ARCHITECT/DESIGNER/OR AGENT:

BESHM Investment Group, LLC

Bouxil Design Studio

1610 Gilson Street

6602 Grand Teton Plaza #150

Madison, WI 53715

Madison, WI 53719

CONTACT PERSON: Clarence Brown

Address: 1610 Gilson Street  
Madison, WI 53715

Phone: 608-250-0099

Fax: \_\_\_\_\_

E-mail address: banksdevelopment@yahoo.com

TYPE OF PROJECT:

(See Section A for:)

- Planned Unit Development (PUD)  
 General Development Plan (GDP)  
 Specific Implementation Plan (SIP)  
 Planned Community Development (PCD)  
 General Development Plan (GDP)  
 Specific Implementation Plan (SIP)  
 Planned Residential Development (PRD)  
 New Construction or Exterior Remodeling in an Urban Design District \* (A public hearing is required as well as a fee)  
 School, Public Building or Space (Fee may be required)  
 New Construction or Addition to or Remodeling of a Retail, Hotel or Motel Building Exceeding 40,000 Sq. Ft.  
 Planned Commercial Site

(See Section B for:)

- New Construction or Exterior Remodeling in C4 District (Fee required)

(See Section C for:)

- R.P.S.M. Parking Variance (Fee required)

(See Section D for:)

- Comprehensive Design Review\* (Fee required)

- Street Graphics Variance\* (Fee required)

- Other \_\_\_\_\_

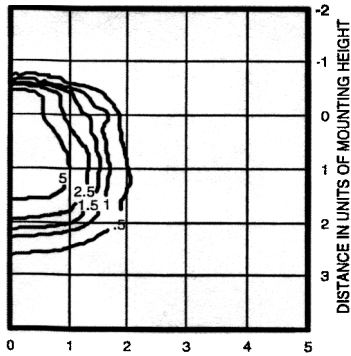
\*Public Hearing Required (Submission Deadline 3 Weeks in Advance of Meeting Date)

Where fees are required (as noted above) they apply with the first submittal for either initial or final approval of a project.

# WST Metal Halide, High Pressure Sodium Building Mounted

## WST 175M FT TEST NO: LTL11069

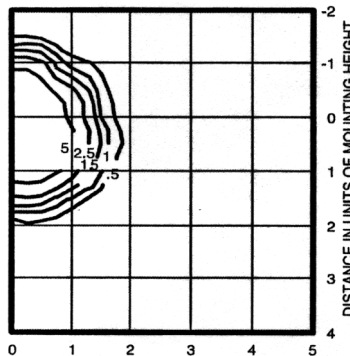
ISOILLUMINANCE PLOT (Footcandle)



175W metal halide lamp, horizontal lamp orientation  
Footcandle values based on 12' mounting height, 12800 rated lumens.  
Luminaire Efficiency: 52.9%

## WST 175M MD TEST NO: LTL11068

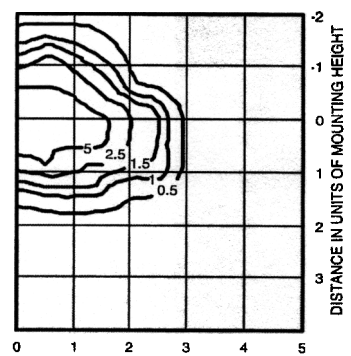
ISOILLUMINANCE PLOT (Footcandle)



175W metal halide lamp, horizontal lamp orientation  
Footcandle values based on 12' mounting height, 11080 rated lumens.  
Luminaire Efficiency: 60.2%

## WST 175M WT TEST NO: LTL11070

ISOILLUMINANCE PLOT (Footcandle)



175W metal halide lamp, horizontal lamp orientation  
Footcandle values based on 12' mounting height, 12800 rated lumens.  
Luminaire Efficiency: 62.4%

Lamp	Initial Lumens	Mounting Height			
		10'	12'	14'	16'
<b>Metal Halide</b>					
50W MH	3,900	0.43	0.30	0.22	0.17
70W MH	5,500	0.62	0.43	0.31	0.24
100W MH	8,500	0.95	0.66	0.48	0.37
150W MH	12,500	1.41	0.98	0.72	0.55
175W MH	12,800	1.44	1.0	0.73	0.56
<b>High Pressure Sodium</b>					
35W HPS	2,250	0.26	0.18	0.13	0.10
50W HPS	4,000	0.45	0.31	0.23	0.17
70W HPS	6,400	0.72	0.50	0.37	0.28
100W HPS	9,500	1.07	0.74	0.54	0.41
150W HPS	16,000	1.80	1.25	0.91	0.70



## FEATURES & SPECIFICATIONS

**INTENDED USE**— For building- and wall-mounted applications.

**CONSTRUCTION** — Rugged, die-cast, single-piece aluminum housing. Die-cast door frame has a 1/8" thick tempered glass lens. Door frame is fully gasketed with one-piece solid silicone.

**FINISH** — Standard finish is new textured dark bronze (DBT) corrosion-resistant polyester powder finish, with other architectural colors available.

**OPTICAL SYSTEM** — Segmented reflectors for superior uniformity and control. Reflectors are interchangeable. Three full cutoff distributions available: FT (forward throw), MD (medium throw) and WT (wide throw).

**ELECTRICAL SYSTEM** — 50W-150W utilizes a high reactance, high power factor ballast. 35S utilizes a reactance high power factor ballast. 175W utilizes a constant-wattage autotransformer ballast. Quick disconnect plug easily disconnects reflector from ballast. Ballasts are copper-wound and 100% factory-tested. Porcelain, medium-base socket with copper alloy, nickel-plated screw shell and center contact. UL listed 660W, 600V 4KV pulse rated.

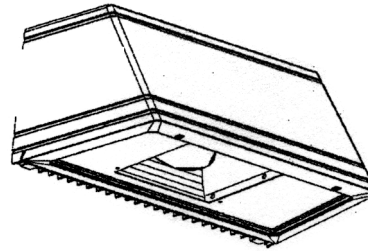
**INSTALLATION** — Universal mounting mechanism with integral mounting support allows fixture to hinge down. Bubble level provides correct alignment with each installation.

**LISTING** — UL Listed (standard). CSA Certified (see Options). Suitable for wet locations (damp location listed in lens-up orientation). WLU option offers wet location listing in up orientation (see Options). IP65 rated.

Catalog Number		<b>WALL MOUNTED AREA LIGHT</b>	
Notes		Type	
100 WATT METAL HALIDE		<b>X4</b>	

Decorative Wall-Mounted Lighting

# WST



**METAL HALIDE**  
50W-175W  
**HIGH PRESSURE SODIUM**  
35W-150W

### Specifications

Length: 16.25 (41.2)  
Depth: 9.13 (23.2)  
Overall Height: 7.25 (18.4)  
Max. Weight: 30 lbs (13.6 kg)

All dimensions are inches (centimeters) unless otherwise specified.

## ORDERING INFORMATION

Choose the boldface catalog nomenclature that best suits your needs and write it on the appropriate line.

Example: **WST 175M FT 120 SF LPI DNAT**

WST	100M	WT	120	SF
Series	Wattage/source	Distribution	Voltage	Options
<b>WST</b>	<u>High pressure sodium</u>	<b>FT</b> Forward throw	<b>120</b>	<u>Shipped installed in fixture</u>
	<b>35S<sup>1</sup></b>	<b>MD</b> Medium throw	<b>208<sup>2</sup></b>	<b>SF</b> Single fuse (120, 277, 347V, n/a TB)
	<b>50S</b>	(coated lamp std.)	<b>240<sup>2</sup></b>	<b>DF</b> Double fuse (208, 240V, n/a TB or TBV)
	<b>70S</b>	<b>WT</b> Wide throw	<b>277</b>	<b>EC</b> Emergency circuit (25W max 120V, incandescent lamp included) <sup>5</sup>
	<b>100S</b>		<b>347</b>	<b>DC12</b> Emergency circuit 12 volt (35W lamp included std.) <sup>6</sup>
	<b>150S</b>		<b>TB<sup>3</sup></b>	<b>2DC12</b> Emergency circuit 12 volt (2, 35W lamps included) <sup>6</sup>
			<b>TBV<sup>4</sup></b>	<b>DC2012</b> Emergency circuit 12 volt (20W lamp included) <sup>6</sup>
	<u>Metal halide</u>			<b>2DC2012</b> Emergency circuit 12 volt (2, 20W lamps included) <sup>6</sup>
	<b>50M</b>			<b>QRS</b> Quartz restrike system (100W max 120V, quartz lamp not included) <sup>7</sup>
	<b>70M</b>			<b>CR</b> Enhanced corrosion resistance
	<b>100M</b>			<b>CRT</b> Non-stick protective coating (black only)
	<b>150M</b>			<b>PE</b> Photoelectric cell-button type (n/a TB/TBV) <sup>8</sup>
	<b>175M</b>			<b>WLU</b> Wet location door for up orientation
				<b>IBS</b> Internal backlight shield <sup>9</sup>
				<b>DFL</b> Diffusing lens
				<b>LPI</b> Lamp included (std)
				<b>L/LP</b> Less lamp
				<b>CSA</b> CSA Certified
				<u>Shipped separately</u>
				<b>WSBBW</b> Surface-mounted back box
				<b>UT5</b> Uptilt 5 degrees
				<b>WSTWG</b> Wire guard <sup>8</sup>
				<b>WSTVG</b> Vandal guard <sup>8</sup>
				<u>Architectural colors<sup>10</sup></u>
				<u>Standard textured colors</u>
				<b>DBT</b> Dark bronze (std.)
				<b>DSST</b> Sandstone
				<b>DNAT</b> Natural aluminum
				<b>DWHG</b> White
				<b>DBLB</b> Black
				<u>Optional textured colors</u>
				<b>DBNH</b> Bronze
				<b>DSPD</b> Dark gray
				<b>DSPJ</b> Light gray
				<b>DSPE</b> Green
				<b>DSPG</b> Dark red
				<b>DSPF</b> Rust
				<b>DSPH</b> Red
				<u>Striping</u>
				<b>SDDB</b> Dark bronze
				<b>SDWH</b> White
				<b>SDBL</b> Black
				<b>SDNA</b> Natural aluminum
				<b>SDTG</b> Tennis green
				<b>SDBR</b> Bright red
				<b>SDBUA</b> Dark blue
				<b>SDGYM</b> Gray
				<b>SDYLB</b> Yellow

### NOTES:

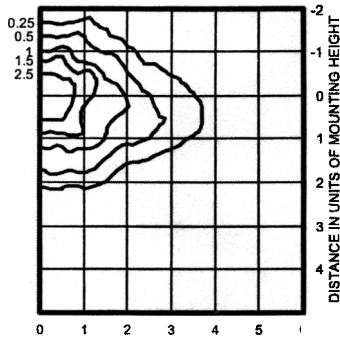
- 120V only.
- Consult factory for availability in Canada.
- Optional multi-tap ballast (120, 208, 240, 277V; 120, 277, 347V in Canada).
- Optional penta-tap ballast (120, 208, 240, 277, 480V; not available in Canada). 175W metal halide only.
- Not available with QRS.
- Not available with SF, DF or QRS.
- Not available with EC
- Must be ordered with fixture; cannot be field installed.
- Not available with medium throw (MD) distribution.
- Additional architectural colors available; see [www.lithonia.com](http://www.lithonia.com) for more information.

# AST1 Metal Halide Area Lighting

## Coefficient of Utilization Initial Footcandles

AST1 175M SR2

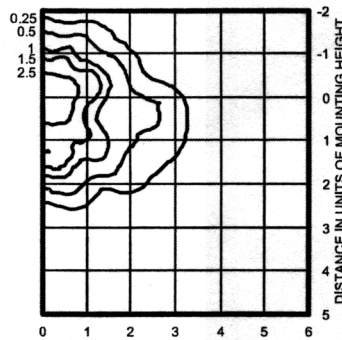
TEST NO: LTL10086



175W lamp, rated 12800 lumens. Footcandle values based on 20' mounting height.  
Classification: Type II, Medium, Full Cutoff

AST1 175M SR3

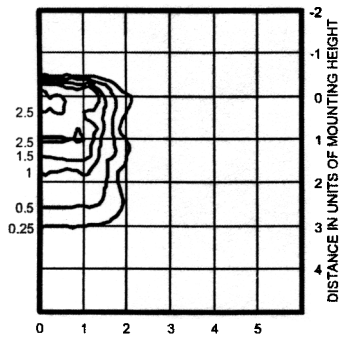
TEST NO: LTL10087



175W lamp, rated 12800 lumens. Footcandle values based on 20' mounting height.  
Classification: Type III, Medium, Full Cutoff

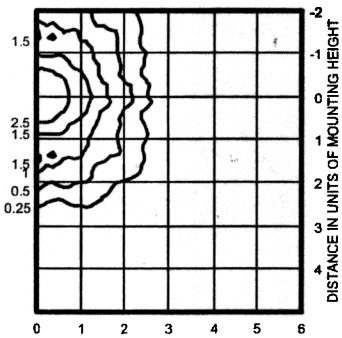
AST1 175M SR4SC

TEST NO: LTL10088



175W lamp, rated 12800 lumens. Footcandle values based on 20' mounting height.  
Classification: Type IV, Short, Full Cutoff

TEST NO: LTL10089



175W lamp, rated 12800 lumens. Footcandle values based on 20' mounting height.  
Classification: Unclassified (Type V), Full Cutoff

**NOTES:**

- 1 Photometric data for other distributions can be accessed from the Lithonia Lighting web site ([www.lithonia.com](http://www.lithonia.com)).
- 2 For electrical characteristics consult technical data tab.
- 3 Tested to current IESNA and NEMA standards under stabilized laboratory conditions. Various operating factors can cause differences between laboratory and actual field measurements. Dimensions and specifications are based on the most current data and are subject to change.

**Mounting Height Correction Factor**

(Multiply the fc level by the correction factor)

- 10 ft. = 4
- 15 ft. = 1.78
- 30 ft. = 0.44

$$\frac{\text{Existing Mounting Height}^2}{\text{New Mounting Height}^2} = \text{Correction Factor}$$



An Acuity Brands Company



## FEATURES & SPECIFICATIONS

### INTENDED USE

Streets, walkways, parking lots and surrounding areas.

### CONSTRUCTION

Rugged, die-cast, single-piece aluminum housing with nominal wall thickness of 1/8". Die-cast door frame has impact-resistant, tempered, glass lens (3/16" thick). Door frame is fully gasketed with one-piece tubular silicone and has tool-less entry and resealing.

### FINISH

Standard finish is dark bronze (DDB) polyester powder finish, with other architectural colors available.

### OPTICAL SYSTEM

Anodized segmented reflectors for superior uniformity and control. Reflectors attach with tool-less fasteners and are rotatable and interchangeable. Four full cutoff distributions available: Type II (roadway), Type III (asymmetric), Type IV (forward throw) and Type V (symmetric square).

### ELECTRICAL SYSTEM

150W and below utilizes a high reactance, high power factor ballast. 175W utilizes a constant-wattage autotransformer ballast. Ballasts are mounted on a removable power tray with tool-less latch and have positive locking disconnect plugs. Ballasts are copper-wound and 100% factory-tested. Optional Super CWA Pulse Start ballast (available with 150W only). Porcelain, medium-base socket with copper alloy, nickel-plated screw shell and center contact.

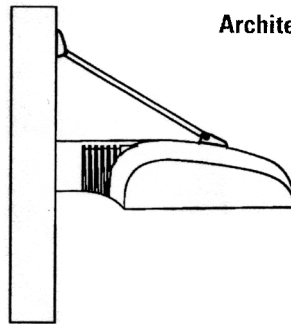
### INSTALLATION

Integral arm for pole or wall mounting. Optional mountings available. Additional backing plate and receiver used to mount tension rod.

### LISTING

UL Listed (standard). UL listed suitable for wet locations. CSA Certified (see options below).

Catalog Number		<b>POLE-MOUNTED AREA LIGHT - 15 FT SQ. POLE</b>	
Notes	100 WATT METAL HALIDE		Type
			<b>X3</b>

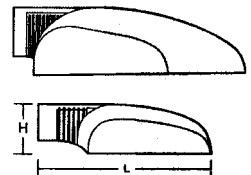


Architectural Area & Roadway Luminaires

# AST1

**METAL HALIDE**  
50W, 70W, 100W, 150W, 175W  
10' to 20' Mounting

## AERIS™



### Specifications

EPA: 0.7 ft<sup>2</sup>  
Length: 21.5 (54.5 cm)  
Width: 12.5 (31.7 cm)  
Depth: 6.3 (15.9 cm)  
Weight: 22 lbs (10 kg)

All dimensions are inches (centimeters) unless otherwise specified.

## ORDERING INFORMATION

Choose the boldface catalog nomenclature that best suits your needs and write it on the appropriate line. Order accessories as separate catalog number.

AST1 100M		S2	120	SPA		SF	
Series		Voltage		Mounting		Options	
AST1 50M <sup>1</sup>		120		SPA Square pole mounting (std)		<u>Shipped installed</u>	
AST1 70M <sup>1</sup>		208 <sup>2</sup>		RPA Round pole mounting		SF Single fuse (120, 277, 347, n/a TB) <sup>4</sup>	
AST1 100M		240 <sup>2</sup>		WBA Wall bracket		DF Double fuse (208, 240, 480V, n/a TB) <sup>4</sup>	
AST1 150M		277				PER NEMA twist-lock receptacle only (no photocontrol)	
AST1 175M		347				CR Enhanced corrosion resistance	
		480 <sup>2</sup>				QRS Quartz restrrike system (100W maximum, lamp not included) <sup>4</sup>	
		TB <sup>3</sup>				HS Houseside shield (SR2, SR3)	
						EC Emergency circuit	
						TP Tamperproof	
						SCWA Super CWA pulse start ballast (available with 150W only)	
						LPI Lamp included as standard	
						L/LP Less lamp	
						CSA CSA Certified	
						<u>Shipped separately</u> <sup>5</sup>	
						PE1 NEMA twist-lock PE (120, 208, 240V)	
						PE3 NEMA twist-lock PE (347V)	
						PE4 NEMA twist-lock PE (480V)	
						PE7 NEMA twist-lock PE (277V)	
						AS1VG Vandal guard	
						SC Shorting cap for PER option	
						<u>Architectural colors</u> <sup>6</sup>	
						<u>Standard colors</u>	
						DDB Dark bronze (standard)	
						DWH White	
						DBL Black	
						DNA Natural aluminum	
						DSS Sandstone	
						<u>Textured colors</u>	
						DSPD Dark gray	
						DSPJ Light gray	
						DBLB Black	
						DWHG White	
						DBNH Dark bronze	
						DSPE Green	
						DSPG Dark red	
						DSPH Red	
						DSPF Rust	
						DDBT Dark bronze	
						DNAT Natural aluminum	
						DSST Sandstone	

### NOTES:

- Not available with 480V.
- Consult factory for availability in Canada.
- Optional multi-tap ballast (120, 208, 240, 277V) (120, 277, 347V in Canada).
- SF, DF, or QRS options cannot be ordered together.
- May be ordered as an accessory.
- Additional architectural colors available; see www.lithonia.com for more information.

**Note:** Aeris Suspend has a unique drilling template that requires an Aeris Suspend drilling pattern to be specified when ordering poles. See example below.

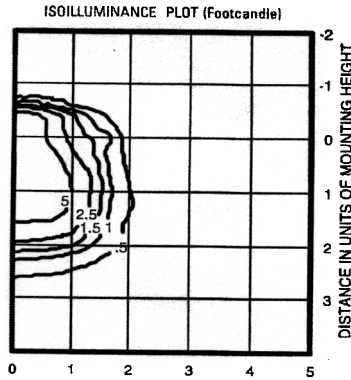
Example: SSA204CDM19AST1DDB

**Aeris Drilling Pattern**

DM19AST1 1 at 90 degrees  
DM28AST1 2 at 180 degrees  
DM29AST1 2 at 90 degrees  
DM39AST1 3 at 90 degrees  
DM49AST1 4 at 90 degrees  
DM32AST1 3 at 120 degrees (round poles only)

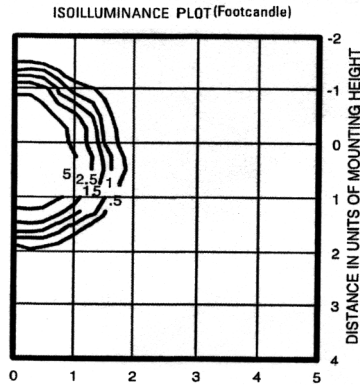
# WST Metal Halide, High Pressure Sodium Building Mounted

## WST 175M FT TEST NO: LTL11069



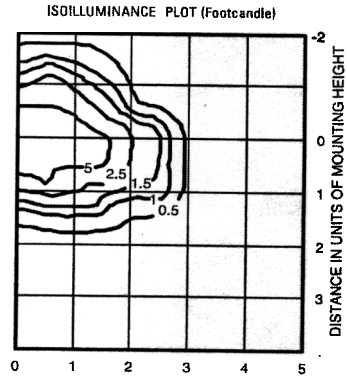
175W metal halide lamp, horizontal lamp orientation  
Footcandle values based on 12'  
mounting height, 12800 rated lumens.  
Luminaire Efficiency: 52.9%

## WST 175M MD TEST NO: LTL11068



175W metal halide lamp, horizontal lamp orientation  
Footcandle values based on 12'  
mounting height, 11080 rated lumens.  
Luminaire Efficiency: 60.2%

## WST 175M WT TEST NO: LTL11070



175W metal halide lamp, horizontal lamp orientation  
Footcandle values based on 12'  
mounting height, 12800 rated lumens.  
Luminaire Efficiency: 62.4%

Lamp	Initial Lumens	Mounting Height			
		10'	12'	14'	16'
<b>Metal Halide</b>					
50W MH	3,900	0.43	0.30	0.22	0.17
70W MH	5,500	0.62	0.43	0.31	0.24
100W MH	8,500	0.95	0.66	0.48	0.37
150W MH	12,500	1.41	0.98	0.72	0.55
175W MH	12,800	1.44	1.0	0.73	0.56
<b>High Pressure Sodium</b>					
35W HPS	2,250	0.26	0.18	0.13	0.10
50W HPS	4,000	0.45	0.31	0.23	0.17
70W HPS	6,400	0.72	0.50	0.37	0.28
100W HPS	9,500	1.07	0.74	0.54	0.41
150W HPS	16,000	1.80	1.25	0.91	0.70



## FEATURES & SPECIFICATIONS

**INTENDED USE**— For building- and wall-mounted applications.

**CONSTRUCTION** — Rugged, die-cast, single-piece aluminum housing. Die-cast door frame has a 1/8" thick tempered glass lens. Door frame is fully gasketed with one-piece solid silicone.

**FINISH** — Standard finish is **new** textured dark bronze (DBBT) corrosion-resistant polyester powder finish, with other architectural colors available.

**OPTICAL SYSTEM** — Segmented reflectors for superior uniformity and control. Reflectors are interchangeable. Three full cutoff distributions available: FT (forward throw), MD (medium throw) and WT (wide throw).

**ELECTRICAL SYSTEM** — 50W-150W utilizes a high reactance, high power factor ballast. 35S utilizes a reactance high power factor ballast. 175W utilizes a constant-wattage autotransformer ballast. Quick disconnect plug easily disconnects reflector from ballast. Ballasts are copper-wound and 100% factory-tested. Porcelain, medium-base socket with copper alloy, nickel-plated screw shell and center contact. UL listed 660W, 600V 4KV pulse rated.

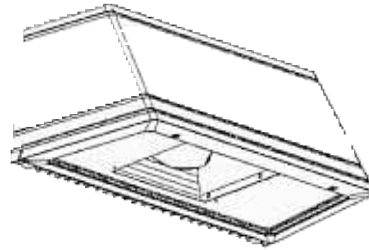
**INSTALLATION** — Universal mounting mechanism with integral mounting support allows fixture to hinge down. Bubble level provides correct alignment with each installation.

**LISTING** — UL Listed (standard). CSA Certified (see Options). Suitable for wet locations (damp location listed in lens-up orientation). WLU option offers wet location listing in up orientation (see Options). IP65 rated.

Catalog Number		<b>WALL MOUNTED AREA LIGHT</b>	
Notes		Type	
100 WATT METAL HALIDE		<b>X2</b>	

Decorative Wall-Mounted Lighting

# WST



**METAL HALIDE**  
50W-175W  
**HIGH PRESSURE SODIUM**  
35W-150W

### Specifications

Length: 16.25 (41.2)  
Depth: 9.13 (23.2)  
Overall Height: 7.25 (18.4)  
Max. Weight: 30 lbs (13.6 kg)

All dimensions are inches (centimeters) unless otherwise specified.

## ORDERING INFORMATION

Choose the boldface catalog nomenclature that best suits your needs and write it on the appropriate line.

WST		100M		MD		120		SF	
Series	Wattage/source	Distribution		Voltage		Options			
<b>WST</b>	<b>High pressure sodium</b>	<b>FT</b> Forward throw	<b>120</b>	<b>Shipped installed in fixture</b>		<b>Shipped separately</b>			
	35S <sup>1</sup>	<b>MD</b> Medium throw	208 <sup>2</sup>	<b>SF</b> Single fuse (120, 277, 347V, n/a TB)		<b>WSBBW</b> Surface-mounted back box			
	50S	(coated lamp std.)	240 <sup>2</sup>	<b>DF</b> Double fuse (208, 240V, n/a TB or TBV)		<b>UT5</b> Uptilt 5 degrees			
	70S	<b>WT</b> Wide throw	277	<b>EC</b> Emergency circuit (25W max 120V, incandescent lamp included) <sup>5</sup>		<b>WSTWG</b> Wire guard <sup>8</sup>			
	100S		347	<b>DC12</b> Emergency circuit 12 volt (35W lamp included std.) <sup>6</sup>		<b>WSTVG</b> Vandal guard <sup>8</sup>			
	150S		TB <sup>3</sup>	<b>2DC12</b> Emergency circuit 12 volt (2, 35W lamps included) <sup>6</sup>		<b>Architectural colors</b> <sup>10</sup>			
			TBV <sup>4</sup>	<b>DC2012</b> Emergency circuit 12 volt (20W lamp included) <sup>6</sup>		<b>Standard textured colors</b>			
	<b>Metal halide</b>			<b>2DC2012</b> Emergency circuit 12 volt (2, 20W lamps included) <sup>6</sup>		<b>DBBT</b> Dark bronze (std.)			
	50M			<b>QRS</b> Quartz restrike system (100W max 120V, quartz lamp not included) <sup>7</sup>		<b>DSST</b> Sandstone			
	70M			<b>CR</b> Enhanced corrosion resistance		<b>DNAT</b> Natural aluminum			
	100M			<b>CRT</b> Non-stick protective coating (black only)		<b>DWHG</b> White			
	150M			<b>PE</b> Photoelectric cell-button type (n/a TB/TBV) <sup>8</sup>		<b>DBLB</b> Black			
	175M			<b>WLU</b> Wet location door for up orientation		<b>Optional textured colors</b>			
				<b>IBS</b> Internal backlight shield <sup>9</sup>		<b>DBNH</b> Bronze			
				<b>DFL</b> Diffusing lens		<b>DSPD</b> Dark gray			
				<b>LPI</b> Lamp included (std)		<b>DSPJ</b> Light gray			
				<b>L/LP</b> Less lamp		<b>DSPE</b> Green			
				<b>CSA</b> CSA Certified		<b>DSPG</b> Dark red			
						<b>DSPF</b> Rust			
						<b>DSPH</b> Red			
						<b>Striping</b>			
						<b>SDBB</b> Dark bronze			
						<b>SDWH</b> White			
						<b>SDBL</b> Black			
						<b>SDNA</b> Natural aluminum			
						<b>SDTG</b> Tennis green			
						<b>SDBR</b> Bright red			
						<b>SDBUA</b> Dark blue			
						<b>SDGYM</b> Gray			
						<b>SDYLB</b> Yellow			

**NOTES:**

- 120V only.
- Consult factory for availability in Canada.
- Optional multi-tap ballast (120, 208, 240, 277V; 120, 277, 347V in Canada).
- Optional penta-tap ballast (120, 208, 240, 277, 480V; not available in Canada). 175W metal halide only.
- Not available with QRS.
- Not available with SF, DF or QRS.
- Not available with EC.
- Must be ordered with fixture; cannot be field installed.
- Not available with medium throw (MD) distribution.
- Additional architectural colors available; see [www.lithonia.com](http://www.lithonia.com) for more information.

# 6" AH Lensed

## Distribution data

## Output data

## Coefficient of utilization

## Illuminance Data at 30" Above Floor for a Single Luminaire

AH 70M 6AR CGL, (1) MP70/C/U/MED lamp, 4800 rated lumens, 1.1 s/mh, test no. LTL8007

From 0°	cp.	Lumens	Zone	Lumens	%lamp	pf	Coefficient of utilization				Illuminance Data at 30" Above Floor for a Single Luminaire							
							pc	80%		20%		Mount height	Initial fc at beam center	50% beam angle 56.9°		10% beam angle 92.1°		
								50%	30%	50%	30%			Beam diameter	fc at beam edge	Beam diameter	fc at beam edge	
0°	2122	0	0°-30°	1523	31.7	1	67	65	66	64	63	62	8'	70.1	6.0'	35.1	11.4'	7.0
5°	2111	199	0°-40°	2267	47.2	2	61	59	60	58	58	56	10'	37.7	8.1'	18.9	15.6'	3.8
15°	1934	547	0°-60°	2925	60.9	3	56	53	55	52	54	51	12'	23.5	10.3'	11.8	19.7'	2.4
25°	1701	777	0°-90°	2928	61.0	4	52	48	51	47	50	47	14'	16.0	12.5'	8.0	23.8'	1.6
35°	1195	744	90°-180°	0	0.0	5	48	44	47	43	46	43	16'	11.6	14.6'	5.8	28.0'	1.2
45°	684	518	0°-180°	2928	61.0*	6	44	40	43	40	43	39						
55°	121	140				7	41	37	40	36	39	36						
65°	2	3				8	38	34	37	33	37	33						
75°	0	0				9	35	31	35	31	34	31						
85°	0	0				10	33	29	33	29	32	29						
90°	0	0																

AH 70MHC 6AR CGL, (1) MPC70/C/U/MED lamp, 5800 rated lumens, 1.3 s/mh, test no. LTL8009

From 0°	cp.	Lumens	Zone	Lumens	%lamp	pf	Coefficient of utilization				Illuminance Data at 30" Above Floor for a Single Luminaire							
							pc	80%		20%		Mount height	Initial fc at beam center	50% beam angle 63.8°		10% beam angle 96.5°		
								50%	30%	50%	30%			Beam diameter	fc at beam edge	Beam diameter	fc at beam edge	
0°	2121	0	0°-30°	1778	30.6	1	69	67	67	66	65	64	8'	70.1	6.8'	35.1	12.3'	7.0
5°	2194	213	0°-40°	2732	47.1	2	63	60	62	59	60	57	10'	37.7	9.3'	18.9	16.8'	3.8
15°	2219	627	0°-60°	3639	62.7	3	58	54	57	53	55	52	12'	23.5	11.8'	11.8	21.3'	2.4
25°	2057	937	0°-90°	3645	62.8	4	53	49	52	48	51	47	14'	16.0	14.3'	8.0	25.8'	1.6
35°	1536	955	90°-180°	0	0.0	5	48	44	48	44	47	43	16'	11.6	16.8'	5.8	30.3'	1.2
45°	922	700	0°-180°	3645	62.8*	6	45	40	44	40	43	39						
55°	188	207				7	41	37	41	36	40	36						
65°	4	5				8	38	34	38	33	37	33						
75°	1	1				9	35	31	35	31	34	31						
85°	1	0				10	33	29	33	29	32	28						
90°	0	0																

AH 100MHC 6AR CGL, (1) MPC100/C/U/MED lamp, 8700 rated lumens, 1.2 s/mh, test no. LTL8008

From 0°	cp.	Lumens	Zone	Lumens	%lamp	pf	Coefficient of utilization				Illuminance Data at 30" Above Floor for a Single Luminaire							
							pc	80%		20%		Mount height	Initial fc at beam center	50% beam angle 60.8°		10% beam angle 94.6°		
								50%	30%	50%	30%			Beam diameter	fc at beam edge	Beam diameter	fc at beam edge	
0°	3433	0	0°-30°	2674	30.7	1	68	66	66	65	64	62	8'	113.5	6.5'	56.7	11.9'	11.3
5°	3483	333	0°-40°	4065	46.7	2	62	59	61	58	59	57	10'	61.0	8.8'	30.5	16.3'	6.1
15°	3376	953	0°-60°	5355	61.5	3	57	53	56	52	54	51	12'	38.0	11.1'	19.0	20.6'	3.8
25°	3036	1388	0°-90°	5365	61.7	4	52	48	51	47	50	47	14'	26.0	13.5'	13.0	24.9'	2.6
35°	2241	1391	90°-180°	0	0.0	5	48	43	47	43	46	42	16'	18.8	15.8'	9.4	29.2'	1.9
45°	1307	995	0°-180°	5365	61.7*	6	44	40	43	39	42	39						
55°	274	295				7	41	36	40	36	39	36						
65°	6	8				8	38	33	37	33	36	33						
75°	2	2				9	35	31	35	31	34	30						
85°	0	0				10	33	28	32	28	32	28						
90°	0	0																

AH 70MHC 6MB CGL, (1) MPC70/C/U/MED lamp, 5800 rated lumens, 1.5 s/mh, test no. LTL8040

From 0°	cp.	Lumens	Zone	Lumens	%lamp	pf	Coefficient of utilization				Illuminance Data at 30" Above Floor for a Single Luminaire							
							pc	80%		20%		Mount height	Initial fc at beam center	50% beam angle 73.8°		10% beam angle 99.4°		
								50%	30%	50%	30%			Beam diameter	fc at beam edge	Beam diameter	fc at beam edge	
0°	1202	0	0°-30°	1329	22.9	1	54	53	53	52	51	50	8'	39.7	8.2'	19.9	12.9'	4.0
5°	1250	122	0°-40°	2128	36.7	2	50	47	49	46	47	45	10'	21.4	11.2'	10.7	17.7'	2.1
15°	1471	427	0°-60°	2867	49.4	3	45	42	44	42	43	41	12'	13.3	14.2'	6.7	22.4'	1.3
25°	1734	781	0°-90°	2888	49.8	4	41	38	41	37	39	37	14'	9.1	17.2'	4.5	27.1'	0.9
35°	1290	799	90°-180°	0	0.0	5	38	34	37	34	36	33	16'	6.6	20.2'	3.3	31.8'	0.7
45°	696	536	0°-180°	2888	49.8*	6	34	31	34	31	33	30						
55°	216	202				7	32	28	31	28	31	28						
65°	11	21				8	29	26	29	25	28	25						
75°	0	0				9	27	23	27	23	26	23						
85°	0	0				10	25	22	25	22	24	21						
90°	0	0																

AH 70MHC 6BC CGL, (1) MPC70/C/U/MED lamp, 5800 rated lumens, 1.5 s/mh, test no. LTL8041

From 0°	cp.	Lumens	Zone	Lumens	%lamp	pf	Coefficient of utilization				Illuminance Data at 30" Above Floor for a Single Luminaire							
							pc	80%		20%		Mount height	Initial fc at beam center	50% beam angle 73.7°		10% beam angle 99.4°		
								50%	30%	50%	30%			Beam diameter	fc at beam edge	Beam diameter	fc at beam edge	
0°	1218	0	0°-30°	1339	23.1	1	55	54	54	53	52	51	8'	40.3	8.2'	20.1	12.9'	4.0
5°	1269	123	0°-40°	2145	37.0	2	50	48	49	47	48	46	10'	21.7	11.2'	10.8	17.7'	2.2
15°	1478	429	0°-60°	2898	50.0	3	46	43	45	42	44	41	12'	13.5	14.2'	6.7	22.4'	1.3
25°	1748	787	0°-90°	2946	50.8	4	42	38	41	38	40	37	14'	9.2	17.2'	4.6	27.1'	0.9
35°	1301	806	90°-180°	0	0.0	5	38	35	38	34	37	34	16'	6.7	20.2'	3.3	31.8'	0.7
45°	702	541	0°-180°	2946	50.8*	6	35	31	35	31	34	31						
55°	224	212				7	32	28	32	28	31	28						
65°	30	40				8	30	26	29	26	29	25						
75°	8	8				9	27	24	27	24	27	23						
85°	0	0				10	25	22	25	22	25	22						
90°	0	0																

### NOTES:

- For electrical characteristics consult technical data tab.
- Tested to current IES and NEMA standards under stabilized laboratory conditions. Various operating factors can cause differences between laboratory data and actual field measurements. Dimensions and specifications are based on the most current available data and are subject to change without notice.

DHID-150

©2003 Gotham, Rev. 01/03  
DHID-150.p65

gotham

An Acuity Brands Company

GOTHAM ARCHITECTURAL DOWNLIGHTING  
A DIVISION OF ACUITY LIGHTING GROUP, INC.  
1400 Lester Road Conyers Georgia 30012  
P 800 315 4982 F 770 860 3129  
www.gothamlighting.com



# FEATURES

## OPTICAL

- Reflector – Self-flanged, specular clear or semi-diffuse reflector. Bounding Ray Optical Principle design provides lamp before lamp image and smooth transition from top of reflector to bottom. Minimum flange matches reflector finish. White painted flange optional.
- Baffle/cone – Specular clear upper reflector. Microgroove baffle with white painted flange or specular black cone with flange that matches cone finish.
- 1/8" tempered clear or prismatic glass lens.

## MECHANICAL

- 16-gauge galvanized steel mounting/plaster frame with friction support springs to retain optical system. Accommodates up to 7/8" thick ceiling standard. See Accessories for increased ceiling thickness capability.
- Mounting bars are 16-gauge galvanized steel with continuous 4" vertical adjustment, held in place with tool-less, cam-action locking system. Post installation adjustment possible without the use of tools from above or below the ceiling. Shipped pre-installed.
- Galvanized steel junction box with bottom-hinged access covers and spring latches. Two combination 1/2"-3/4" and four 1/2" knockouts for straight-through conduit runs. Capacity: 8 (4 in, 4 out) No. 12 AWG conductors rated for 90°C.

## ELECTRICAL SYSTEM

- Die-cast aluminum lampholder housing. Designed for effective heat dissipation and positive light center positioning.
- Medium-base porcelain socket with nickel-plated screw shell. Extended porcelain socket for "open fixture" rated metal halide lamps.
- Prewired, encased-and-potted, 120/277V or 120/347V ballast tray module. Module can be attached before or after mounting of mounting/plaster frame.
- Thermally-activated insulation detector.

## LISTING

- Fixtures are UL Listed for thru-branch wiring, recessed mounting and damp locations. Listed and labeled to comply with Canadian Standards (see Options).

## ENERGY

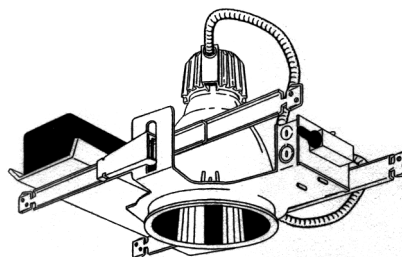
LER.DOL	Annual Energy Cost	Lamps	Lamp Lumens	Ballast Factor	Input Watts
35	\$6.90	(1) 100W MHC	8700	1.00	125

Type  
**X1**

Catalog number

**RECESSED CANOPY LIGHT**

**50 W Metal Halide Electronic Ballast**

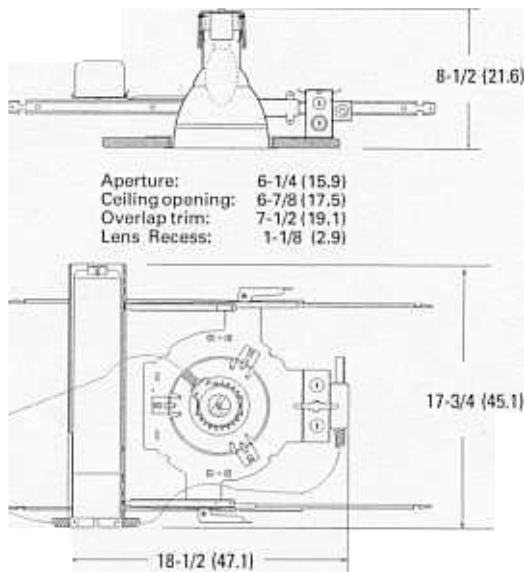


**HID Downlights**

**6" AH**

**Lensed**

**MH or HPS Lamp**



All dimensions are inches (centimeters).

## ORDERING INFORMATION

Choose the boldface catalog nomenclature that best suits your needs and write it on the appropriate line. Order accessories as separate catalog numbers (shipped separately).

Example: **AH 100M6BC CGL 120**

Series	Reflector Type	Finish	Lens Type <sup>3</sup>	Voltage	Options
<b>AH</b>	<b>6AR</b> Clear	<b>(blank)</b> Specular	<b>CGL</b> Safety Glass	<b>120</b>	<b>WLP</b> With lamp (shipped separately).
	<b>6PR</b> Pewter	low iridescent	<b>T73</b> Tempered	<b>277</b>	<b>TRW</b> White painted flange. (Standard with 6MB.)
	<b>6WTR</b> Wheat	<b>LD</b> Semi-diffuse	Prismatic	<b>347</b>	<b>LRC<sup>4</sup></b> Provides compatibility with Lithonia RelocSystem.
Metal Halide	<b>6UBR</b> Umber	low iridescent	Lens		<b>QRS<sup>5</sup></b> Quartz restrike system (uses maximum 100W DC base quartz lamp by others).
50M MP50/C/U/MED	<b>6CR</b> Champagne				<b>QRSTD<sup>6</sup></b> Quartz restrike system with time delay. Operates like QRS, except quartz lamp remains on for two minutes after HID lamp restrikes.
70M MP70/C/U/MED	Gold				<b>EC<sup>7</sup></b> Emergency circuit (DC socket with leads for connection to external emergency power source; maximum 100W lamp).
100M MP100/C/U/MED	<b>6GR</b> Gold				<b>SF</b> Single fuse.
Color Corrected Metal Halide <sup>1</sup>	<b>6MB<sup>2</sup></b> Black Baffle				<b>CSA</b> Listed and labeled to comply with Canadian Standards.
50MHC MPC50/C/MED	<b>6BC<sup>2</sup></b> Black Cone				<b>HEB</b> Electronic ballast.
70MHC MPC70/C/MED					
100MHC MPC100/C/MED					
High Pressure Sodium					
50S LU50/D/MED					
70S LU70/D/MED					
100S LU100/D/MED					
<b>Accessories</b>					
Order as separate catalog number.					
			<b>SC6</b> Sloped ceiling adaptor. Degree of slope must be specified (10D, 15D, 20D, 25D, 30D). Ex: SC6 10D.		
			<b>CTA6</b> Ceiling thickness adaptor (extends mounting frame to accommodate ceiling thickness up to 2").		

gotham<sup>®</sup>  
An Acuity Brands Company



GOTHAM ARCHITECTURAL DOWNLIGHTING  
A DIVISION OF ACUITY LIGHTING GROUP, INC.  
1400 Lester Road Conyers Georgia 30012  
P 800 315 4982 F 770 860 3129  
www.gothamlighting.com

AH6LENSED

DHID-150

## Architectural Arm-Mounted Full Cutoff

AREA LIGHTING

# AST

Suspend  
Aeris™

### Intended Use

For streets, walkways, parking lots and surrounding areas.

### Features

**Housing** – Die-cast single-piece aluminum with nominal 1/8" wall thickness. Integral arm provides easy installation to pole or wall. Housing completely sealed against moisture or environmental contaminants.

**Door Assembly** – Die-cast door frame, impact-resistant, tempered, glass lens, 3/16" thick, fully sealed with one-piece tubular silicone gasket. Tool-less entry and closure via spring-loaded die-cast latches.

**Optics** – Anodized segmented reflectors for superior uniformity and control. Reflectors attach with tool-less fasteners and are rotatable and interchangeable.

**Electrical** – 150W and below utilize a high reactance, high power factor. 175W and above use a constant-wattage autotransformer ballast. Com-

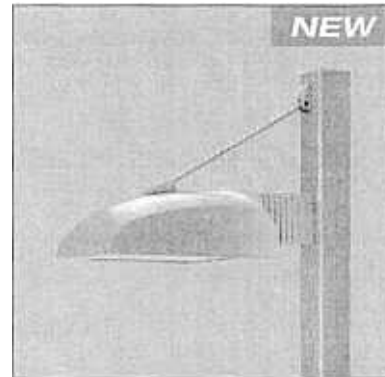
compact fluorescent uses an electronic high frequency ballast. Ballasts mounted on removable power tray with tool-less latch and have positive locking disconnect plugs. Ballasts are copper wound and 100% factory tested.

**Finish** – Standard finish is dark bronze (DDB) corrosion-resistant polyester powder finish. Other architectural colors available.

**Socket** – Porcelain, medium-base socket for AST1, mogul-base socket for AST2, with copper alloy nickel-plated screw shell and center contact. Fluorescent is four-pin positive latching thermoplastic. UL Listed.

### Listings

UL Listed (standard). CSA Certified or NOM Certified (see Options). UL Listed for wet locations in lens-down orientation (damp location listed in lens-up orientation). Meets IESNA full cutoff criteria. U.S. patent no. D447, 590. Canadian patent no. 94324.



Example: AST1 150S SR2 120 SPA SF LPI

### Ordering Information

Designation	Distribution	Voltage	Mounting <sup>11,12</sup>	Options/accessories
<b>High pressure sodium</b>			<b>Included</b>	<b>Installed</b>
AST1 35S <sup>1</sup>	SR2 Segmented Type II roadway	120	SPA Square pole mounting block	LPI Lamp included
AST1 50S <sup>2</sup>	SR3 Segmented Type III asymmetric	208 <sup>7</sup>	RPA Round pole mounting block	L/LP Less lamp
AST1 70S	SR4SC Segmented Type IV forward throw, sharp cutoff	240 <sup>7</sup>	WBA Wall bracket (up or down)	SF Single fuse, 120V, 277V, 347V (n/a TB and MVOLT) <sup>13</sup>
AST1 100S	SR4W Segmented Type IV wide, forward throw (size 2 only)	277		DF Double fuse, 208V, 240V, 480V (n/a TB and MVOLT) <sup>13</sup>
AST1 150S		347		PER NEMA twist-lock receptacle only (no photocontrol)
AST2 200S		480 <sup>7</sup>		QRS Quartz restrike system (100W max. AS1, 250W max. AS2, lamp not included) <sup>13</sup>
AST2 250S	SR5S Segmented Type V square	TB <sup>8</sup>		CR Enhanced corrosion resistance
AST2 400S		MVOLT <sup>9,10</sup>		HS House-side shield (n/a SR4SC or SR5S)
<b>Metal halide</b>			<b>Drilling patterns:</b>	EC Emergency circuit <sup>14</sup>
AST1 50M <sup>3</sup>			(see pole ordering, pg. 552)	TP Tamperproof
AST1 70M <sup>3</sup>			DM19AST1 1at90°	SCWA Super CWA pulse start ballast (n/a HPS, DTT, TRT, 50M, 70M or 100M)
AST1 100M			DM19AST2 1at90°	CSA CSA Certified
AST1 150M <sup>4</sup>			DM28AST1 2at180°	NOM NOM Certified <sup>14</sup>
AST1 175M			DM28AST2 2at180°	For optional architectural colors, see page 543.
AST2 200M <sup>5</sup>			DM29AST1 2at90°	<b>Shipped separately</b>
AST2 250M <sup>4</sup>			DM29AST2 2at90°	PE1 NEMA twist-lock PE (120V, 208V, 240V)
AST2 320M <sup>5</sup>			DM39AST1 3at90°	PE3 NEMA twist-lock PE (347V)
AST2 350M <sup>4</sup>			DM39AST2 3at90°	PE4 NEMA twist-lock PE (480V)
AST2 400M <sup>4</sup>			DM49AST1 4at90°	PE7 NEMA twist-lock PE (277V)
<b>Compact fluorescent</b>			DM49AST2 4at90°	SC Shorting cap
AST1 2/32TRT <sup>6</sup>			DM32AST1 3at120° (round poles only)	AS1VG Vandal guard
AST1 42TRT			DM32AST2 3at120° (round poles only)	AS2VG Vandal guard
AST1 2/42TRT <sup>6</sup>				
AST1 57TRT				
AST1 70TRT				

#### NOTES:

- 120V only.
- 120V and 277V only.
- Not available with 480V.
- May be ordered with SCWA.
- Must be ordered with SCWA.
- Available in SR3 only.
- Consult factory for availability in Canada.
- Optional multi-tap ballast (120V, 208V, 240V, 277V). In Canada 120V, 277V, 347V; ships as 120V/347V.
- Compact fluorescent only, 120V-277V.
- Multi-volt electronic ballast (for TRT and DTT lamps) capable of operating on any line voltage between 120V and 277V.
- Mounting block standard.
- AST1 mounts 9.64" lower than specified pole height. AST2 mounts 13.89" lower than specified height.
- SF, DF or QRS options cannot be ordered together.
- Consult factory for availability.

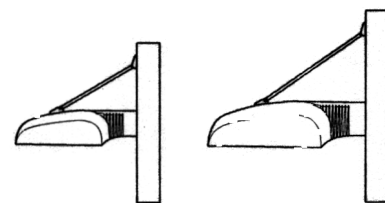


Consistent with LEED® goals & Green Globes™ criteria for light pollution reduction  
May not meet with HS option.

Dimensions are shown in inches (and millimeters) unless otherwise noted.

	AST1	AST2
IPA:	78"	128"
Length:	21.38(54.5)	28(71.0)
Width:	12.5(31.7)	16.25(41.9)
Height:	6.28(15.9)	8.25(21.0)
Weight:	22 lbs (10 kg)	45 lbs (20.4 kg)

www.lithonia.com, keyword: AST



LITHONIA LIGHTING

LITHONIA OUTDOOR

473

**Letter of Intent – Gilson Street Redevelopment  
Presented by BESHM Investment Group, LLC  
September 6, 2006 (Revised November 27, 2006)**

The proposed project will occupy that portion of the site as indicated on plans and as bounded by Gilson and Beld streets on the South side of Madison. The development will include the following uses.

10 two-bedroom rental units ranging in size from 1,039 sq. ft. to 1,302 sq. ft. and 3 one-bedroom units 846 sq. ft. to 990 sq. ft. located on both first and second floors. Each unit will have an outdoor balcony or patio. The apartment units will be detailed with high quality finishes and amenities and be targeted toward young professionals, singles, and senior citizens. All units are designed to meet ADA requirements and current codes.

1089 sq. ft. of workout room space on the first floor, available for use by rental tenants and retail tenants.

992 sq. ft. of meeting room space that will be made available to the tenants and public for gatherings, social functions and community meetings.

2,498 sq. ft. of commercial/retail space at the corner to be targeted toward a coffee shop/ bakery /sandwich shop.

2,990 sq. ft. of barber/beauty salon with a retail boutique offering hair care and related products. Several individual cubicles will be available for rental to self-employed hair stylists and manicurists. The salon will replace the existing barber shop that has been operating since 1960.

20 stalls of underground tenant parking and 7 stalls of covered parking to serve the retail space, accessed from the back alley.

2,400 sq. ft. of green space and lawns in a courtyard for outdoor use.

The building is designed to maintain the scale of the one and two-story homes and businesses in the existing neighborhood. Stylistically it will utilize traditional elements and incorporate metal awnings at the retail end of the building. It will be clad in brick, sculpted cast stone, composite board siding and touches of stucco. Several blank panels are provided for exterior signage at the commercial end. The corner is anchored by a distinguishing tower element.

Several existing buildings will be demolished as a requirement of the project. An existing 2-story house that is being used as a barber shop will be removed. It is currently in an advanced state of disrepair. An existing 2-story house (circa 1920's) that is being rented out, a free standing single stall garage and a concrete block storage shed will all be removed. The owner and his employees will salvage all usable materials prior to demolition.

This urban infill project is good for the neighborhood. It provides high-quality rental units, an expanded salon with more services and a neighborhood coffee shop in a location just a block off Park Street. The owner is a long established business in the neighborhood and is committed to the project for the long term.



## Letter of Transmittal

---

**Date** November 29, 2006

**To** Madison Urban Design Commission  
Room LL-100  
215 Martin Luther King Jr. Blvd.  
Madison, WI 53701

Attn: Al Martin

**Project Number** 0647

**Project** Multifamily and Commercial Building  
BESHM Investment Group, LLC

**Enclosures** Submittal for UDC meeting of 12/6/06

Attached are 14 sets of the following:

Updated drawings (14 sheets)  
Revised renderings (6 pictures)  
Revised Letter of Intent and Zoning Text  
Lighting Cut Sheets (5 sheets)

Also included are an application and a CD of all this material in PDF format.

Thank you,

Barry Lauffer  
Bouril Design Studio

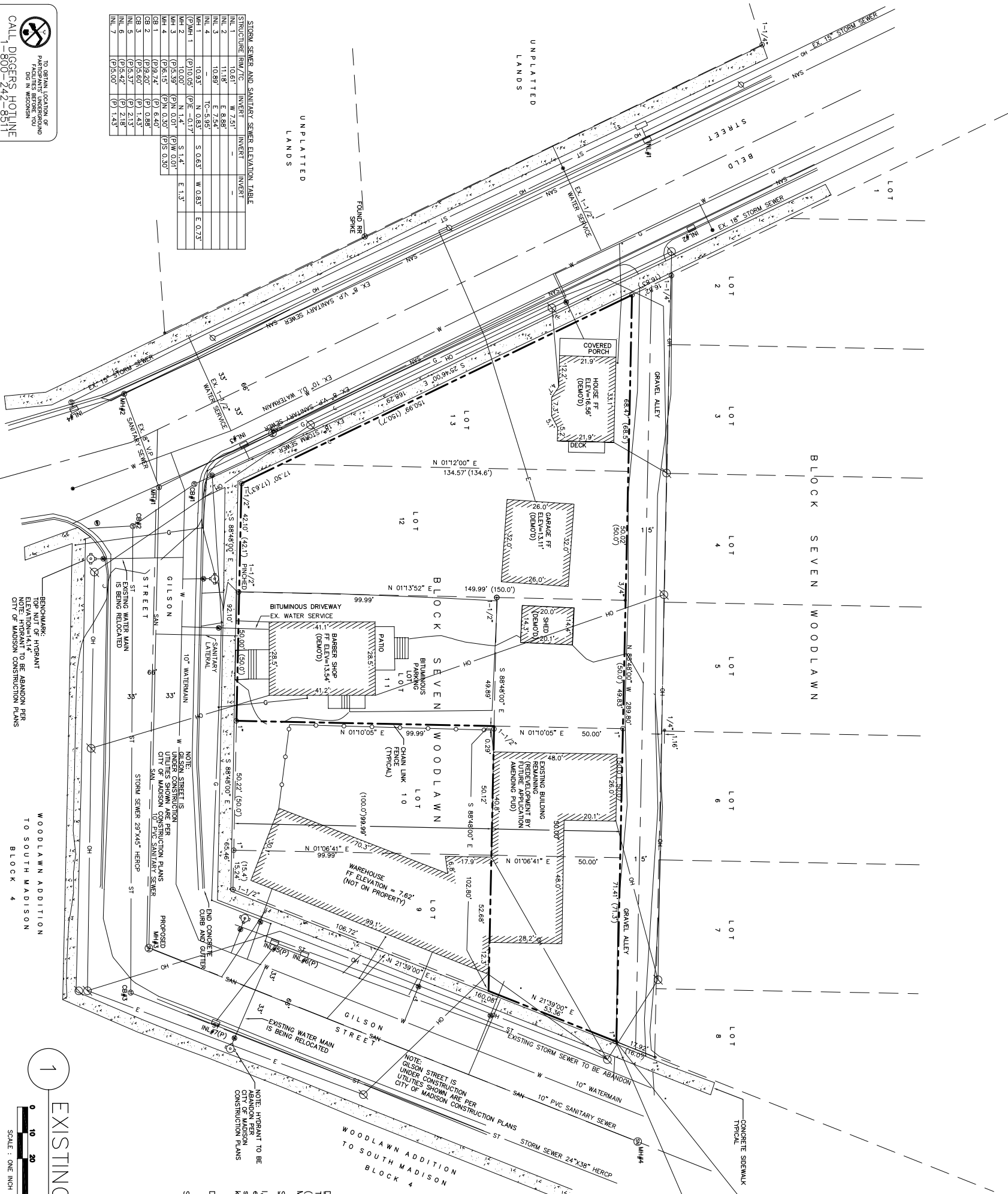
P.S. Also included are copies of last meeting's handouts.



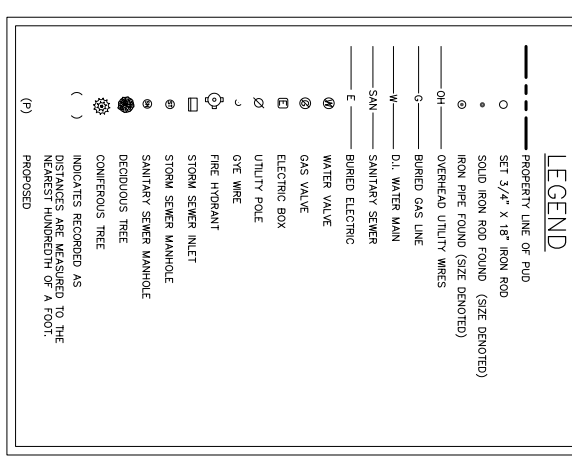


PART OF LOTS 9 AND 10 AND ALL OF LOTS 11, 12 AND 13, BLOCK SEVEN WOODLAWN, RECORDED IN VOLUME 2, PAGE 25, DOCUMENT NUMBER 237891A, DANE COUNTY REGISTRY, LOCATED IN THE SOUTHEAST QUARTER OF SECTION 26, TOWNSHIP 07 NORTH, RANGE 09 EAST, CITY OF MADISON, DANE COUNTY, WISCONSIN.

LEGAL DESCRIPTION:



- NOTES:**
- 1) Except as specifically stated or shown on this plan, this survey does not purport to reflect, any of the following which may be applicable to the subject real estate: easements, other than possible visible easements of the time of this survey, building setback lines, restrictive covenants, subdivision plat restrictions, or other restrictions, and any other facts that on occasion and current title search may disclose.
  - 2) No attempt has been made as a part of this boundary survey to obtain or show data concerning existence, size, depth, condition, capacity, or location of any utility or municipal/public service facility. For information regarding these utilities or facilities, please contact the appropriate agencies.
  - 3) Dates of field work: April 25 & 26, 2006
  - 4) Surveyor has made no investigation or independent search for easements of record, encroachments, or other facts that on occasion and current title search may disclose.
  - 5) All buildings, and surface and subsurface improvements on and adjacent to the site are not necessarily shown hereon.
  - 6) All trees, hedges and ground cover on the site may not necessarily be shown hereon.
  - 7) Area is approximately 25,137 square feet or 0.5771 acres.
  - 8) The plat of Block Seven Woodlawn (Document Number 237891A) is a report of Block 7 in the plat of Block Seven Woodlawn (Document Number 228781A). Lot numbers refer to the plat of Block Seven Woodlawn (Document Number 237891A).



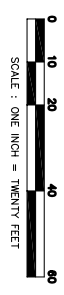
**DESCRIPTION FURNISHED:**  
The North 50 feet of Lots Nine (9) and Ten (10), and all of Lots Eleven (11), Twelve (12) and Thirteen (13), Block Seven (7), Woodlawn (also known as Woodlawn Addition to South Madison), in the City of Madison, Dane County, Wisconsin.

**SURVEYOR'S CERTIFICATE:**  
I, Michelle L. Burse, Registered Land Surveyor, No. 2020, hereby certify that the foregoing survey was executed under my direction and control, and that said survey meets the minimum standards for property surveys of the Wisconsin Administrative Code (A-67), and the map hereon is correct to the best of my knowledge and belief.

Dated this \_\_\_\_\_ day of \_\_\_\_\_, 200\_\_

Signed: \_\_\_\_\_  
Michelle L. Burse, R.L.S. No. 2020

**EXISTING SITE LAYOUT**



TO OBTAIN LOCATION OF PLAT FACILITIES SERVICE CALL DIS IN WISCONSIN  
**CALL DIGGERS HOTLINE**  
1-800-242-8511  
TOLL FREE

TOPGOR THE HEAVING IMPROVEMENTS(800)242-2288  
MS. STATUTE 19.27(1), (19.27)  
NOTICE TO CONTRACTORS  
NOTICE TO CONTRACTORS

Map Date: June 9, 2006  
Project Name: Woodlawn Addition  
Project No: 0647

**ASSUMED NORTH**  
BEARINGS ARE BASED UPON THE EAST LINE OF LOT 9, BLOCK 7 ASSUMED TO BEAR N 21°10'39" E

**CONCEPT DESIGN**  
NOT FOR CONSTRUCTION

**Bouril Design Studio, LLC**  
6602 Grand Teton Plaza, #150, Madison, WI 53719-1091  
Phone: (608) 833-3400 Fax: (608) 833-3408  
E-mail: bouril@bourilstudio.com

**GILSON STREET DEVELOPMENT**  
BIGHM INVESTMENT GROUP, LLC  
1610 GILSON STREET  
MADISON, WISCONSIN, 53715

**Burse**  
Surveying & engineering  
1400 E. Washington Ave, Suite 156  
Madison, WI 53703 608.250.9263  
Fax: 608.250.9266  
email: burse@cliburse.net  
www.burseurveying.com

**REVISIONS**

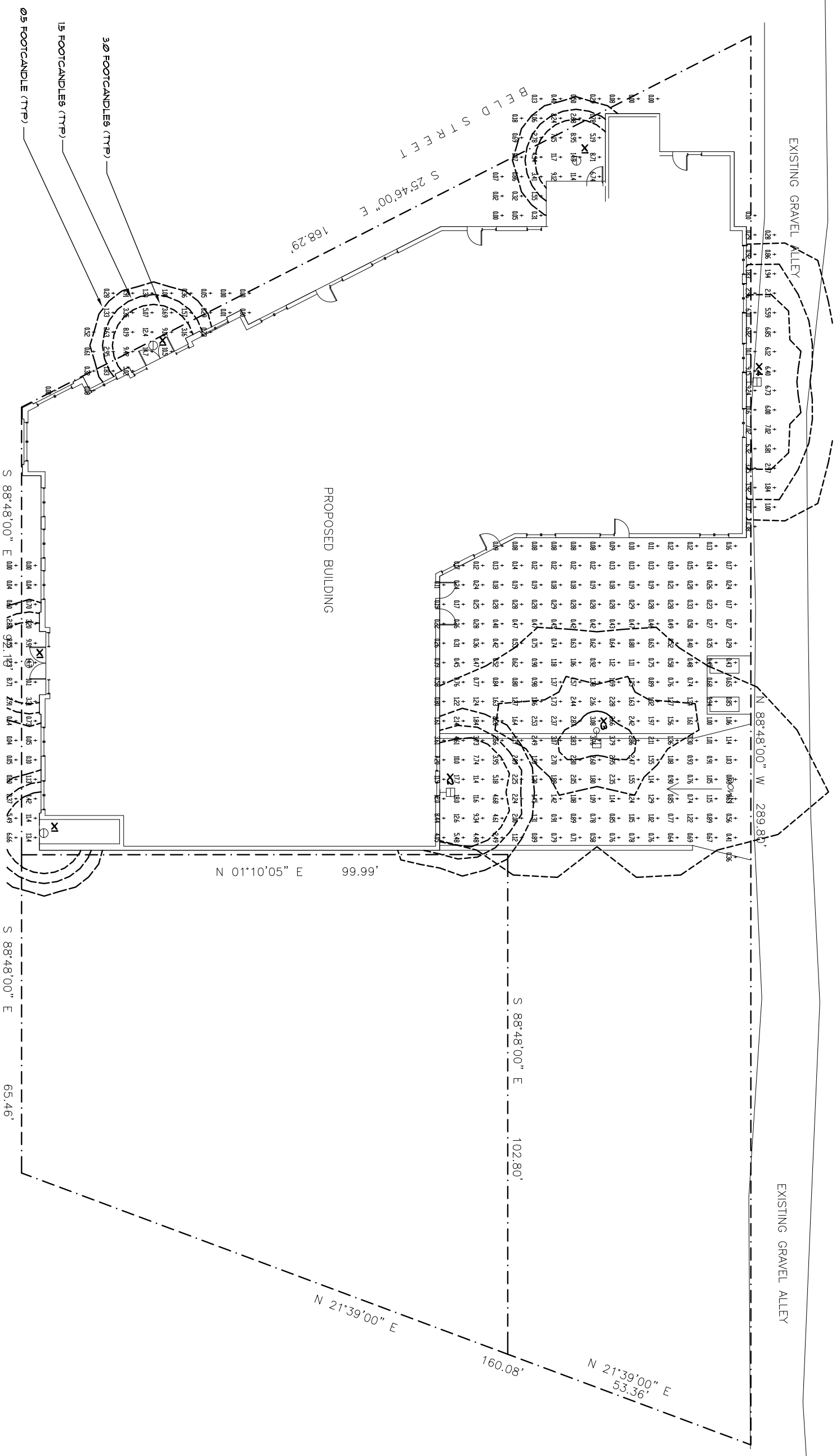
DATE	ISSUE
NOVEMBER 27, 2006	DRAIN BY LBL
PROJECT NO 0647	

**DATE** NOVEMBER 27, 2006  
**DRAIN BY** LBL  
**SW**

THE DESIGN REPRESENTED BY THESE DRAWINGS IS THE PROPERTY OF BOURIL DESIGN STUDIO, LLC. THESE DRAWINGS, WHETHER PRINTED OR ELECTRONIC FORMAT, MAY NOT BE COPIED OR REPRODUCED IN ANY FORM WITHOUT THE WRITTEN CONSENT OF BOURIL DESIGN STUDIO, LLC OF MADISON, WISCONSIN.







BORAIL GILSON ST (46) LUMINAIRE SCHEDULE	LAMP	LUMENS	MOUNTING/BALLAST	LLF	QTY
X1 ⊖ GILSON ST RECESS CAN (1) 7" 50W PAR CAN	(1) HP50/C/V/MED	3500	MTD IN SOFFIT	0.90	4
X2 -HD LITHONIA LIGHT VST 100W ND (1) 7" 100W ND	(1) HP100/C/V/MED	7900	WALL-MTD @ 10'	0.90	1
X3 -HD LITHONIA LIGHT AST 100W SR2 (1) 7" AST 100W SR2	(1) MKR100/V/MED	9000	15' POLE 2' CONC. BASE	0.90	1
X4 -HD LITHONIA LIGHT VST 100W V1 (1) 7" 100W V1	(1) HP100/C/V/MED	8500	WALL-MTD @ 10'	0.90	1

DWG file created by LitePro 2013 on 10/11/2006 10:39:17 AM

CALCULATION SUMMARY		DIMENSIONS		GROUP		AVE		MAX		MIN		MAX/MIN		AVE/MIN	
AREA NAME	GRID / TYPE	# PTS	SPAC	GROUP	AVE	MAX	MIN	MAX/MIN	AVE/MIN						
Area 1	ROADWAY / H+H	382	400	(+)	23	180	00	N/A	N/A						

# SITE LIGHTING ILLUMINATION PLAN - ROADWAY

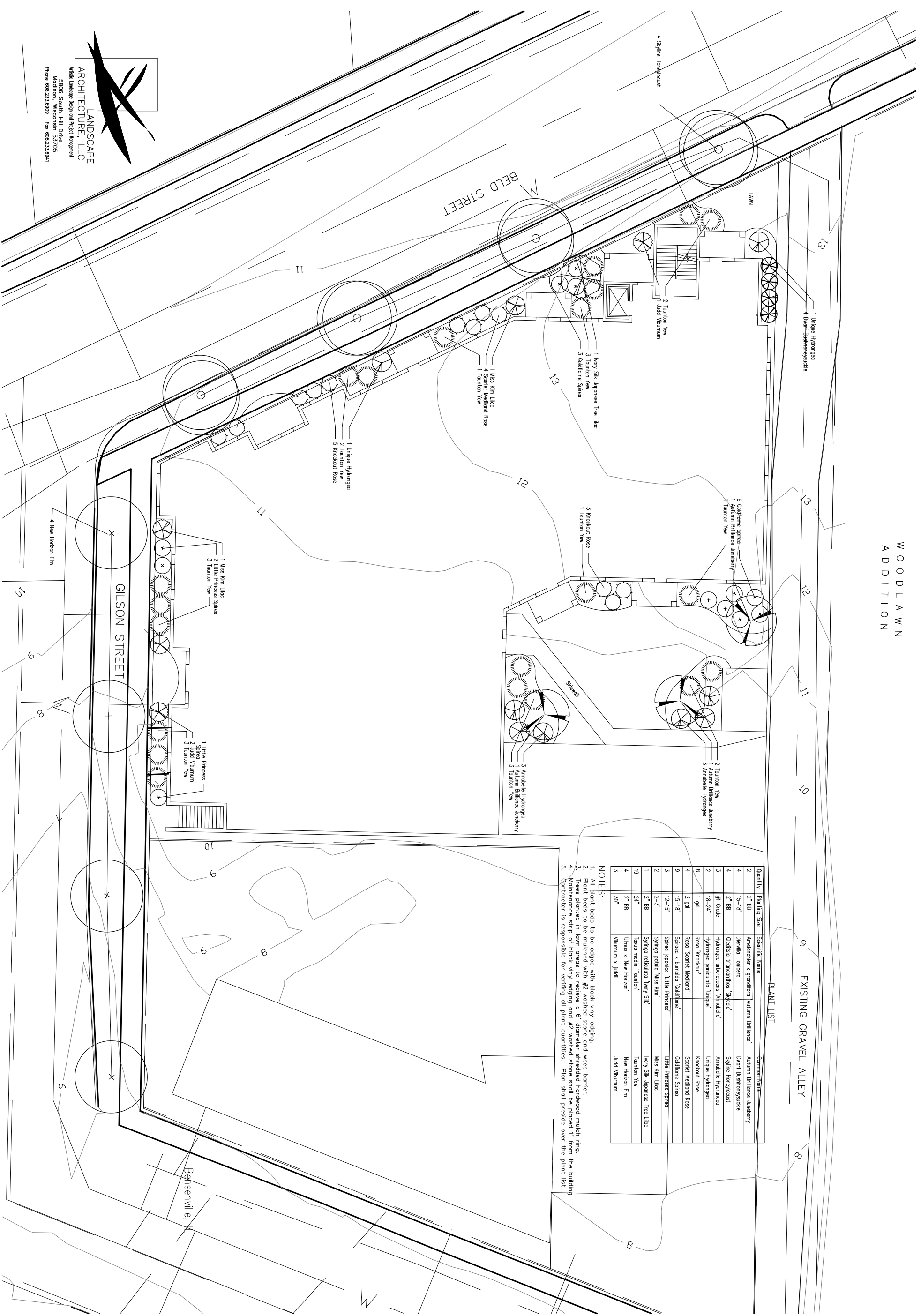
1" = 10' - 0"



<b>PROJECT NO</b> 0647	<b>DATE</b> 10-11-07	<b>DESIGN BY</b> DAS	<b>REVIEWED BY</b> MH	<b>PROJECT NO</b> 0647	<b>GILSON STREET DEVELOPMENT</b> BESHM INVESTMENT GROUP, LLC 1610 GILSON STREET MADISON, WISCONSIN, 53715	Bouril Design Studio, LLC 6602 Grand Teton Plaza, #150, Madison, WI 53719-1091 Phone: (608) 833-3400 Fax: (608) 833-3408 E-mail: bouril@bourildesign.com	<b>CONSULTING ENGINEERS:</b> <b>HEIN Engineering Group</b> 514 W. BELTLINE HWY, SUITE III MADISON, WI 53715 Phone: (608) 288-4260 Fax: (608) 288-4282 E-MAIL: hein@heingr.com	THE DESIGN REPRESENTED BY THESE DRAWINGS IS THE PROPERTY OF BOURIL DESIGN STUDIO, LLC. THESE DRAWINGS, WHETHER PRINTED OR IN ELECTRONIC FORMAT, MAY NOT BE COPIED OR REPRODUCED IN ANY FORM WITHOUT THE WRITTEN CONSENT OF BOURIL DESIGN STUDIO, LLC OF MADISON, WISCONSIN.
---------------------------	-------------------------	-------------------------	--------------------------	---------------------------	--	---	--	---

SL  
1

WOODLAWN  
ADDITION



PLANT LIST

Quantity	Planting Size	Scientific Name	Common Name
2	2'-BB	Aronia x grandiflora	Autumn Brilliance <sup>®</sup>
4	15'-18"	Quercus imbricaria	Dwarf Bushhoneycreeper
4	2'-BB	Quercus bicolor	Sylphie Honeycreeper
3	#1 Grade	Hydrangea arborescens	Annabelle Hydrangea
2	18"-24"	Hydrangea paniculata	Unique Hydrangea
8	1 gal	Rosa 'Knockout'	Knockout Rose
4	2 gal	Rosa 'Scarlet Meiland'	Scarlet Meiland Rose
9	15'-18"	Spiraea x bumalda	Goddame Spiraea
3	12'-15"	Spiraea japonica	Little Princess <sup>®</sup> Spiraea
2	2'-3"	Syringa pedata	Miss Kim Lilac
1	2'-BB	Syringa reticulata	Honey Silk Japanese Tree Lilac
19	24"	Taxus media	Taunton Yew
4	2'-BB	Ulmus x 'New Horizon'	New Horizon Elm
3	30"	Viburnum x juddii	Judd Viburnum

- NOTES:
- All plant beds to be edged with black vinyl edging.
  - Plant beds to be mulched with #2 washed stone and weed barrier.
  - Trees planted in lawn areas to receive a 6' diameter shredded hardwood mulch ring.
  - Plant reference strips on rock, vinyl edging and #2 washed stone shall be placed 1' from the building.
  - Contractor is responsible for verifying all plant quantities. Plan shall prevail over the plant list.



LANDSCAPE  
ARCHITECTURE, LLC  
Artistic Landscape Design and Project Management  
5806 South Hill Drive  
Madison, Wisconsin 53705  
Phone 608.233.6899 Fax 608.233.6941

THE DESIGN REPRESENTED BY THESE DRAWINGS IS THE PROPERTY OF BOURIL DESIGN STUDIO, LLC. THESE DRAWINGS, WHETHER PRINTED OR IN ELECTRONIC FORMAT, MAY NOT BE COPIED OR REPRODUCED IN ANY FORM WITHOUT THE WRITTEN CONSENT OF BOURIL DESIGN STUDIO, LLC OF MADISON, WISCONSIN.

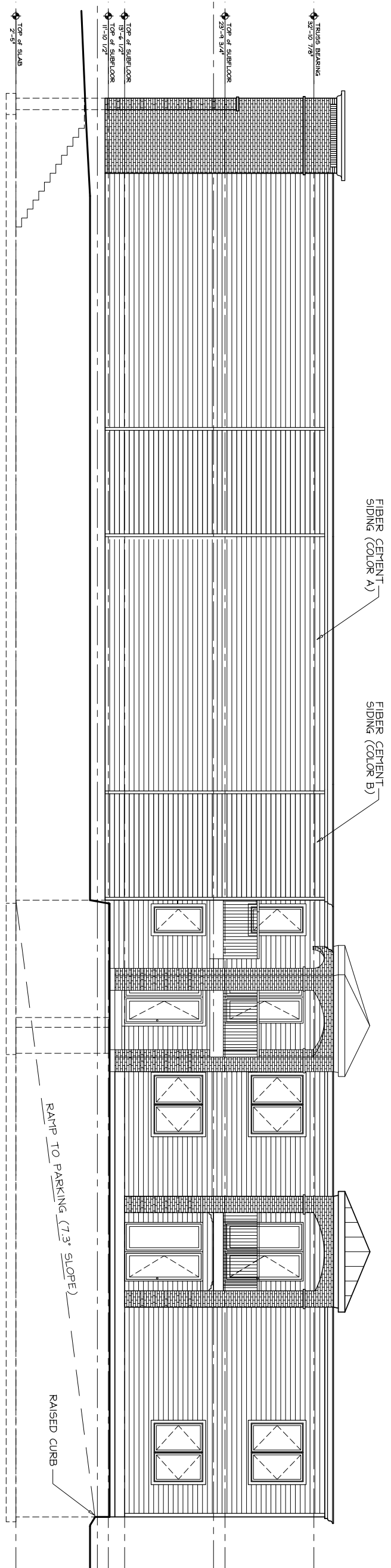
CONCEPT  
DESIGN  
NOT FOR CONSTRUCTION

**Bouril Design Studio, LLC**  
architects  
6602 Grand Teton Plaza, #150, Madison, WI 53719-1091  
Phone: (608) 833-3400 Fax: (608) 833-3406  
E-mail: bouril@bourilstudio.com

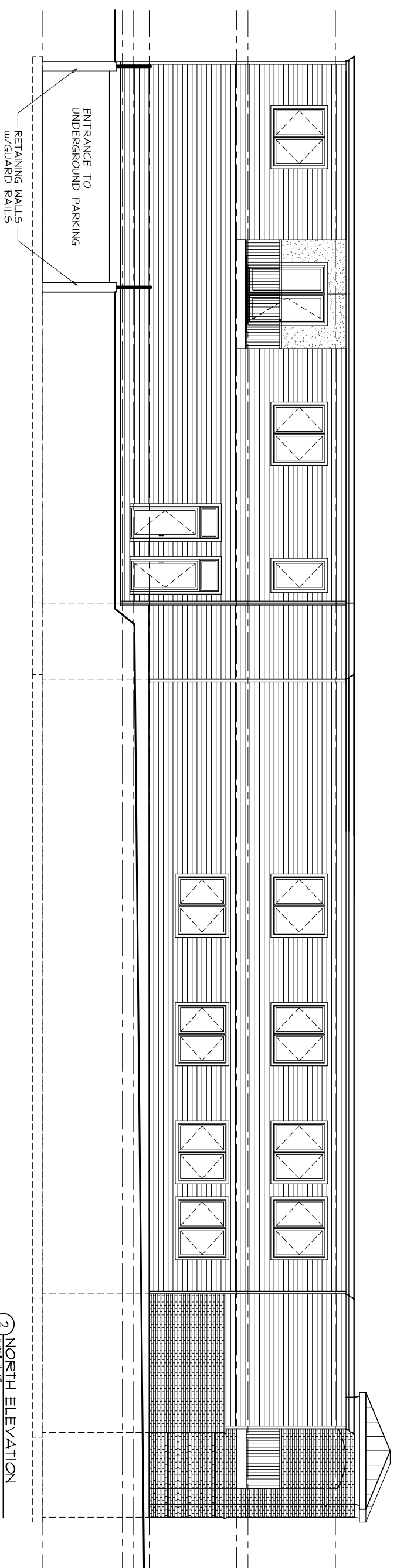
GILSON STREET DEVELOPMENT  
BESHM INVESTMENT GROUP, LLC  
1610 GILSON STREET  
MADISON, WISCONSIN, 53715

REVISIONS	DATE	ISSUE

PROJECT NO: 0647  
DATE: NOVEMBER 27, 2006  
DESIGN BY: LBL  
LS  
1



1 EAST ELEVATION  
3/16"=1'-0"



2 NORTH ELEVATION  
3/16"=1'-0"

THE DESIGN REPRESENTED BY THESE DRAWINGS IS THE PROPERTY OF BOURIL DESIGN STUDIO, LLC. THESE DRAWINGS, WHETHER PRINTED OR IN ELECTRONIC FORMAT, MAY NOT BE COPIED OR REPRODUCED IN ANY FORM WITHOUT THE WRITTEN CONSENT OF BOURIL DESIGN STUDIO, LLC OF MADISON, WISCONSIN.

**CONCEPT DESIGN**  
NOT FOR CONSTRUCTION

**Bouril Design Studio, LLC**  
architects  
8602 Grand Teton Plaza, #150, Madison, WI 53719-1091  
Phone: (608) 833-3400 Fax: (608) 833-3408  
E-mail: bouril@bourilstudio.com

GILSON STREET DEVELOPMENT  
BESHM INVESTMENT GROUP, LLC  
1610 GILSON STREET  
MADISON, WISCONSIN, 53715

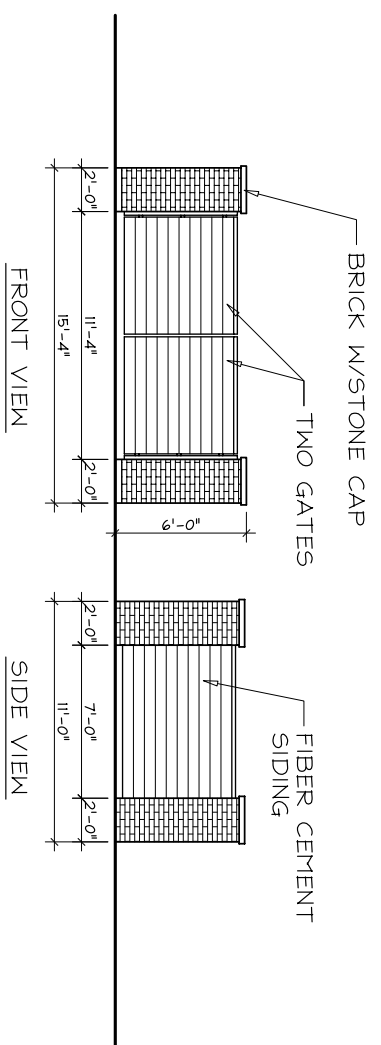
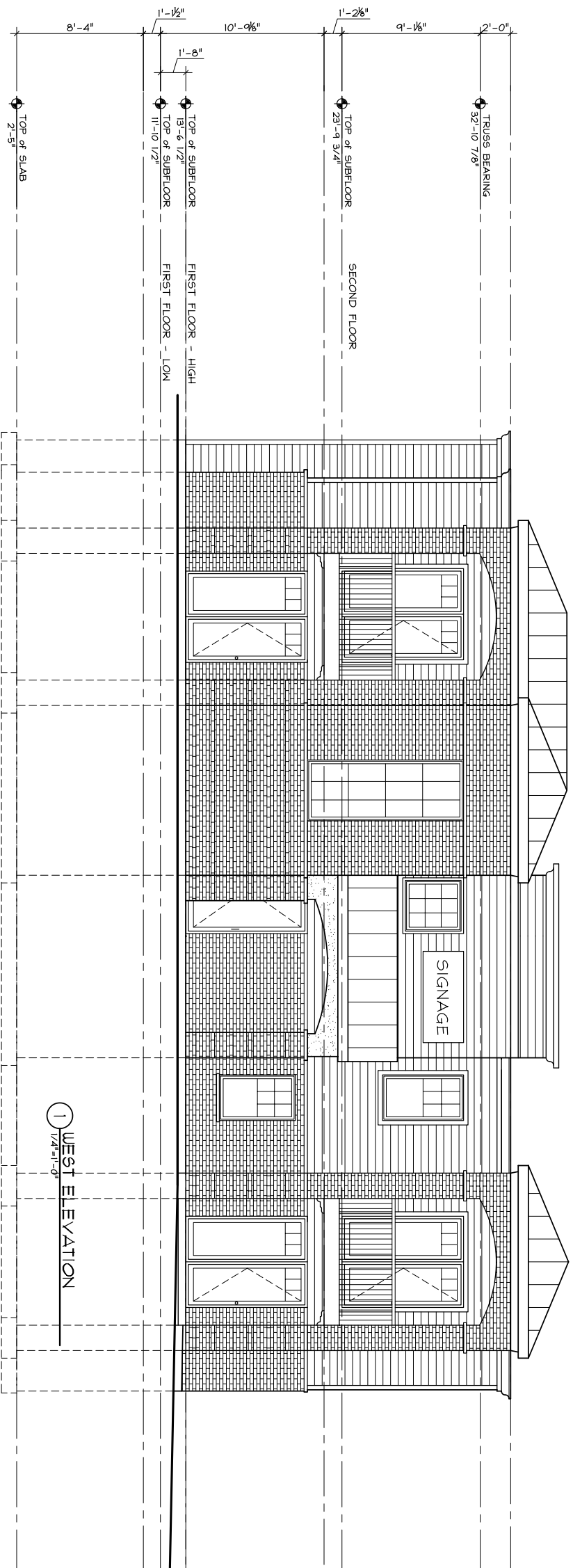
REVISIONS	DATE	ISSUE

PROJECT NO.  
06477

DATE  
NOVEMBER 27, 2006

DRAWN BY  
LBI

A  
6



2 TRASH ENCLOSURE  
1/4"=1'-0"

THE DESIGN REPRESENTED BY THESE DRAWINGS IS THE PROPERTY OF BOURIL DESIGN STUDIO, LLC. THESE DRAWINGS, WHETHER PRINTED OR IN ELECTRONIC FORMAT, MAY NOT BE COPIED OR REPRODUCED IN ANY FORM WITHOUT THE WRITTEN CONSENT OF BOURIL DESIGN STUDIO, LLC OF MADISON, WISCONSIN.

**CONCEPT DESIGN**  
NOT FOR CONSTRUCTION

**Bouril Design Studio, LLC**  
architects

8602 Grand Teton Plaza, #150, Madison, WI 53719-1091  
Phone: (608) 833-3400 Fax: (608) 833-3408  
E-mail: bouril@bourilstudio.com

GILSON STREET DEVELOPMENT  
BESHM INVESTMENT GROUP, LLC  
1610 GILSON STREET  
MADISON, WISCONSIN, 53715

REVISIONS	DATE	ISSUE
A		

PROJECT NO.  
06477

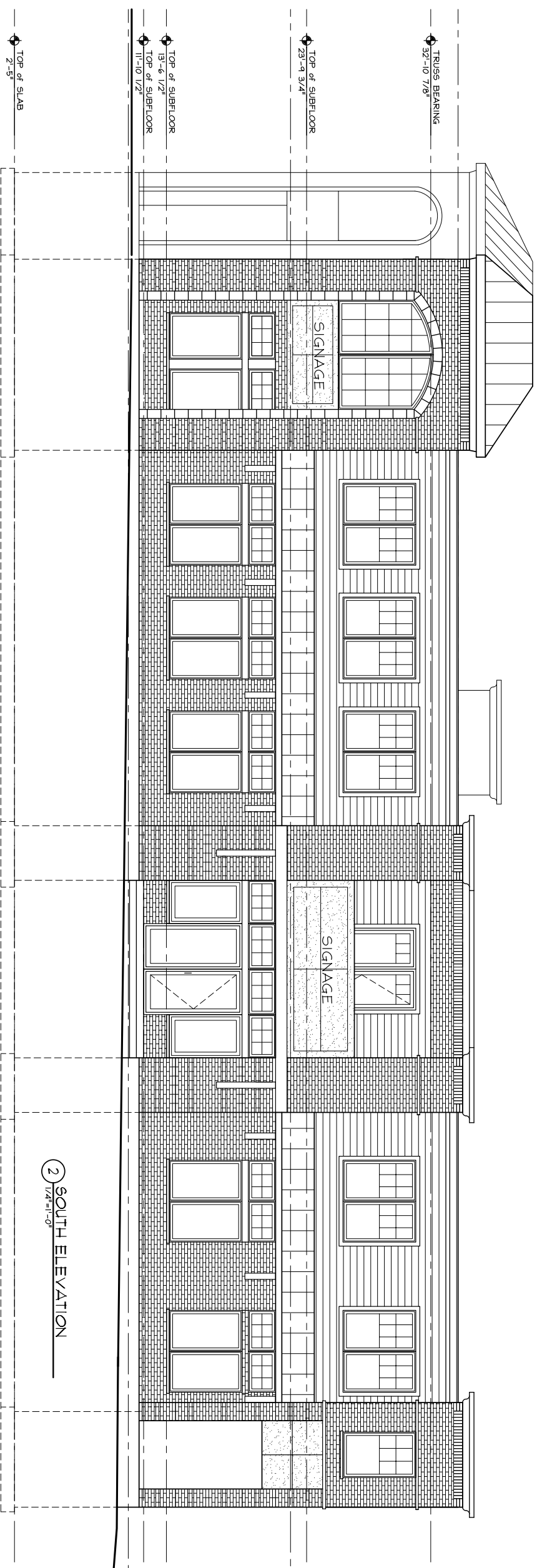
DATE  
NOVEMBER 27, 2006

DRAWN BY  
LBI

A  
5



11 SOUTHWEST ELEVATION  
1/4"=1'-0"



2 SOUTH ELEVATION  
1/4"=1'-0"

THE DESIGN REPRESENTED BY THESE DRAWINGS IS THE PROPERTY OF BOURIL DESIGN STUDIO, LLC. THESE DRAWINGS, WHETHER PRINTED OR IN ELECTRONIC FORMAT, MAY NOT BE COPIED OR REPRODUCED IN ANY FORM WITHOUT THE WRITTEN CONSENT OF BOURIL DESIGN STUDIO, LLC OF MADISON, WISCONSIN.

CONCEPT  
DESIGN  
NOT FOR CONSTRUCTION



GILSON STREET DEVELOPMENT  
BESHM INVESTMENT GROUP, LLC  
1610 GILSON STREET  
MADISON, WISCONSIN, 53715

REVISIONS	DATE	ISSUE

PROJECT NO.  
0647

DATE  
NOVEMBER 27, 2006

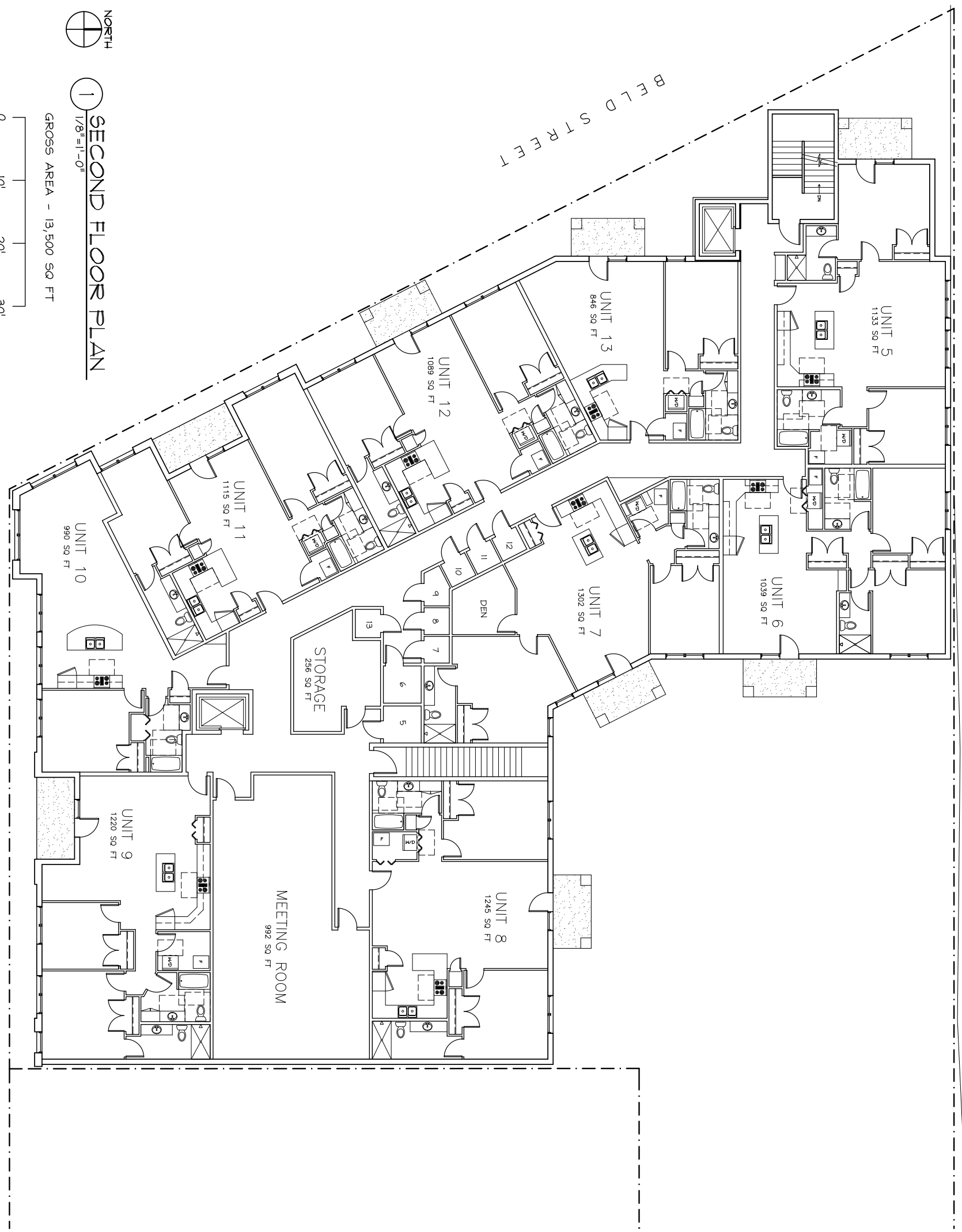
DRAWN BY  
LBI

A  
4

EXISTING GRAVEL ALLEY

BELD STREET

GILSON STREET



NORTH

1 SECOND FLOOR PLAN  
1/8" = 1'-0"

GROSS AREA - 13,500 SQ. FT.



THE DESIGN REPRESENTED BY THESE DRAWINGS IS THE PROPERTY OF BOURIL DESIGN STUDIO, LLC. THESE DRAWINGS, WHETHER PRINTED OR IN ELECTRONIC FORMAT, MAY NOT BE COPIED OR REPRODUCED IN ANY FORM WITHOUT THE WRITTEN CONSENT OF BOURIL DESIGN STUDIO, LLC OF MADISON, WISCONSIN.

**CONCEPT DESIGN**  
NOT FOR CONSTRUCTION

**Bouril Design Studio, LLC**  
architects  
8602 Grand Teton Plaza, #150, Madison, WI 53719-1091  
Phone: (608) 833-3400 Fax: (608) 833-3406  
E-mail: bouril@bourilstudio.com

GILSON STREET DEVELOPMENT  
BESHM INVESTMENT GROUP, LLC  
1610 GILSON STREET  
MADISON, WISCONSIN, 53715

REVISIONS	DATE	ISSUE

PROJECT NO.  
0647

DATE  
NOVEMBER 27, 2006

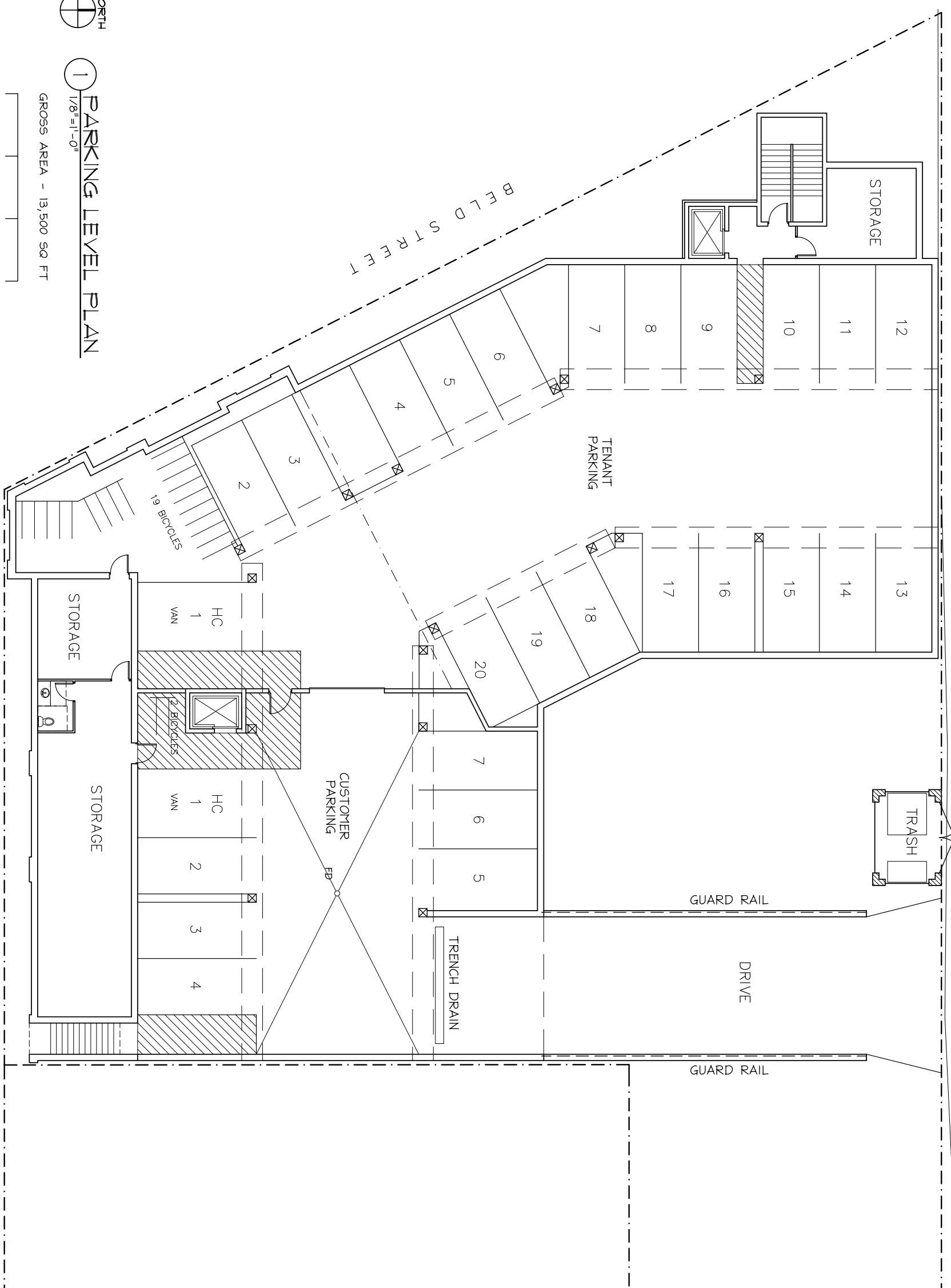
DRAWN BY  
LBI

A

3



EXISTING GRAVEL ALLEY



**1** PARKING LEVEL PLAN  
1/8" = 1'-0"

GROSS AREA - 13,500 SQ FT



GILSON STREET

THE DESIGN REPRESENTED BY THESE DRAWINGS IS THE PROPERTY OF BOURIL DESIGN STUDIO, LLC. THESE DRAWINGS, WHETHER PRINTED OR IN ELECTRONIC FORMAT, MAY NOT BE COPIED OR REPRODUCED IN ANY FORM WITHOUT THE WRITTEN CONSENT OF BOURIL DESIGN STUDIO, LLC OF MADISON, WISCONSIN.

**CONCEPT DESIGN**  
NOT FOR CONSTRUCTION

**Bouril Design Studio, LLC**  
architects  
8602 Grand Teton Plaza, #150, Madison, WI 53719-1091  
Phone: (608) 833-3400 Fax: (608) 833-3408  
E-mail: bouril@bourilstudio.com

GILSON STREET DEVELOPMENT  
BESHM INVESTMENT GROUP, LLC  
1610 GILSON STREET  
MADISON, WISCONSIN, 53715

REVISIONS	DATE	ISSUE

PROJECT NO.  
06477

DATE  
NOVEMBER 27, 2006

DRAWN BY  
LAB

**A**  
**1**





# Gilson Street Urban Development

Beshm Investment Group, LLC  
Madison, WI 11.27.2006



View Down North Beld Street



# Gilson Street Urban Development

Beshm Investment Group, LLC  
Madison, WI 11.27.2006



View Across Beld Street



# Gilson Street Urban Development

Beshm Investment Group, LLC  
Madison, WI 11.27.2006



Southeast - Down Beld Street



# Gilson Street Urban Development

Beshm Investment Group, LLC  
Madison, WI 11.27.2006



Corner View of Beld and Gilson Streets



# Gilson Street Urban Development

Beshm Investment Group, LLC  
Madison, WI 11.27.2006



View Down East Gilson Street



# Gilson Street Urban Development

Beshm Investment Group, LLC  
Madison, WI 11.27.2006



Corner View of Beld and Gilson Streets

**Zoning Text – Gilson Street Redevelopment  
Presented by BESHM Investment Group, LLC  
September 6, 2006 (Revised November 27, 2006)**

**A Statement of Purpose**

The zoning district is established to allow for the construction of a mixed use development of medium density rental units and residential neighborhood-friendly commercial retail space.

**B Permitted Uses**

Permitted uses in the zoning district shall be:

- three (3) one-bedroom rental units and ten (10) two-bedroom rental units
- barber/beauty salon and retail hair products boutique
- workout room/health club facility
- meeting room
- small scale commercial/retail establishments offering coffee, breads, sandwiches, bakery or similar such establishments

**C Lot Area**

25,137 sq. ft.

**D Floor Area Ratio**

Shall not exceed 1.61 for newly constructed building

**E Yard Requirements**

As shown on approved plans.

**F Landscaping**

As shown on approved plans.

**G Accessory Off-street Parking and Loading**

As shown on approved plans.

**H Lighting**

As shown on approved plans.

**I Signage**

As compared to the C-1 district, approved by Urban Design and Zoning.

**J Family Definition**

The family definition of the Madison General Ordinances per the R-1 district.

**K Alterations and Revisions**

No alteration or revision of this planned unit development shall be permitted unless approved by the City Plan Commission, however, the Zoning Administrator may issue permits for minor alterations or additions which are approved by the Director of Planning and Development and the alderperson of the district and are compatible with the concept approved by the Plan Commission.