

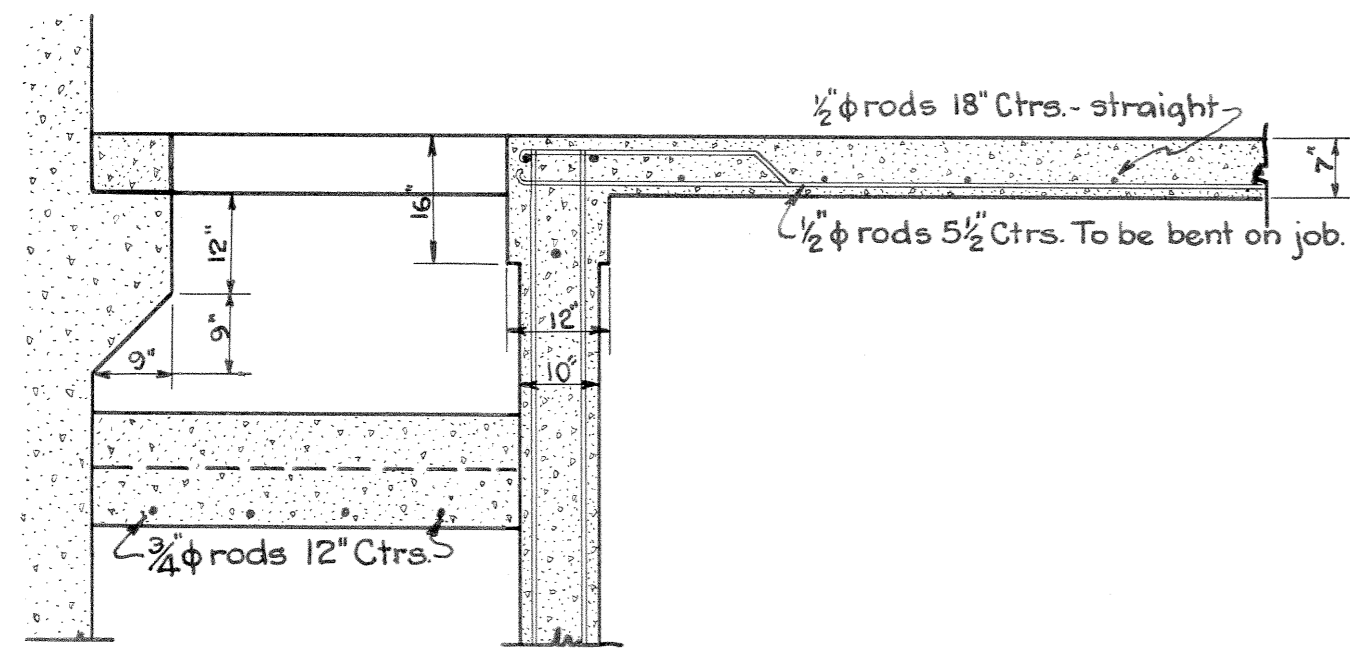
Roof
 3" Dry 1:2:3 1/2 Conc. roof supported by
 Steeltex or equal expanded metal.
 Stringers 25' span, 24" centers Truscor,
 Havenmeyer or equal, 105 lb. load.
 Northwest, ingot, rib lath, 3 1/2 lb. or equal.
 Plaster, putty coat finish.
 Four ply composition roof.

2-4'x4'x 5/8 Angles 12'-0" long
 2-5'x9' Doors Kalemeis or equal
 4-12'x18" Window Panes in each door

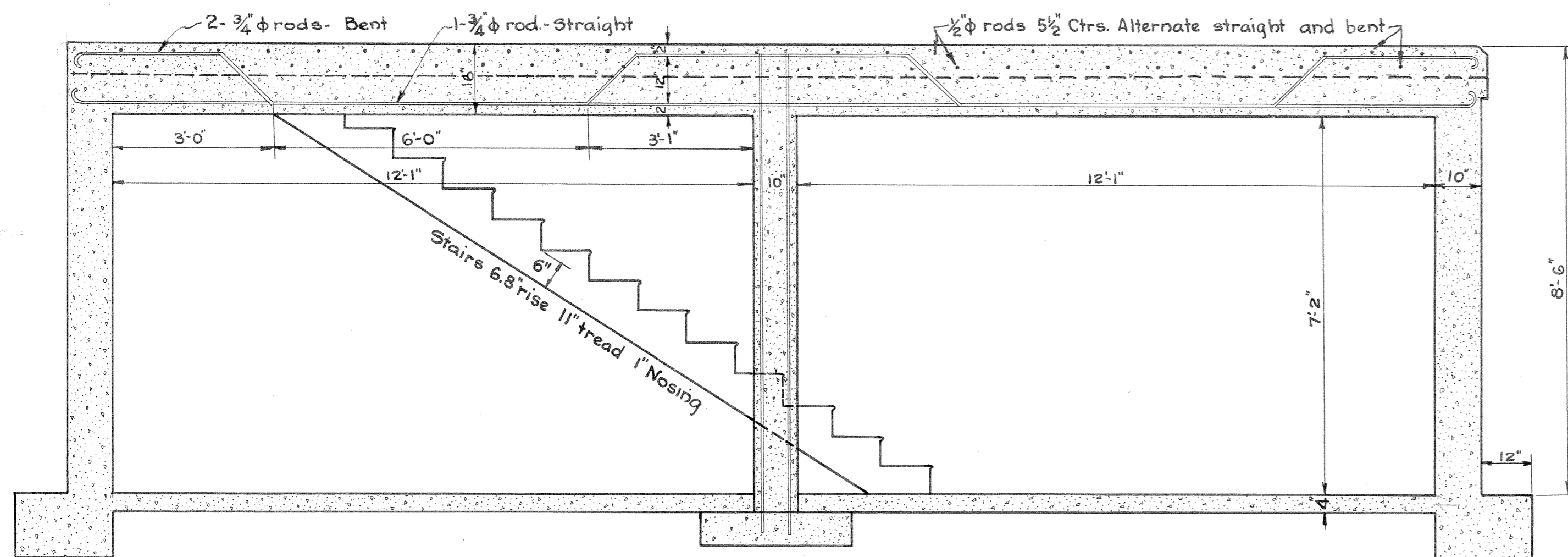
FRONT ELEVATION

Scale 1/2"=1'

NOTE: Place 2-4'x4'x 5/8 Angles over this door and all windows.
 Build about 40 ft. of Madison Standard Sidewalk 6' wide
 from this building to the walk on First St.

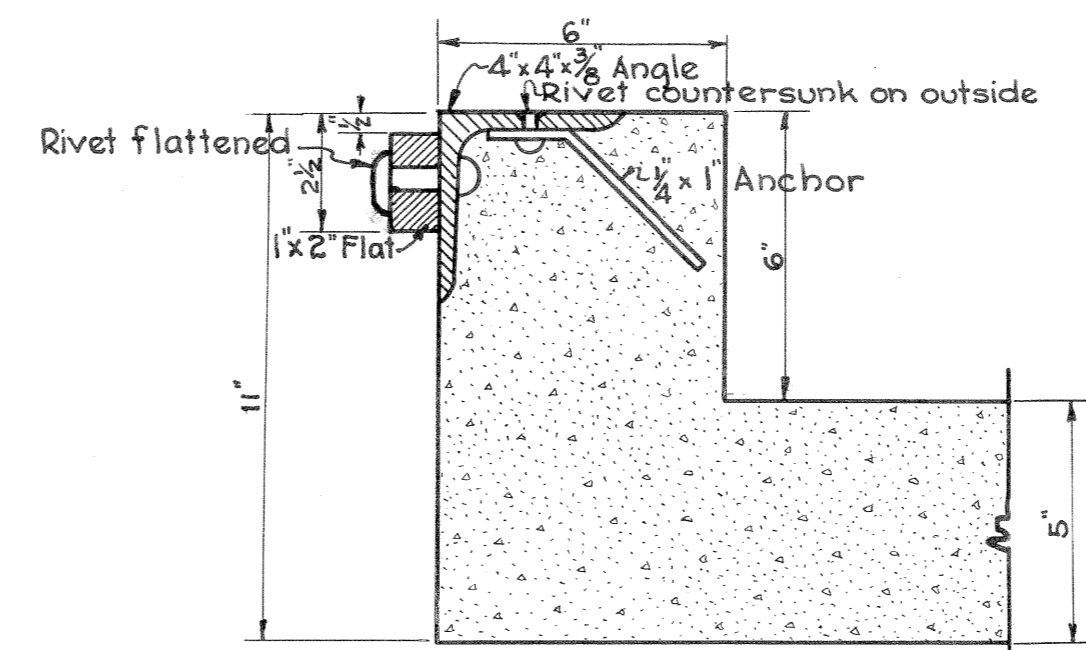


**SECTION OF FLOOR
 AT STAIRWAY**



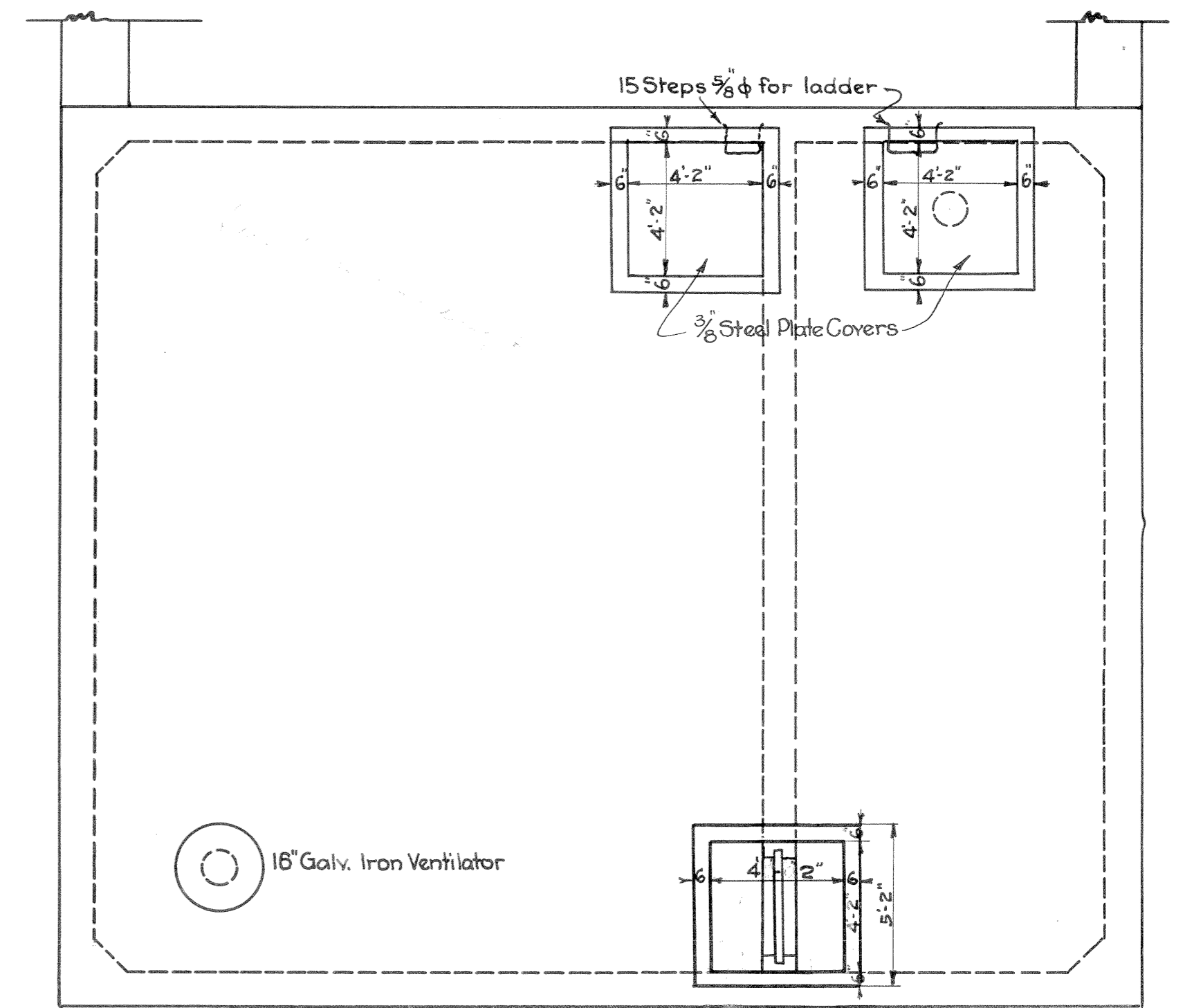
SECTION THRU BEAM AT STAIRWAY

Scale 1/2"=1'



SECTION THRU COVER FRAME

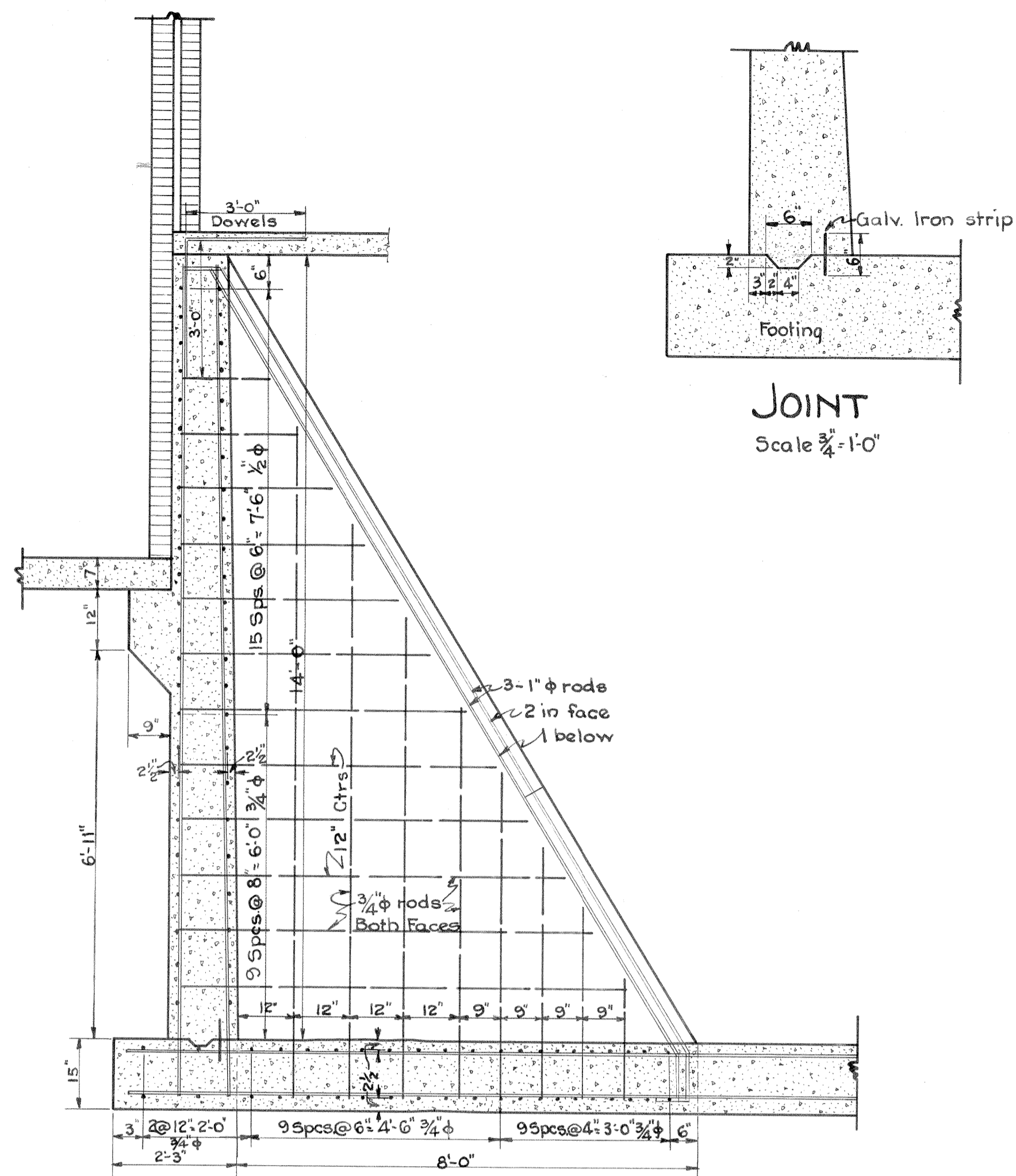
Scale 3"=1'



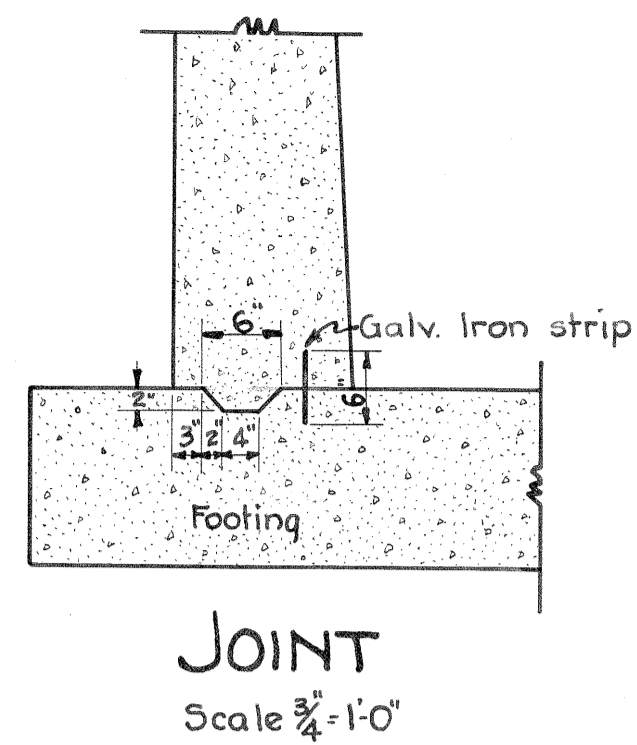
OPENINGS IN ROOF OF RECEIVING WELL

Scale 1/4"=1'

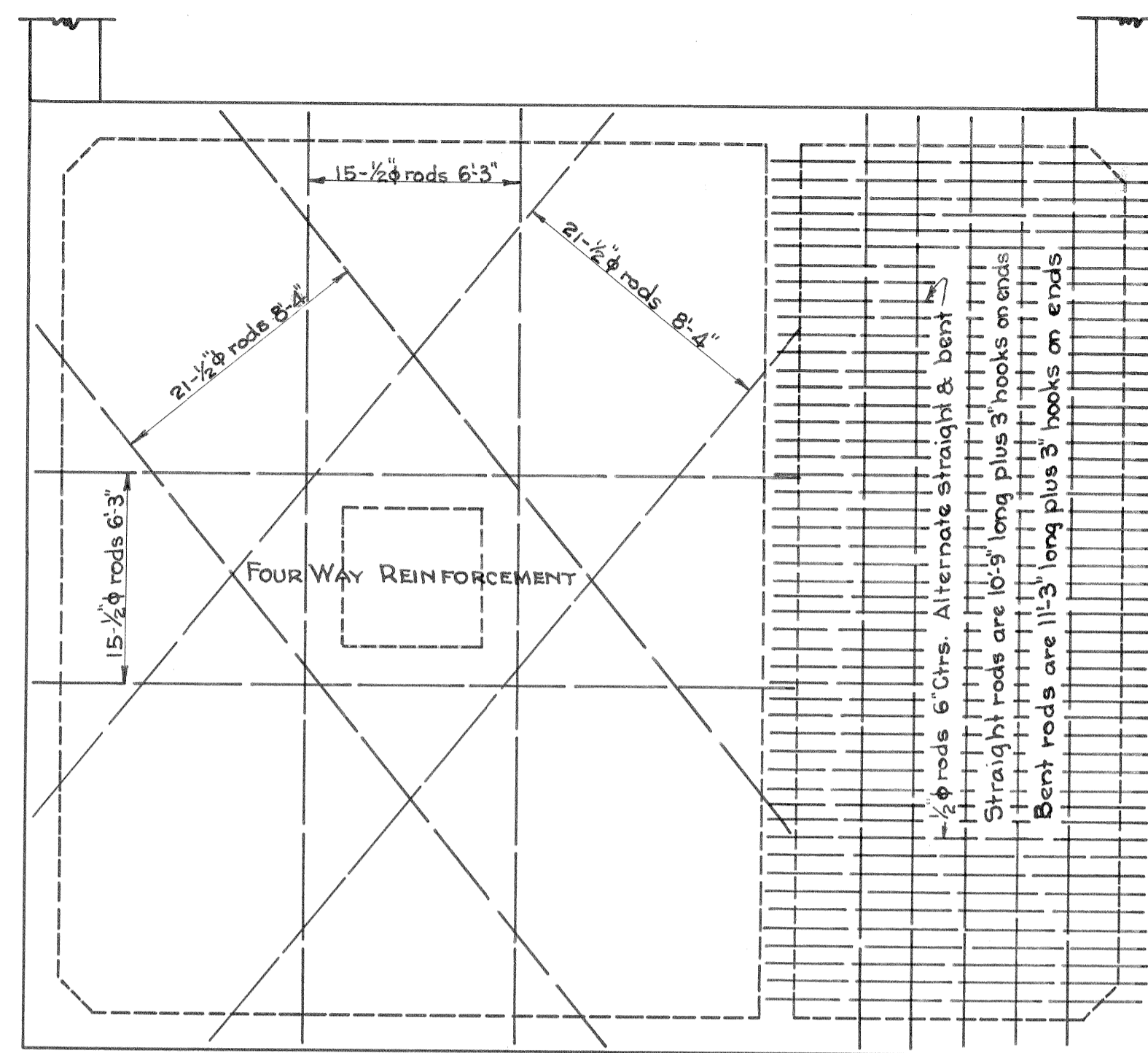
| | |
|--|-------------------|
| CITY OF MADISON, WISCONSIN WATER DEPARTMENT | |
| UNIT WELL NO. 3 | |
| PUMP HOUSE AND RECEIVING WELL | |
| Scales as shown | September 1928 |
| City Engineer | Supt. Water Dept. |
| Drawn by E.L.N. Traced by E.L.N. | W57 |



SECTION "BB"



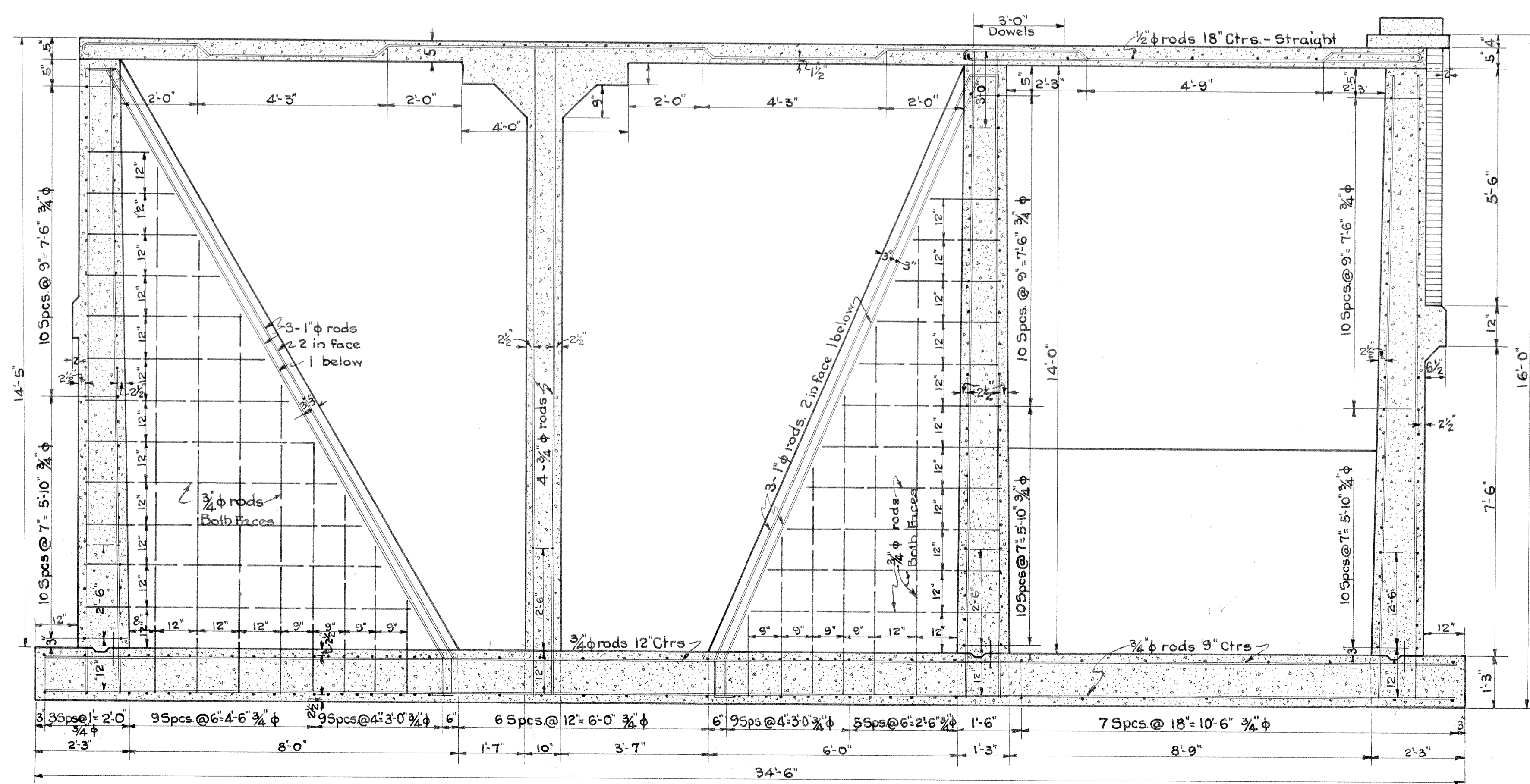
JOINT
Scale 3/4" = 1'-0"



REINFORCING STEEL IN ROOF

Scale 1/2" = 1'-0"

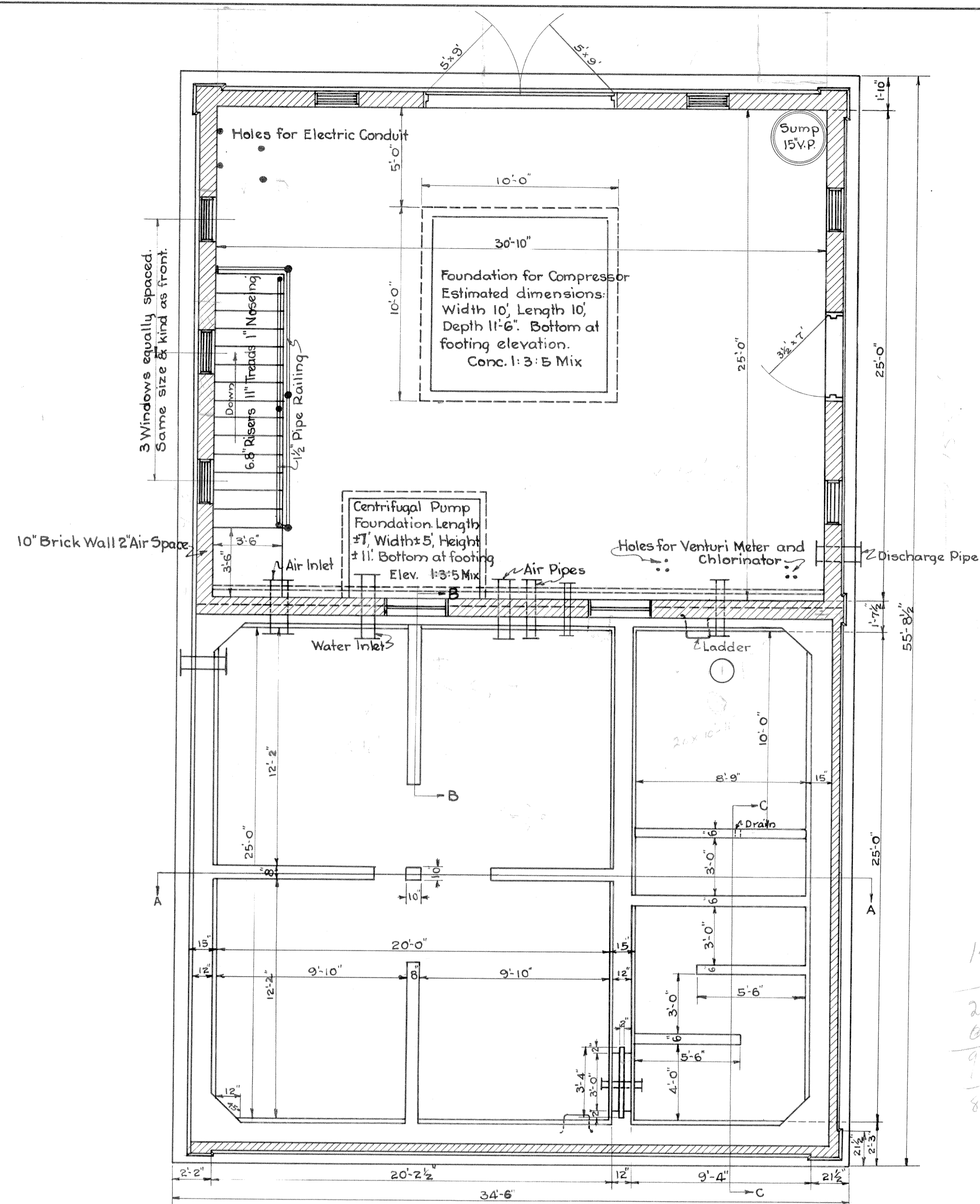
Bend diagonal rods 2' from center of column and 2' from inner edge of outer wall, rectangular rods as shown below.



SECTION "AA"

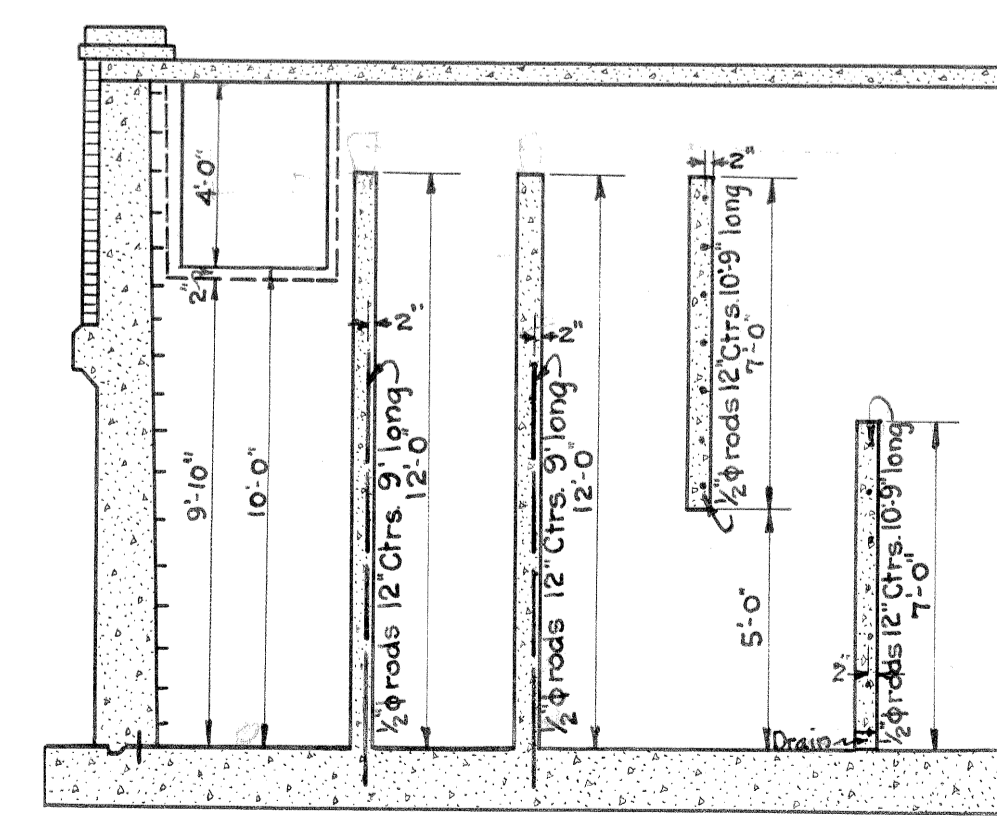
Scale 1/2" = 1'

Place 21-3/4 inch diameter rods 5 feet long, with hooks, across each outside corner. Bend all horizontal wall steel 2 inches around each corner, including dividing wall.



PLAN

Scale 1/4" = 1'



SECTION "CC"

Scale 1/2" = 1'-0"

14
6.67
2668
667
9334
1.0
87

Approved by the Common Council Sept. 15, 1928

W.K. Wender City Clerk

CITY OF MADISON, WISCONSIN

WATER DEPARTMENT

UNIT WELL NO. 3

PUMP HOUSE

AND

RECEIVING WELL

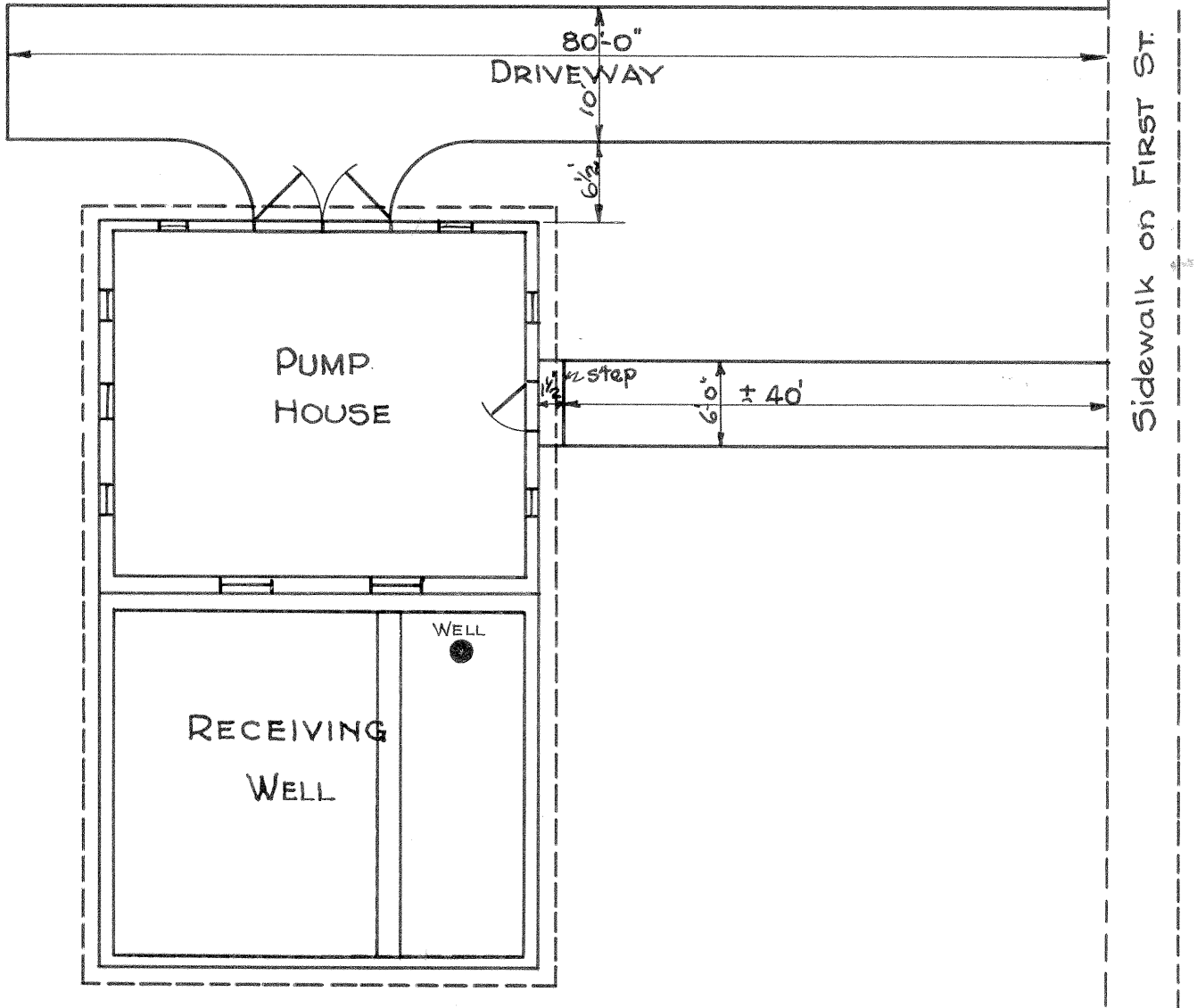
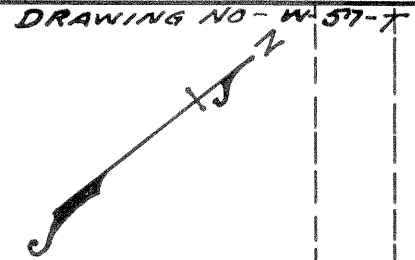
Scales as shown September 1928

E.E. Camp City Engineer

Rabmit Supt. Water Dept.

Drawn by E.L.N. Traced by E.L.N. W57

SEWAGE PUMPING STATION



| | | |
|--|--------------------------------------|-----------------------------------|
| CITY OF MADISON, WISCONSIN WATER DEPARTMENT | | |
| UNIT WELL NO. 3 | | |
| PUMP HOUSE AND RECEIVING WELL | | |
| Scale | <i>W. H. Fisher</i> City Engineer | September 28 Supt. Water Dept. |
| Drawn: ELN | Traced: ELN | W57 |