



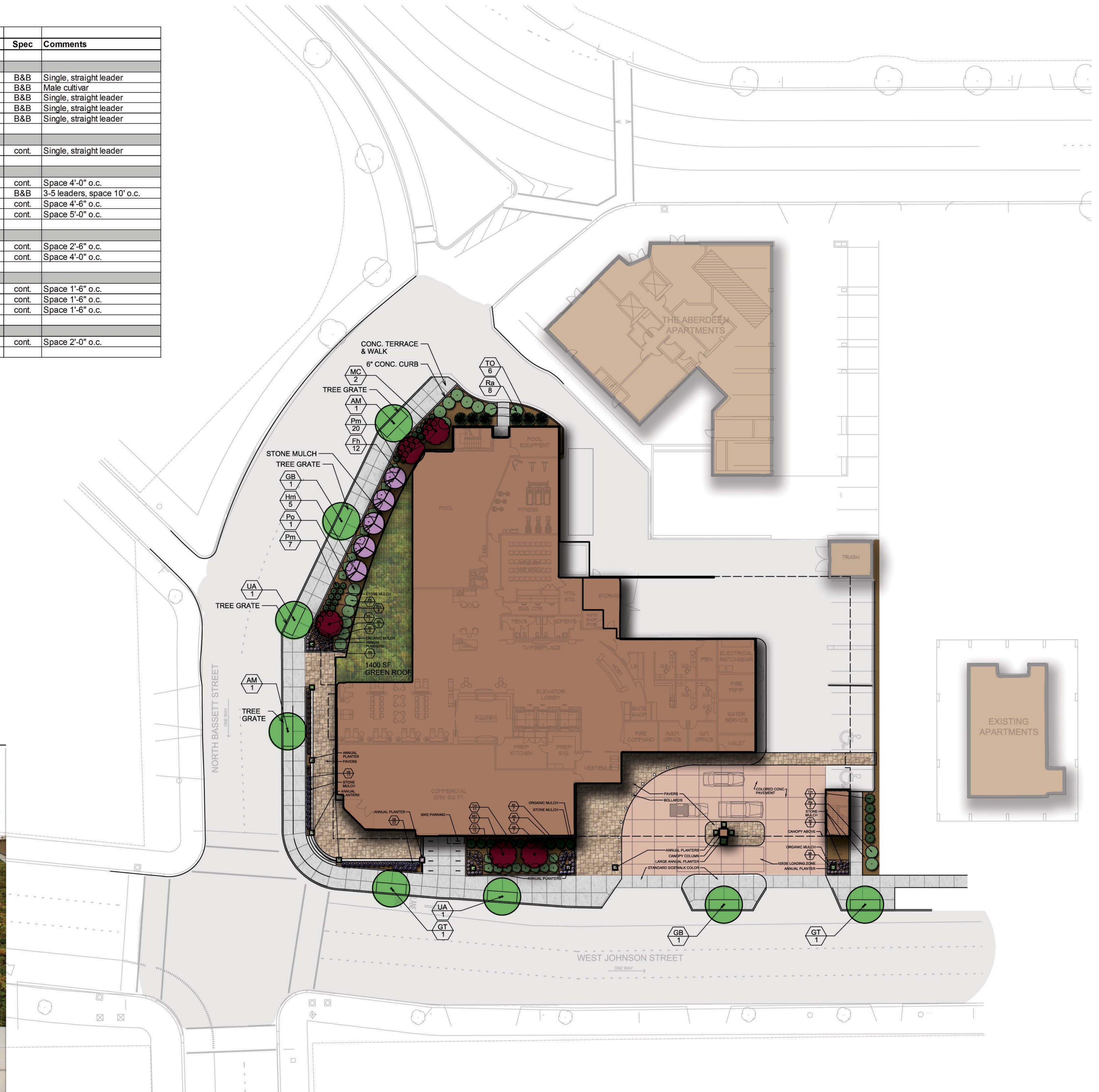
GARY BRINK & ASSOCIATES
ARCHITECTS
8401 EXCELSIOR DRIVE
MADISON, WI 53717
608-829-1750
608-829-3056 (FAX)

Landscape Plant List						
Key	Botanical Name	Common Name	Quantity	Size	Spec	Comments
Deciduous Trees						
AM	<i>Acer miyabei</i> 'Morton'	State Street Maple	2	2.5" cal.	B&B	Single, straight leader
GB	<i>Ginkgo Biloba</i> 'Autumn Gold'	Autumn Gold Ginkgo	2	2.5" cal.	B&B	Male cultivar
GT	<i>Gleditsia triacanthos inermis</i> 'Skyline'	Skyline Honeylocust	2	2.5" cal.	B&B	Single, straight leader
MC	<i>Malus 'Centzam'</i>	Centurion Crabapple	7	2" cal.	B&B	Single, straight leader
UA	<i>Ulmus americana</i> 'NewHorizons'	New Horizons Elm	2	2.5" cal.	B&B	Single, straight leader
Evergreen Trees						
TO	<i>Thuja occidentalis</i> 'Hetz Wintergreen'	Wintergreen Arborvitae	6	6' ht.	cont.	Single, straight leader
Deciduous Shrubs						
Fh	<i>Forsythia x 'Happy Centennial'</i>	Happy Centennial Forsythia	29	3' ht.	cont.	Space 4'-0" o.c.
Hm	<i>Heptacodium miconioides</i>	Seven Son Flower	8	6' ht.	B&B	3-5 leaders, space 10' o.c.
Po	<i>Physocarpus opulifolius</i> 'Seward'	Summer Wine Ninebark	12	3' ht.	cont.	Space 4'-6" o.c.
Ra	<i>Rhus aromatica</i> 'Gro-Low'	Gro Low Fragrant Sumac	10	2' spr.	cont.	Space 5'-0" o.c.
Evergreen Shrubs						
Pm	<i>Pinus mugo</i> 'Mops'	Mops Mugo Pine	40	18" spr.	cont.	Space 2'-6" o.c.
Tm	<i>Taxus x media</i> 'Tauntonii'	Taunton Yew	19	2' spr.	cont.	Space 4'-0" o.c.
Perennials/Groundcovers						
as	<i>Allium tanguticum</i> 'Summer Beauty'	Summer Beauty Allium	37	1 qt.	cont.	Space 1'-6" o.c.
ab	<i>Amsonia x 'Blue Ice'</i>	Blue Ice Bluestar	21	1 qt.	cont.	Space 1'-6" o.c.
sc	<i>Salvia nemorosa</i> 'Caradonna'	Caradonna Salvia	32	1 qt.	cont.	Space 1'-6" o.c.
Ornamental Grasses						
ca	<i>Calamagrostis x acutiflora</i> 'Karl Foerster'	Karl Foerster Feather Reed Grass	33	1 gal.	cont.	Space 2'-0" o.c.

Planter - Wausau Tile TF4191 (30" sq. x 30" tall)



Green Roof Tray System



PROJECT: W. JOHNSON STREET & N. BASSETT STREET MIXED USE DEVELOPMENT
W. JOHNSON STREET & N. BASSETT STREET
MADISON, WISCONSIN 53703

DEVELOPER: RAYMOND MANAGEMENT COMPANY
8333 GREENWAY BLVD., SUITE 200
MIDDLETON, WISCONSIN 53562

©2010 GARY BRINK & ASSOC.
Any duplication, reproduction, or use by any other party is prohibited unless prior written authorization is received from GARY BRINK & ASSOC.
PROJECT: 200727
DRAWN BY:
DATE:
SCALE:

