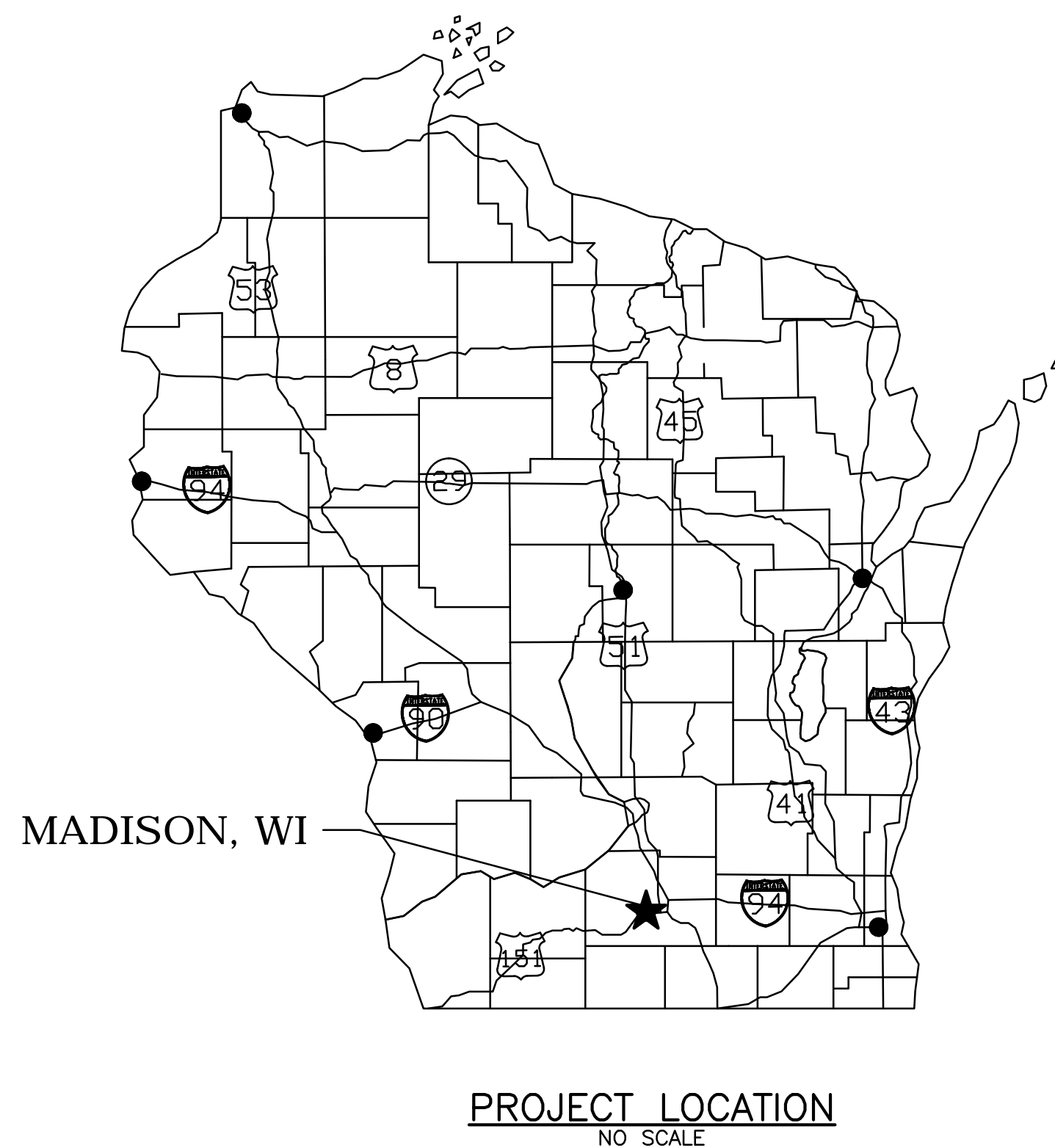


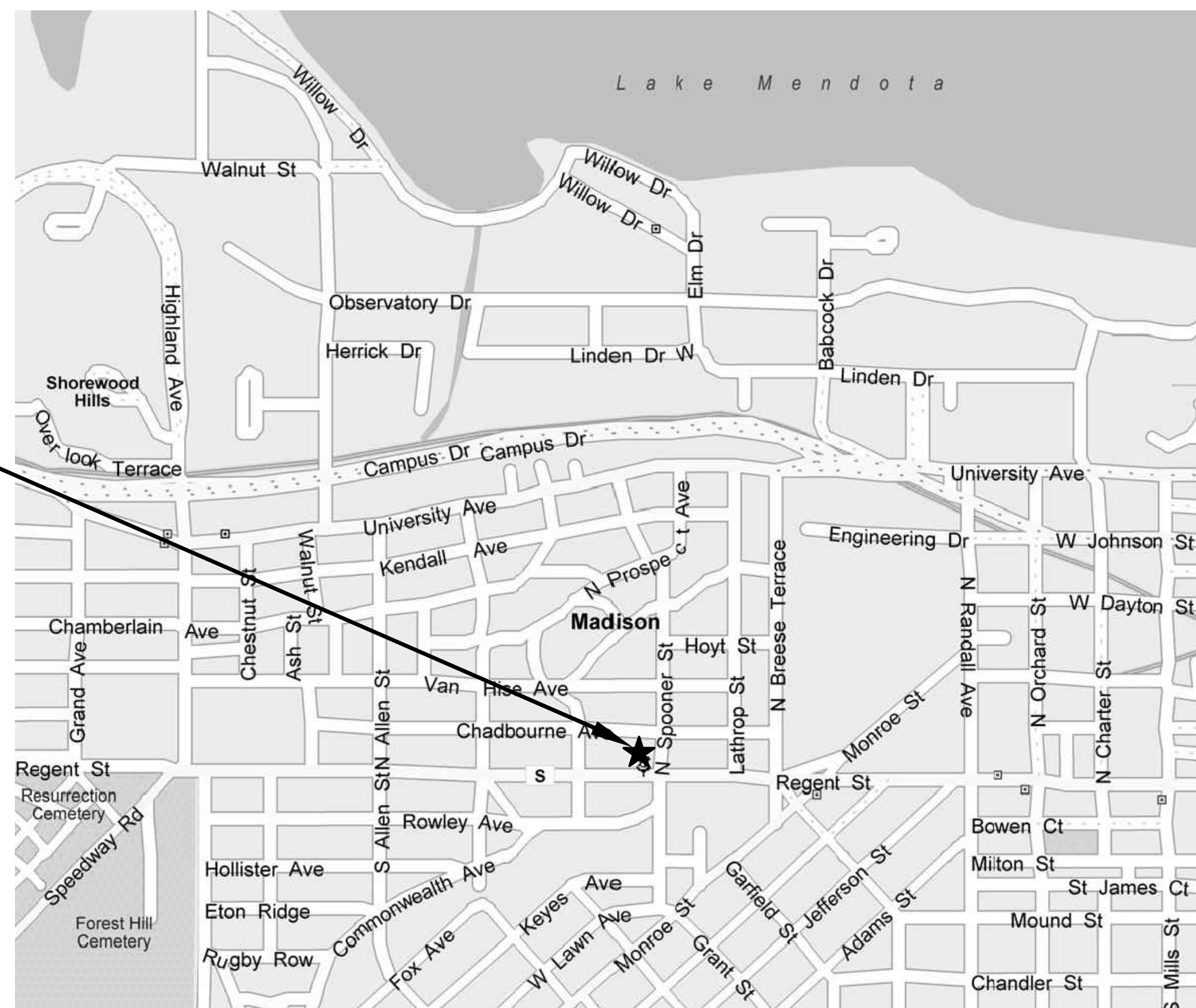
NOT FOR CONSTRUCTION

OLIVE JONES PARK IMPROVEMENTS

FOR THE CITY OF MADISON MADISON, WISCONSIN MARCH 2012



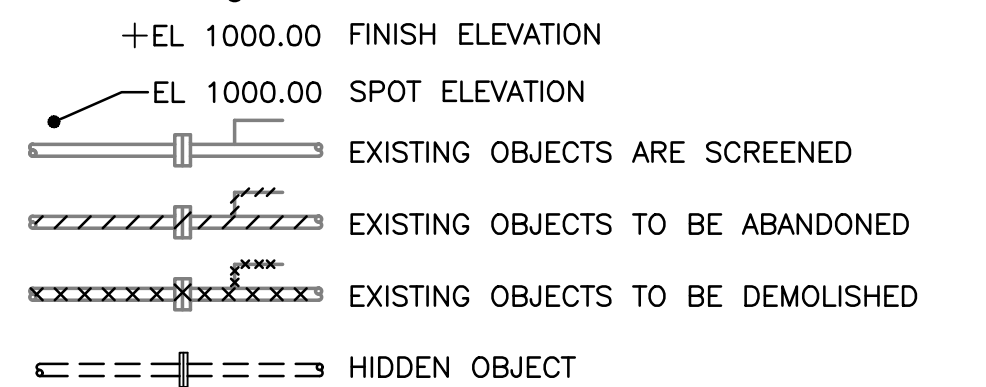
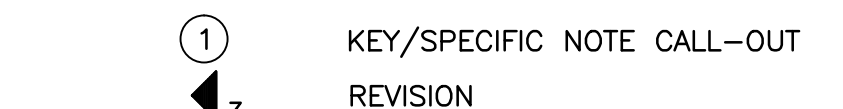
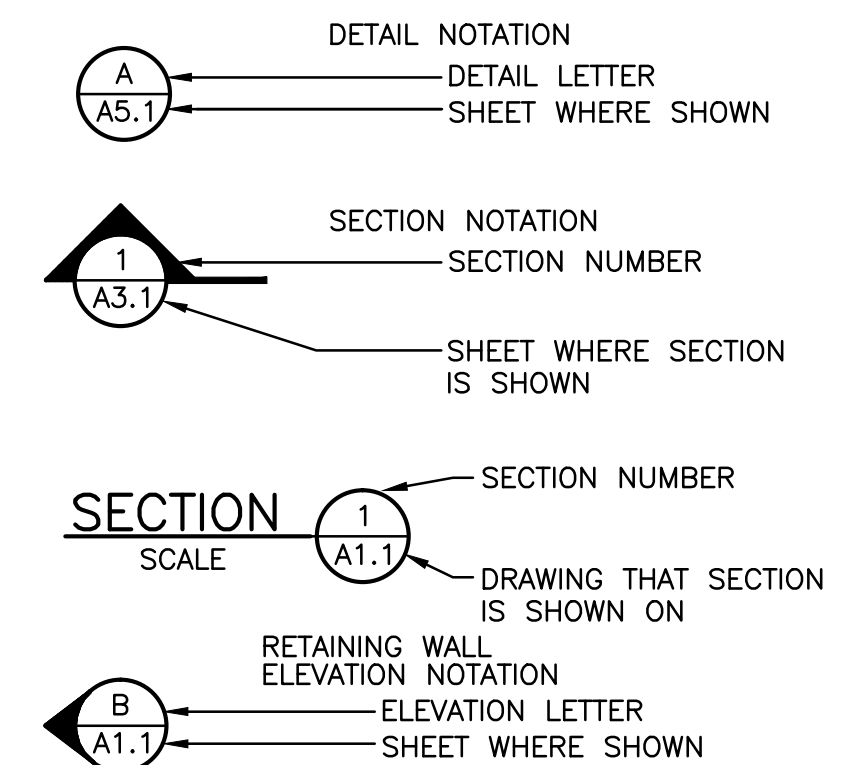
1802 REGENT STREET



LIST OF DRAWINGS

SHEET NO.	DRAWING TITLE
1	TITLE SHEET
2	SITE DEMOLITION PLAN
3	SITE PLAN
4	ENLARGED PLANS
5	SECTIONS
6	DETAILS

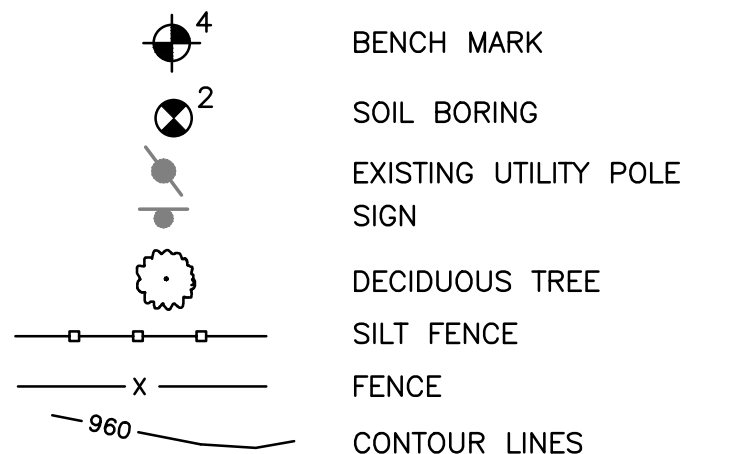
DRAFTING SYMBOLS



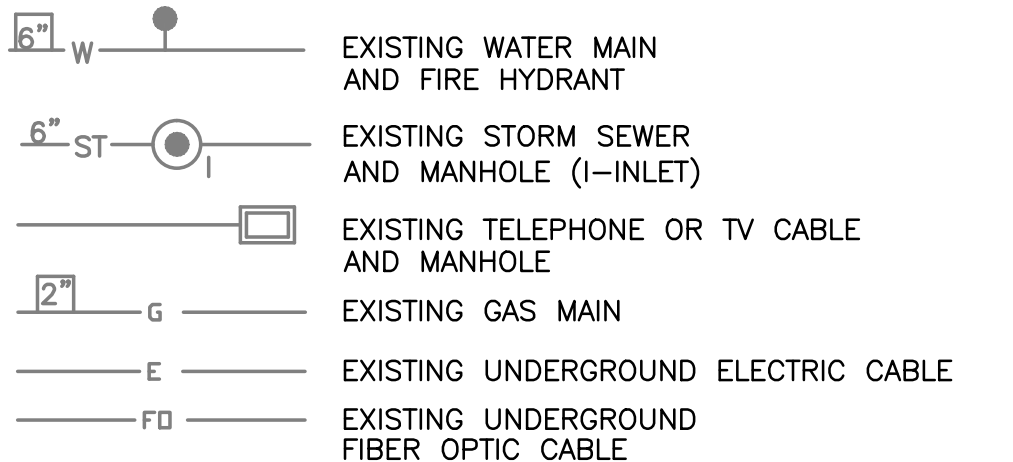
ARCHITECTURAL SYMBOLS



TOPOGRAPHICAL SYMBOLS



UNDERGROUND UTILITY SYMBOLS



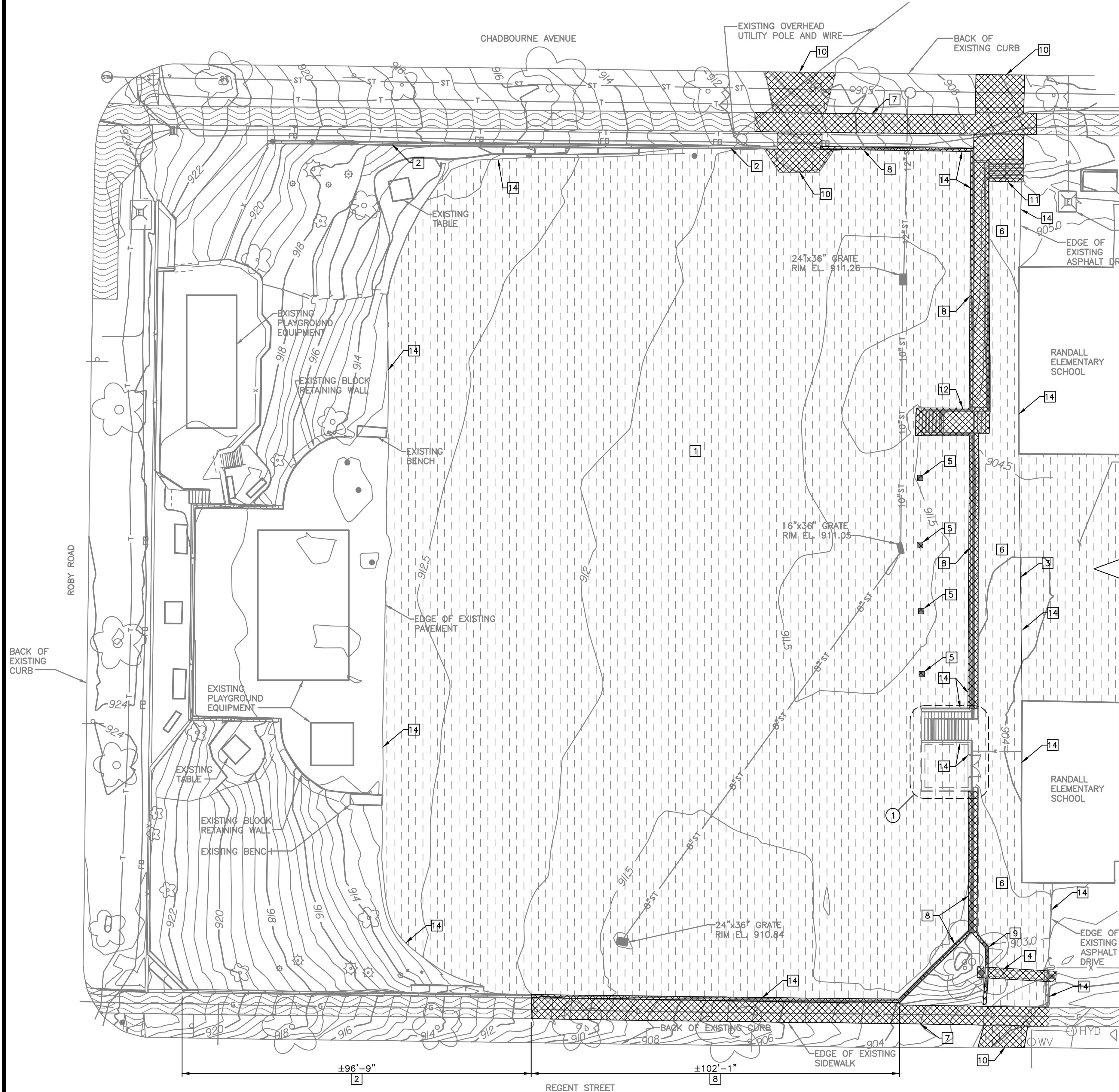
910 West Wingra Drive
Madison, WI 53715
608-251-4843
608-251-8655 fax
www.strand.com

CONTRACT 1-2012



SHEET
1

NOT FOR CONSTRUCTION



GENERAL NOTES:

1. ALL ELEVATIONS ARE IN FEET AND ARE BASED ON NAVD88 DATUM.
2. EXISTING INFORMATION SHOWN ON DRAWINGS WAS OBTAINED FROM FIELD MEASUREMENTS AND CITY OF MADISON TOPOGRAPHIC SURVEY COMPLETED FROM DECEMBER 2009 TO NOVEMBER 2011.

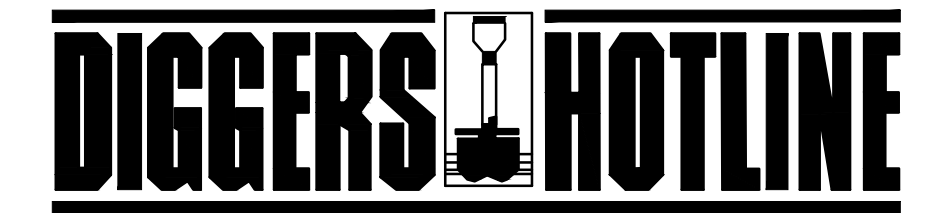
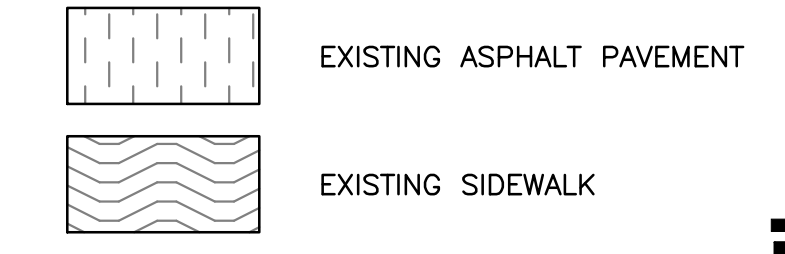
DEMOLITION NOTES:

- 1 REMOVE EXISTING BITUMINOUS ASPHALT PAVEMENT. APPROXIMATE AREA = 160FTx230FT.
- 2 REMOVE EXISTING FENCE. CUT FENCE POSTS FLUSH WITH TOP OF CONCRETE. BURN BACK EMBEDDED FENCE POST 2" AND PATCH WITH GROUT.
- 3 SAWCUT EXISTING ASPHALT PAVEMENT.
- 4 REMOVE EXISTING GATE AND GATE POSTS.
- 5 REMOVE EXISTING POSTS.
- 6 REMOVE EXISTING BITUMINOUS ASPHALT ALLEYWAY FROM CHADBOURNE AVENUE TO REGENT STREET.
- 7 REMOVE EXISTING SIDEWALK.
- 8 REMOVE EXISTING FENCE, CONCRETE RETAINING WALL(S) AND CONCRETE RETAINING WALL FOUNDATION(S).
- 9 REMOVE EXISTING CONCRETE RETAINING WALL AND FOOTING.
- 10 REMOVE CONCRETE APRON/DRIV.
- 11 REMOVE CONCRETE STAIRS.
- 12 REMOVE CONCRETE STAIRS, HANDRAILS, CONCRETE RETAINING WALLS AND FOOTINGS.
- 13 SAWCUT AND REMOVE EXISTING RETAINING WALL AND FOOTING.
- 14 LIMITS OF ASPHALT REMOVAL.

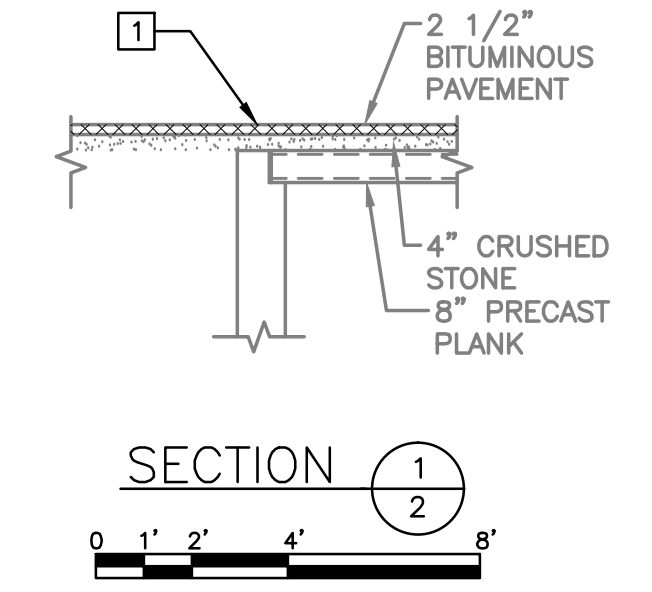
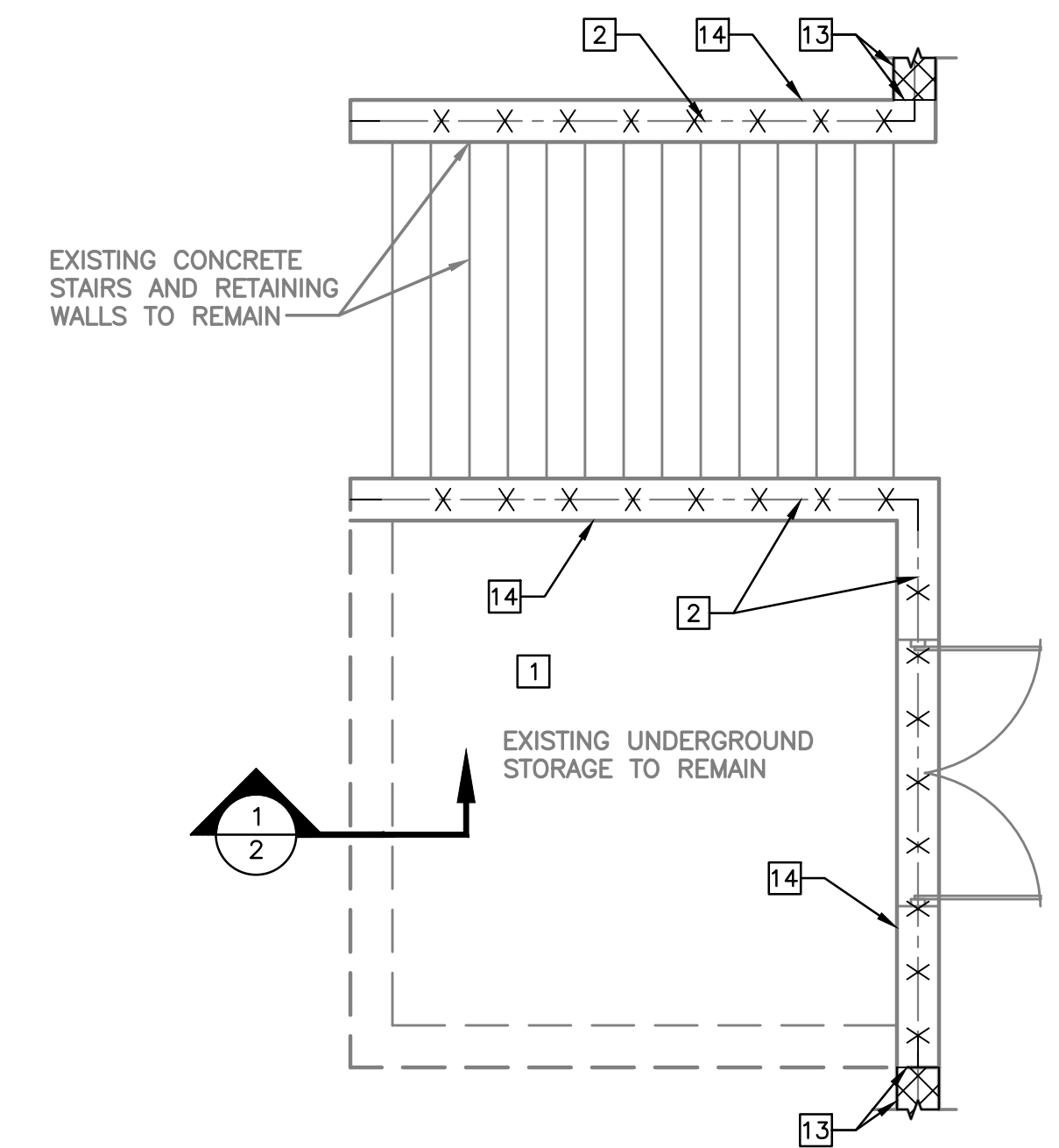
KEY NOTES:

- 1 SEE ENLARGED PLAN (A/2) THIS SHEET.

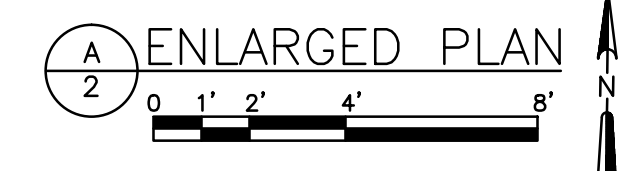
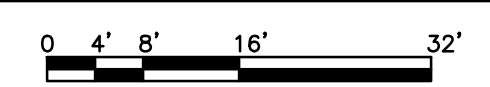
LEGEND



Toll Free (800) 242-8511
 Milwaukee Area (414) 259-1181
 Hearing Impaired TDD (800) 542-2289
 www.DiggersHotline.com



SITE DEMOLITION PLAN



DATE:	
REVISIONS	
NO.	

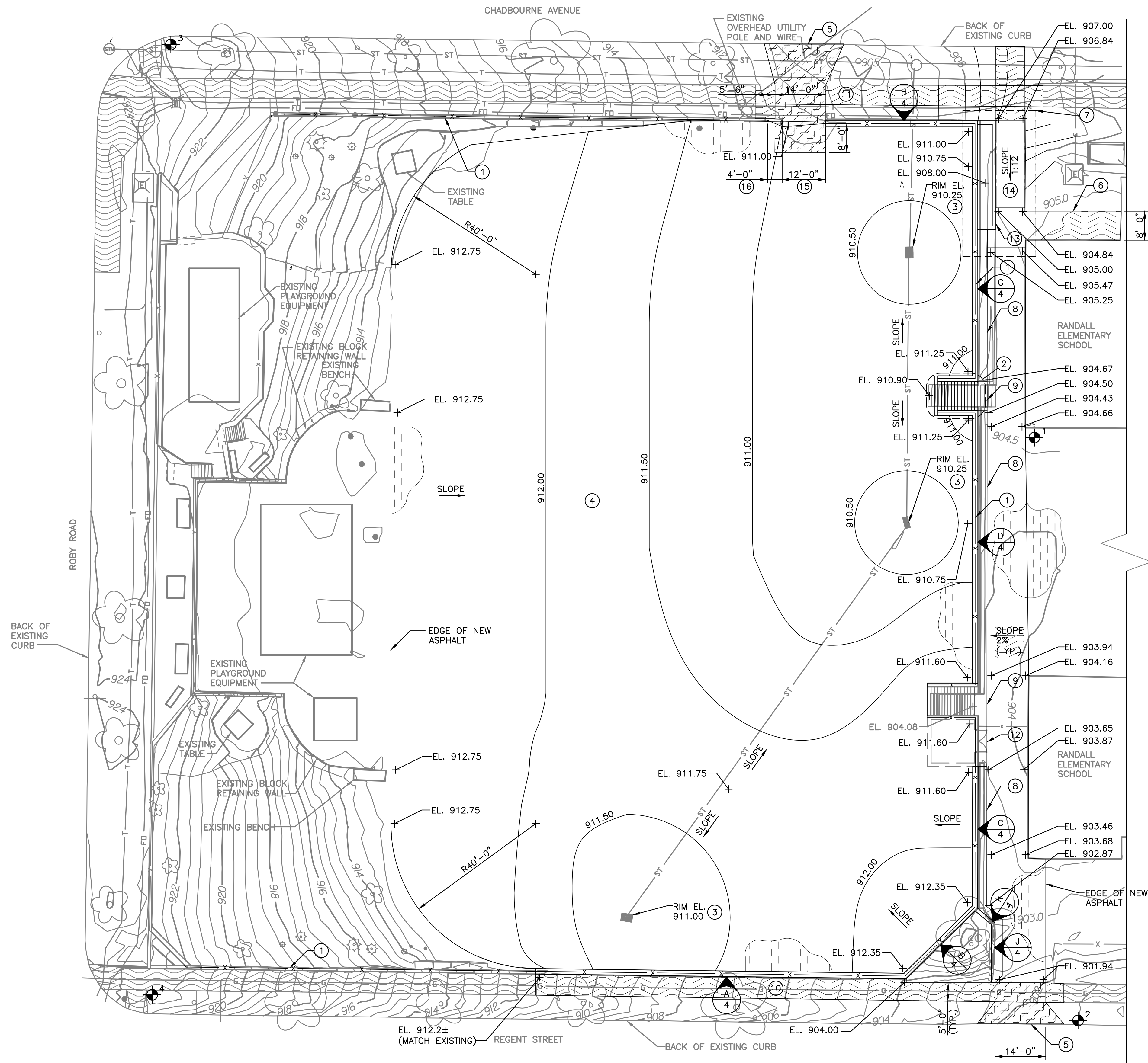
SITE DEMOLITION PLAN

OLIVE JONES PARK IMPROVEMENTS
 CITY OF MADISON
 MADISON, WISCONSIN

JOB NO.
1020.063
 PROJECT MGR.
KEITH BEHREND



SHEET
2



GENERAL NOTES:

1. DISTURBED AREAS NOT BEING PAVED SHALL GET TERRACE SEEDING AND EROSION CONTROL MAT CLASS I, TYPE B.
 2. ALL EXPANSION JOINT FILLER SHALL BE ASPHALTIC MEETING ASTM D994.
- KEY NOTES:**
- ① NEW FENCE.
 - ② SEE ENLARGED STAIR PLAN $\frac{A}{5}$.
 - ③ SET EXISTING INLET GRATES AT NEW RIM ELEVATIONS.
 - ④ NEW ASPHALT PARKING LOT.
 - ⑤ NEW 7-INCH CONCRETE DRIVE AND SIDEWALK.
 - ⑥ NEW 5-INCH CONCRETE SIDEWALK. SLOPE AWAY FROM RETAINING WALL 1/4" PER FOOT. PROVIDE 3/4-INCH EXPANSION JOINT FILLER BETWEEN EDGE OF SIDEWALK AND BUILDING. SLOPE AWAY FROM BUILDING 1/4" PER FOOT.
 - ⑦ SEE ENLARGED PLAN $\frac{B}{5}$.
 - ⑧ 30-INCH TYPE 'X' CONCRETE CURB AND GUTTER.
 - ⑨ PEDESTRIAN RAMP SECTION TYPE 'X' CONCRETE CURB AND GUTTER. PAY AS TYPE 'X' CONCRETE CURB AND GUTTER. $\frac{C}{6}$.
 - ⑩ NEW 5-INCH CONCRETE SIDEWALK. SLOPE AWAY FROM RETAINING WALL 1/4" PER FOOT. PROVIDE 1/2-INCH EXPANSION JOINT FILLER BETWEEN EDGE OF SIDEWALK AND RETAINING WALL.
 - ⑪ NEW 5-INCH CONCRETE SIDEWALK.
 - ⑫ DRIVEWAY RAMP SECTION TYPE 'X' CONCRETE CURB AND GUTTER. PAY AS TYPE 'X' CONCRETE CURB AND GUTTER.
 - ⑬ TERRACED PLANTING AREA.
 - ⑭ CONCRETE RAMP.
 - ⑮ 12-FOOT SINGLE-SWING AUTOMOBILE GATE.
 - ⑯ 4-FOOT SINGLE-SWING MAN GATE.

BENCH MARKS:

NO.	DESCRIPTION	ELEVATION
1	TOP OF RED CONCRETE FOUNDATION AT CORNER OF BUILDING	906.00
2	TOP NUT HYDRANT	904.19
3	TOP NUT HYDRANT	925.62
4	TOP NUT HYDRANT	925.11

LEGEND

- EXISTING ASPHALT PAVEMENT
- EXISTING SIDEWALK
- NEW ASPHALT PAVEMENT
- NEW 5-INCH SIDEWALK
- NEW 7-INCH SIDEWALK AND DRIVE

NOT FOR CONSTRUCTION

DATE:					

NO.	REVISIONS

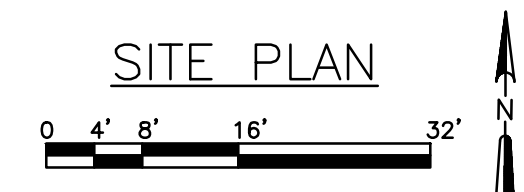
SITE PLAN

OLIVE JONES PARK IMPROVEMENTS
CITY OF MADISON
MADISON, WISCONSIN

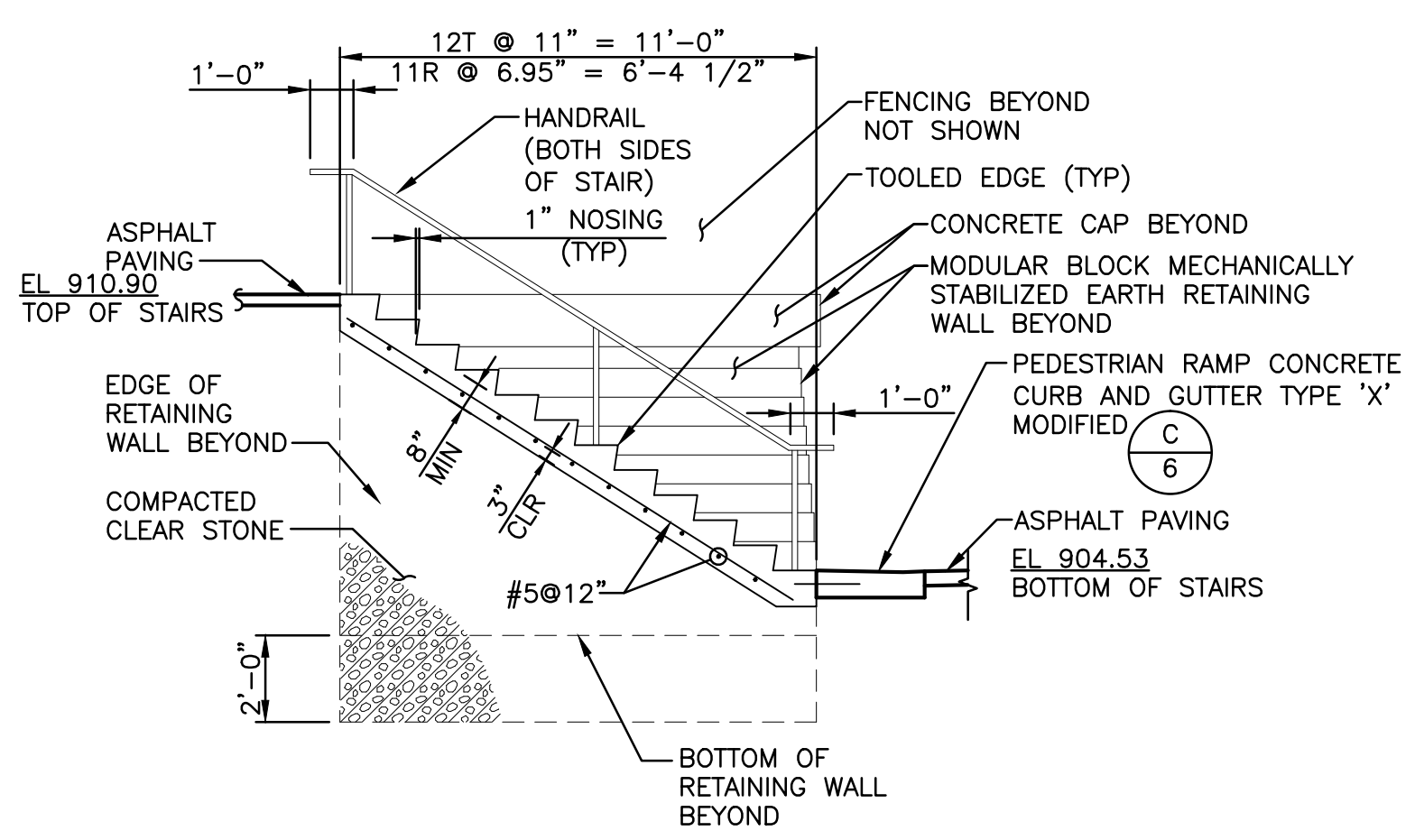
JOB NO.
1020.063
PROJECT MGR.
KEITH BEHREND



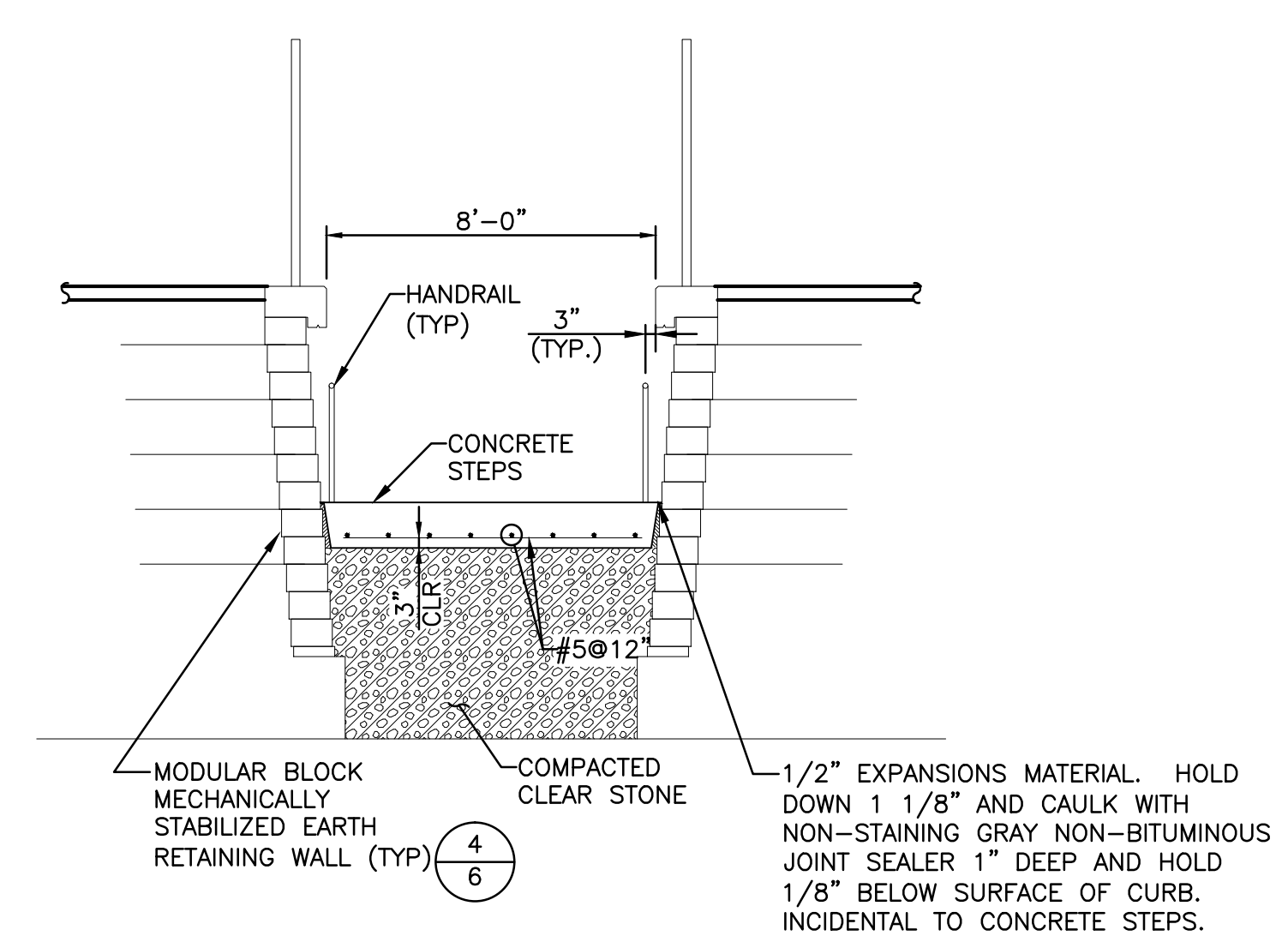
SHEET
3



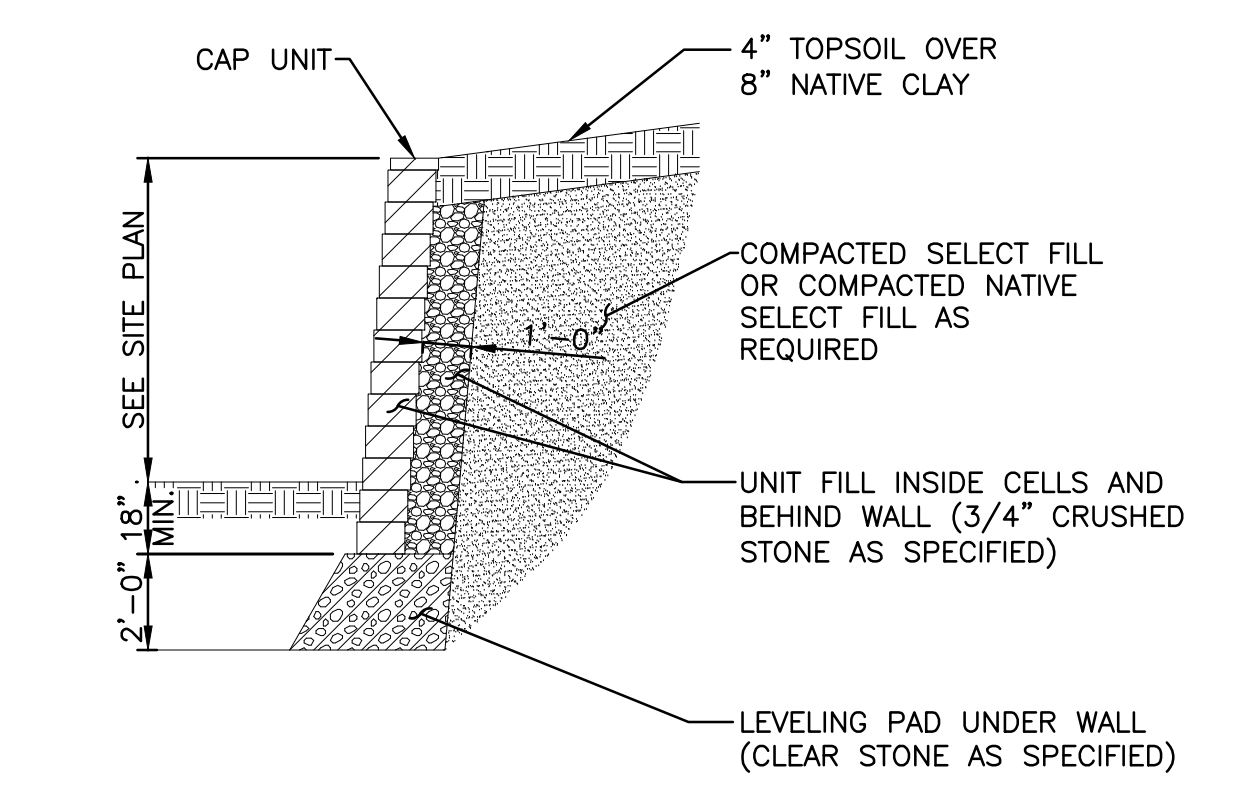
NOT FOR
CONSTRUCTION



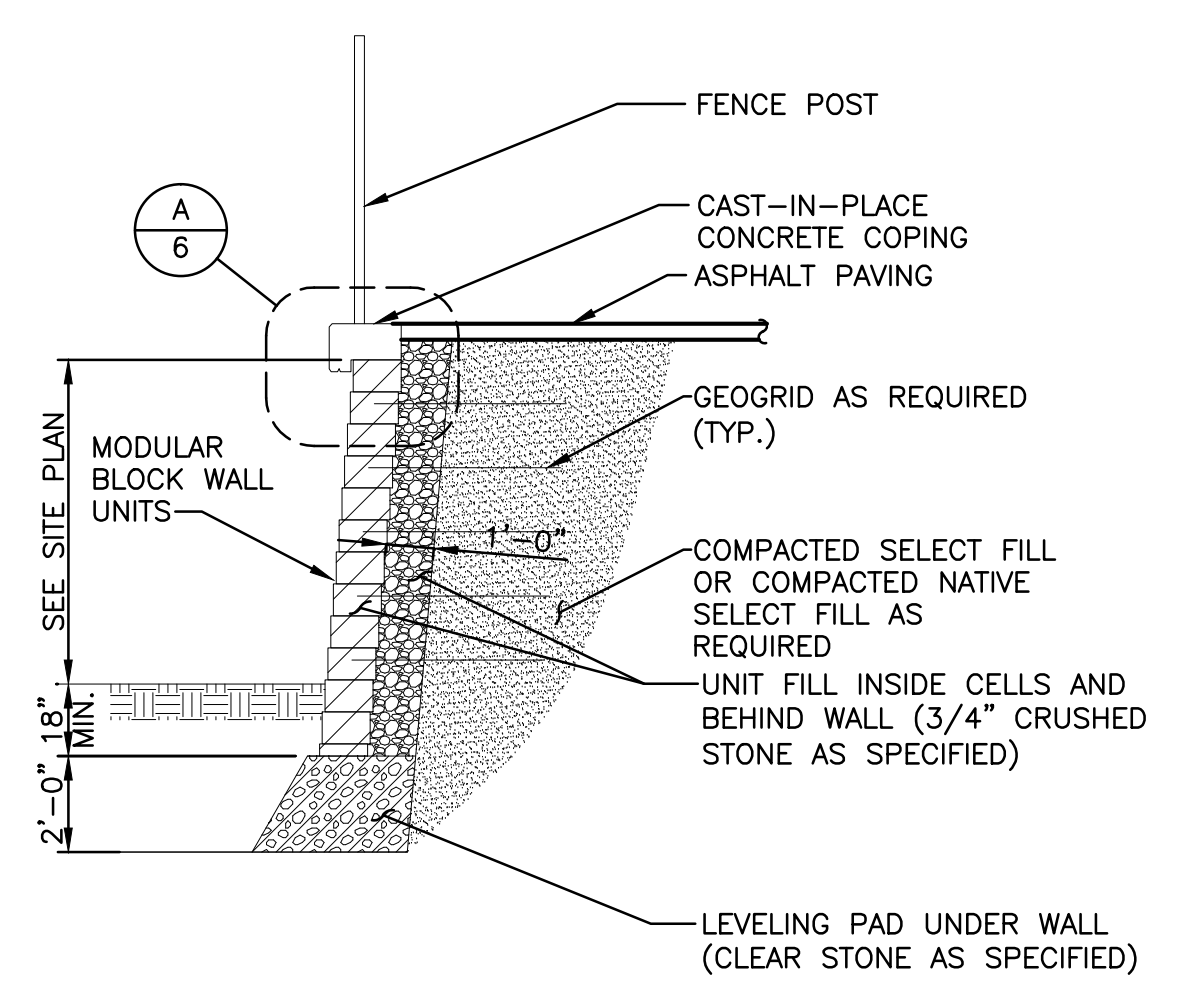
LONGITUDINAL STAIR SECTION 1/6



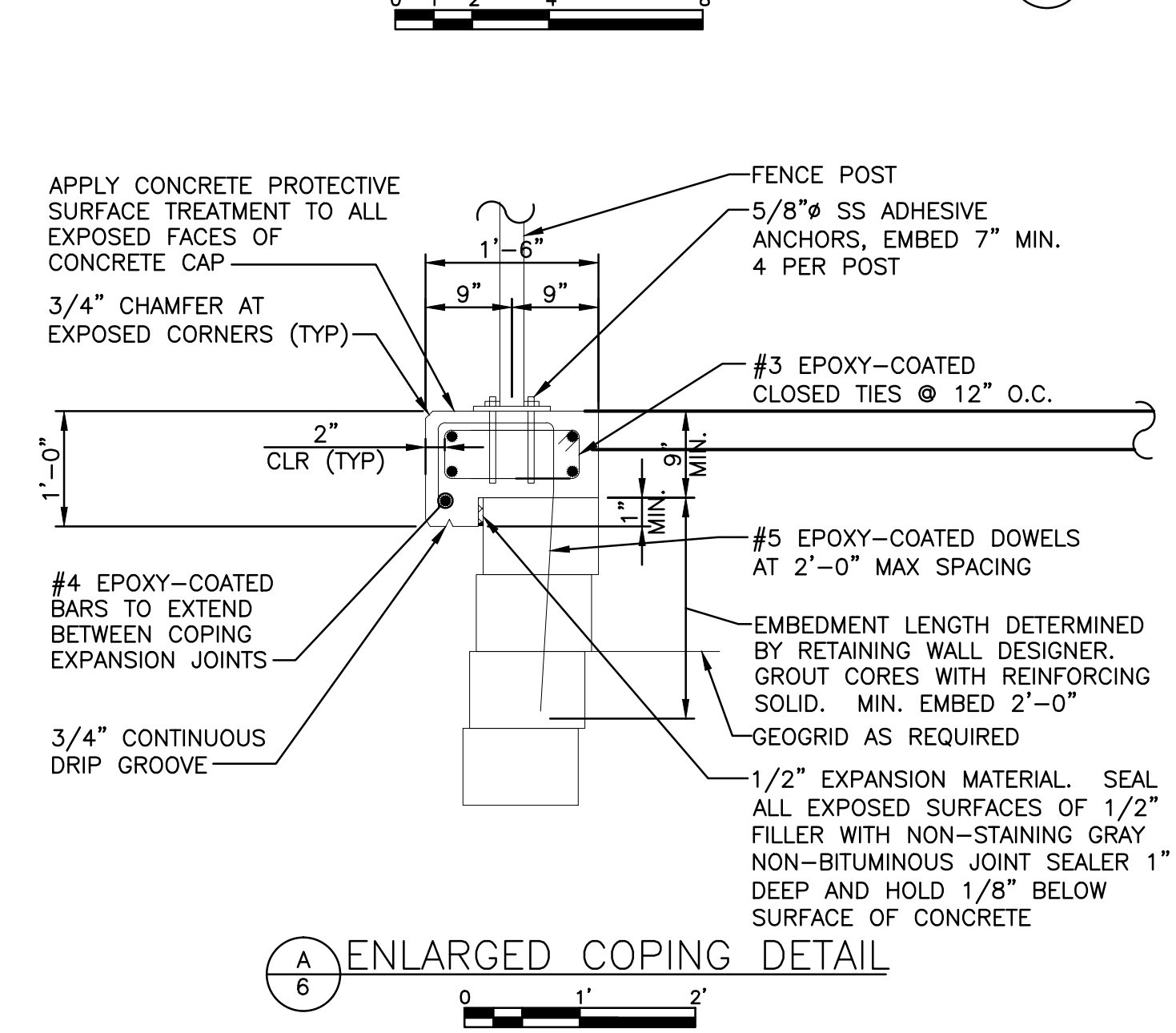
TRANSVERSE STAIR SECTION 2/6



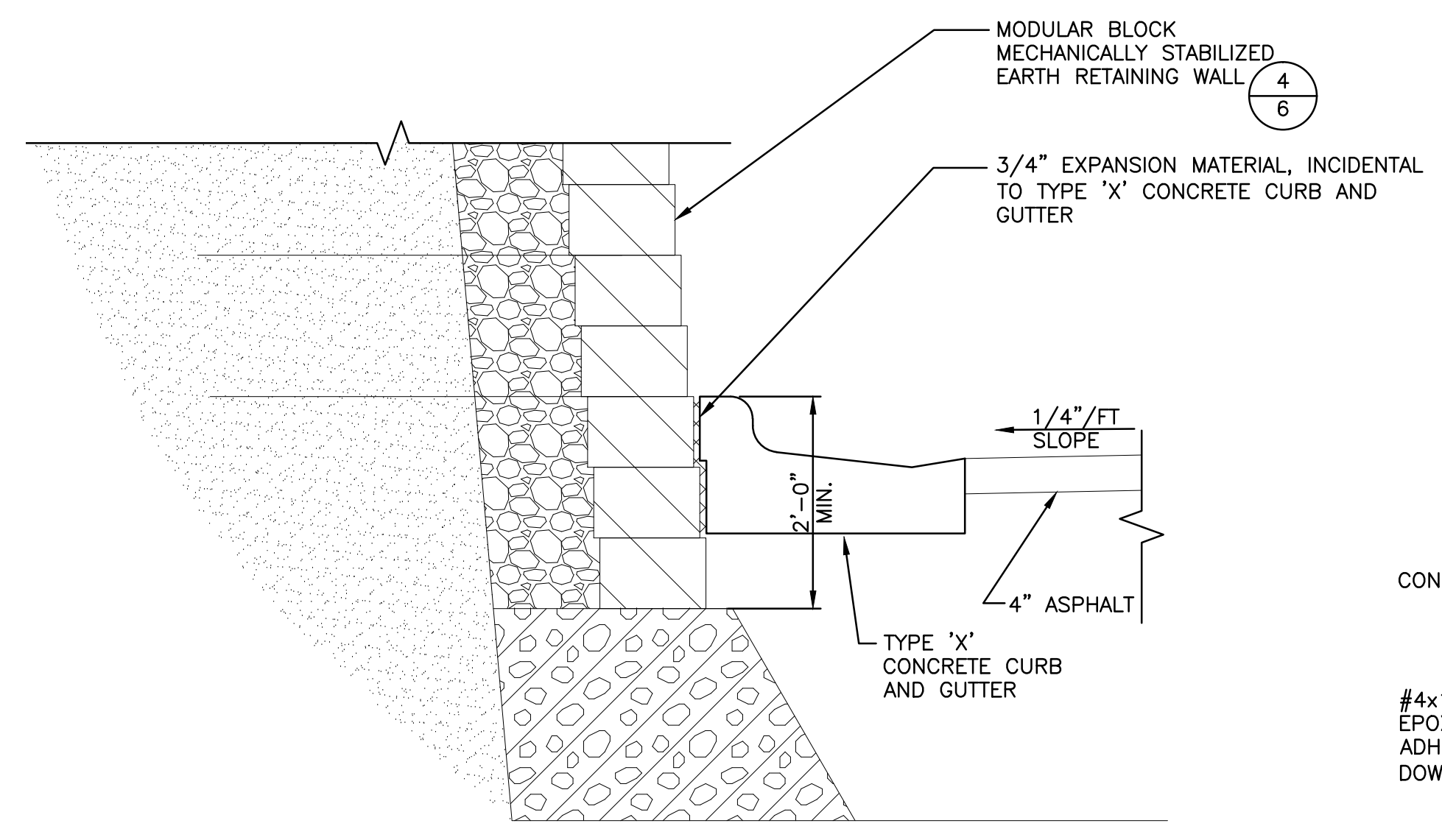
TYPICAL WALL MODULAR BLOCK GRAVITY 3/6



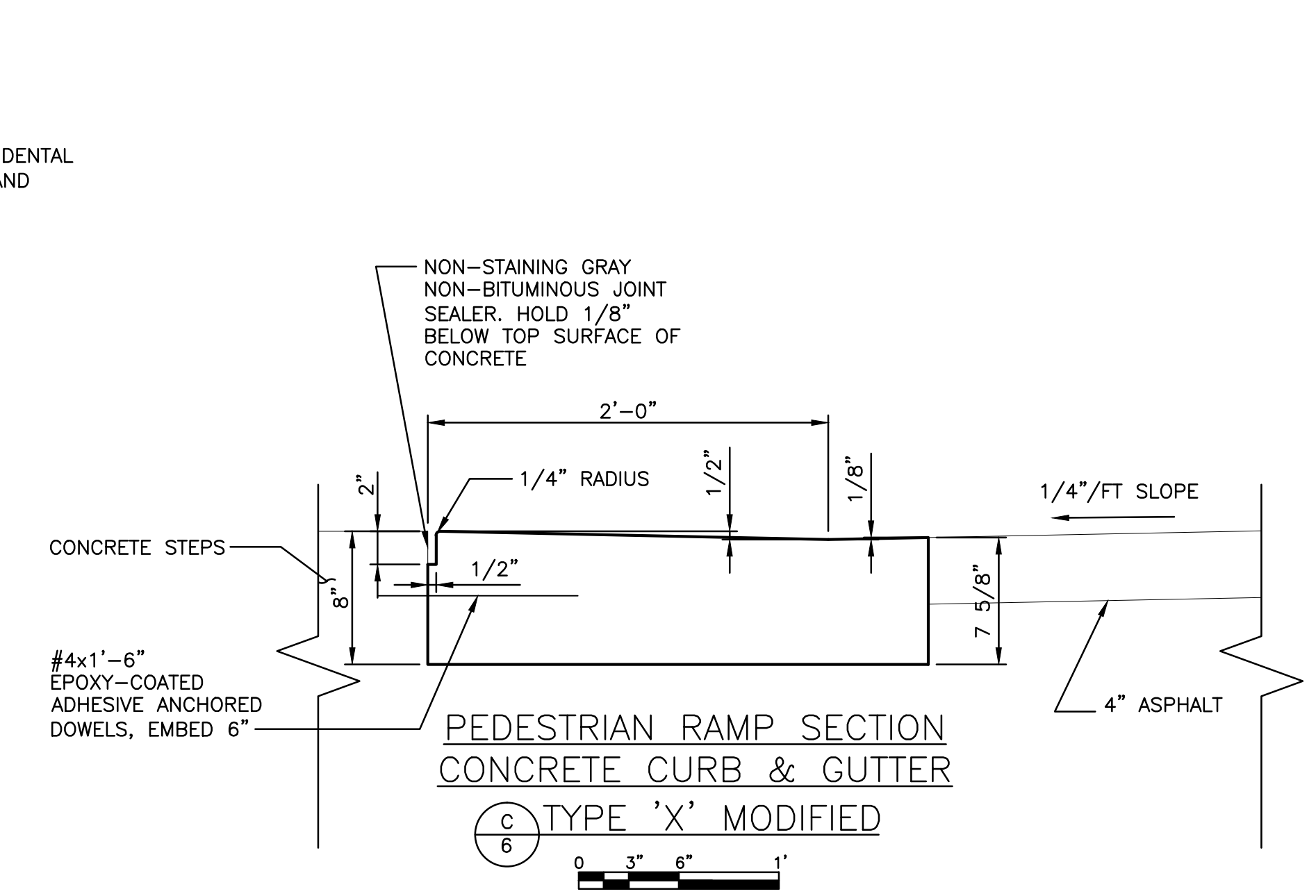
TYPICAL MODULAR BLOCK MECHANICALLY STABILIZED EARTH RETAINING WALL SECTION 4/6



A/6 ENLARGED COPING DETAIL



B/6 CURB DETAIL



C/6 PEDESTRIAN RAMP SECTION CONCRETE CURB & GUTTER TYPE 'X' MODIFIED

NO.	REVISIONS	DATE:

DETAILS

OLIVE JONES PARK IMPROVEMENTS
CITY OF MADISON
MADISON, WISCONSIN

JOB NO.
1020.063
PROJECT MGR.
KEITH BEHREND



SHEET
6