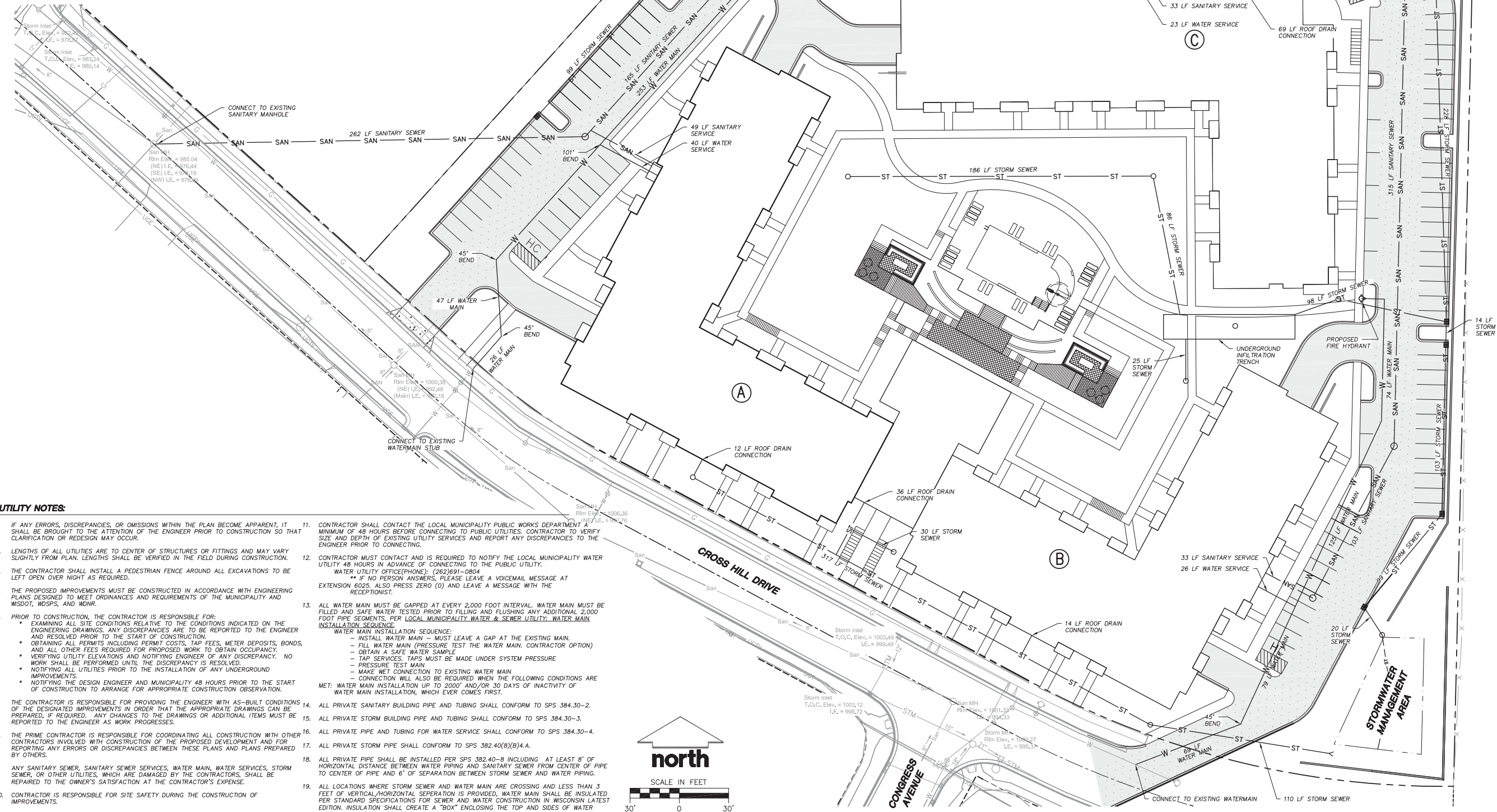


LEGEND (UTILITY PLAN)

- PROPERTY LINE
- RIGHT-OF-WAY
- EASEMENT LINE
- PROPOSED BUILDING ADDITION
- ST STORM SEWER
- SAN SANITARY SEWER
- W WATER MAIN

DEWATERING NOTES:

- DEWATERING FROM POND OR ANY OTHER CONSTRUCTION NOT DRAINING INTO POND SHALL BE PUMPED THROUGH A TYPE II GEOTEXTILE FILTER BAG IN ACCORDANCE WITH WDNR TECHNICAL STANDARD 1061. INSTALL BAGS PER WDNR TECHNICAL STANDARD 1061.
- MAXIMUM PUMPING RATE ALLOWED FOR DEWATERING IS 250 GPM FROM A 3-INCH PUMP. HIGHER RATES REQUIRE LARGER AND/OR MULTIPLE GEOTEXTILE FILTER BAGS. CONTACT ENGINEER IF ADDITIONAL PUMP RATE IS REQUIRED.
- CONTRACTOR TO INSPECT DEVICES AT START AND END OF WORKING DAY AND REPAIR DEVICES AS NEEDED TO MAINTAIN EFFECTIVE OPERATING CONDITION. MAINTENANCE OF BMPS SHOULD BE PROACTIVE, NOT REACTIVE.
- SEDIMENT SHALL BE REMOVED FROM DEVICES TO MAINTAIN EFFECTIVENESS. ALL SEDIMENT COLLECTED IN DEWATERING DEVICES SHALL BE PROPERLY DISPOSED OF TO PREVENT SEDIMENT DISCHARGE TO WETLANDS/WATERS OF THE STATE OF WISCONSIN.
- ALL DEWATERING PRACTICES SHALL BE IN ACCORDANCE WITH THE LATEST EDITION OF WDNR TECHNICAL STANDARD 1061



UTILITY NOTES:

- IF ANY ERRORS, DISCREPANCIES, OR OMISSIONS WITHIN THE PLAN BECOME APPARENT, IT SHALL BE BROUGHT TO THE ATTENTION OF THE ENGINEER PRIOR TO CONSTRUCTION SO THAT CLARIFICATION OR REDESIGN MAY OCCUR.
- LENGTHS OF ALL UTILITIES ARE TO CENTER OF STRUCTURES OR FITTINGS AND MAY VARY SLIGHTLY FROM PLAN. LENGTHS SHALL BE VERIFIED IN THE FIELD DURING CONSTRUCTION.
- THE CONTRACTOR SHALL INSTALL A PEDESTRIAN FENCE AROUND ALL EXCAVATIONS TO BE LEFT OPEN OVER NIGHT AS REQUIRED.
- THE PROPOSED IMPROVEMENTS MUST BE CONSTRUCTED IN ACCORDANCE WITH ENGINEERING PLANS DESIGNED TO MEET ORDINANCES AND REQUIREMENTS OF THE MUNICIPALITY AND WISDOT, WDS&S, AND WDNR.
- PRIOR TO CONSTRUCTION, THE CONTRACTOR IS RESPONSIBLE FOR:
 - EXAMINING ALL SITE CONDITIONS RELATIVE TO THE CONDITIONS INDICATED ON THE ENGINEERING DRAWINGS. ANY DISCREPANCIES ARE TO BE REPORTED TO THE ENGINEER AND RESOLVED PRIOR TO THE START OF CONSTRUCTION.
 - OBTAINING ALL PERMITS INCLUDING PERMIT COSTS, TAP FEES, METER DEPOSITS, BONDS, AND ALL OTHER FEES REQUIRED FOR PROPOSED WORK TO OBTAIN OCCUPANCY.
 - VERIFYING UTILITY ELEVATIONS AND NOTIFYING ENGINEER OF ANY DISCREPANCY. NO WORK SHALL BE PERFORMED UNTIL THE DISCREPANCY IS RESOLVED.
 - NOTIFYING ALL UTILITIES PRIOR TO THE INSTALLATION OF ANY UNDERGROUND IMPROVEMENTS.
 - NOTIFYING THE DESIGN ENGINEER AND MUNICIPALITY 48 HOURS PRIOR TO THE START OF CONSTRUCTION TO ARRANGE FOR APPROPRIATE CONSTRUCTION OBSERVATION.
- THE CONTRACTOR IS RESPONSIBLE FOR PROVIDING THE ENGINEER WITH AS-BUILT CONDITIONS OF THE DESIGNATED IMPROVEMENTS IN ORDER THAT THE APPROPRIATE DRAWINGS CAN BE PREPARED. IF REQUIRED, ANY CHANGES TO THE DRAWINGS OR ADDITIONAL ITEMS MUST BE REPORTED TO THE ENGINEER AS WORK PROGRESSES.
- THE PRIME CONTRACTOR IS RESPONSIBLE FOR COORDINATING ALL CONSTRUCTION WITH OTHER CONTRACTORS INVOLVED WITH CONSTRUCTION OF THE PROPOSED DEVELOPMENT AND FOR REPORTING ANY ERRORS OR DISCREPANCIES BETWEEN THESE PLANS AND PLANS PREPARED BY OTHERS.
- ANY SANITARY SEWER, SANITARY SEWER SERVICES, WATER MAIN, WATER SERVICES, STORM SEWER, OR OTHER UTILITIES, WHICH ARE DAMAGED BY THE CONTRACTORS, SHALL BE REPAIRED TO THE OWNER'S SATISFACTION AT THE CONTRACTOR'S EXPENSE.
- CONTRACTOR IS RESPONSIBLE FOR SITE SAFETY DURING THE CONSTRUCTION OF IMPROVEMENTS.
- CONTRACTOR SHALL CONTACT THE LOCAL MUNICIPALITY PUBLIC WORKS DEPARTMENT A MINIMUM OF 48 HOURS BEFORE CONNECTING TO PUBLIC UTILITIES. CONTRACTOR TO VERIFY SIZE AND DEPTH OF EXISTING UTILITY SERVICES AND REPORT ANY DISCREPANCIES TO THE ENGINEER PRIOR TO CONNECTING.
- CONTRACTOR MUST CONTACT AND IS REQUIRED TO NOTIFY THE LOCAL MUNICIPALITY WATER UTILITY 48 HOURS IN ADVANCE OF CONNECTING TO THE PUBLIC UTILITY. WATER UTILITY OFFICE (PHONE): (262)691-0804. ** IF NO PERSON ANSWERS, PLEASE LEAVE A VOICEMAIL MESSAGE AT EXTENSION 6025. ALSO PRESS ZERO (0) AND LEAVE A MESSAGE WITH THE RECEPTIONIST.
- ALL WATER MAIN MUST BE GAPPED AT EVERY 2,000 FOOT INTERVAL. WATER MAIN MUST BE FILLED AND SAFE WATER TESTED PRIOR TO FILLING AND FLUSHING ANY ADDITIONAL 2,000 FOOT PIPE SEGMENTS, PER LOCAL MUNICIPALITY WATER & SEWER UTILITY WATER MAIN INSTALLATION SEQUENCE.
 - WATER MAIN INSTALLATION SEQUENCE:
 - INSTALL WATER MAIN - MUST LEAVE A GAP AT THE EXISTING MAIN.
 - FILL WATER MAIN (PRESSURE TEST THE WATER MAIN, CONTRACTOR OPTION)
 - OBTAIN A SAFE WATER SAMPLE
 - TAP SERVICES. TAPS MUST BE MADE UNDER SYSTEM PRESSURE
 - PRESSURE TEST MAIN
 - MAKE WET CONNECTION TO EXISTING WATER MAIN
 - CONNECTION WILL ALSO BE REQUIRED WHEN THE FOLLOWING CONDITIONS ARE MET: WATER MAIN INSTALLATION UP TO 2000' AND/OR 30 DAYS OF INACTIVITY OF WATER MAIN INSTALLATION, WHICH EVER COMES FIRST.
- ALL PRIVATE SANITARY BUILDING PIPE AND TUBING SHALL CONFORM TO SPS 384.30-2.
- ALL PRIVATE STORM BUILDING PIPE AND TUBING SHALL CONFORM TO SPS 384.30-3.
- ALL PRIVATE PIPE AND TUBING FOR WATER SERVICE SHALL CONFORM TO SPS 384.30-4.
- ALL PRIVATE STORM PIPE SHALL CONFORM TO SPS 382.40(8)(B)4.A.
- ALL PRIVATE PIPE SHALL BE INSTALLED PER SPS 382.40-8 INCLUDING AT LEAST 8' OF HORIZONTAL DISTANCE BETWEEN WATER PIPING AND SANITARY SEWER FROM CENTER OF PIPE TO CENTER OF PIPE AND 6' OF SEPARATION BETWEEN STORM SEWER AND WATER PIPING.
- ALL LOCATIONS WHERE STORM SEWER AND WATER MAIN ARE CROSSING AND LESS THAN 3 FEET OF VERTICAL/HORIZONTAL SEPARATION IS PROVIDED, WATER MAIN SHALL BE INSULATED PER STANDARD SPECIFICATIONS FOR SEWER AND WATER CONSTRUCTION IN WISCONSIN LATEST EDITION. INSULATION SHALL CREATE A "BOX" ENCLOSED THE TOP AND SIDES OF WATER MAIN.

JSD Professional Services, Inc.
 • Engineers • Surveyors • Planners

"BUILDING RELATIONSHIPS WITH A COMMITMENT TO CLIENT SATISFACTION THROUGH TRUST, QUALITY AND EXPERIENCE"

- CIVIL ENGINEERING
- SURVEYING & MAPPING
- CONSTRUCTION SERVICES
- WATER RESOURCES
- PLANNING & DEVELOPMENT
- TRANSPORTATION ENGINEERING
- STRUCTURAL ENGINEERING
- LANDSCAPE ARCHITECTURE

MADISON REGIONAL OFFICE
 161 HORIZON DRIVE, SUITE 101
 VERONA, WISCONSIN 53593
 608.848.5060 PHONE | 608.848.2255 FAX

MADISON | MILWAUKEE
 KENOSHA | APPLETON | WAUSAU

www.jsdinc.com

SERVICES PROVIDED TO:
LANCASTER PROPERTIES, INC.

2906 MARKETPLACE DR. STE. A
 MADISON, WI 53719

PROJECT:
APARTMENTS AT CROSS HILL DRIVE

PROJECT LOCATION:
 3601 CROSS HILL DR.
 MADISON, WI 53718

JSD PROJECT NO.: 17-7751

SEAL/SIGNATURE:

ALTHOUGH EVERY EFFORT HAS BEEN MADE IN PREPARING THESE PLANS AND CHECKING THEM FOR ACCURACY, THE CONTRACTOR AND SUBCONTRACTORS MUST CHECK ALL DETAIL AND DIMENSIONS OF THEIR TRADE AND BE RESPONSIBLE FOR THE SAME.

DESIGN:	JRK	03-22-17
DRAWN:	JRK	03-22-17
APPROVED:		
PLAN MODIFICATIONS:		DATE:
Landuse/UDC Submittal		04-19-17
Landuse/UDC Resubmittal		06-07-17

DIGGERS HOTLINE

Toll Free (800) 242-8511
 Milwaukee Area (414) 253-1181
 Hearing Impaired TDD (800) 542-2289
www.DiggersHotline.com

SHEET TITLE:
UTILITY PLAN

SHEET NUMBER:
C300

File: I:\2017\17751\DWG\17-7751_C300_UTILITY_PLAN.dwg User: mprznsk Plotfile: Jan 07, 2017 - 8:49am Xref's

THESE PLANS AND DESIGNS ARE COPYRIGHT PROTECTED AND MAY NOT BE USED IN WHOLE OR IN PART WITHOUT THE WRITTEN CONSENT OF JSD PROFESSIONAL SERVICES, INC.