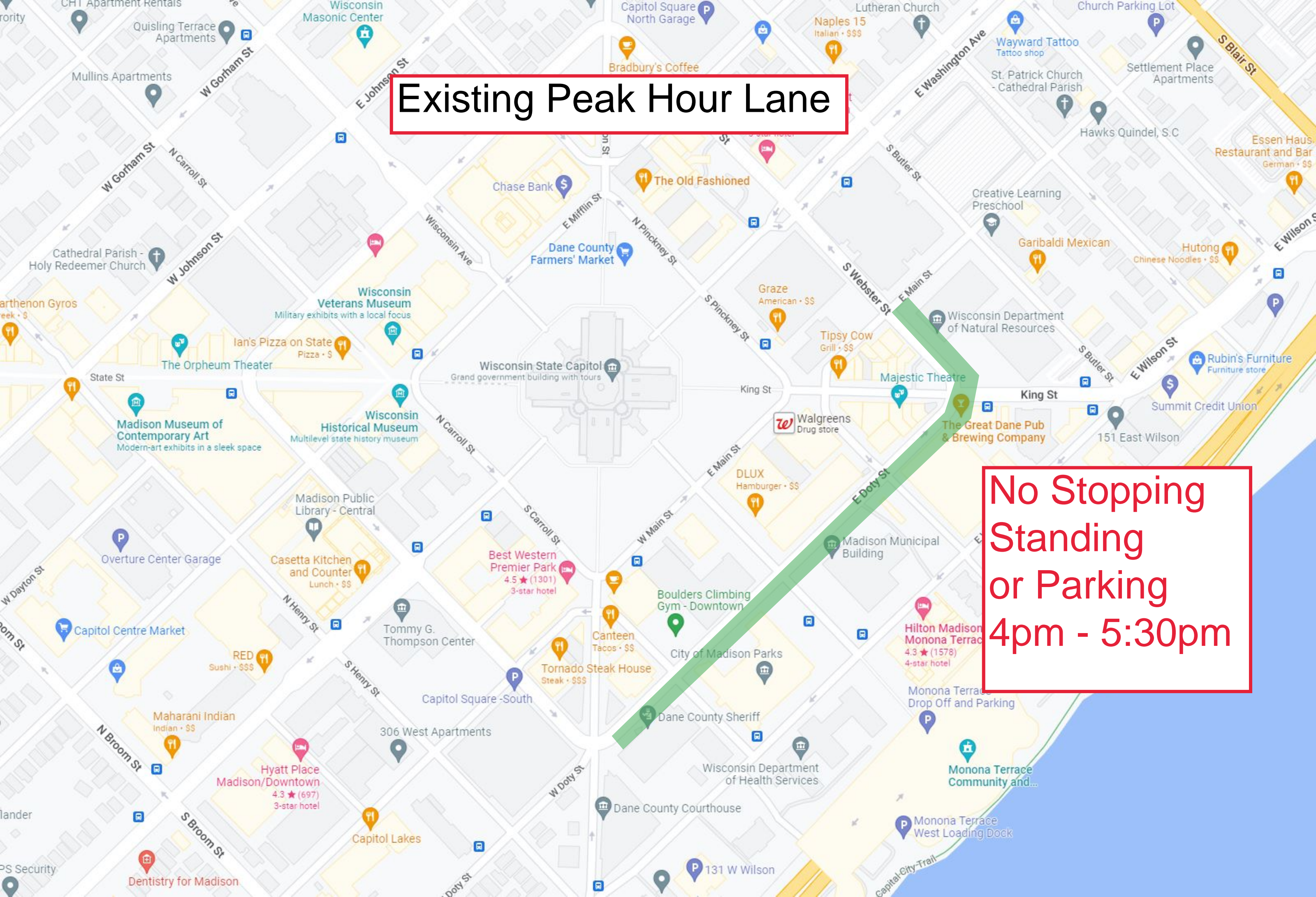


Existing Peak Hour Lane

No Stopping
Standing
or Parking
4pm - 5:30pm



Poor Peak-Hour Lane Utilization

Peak Hour Volumes Compared:
4/24/18 -- 1,214
6/09/22 -- 1,070
8/04/22 -- 1,363 (Concerts on Square)

230
17%

37
3%

655
48%

441
32%

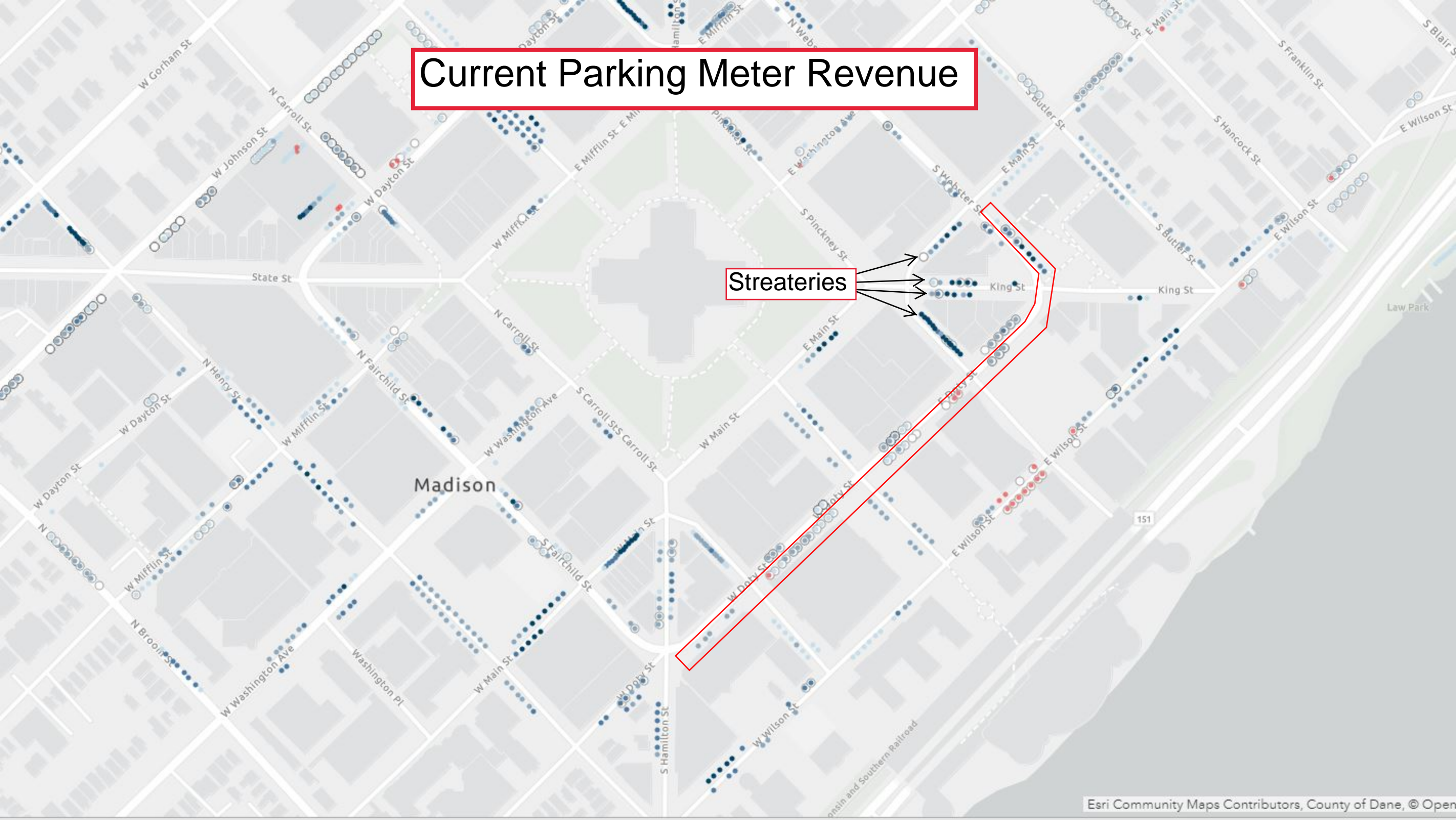
Peak-Hour Traffic Volumes

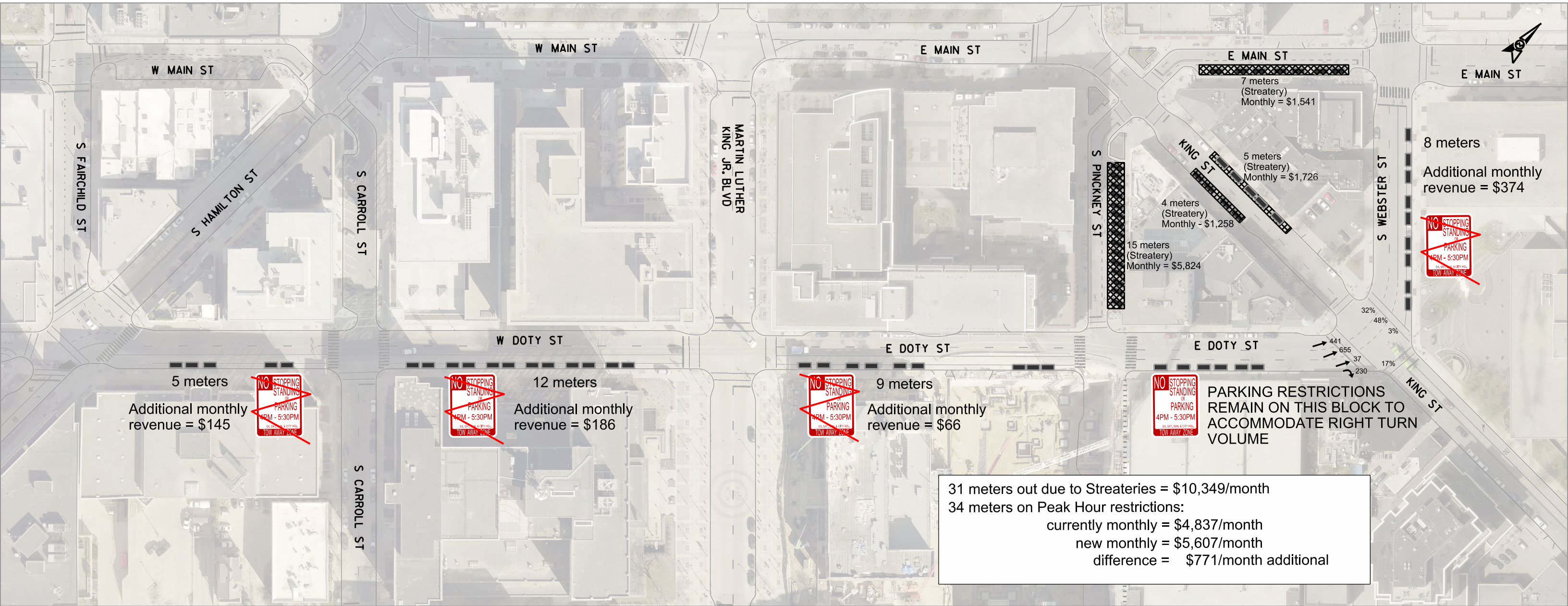


E Johnson Street = high peak-hour lane utilization

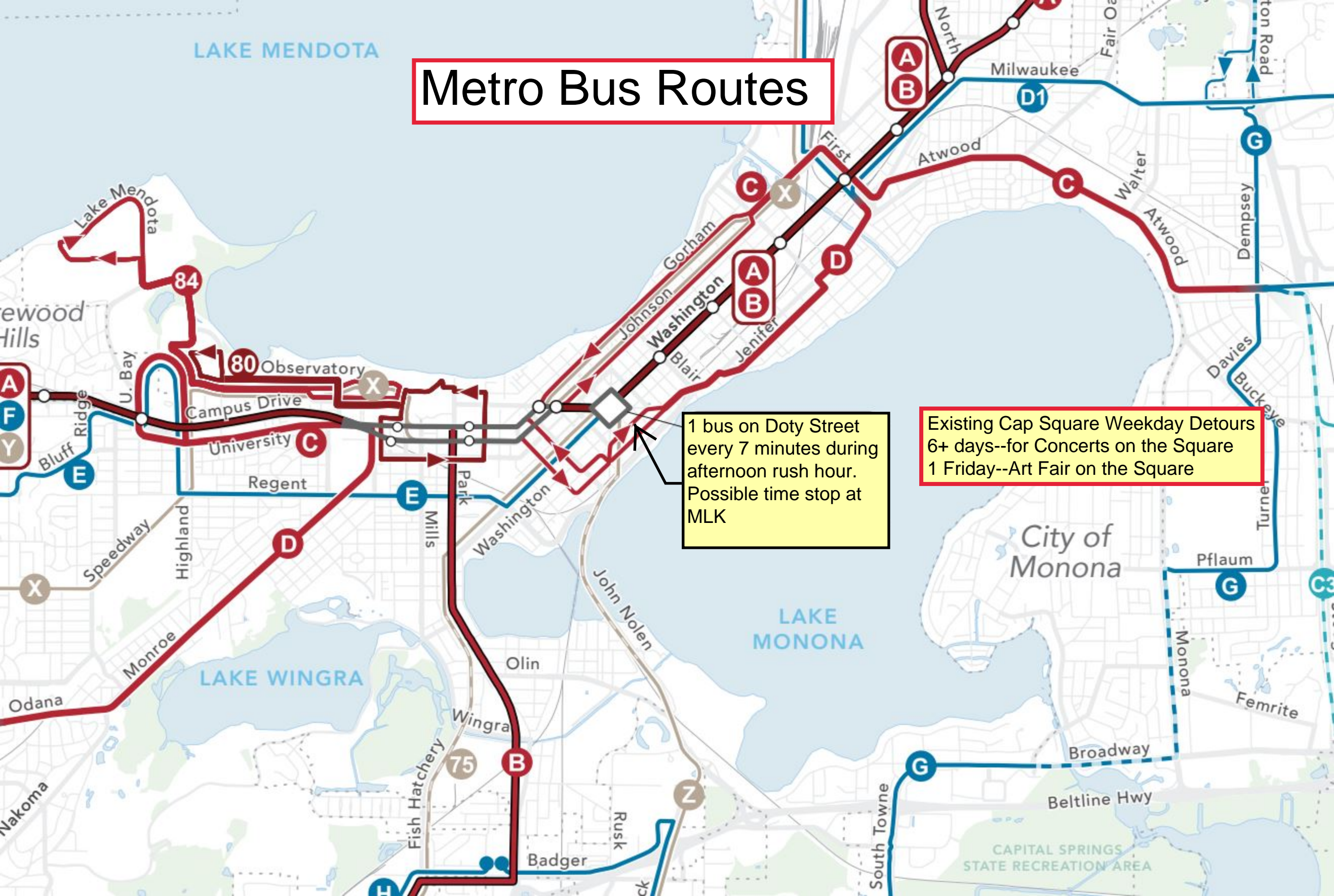
Current Parking Meter Revenue

Streeteries





Metro Bus Routes



1 bus on Doty Street every 7 minutes during afternoon rush hour. Possible time stop at MLK

Existing Cap Square Weekday Detours
6+ days--for Concerts on the Square
1 Friday--Art Fair on the Square