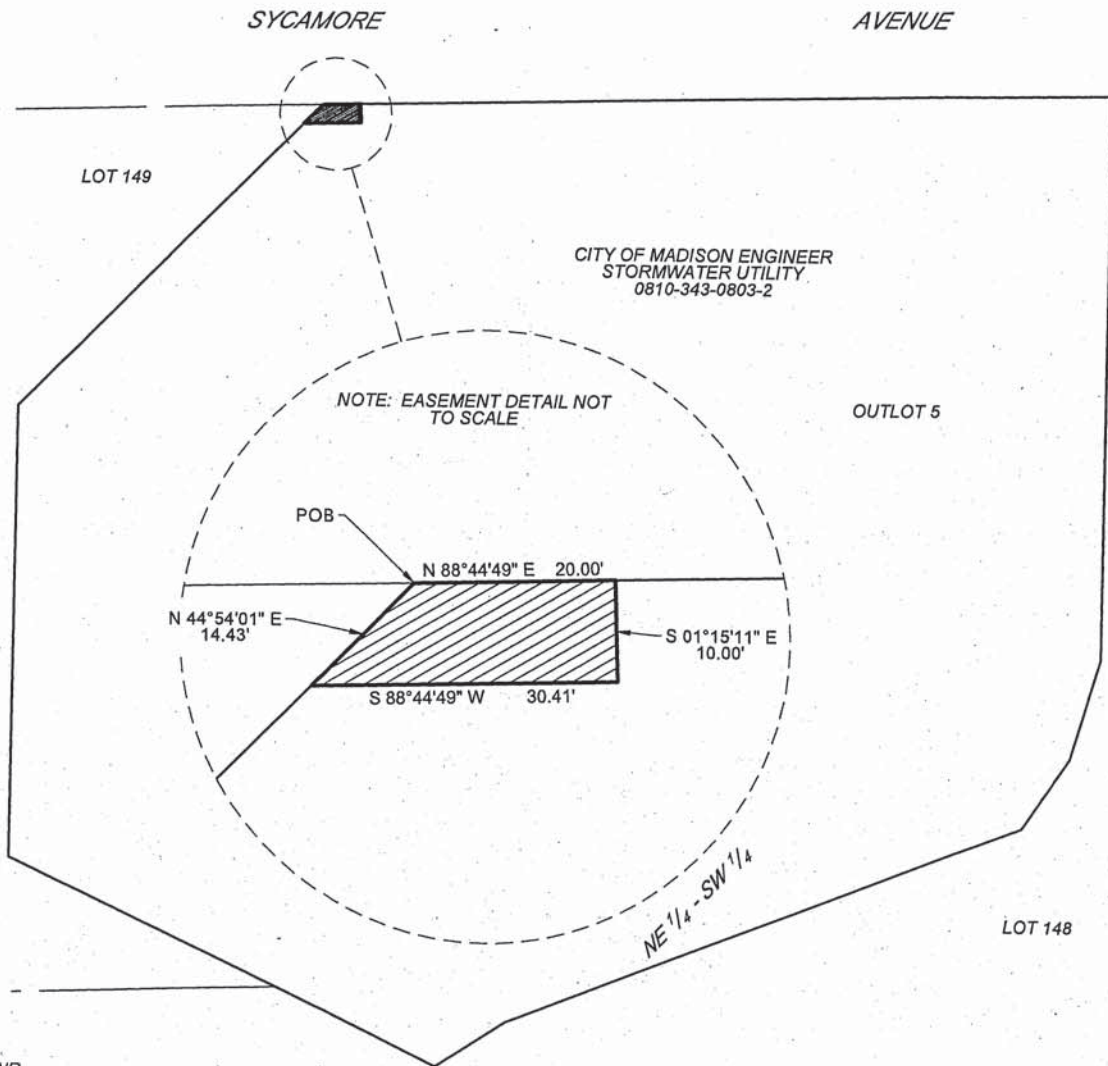



# EASEMENT DESCRIPTION MAP (EXHIBIT "A")

GRANTEE: MADISON GAS AND ELECTRIC COMPANY  
133 SOUTH BLAIR ST  
MADISON, WI 53788

GRANTOR: CITY OF MADISON ENGINEER  
STORMWATER UTILITY  
210 MLK JR BLVD, ROOM 115  
MADISON, WI 53703  
PARCEL NO. 0810-343-0803-2



### LEGEND

- SECTION LINE \_\_\_\_\_
- QUARTER LINE \_\_\_\_\_
- SIXTEENTH LINE \_\_\_\_\_
- RIGHT OF WAY LINE \_\_\_\_\_
- PROPERTY LINE \_\_\_\_\_
- MUNICIPAL BOUNDARY \_\_\_\_\_
- OWNER'S PROPERTY LINE \_\_\_\_\_
- REFERENCE LINE OF TRANSMISSION LINE EASEMENT \_\_\_\_\_
- TRANSMISSION LINE EASEMENT \_\_\_\_\_
- SECTION CORNER 

### MAP KEY



MG&E REGULATOR STATION 10 EASEMENT

TAX KEY 0810-343-0803-2 TOTAL AREA = 252 SF - 0.006 ACRES

CITY OF MADISON, DANE COUNTY



NORTH

50 25 0 50 100FT  
SCALE IN FEET



**AYRES ASSOCIATES**  
5201 EAST TERRACE DRIVE  
SUITE 200  
MADISON, WI 53718  
(608) 443-1200

NOTE: BEARINGS FOR THIS MAP ARE BASED ON THE SOUTH LINE OF SYCAMORE AVENUE, MEASURED TO BEAR N 88°44'49" E. DISTANCES ARE GROUND.

Drawn: MCF / Ayres Associates

Date: 5/24/2019

Scale: 1" = 100'

SHEET NUMBER 1

THIS DOCUMENT IS FOR THE USE OF MADISON GAS AND ELECTRIC COMPANY. MADISON GAS AND ELECTRIC COMPANY DISCLAIMS ALL WARRANTIES BOTH EXPRESS AND IMPLIED. USE BY ANYONE OTHER THAN MADISON GAS AND ELECTRIC COMPANY IS AT THEIR OWN RISK.

REVISIONS