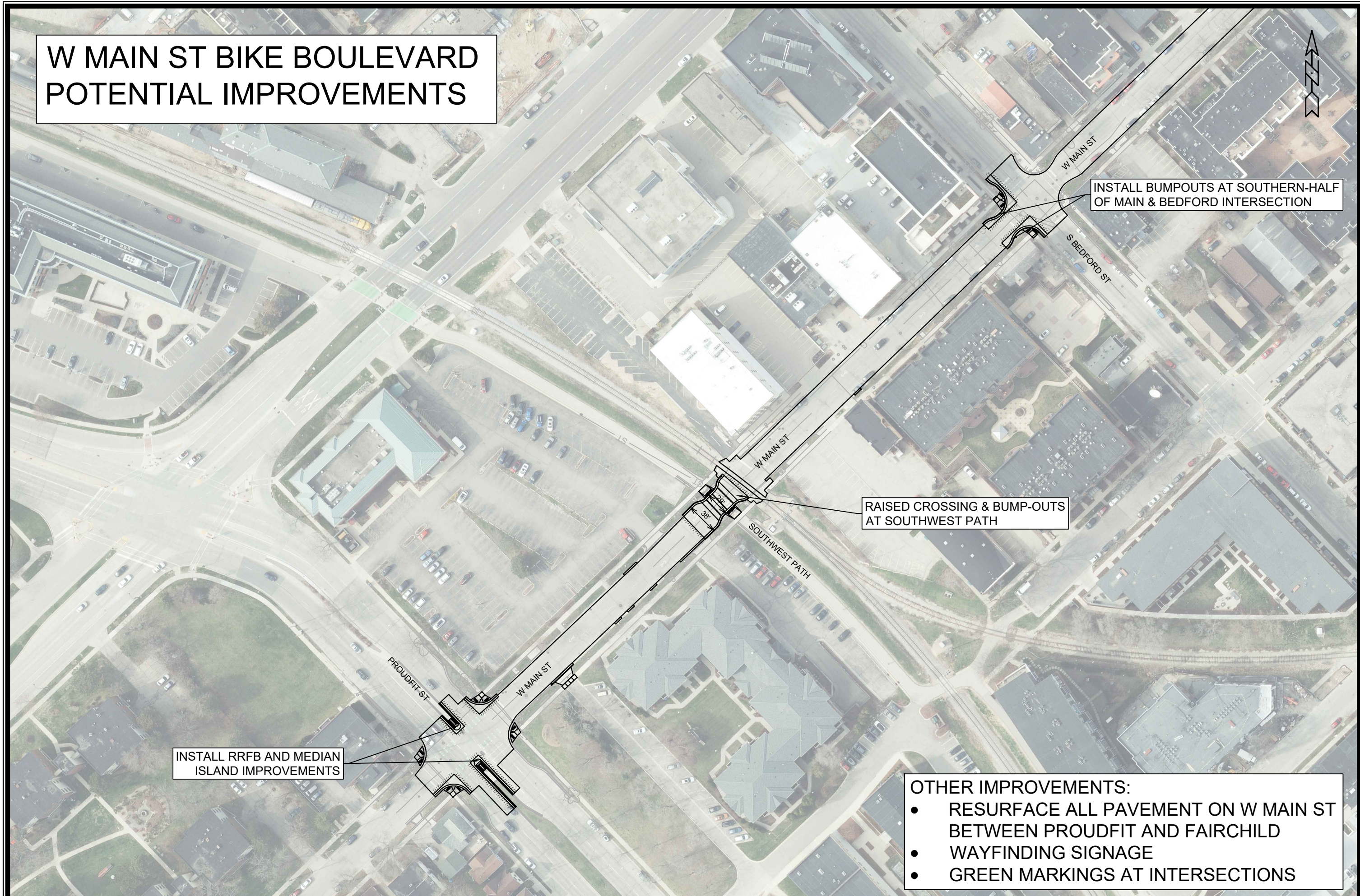


W MAIN ST BIKE BOULEVARD POTENTIAL IMPROVEMENTS



INSTALL RRFB AND MEDIAN ISLAND IMPROVEMENTS

RAISED CROSSING & BUMP-OUTS AT SOUTHWEST PATH


INSTALL BUMPOUTS AT SOUTHERN-HALF OF MAIN & BEDFORD INTERSECTION

- OTHER IMPROVEMENTS:**
- RESURFACE ALL PAVEMENT ON W MAIN ST BETWEEN PROUDFIT AND FAIRCHILD
 - WAYFINDING SIGNAGE
 - GREEN MARKINGS AT INTERSECTIONS

MARK	REVISION	DATE	BY
13015	7/12/2022	11:00 AM	EX
Designed By: AJC		Scale: 1:100	

13015
MADISON, WI
CONTRACT NO: 8642
M:\DESIGN\Projects\13015\CAD\Streets\13015EN-Street\Network.dwg

POTENTIAL SPOT IMPROVEMENTS
W MAIN ST BIKE BOULEVARD



13015
EX