
WATER UTILITY BOARD
CAPITAL PROJECTS MONTHLY REPORT



Pete Holmgren,
Design Engineer

July 26, 2022



Capital Projects Monthly Report



- PRESENTATION OVERVIEW:
 1. 2022 Capital Expenditures Status – As of May 31, 2022
 2. Major Capital Projects:
 - Unit Well 19 Fe, Mn, Radium Treatment Facility
 - Unit Well 15 PFAS Treatment Facility
 3. Monthly Project Highlight – Crowley Station Lakefront Porch

Capital Projects Monthly Report



2022 Capital Expenditures Status – As of May 31, 2022:

- **2022 Total: \$897,491** (increase of \$263,824 since April 30, 2022)
- Overview of April 2022 Capital Expenses:
 1. Pipelines: \$71,581
 - Helena, Russell, Jennifer WM replacement; Beltline Flex Ln relocations
 2. Facilities: \$24,236
 - Well 26 booster/repairs; Well 12 booster upgrade; Well 11 rehabilitation
 3. Fleet/Other: \$168,007
 - Meters Purchased; VFD/MCC upgrades; Hydrant repair/replacements

Capital Projects Monthly Report



Major Project Update: Well 19 Fe, Mn, Radium Treatment Facility

- Project Budget: \$9,088,000 (2022 Budget: \$891,000)
 - Status update: Preliminary Design
 - PIM #1 occurred 7/6/2022
 - Architectural Workshop #1 on 7/28/2022
 - Transition to Final Design expected September 2022
 - Preliminary Design Current Activities:
 - Topo & drone survey, soil borings; Bi-weekly design meetings

Capital Projects Monthly Report



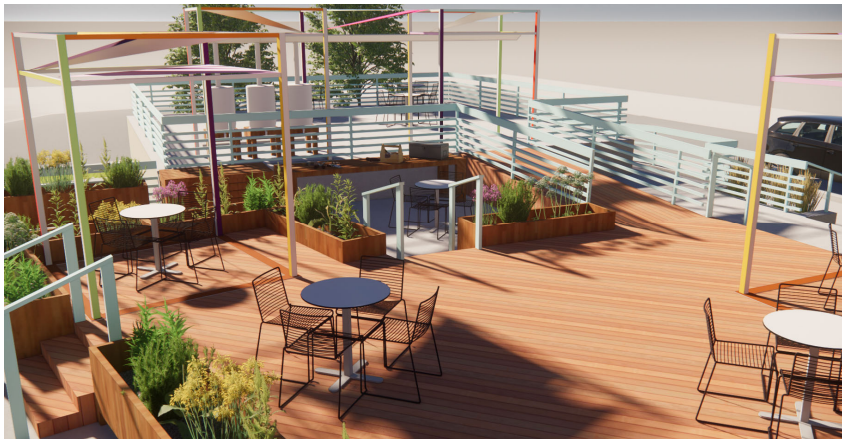
Major Project Update: Well 15 PFAS Treatment Facility

- Project Budget: \$5,943,000 (2022 Budget: \$425,000)
 - Status update: Preliminary Design
 - Public Info Meeting/Listening Session occurred on 6/30/22
 - Early July, well startup/run to collect samples for lab pilot testing
 - Preliminary Design Current Activities:
 - On-Site facility walkthrough for preliminary design scope review
 - Design criteria prioritization; Planning for ex. equipment removals

Capital Projects Monthly Report



Monthly Project Highlight – Crowley Station Lakefront Porch



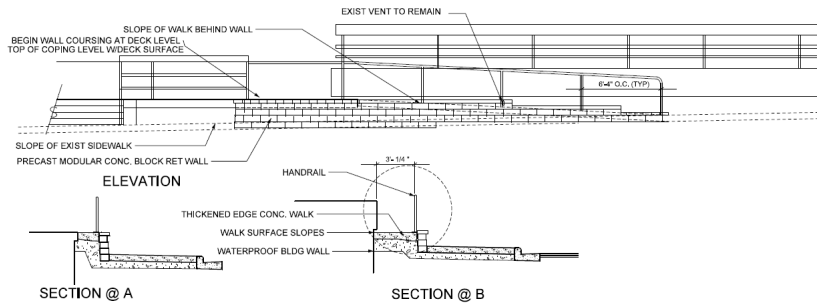
- Community Patio Improvements
 - Lakefront Porch Team
 - Community Gardens
 - MWU/Parks/Arts
- Public-Private Partnership Project
 - MWU: Railing/Ramp
 - Ken Saiki Arch: Design
 - Private: Patio Upgrades

Capital Projects Monthly Report



Monthly Project Highlight – Crowley Station Lakefront Porch

PROPOSED SLOPED CONCRETE WALK ACCESS



- MWU Contribution: \$60K via 2021 Budget Amendment
- Concept Design
- Railing Upgrades
- Ramp Construction
- Private Contribution: \$500K via fundraising



Questions / Comments?

Contact Information:

Pete Holmgren

pholmgren@madisonwater.org