

⑥ SITE SECTION THROUGH CATALINA PARKWAY AND F-2 BUILDING  
3/32" = 1'-0"



⑩ SITE SECTION THROUGH B-1 & E-4 BUILDINGS  
3/32" = 1'-0"

DECKER PROPERTIES,  
INC.

CATALINA CROSSING  
APARTMENTS

**PROGRESS DOCUMENTS**

These documents reflect progress and intent and may be subject to change, including additional detail. These are not final construction documents and should not be used for final bidding or construction-related purposes.

DATE OF ISSUANCE 6 APRIL, 2016

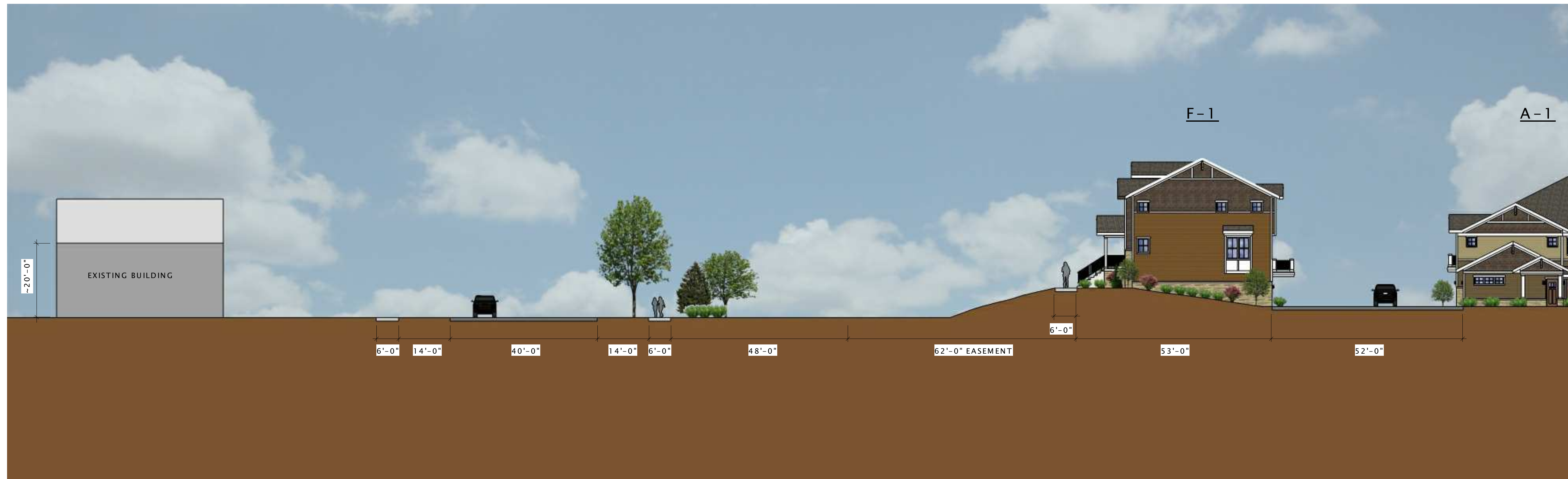
Mark	Revision Schedule	
	Description	Date

SHEET TITLE

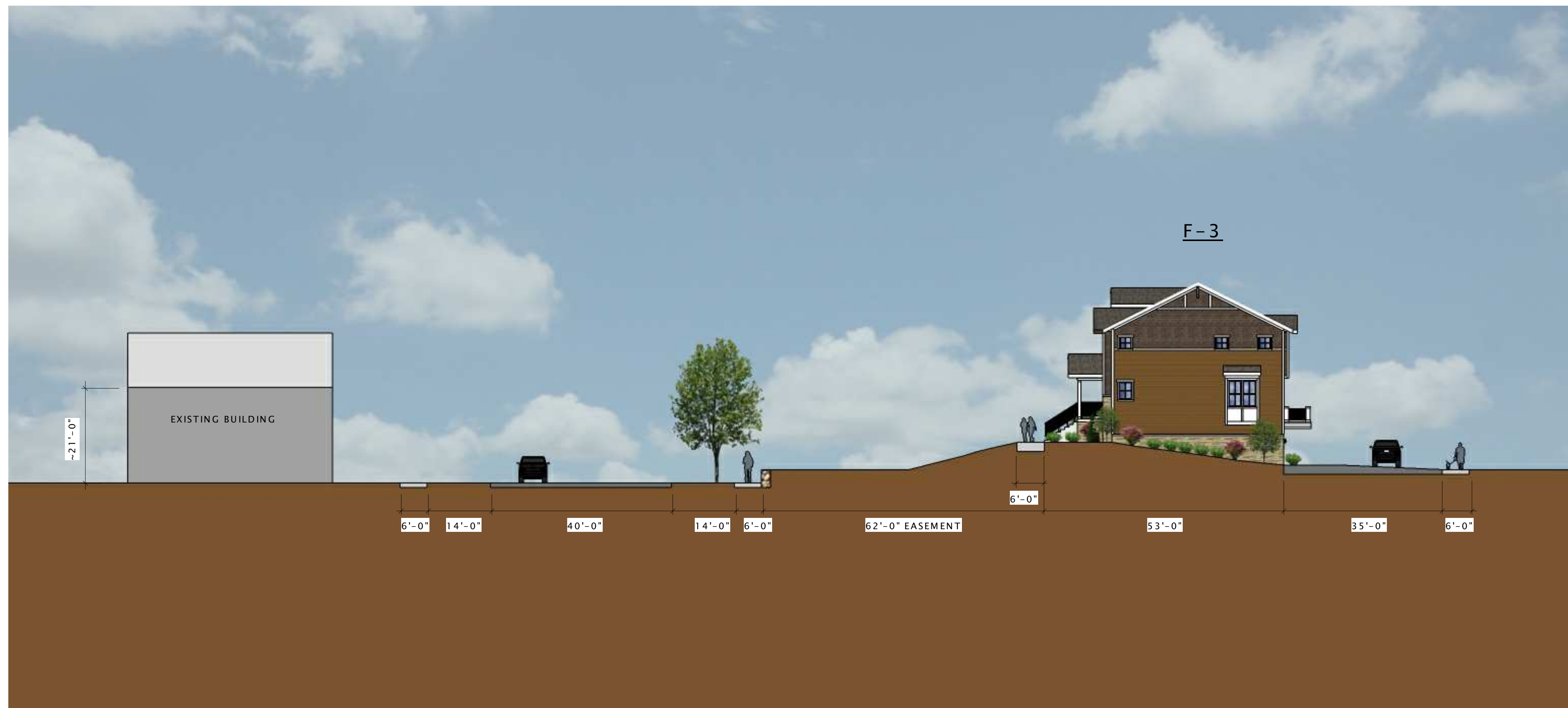
SITE SECTIONS

SHEET NUMBER

ASP-104



⑥ SITE SECTION THROUGH CATALINA PARKWAY AND F-1 BUILDING  
1/16" = 1'-0"



⑩ SECTION THROUGH CATALINA PARKWAY AND F-3 BUILDING  
1/16" = 1'-0"

DECKER PROPERTIES,  
INC.

CATALINA CROSSING  
APARTMENTS

**PROGRESS DOCUMENTS**

These documents reflect progress and intent and may be subject to change, including additional detail. These are not final construction documents and should not be used for final bidding or construction-related purposes.

DATE OF ISSUANCE 6 APRIL, 2016

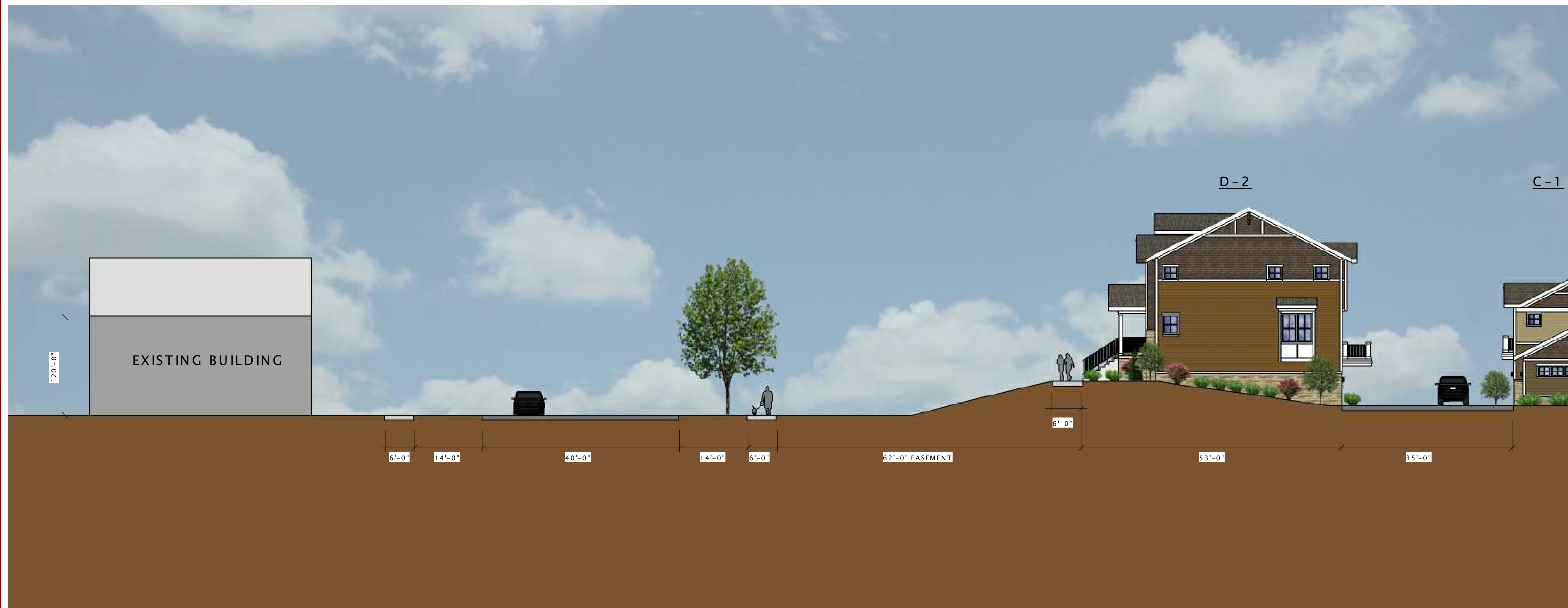
Revision Schedule		
Mark	Description	Date

SHEET TITLE

SITE SECTIONS

SHEET NUMBER

ASP-105



⑥ SITE SECTION THROUGH CATALINA PARKWAY AND D-2 BUILDING  
3/32" = 1'-0"

DECKER PROPERTIES,  
INC.

CATALINA CROSSING  
APARTMENTS

**PROGRESS DOCUMENTS**

These documents reflect progress and intent and may be subject to change, including additional detail. These are not final construction documents and should not be used for final bidding or construction-related purposes.

DATE OF ISSUANCE 6 APRIL, 2016

Revision Schedule		
Mark	Description	Date

SHEET TITLE

SITE SECTIONS

SHEET NUMBER

ASP-106