

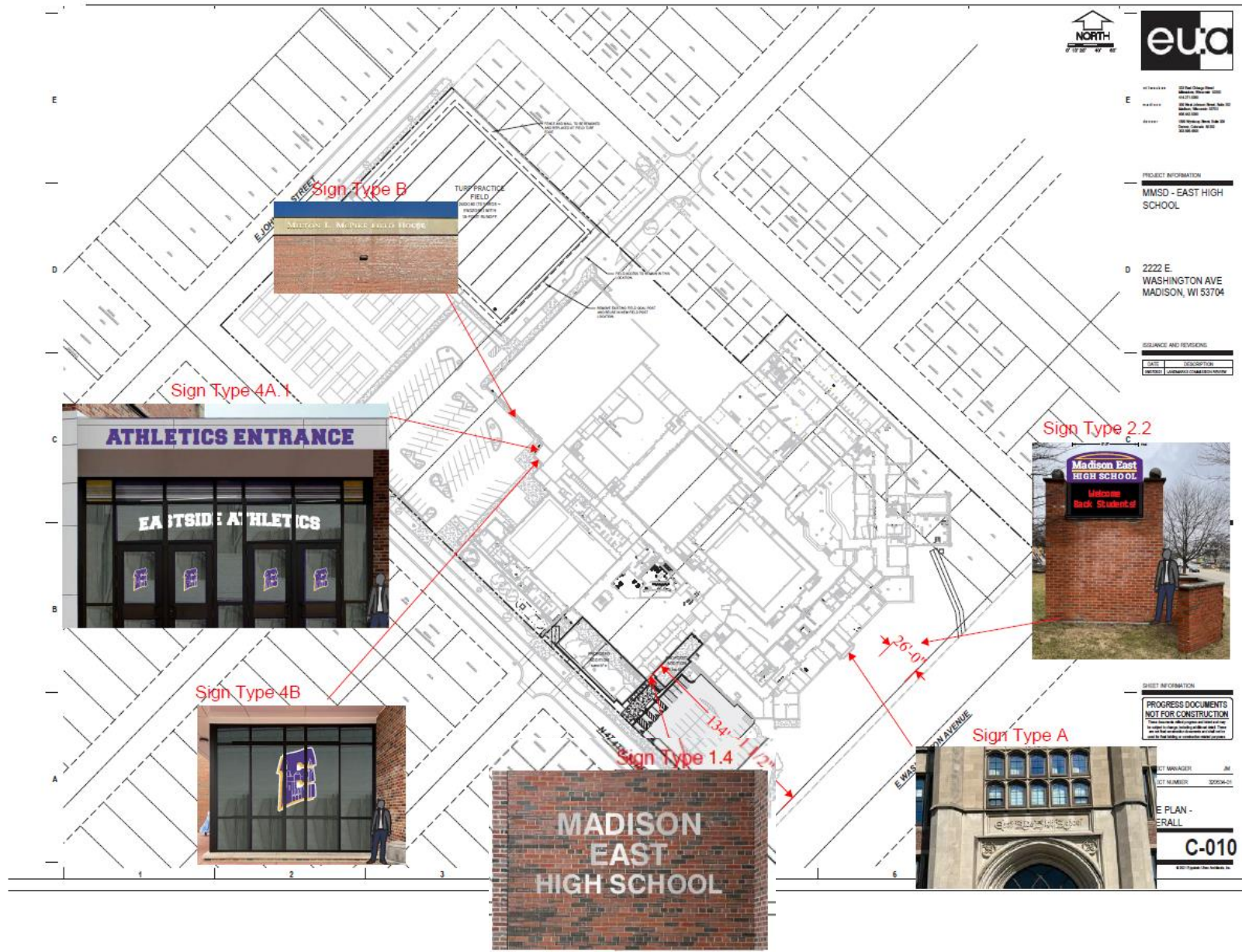
Madison Metropolitan
School District
Madison East High School
Comprehensive Design Review

Meeting of the City of Madison Urban Design Commission

March 27, 2024

Submitted by [Ryan Signs, Inc.](#)

Site Plan Overview



E
 222 E WASHINGTON AVE
 MADISON, WI 53704

PROJECT INFORMATION
 MMSD - EAST HIGH SCHOOL

D 2222 E WASHINGTON AVE
 MADISON, WI 53704

REVISIONS AND REVISIONS

DATE	DESCRIPTION
10/20/10	ISSUED FOR PERMIT REVIEW

SHEET INFORMATION
 PROGRESS DOCUMENTS
 NOT FOR CONSTRUCTION

PROJECT MANAGER JRM
PROJECT NUMBER 2009-01

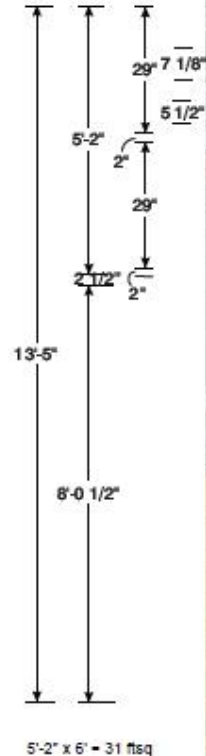
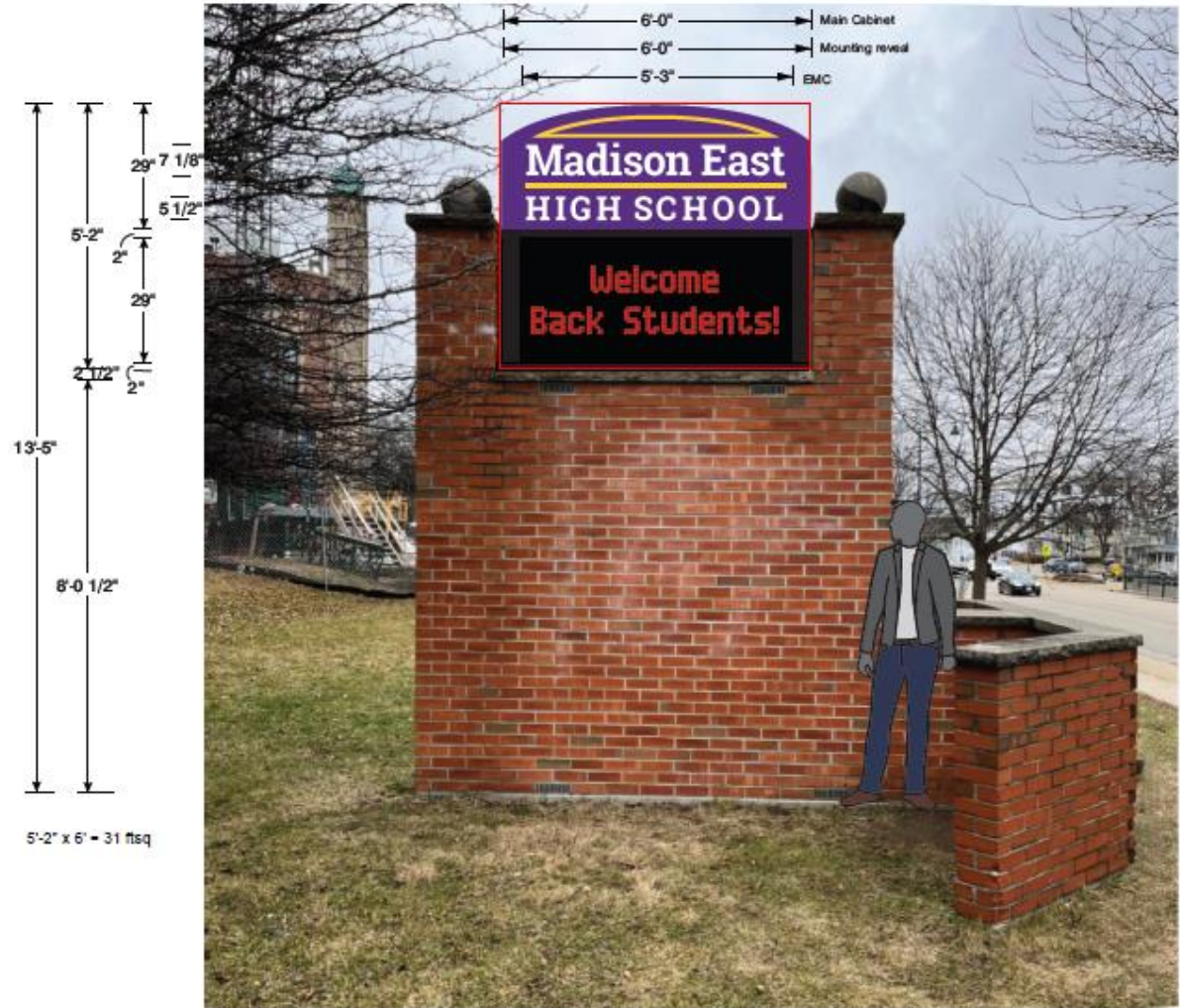
SHEET PLAN -
OVERALL

C-010

© 2010 E.A. Architects, Inc.

Retro-fit Existing Monument Sign

22 New Routed Header Cabinet w/ New Monochrome LED Message Center



5'-2" x 6" = 31 sqft



Color TBD	Color TBD	White Acrylic	Red LEDs
Wood Lead	Blue Led on Cornelex	Construction	
Control Panel & Message	LED Message	New 24" x 36" Aluminum Cabinet w/ New 24" LED 2074 x 5074	
10' x 10' x 10' 15'	10' x 10' LED	Red LED Message Center	Message Center
MPH Vane	Red LED Message Center	Message Message Center	Message Center
	Message Message Center	Message Center	Message Center

Print to Scale on 11" x 17" Paper

Ryan Signs, Inc.
 10000 W. 10th Street, Suite 100, Overland Park, KS 66204
 Phone: 913.421.4221 Fax: 913.421.4222
 Email: info@ryansigns.com Website: www.ryansigns.com

MMSD - EAST HIGH SCHOOL MONUMENT SIGN

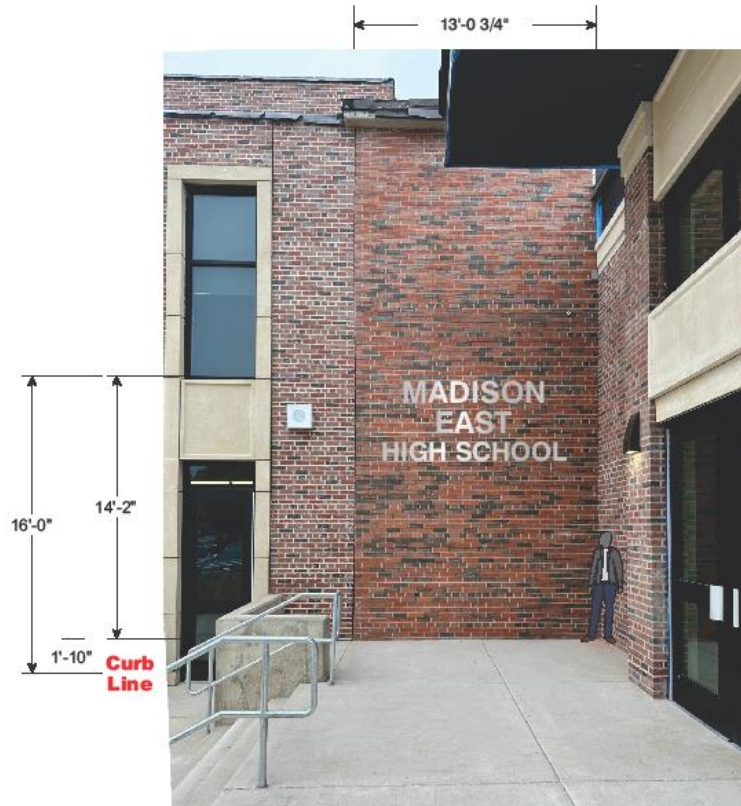
7641

Existing Memorial/Legacy Wall Sign

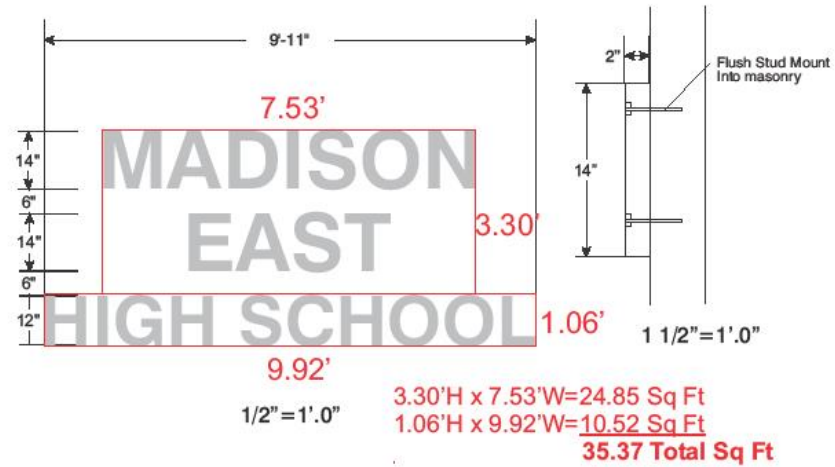


Proposed Wall Sign

1.4 East Elevation Area E1 - Fabricated Aluminum Letters



3/16" = 1'-0"

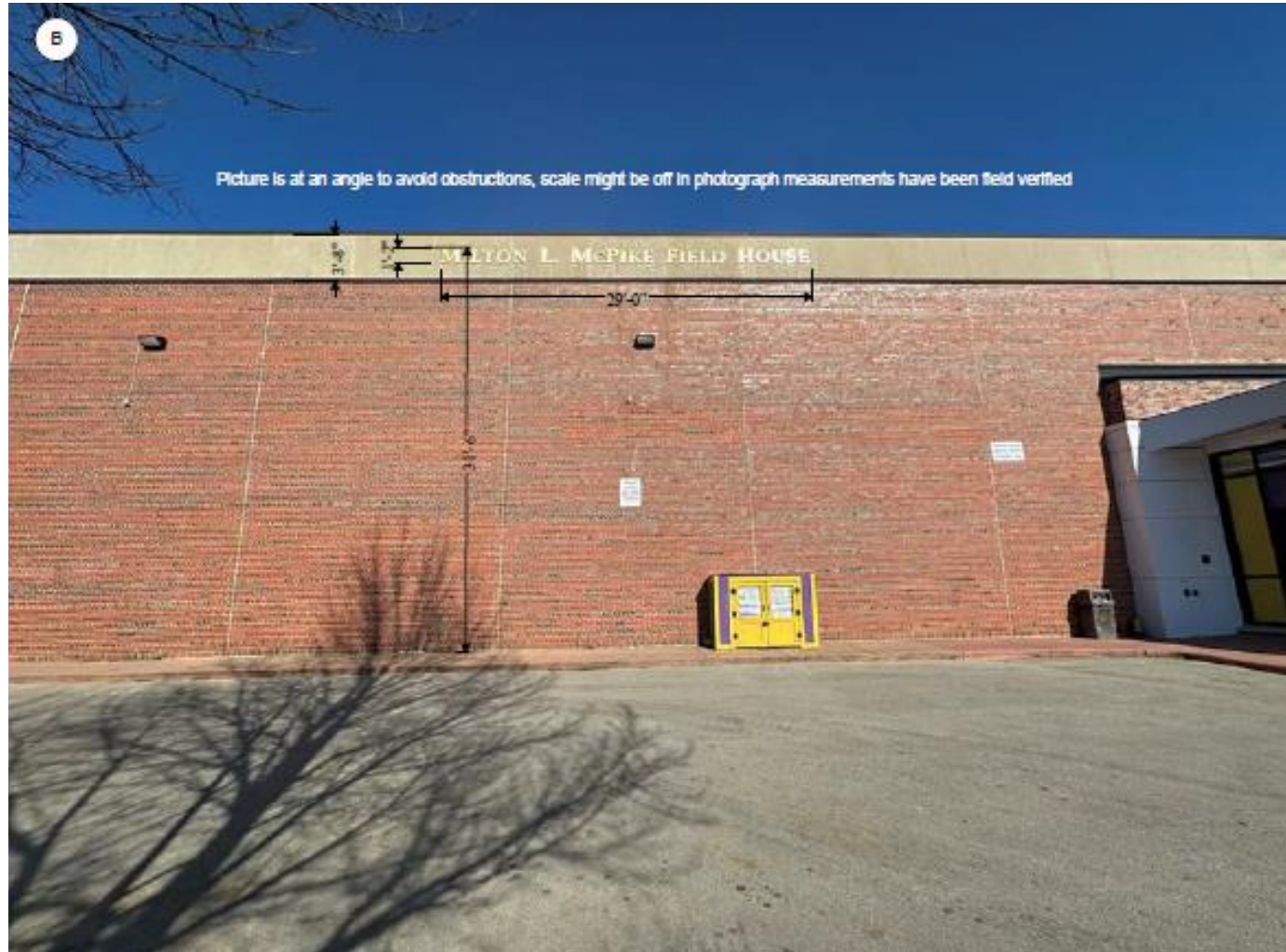


Print to Scale on 11" x 17" Paper

<input type="checkbox"/> MAP Brushed Aluminum Wind Load: 100 mph Corrosion Resistance: 20 years Withstand up to 75 MPH Winds	Identification, Compliance, Installation, Maintenance, Fabricate & Mount Letters Stud Mounted To Brick Masonry
---	--

Ryan Signs, Inc. 1000 West 10th Street, Suite 100, Madison, WI 53703 608-263-1234 www.ryan-signs.com	SCALE: VARIOUS DATE: 8-20-20 PROJECT: JHF - MADISON EAST HIGH SCHOOL - EXTERIOR SIGNS DRAWN BY: JHF CHECKED BY: JHF	APPROVED: [Signature] DATE: 8-20-20 DRAWING NO.: 7438
--	---	---

Existing Wall Sign



Proposed Wall Sign & Window Graphics

4A.1 Athletic Entrance - FCO Canopy Letters & White Die Cut Vinyl Copy to Transom & Doors
 18.69 Sq Ft - FCO Letters

207"
 151"

13"
 105.8"
 16'-0" Height to Grade
 19"

3/8" Thick FCO Letters

Print to Scale on 11" x 17" Paper

Pantone 266C Wind Load Calculated in accordance with ASCE 7-10 W/ Wind 15 mph	Digital Print Installation Considerations FCA	Construction: FCO Letters Flush Mounted to Canopy Panels Also Mounted to applied Vinyl Copy & Graphics.
--	---	--

Ryan Signs, Inc. 10000 W. 10th Ave. Suite 100 Golden, CO 80401 Phone: 303.440.7777 Fax: 303.440.7778 Email: info@ryansigns.com Website: www.ryansigns.com	7641
--	------

Proposed Window Graphics

4B Athletic Entrance - Applied Vinyl Graphic to Adjacent Windows



Digital Print		
Wind Load:	Illustration Compliance:	Graphics:
Compliance Statement:	Statement:	Window Applied Vinyl
Withstand up to 75	N/A	Graphics.
mph Winds.		

Print to Scale on 11" x 17" Paper

Byron Signs, Inc.	DATE: 08/20/20	PROJECT:
2225 W. 10th Street, Suite 100, Lincoln, NE 68502	PHONE: 402.478.8888	PROJECT:
MMSD - EAST HIGH SCHOOL - ADDITIONS		
		7641