

1617 Sherman Ave

Madison, WI

October 26, 2022 – Urban Design Informational Meeting



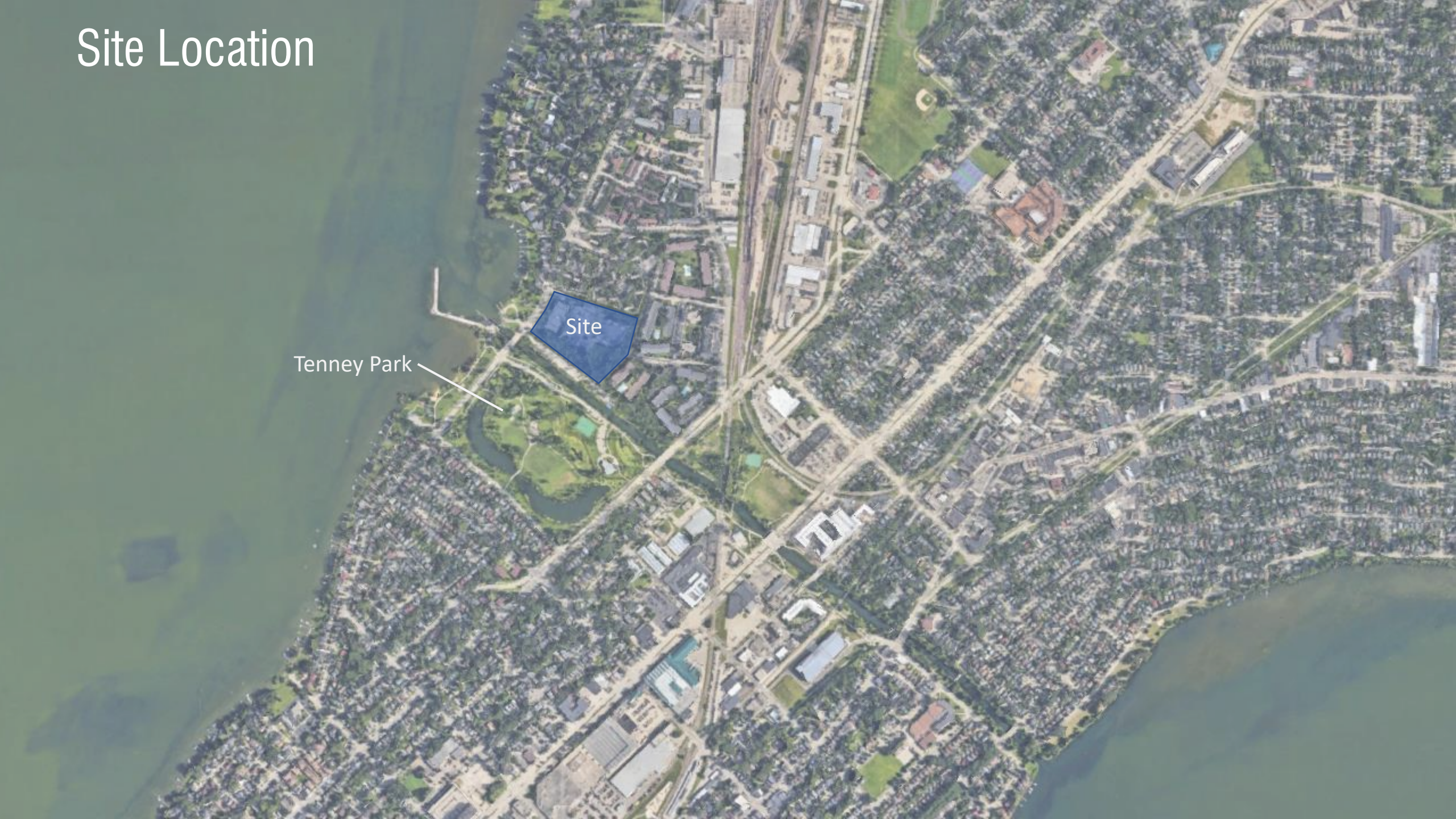
 vermillion
development

**Potter
Lawson**

Success by Design

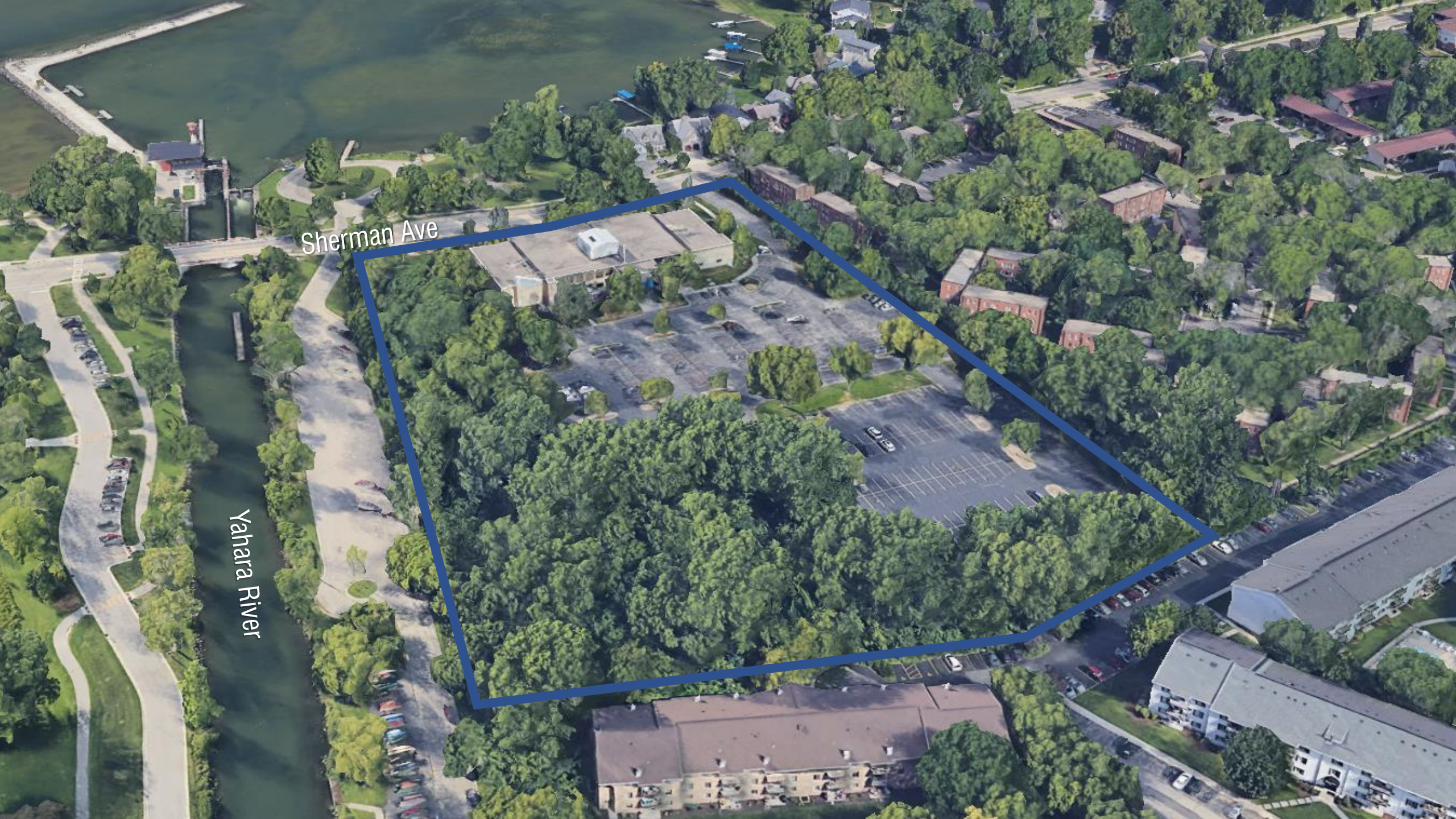
© 2022 Potter Lawson All Rights Reserved

Site Location



Site

Tenney Park



Sherman Ave

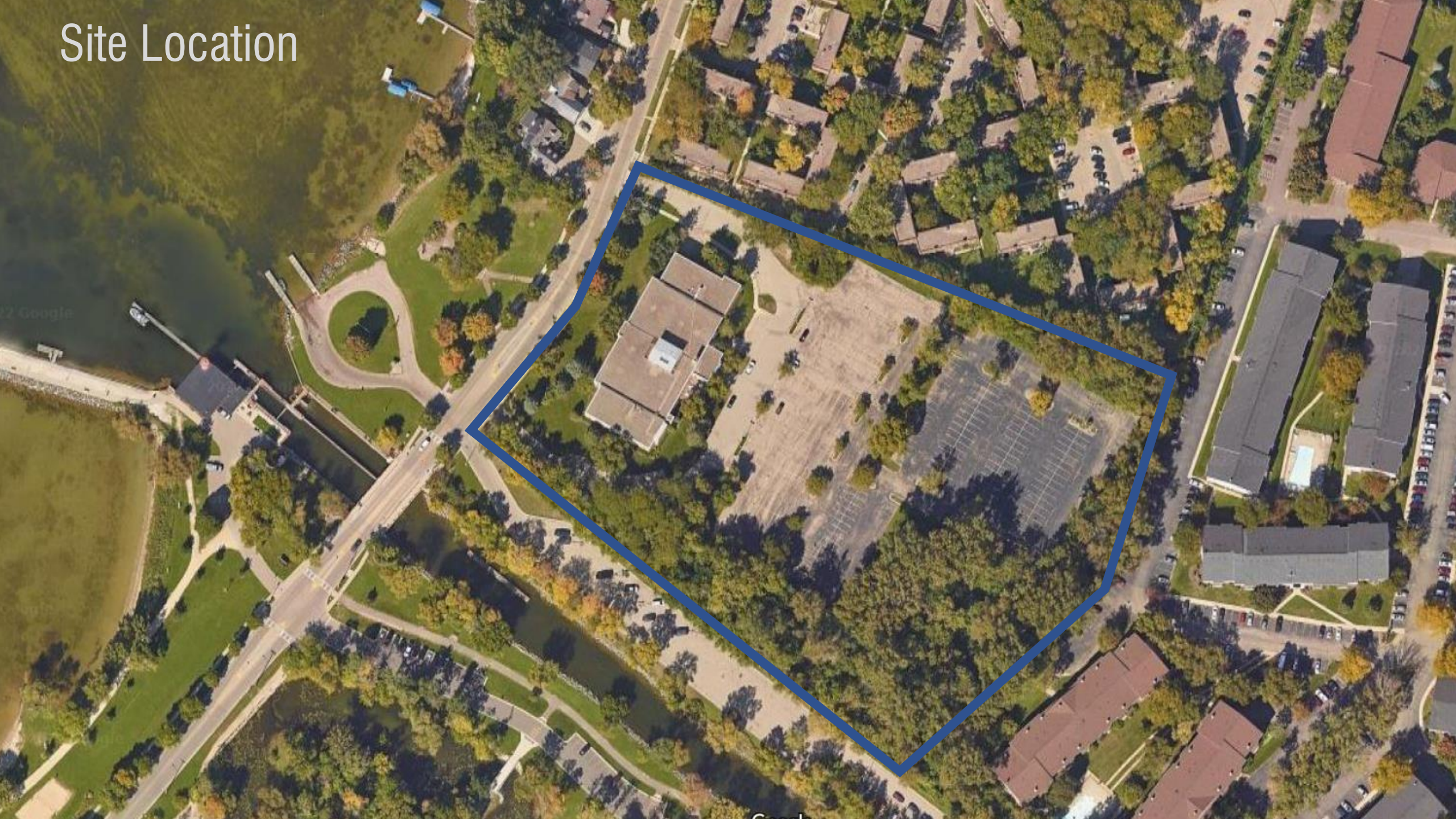
Yahara River

Project Information

- 4 Total Buildings
- Vary in Height 3, 4, 6 Stories
- 445 Apartment Units
 - 1, 2, 3 Bedrooms & Studios
- 587 Parking Stalls (1.32 Stall /Unit)
 - 257 Surface Stalls
 - 330 Below Grade Stalls
 - 12 EV Charging Stations, 59 EV Ready
- 494 Bike Stalls
 - 440 Covered Stalls
- 29,000 sf Green Roof Area
- 2 Roof Top Amenity Spaces



Site Location





Sherman Ave

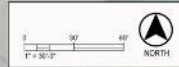
Yahara River

A

B.1

B.2

C



Sherman Ave Looking Northeast



From Sherman Ave Boat Launch



Looking west towards the lake



Looking Southwest towards Tenney Park



Ground view looking towards Tenney Park



Ground view between buildings B and C



View along Sherman Avenue with maple trees



View along Sherman Avenue without maple trees



Partial End Elevation of Building A



Asphalt Shingles
Charcoal



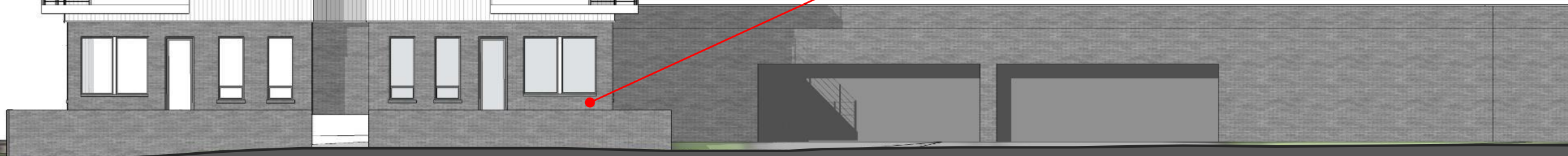
Cement Board
V-Groove
Grey



Cement Fiber
Board Vertical
V-Groove
White



Charcoal
Brick



Partial End Elevation of Building B



Asphalt Shingles
Charcoal



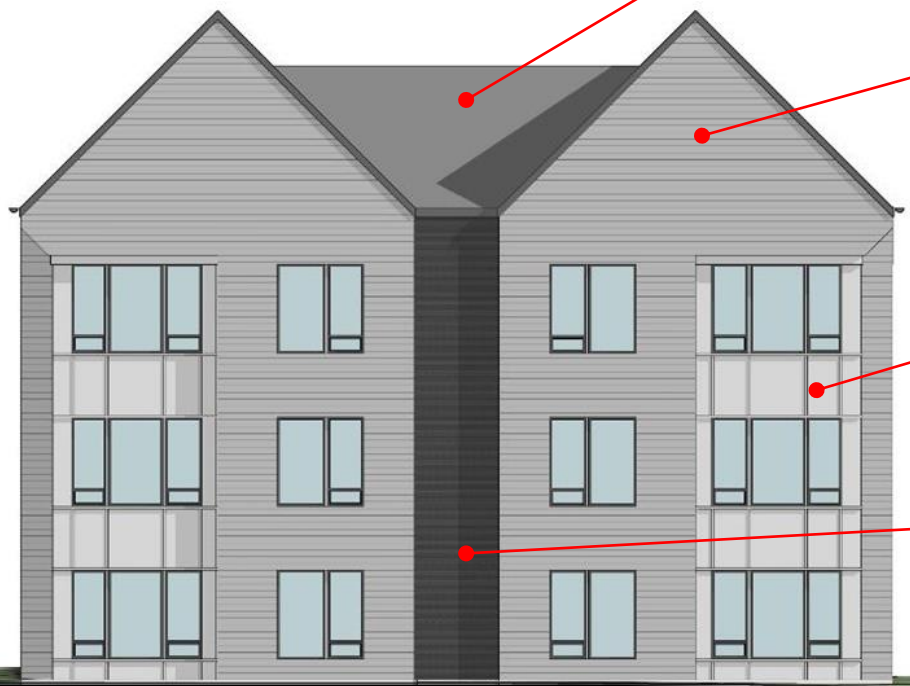
Cement Board
Plank Siding
Iron Grey



Hardie Board and
Batten Siding
Arctic White



Architectural Louvers
Dark Grey



Appendix

October 26, 2022 – UDC Informational Meeting

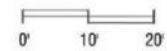




1
12

WEST ELEVATION BLDG A

1" = 20'-0"





1
13

SOUTH ELEVATION BLDG A

1" = 20'-0"



SHINGLE ROOF-DARK GREY

FIBER CEMENT SIDING
ACCENT GREY - VERTICAL ORIENTATION

LEVEL 04
+33' - 6"

LEVEL 03
+22' - 4"

LEVEL 02
+11' - 2"

LEVEL 01
+0' - 0"

MASONRY

1 SOUTH ELEVATION BLDG C
11 1" = 20'-0"



FIBER CEMENT SIDING - WHITE
BOARD AND BATTEN

SHINGLE ROOF - DRAK GREY

FIBER CEMENT TRIM BOARD
-WHITE

FIBER CEMENT SIDING
ACCENT GREY - VERTICAL ORIENTATION

LEVEL 04
+33' - 6"

LEVEL 03
+22' - 4"

LEVEL 02
+11' - 2"

LEVEL 01
+0' - 0"

MASONRY- CHARCOAL

2 NORTH ELEVATION BLDG C
11 1" = 20'-0"

BUILDING C ELEVATIONS
1617 SHERMAN AVE - 2022.21.00
October 10, 2022

