

August 5, 2015

Mr. Al Martin, Urban Design Commission
Department of Planning & Community Development
City of Madison
215 Martin Luther King Jr. Blvd.
Madison, WI 53701

Re: Letter of Intent
Hawthorne Elementary School
3344 Concord Ave, Madison, WI
PRA Project No. 140248-04

Dear Mr. Martin:

The following re-submittal is our request for an Initial/Final Approval presentation to the Urban Design Commission on August 12th, 2015.

On July 29th as representative of the Madison Metropolitan School District I presented the referenced project to the Commission, and addressed comments and feedback for which the Commission voted for Referral of the project.

As a result we are addressing the following items:

- Daylighting in cafeteria
- The design has been revised since presented; the gymnasium and classrooms have been reconfigured
 - o Classrooms are facing south, allowing natural light, with potential future PV panels
 - o Gymnasium is closer to property line where adjacent property is the truck circulation area of bakery
- Gymnasium incorporates solar tube lighting in the roof

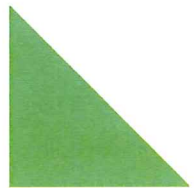
The attached materials represent the refinements we have made to accommodate the comments of the Commission.

Please contact me with any questions or for additional information that you request.

Best regards,



Steven A. Kieckhafer, AIA
Architect



July 22, 2015

Mr. Al Martin, Urban Design Commission
Department of Planning & Community Development
City of Madison
215 Martin Luther King Jr. Blvd.
Madison, WI 53701

Re: Letter of Intent
Hawthorne Elementary School
3344 Concord Ave, Madison, WI
PRA Project No. 140248-04

Dear Mr. Martin:

The following submittal is our request for an Initial/Final Approval presentation to the Urban Design Commission on July 29th, 2015.

Organizational Structure:

Owner:	Madison Metropolitan School District 545 W Dayton Street Madison, WI 53703 Contact: Rick Hopke rhopke@madison.k12.wi.us	Architect:	Plunkett Raysich Architects, LLP 2310 Crossroads Dr., Ste. 2000 Madison, WI 53718 Contact: Steve Kieckhafer SKieckhafer@prarch.com
Site/Civil:	Snyder & Associates 5010 Voges Road Madison, WI 53718 Contact: Brian Biwer bbiwer@snyder-associates.com	Landscape:	Ziegler Design 4797 Capital View Dr Middleton, WI 53562 Contact: Steve Ziegler steve@zdainc.com
Lighting:	KJWW Engineering 802 West Broadway Madison, WI 53713 Contact: Scott Hole holeless@kjww.com		

209 south water street milwaukee, wisconsin 53204 414 359 3060
2310 crossroads drive suite 2000 madison, wisconsin 53718 608 240 9900
1613 fruitville road suite 3 sarasota, florida 34236 941 348 3618

intelligent designs. inspired results. | www.prarch.com

Partners: Michael P. Brush, Martin P. Choren, Gregg R. Golden, Mark C. Herr, John J. Holz, Nicholas D. Kent,
Steven A. Kieckhafer, Scott A. Kramer, David J. Raysich, Michael H. Scherbel, Michael J. Sobczak

Introduction:

The Madison Metropolitan School District developed a plan to present to the tax payers of the Madison Metropolitan School District that would update existing school facilities with the following categories; accommodate student capacity, handicap accessibility within buildings and safe/secure environment. The plan that was developed affects additions/renovations and infrastructure upgrades to 16 school buildings for a total of \$39 Million dollars. That plan, accepted by the School Board to take to referendum, went to vote on April 7, 2015, and was successful with 82% of approval.

Project Description:

The proposed addition is for a new classroom space, Art room and Music room, as well as new gymnasium space. Adding the classroom space will not increase the capacity of the building, but will alleviate the existing overcrowded classrooms spaces. The current cafeteria space will be relocated to the existing gymnasium with renovation for a new kitchen, then the current cafeteria will be renovated to new classroom space.

Building Elements

An addition to the building will be constructed on the west side with exterior face brick and metal panels. The architecture will be complementary to the existing building by incorporating similar design elements and materials that are part of the existing building. Windows and entrances will be aluminum that will match existing finishes.

Site Development Statistics

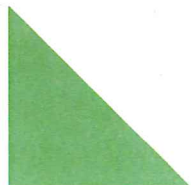
Lot Area	~9.22 acres
Current building Gross Floor Area	47,875 s.f.
Proposed addition of Gross Floor Area	<u>11,525 s.f.</u>
New total Gross Floor Area	59,400.f.

Vehicle Parking

On-site surface Parking 75 spaces 8 accessible

Bike Parking

Bike Storage available to students, ~40 spaces



Moped Parking

Moped parking not provided

Project Schedule:

This project is anticipated to start construction in September, 2015 with completion scheduled for early 2016.

City Planning, Urban Design (UDC), Alderperson and Neighborhoods:

The following is a list of dates of which meetings were held to discuss the proposed project

February 23, 2015- City Zoning to provide notification of District progressing to referendum

April 14-June7, 2015- Community/Parents to review project

June 9, 2015- City Zoning and UDC

June 25, 2015- DAT to present project

July 22, 2015 - Alder and Neighborhood notification

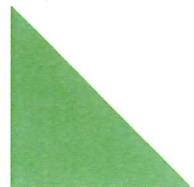
July 29, 2015 - UDC, Initial/Final Approval

Estimated Project Costs:

The project costs are estimated to be \$2,480,000

Public Subsidy:

This project will be funded totally with public bonds issued to the District through the approval of the successful referendum vote.



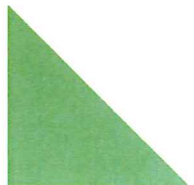
Please contact us with any questions or for additional information that you request.

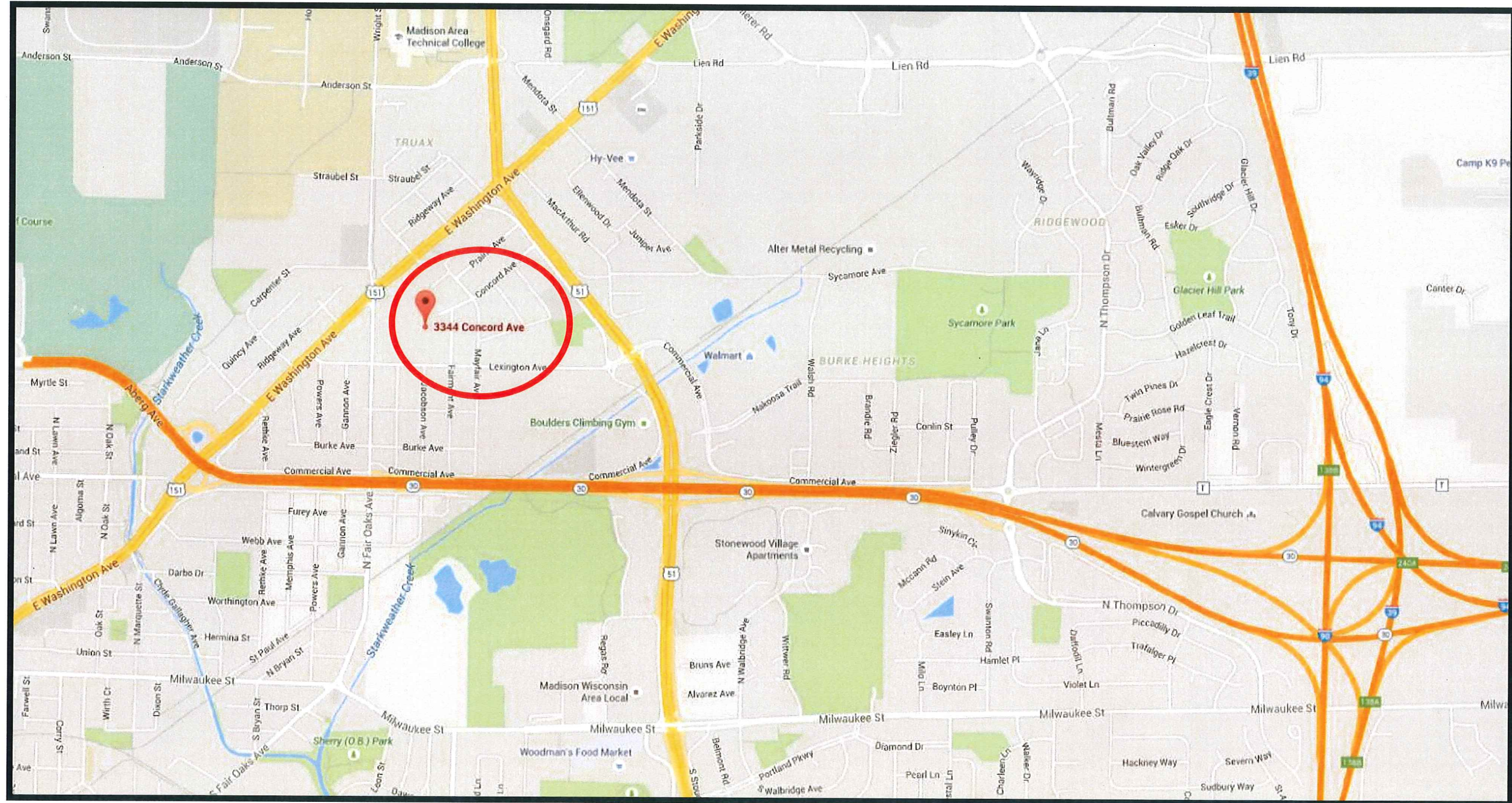
Thank you for your time in reviewing our proposal.

Best regards,



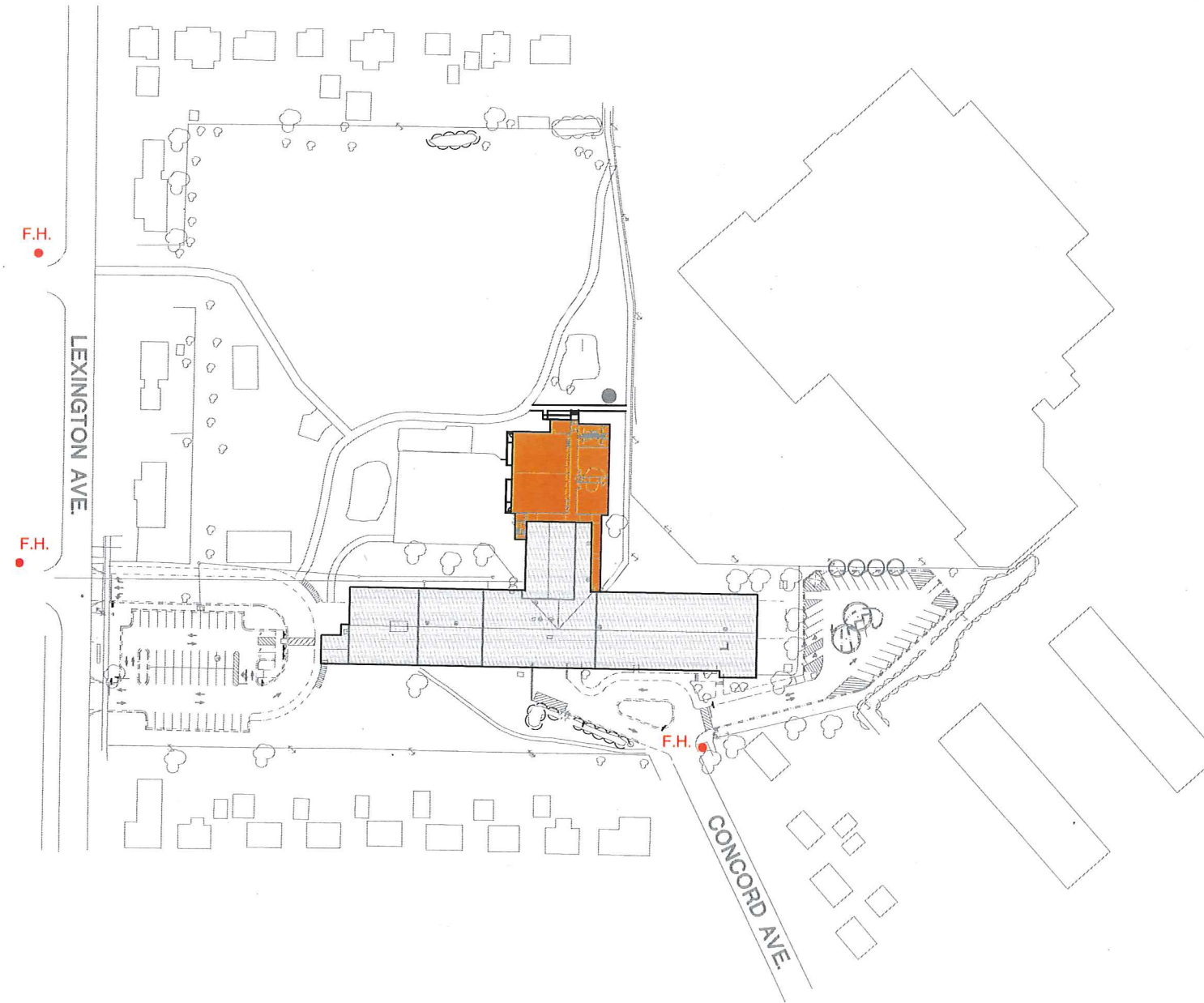
Steven A. Kieckhafer, AIA
Architect

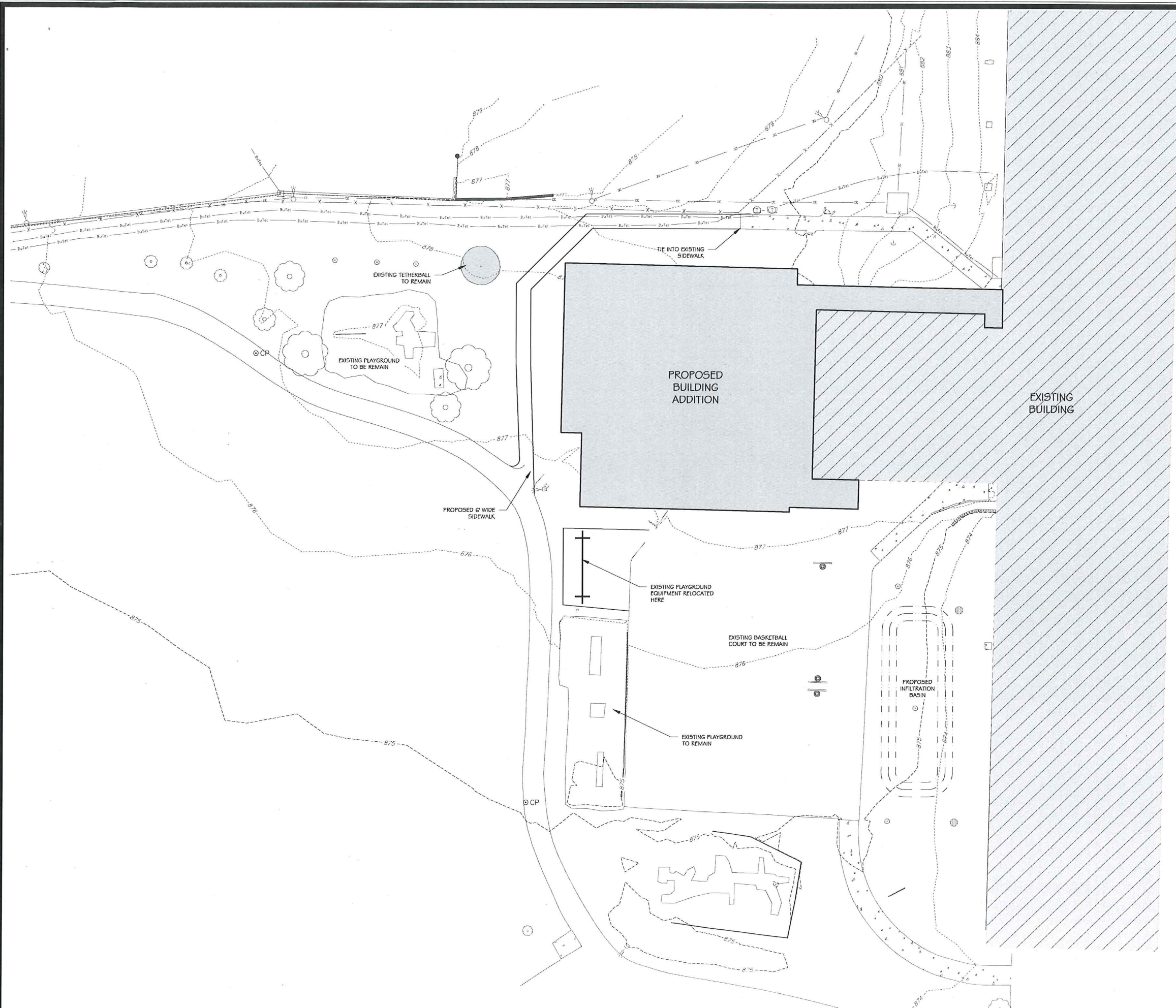




Location Map







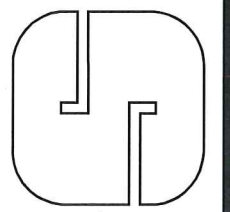
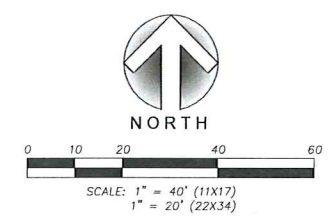

 TO OBTAIN LOCATION OF PARTICIPANTS' UNDERGROUND FACILITIES BEFORE YOU DIG IN WISCONSIN
CALL DIGGERS HOTLINE
1-800-242-8511
TOLL FREE
 WIS. STATUTE 182.0175 (1974)
 REQUIRES MIN. OF 3 WORK DAYS NOTICE BEFORE YOU EXCAVATE

MARK	REVISION	DATE	BY
Engineer: BDB	Checked By: MW	Scale: AS SHOWN	
Technician: MW	Date: JUNE 2015	Field Bk:	

PROJECT No. 115.0448.30

HAWTHORNE ELEMENTARY
SITE PLAN
 MADISON, WISCONSIN

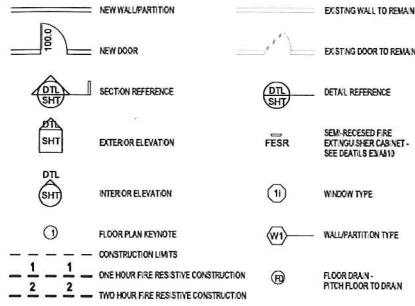
SNYDER & ASSOCIATES, INC.
 5010 VOGES ROAD
 MADISON, WISCONSIN 53718
 608-838-0444 | www.snyder-associates.com



C20

P:\PROJECTS\2015\115.0448.30 - Hawthorne Elementary - 2015.dwg

FLOOR PLAN - SYMBOLS LEGEND



GYPSUM BOARD PARTITIONS - GENERAL NOTES

ALL GYPSUM BOARD PARTITIONS SHALL BE (AA) UNLESS OTHERWISE NOTED ON FLOOR PLAN.
 GYPSUM BOARD PARTITION DIMENSIONS ON FLOOR PLAN ARE BASED ON FACE OF FINISHED PARTITION TO FACE OF FINISHED PARTITION (DIMINUAL).
 REFER TO GYPSUM BOARD SPECIFICATION FOR LOCATION AND TYPE(S) OF GYPSUM BOARD MATERIAL, REQUIRED.
 PROVIDE TYPE 'X' FIRE RATED GYPSUM BOARD AT ALL FIRE RATED PARTITIONS.
 SEAL ALL WALL PENETRATIONS AT PER METER AND FIRESTOP ALL FIRE RATED PARTITIONS.
 EXTEND ALL GYPSUM BOARD PARTITIONS FULL HEIGHT TO UNDERSIDE OF STEEL DECK ABOVE. AT METAL DECK CONSTRUCTION ABOVE PROVIDE S.P. JOINT BETWEEN TOP OF PARTITION AND UNDERSIDE OF METAL DECK/ STRUCTURAL STEEL MEMBER ABOVE. REFER TO DETAIL XX.AXX.
MASONRY PARTITIONS - GENERAL NOTES
 ALL MASONRY PARTITIONS INDICATED WITH THE FOLLOWING HATCH PATTERN: .
 ALL MASONRY PARTITIONS SHALL BE (AA) UNLESS OTHERWISE NOTED OR DIMENSIONED. REFER TO FLOOR PLAN FOR PARTITION THICKNESS.
 PROVIDE U.L. RATED CONCRETE BLOCK AT ALL FIRE RATED PARTITIONS.
 SEAL ALL WALL PENETRATIONS AT PER METER AND FIRESTOP ALL RATED PARTITIONS.
 EXTEND CONCRETE BLOCK PARTITIONS FULL HEIGHT TO UNDERSIDE OF STEEL DECK ABOVE. REFER TO DETAIL XX.AXX.
 PROVIDE HORIZONTAL MASONRY JOINT REINFORCEMENT AT 18" OC VERTICALLY. REFER TO STRUCTURAL DRAWINGS FOR VERTICAL REINFORCEMENT REQUIREMENTS.

KEYNOTE LEGEND - INTERIOR PARTITION TYPES

TAG	INTERIOR PARTITION DESCRIPTION
A8	INTERIOR STEEL STUD PARTITION: 1" STEEL STUDS @ 16" OC WITH FULL THICKNESS SOUND ATTENUATION INSULATION AND ONE LAYER 5/8" GYPSUM BOARD @ EACH FACE. PROVIDE 1 HR RATED U.L. RATED DESIGN WHERE THE CONSTRUCTION IS INDICATED ON PLANS.

NOTE # FLOOR PLAN NOTE

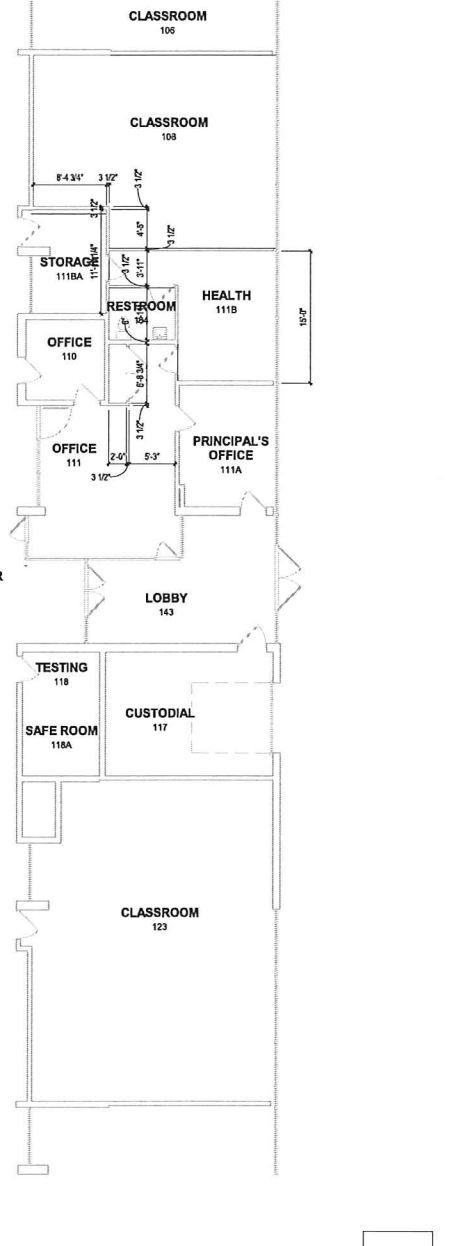
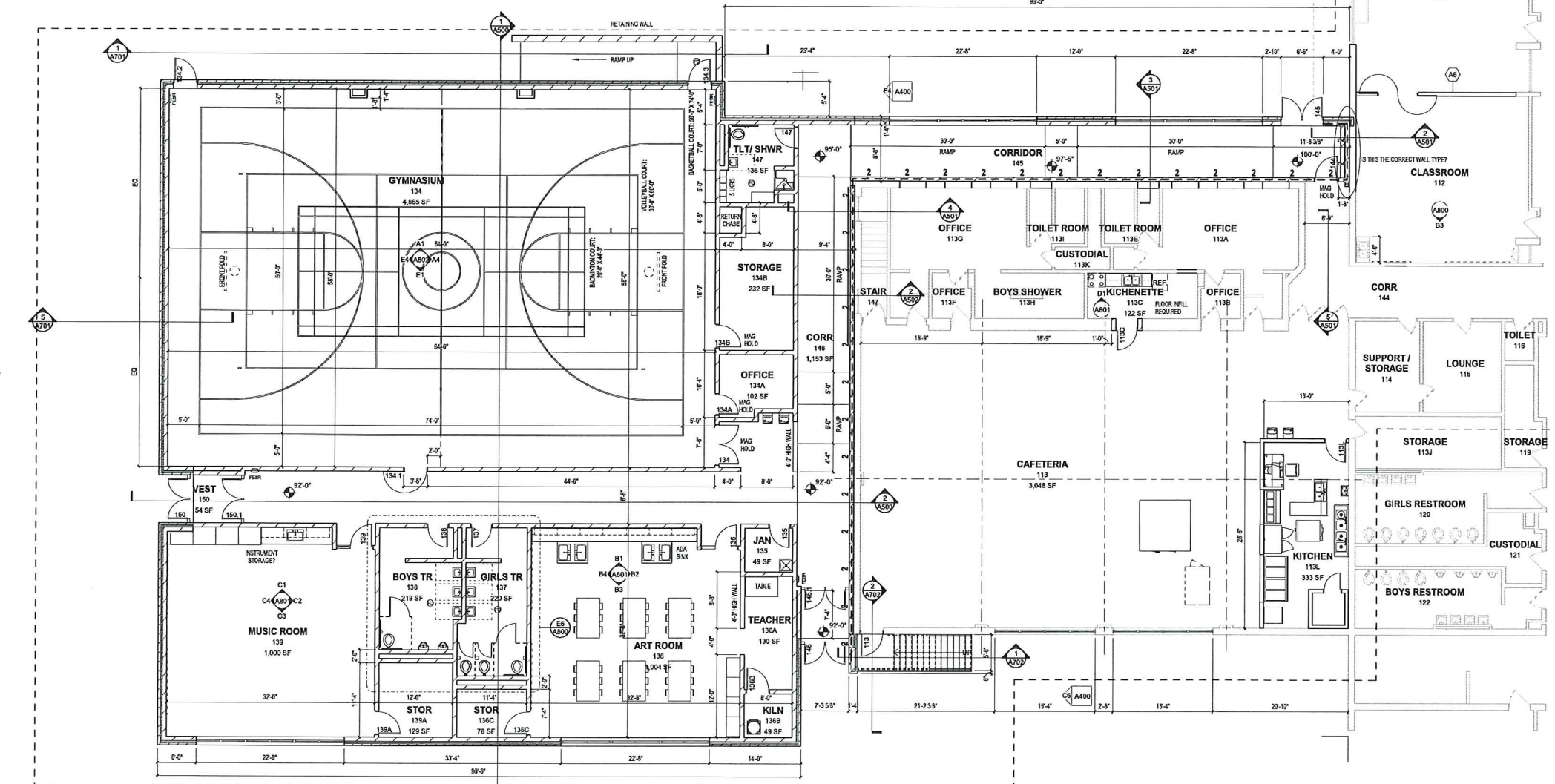
206	12" TV MONITOR AND WALL MOUNT FURNISHED BY OWNER
-----	--

KEYNOTE LEGEND - EXTERIOR WALL TYPES

TAG	EXTERIOR WALL DESCRIPTION
W1	EXTERIOR WALL: MASONRY CAVITY WALL CONSISTING OF 4" FACE BRICK (EDIT FOR OTHER MATERIALS) 13/4" AIR SPACE, 3" RIGID INSULATION, SPRAY APPLIED AIR AND VAPOR BARRIER SYSTEM ON XX' CONCRETE MASONRY UNIT BACKUP WALL WITH ADJUSTABLE (TWO-FEET) HORIZONTAL MASONRY JOINT REINFORCING @ 18" OC (REFER TO STRUCTURAL DRAWINGS FOR REQUIRED VERTICAL REINFORCING). PROVIDE CAVITY DRAINAGE MATERIAL, FLASHING, MASONRY EXPANSION AND CONTROL JOINTS. PROVIDE CAVITY WEEPSVENTS AT 12" BOTTOM OF CAVITY.
W2	EXTERIOR WALL: SINGLE WYTHE MASONRY WALL CONSISTING OF XX' CONCRETE MASONRY UNIT WITH INSULATED CORES. PROVIDE HORIZONTAL MASONRY JOINT REINFORCING @ 18" OC REFER TO STRUCTURAL DRAWINGS FOR REQUIRED VERTICAL REINFORCING, WEEPS @ 18" OC FLASHING, EXPANSION AND CONTROL JOINTS.
W4	EXTERIOR WALL: MASONRY VENEER STUD WALL CONSISTING OF 4" FACE BRICK (EDIT FOR OTHER MATERIALS), 1 3/4" AIR SPACE, 3" RIGID INSULATION, SPRAY APPLIED AIR AND VAPOR BARRIER SYSTEM ON 5/8" GYPSUM BREATHING 1/2" GALVANIZED COIL FORMED STEEL STUDS (REFER TO STRUCTURAL DRAWINGS FOR GANGING AND 11 LAYER 5/8" GYPSUM BOARD AT INTERIOR FACE). PROVIDE ADJUSTABLE MASONRY VENEER ANCHORS @ 18" EV. PROVIDE HORIZONTAL MASONRY JOINT REINFORCING @ 18" OC. PROVIDE CAVITY DRAINAGE MATERIAL, FLASHING, MASONRY EXPANSION AND CONTROL JOINTS. PROVIDE CAVITY WEEPSVENTS @ 30" OC. COMPARTMENTALIZE THE CAVITY AND PROVIDE CAVITY WEEPSVENTS AT TOP/BOTTOM OF CAVITY.
W3	EXTERIOR WALL (BELOW GRADE): REINFORCED CAST-IN-PLACE CONCRETE FOUNDATION WALL. PROVIDE 2" RIGID FOUNDATION INSULATION, EXTEND 45" VERTICALLY ON WALL AND 24" HORIZONTALLY BELOW FLOOR SLAB.

FLOOR PLAN - GENERAL NOTES

DIMENSIONS ON FLOOR PLAN ARE BASED ON FACE OF FINISHED WALL TO FACE OF FINISHED WALL (DIMINUAL).
 VERIFY ALL DIMENSIONS AND CONDITIONS AT JOB SITE. PORTIONS OF EXISTING CONSTRUCTION MAY HAVE BEEN REMOVED BY OWNER.
 MAINTAIN CONTINUOUS UTILITY SERVICE TO ALL SPACES IN THE BUILDING NOT AFFECTED BY THIS WORK. COORDINATE WITH OWNER ANY DISRUPTION IN SERVICES REQUIRED TO PERFORM WORK OR TO MODIFY EXISTING PIPING, DUCTWORK OR ANY ASSOCIATED EQUIPMENT.
 REFER TO SHEET A800 FOR ROOM FINISH SCHEDULE AND NOTES.
 REFER TO SHEET A800 FOR DOOR SCHEDULES, DOOR TYPES, AND NOTES.



7/27/2015 11:23:03 AM C:\PRA\RAD\Local\Project Files\140248-04_Hawthorne Elementary_115_central_addition\A201

FIRST FLOOR PLAN
1/8" = 1'-0"

ALTERNATE BID 1
1/8" = 1'-0"

205 South Water Street Milwaukee, Wisconsin 53204 414.359.2040
 2310 Concourse Drive Suite 2000 Madison, Wisconsin 53718 608.240.8900
 1613 Franklin Road Suite 3 Sarasota, Florida 34236 941.343.2618
 intelligent designs. inspired results. | www.prrch.com
prc
 PLUNKETT RAYSICH ARCHITECTS, LLP

Madison Metropolitan School District
3rd Addition & Interior Renovation - Hawthorne Middle School
 3344 Concord Ave., Madison, WI 53714

Revisions	
Drawn By:	PRA
Date:	07-27-2015
Job No.:	140248-04
Sheet No.:	A201

NOT FOR CONSTRUCTION
© Plunkett Raysich Architects, LLP

EXTERIOR FINISH PATTERNS	
	BRICK 1
	BRICK 2
	SIDING

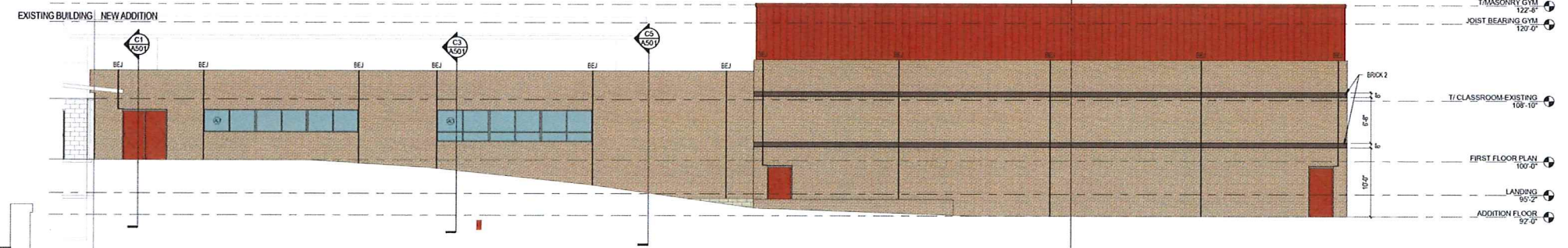
- EXTERIOR ELEVATIONS - GENERAL NOTES**
- PAINT ALL EXPOSED STEEL LINTELS TO MATCH ADJACENT MASONRY COLOR
 - TRIM ALL EXTERIOR LIGHTING FIXTURES, OUTLETS, HOSE BIBBS AND ALL OTHER PENETRATIONS WITH 1M FIBER CEMENT TRIM (TYP.)
 - REFER TO SHEET A800 FOR WINDOW FRAME ELEVATIONS
 - SEALANT COLORS TO MATCH ADJACENT FINISHED SURFACES
 - FIBER CEMENT COLOR TO BE REDWOOD STAIN

NOTE #	EXTERIOR ELEVATION NOTE
A400	6" X 3" FUTURE PHOTOVOLTAIC PANEL BY OWNER

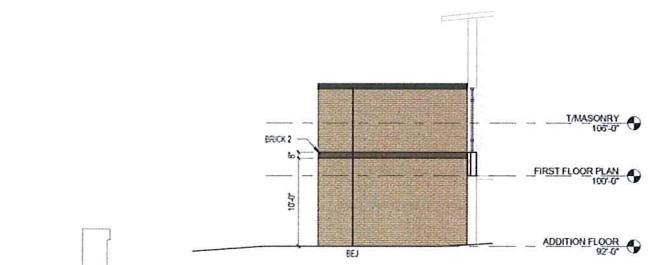
KEYNOTE LEGEND - CONSTRUCTION TYPES	
TAG	CONSTRUCTION DESCRIPTION



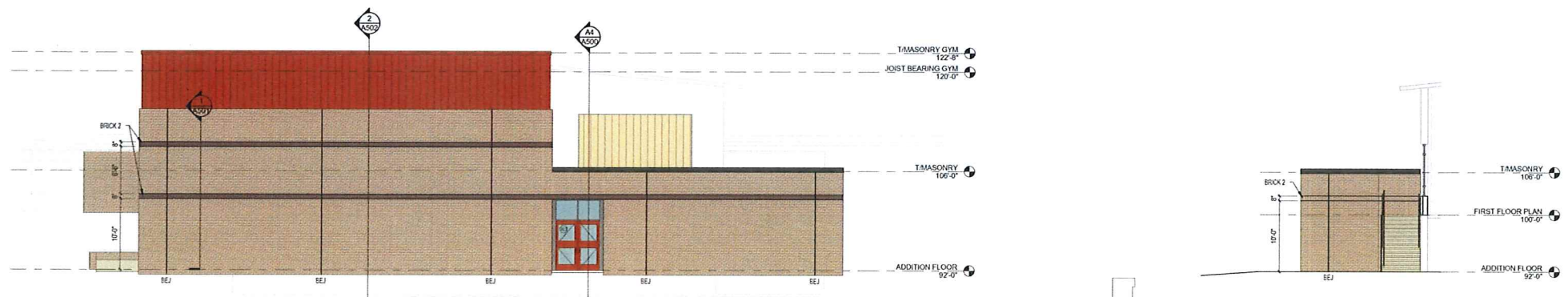
B1 SOUTH ELEVATION
A400 1/8" = 1'-0"



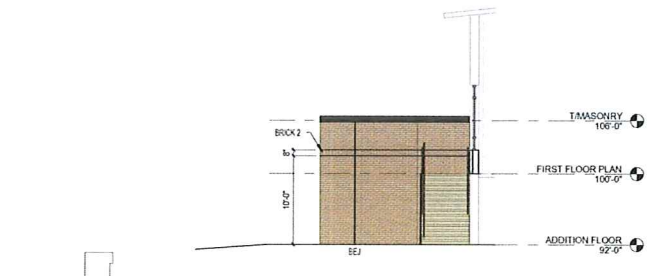
C1 NORTH ELEVATION
A400 1/8" = 1'-0"



C6 PARTIAL EAST ELEVATION - ALTERNATE BID 1
A400 1/8" = 1'-0"



E1 WEST ELEVATION
A400 1/8" = 1'-0"



E5 PARTIAL EAST ELEVATION 1
A400 1/8" = 1'-0"



E6 PARTIAL EAST ELEVATION 2
A400 1/8" = 1'-0"

8/10/2015 12:38:36 PM C:\PRA\RAC\Local Project Files\140248-04_Hawthorne Elementary_V15_central_mabj\rvf

209 south water street milwaukee, wisconsin 53204 414 259 2000
2310 crossroads drive suite 2000 madison, wisconsin 53718 608 240 9900
1613 fruitville road suite 3 sarasota, florida 34238 941 344 3618
www.praarch.com
prad PLUNKETT RAYSECH ARCHITECTS, LLP
intelligent designs. inspired results.

Madison Metropolitan School District
Hawthorne Middle School - 3rd Addition & Interior Renovation
3344 Concord Ave, Madison, WI 53714

NOT FOR CONSTRUCTION
© Plunkett Raysech Architects, LLP

Revisions	
Drawn By:	PRA
Date:	07-31-2015
Job No.:	140248-04
Sheet No.:	A400



©2015 Plunkett Raysich Architects, LLP - August 12, 2015 - # 140248-0x



TWP LED LED Wall Luminaire



F8

Catalog
Number

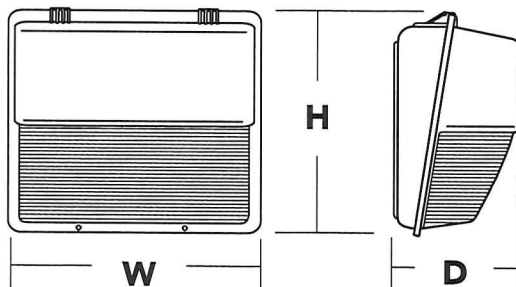
Notes

Type

Hit the Tab key or mouse over the page to see all interactive elements.

Specifications

Width:	16-1/8" (41.0 cm)
Height:	15-1/2" (39.4 cm)
Depth:	7-3/4" (19.7 cm)
Weight:	15 lbs (6.8kg)



Introduction

The popular TWP luminaire is now available with LED technology. Cast in a traditional dayform, the TWP LED offers a classic appearance and is powered by advanced LEDs. A one-piece polycarbonate cover delivers enhanced durability and is vandal resistant, making the TWP LED ideal for lower mounting heights or high-traffic areas.

The new TWP LED luminaire is powerful yet energy efficient, capable of replacing up to a 250W metal halide luminaire while saving up to 77% in energy costs. Offering an expected service life of more than 20 years, the TWP LED eliminates frequent lamp and ballast replacements associated with traditional technologies.

Ordering Information

EXAMPLE: TWP LED 30C 700 50K T3M MVOLT DDBXD

TWP LED						
Series	Performance Package	Distribution	Voltage	Control Options	Other Options	Finish (required)
TWP LED	LEDs 10C 10 LEDs (one engine) 20C 20 LEDs (two engines) 30C 30 LEDs (one engine) Drive current 700 700 mA Color temperature 50K 5000 K (standard) 40K 4000 K (optional)	T3M Type III Medium	MVOLT ¹ 120 ¹ 208 ¹ 240 ¹ 277 ¹ 347 ² 480 ²	Shipped installed DMG 0-10V dimming driver (no controls) PE Photoelectric cell, button type ³	Shipped installed SF Single fuse (120, 277, 347V) ⁴ DF Double fuse (208, 240, 480V) ⁴ TP Tamper proof screws NOM NOM Certified SPD Separate surge protection ⁵ Shipped separately WG Wire guard ⁶	DDBXD Dark bronze DBLXD Black DWHXD White DDBTXD Textured dark bronze DBLBXD Textured black DWHGXD Textured white

Stock configurations are offered for shorter lead times:

Standard Part Number	Stock Part Number
TWP LED 10C 700 50K T3M MVOLT DDBXD	TWP LED 10C 50K
TWP LED 20C 700 50K T3M MVOLT DDBXD	TWP LED 20C 50K
TWP LED 30C 700 50K T3M MVOLT DDBXD	TWP LED 30C 50K

Accessories

Ordered and shipped separately.

TWPWG U Wire guard accessory⁷

NOTES

- MVOLT driver operates on any line voltage from 120-277V (50/60 Hz). Specify 120, 208, 240 or 277 options only when ordering with fusing (SF, DF options) or photocontrol (PE).
- Not available with 10C option.
- Must specify voltage; not available with MVOLT or 480 voltage options.
- Single fuse (SF) requires 120, 277 or 347 voltage option. Double fuse (DF) requires 208, 240 or 480 voltage option.
- See the electrical section on page 2 for more details.
- Also available as a separate accessory; see Accessories information at left.
- Requires field modification (only when ordered as a separate accessory).



Performance Data

Lumen Output

Lumen values are from photometric tests performed in accordance with IESNA LM-79-08. Data is considered to be representative of the configurations shown, within the tolerances allowed by Lighting Facts. Contact factory for performance data on any configurations not shown here.

LEDs	Drive Current (mA)	Performance Package	System Watts	Dist. Type	40K (4000 K, 70 CRI)					50K (5000 K, 65 CRI)				
					Lumens	B	U	G	LPW	Lumens	B	U	G	LPW
10C (10 LEDs)	700	10C700--K	26W	T3M	1,478	0	3	2	57	1,614	0	3	2	62
20C (20 LEDs)	700	20C700--K	45W	T3M	2,877	0	3	3	64	3,149	0	3	3	70
30C (30 LEDs)	700	30C700--K	67W	T3M	4,157	0	3	3	62	4,377	0	3	3	65

Lumen Ambient Temperature (LAT) Multipliers

Use these factors to determine relative lumen output for average ambient temperatures from 0-40°C (32-104°F).

Ambient		Lumen Multiplier
0°C	32°F	1.02
10°C	50°F	1.01
20°C	68°F	1.00
25°C	77°F	1.00
30°C	86°F	1.00
40°C	104°F	0.98

Projected LED Lumen Maintenance

Data references the extrapolated performance projections for the **TWP LED 30C 700** platform in a **25°C ambient**, based on 10,000 hours of LED testing (tested per IESNA LM-80-08 and projected per IESNA TM-21-11).

To calculate LLF, use the lumen maintenance factor that corresponds to the desired number of operating hours below. For other lumen maintenance values, contact factory.

Operating Hours	0	25,000	50,000	100,000
Lumen Maintenance Factor	1.0	0.97	0.96	0.94

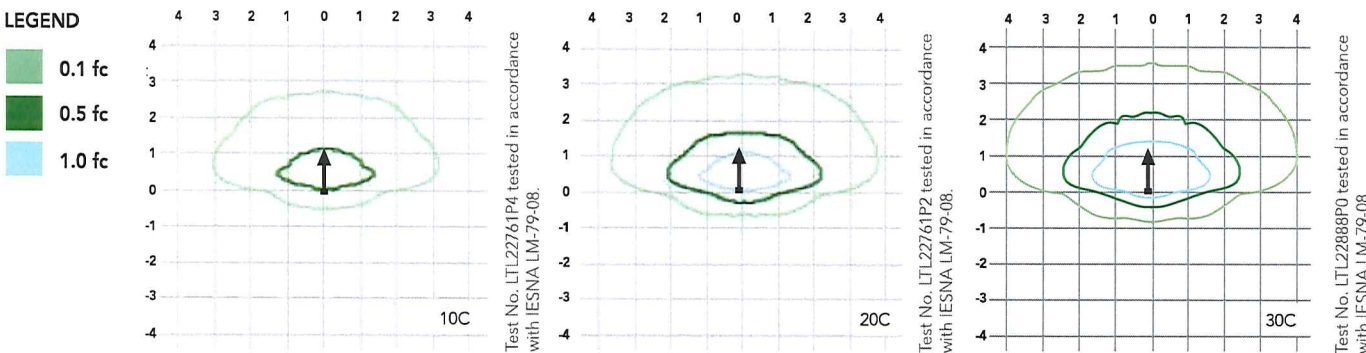
Electrical Load

LEDs	Drive Current (mA)	System Watts	Current (A)					
			120V	208V	240V	277V	347V	480V
10C	700	26 W	0.24	0.14	0.12	0.10	-	-
20C	700	45 W	0.42	0.24	0.21	0.18	0.14	0.10
30C	700	67 W	0.62	0.36	0.31	0.27	0.21	0.16

Photometric Diagrams

To see complete photometric reports or download .ies files for this product, visit Lithonia Lighting's [TWP LED homepage](#).

Isofootcandle plots for the TWP LED --- 700 50K T3M. Distances are in units of mounting height (15').



FEATURES & SPECIFICATIONS

INTENDED USE

The energy savings, long life and easy-to-install design of the TWP LED make it the smart choice for building-mounted doorway and pathway illumination for nearly any facility.

CONSTRUCTION

Die-cast aluminum rear housing has an impact-resistant, UV-stabilized polycarbonate front housing and refractor that is fully gasketed. Modular design allows for ease of maintenance. The LED driver is mounted to the front casting to thermally isolate it from the light engine for low operating temperature and long life. Housing is completely sealed against moisture and environmental contaminants.

FINISH

Exterior parts are protected by a zinc-infused Super Durable TGIC thermoset powder coat finish that provides superior resistance to corrosion and weathering. A tightly controlled multi-stage process ensures a minimum 3 mils thickness for a finish that can withstand extreme climate changes without cracking or peeling. Available in textured and non-textured finishes.

OPTICS

Protective polycarbonate lens covers the light engine's precision-molded proprietary acrylic lenses. Light engines are available in 5000 K (65 min. CRI) configurations.

ELECTRICAL

Light engine(s) consist of 10 or 30 high-efficacy LEDs mounted to a metal-core circuit board and integral aluminum heat sink to maximize heat dissipation and promote long life (L94/100,000 hrs at 25°C). The electronic driver has a power factor of >90%, THD <20%, and a minimum 2.5 KV

surge rating. When ordering the SPD option, a separate surge protection device is installed within the luminaire which meets a minimum Category C low operation (per ANSI/IEEE C62.41.2).

INSTALLATION

Top 3/4" threaded wiring access. Back access through removable 3/4" knockout. Feed-thru wiring can be achieved by using a conduit tee. Mount on any flat, vertical surface.

LISTINGS

UL listed for wet locations. Rated for -40°C minimum ambient.

WARRANTY

Five year limited warranty. Full warranty terms located at www.acuitybrands.com/CustomerResources/Terms_and_conditions.aspx.

Note: Actual performance may differ as a result of end-user environment and application. All values are design or typical values, measured under laboratory conditions at 25°C. Specifications subject to change without notice.



PROMO CODE: EMERALD10* **10% OFF** Ends May 8th **SHOP NOW!**

*Receive 10% off your purchase with promotion code EMERALD10. Offer expires 5/8/2015 at 11:59pm CDT. Excludes Poles & Bullhorns and Cree® LED Lamps. One-time use only. Maximum discount of \$2,000.

Home / Indoor Lighting / Exit & Emergency



**Cold Location LED
Emergency Light, Wet-
listed, Dark Bronze**

\$84.99

SKU: E-XML4CWZ

Quantity

ADD TO CART

ADD TO QUOTE

OUT OF STOCK
Available 5/25/2015

RATINGS

WRITE A REVIEW

ASK A QUESTION

DETAILS SPECS & GUIDE ACCESSORIES REVIEWS Q&A

OVERVIEW

Wet-listed, cold location LED emergency light in dark bronze with input of 120V or 277V

FEATURES

- Die-cast aluminum housing with durable powder-coated finish
- Polycarbonate prismatic refractor
- Charge/power on indicator LED
- Push-to-test
- Sealed, 4.8V maintenance-free nickel cadmium battery provides up to 90 minutes of emergency operation
- Battery recharges within 24 hours via internal solid-state, two-rate charger
- Includes back plate for wall mount. Universal knockout pattern on back plate provides for easy installation over most standard junction boxes
- Fully gasketed
- Meets UL924, NFPA 101 Life Safety Code, NEC, OSHA codes
- 5-year limited warranty on housing and electronics

APPLICATIONS

For general purpose exit identification in indoor commercial, retail, or industrial applications.