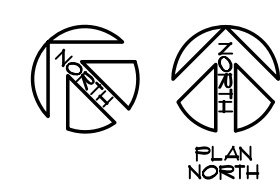
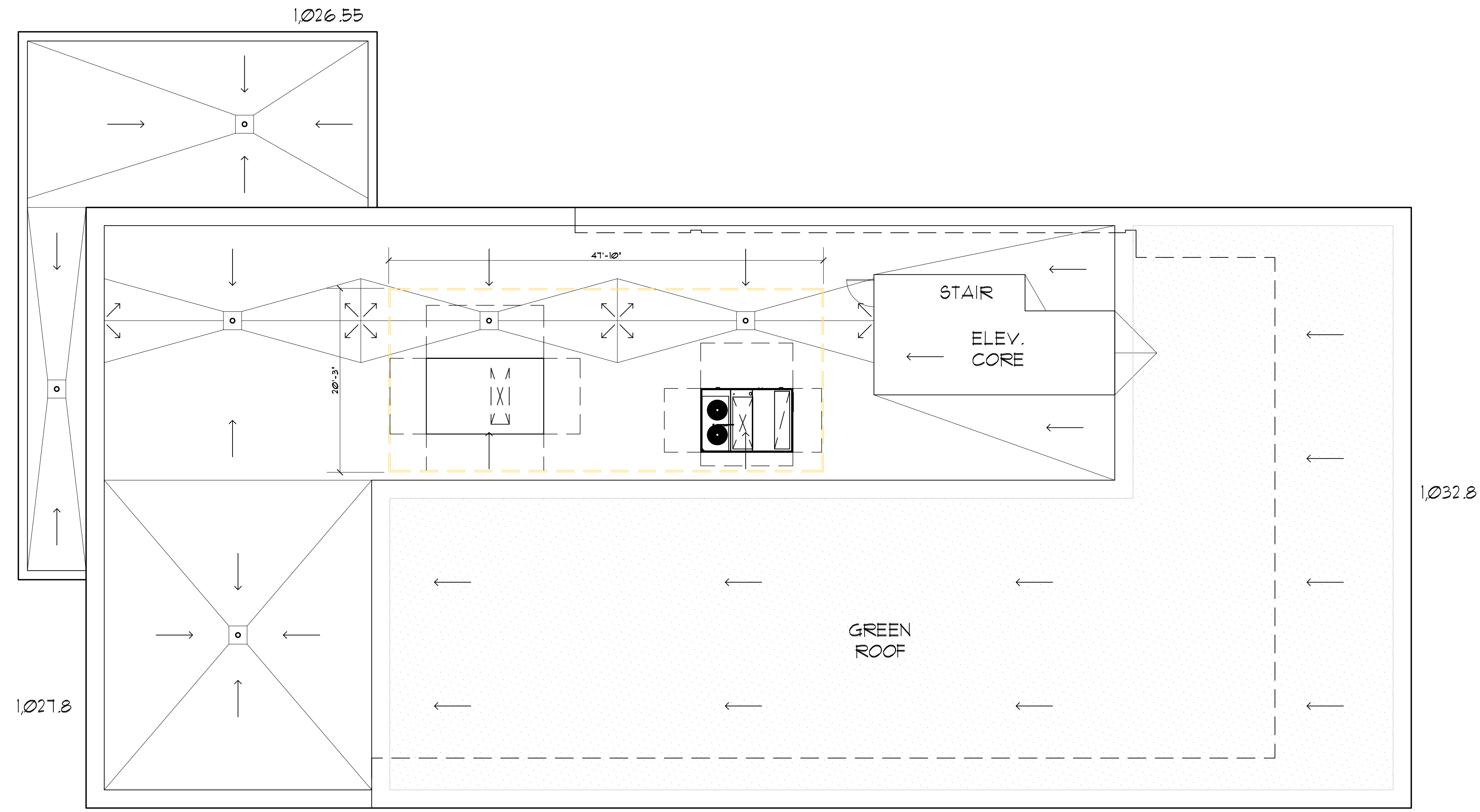




GARY BRINK & ASSOCIATES  
ARCHITECTS  
7780 ELMWOOD AVENUE  
MIDDLETON, WI 53562  
608-829-1750  
608-829-3056 (FAX)



**ROOF PLAN**  
SCALE: 1/8" = 1'-0"

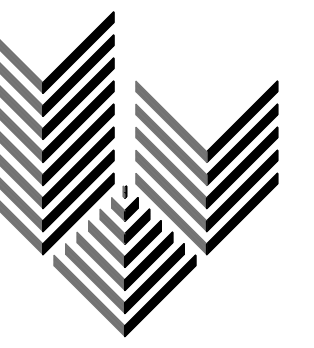


PROJECT: **AC BY MARRIOTT - DOWNTOWN MADISON**

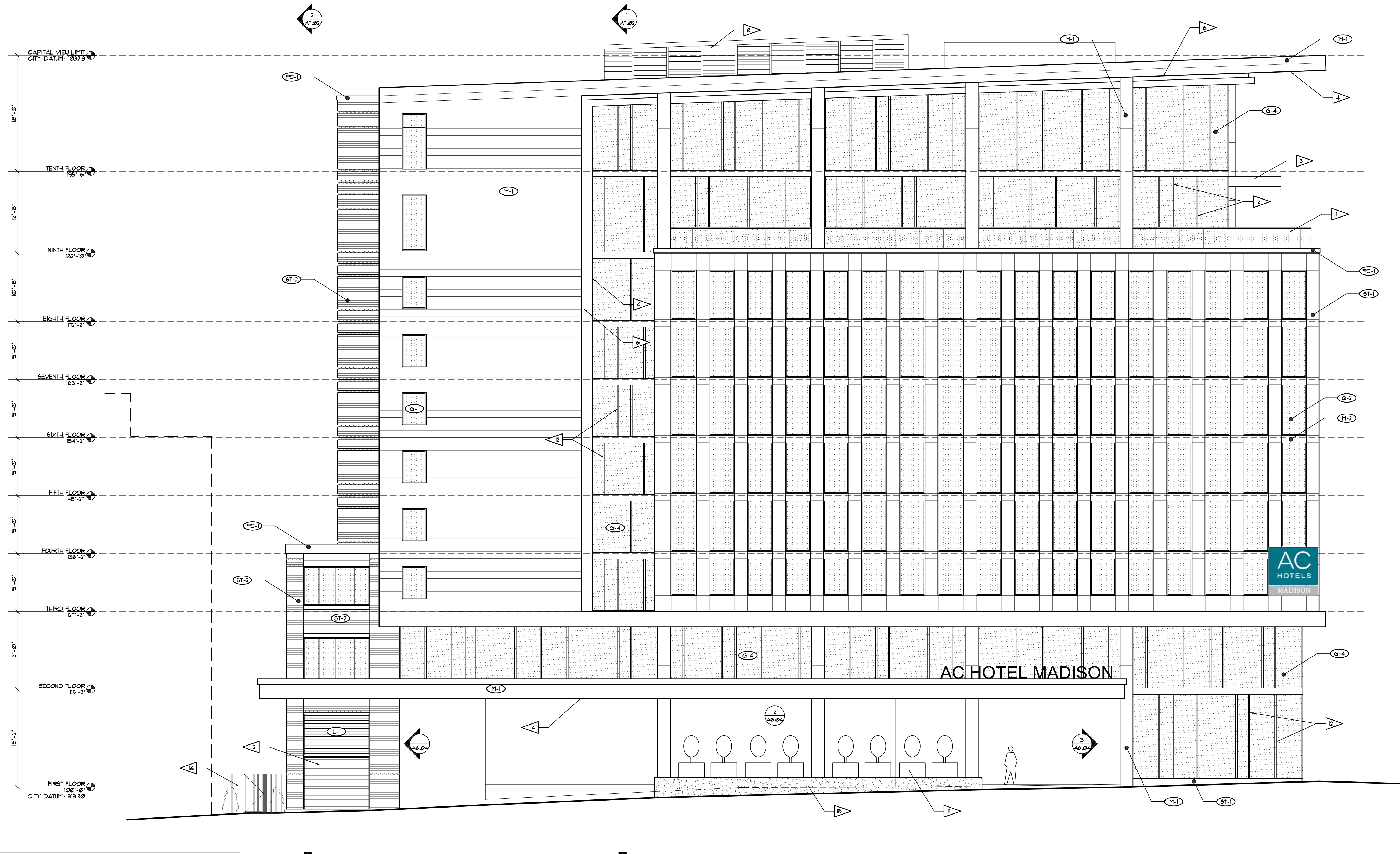
202 E. WASHINGTON AVE.  
MADISON, WISCONSIN  
OWNER: **202 E. WASHINGTON LLC**  
C/O: NORTH CENTRAL GROUP  
1600 ASPEN COMMONS, SUITE 200 - MIDDLETON, WISCONSIN

2014 GARY BRINK & ASSOC.  
Any duplication, reproduction, or use by any other party is prohibited unless prior written authorization is received from GARY BRINK & ASSOC or Marriott International.

PROJECT: 201410  
DRAWN BY: AR  
DATE:  
SCALE: AS NOTED



GARY BRINK & ASSOCIATES  
ARCHITECTS  
7780 ELMWOOD AVENUE  
MIDDLETON, WI 53562  
608-829-1750  
608-829-3056 (FAX)



1 PLAN SOUTH ELEVATION  
SCALE: 1/8" = 1'-0"

- EXTERIOR ELEVATION KEY NOTES**
- GLASS GUARDRAIL WITH PRE FINISHED ALUMINUM TOP RAIL - 48" AFF.
  - HIGH-SPEED OVERHEAD DOOR.
  - 2" x 8" ALUMINUM TUBE TRELLIS STRUCTURE - BLACK ANODIZED FINISH.
  - PAINTED STEEL FRAMING W/ 2x8 CROSS FRAMING, 2x10 BEAMS & 4x4 POSTS.
  - WHITE COMPOSITE METAL PANEL.
  - LED LIGHT COVE.
  - INDOOR/OUTDOOR SEE-THRU GAS FIREPLACE.
  - ROOFTOP MECHANICAL SCREENING.
  - GENERATOR ENCLOSURE W/ OPEN-AIR TRELLIS STRUCTURE ABOVE.
  - IVY / GREEN WALL.
  - LANDSCAPING ELEMENT - SEE L1-01 FOR MORE DETAILS.
  - 2" AND 4" MULLION WIDTHS TO BE RANDOMIZED THROUGHOUT CURTAIN WALL SYSTEM.
  - REVOLVING DOOR / MAIN ENTRY.
  - INTERNALLY LIT EXTERIOR SIGNAGE - SEE EX-01 & EX-02 FOR MORE DETAILS.
  - SHOT BLASTED CONCRETE WALL.
  - ALUMINUM FENCE AND GATE.

GRAPHIC	KEY	EXTERIOR FINISH DESCRIPTION	GRAPHIC	KEY	EXTERIOR FINISH DESCRIPTION	GRAPHIC	KEY	EXTERIOR FINISH DESCRIPTION	GRAPHIC	KEY	EXTERIOR FINISH DESCRIPTION
	ST-1	MASONRY FIELD MFR: STONE PANELS SIZE: N.A. COLOR: MOCHA CREME LIMESTONE		M-1	METAL PANEL, COPINGS, FASCIAS, ETC. MFR: DRI-DESIGN SIZE: VARIES SEE ELEVATIONS COLOR: MEDIUM BRONZE		G-2	STOREFRONT MFR: TBD FRAME: CLEAR ANODIZED GLASS: GREY TINT		G-3	CURTAIN WALL TYPE 1 MFR: TBD FRAME: CLEAR ANODIZED GLASS: SPANDREL
	ST-2	MASONRY FIELD MFR: UTILITY BRICK SIZE: UTILITY BRICK COLOR: LIMESTONE		M-2	METAL PANEL, COPINGS, FASCIAS, ETC. MFR: DRI-DESIGN SIZE: VARIES SEE ELEVATIONS COLOR: CLEAR ANODIZED		G-3	NOT USED		G-4	STOREFRONT MFR: TBD FRAME: CLEAR ANODIZED GLASS: SPANDREL
	PC-1	PRECAST HEADERS MFR: ROCKCAST SIZE: N.A. COLOR: SLATE		G-1	WINDOW MFR: TBD FRAME: MEDIUM BRONZE GLASS: CLEAR		G-4	CURTAIN WALL TYPE 1 MFR: TBD FRAME: CLEAR ANODIZED GLASS: CLEAR		L-1	LOUVER MFR: TBD FRAME: MEDIUM BRONZE

PROJECT: AC BY MARRIOTT - DOWNTOWN MADISON  
202 E. WASHINGTON AVE.  
MADISON, WISCONSIN  
OWNER: 202 E. WASHINGTON LLC  
C/O: NORTH CENTRAL GROUP  
1600 ASPEN COMMONS, SUITE 200 - MIDDLETON, WISCONSIN

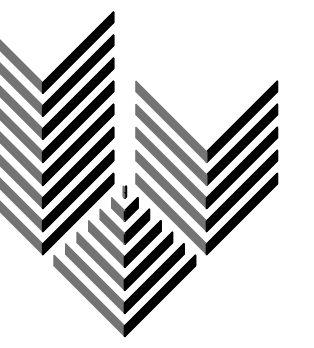
2014 GARY BRINK & ASSOC.  
Any duplication, reproduction, or use by any other party is prohibited unless prior written authorization is received from GARY BRINK & ASSOC or Marriott International.

PROJECT: 201410  
DRAWN BY: AR  
DATE:  
SCALE: AS NOTED

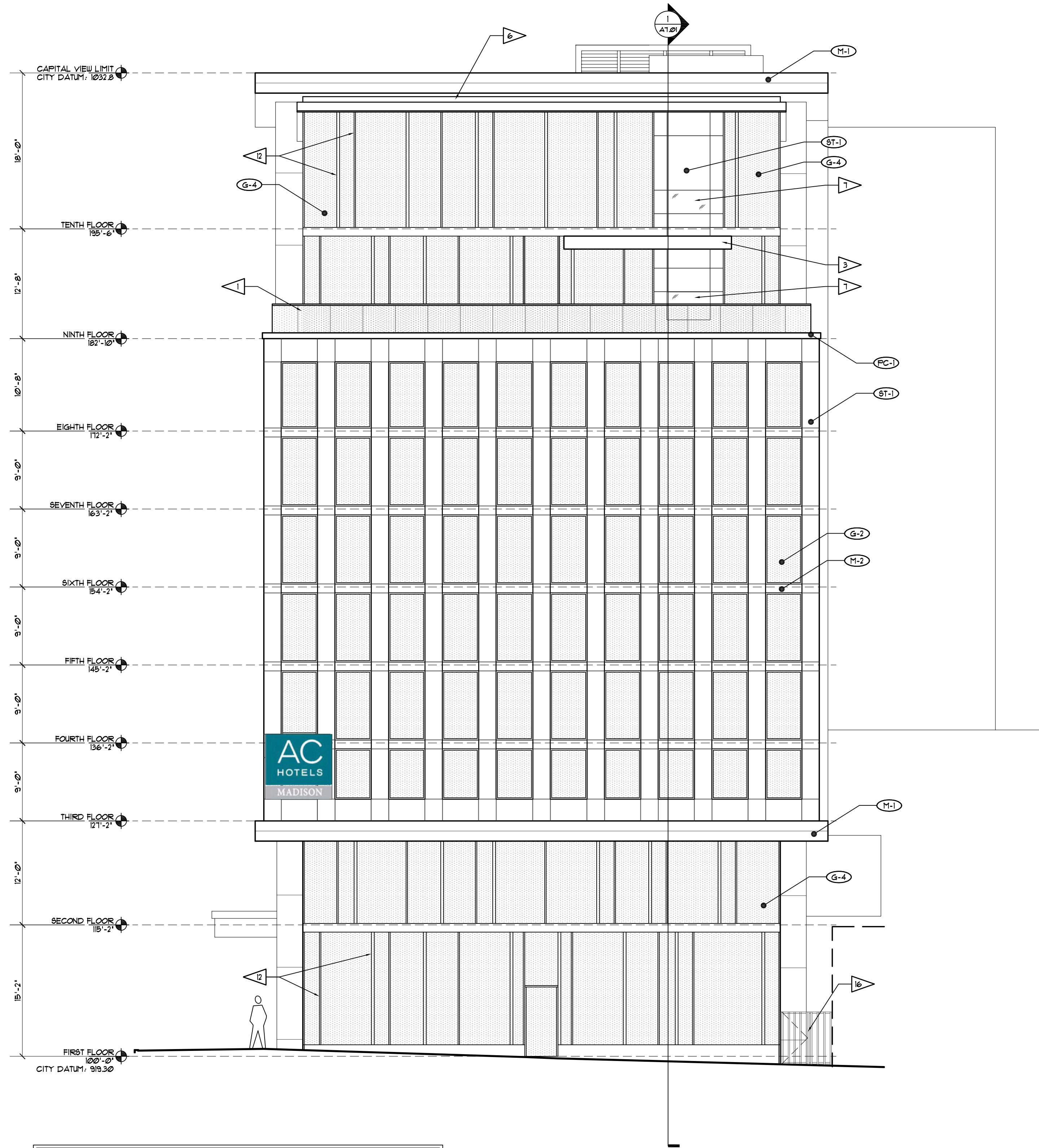
EXTERIOR ELEVATIONS

A6.01

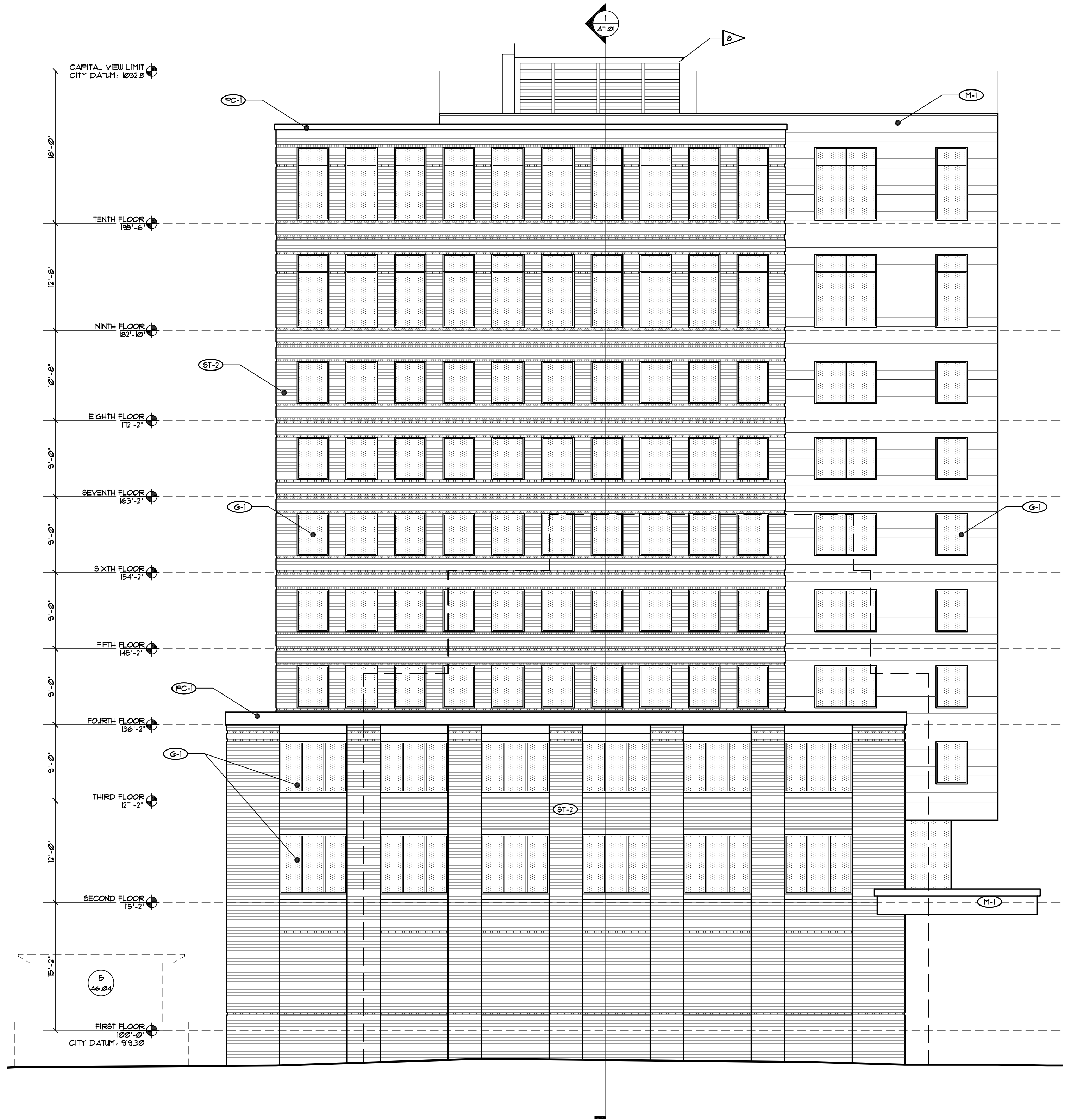




GARY BRINK & ASSOCIATES  
ARCHITECTS  
7780 ELMWOOD AVENUE  
MIDDLETON, WI 53562  
608-829-1750  
608-829-3056 (FAX)



**1 PLAN EAST ELEVATION**  
SCALE: 1/8" = 1'-0"



**2 PLAN WEST ELEVATION**  
SCALE: 1/8" = 1'-0"

EXTERIOR ELEVATION KEY NOTES	
1	GLASS GUARDRAIL WITH PRE FINISHED ALUMINUM TOP RAIL - 48" AFF.
2	HIGH-SPEED OVER-HEAD DOOR.
3	2" x 8" ALUMINUM TUBE TRELLIS STRUCTURE - BLACK ANODIZED FINISH.
4	PAINTED STEEL FRAMING W/ 2x8 CROSS FRAMING, 2x10 BEAMS & 4x4 POSTS.
5	WHITE COMPOSITE METAL PANEL.
6	LED LIGHT COVE.
7	INDOOR/OUTDOOR SEE-THRU GAS FIREPLACE.
8	ROOFTOP MECHANICAL SCREENING.
9	GENERATOR ENCLOSURE W/ OPEN-AIR TRELLIS STRUCTURE ABOVE.
10	IVY / GREEN WALL.
11	LANDSCAPING ELEMENT - SEE LI.01 FOR MORE DETAILS.
12	2" AND 4" MULLION WIDTHS TO BE RANDOMIZED THROUGHOUT CURTAIN WALL SYSTEM
13	REVOLVING DOOR / MAIN ENTRY.
14	INTERNALLY LIT EXTERIOR SIGNAGE - SEE EX.01 & EX.02 FOR MORE DETAILS.
15	SHOT BLASTED CONCRETE WALL
16	ALUMINUM FENCE AND GATE

GRAPHIC	KEY	EXTERIOR FINISH DESCRIPTION	GRAPHIC	KEY	EXTERIOR FINISH DESCRIPTION	GRAPHIC	KEY	EXTERIOR FINISH DESCRIPTION	GRAPHIC	KEY	EXTERIOR FINISH DESCRIPTION
	ST-1	MASONRY FIELD MFGR: STONE PANELS SIZE: N.A. COLOR: MOCHA CREME LIMESTONE		M-1	METAL PANEL, COPINGS, FASCIAS, ETC. MFGR: DRI-DESIGN SIZE: VARIES SEE ELEVATIONS COLOR: MEDIUM BRONZE		G-2	STOREFRONT MFGR: TBD FRAME: CLEAR ANODIZED GLASS, GREY TINT		G-3	CURTAIN WALL TYPE 1 MFGR: TBD FRAME: CLEAR ANODIZED GLASS, SPANDREL
	ST-2	MASONRY FIELD MFGR: UTILITY BRICK SIZE: N.A. COLOR: LIMESTONE		M-2	METAL PANEL, COPINGS, FASCIAS, ETC. MFGR: DRI-DESIGN SIZE: VARIES SEE ELEVATIONS COLOR: CLEAR ANODIZED		G-3	NOT USED		G-4	STOREFRONT MFGR: TBD FRAME: CLEAR ANODIZED GLASS, SPANDREL
	FC-1	PRECAST HEADERS MFGR: ROCKCAST SIZE: N.A. COLOR: SLATE		G-1	WINDOW MFGR: TBD FRAME: MEDIUM BRONZE GLASS: CLEAR		G-4	CURTAIN WALL TYPE 1 MFGR: TBD FRAME: CLEAR ANODIZED GLASS, CLEAR		L-1	LOWER MFGR: TBD FRAME: MEDIUM BRONZE

PROJECT: AC BY MARRIOTT - DOWNTOWN MADISON  
202 E. WASHINGTON AVE.  
MADISON, WISCONSIN  
OWNER: 202 E. WASHINGTON LLC  
C/O: NORTH CENTRAL GROUP  
1600 ASPEN COMMONS, SUITE 200 - MIDDLETON, WISCONSIN

2014 GARY BRINK & ASSOC.  
Any duplication, reproduction, or use by any other party is prohibited unless prior written authorization is received from GARY BRINK & ASSOC or Marlot International.

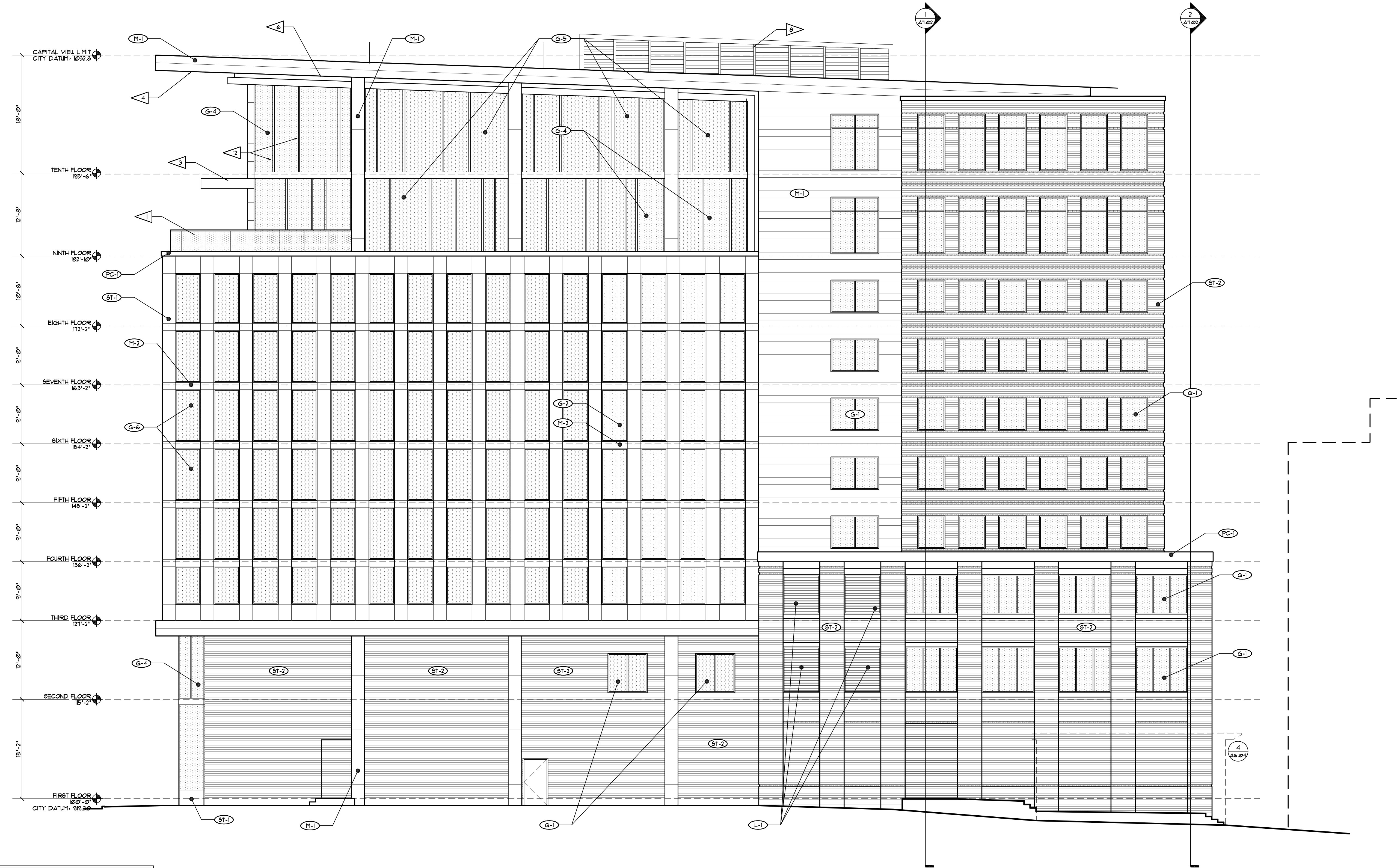
PROJECT: 201410  
DRAWN BY: AR  
DATE:  
SCALE: AS NOTED

EXTERIOR ELEVATIONS

A6.02



GARY BRINK & ASSOCIATES  
ARCHITECTS  
7780 ELMWOOD AVENUE  
MIDDLETON, WI 53562  
608-829-1750  
608-829-3056 (FAX)



- EXTERIOR ELEVATION KEY NOTES**
- GLASS GUARDRAIL WITH PRE FINISHED ALUMINUM TOP RAIL - 48" AFF.
  - HIGH-SPEED OVERHEAD DOOR.
  - 2" x 8" ALUMINUM TUBE TRELLIS STRUCTURE - BLACK ANODIZED FINISH.
  - PAINTED STEEL FRAMING 1/2" x 2x8 CROSS FRAMING, 2x10 BEAMS & 4x4 POSTS.
  - WHITE COMPOSITE METAL PANEL.
  - LED LIGHT COVE.
  - INDOOR/OUTDOOR SEE-THRU GAS FIREPLACE.
  - ROOFTOP MECHANICAL SCREENING.
  - GENERATOR ENCLOSURE 1/2" OPEN-AIR TRELLIS STRUCTURE ABOVE.
  - IVY / GREEN WALL.
  - LANDSCAPING ELEMENT - SEE LI.01 FOR MORE DETAILS.
  - 2" AND 4" MULLION WIDTHS TO BE RANDOMIZED THROUGHOUT CURTAIN WALL SYSTEM.
  - REVOLVING DOOR / MAIN ENTRY.
  - INTERNALLY LIT EXTERIOR SIGNAGE - SEE EX.01 & EX.02 FOR MORE DETAILS.
  - SHOT BLASTED CONCRETE WALL.
  - ALUMINUM FENCE AND GATE.

**1 PLAN NORTH ELEVATION**  
SCALE: 1/8" = 1'-0"

GRAPHIC	KEY	EXTERIOR FINISH DESCRIPTION	GRAPHIC	KEY	EXTERIOR FINISH DESCRIPTION	GRAPHIC	KEY	EXTERIOR FINISH DESCRIPTION	GRAPHIC	KEY	EXTERIOR FINISH DESCRIPTION
	ST-1	MASONRY FIELD MFGR: STONE PANELS SIZE: N.A. COLOR: MOCHA CREME LIMESTONE		M-1	METAL PANEL, COPINGS, FASCIAS, ETC. MFGR: DRI-DESIGN SIZE: VARIES SEE ELEVATIONS COLOR: MEDIUM BRONZE		G-2	STOREFRONT MFGR: TBD FRAME: CLEAR ANODIZED GLASS, GREY TINT		G-3	CURTAIN WALL TYPE 1 MFGR: TBD FRAME: CLEAR ANODIZED GLASS, SPANDREL
	ST-2	MASONRY FIELD MFGR: UTILITY BRICK COLOR: LIMESTONE		M-2	METAL PANEL, COPINGS, FASCIAS, ETC. MFGR: DRI-DESIGN SIZE: VARIES SEE ELEVATIONS COLOR: CLEAR ANODIZED		G-3	NOT USED		G-4	STOREFRONT MFGR: TBD FRAME: CLEAR ANODIZED GLASS, SPANDREL
	PC-1	PRECAST HEADERS MFGR: ROCKCAST SIZE: N.A. COLOR: SLATE		G-1	WINDOW MFGR: TBD FRAME: MEDIUM BRONZE GLASS: CLEAR		G-4	CURTAIN WALL TYPE 1 MFGR: TBD FRAME: CLEAR ANODIZED GLASS, CLEAR		L-1	LOUVER MFGR: TBD FRAME: MEDIUM BRONZE

PROJECT: AC BY MARRIOTT - DOWNTOWN MADISON  
202 E. WASHINGTON AVE.  
MADISON, WISCONSIN  
OWNER: 202 E. WASHINGTON LLC  
C/O: NORTH CENTRAL GROUP  
1600 ASPEN COMMONS, SUITE 200 - MIDDLETON, WISCONSIN

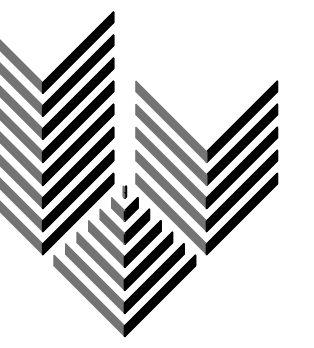
2014 GARY BRINK & ASSOC.  
Any duplication, reproduction, or use by any other party is prohibited unless prior written authorization is received from GARY BRINK & ASSOC or Marlot International.

PROJECT: 201410  
DRAWN BY: AR  
DATE:  
SCALE: AS NOTED

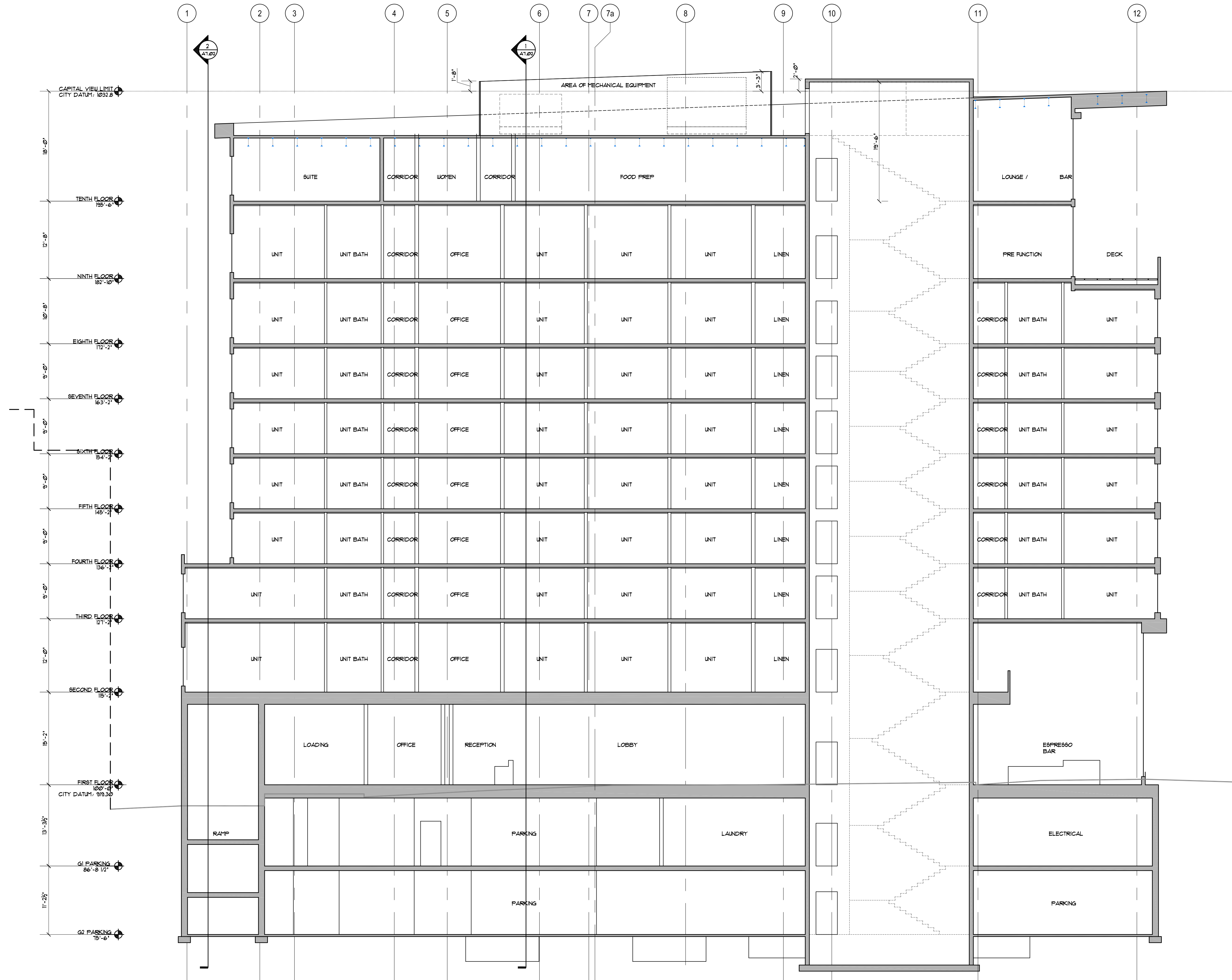
EXTERIOR ELEVATIONS

A6.03





GARY BRINK & ASSOCIATES  
ARCHITECTS  
7780 ELMWOOD AVENUE  
MIDDLETON, WI 53562  
608-829-1750  
608-829-3056 (FAX)



SECTION 1  
SCALE: 1/8"=1'-0"



PROJECT:  
**AC BY MARRIOTT - DOWNTOWN MADISON**

202 E. WASHINGTON AVE.  
MADISON, WISCONSIN

OWNER:  
**202 E. WASHINGTON LLC**  
C/O: NORTH CENTRAL GROUP  
1600 ASPEN COMMONS, SUITE 200 - MIDDLETON, WISCONSIN

2014 GARY BRINK & ASSOC.  
Any duplication, reproduction, or use by any other party is prohibited unless prior written authorization is received from GARY BRINK & ASSOC or Marlot International.

PROJECT: 201410

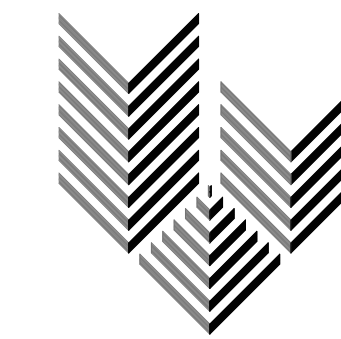
DRAWN BY: AR

DATE:

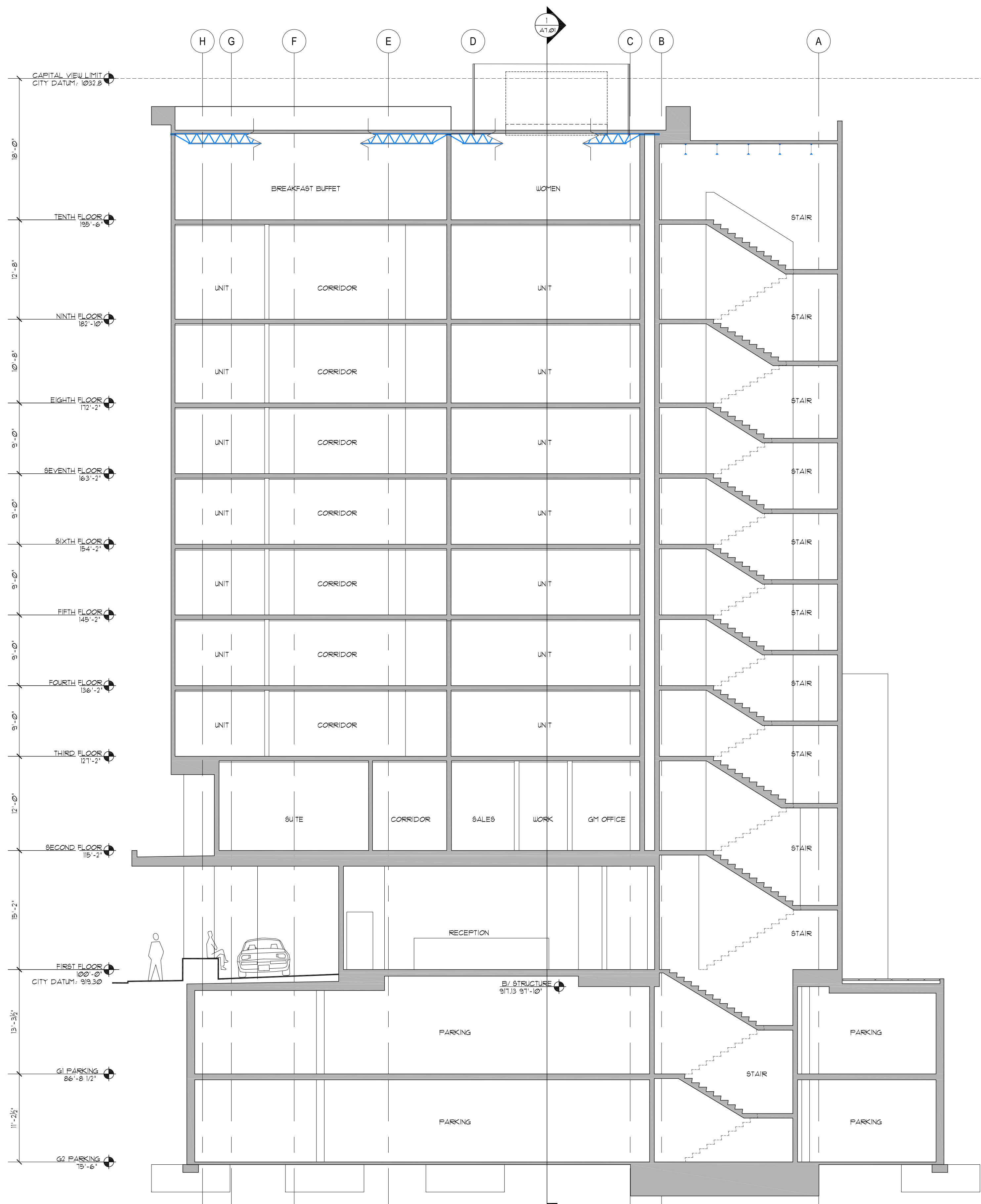
SCALE: AS NOTED

BUILDING  
SECTIONS

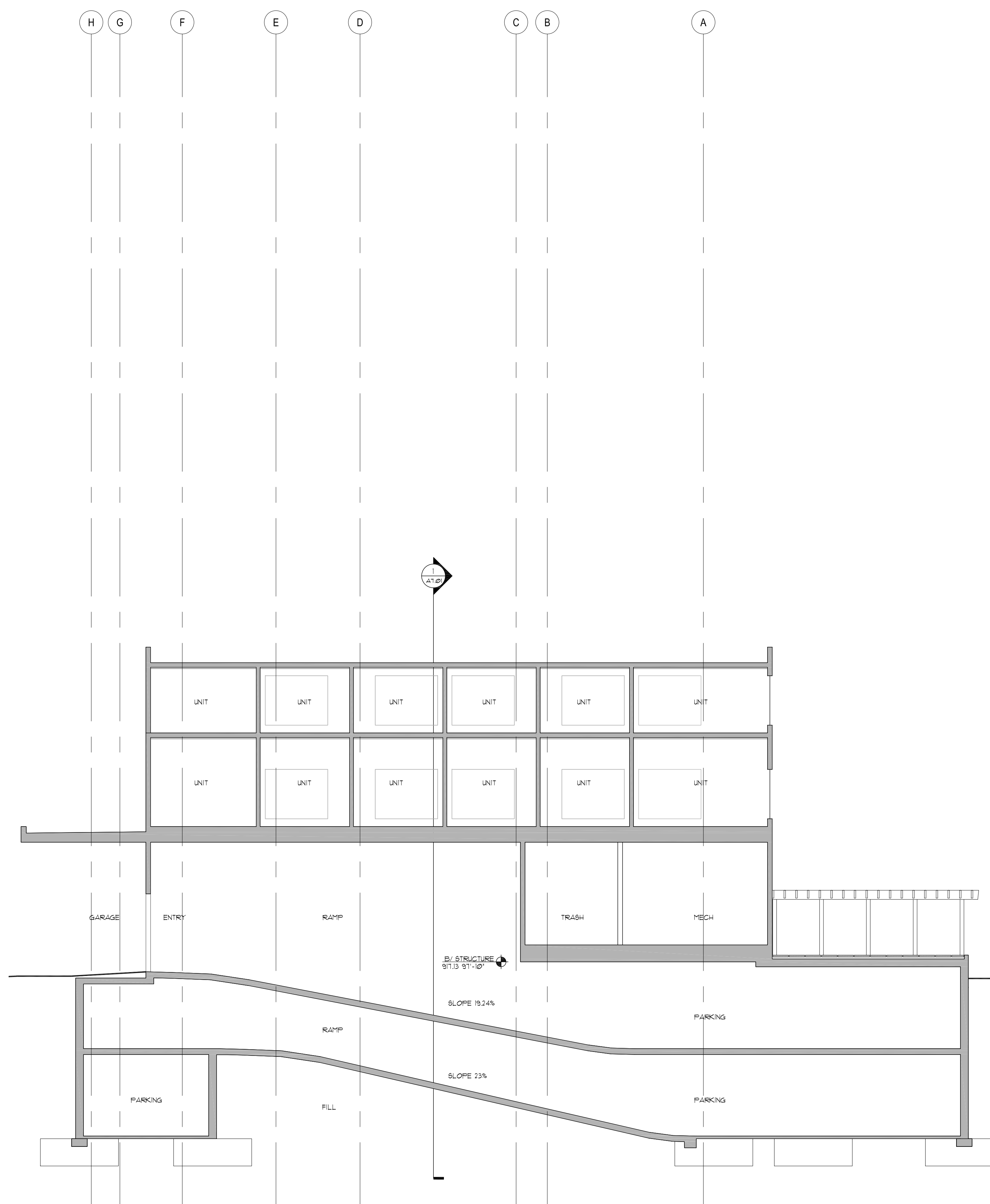
A7.01



GARY BRINK & ASSOCIATES  
ARCHITECTS  
7780 ELMWOOD AVENUE  
MIDDLETON, WI 53562  
608-829-1750  
608-829-3056 (FAX)



SECTION 1  
SCALE: 1/8"=1'-0"



SECTION 2  
SCALE: 1/8"=1'-0"

PROJECT:  
**AC BY MARRIOTT - DOWNTOWN MADISON**

2014 GARY BRINK & ASSOC.  
Any duplication, reproduction, or use by any  
other party is prohibited unless prior written  
authorization is received from GARY BRINK &  
ASSOC or Marriott International.

PROJECT: 201410  
DRAWN BY: AR  
DATE:  
SCALE: AS NOTED

202 E. WASHINGTON AV.  
MADISON, WISCONSIN  
OWNER:  
**202 E. WASHINGTON LLC**  
C/O: NORTH CENTRAL GROUP  
1600 ASPEN COMMONS, SUITE 200 - MIDDLETON, WISCONSIN

BUILDING  
SECTIONS

A7.02