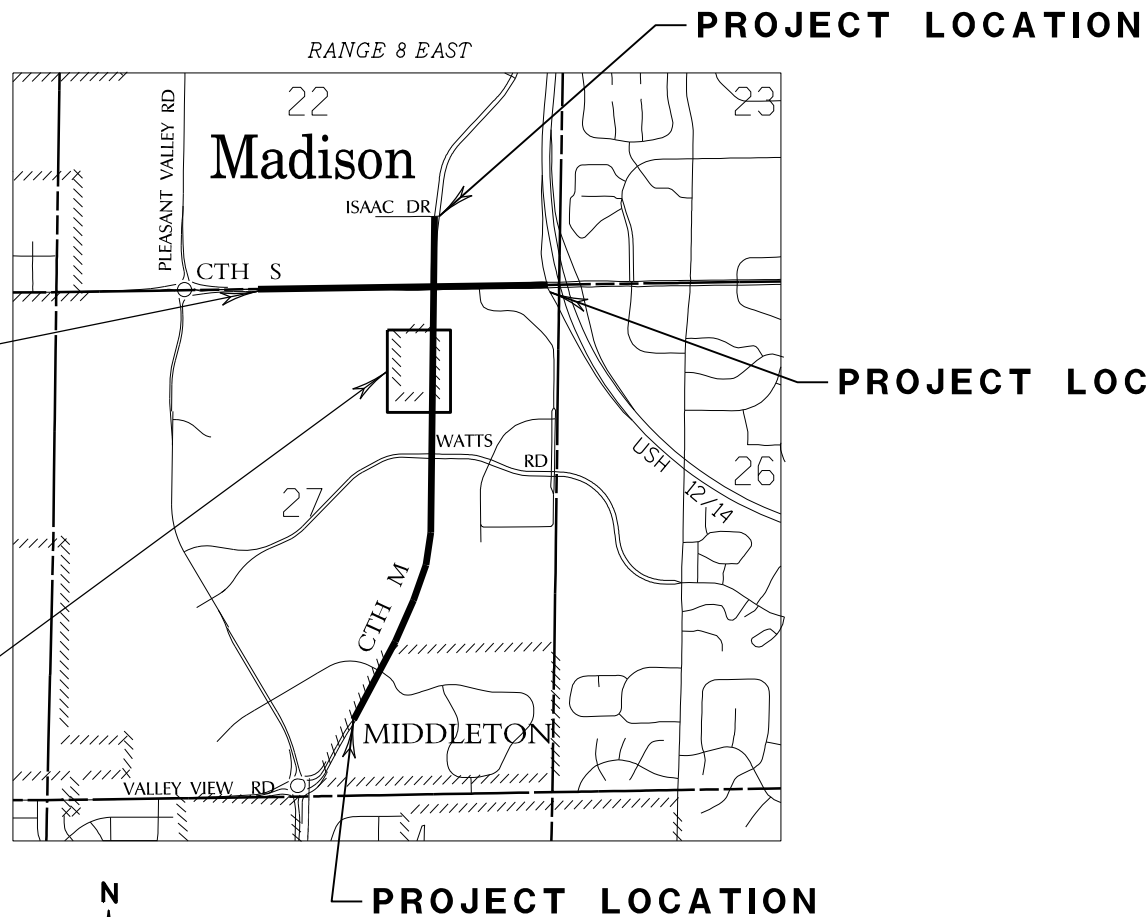
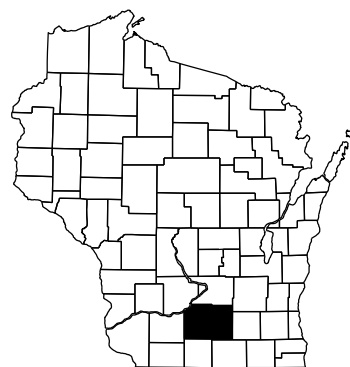


STATE OF WISCONSIN
DEPARTMENT OF TRANSPORTATION

TRANSPORTATION PROJECT PLAT TITLE SHEET

PROJECT NO. 5992-08-07
MINERAL POINT ROAD/CTH S & SOUTH JUNCTION ROAD/CTH M

CITY OF MADISON
DANE COUNTY



PROJECT LOCATION

PROJECT LOCATION

SHEET LOCATION

PROJECT LOCATION

CONVENTIONAL ABBREVIATIONS			
ACCESS POINT, DRIVEWAY CONNECTION	AP	REFERENCE LINE	R/L
ACCESS RIGHTS	AR	RELEASE OF RIGHTS	ROR
ACRES	AC.	REMAINING	REM.
AND OTHERS	ET.AL.	RIGHT-OF-WAY	R/W
CENTERLINE	C/L	SECTION	SEC.
CERTIFIED SURVEY MAP	CSM	STATION	STA
CORNER	COR.	TEMPORARY LIMITED EASEMENT	TLE
DOCUMENT	DOC.	VOLUME	V.
EASEMENT	EASE.	CURVE DATA	
HIGHWAY EASEMENT	H.E.	LONG CHORD	LCH
LAND CONTRACT	LC	LONG CHORD BEARING	LCB
MONUMENT	MON.	RADIUS	R
PAGE	P.	DEGREE OF CURVE	D
PERMANENT LIMITED EASEMENT	PLE	CENTRAL ANGLE OR DELTA	DELTA
PROPERTY LINE	P.L.	LENGTH OF CURVE	L
RECORDED AS	(100')	TANGENT	T

CONVENTIONAL SYMBOLS	
FOUND 1" IRON PIPE	⊙
FOUND 2" IRON PIPE	⊗
FOUND 3/4" REBAR	○
FOUND 1 1/4" REBAR	⊙
R/W MONUMENT	● (SET)
R/W STANDARD	▲ (SET)
SIGN	ISIGN
SECTION CORNER MONUMENT	⊙ (with 'S')
SECTION CORNER SYMBOL	⊙ (with 'S')
FEE (HATCH VARIES)	▨
TEMPORARY LIMITED EASEMENT	▨ (dashed)
PERMANENT LIMITED EASEMENT	▨ (solid)
R/W BOUNDARY POINT	⊙ (with 'B')
PARCEL NUMBER	⊙ (with 'P')
UTILITY PARCEL NUMBER	⊙ (with 'U')
SIGN NUMBER (OFF PREMISE)	⊙ (with 'S')
BUILDING	⊠

CONVENTIONAL UTILITY SYMBOLS

WATER	—W—
GAS	—G—
TELEPHONE	—T—
OVERHEAD	—OH—
TRANSMISSION LINES	—
ELECTRIC	—E—
CABLE TELEVISION	—TV—
FIBER OPTIC	—FO—
SANITARY SEWER	—SAN—
STORM SEWER	—SS—
NON COMPENSABLE	—
COMPENSABLE	—

NOTES:

COORDINATES AND BEARINGS SHOWN ON THIS PLAT ARE REFERENCED TO THE WISCONSIN COUNTY COORDINATE SYSTEM-DANE COUNTY, THE COORDINATES SHOWN ARE GROUND COORDINATES AND ARE TO BE USED AS GROUND VALUES ON THIS PLAT.

RIGHT-OF-WAY MONUMENTS ARE TYPE 2 AND WILL BE PLACED PRIOR TO THE COMPLETION OF THE PROJECT.

RIGHT-OF-WAY BOUNDARIES ARE DEFINED WITH COURSES OF THE PERIMETER OF THE HIGHWAY LANDS REFERENCED TO THE U.S. PUBLIC LAND SURVEY SYSTEM OR OTHER "SURVEYS OF PUBLIC RECORD".

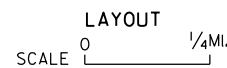
PROPERTY LINES SHOWN ON THIS PLAT ARE DRAWN FROM DATA DERIVED FROM MAPS AND DOCUMENTS OF PUBLIC RECORD AND/OR EXISTING OCCUPATIONAL LINES. THIS PLAT MAY NOT BE A TRUE REPRESENTATION OF EXISTING PROPERTY LINES, EXCLUDING RIGHT-OF-WAY LINES, AND SHOULD NOT BE USED AS A SUBSTITUTE FOR AN ACCURATE FIELD SURVEY.

BASIS OF RIGHT-OF-WAY

- CSM 7978
- CSM 8013
- CSM 9932
- CSM 11867
- COMMERCE SQUARE
- DANE COUNTY HWY M PROJECT 1204
- HILLPOINT POND
- JUNCTION RIDGE
- MENARD COMMERCIAL PARK
- MIDDLETON CEMETERY
- UNIVERSITY RESEARCH PARK-PIONEER

DIMENSIONING FOR THE NEW RIGHT-OF-WAY IS MEASURED ALONG AND PERPENDICULAR TO NEW REFERENCE LINES.

A **TEMPORARY LIMITED EASEMENT (TLE)** IS A RIGHT FOR CONSTRUCTION PURPOSES, AS DEFINED HEREIN, INCLUDING THE RIGHT TO OPERATE NECESSARY EQUIPMENT THEREON AND THE RIGHT OF INGRESS AND EGRESS, AS LONG AS REQUIRED FOR SUCH PUBLIC PURPOSE, INCLUDING THE RIGHT TO PRESERVE, PROTECT, REMOVE, OR PLANT THEREON ANY VEGETATION THAT THE HIGHWAY AUTHORITIES MAY DEEM NECESSARY OR DESIRABLE. ALL TLES EXPIRE AT THE COMPLETION OF THE CONSTRUCTION PROJECT FOR WHICH THIS INSTRUMENT IS GIVEN.



RESERVED FOR REGISTER OF DEEDS
PROJECT NUMBER 5992-08-07 - 4.01
SHEET 2 OF 2
AMENDMENT NO: