

SEAL:

PATRICK G. BLEES

DATE ISSUED: _____
 DATE: A-9014
 REG. NO. _____



EAST TOWNE MALL
 80 EAST TOWN MALL
 MADISON, WI 53704

FRANCHISE STORE

PERMIT SET

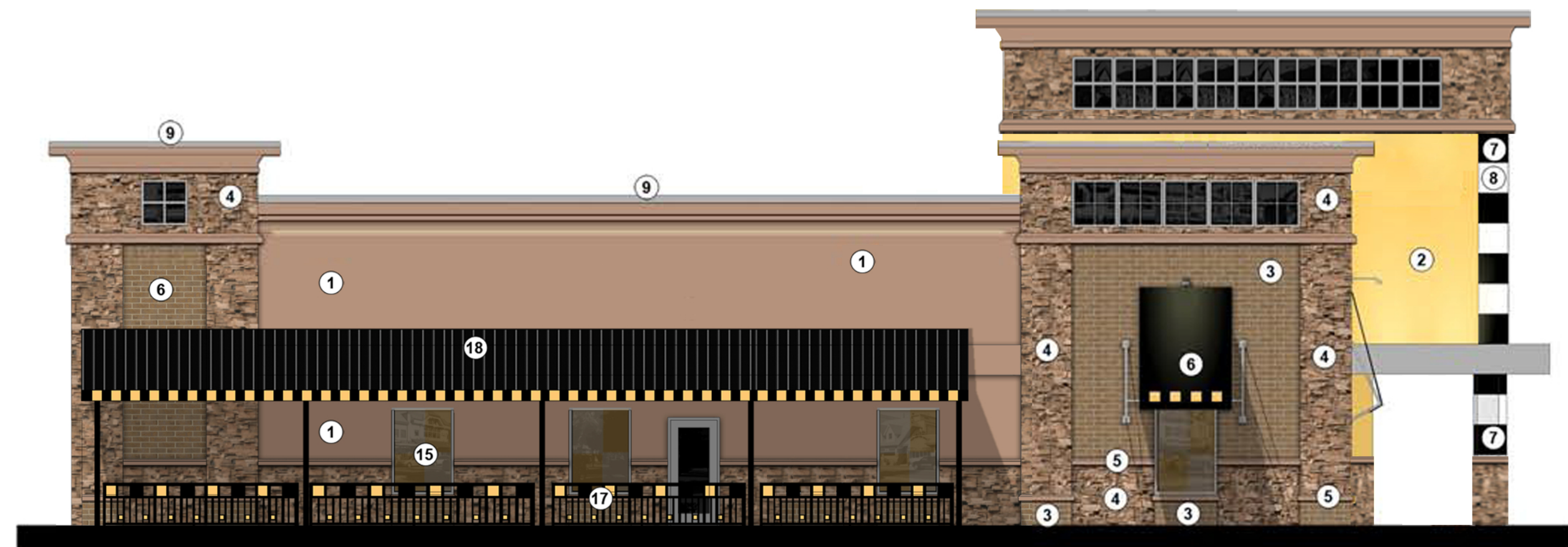
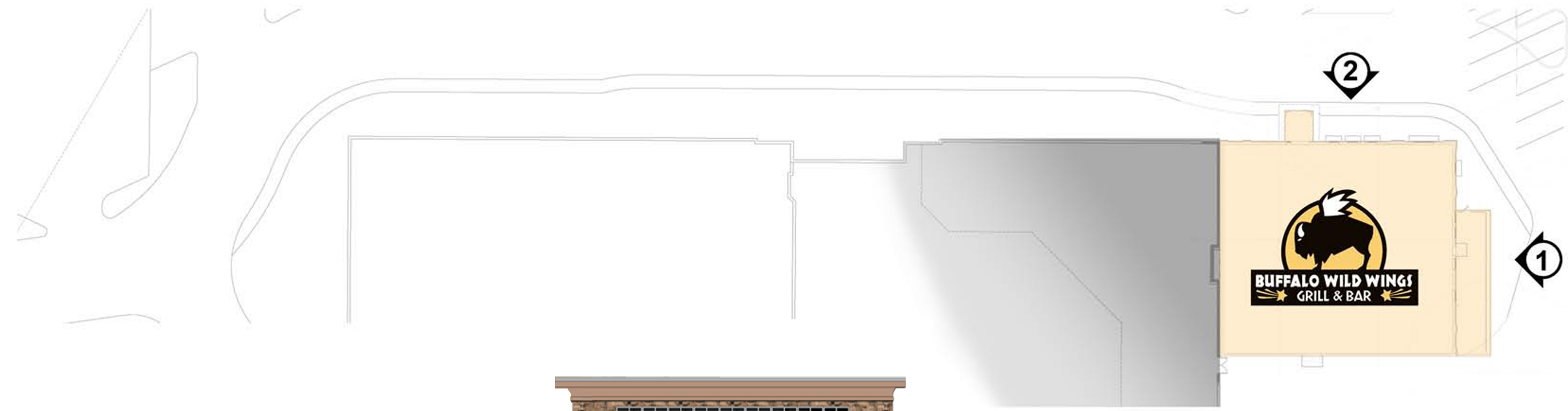
REVISIONS:

NO.	DATE:	BY:

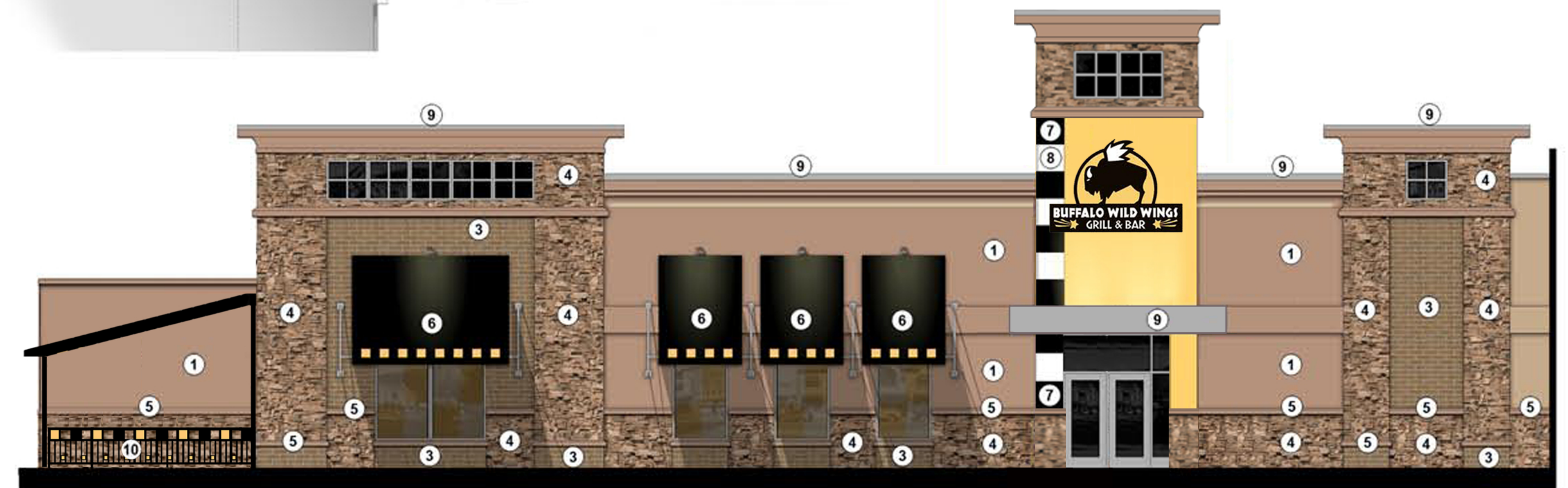
PROJECT NO: 07199.001
 DRAWN BY: _____

MATERIAL KEY

- ① EIFS: DRYVIT EIFS "#139 ADOBE ACCENT" WITH SANDPEBBLE FINISH TO MATCH EXISTING
- ② EIFS: DRYVIT EIFS "SW SOCIAL BUTTERFLY" WITH SANDPEBBLE FINISH
- ③ BRICK: ENDICOTT - MEDIUM IRONSPOT 77 WIRECUT
- ④ CULTURED STONE VENEER "MOJAVE" TO MATCH EXISTING
- ⑤ PRECAST SILL: MASTERBLOCK DRIFTWOOD
- ⑥ FABRIC AWNING "JET BLACK 4608/6008" SUNBRELLA WITH PANTONE #116 COATED YELLOW SQUARES
- ⑦ PREFINISHED ALUMINUM PANELS "BLACK" UNA-CLAD
- ⑧ PREFINISHED ALUMINUM PANELS "BONE WHITE" UNA-CLAD
- ⑨ PREFINISHED METAL CAP FLASHING "SILVER METALLIC" UNA-CLAD
- ⑩ BLACK POWDER COATED PATIO RAIL PAINTED WITH GLOSS YELLOW SQUARES



1 NORTH ELEVATION



2 WEST ELEVATION



SCALE: 1" = 60' (11"X17")
 SCALE: 1" = 30' (24"X36")

Parking Lot Plan Site Information Block (BWW Only)

Site Address: 89 East Towne Mall
 Site acreage (total): 5.10

Number of building stories (above grade): 2
 Building height: 22'-2"
 DOC type of construction: 5A
 Total Square Footage of buildings: 7,200

Use of property: Restaurant
 Gross square feet of office: 73 SF
 Gross square feet of retail area: N/A
 Number of employees in warehouse: N/A
 Number of employees in total: 15
 Capacity of restaurant/place of assembly: 347

Number of bicycle stalls shown: 12

Number of parking stalls:

Small car	Shown
Large car	N/A
Accessible	111
Total	5

Number of trees shown: SEE LANDSCAPE PLAN

Calkins Engineering, LLC
 5010 Vogel Road
 Lincoln, Nebraska 68502
 (608) 638-0444

DATE: 02-15-2008
 REVISIONS:
 02-26-08
 02-29-08
 03-17-08

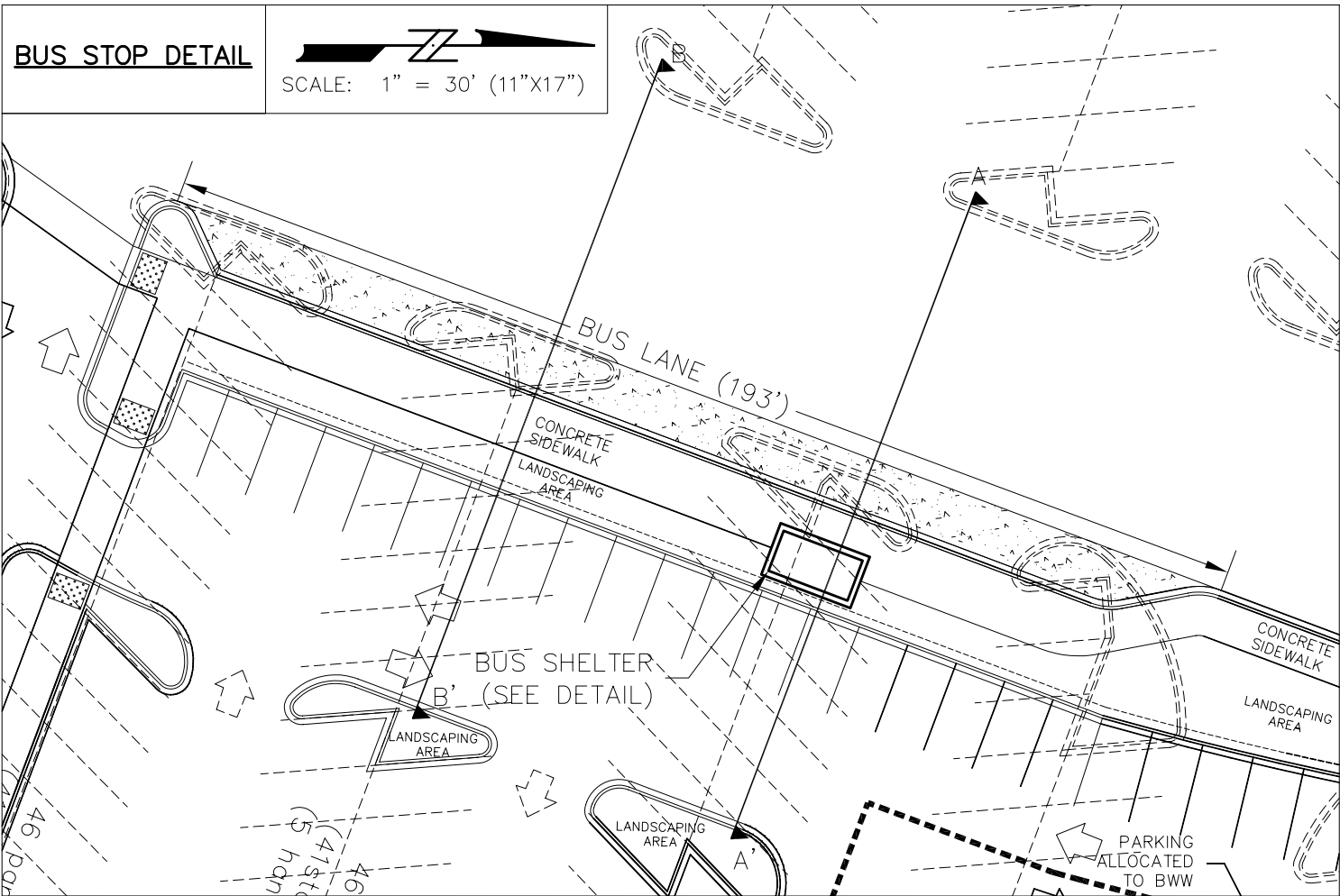
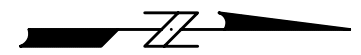
EAST TOWNE MALL
 SITE PLAN

DRAWING NAME: TR105\Bases\Bases.dwg
 FN: TR105

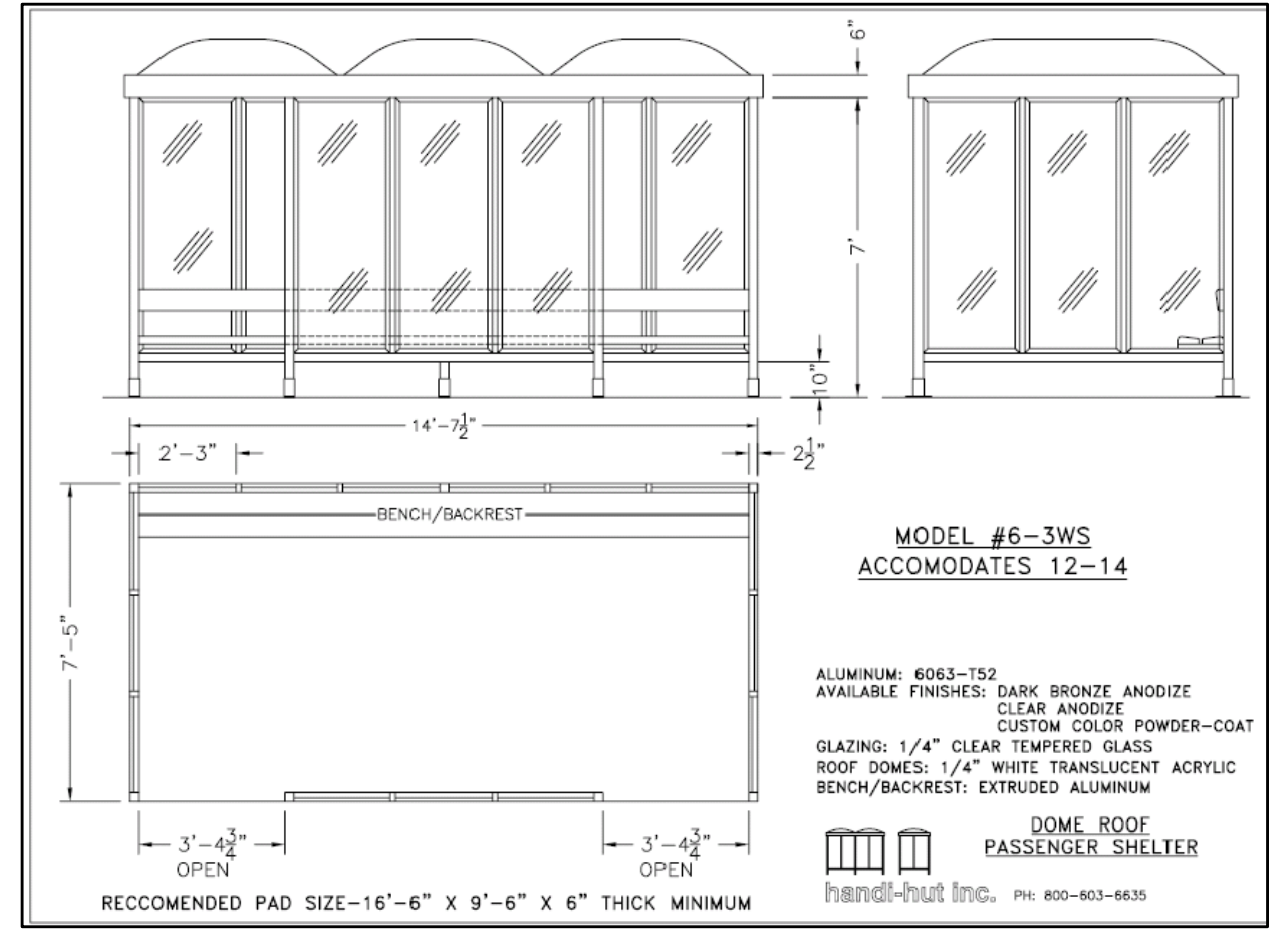
Calkins Engineering, LLC
 Civil Engineers & Land Surveyors

BUS STOP DETAIL

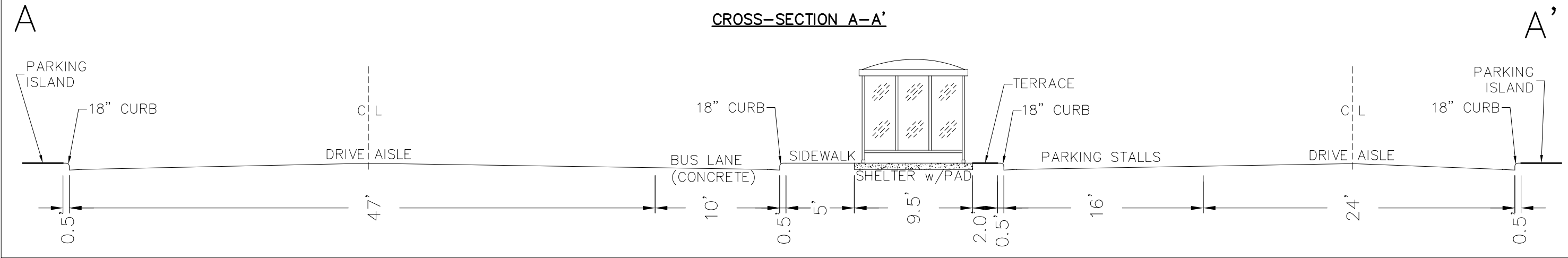
SCALE: 1" = 30' (11"x17")



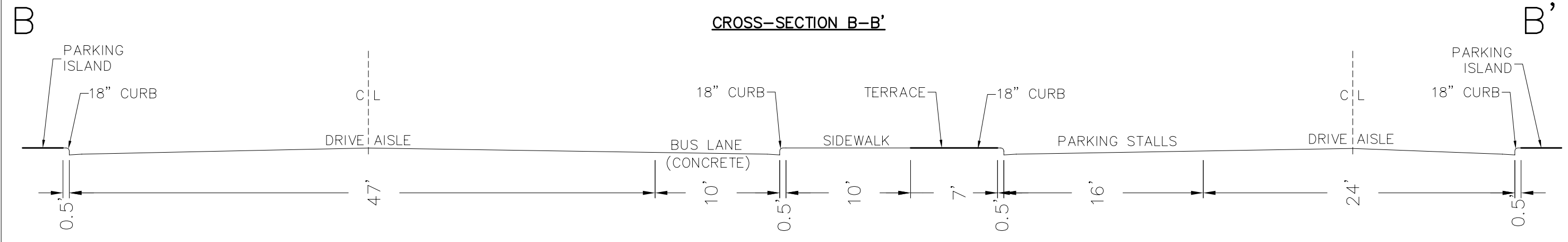
BUS SHELTER DETAIL



CROSS-SECTION A-A'



CROSS-SECTION B-B'



Calkins Engineering, LLC
5010 Vogel Road
Fayetteville, NC 27178
(608) 658-0444

DATE: 02-15-2008
REVISIONS:
02-26-08
02-29-08
03-18-08

EAST TOWNE MALL
BUS STOP DETAILS & CROSS SECTIONS

DRAWING NAME: TR05 Base Base.dwg
FN: TR05

Calkins Engineering, LLC
Civil Engineers & Land Surveyors

SEAL:

PATRICK G. BLEES, ARCHITECT

03-19-08

DATE ISSUED

A-9014

REG. NO.



CBL & ASSOC PROPERTIES, INC
EAST TOWNE MALL
 2030 HAMILTON PLACE BLVD.
 CHATTANOOGA, TN 37421
 PHONE (423) 510-2504 FAX (423) 893-4272
 CONTACT: DON POBST

EAST TOWNE MALL
 240 EAST TOWNE MALL
 MADISON, WI 53704

FRANCHISE STORE

SHEET TITLE:
 BUILDING FOUNDATION
 LANDSCAPING PLAN
 BID PACKAGE 1
PERMIT SET

REVISIONS:

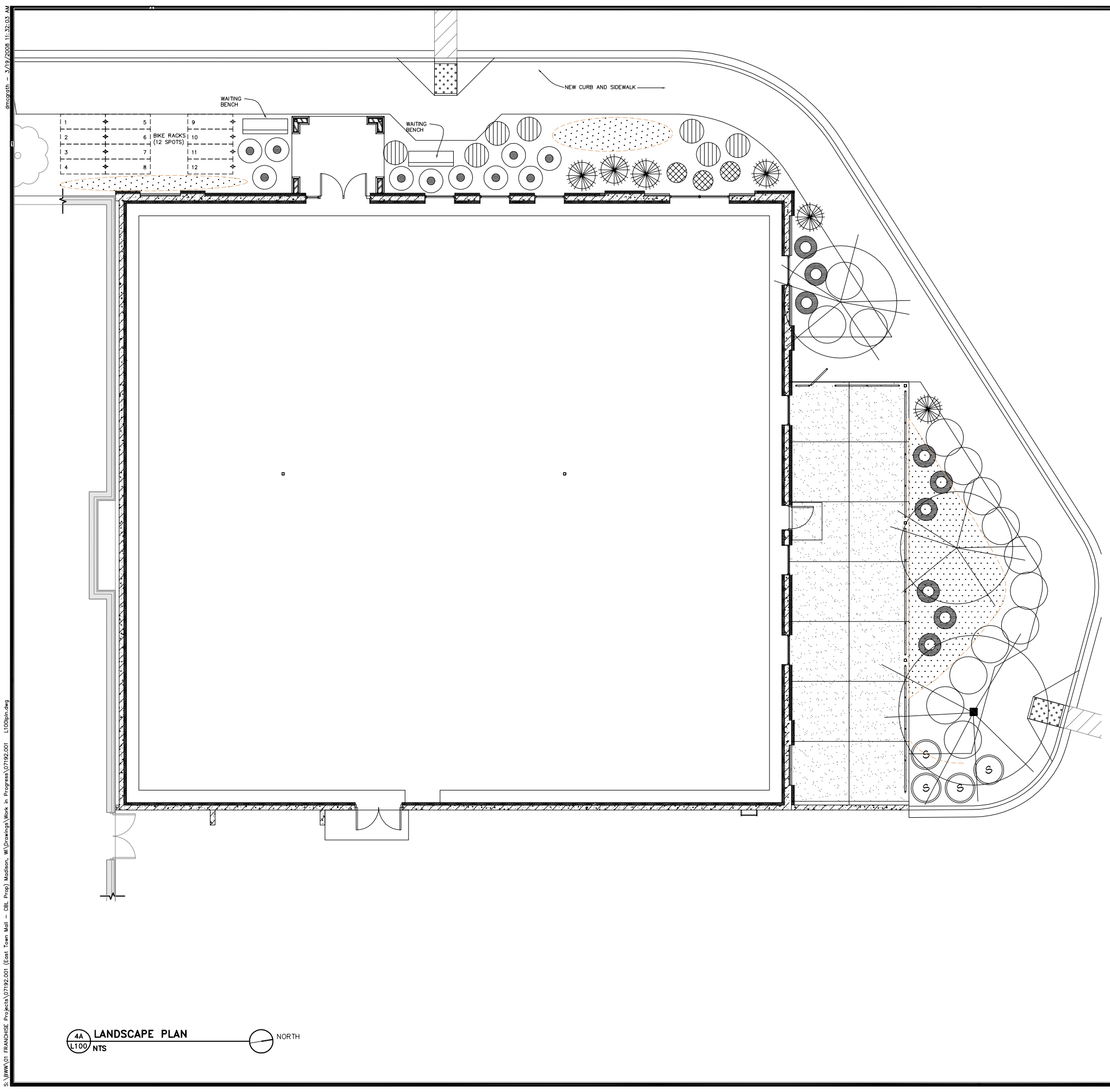
NO.	DATE:	BY:

PROJECT NO: 07192.001
 DRAWN BY: DRM

L100

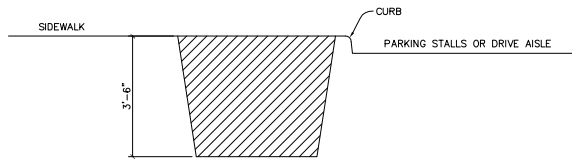
BUILDING FOUNDATION PLANT MATERIAL SCHEDULE			
SYMBOL	COMMON NAME	SIZE	QTY
TREES			
	RIVER BIRCH CLUMP	12" BB	1
	SARGENT CRAB	2" BB	2
SHRUBS / EVERGREENS			
	AUTUMN BRILLIANCE SERVICEBERRY	5" BB	4
	DWARF BURNING BUSH	24" BB	7
	COMPACT CRANBERRY BUSH VIBURNUM	24" BB	3
	GOLD MOUND SPIREA	18" BB	10
	GOLD FLAME SPIREA	15" BB	9
	SPREADING COTONEASTER	18" BB	7
	BLUE RUG JUNIPERS	2 GAL	14
PERENNIALS			
	BLACK EYED SUSAN	1 QT	15
	STELLA DE ORO DAYLILY	1 QT	15
	SUMMER WINE DAYLILY	1 QT	15
	AUTUMN JOY SEDUM	1 QT	20
	FANAL ASTILBE	1 QT	20
	MOONBEAM COREOPSIS	1 QT	20
	PURPLE PALACE CORAL BELLS	1 QT	20
	LITTLE BLUESTEM	1 QT	20
	DWARF FOUNTAIN GRASS	1 QT	20

NOTE:
 1. PERENNIAL BEDS ARE TO HAVE VINYL EDGING (BLACK DIAMOND OR EQUAL), WITH SHREDED HARDWOOD BARK MULCH TO A DEPTH OF 1-1/2".
 2. ALL OTHER LANDSCAPED AREAS TO HAVE #2 WASHED STONE MULCH AT A DEPTH OF 3" OVER WEED BARRIER FABRIC.



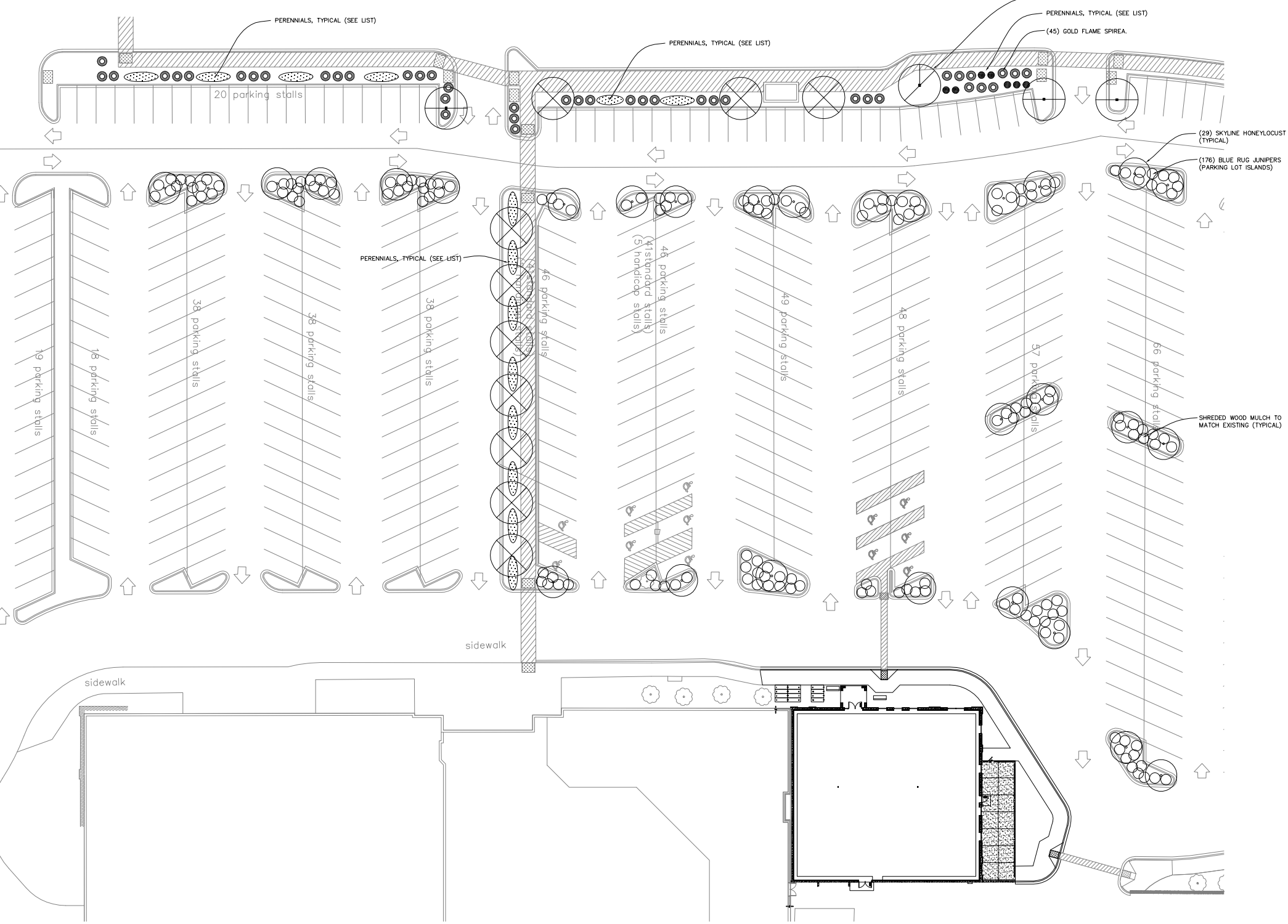
S:\WORK\01 FRANCHISE Projects\07192.001 (East Town Mall - CBL Prop.) Madison, WI Drawings\Work in Progress\07192.001 L100.dwg
 5/19/2008 11:35:03 AM

S:\WORK\01 FRANCHISE Projects\07192.001 (East Town Mall - CBL Prop.) Madison, WI Drawings\Work in Progress\07192.001 L101b1.dwg
 3/19/2008 11:35:36 AM



PLANTING BED PREPARATION (TYPICAL) - INCLUDES PARKING LOT ISLANDS
 1. REMOVE AND DISPOSE OF SUBSOIL (MINIMUM OF 3'-6" BELOW FINISH GRADE).
 2. FURNISH AND INSTALL PLANTING SOIL (1/3 TOPSOIL, 1/3 COMPOST, 1/3 SAND).
 3. FURNISH AND INSTALL PLANT MATERIAL PER PLANT SCHEDULE.
 4. FURNISH AND INSTALL MULCH PER PLAN.

1A
L101
PLANTING BED
 SCALE: 1/4"=1'-0"



BUILDING FOUNDATION PLANT MATERIAL SCHEDULE			
SYMBOL	COMMON NAME	SIZE	QTY
TREES			
○	GRINKO	2" BB	3
○	SKYLINE HONEYLOCUST	2-1/2" BB	29
○	RIVER BIRCH CLUMP	12" BB	1
⊗	ADIRONDACK FLOWERING CRAB	2" BB	10
SHRUBS / EVERGREENS			
●	GOLD FLAME SPIREA	10" BB	42
●	SPREADING COTONEASTER	18" BB	7
○	BLUE RUG JUNIPERS: PARKING LOT ISLANDS	1 GAL	176
PERENNIALS - 2" O.C.			
□	BLACK EYED SUSAN	1 QT	85
□	STELLA DE ORO DAYLILY	1 QT	90
□	SUMMER WINE DAYLILY	1 QT	90
□	AUTUMN JOY SEDUM	1 QT	90
□	PRAIRIE DROPSIED	1 QT	85
□	JUNE GRASS	1 QT	90
□	TUFTED HAIR GRASS	1 QT	90
□	LITTLE BLUESTEM	1 QT	90

NOTE:
 1. PARKING LOT ISLANDS: SHREDED WOOD MULCH TO MATCH EXISTING PLANTERS.

PATRICK G. BLEES
 architecture · planning · interior design
 PATRICK G. BLEES, ARCHITECT
 219 N. 2ND ST., SUITE 301
 MINNEAPOLIS, MN 55401
 PHONE: (612) 338-6677
 FAX: (612) 338-2995
 E-MAIL: info@cmarch.com
 CONTACT: CHRISTOPHER R. OLSON

CONSULTANTS:
ERICKSEN EELISON & ASSOCIATES, INC.
 2635 UNIVERSITY AVENUE, STE 200
 ST. PAUL, MN 55115-1231
 PHONE: (651) 632-2300
 FAX: (651) 632-2397
ADVANCED STRUCTURAL TECHNOLOGIES, INC.
 2626 E. 82ND STREET, STE 235
 BLOOMINGTON, MN 55425
 PHONE: (952) 854-9302
 FAX: (952) 854-9690
CALKINS ENGINEERING, LLC.
 5010 VOGES ROAD
 MADISON, WI 53718
 PHONE: (608) 838-0444
 FAX: (608) 838-0445
BLAIR LANDSCAPING
 3030 GATEWAY PLACE
 MADISON, WI 53704
 PHONE: (608) 255-1920

SEAL:
 PATRICK G. BLEES, ARCHITECT
 03-19-08
 DATE ISSUED
 A-9014
 REG. NO.



CBL & ASSOC PROPERTIES, INC
EAST TOWNE MALL
 2030 HAMILTON PLACE BLVD.
 CHARLETTANVILLE, TN 37421
 PHONE (423) 510-2504 FAX (423) 893-4272
 CONTACT: DON POBST

EAST TOWNE MALL
 240 EAST TOWNE MALL
 MADISON, WI 53704

FRANCHISE STORE
 SHEET TITLE:
 LANDSCAPE PLAN
 BID PACKAGE 2
PERMIT SET

REVISIONS:

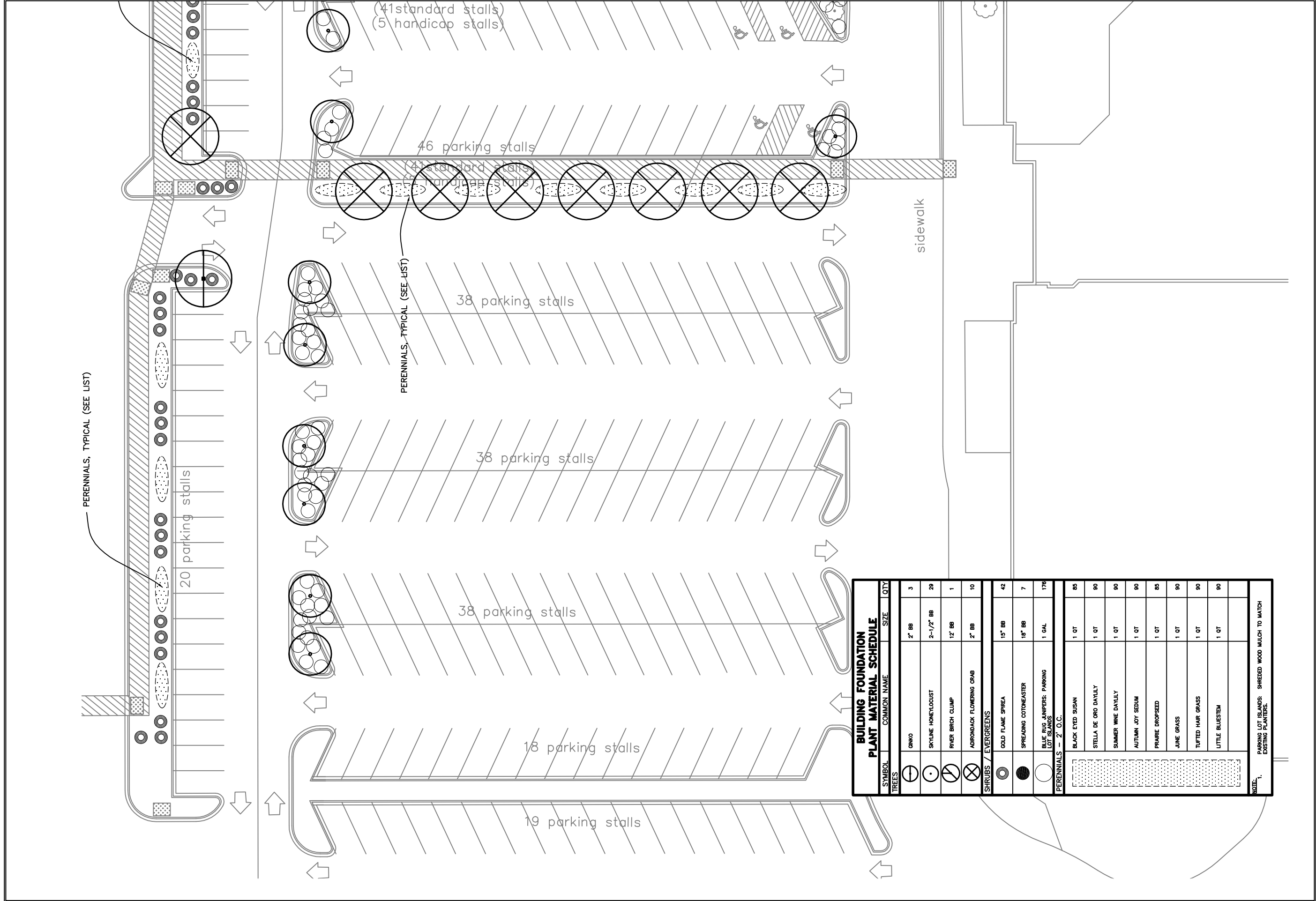
NO.	DATE	BY:

PROJECT NO: 07192.001
 DRAWN BY: DRM

L101

1
L101
LANDSCAPING PLAN
 SCALE: 1"=20'-0"





BUILDING FOUNDATION PLANT MATERIAL SCHEDULE			
SYMBOL	COMMON NAME	SIZE	QTY
TREES			
⊕	GINKGO	2' BB	3
⊙	SKYLINE HONEYLOCUST	2-1/2" BB	20
⊗	RIVER BIRCH CLUMP	12' BB	1
⊗	ADIRONDACK FLOWERING CRAB	2' BB	10
SHRUBS / EVERGREENS			
⊙	GOLD FLAME SPIREA	15" BB	42
●	SPREADING COTONEASTER	18" BB	7
○	BLUE RIG JUMPERS: PARKING LOT ISLANDS	1 GAL	176
PERENNIALS - 2' O.C.			
⊙	BLACK EYED SUSAN	1 QT	85
⊙	STELLA DE ORO DAYLILY	1 QT	90
⊙	SUMMER WINE DAYLILY	1 QT	90
⊙	AUTUMN JOY SEDUM	1 QT	90
⊙	PRAIRIE DROPSEED	1 QT	85
⊙	JUNE GRASS	1 QT	90
⊙	TUFTED HAIR GRASS	1 QT	90
⊙	LITTLE BLUESTEM	1 QT	90

NOTE: 1. PARKING LOT ISLANDS: SHREDED WOOD MULCH TO MATCH EXISTING PLANTERS.

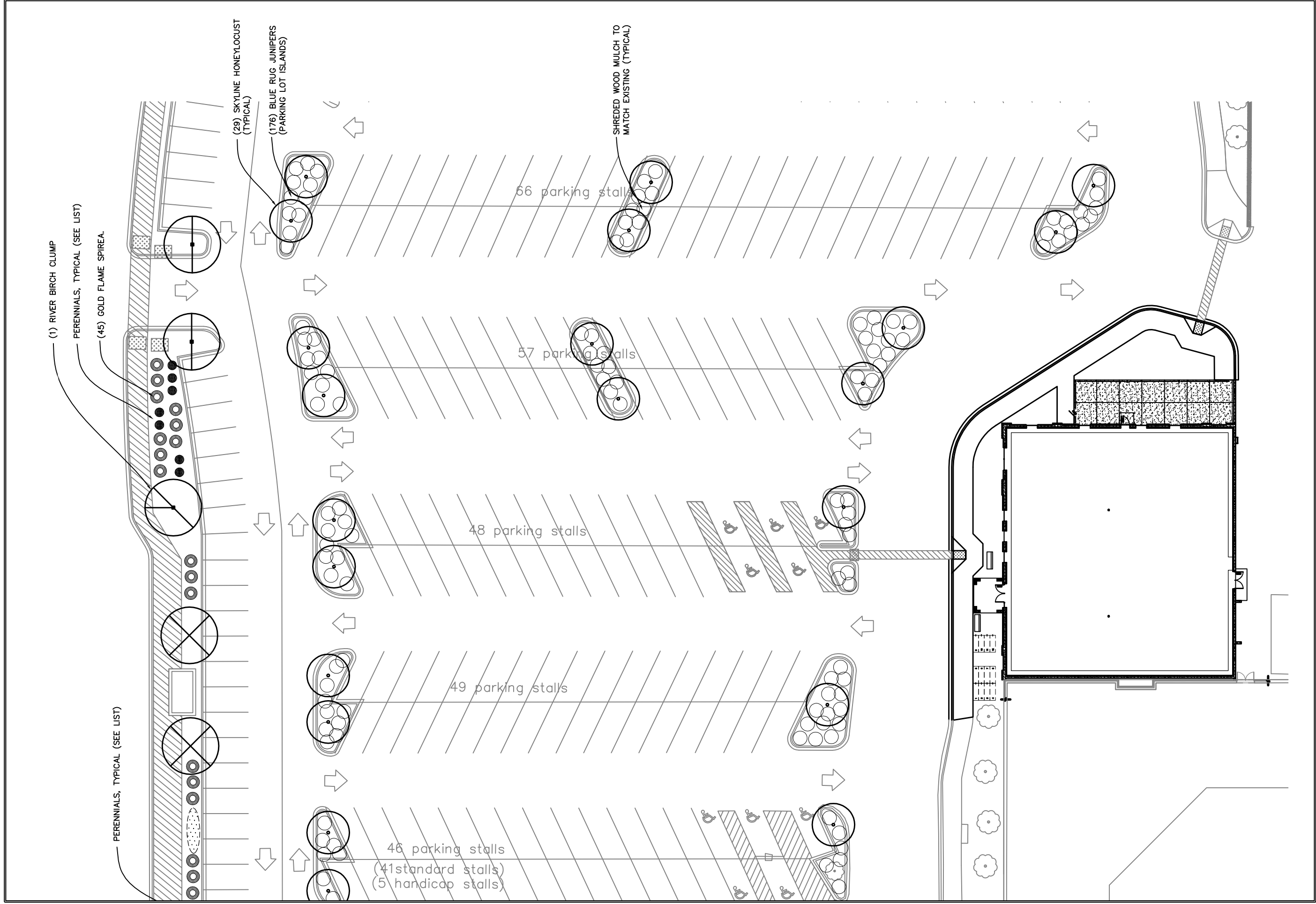
CBL & ASSOCIATES PROPERTIES, INC.

SHELL BUILDING
 Buffalo Wild Wings
 240 East Towne Mall
 Madison, WI 53704

Enlarged Landscape Plan

PROJ MGR: in
 DRAWN BY: drn
 DATE: 03-18-08
 PROJ NO: 07192.001

101A



CBL & ASSOCIATES PROPERTIES, INC.

SHELL BUILDING
Buffalo Wild Wings
240 East Towne Mall
Madison, WI 53704

Enlarged Landscape Plan

PROJ MGR: in
DRAWN BY: drm
DATE: 03-18-08
PROJ NO: 07192.001

101B