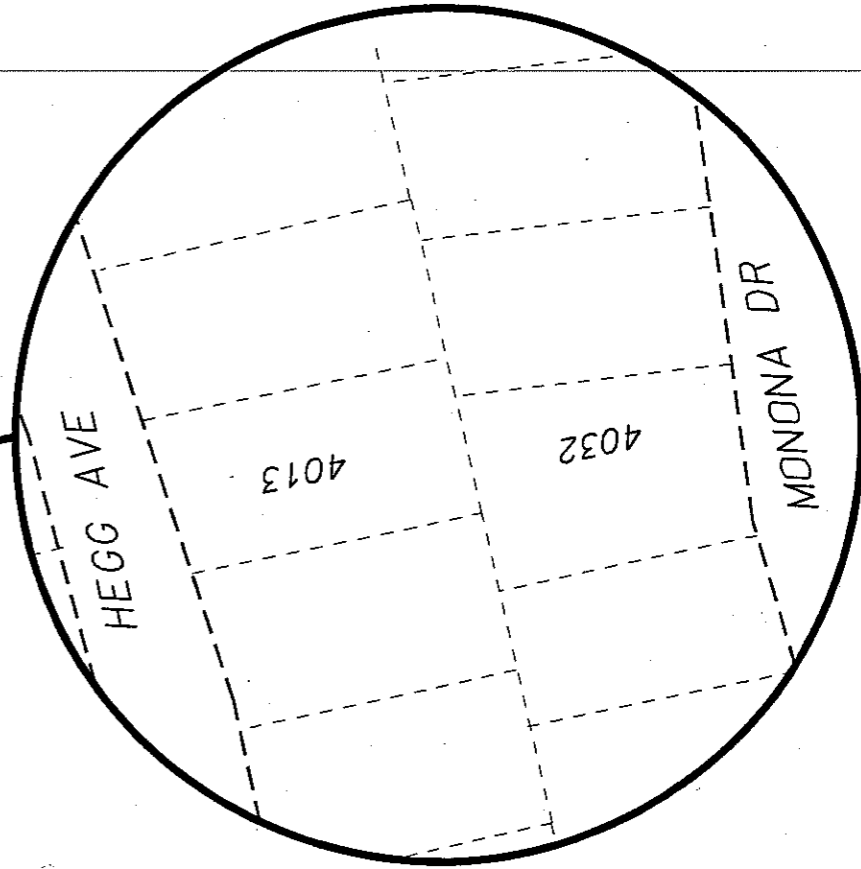


PROJECT LOCATION



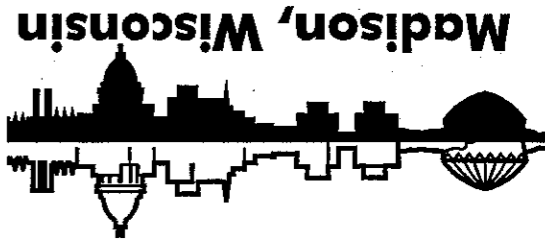
CITY PROJECT NO. 53B1989

LAKE EDGE LUTHERAN CHURCH SEWER RELOCATION

CITY OF MADISON CITY ENGINEERING DIVISION DEPARTMENT OF PUBLIC WORKS PLAN OF PROPOSED IMPROVEMENT

INDEX OF SHEETS

SHEET NO.	TITLE
1	SANITARY EASEMENT
2	OVERALL
3	OVERALL



PUBLIC IMPROVEMENT PROJECT APPROVED
APRIL 20, 2004
BY THE COMMON COUNCIL
OF MADISON, WISCONSIN

Maryellen O'Brien 5/12/04
City Clerk

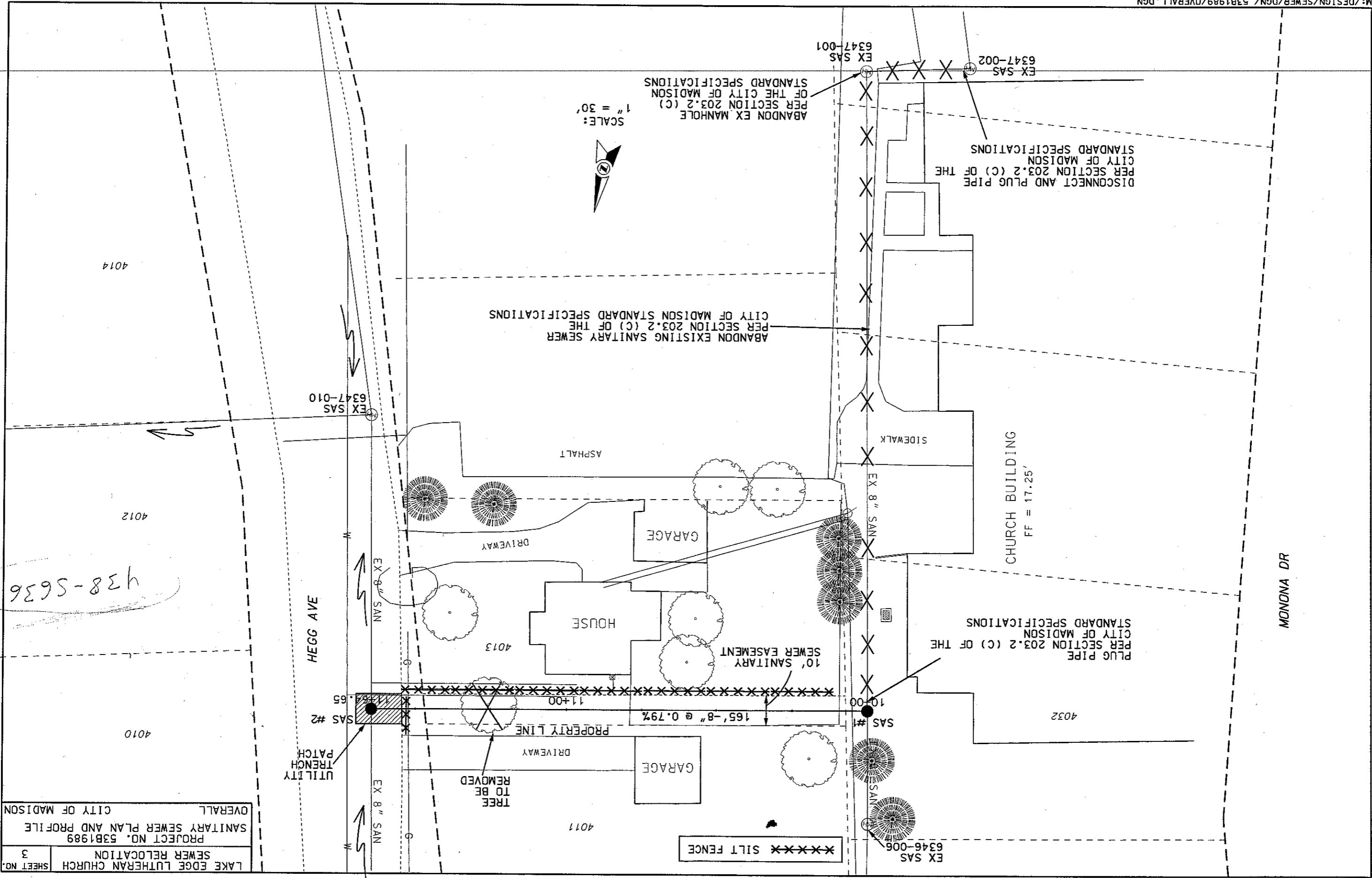
PUBLIC IMPROVEMENT DESIGN
APPROVED BY:

[Signature] 5/11/04
City Engineer

SANITARY SEWER
DESIGNED BY:

WISCONSIN PROFESSIONAL ENGINEER
MADISON
E-33979
M.D. [Signature]

5/11/04

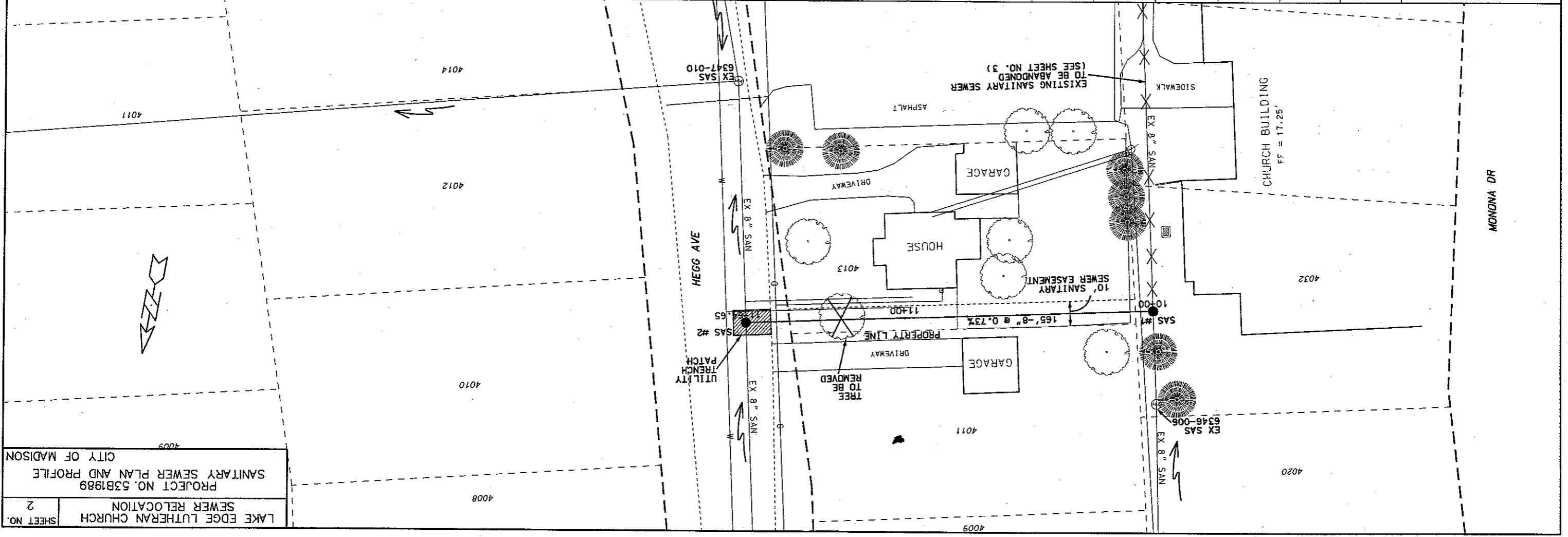
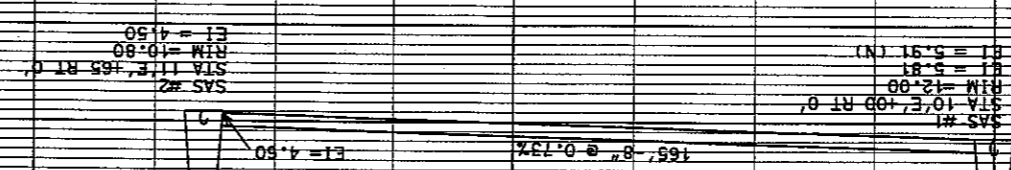


LAKE EDGE LUTHERAN CHURCH
SEWER RELOCATION
SHEET NO. 3

PROJECT NO. 5381989
SANITARY SEWER PLAN AND PROFILE

OVERALL
CITY OF MADISON

14+00	3+50	13+00	2+50	12+00	1+50	11+00	0+50	10+00	9+50	9+00
-15										
-10										
-5										
0										
5										
10										
15										
20										
25										



LAKE EDGE LUTHERAN CHURCH
SEWER RELOCATION
SHEET NO. 2

PROJECT NO. 53B1989
SANITARY SEWER PLAN AND PROFILE
CITY OF MADISON