

WISCONSIN GREENHOUSE COMPANY

2190 Pennsylvania Avenue
Madison, Wisconsin 53704



About us



Pennsylvania Ave



Adjacent Hooper Corporation Building



Adjacent 5Nines Storage Office



Industrial corridor of Pennsylvania Avenue

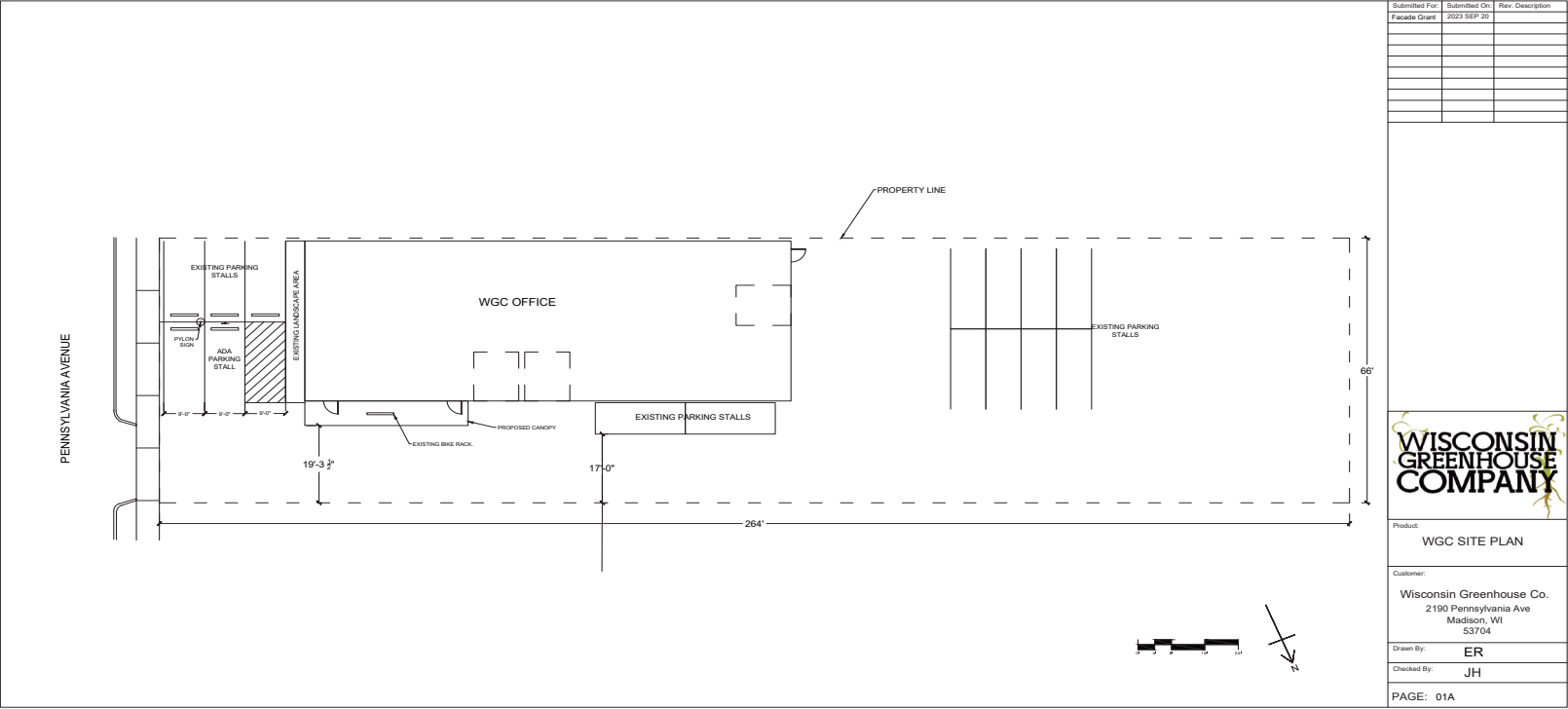


Disruptive railroad crossings

Existing Building



Aerial View



Our vision

Redesign the existing facade with a modern and naturalistic approach using “Vesta Steel Siding”



‘Coal’

Vesta Steel Siding

‘Aged Walnut’

Vesta Steel Siding

Iconic modern look, engineered to last

Made from recycled material and is 100% recyclable

Natural, variegated woodgrain, without any maintenance

Unmatched impact resistance that does not weather or crack

Reduces carbon footprint



Coal siding used on commercial building



Coal facade on commercial building



Coal Vesta Steel Siding
bold hues and realistic woodgreain finishes

Proposed Canopy

The canopy is intended to shelter visitors from any outdoor elements. The canopy is constructed with steel pilings that will support the structure. The canopy itself will be made of aluminum extrusions that will hold in place the greenhouse glazing to represent the system that we currently use for our projects.

