

DECKER PROPERTIES,
INC.

CATALINA CROSSING
APARTMENTS

PROGRESS DOCUMENTS

These documents reflect progress and intent and may be subject to change, including additional detail. These are not final construction documents and should not be used for final bidding or construction-related purposes.

DATE OF ISSUANCE 17 FEBRUARY 2016

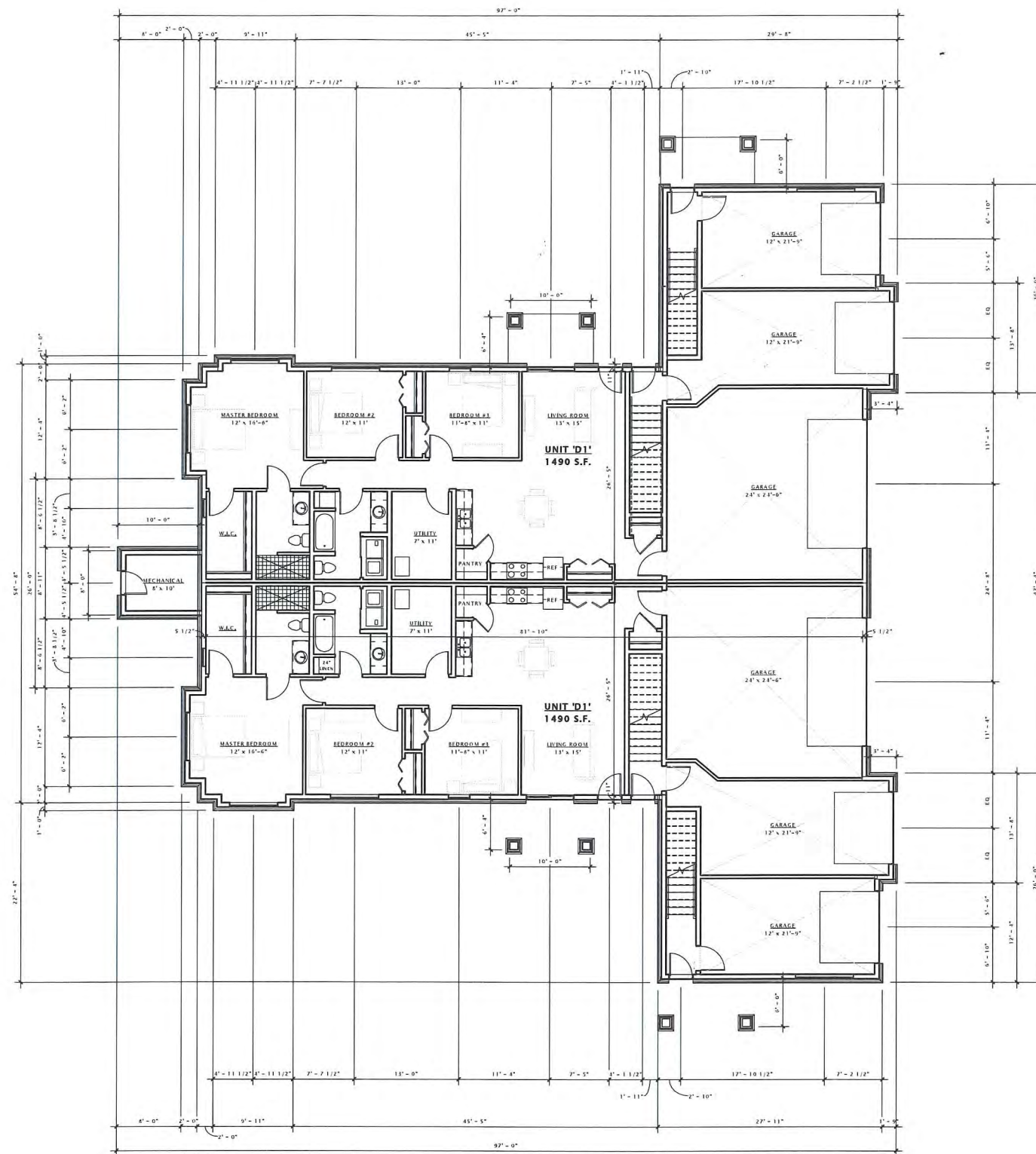
Revision Schedule		
Mark	Description	Date

SHEET TITLE

FIRST FLOOR PLAN -
BUILDING TYPE 'B'

SHEET NUMBER

A101-B



DECKER PROPERTIES,
INC.

CATALINA CROSSING
APARTMENTS

PROGRESS DOCUMENTS

These documents reflect progress and intent and may be subject to change, including additional detail. These are not final construction documents and should not be used for final bidding or construction-related purposes.

DATE OF ISSUANCE 17 FEBRUARY 2016

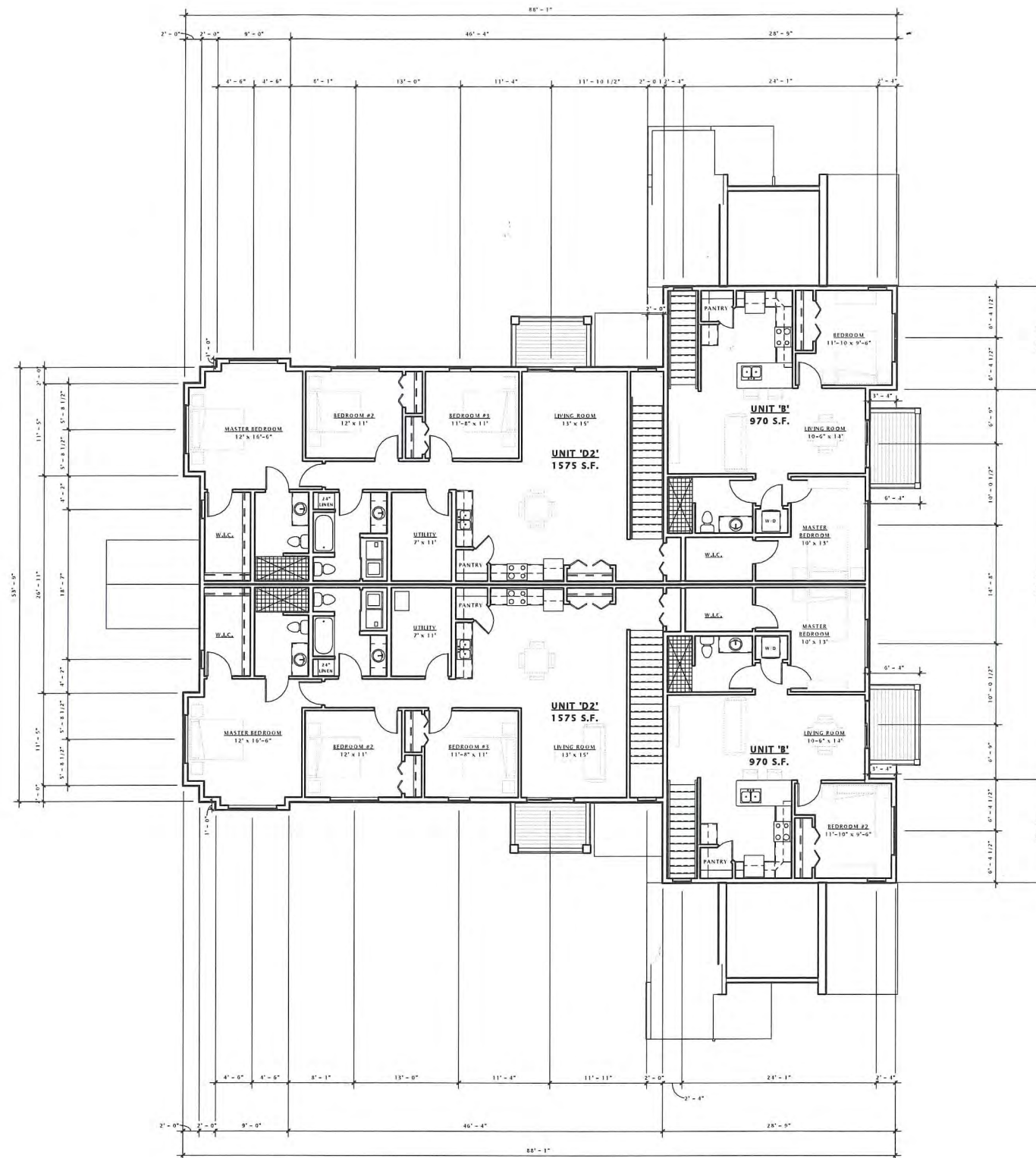
Revision Schedule		
Mark	Description	Date

SHEET TITLE

SECOND FLOOR PLAN
- BUILDING TYPE 'B'

SHEET NUMBER

A102-B



DECKER PROPERTIES,
 INC.

CATALINA CROSSING
 APARTMENTS

PROGRESS DOCUMENTS

These documents reflect progress and intent and may be subject to change, including additional detail. These are not final construction documents and should not be used for final bidding or construction-related purposes.

DATE OF ISSUANCE 17 FEBRUARY 2016

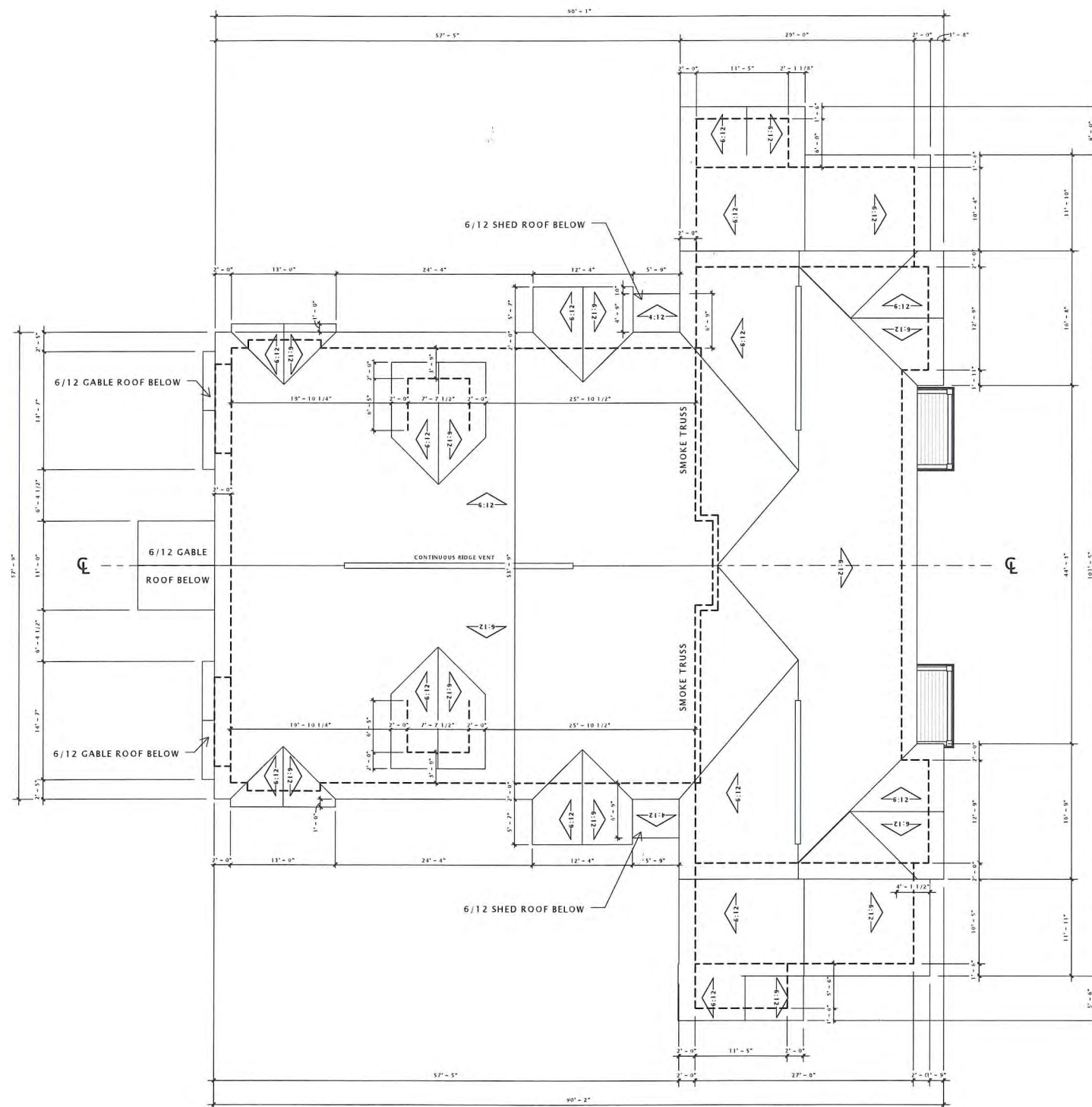
Revision Schedule		
Mark	Description	Date

SHEET TITLE

ROOF PLAN -
 BUILDING TYPE 'B'

SHEET NUMBER

A109-B



1 ROOF PLAN - BUILDING 'B'
 1/8" = 1'-0"



- 6" HORIZONTAL COMPOSITE SIDING (MOUNTAIN CEDAR)
- 6' X 8' VINYL SLIDING PATIO DOOR
- 3' X 6' SINGLE VINYL WINDOW
- DECORATIVE BRACKET
- 2'-6" X 2'-6" VINYL WINDOW
- 6" HORIZONTAL COMPOSITE SIDING (MOUNTAIN CEDAR)
- 9" VINYL SHAKES (SABLE BROWN)
- 6" COMPOSITE TRIM
- 2' X 2'-6" TRIPLE VINYL WINDOW
- 9" HORIZONTAL COMPOSITE SIDING (HEARTHSTONE)
- STONE VENEER
- 3' X 6'-8" ENTRY DOOR (WOOD)

6 BUILDING 'B' - SIDE ELEVATION 1
3/16" = 1'-0"



16 BUILDING 'B' - SIDE ELEVATION 2
3/16" = 1'-0"

DECKER PROPERTIES,
INC.

CATALINA CROSSING
APARTMENTS

PROGRESS DOCUMENTS

These documents reflect progress and intent and may be subject to change, including additional detail. These are not final construction documents and should not be used for final bidding or construction-related purposes.

DATE OF ISSUANCE 17 FEBRUARY 2016

Revision Schedule		
Mark	Description	Date

SHEET TITLE

EXTERIOR ELEVATIONS

SHEET NUMBER

A200-B

DECKER PROPERTIES,
INC.

CATALINA CROSSING
APARTMENTS

PROGRESS DOCUMENTS

These documents reflect progress and intent and may be subject to change, including additional detail. These are not final construction documents and should not be used for final bidding or construction-related purposes.

DATE OF ISSUANCE 17 FEBRUARY 2016

Revision Schedule		
Mark	Description	Date

SHEET TITLE

EXTERIOR ELEVATIONS

SHEET NUMBER

A201-B



- DECORATIVE BRACKET
- 3' X 6' DOUBLE VINYL WINDOW
- 6' COMPOSITE TRIM
- 9" VINYL SHAKES (SABLE BROWN)
- 6" HORIZONTAL VINYL SIDING (MOUNTAIN CEDAR)
- 6' COMPOSITE TRIM
- 9" HORIZONTAL VINYL SIDING (HEARTHSTONE)
- 3' X 6' DOUBLE VINYL WINDOW
- STONE VENEER
- 3' X 6'-8" ENTRY DOOR (WOOD)

6 BUILDING 'B' - FRONT ELEVATION
3/16" = 1'-0"



10 BUILDING 'B' - REAR ELEVATION
3/16" = 1'-0"

DECKER PROPERTIES,
INC.

CATALINA CROSSING
APARTMENTS

PROGRESS DOCUMENTS

These documents reflect progress and intent and may be subject to change, including additional detail. These are not final construction documents and should not be used for final bidding or construction-related purposes.

DATE OF ISSUANCE 17 FEBRUARY 2016

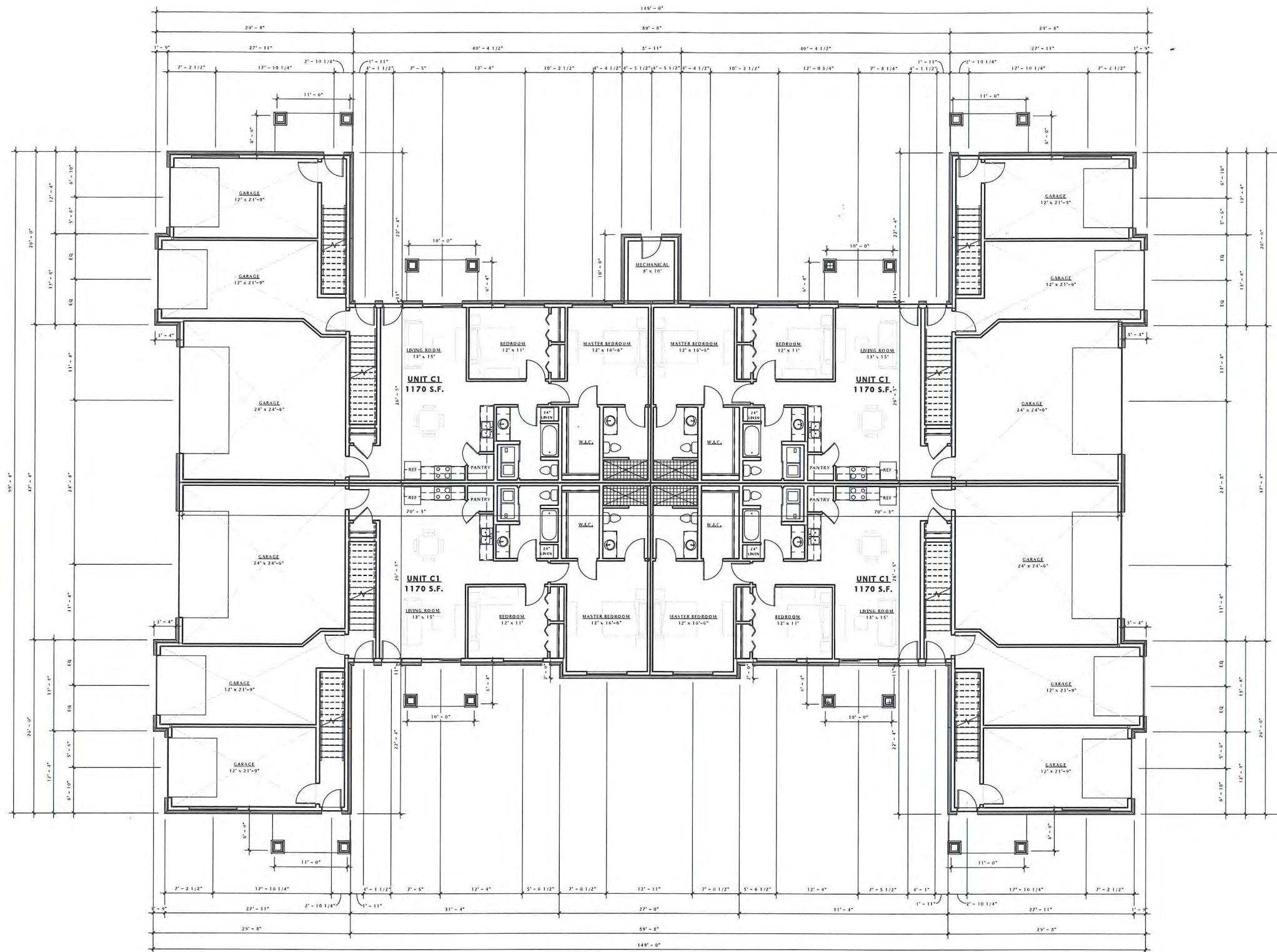
Revision Schedule		
Mark	Description	Date

SHEET TITLE

FIRST FLOOR PLAN -
BUILDING TYPE 'C'

SHEET NUMBER

A101-C



DECKER PROPERTIES,
 INC.

CATALINA CROSSING
 APARTMENTS

PROGRESS DOCUMENTS

These documents reflect progress and intent and may be subject to change, including additional detail. These are not final construction documents and should not be used for final bidding or construction-related purposes.

DATE OF ISSUANCE 17 FEBRUARY 2016

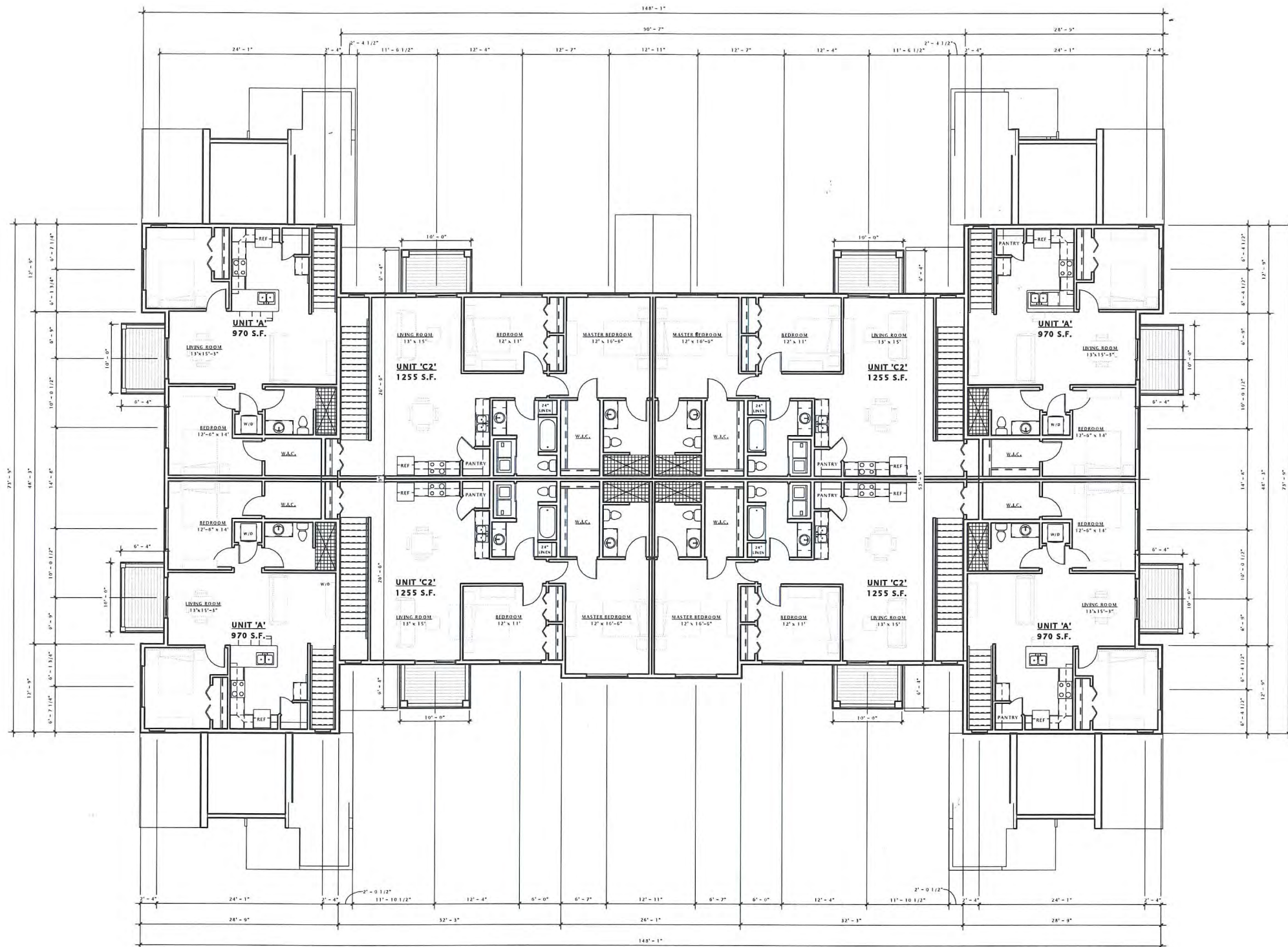
Revision Schedule		
Mark	Description	Date

SHEET TITLE

SECOND FLOOR PLAN
 - BUILDING TYPE 'C'

SHEET NUMBER

A102-C



DECKER PROPERTIES,
INC.

CATALINA CROSSING
APARTMENTS

PROGRESS DOCUMENTS

These documents reflect progress and intent and may be subject to change, including additional detail. These are not final construction documents and should not be used for final bidding or construction-related purposes.

DATE OF ISSUANCE 17 FEBRUARY 2016

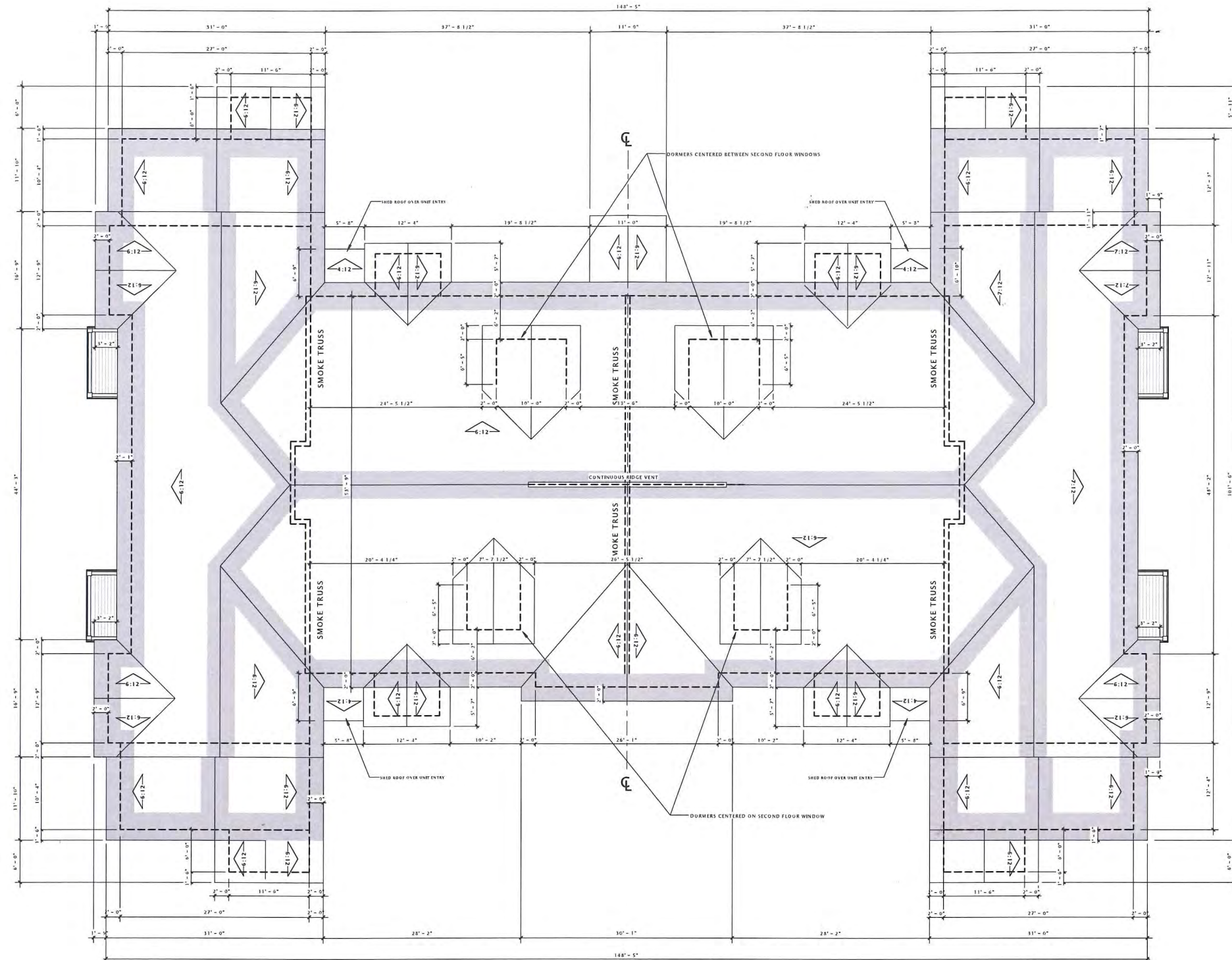
Revision Schedule		
Mark	Description	Date

SHEET TITLE

ROOF PLAN -
BUILDING TYPE 'C'

SHEET NUMBER

A109-C



DECKER PROPERTIES,
INC.

CATALINA CROSSING
APARTMENTS

PROGRESS DOCUMENTS

These documents reflect progress and intent and may be subject to change, including additional detail. These are not final construction documents and should not be used for final bidding or construction-related purposes.

DATE OF ISSUANCE 17 FEBRUARY 2016

Revision Schedule		
Mark	Description	Date

SHEET TITLE

EXTERIOR ELEVATIONS

SHEET NUMBER

A200-C



- 3' X 6" DOUBLE VINYL WINDOW
- 6' X 8" VINYL PATIO DOOR
- 2'-6" X 4' VINYL SINGLE WINDOW
- 2'-6" X 2'-6" SINGLE VINYL WINDOW
- 6" HORIZONTAL COMPOSITE SIDING (SUEDE)
- 9" VINYL SHAKES (SABLE BROWN)
- 6" COMPOSITE TRIM (WHITE)
- 2' X 2'-6" TRIPLE VINYL WINDOW
- 9" HORIZONTAL COMPOSITE SIDING (HEARTHSTONE)
- STONE VENEER
- 3' X 6"-8" ENTRY DOOR (WOOD)

6 BUILDING 'C' - FRONT ELEVATION
1/8" = 1'-0"



16 BUILDING 'C' - REAR ELEVATION
1/8" = 1'-0"



- 3' X 6' DOUBLE VINYL WINDOW
- 6' X 8' VINYL PATIO DOOR
- 6" COMPOSITE TRIM
- DECORATIVE BRACKET
- 9" VINYL SHAKES (SABLE BROWN)
- 3' X 6' DOUBLE VINYL WINDOW
- 6" COMPOSITE TRIM
- 6" HORIZONTAL COMPOSITE SIDING (SUEDE)
- 9" HORIZONTAL COMPOSITE SIDING (HEARTHSTONE)
- 6" COMPOSITE TRIM
- STONE VENEER
- 7' X 16' OVERHEAD DOOR (HEARTHSTONE)

⑥ BUILDING 'C' - SIDE ELEVATION 1
3/16" = 1'-0"



⑬ BUILDING 'C' - SIDE ELEVATION 2
3/16" = 1'-0"

JLA
ARCHITECTURE & INTERIORS

JOSEPH LEE - ASSOCIATES
2418 C.D. SPOFFORDS DRIVE - SUITE 2300
MADISON, WISCONSIN 53718
608.241.5500

JLA PROJECT NUMBER: 14-1103

DECKER PROPERTIES,
INC.

CATALINA CROSSING
APARTMENTS

PROGRESS DOCUMENTS

These documents reflect progress and intent and may be subject to change, including additional detail. These are not final construction documents and should not be used for final bidding or construction-related purposes.

DATE OF ISSUANCE 17 FEBRUARY 2016

Revision Schedule		
Mark	Description	Date

SHEET TITLE

EXTERIOR ELEVATIONS

SHEET NUMBER

A201-C

DECKER PROPERTIES,
INC.

CATALINA CROSSING
APARTMENTS

PROGRESS DOCUMENTS

These documents reflect progress and intent and may be subject to change, including additional detail. These are not final construction documents and should not be used for final bidding or construction-related purposes.

DATE OF ISSUANCE 17 FEBRUARY 2016

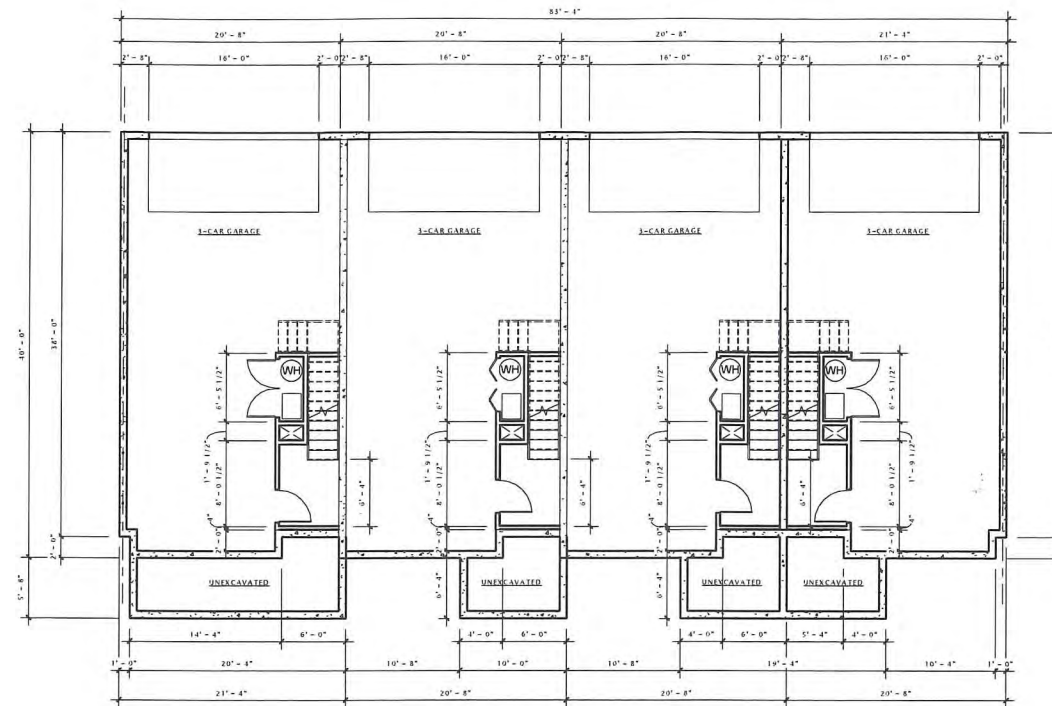
Revision Schedule		
Mark	Description	Date

SHEET TITLE

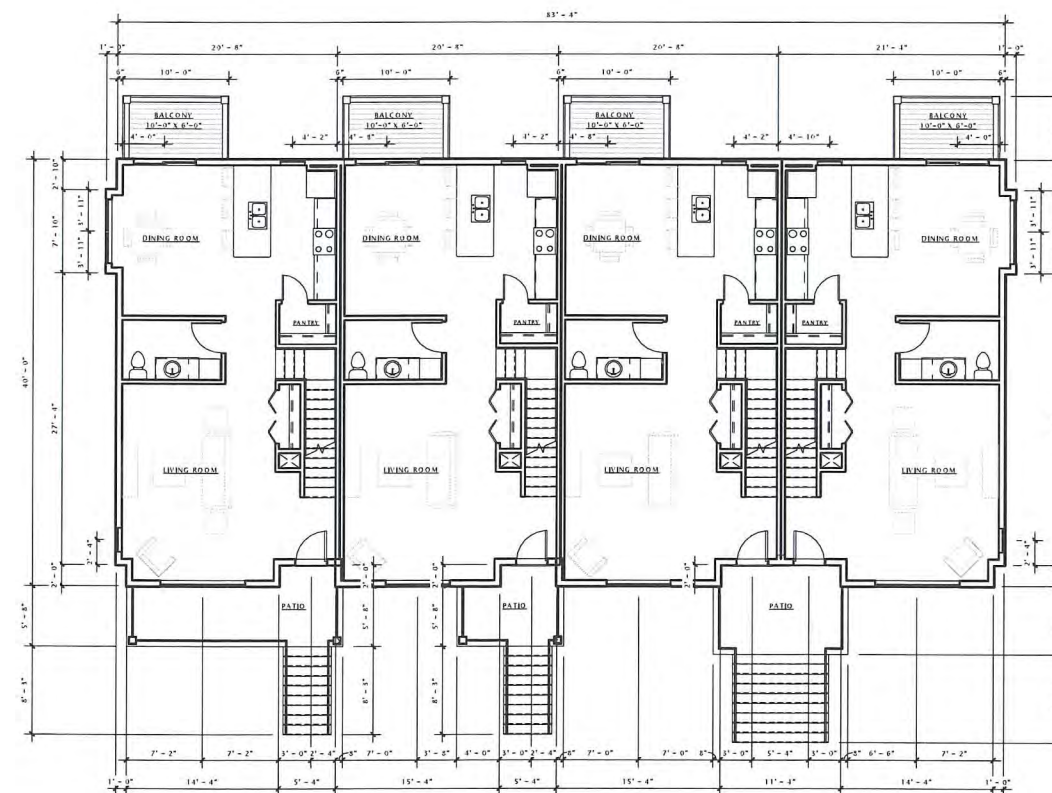
LOWER LEVEL & FIRST
FLOOR PLAN -
BUILDING TYPE 'D'

SHEET NUMBER

A101-D



① 00 - LOWER LEVEL PLAN - BUILDING 'D'
1/8" = 1'-0"



① 17 FIRST FLOOR PLAN - BUILDING 'D'
1/8" = 1'-0"

DECKER PROPERTIES,
 INC.

CATALINA CROSSING
 APARTMENTS

PROGRESS DOCUMENTS

These documents reflect progress and intent and may be subject to change, including additional detail. These are not final construction documents and should not be used for final bidding or construction-related purposes.

DATE OF ISSUANCE 17 FEBRUARY 2016

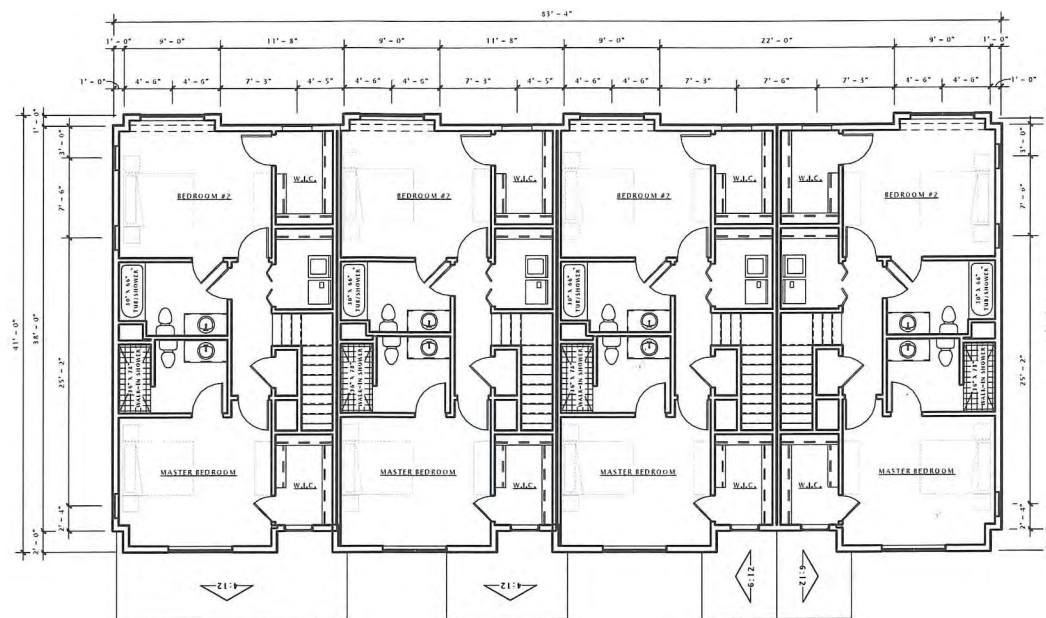
Revision Schedule		
Mark	Description	Date

SHEET TITLE

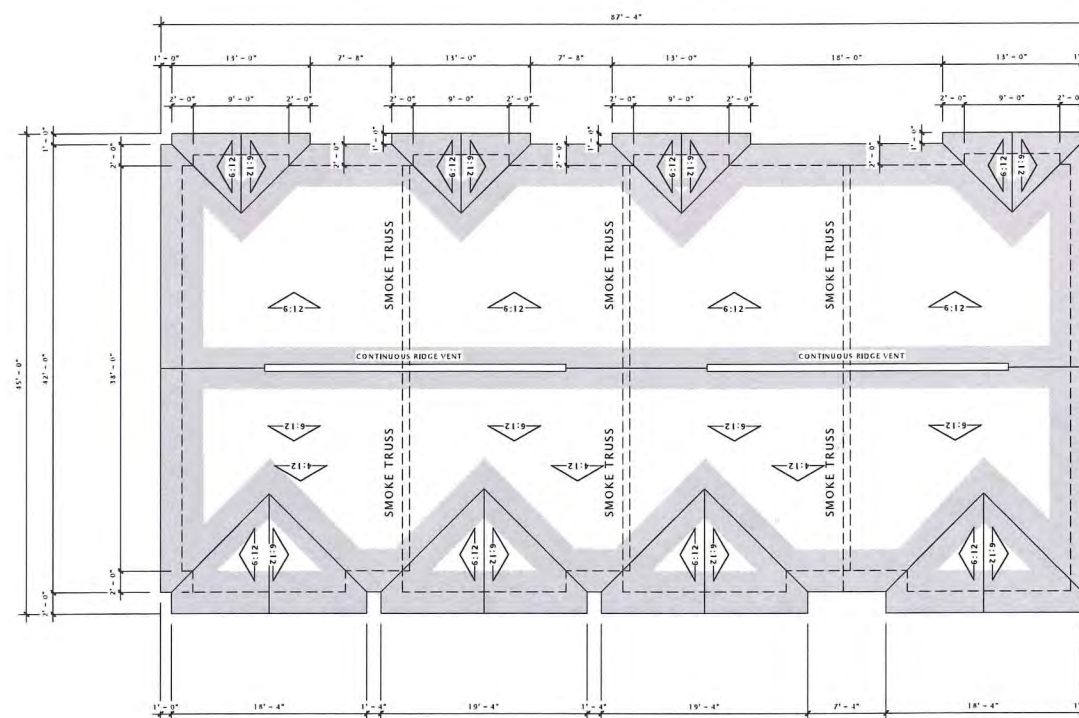
SECOND FLOOR &
 ROOF PLAN -
 BUILDING TYPE 'D'

SHEET NUMBER

A102-D



8 SECOND FLOOR PLAN - BUILDING 'D'
 1/8" = 1'-0"



18 03 - ROOF PLAN - BUILDING 'D'
 1/8" = 1'-0"

DECKER PROPERTIES,
INC.

CATALINA CROSSING
APARTMENTS

PROGRESS DOCUMENTS

These documents reflect progress and intent and may be subject to change, including additional detail. These are not final construction documents and should not be used for final bidding or construction-related purposes.

DATE OF ISSUANCE 17 FEBRUARY 2016

Revision Schedule		
Mark	Description	Date

SHEET TITLE

EXTERIOR ELEVATIONS

SHEET NUMBER

A200-D



- 6" HORIZONTAL COMPOSITE SIDING (HEARTHSTONE)
- 6" HORIZONTAL SIDING (MOUNTAIN CEDAR)
- DECORATIVE BRACKET
- 2' X 2'-6" TRIPLE VINYL WINDOW
- 9" VINYL SHAKES (SABLE BROWN)
- 3' X 6' DOUBLE VINYL WINDOW
- 6" COMPOSITE TRIM (WHITE)
- 3' X 6' TRIPLE VINYL WINDOW
- STONE VENEER
- 2'-6" X 2'-6" VINYL WINDOW
- 3' X 6'-8" ENTRY DOOR (WOOD)
- 3' X 6' DOUBLE VINYL WINDOW

⑥ BUILDING 'D' - FRONT ELEVATION
3/16" = 1'-0"



⑩ BUILDING 'D' - REAR ELEVATION
3/16" = 1'-0"



- DECORATIVE BRACKET
- 2' X 2'-6" VINYL WINDOW
- 9" VINYL SHAKES (SABLE BROWN)
- 2' X 2'-6" VINYL WINDOW
- 6" HORIZONTAL COMPOSITE SIDING (MOUNTAIN CEDAR)
- 2'-6" X 4' VINYL WINDOW
- 6" COMPOSITE TRIM (WHITE)
- 3' X 6' DOUBLE VINYL WINDOW
- STONE VENEER

⑥ BUILDING 'D' - SIDE ELEVATION 1
3/16" = 1'-0"



⑩ BUILDING 'D' - SIDE ELEVATION 2
3/16" = 1'-0"

DECKER PROPERTIES,
INC.

CATALINA CROSSING
APARTMENTS

PROGRESS DOCUMENTS

These documents reflect progress and intent and may be subject to change, including additional detail. These are not final construction documents and should not be used for final bidding or construction-related purposes.

DATE OF ISSUANCE 17 FEBRUARY 2016

Revision Schedule		
Mark	Description	Date

SHEET TITLE

EXTERIOR ELEVATIONS

SHEET NUMBER

A201-D

DECKER PROPERTIES,
INC.

CATALINA CROSSING
APARTMENTS

PROGRESS DOCUMENTS

These documents reflect progress and intent and may be subject to change, including additional detail. These are not final construction documents and should not be used for final bidding or construction-related purposes.

DATE OF ISSUANCE 17 FEBRUARY 2016

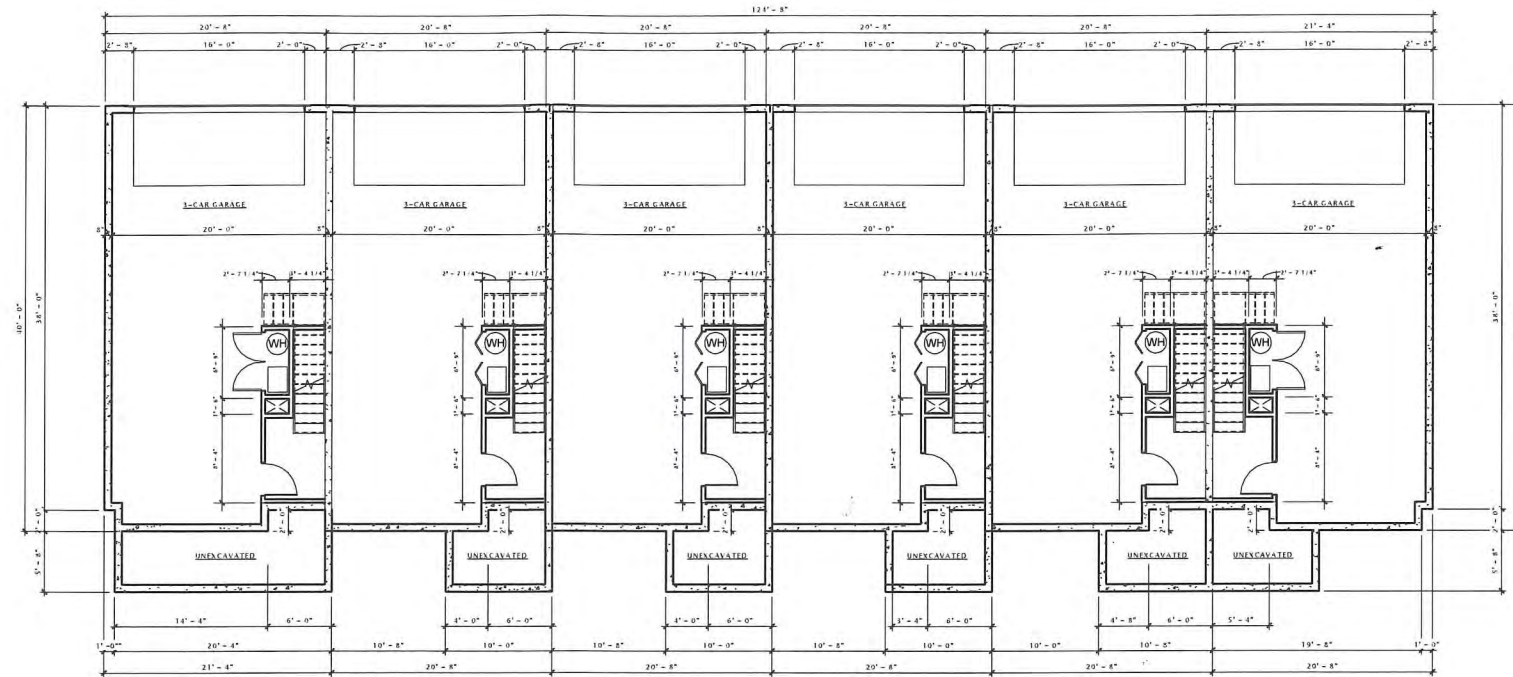
Revision Schedule		
Mark	Description	Date

SHEET TITLE

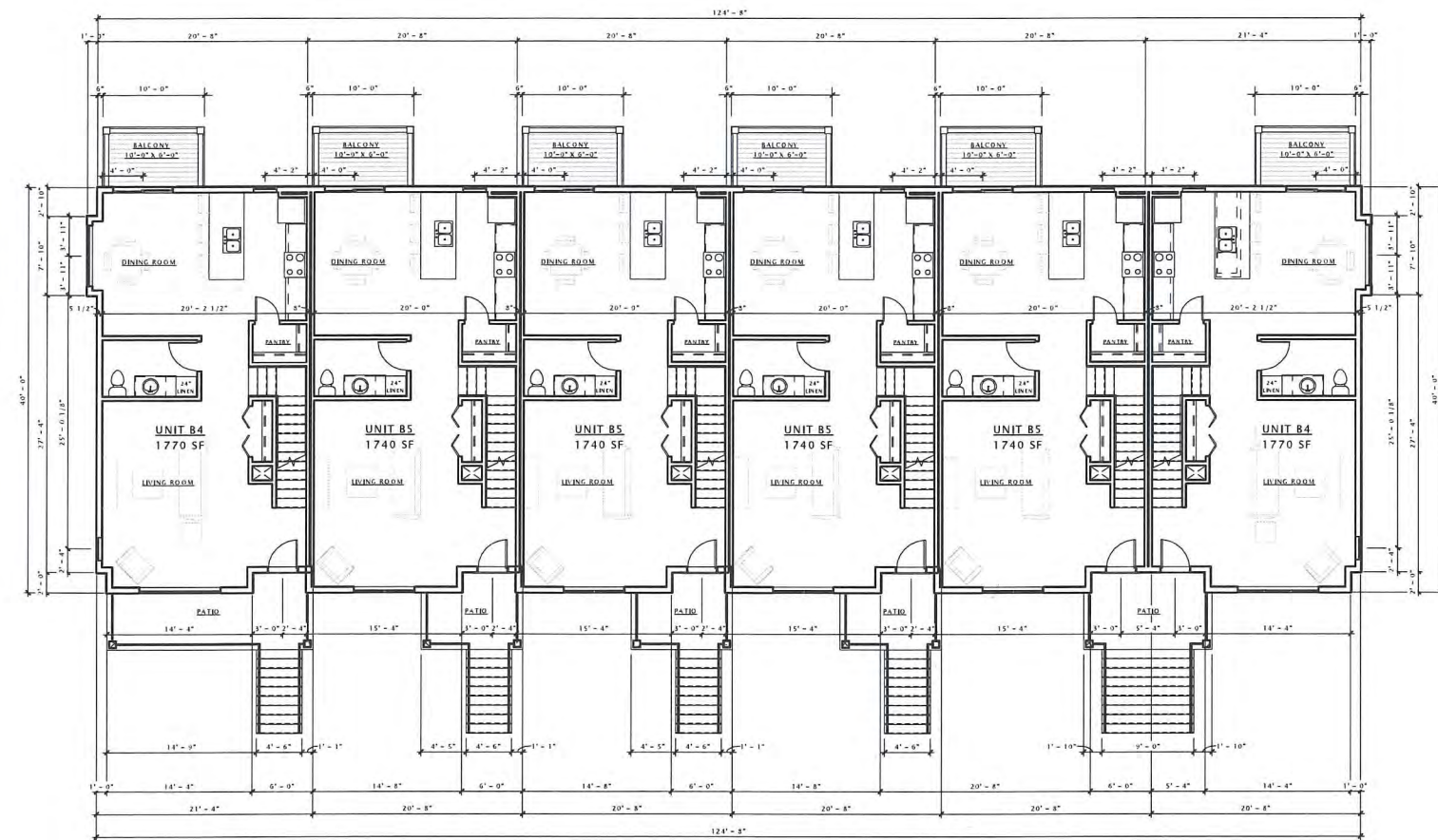
LOWER LEVEL & FIRST
FLOOR PLAN -
BUILDING TYPE 'E'

SHEET NUMBER

A101-E



7 00 - LOWER LEVEL PLAN - BUILDING 'E'
1/8" = 1'-0"



17 FIRST FLOOR PLAN - BUILDING 'D'
1/8" = 1'-0"

DECKER PROPERTIES,
INC.

CATALINA CROSSING
APARTMENTS

PROGRESS DOCUMENTS

These documents reflect progress and intent and may be subject to change, including additional detail. These are not final construction documents and should not be used for final bidding or construction-related purposes.

DATE OF ISSUANCE 17 FEBRUARY 2016

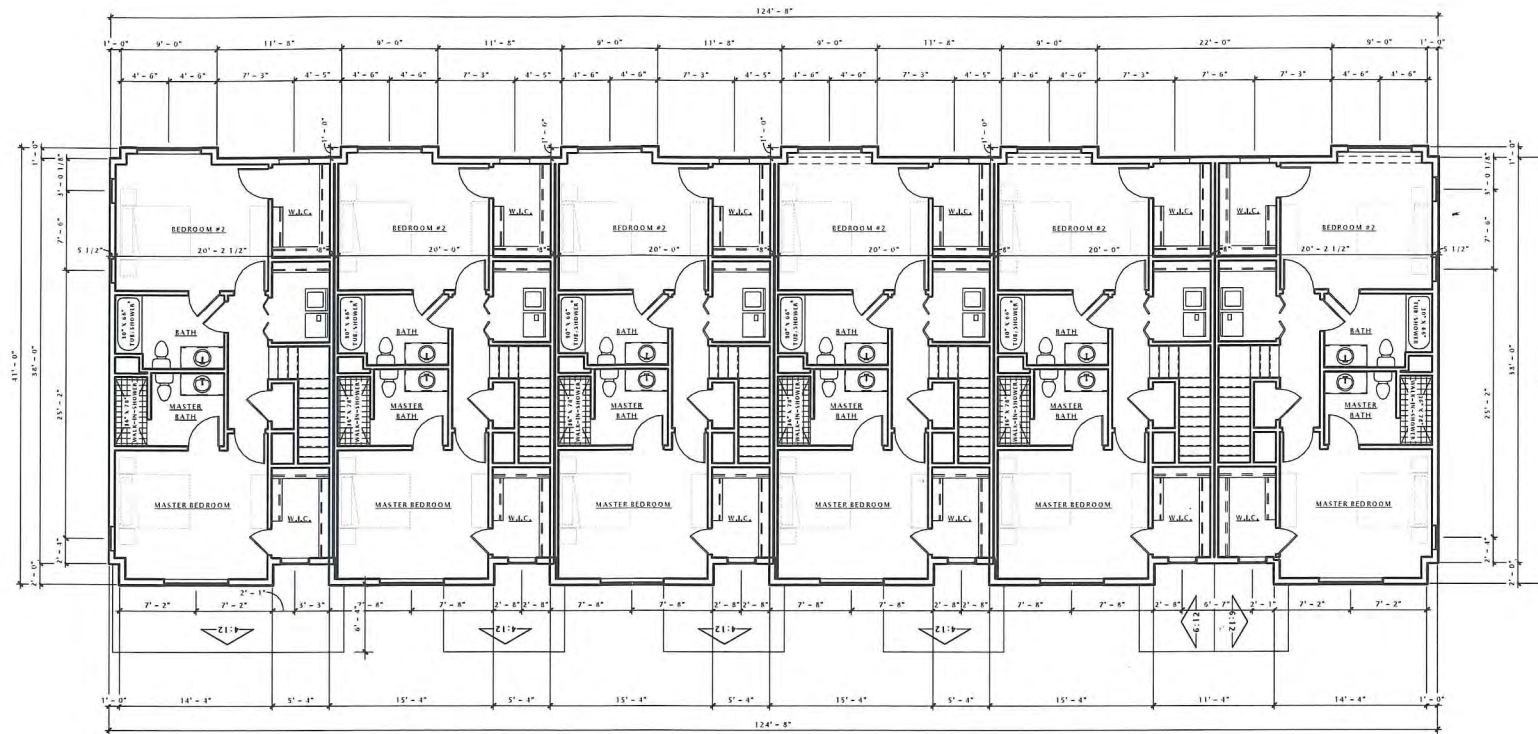
Revision Schedule		
Mark	Description	Date

SHEET TITLE

SECOND FLOOR &
ROOF PLAN -
BUILDING TYPE 'E'

SHEET NUMBER

A102-E



7 SECOND FLOOR PLAN - BUILDING 'E'
1/8" = 1'-0"



17 03 - ROOF PLAN - BUILDING 'E'
1/8" = 1'-0"

DECKER PROPERTIES,
INC.

CATALINA CROSSING
APARTMENTS

PROGRESS DOCUMENTS

These documents reflect progress and intent and may be subject to change, including additional detail. These are not final construction documents and should not be used for final bidding or construction-related purposes.

DATE OF ISSUANCE 17 FEBRUARY 2016

Revision Schedule		
Mark	Description	Date

SHEET TITLE

EXTERIOR ELEVATIONS

SHEET NUMBER

A200-E



⑥ BUILDING 'E' - FRONT ELEVATION
1/8" = 1'-0"



⑩ BUILDING 'E' - REAR ELEVATION
1/8" = 1'-0"

DECKER PROPERTIES,
 INC.

CATALINA CROSSING
 APARTMENTS

PROGRESS DOCUMENTS

These documents reflect progress and intent and may be subject to change, including additional detail. These are not final construction documents and should not be used for final bidding or construction-related purposes.

DATE OF ISSUANCE 17 FEBRUARY 2016

Revision Schedule		
Mark	Description	Date

SHEET TITLE

EXTERIOR ELEVATIONS

SHEET NUMBER

A201-E



- DECORATIVE BRACKET
- 2' X 2'-6" VINYL WINDOW
- 9" VINYL SHAKES (SABLE BROWN)
- 2' X 2'-6" VINYL WINDOW
- 6" HORIZONTAL COMPOSITE SIDING (MOUNTAIN CEDAR)
- 2'-6" X 4' VINYL WINDOW
- 6" COMPOSITE TRIM (WHITE)
- 3' X 6' DOUBLE VINYL WINDOW
- STONE VENEER

⑥ BUILDING 'E' - SIDE ELEVATION 1
 3/16" = 1'-0"



⑩ BUILDING 'E' - SIDE ELEVATION 2
 3/16" = 1'-0"

DECKER PROPERTIES,
INC.

CATALINA CROSSING
APARTMENTS

PROGRESS DOCUMENTS

These documents reflect progress and intent and may be subject to change, including additional detail. These are not final construction documents and should not be used for final bidding or construction-related purposes.

DATE OF ISSUANCE 17 FEBRUARY 2016

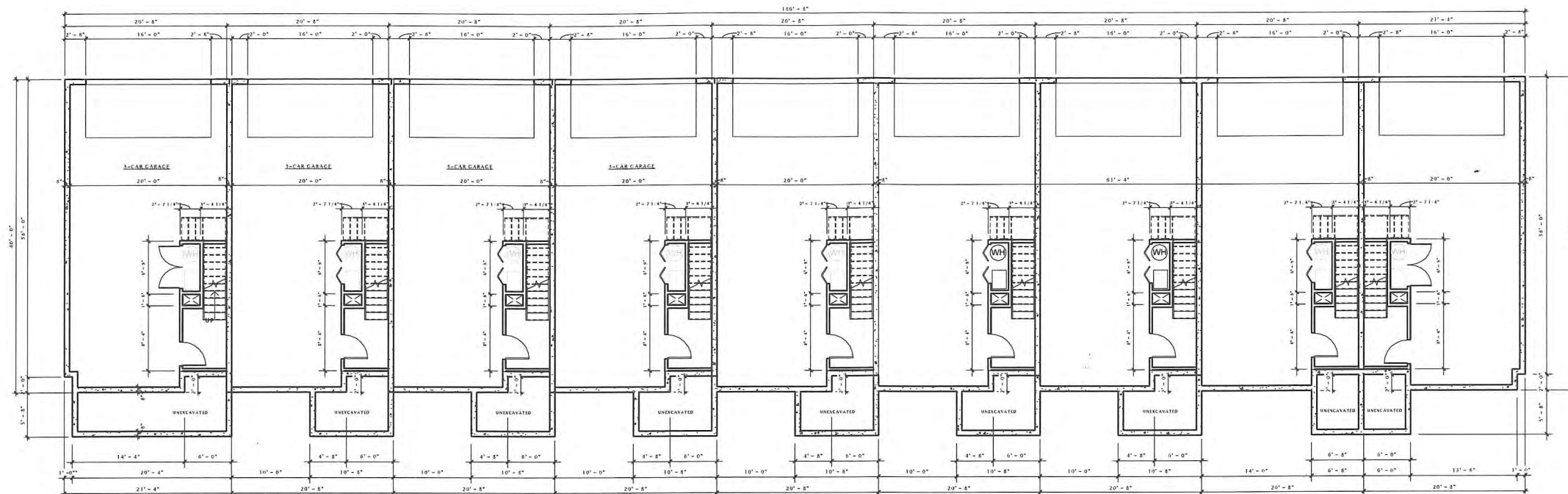
Revision Schedule		
Mark	Description	Date

SHEET TITLE

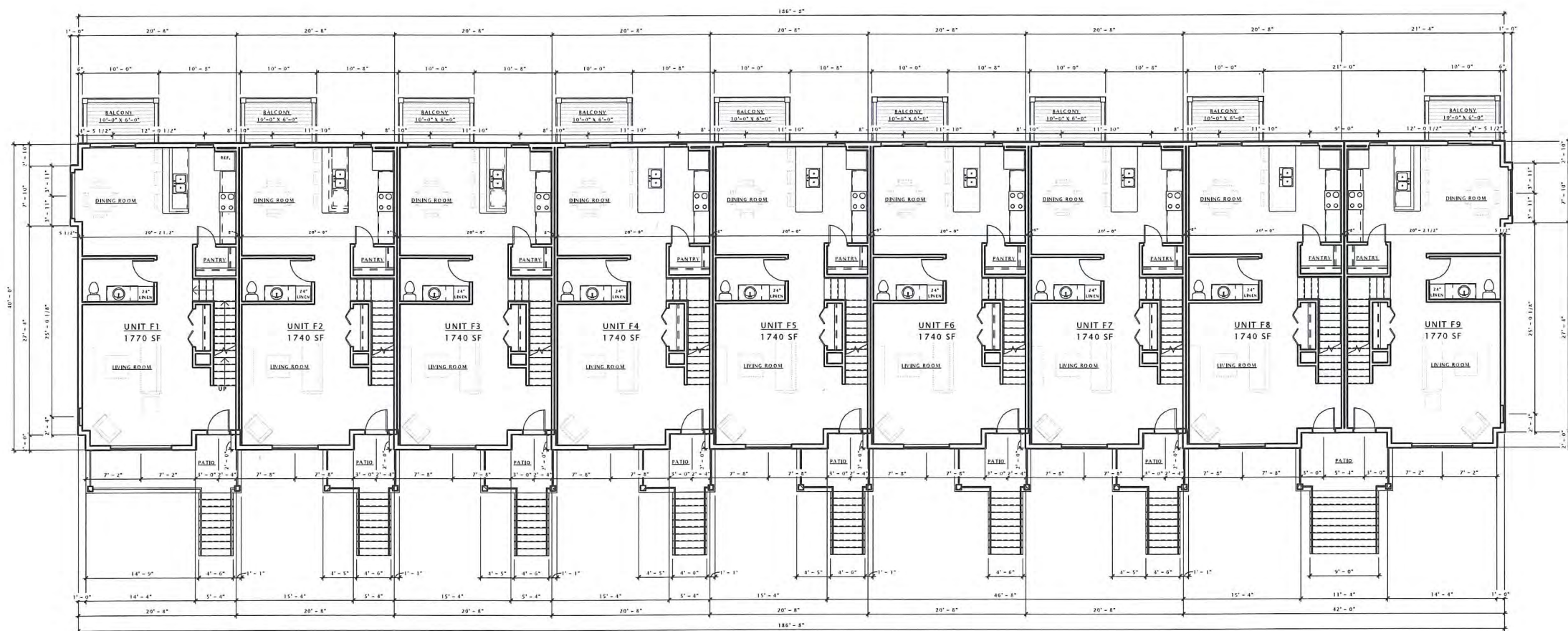
LOWER LEVEL & FIRST
FLOOR PLAN -
BUILDING TYPE 'F'

SHEET NUMBER

A101-F



7 LOWER LEVEL PLAN - BUILDING 'F'
1/8" = 1'-0"



17 FIRST FLOOR PLAN - BUILDING 'F'
1/8" = 1'-0"

DECKER PROPERTIES,
 INC.

CATALINA CROSSING
 APARTMENTS

PROGRESS DOCUMENTS

These documents reflect progress and intent and may be subject to change, including additional detail. These are not final construction documents and should not be used for final bidding or construction-related purposes.

DATE OF ISSUANCE 17 FEBRUARY 2016

Revision Schedule		
Mark	Description	Date

SHEET TITLE

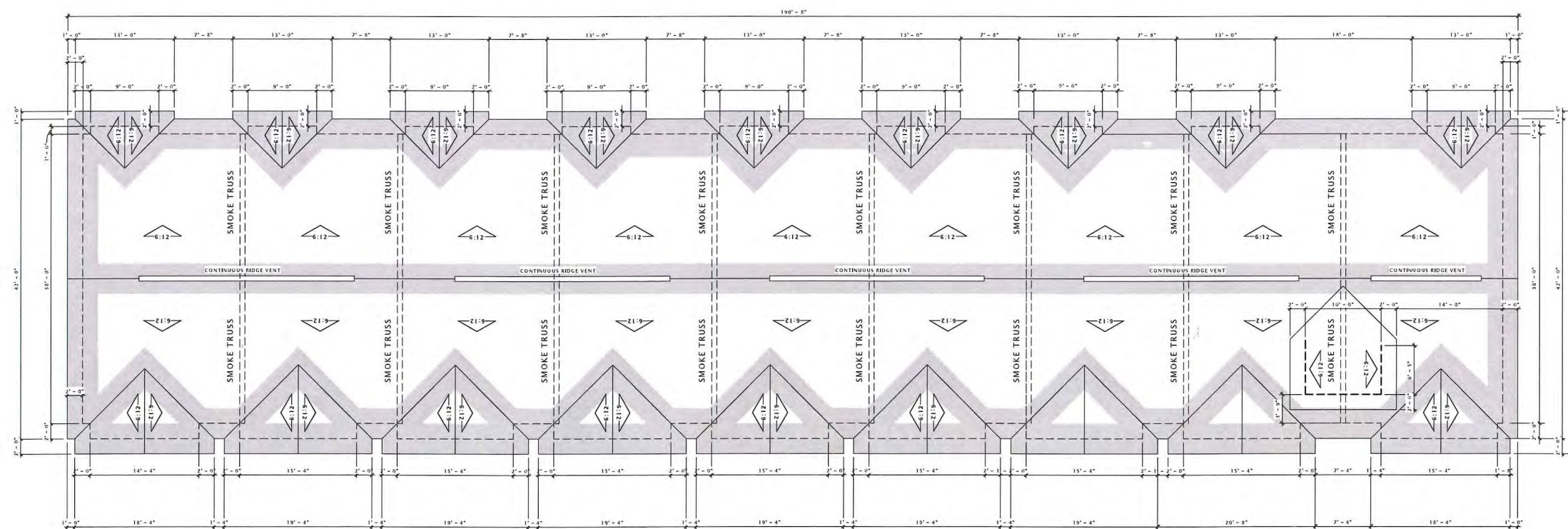
SECOND FLOOR &
 ROOF PLAN -
 BUILDING TYPE 'F'

SHEET NUMBER

A102-F



7 SECOND FLOOR PLAN - BUILDING 'C'
 1/8" = 1'-0"



17 03 - ROOF PLAN - BUILDING 'F'
 1/8" = 1'-0"

DECKER PROPERTIES,
INC.

CATALINA CROSSING
APARTMENTS

PROGRESS DOCUMENTS

These documents reflect progress and intent and may be subject to change, including additional detail. These are not final construction documents and should not be used for final bidding or construction-related purposes.

DATE OF ISSUANCE 17 FEBRUARY 2016

Revision Schedule		
Mark	Description	Date

SHEET TITLE

EXTERIOR ELEVATIONS

SHEET NUMBER

A200-F



16 BUILDING 'F' - FRONT ELEVATION
1/8" = 1'-0"



16 BUILDING 'F' - REAR ELEVATION
1/8" = 1'-0"

DECKER PROPERTIES,
INC.

CATALINA CROSSING
APARTMENTS

PROGRESS DOCUMENTS

These documents reflect progress and intent and may be subject to change, including additional detail. These are not final construction documents and should not be used for final bidding or construction-related purposes.

DATE OF ISSUANCE 17 FEBRUARY 2016

Revision Schedule		
Mark	Description	Date

SHEET TITLE

EXTERIOR ELEVATIONS

SHEET NUMBER

A201-F



- DECORATIVE BRACKET
- 2' X 2'-6" VINYL WINDOW
- 9" VINYL SHAKES (SABLE BROWN)
- 2' X 2'-6" VINYL WINDOW
- 6" HORIZONTAL COMPOSITE SIDING (MOUNTAIN CEDAR)
- 2'-6" X 4' VINYL WINDOW
- 6" COMPOSITE TRIM (WHITE)
- 3' X 6' DOUBLE VINYL WINDOW
- STONE VENEER

⑥ BUILDING 'F' - SIDE ELEVATION 1
3/16" = 1'-0"



⑩ BUILDING 'F' - SIDE ELEVATION 2
3/16" = 1'-0"