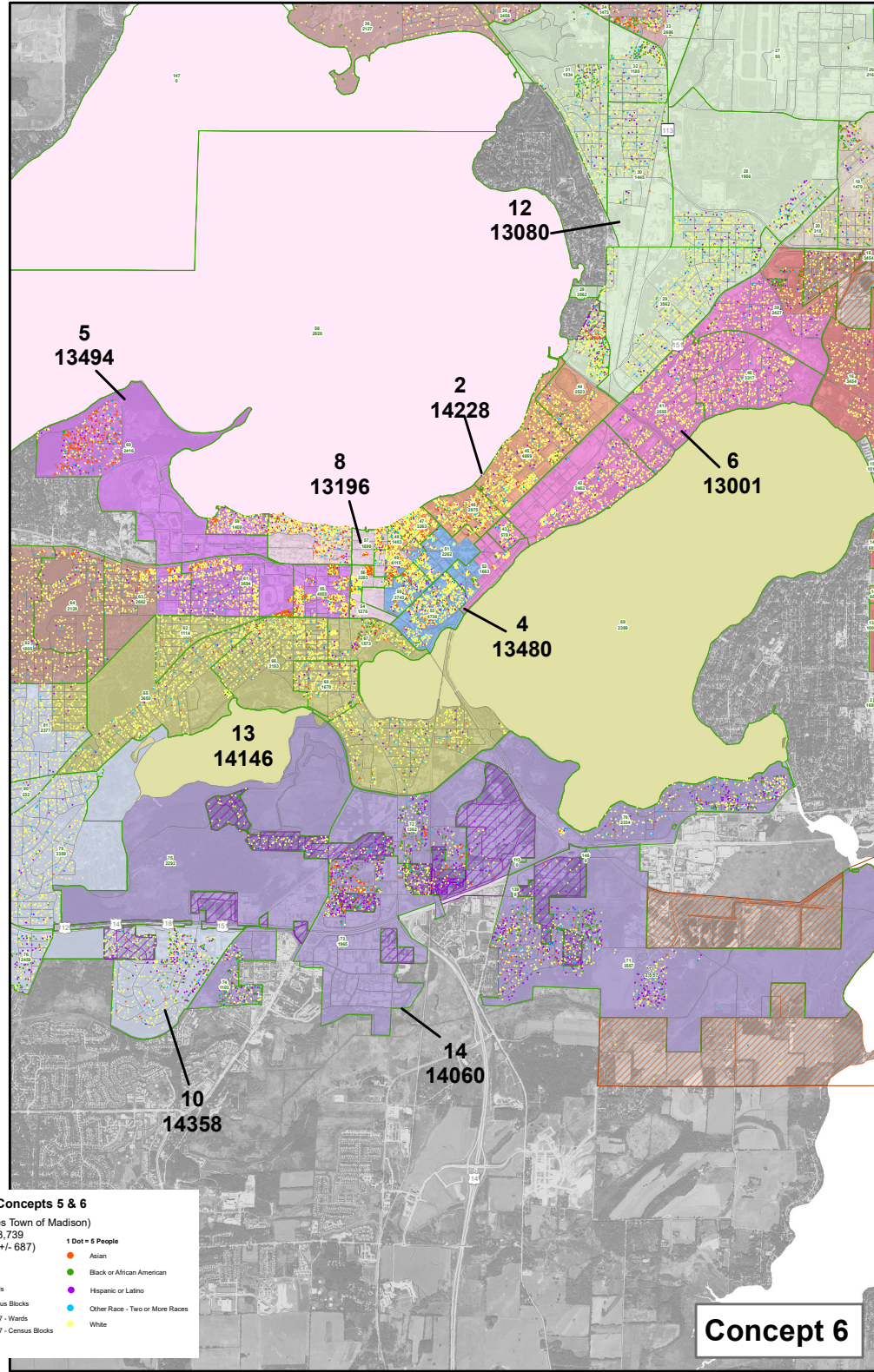
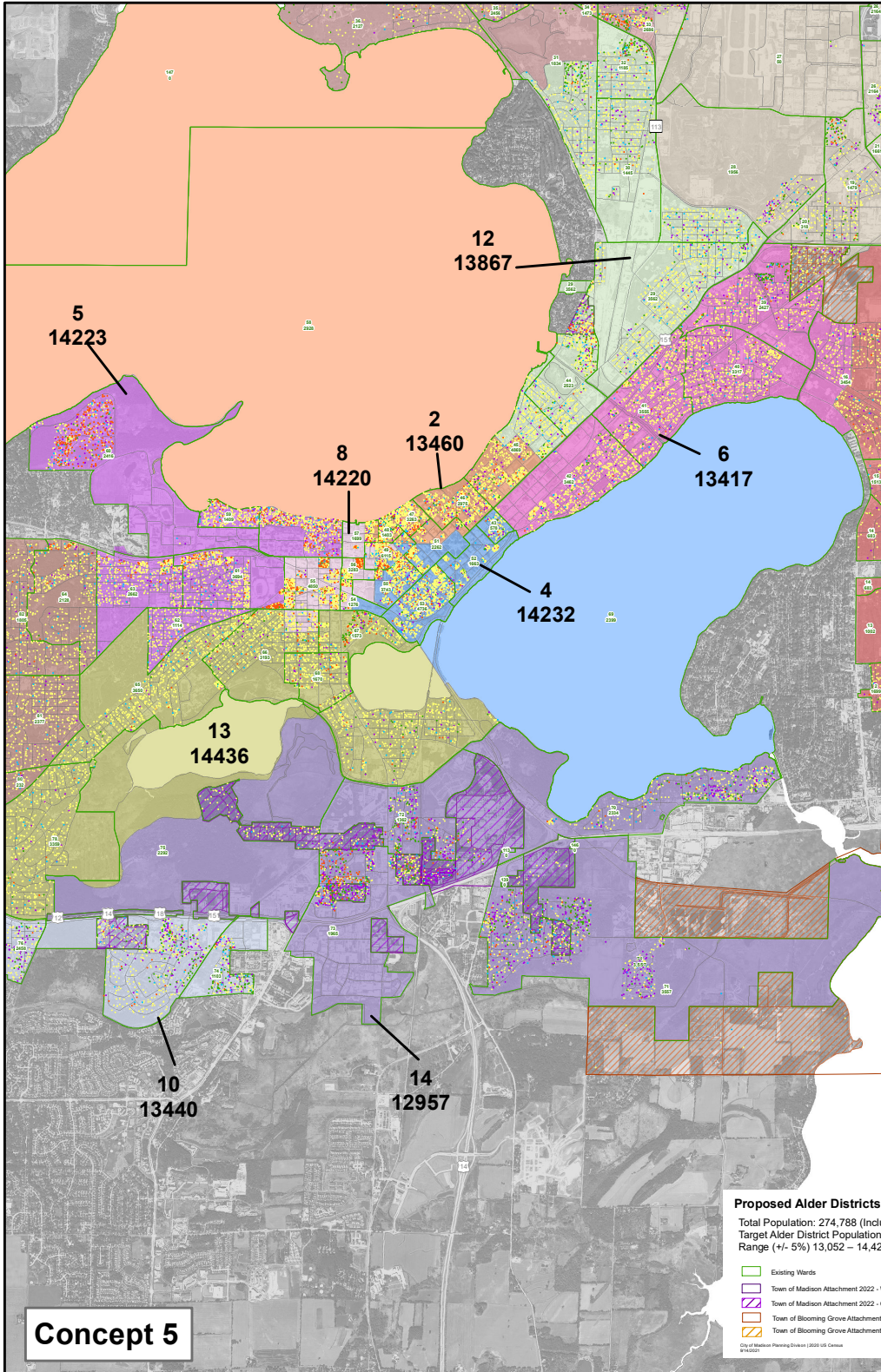


**Proposed Alder Districts - Concepts 5 & 6**  
 Total Population: 274,788 (Includes Town of Madison)  
 Target Alder District Population: 13,739  
 Range (+/- 5%) 13,052 – 14,426 (+/- 687)

Existing Wards  
 Town of Madison Attachment 2022 - Wards  
 Town of Madison Attachment 2022 - Census Blocks

1 Dot = 5 People  
 Asian  
 Black or African American  
 Hispanic or Latino  
 Other Race - Two or More Races  
 White

City of Madison Planning Division | 2020 US Census  
 8/16/2023



**Proposed Alder Districts - Concepts 5 & 6**  
 Total Population: 274,788 (Includes Town of Madison)  
 Target Alder District Population: 13,739  
 Range (+/- 5%) 13,052 – 14,426 (+/- 687)

Existing Wards  
 Town of Madison Attachment 2022 - Wards  
 Town of Madison Attachment 2022 - Census Blocks  
 Town of Blooming Grove Attachment 2027 - Wards  
 Town of Blooming Grove Attachment 2027 - Census Blocks

● 1 Dot = 6 People  
● Asian  
● Black or African American  
● Hispanic or Latino  
● Other Race - Two or More Races  
● White

City of Madison Planning Division | 2023 US Census  
 8/14/2021

