

**APPLICATION FOR
URBAN DESIGN COMMISSION
REVIEW AND APPROVAL**

AGENDA ITEM # _____
Project # _____

DATE SUBMITTED: <u>12.28.15</u>	Action Requested
UDC MEETING DATE: <u>01.13.16</u>	<input type="checkbox"/> Informational Presentation
	<input type="checkbox"/> Initial Approval and/or Recommendation
	<input checked="" type="checkbox"/> Final Approval and/or Recommendation

PROJECT ADDRESS: PHASE I- 800 North Block, East Washington Avenue (802, 854; Block 143)

ALDERMANIC DISTRICT: District 2/ Ledell Zellers

OWNER/DEVELOPER (Partners and/or Principals) <u>Gebhardt Development/ Otto Gebhardt III</u>	ARCHITECT/DESIGNER/OR AGENT: <u>bark design/Christopher Gosch, AIA, NCARB</u>
<u>222 North Street</u>	<u>222 North Street</u>
<u>Madison, WI 53704</u>	<u>Madison, WI 53704</u>

CONTACT PERSON: Christopher Gosch, AIA, NCARB
Address: 222 North Street
Madison, WI 53704
Phone: 608.333.1926
Fax: 608.245.0770
E-mail address: studio@bark-design.com

TYPE OF PROJECT:

(See Section A for:)

- Planned Unit Development (PUD)
 - General Development Plan (GDP)
 - Specific Implementation Plan (SIP)
- Planned Community Development (PCD)
 - General Development Plan (GDP)
 - Specific Implementation Plan (SIP)
- Planned Residential Development (PRD)
- New Construction or Exterior Remodeling in an Urban Design District * (A public hearing is required as well as a fee) **Design Progression**
- School, Public Building or Space (Fee may be required)
- New Construction or Addition to or Remodeling of a Retail, Hotel or Motel Building Exceeding 40,000 Sq. Ft.
- Planned Commercial Site

(See Section B for:)

- New Construction or Exterior Remodeling in C4 District (Fee required)

(See Section C for:)

- R.P.S.M. Parking Variance (Fee required)

(See Section D for:)

- Comprehensive Design Review* (Fee required)
- Street Graphics Variance* (Fee required)
- Other _____

*Public Hearing Required (Submission Deadline 3 Weeks in Advance of Meeting Date)

Where fees are required (as noted above) they apply with the first submittal for either initial or final approval of a project.

Galaxie Phase I

Date: **12.28.15**

Project Name: **Galaxie Phase I**

Owner: **Gebhardt Development**

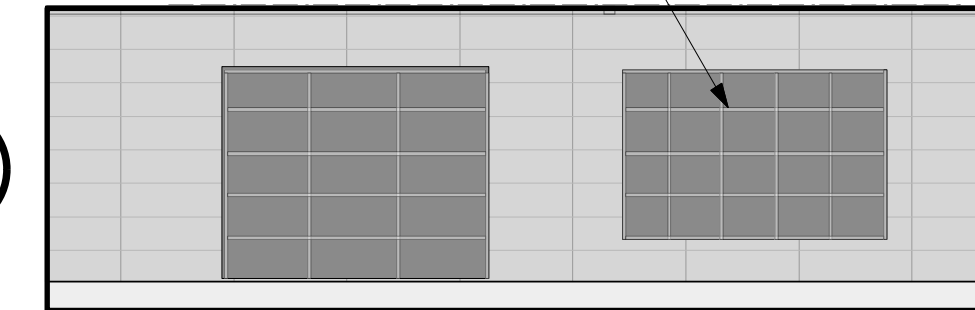
Location: **800N Block East Washington Ave.; Madison, WI**

Architect/Engineer: **Bark Design/Fink Associates**

Design Progression Items:

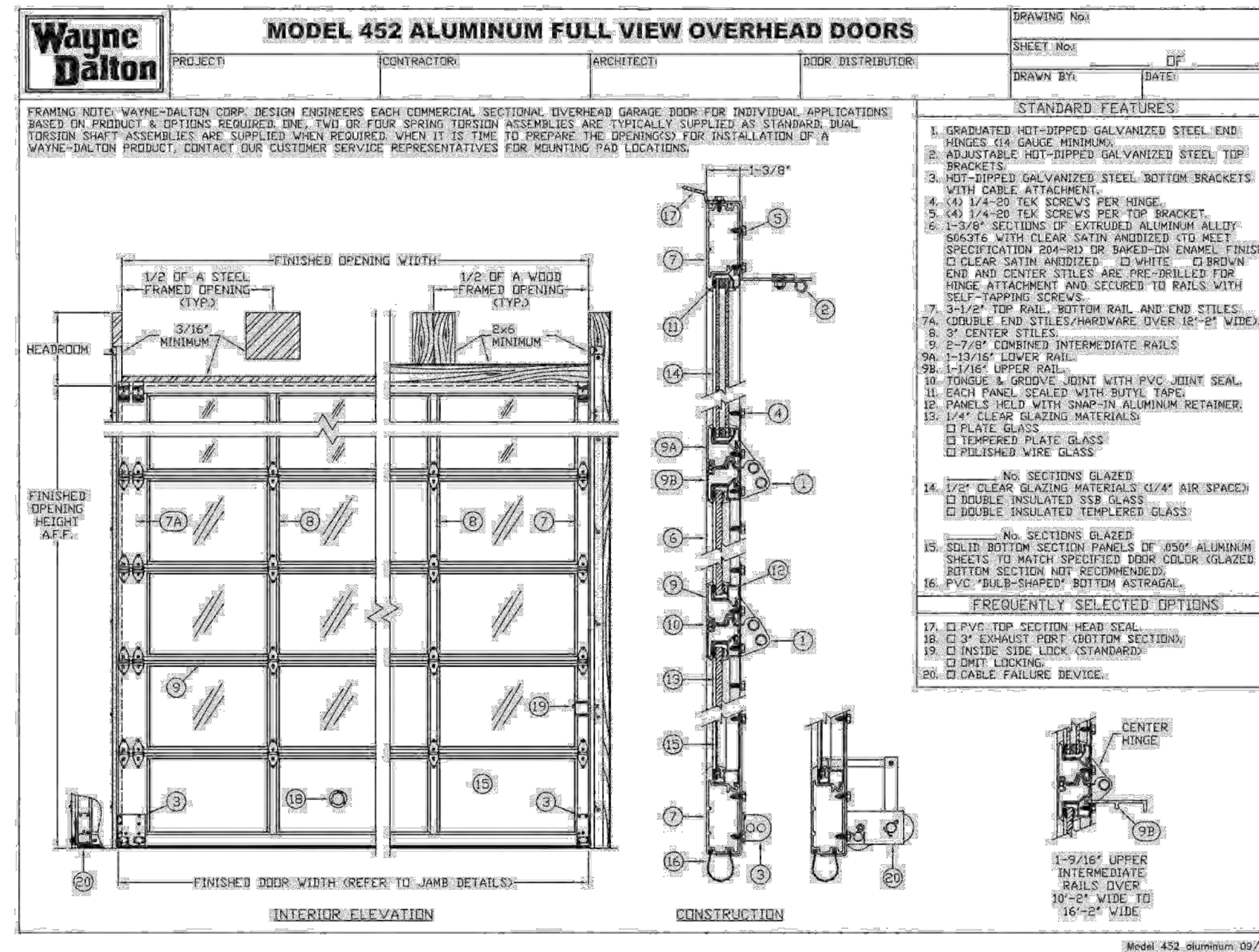
- 1: Modify color of grocery store coffee shop vertical element, adjust canopy location, and provide vertical reveals at brick pier to break up horizontal massing at East Washington elevation.
Reason: Condition of previous UDC approval
- 2: Substitute operable sectional aluminum and glass overhead door in lieu of previously approved fixed window at tenant space facing E. Mifflin.
Reason: Tenant request

SECTIONAL OVERHEAD DOOR-NATURAL ANODIZED ALUMINUM FRAME WITH CLEAR INSULATED GLASS



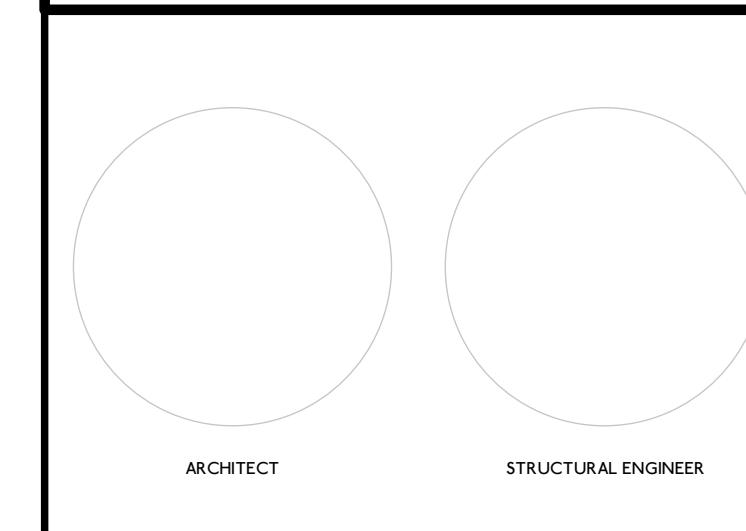
PARTIAL E. MIFFLIN ELEVATION

WILL BE HIDDEN BY LIVE/WORK COMPONENT



GENERAL NOTES

DATE	DESCRIPTION
05/11/15	PRELIMINARY REVIEW SET
09/21/15	DATE REVIEW SET



DESIGN PROGRESSION

bark DESIGN **GEBHARDT DEVELOPMENT**

WWW.BARK-DESIGN.COM
STUDIO@BARK-DESIGN.COM
608.333.1926

DATE: **12.28.15**

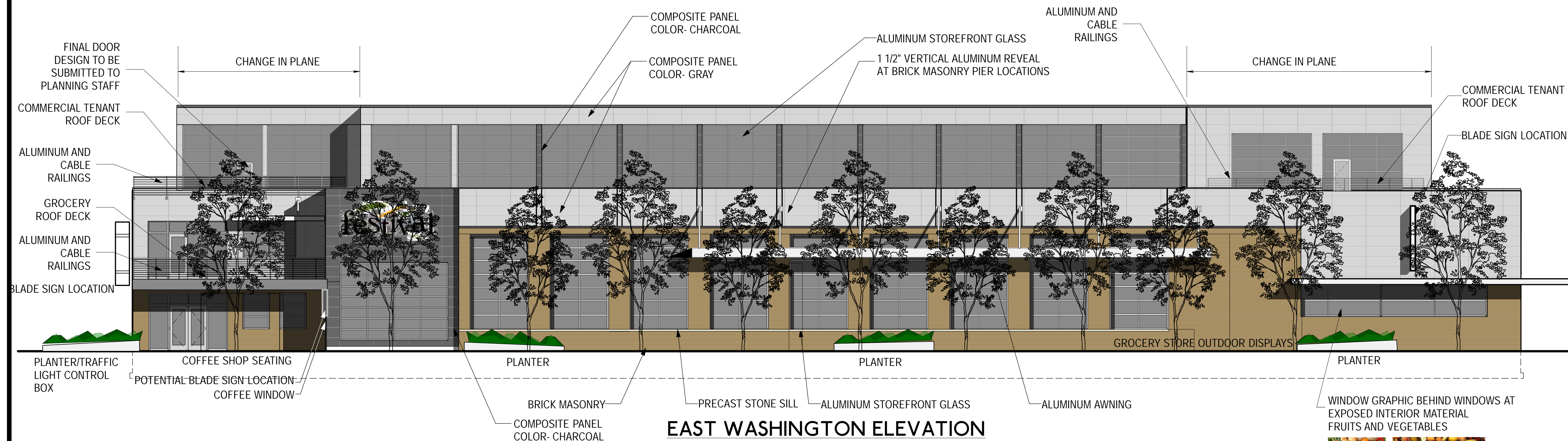
festival 80 EAST WASHINGTON AVENUE MADISON, WI

Glazing Percentages

March 2014
5454 s.f. = 50.5%
October 2015
5487 s.f. = 50.8%

Ground Level Retail Glazing Percentages

March 2014
2571 s.f. = 64.6%
October 2015
2652 s.f. = 66.7%



EAST WASHINGTON ELEVATION



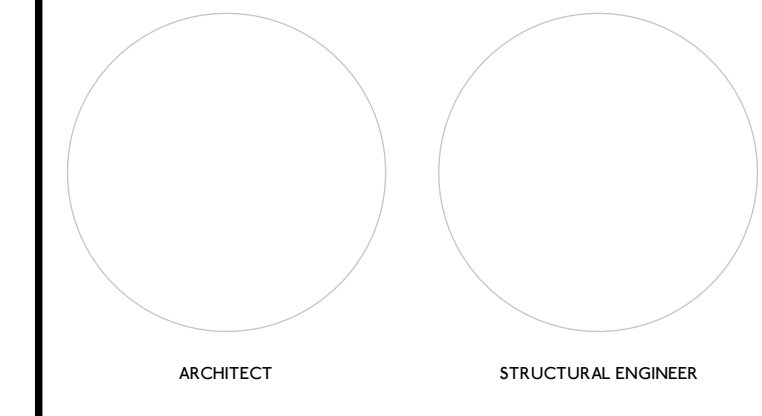
NORTH LIVINGSTON ELEVATION



MATERIALS

OPTION 1

DATE	DESCRIPTION
05.01.13	PRELIMINARY REVIEW SET
08.21.13	DATE REVIEW SET



DESIGN PROGRESSION

800 EAST WASHINGTON AVENUE
MADISON, WI

WWW.BARK-DESIGN.COM
STUDIO@BARK-DESIGN.COM
608.333.1928

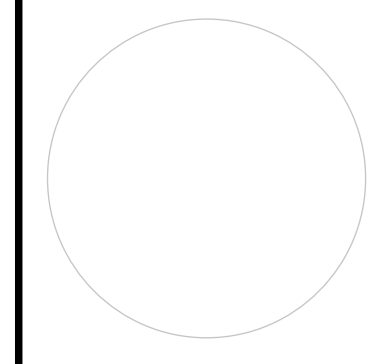
DATE
12.28.15

G4.1-1

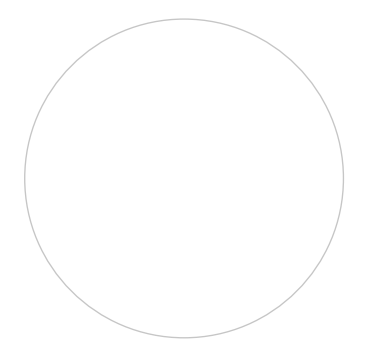


OPTION 1

DATE	DESCRIPTION
05.01.13	PRELIMINARY REVIEW SET
08.21.13	DAT REVIEW SET



ARCHITECT



STRUCTURAL ENGINEER

DESIGN PROGRESSION



festival 800 EAST WASHINGTON AVENUE
MADISON, WI

WWW.BARK-DESIGN.COM
STUDIO@BARK-DESIGN.COM
608.333.1928
DATE
12.28.15



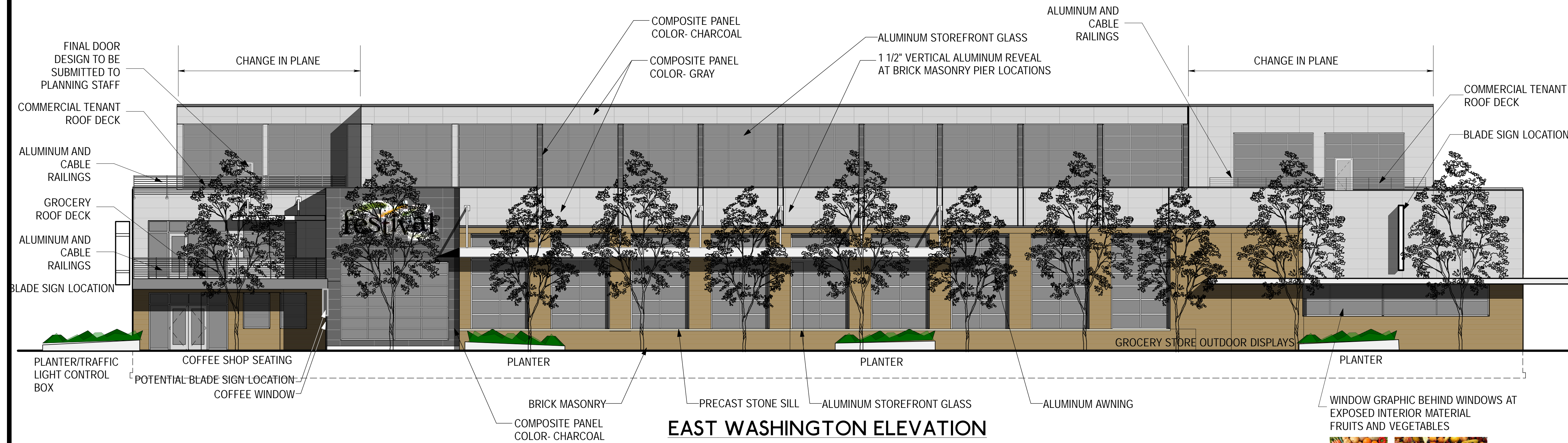
GENERAL NOTES

Glazing Percentages

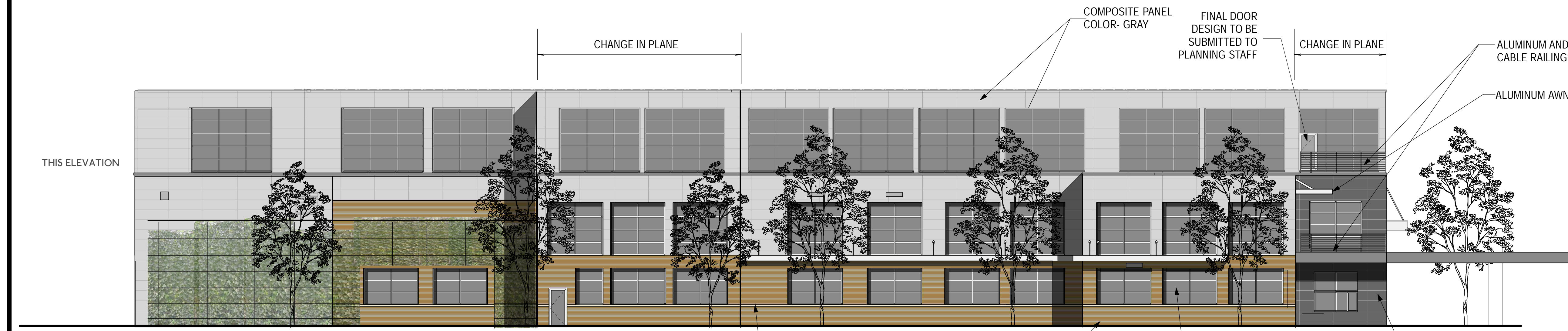
March 2014
5454 s.f. = 50.5%
October 2015
5487 s.f. = 50.8%

Ground Level Retail
Glazing Percentages

March 2014
2571 s.f. = 64.6%
October 2015
2652 s.f. = 66.7%



EAST WASHINGTON ELEVATION



NORTH LIVINGSTON ELEVATION

PLANTINGS TO INCLUDE EDIBLE BERRIES, BRAMBLES, LEGUMES, EDIBLE FLOWERS, GRAPE VINES, STRAWBERRIES



MATERIALS

OPTION 2

DATE	DESCRIPTION
05.01.13	PRELIMINARY REVIEW SET
08.21.13	DATE REVIEW SET

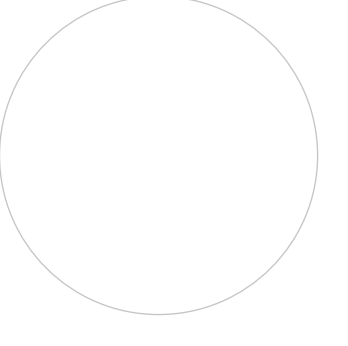
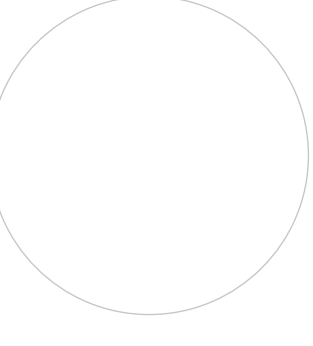
DESIGN PROGRESSION

		WWW.BARK-DESIGN.COM STUDIO@BARK-DESIGN.COM 608.333.1928
		DATE 12.28.15
	810 EAST WASHINGTON AVENUE MADISON, WI	G4.1-2



OPTION 2

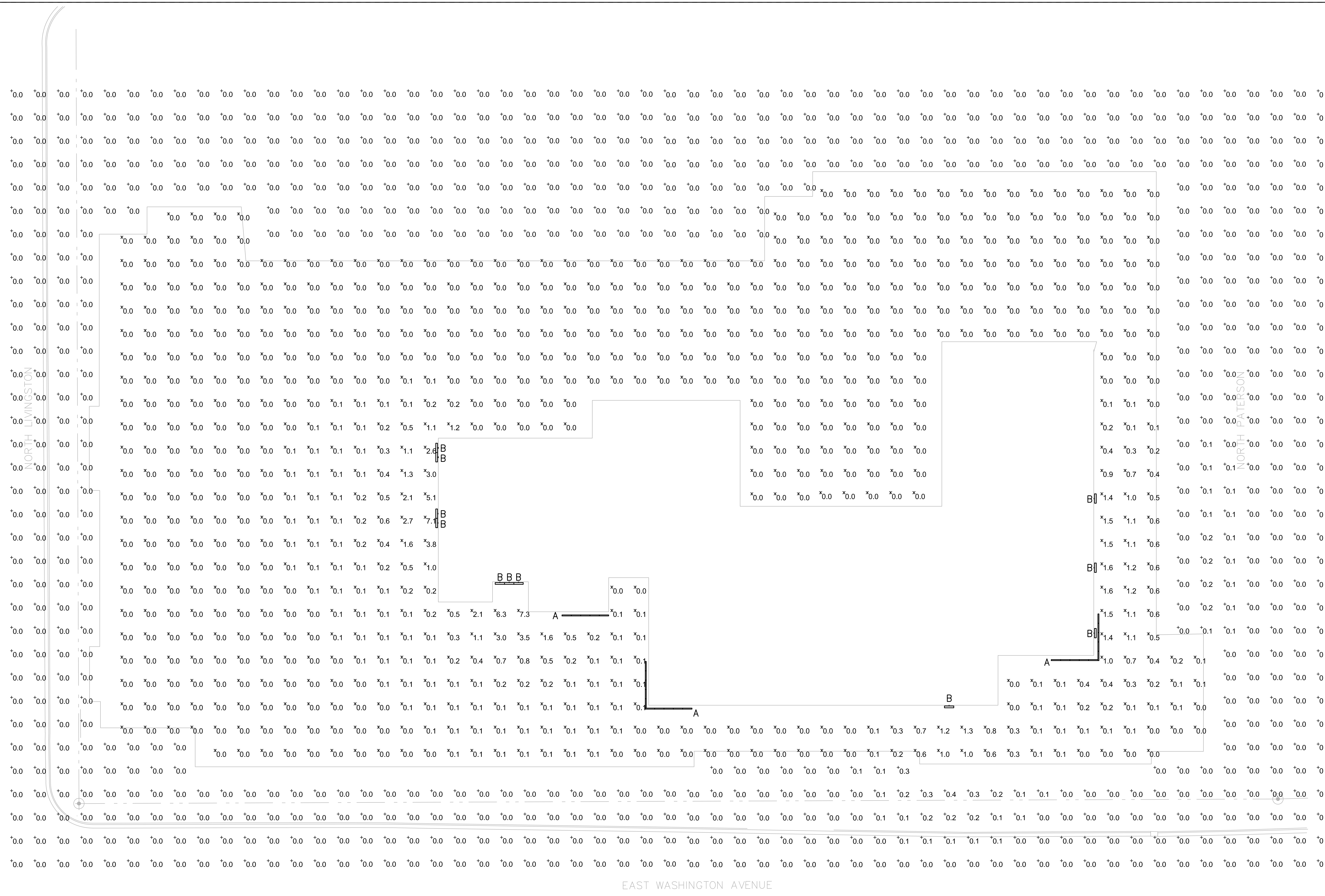
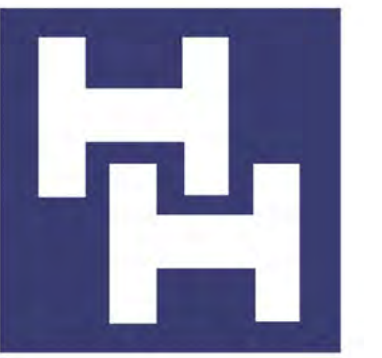
DATE	DESCRIPTION
05.01.13	PRELIMINARY REVIEW SET
08.21.13	DAT REVIEW SET

 ARCHITECT	 STRUCTURAL ENGINEER
--	--

DESIGN PROGRESSION

	810 EAST WASHINGTON AVENUE MADISON, WI

WWW.BARK-DESIGN.COM STUDIO@BARK-DESIGN.COM 608.333.1928
DATE 12.28.15



NO.	DATE	DESCRIPTION

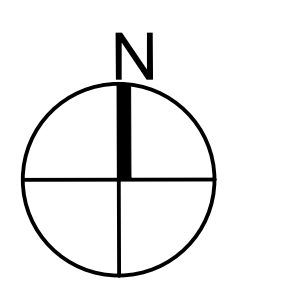
KEY PLAN

OWNER

THE GALAXIE
810, 822, 834 East Washington Avenue
Madison, WI

SITE PLAN - ILLUMINANCE CALCULATIONS

DRAWING TITLE



SCALE: 1/16" = 1'-0" DATE: 01/05/2016

JOB NUMBER: AP14-70

CONSTRUCTION SET

SUBMISSION

E300

DRAWING NUMBER

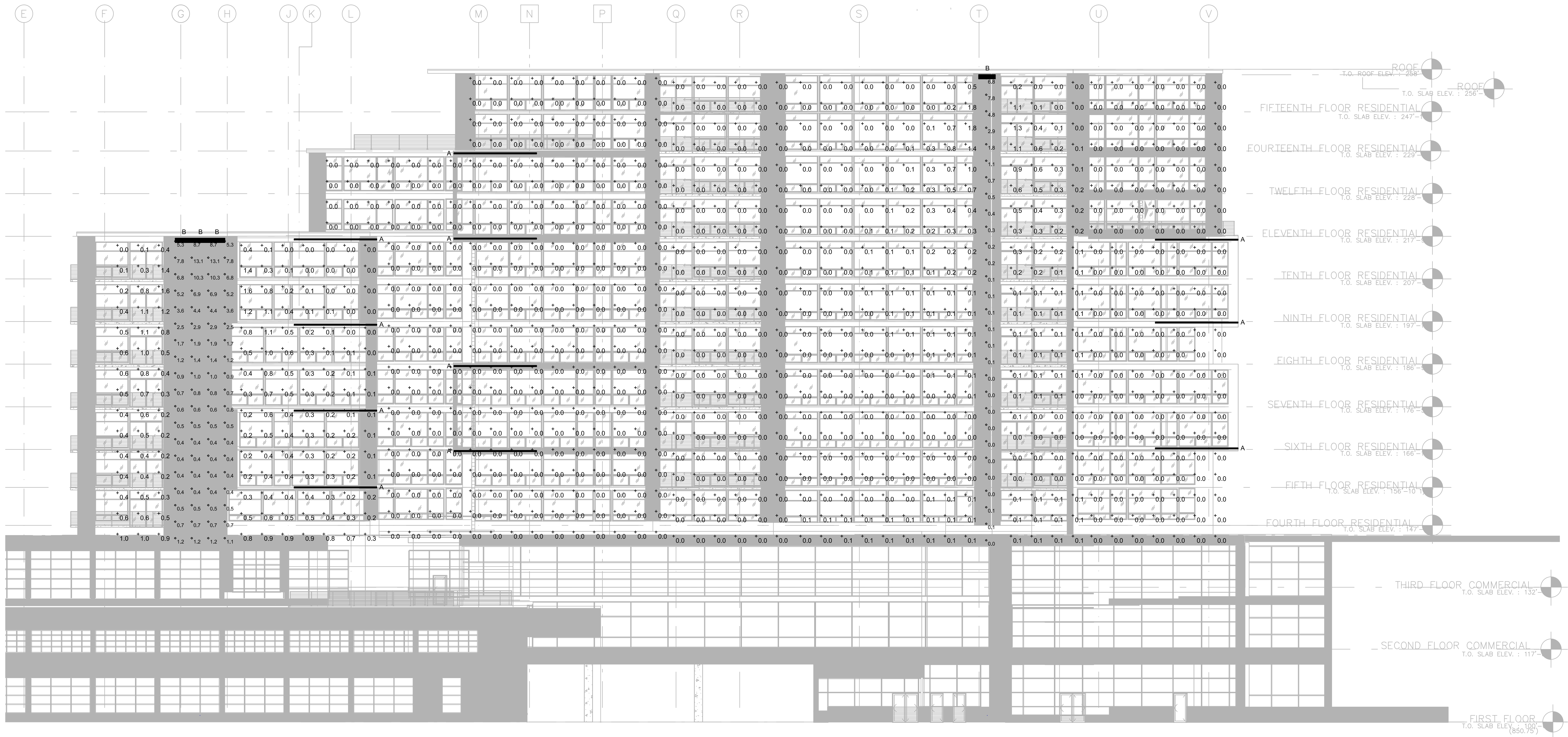
LIGHT FIXTURE SCHEDULE						
TYPE	LAMP DATA		DESCRIPTION	LIGHTING FIXTURE		MOUNT
	NO.	TYPE		MANUFACTURER	CATALOG NO.	
A	NA	LED	FLEXIBLE BORDER TUBE (BLUE)	BARRON LIGHTING	FBTCJ-B-XX-24V	RECESSED
B	NA	LED	FAÇADE FLOODLIGHT	LUMENPULSE	LOGHO-277-48-30K-10X10-WAM12-SI	EXT ARM

ILLUMINANCE STATISTICS				
DESCRIPTION (AREA)	SYMBOL	AVG	MAX	MIN
GROUND	+	0.0FC	0.4FC	0.0FC
COMMERCIAL ROOF	*	0.2FC	7.3FC	0.0FC

NOTES:
1. SEE SHEETS E301-E303 FOR ILLUMINANCE ON BUILDING ELEVATIONS
2. SEE SHEET E304 FOR FIXTURE MOUNTING DETAILS

SHEET INDEX:
E300 SITE PLAN - ILLUMINANCE CALCULATIONS
E301 E. WASHINGTON ELEVATION - ILLUMINANCE CALCULATIONS
E302 N. PATERSON ELEVATION - ILLUMINANCE CALCULATIONS
E303 N. LIVINGSTON ELEVATION - ILLUMINANCE CALCULATIONS
E304 SITE LIGHTING DETAILS

EAST WASHINGTON AVENUE



E. WASHINGTON ELEVATION - ILLUMINANCE CALCULATION
SCALE: 3/32" = 1'-0"

ILLUMINANCE STATISTICS				
DESCRIPTION (AREA)	SYMBOL	AVG	MAX	MIN
WEST LIMESTONE PANEL	0	2.6 FC	13.1 FC	0.4 FC
EAST LIMESTONE PANEL	0	1.0 FC	7.8 FC	0.0 FC
BUILDING FAÇADE	+	0.1 FC	1.8 FC	0.0FC

NO.	DATE	DESCRIPTION

KEY PLAN

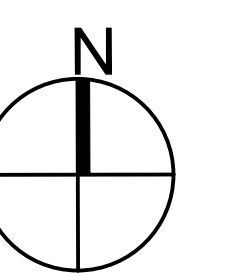
OWNER

THE GALAXIE
810, 822, 834 East Washington Avenue
Madison, WI

PROJECT

ELEVATION - ILLUMINANCE CALCULATIONS

DRAWING TITLE



SCALE: 3/32" = 1'-0" DATE: 06/05/2016

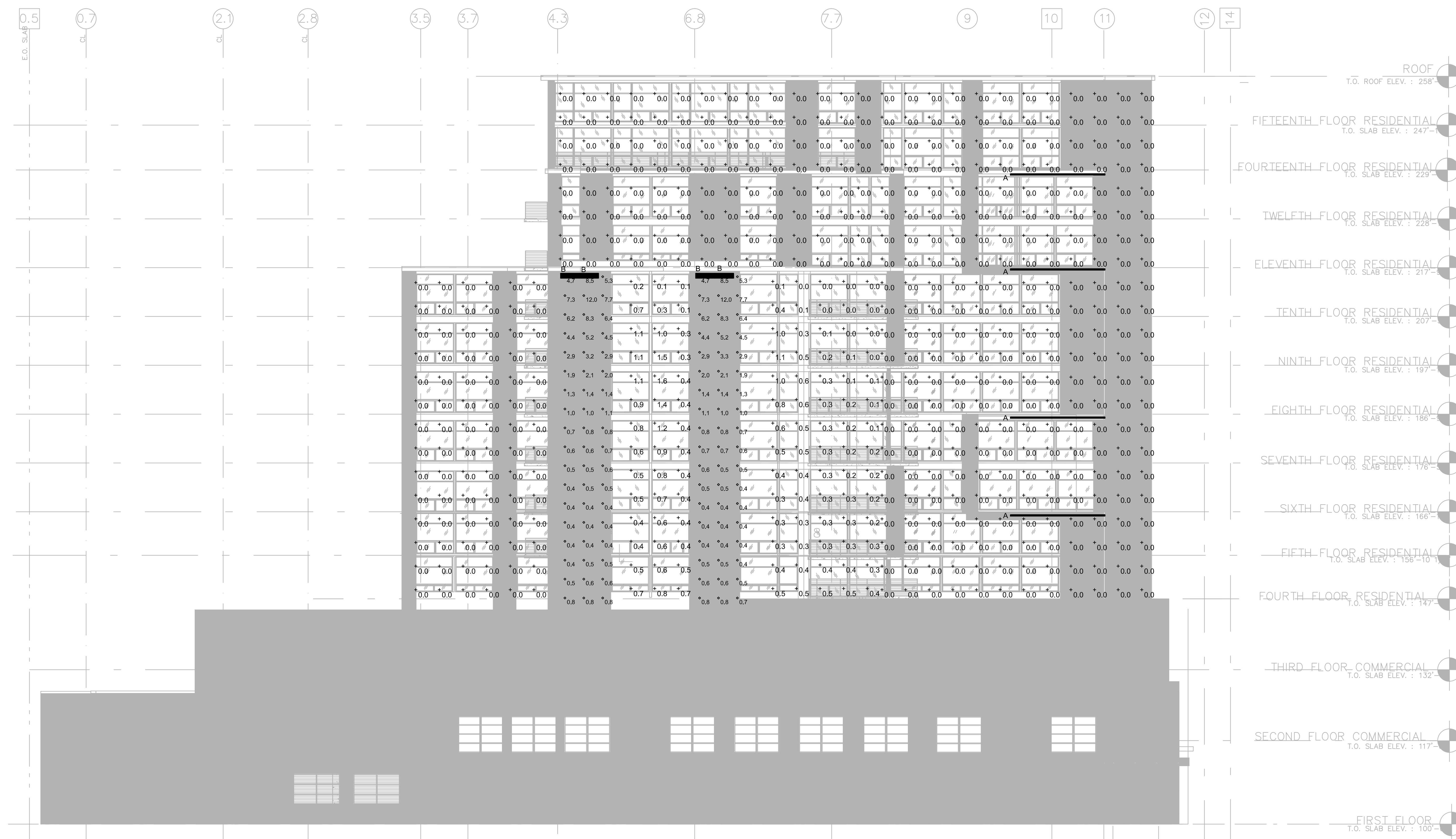
JOB NUMBER: AP14-70

CONSTRUCTION SET

SUBMISSION

E301

DRAWING NUMBER



N. LIVINGSTON ELEVATION — ILLUMINANCE CALCULATION
SCALE: 3/32" = 1'-0"

ILLUMINANCE STATISTICS				
DESCRIPTION (AREA)	SYMBOL	AVG	MAX	MIN
LIMESTONE PANELS	◇	2.2 FC	12.0 FC	0.4 FC
BUILDING FAÇADE	+	0.5 FC	1.8 FC	0.0 FC

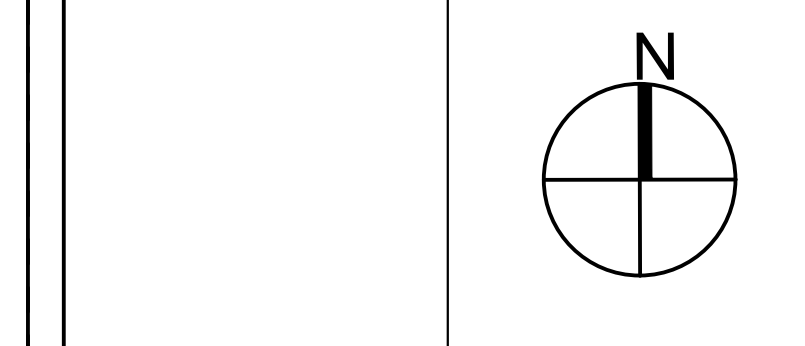
NO.	DATE	DESCRIPTION

KEY PLAN

OWNER
THE GALAXIE
810, 822, 834 East Washington Avenue
Madison, WI

PROJECT
ELEVATION - ILLUMINANCE CALCULATIONS

DRAWING TITLE



SCALE: 3/32" = 1'-0" DATE: 06/05/2016

JOB NUMBER: AP14-70

CONSTRUCTION SET

SUBMISSION
E303

DRAWING NUMBER



H&H Electric Company, Inc.
3201 Latham Drive
Madison, WI 53713
T: 608.273.4464 | F: 608.273.9764
www.hhgroupholdings.com

Specification Sheet

lumenfacade™
WHITE & STATIC COLORS

Client: _____ Project name: Galaxie
Order# _____ Type B Qty _____

FEATURES AND BENEFITS

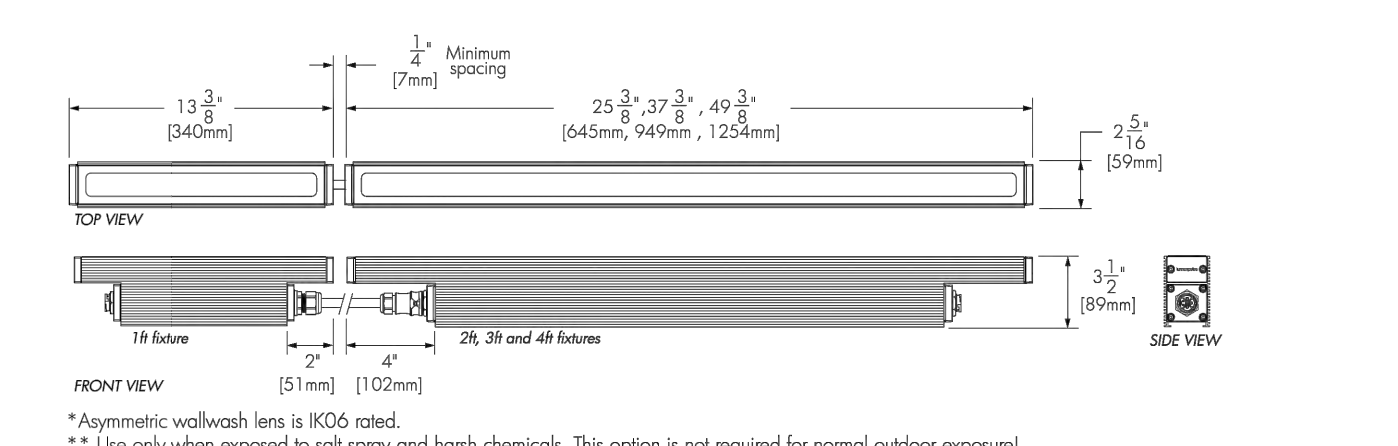
- Physical:**
- Low copper content extruded aluminum housing
 - Available in 1", 2", 3" or 4" sections
 - Electrostatically applied polyester powder coat finish
 - Machined aluminum end caps and silicone gaskets
 - Stainless steel hardware
 - Clear tempered glass
 - Asymmetric wallwash, 10° x 10°, 10° x 60°, 30° x 60° or 60° x 60° optics
 - IP65
 - IK07 rated (asymmetric wallwash lens is IK06 rated)
 - Corrosion-resistant coating for hostile environments*
 - Meets IEC ANSI C136.31 Vibration standard for bridge applications

- Performance:**
- CRI values: 85+ (2700K), 80+ (3000K), 78+ (4000K)
 - Lumen maintenance 120,000 hrs (L70 @ 25°C)
 - Lumen measurements comply with ILM 79-08 standard
 - Resolution per foot or per fixture (configured with LumenD V3 software & RDM)
 - Operating temperatures: 25°C to 50°C (-13°F to 122°F)

- Electrical:**
- Line voltage luminaire for 100 to 277V
 - Power and data in 1 cable (#16-5)
 - Up to 88 feet with a single 120V power feed, HO version
 - 5W/ft version meets ASHRAE standards for linear lighting on building facades
 - 8.5W/ft Regular Output version
 - 15.25W/ft High Output version
 - Dimming options: 0-10 volt, DMX/RDM enabled, DALI, Lumenark or LumenD EcoSystem® enabled



4ft HO 4000K	Ballastless Intensity	Output [lm]	Intensity [peak cd]
10"x10"	-	-	-
10"x60"	3,692	19,654	-
30"x60"	3,584	4,750	-
60"x60"	3,676	3,137	-
WW	3,592	5,139	-

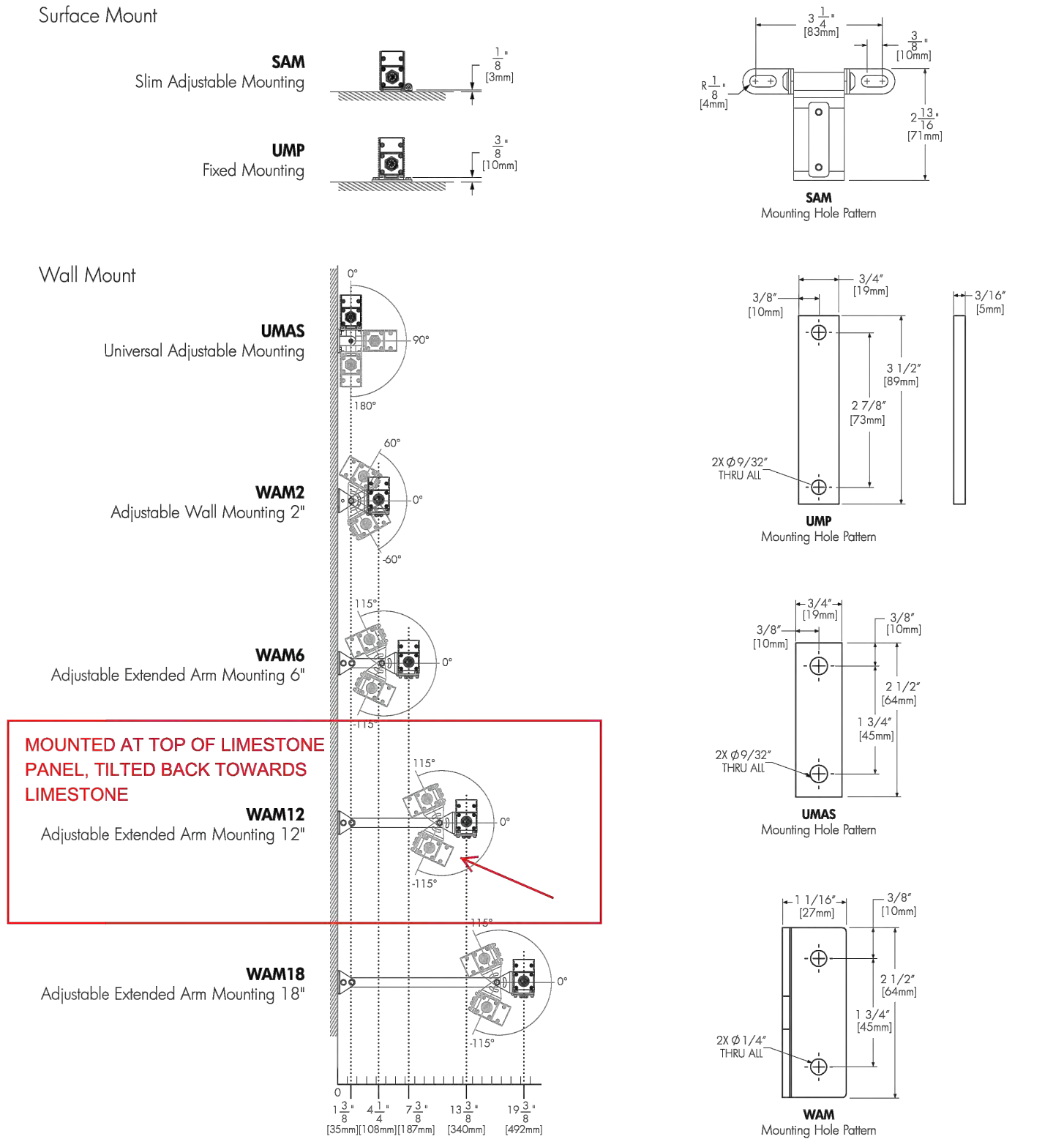


1/10 © Copyright Lumenpulse 2015 1.877.937.3003 5-year limited warranty.
1731 Richardson, Suite 1503 Fitchburg, WI 53711
www.lumenpulse.com
01/02/2015 H&H Electric Company, Inc. for or consider Standard Terms and Conditions of Sale.

Specification Sheet

lumenfacade™
WHITE & STATIC COLORS

MOUNTING OPTIONS



3/10 © Copyright Lumenpulse 2015 1.877.937.3003 5-year limited warranty.
1731 Richardson, Suite 1503 Fitchburg, WI 53711
www.lumenpulse.com
01/02/2015 H&H Electric Company, Inc. for or consider Standard Terms and Conditions of Sale.



FBTCJ
COLOR JACKETED LED FLEXIBLE BORDER TUBE

The FBTCJ Series combines state of the art technology with a flexible, durable housing to create an extremely bright, uniform illumination with a versatility that makes it perfect for any custom design application. The FBTCJ is composed of a superior curved profile that allows for a large viewing angle. The FBTCJ has a colored jacket to match the color of the LEDs, which creates a bright, vibrant color even in daylight conditions with the lights off.

- FEATURES**
- Available in red, blue, green and several color temperatures of white
 - Energy efficient LEDs consume 3.7W/ft or less, saving up to 70% or more over traditional neon
 - Indoor and outdoor rated
 - Flexible PVC housing can conform to almost any angle, virtually unbreakable
 - Colored jacket housing to match the LEDs for an even more vibrant color - to maintain effect in daylight
 - Uniform lighting with no "hotspots"
 - Easy to install using either aluminum mounting clips or 3" extruded aluminum mounting channels
 - Meets or exceeds standards for UL100 low voltage lighting systems
 - 3 year warranty

- TECHNICAL SPECIFICATION**
- 2 wire, single color, flexible border tubing
 - Voltage: 24VDC
 - Frequency: 60Hz
 - IP rating: IP68
 - Dimensions: 0.45" wide, 1.14" high
 - Operating distance 45" when power is supplied to both ends for white (2700K, 3500K, 4500K, 5700K) and 80" when power is supplied to both ends for all other colors
 - Beam angle: 160°

- PRODUCT SPECIFICATIONS**
- LED specs:
 - Rated life: 50,000 hours
 - 18 LEDs per foot
 - 0.27" distance between LEDs
 - Construction: flexible, weatherproof, cool to touch, UV inhibited, PVC housing
 - Kol length: 80"
 - Mounting: 2" mounting clips (FBTCJ-MC) or mounting channels available in standard (FBTCJ-LCH) or locking mode (FBTCJ-LCH-L)
 - Dimming: Dimming capable to 10% and compatible with most low voltage (DALI) magnetic dimmers
 - Operating temperature: -25° to 140°F (-13°F to 40°C)
 - 3 year warranty, does not apply to damages caused by improper installation, abuse, fire or acts of God

- APPLICATIONS**
- Border
 - Cove lighting
 - Bridges
 - Gazebos
 - Roof lines
 - Signage
 - Accent lighting

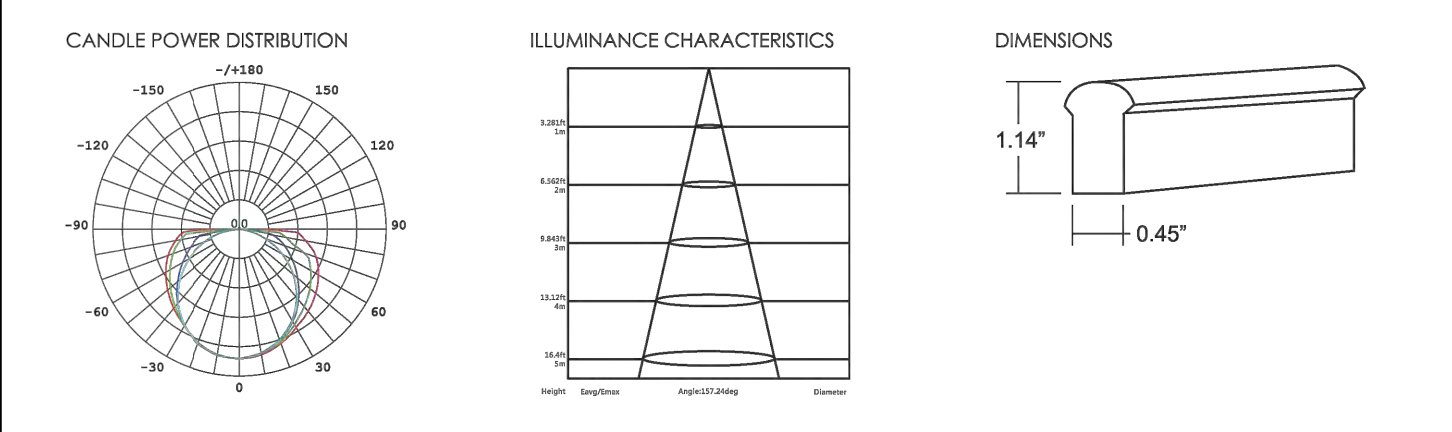


1602000 0015 1 of 3

TECHNICAL / ILLUMINATION INFORMATION

Color	Voltage	Rated Power W/ft	Cutting Increment	Max Run ¹	CCT or Wavelength	Lumens lm/ft
Warm White	24VDC	3.7	3"	80"	2700K	116
Pure White	24VDC	3.7	3"	80"	3500K	116
Cool White	24VDC	3.7	3"	80"	4500K	116
Daylight White	24VDC	3.7	3"	80"	5700K	116
Red	24VDC	2	5"	45"	620 nm	30
Green	24VDC	3.2	3"	45"	520 nm	56
Blue	24VDC	3.2	5"	45"	460 nm	4

¹ When unit has power supplied to both ends



ORDERING INFORMATION

Example: FBTCJ-WW-80-24V

Series	Color	Length	Voltage
FBTCJ	WW = Warm White (2700K)	80 = 80 Feet	24V = 24 Volt DC
	WP = Pure White (3500K)	G = Green	XX = Custom Length
	WC = Cool White (4500K)	B = Blue	
	WD = Daylight White (5700K)		

- Notes**
- Color temperature can vary ±5%
 - Custom lengths ordered specific to product cutting increments
 - Requires transformer, ordered separately

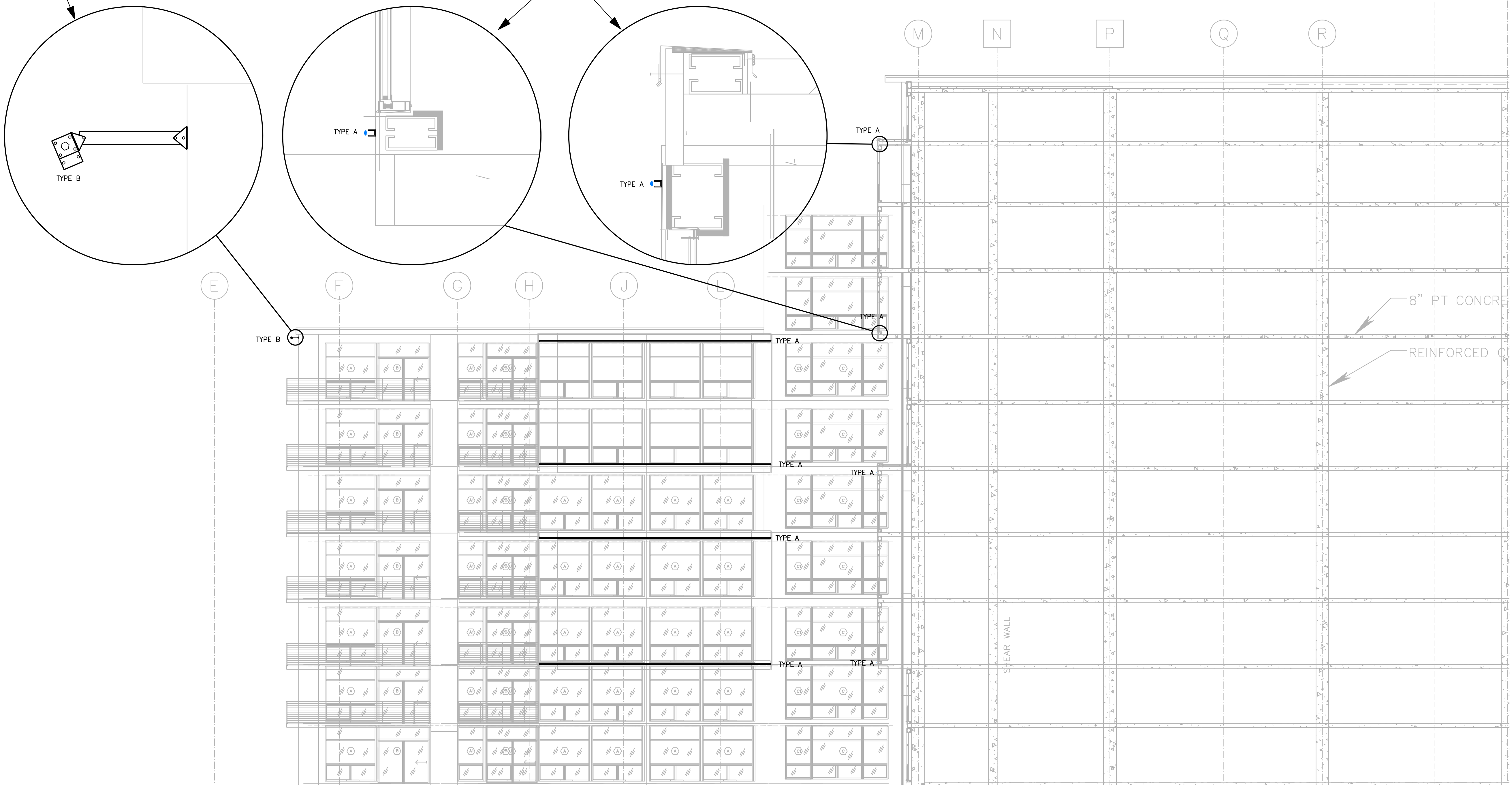
24VDC NON DIMMING TRANSFORMER ORDERING INFORMATION (ORDER AS SEPARATE LINE ITEM)

Part Number	Description	Dimensions (AxHxC)
XFMR-24-20	24 Volt, 20 Watt, Class 2 Power Supply	4.45" x 1.37" x 1.07"
XFMR-24-35	24 Volt, 35 Watt, Class 2 Power Supply	5.8" x 1.37" x 1.18"
XFMR-24-60	24 Volt, 60 Watt, Class 2 Power Supply	6.39" x 1.67" x 1.25"
XFMR-24-150	24 Volt, 150 Watt, Class 2 Power Supply	8.74" x 2.67" x 1.52"



FIXTURE TYPE B

FIXTURE TYPE A



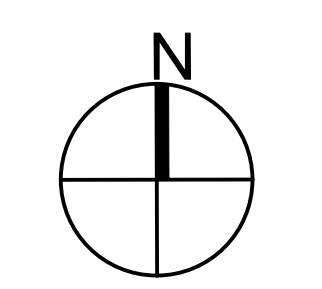
NO.	DATE	DESCRIPTION

KEY PLAN

OWNER
THE GALAXIE
810, 822, 834 East Washington Avenue
Madison, WI

PROJECT
SITE LIGHTING DETAILS

DRAWING TITLE



SCALE: NONE DATE: 01/05/2016

JOB NUMBER: AP14-70

CONSTRUCTION SET

E304

SUBMISSION

DRAWING NUMBER