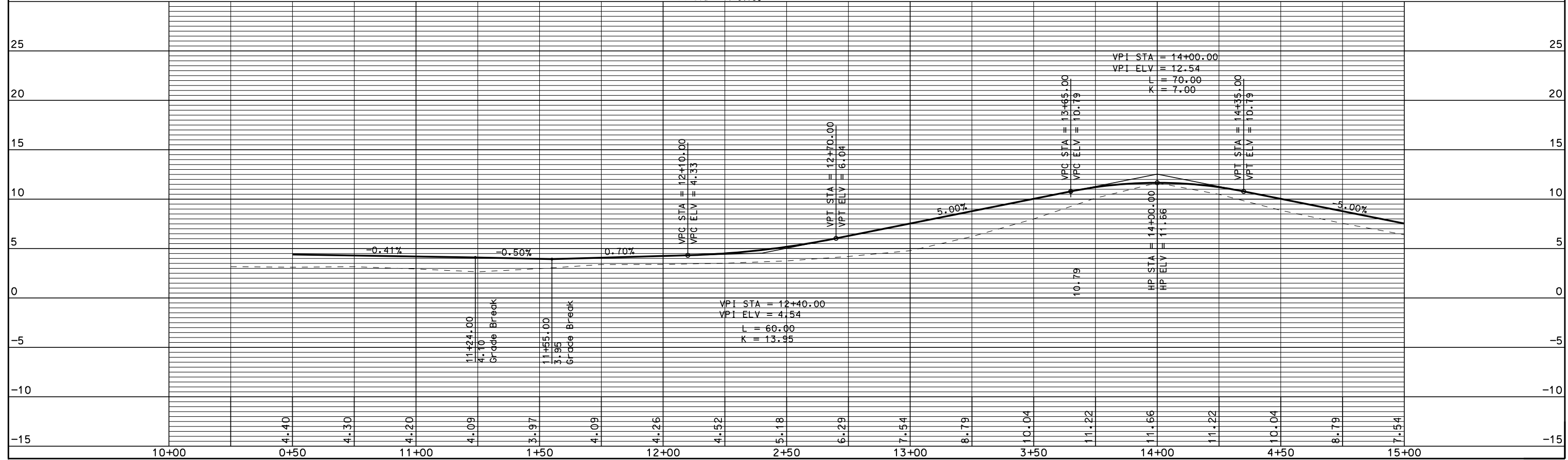
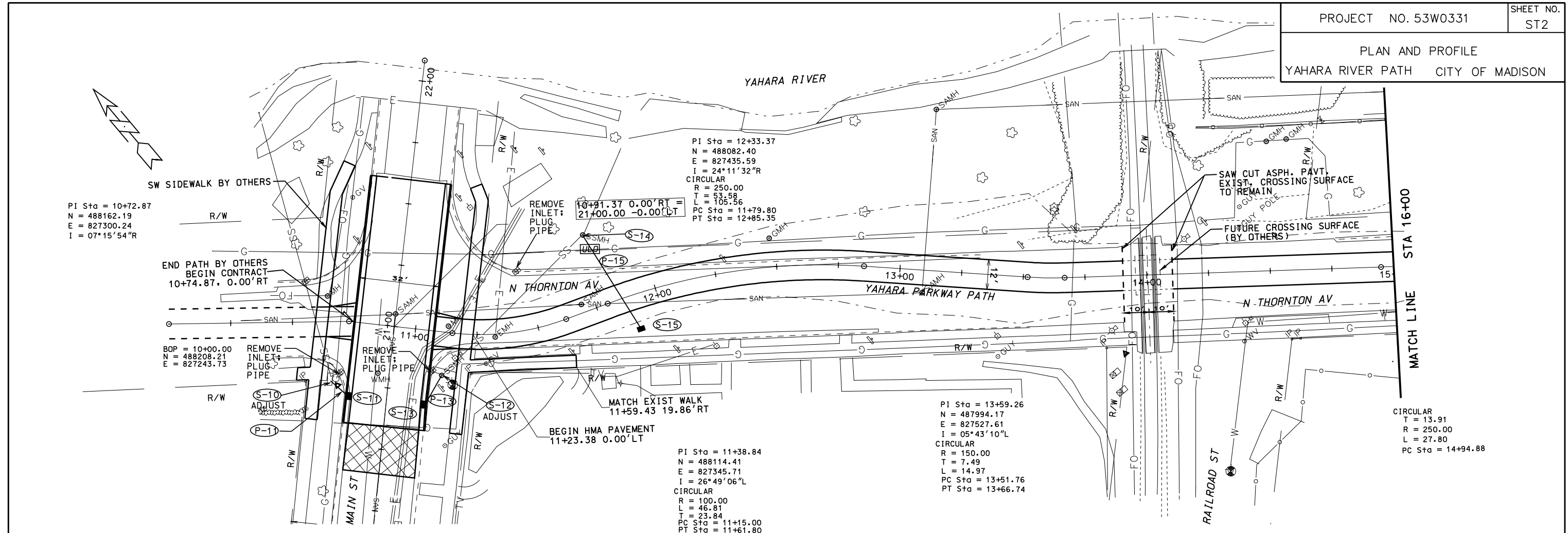


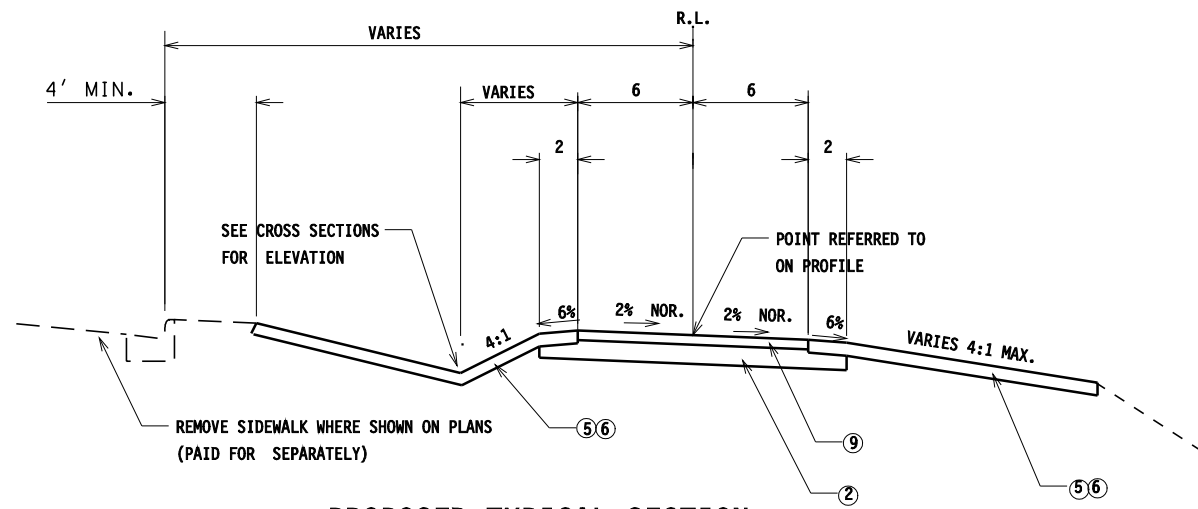
PLAN AND PROFILE
YAHARA RIVER PATH CITY OF MADISON

PLOT USER: enccsf
PLOT NAME:
REV. DATE: 13-JUL-2006 09:05

ORIGINATOR: CITY OF MADISON, STREETS DIVISION



TYPICAL SECTIONS
YAHARA PARKWAY PATH
& E MAIN STREET CITY OF MADISON



PROPOSED TYPICAL SECTION

YAHARA PATH STA. 55+85 - STA. 59+82

NOTES:

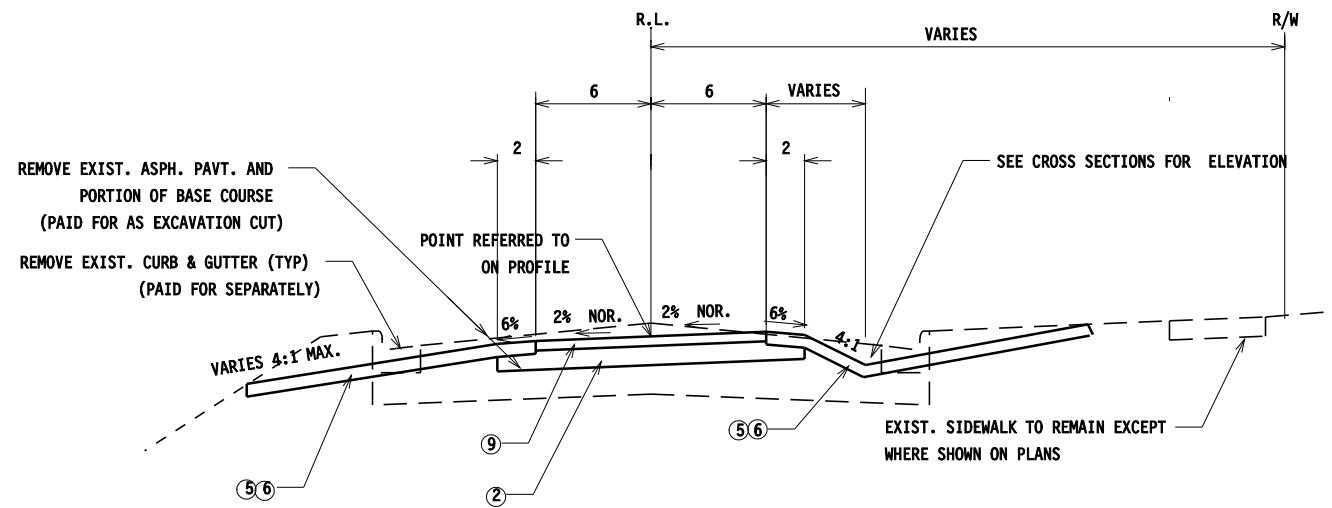
1. HMA PAVEMENTS SHALL BE CONSTRUCTED AS FOLLOWS:

TYPE	LAYER	THICK.	NOM. SIZE
4½" E-1	UPPER	1.75"	12.5 MM
	LOWER	2.5"	19.0 MM
3.25" E-1	ONE LIFT	3.25"	12.5 MM

2. CONSTRUCT SIDEWALK ONLY WHERE SHOWN ON PLANS OR DIRECTED BY ENGINEER. MATCH EXISTING SIDEWALK IN OTHER LOCATIONS.

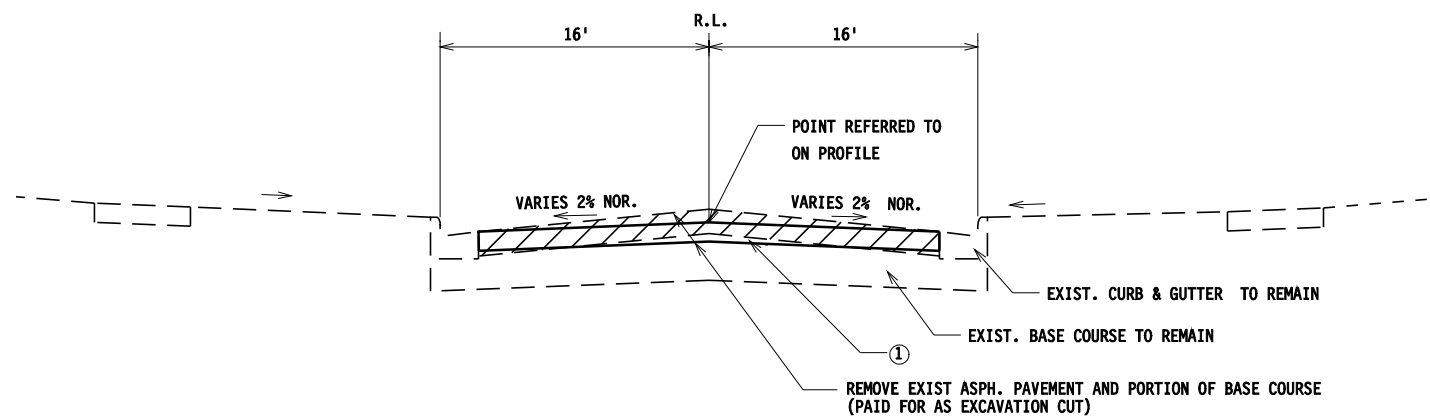
LEGEND

- ① 4 ½ IN. HMA PAVEMENT, TYPE E-1 (NOTE 1)
- ② 6 IN. CRUSHED AGGREGATE BASE COURSE GRADATION NO. 2
- ③ 6 IN. CRUSHED AGGREGATE BASE COURSE GRADATION NO. 1
- ④ CONCRETE CURB & GUTTER, TYPE A (30-INCH)
- ⑤ SEED, MULCH AND FERTILIZER (PERMANENT SEEDING)
- ⑥ 4 IN. TOPSOIL
- ⑦ CONCRETE SIDEWALK, 5 INCH (NOTE 2)
- ⑧ 3 IN. CRUSHED AGGREGATE BASE COURSE, GRADATION NO. 2
- ⑨ 3½ IN. HMA PAVEMENT, TYPE E-1 (NOTE 1)



PROPOSED TYPICAL SECTION

YAHARA PATH STA. 11+23 - STA. 17+22



PROPOSED TYPICAL SECTION

E. MAIN ST. STA. 20+40 - STA. 20+60

LEVELS ON = 1, 2, 4, 5, 6, 7, 8, 9, 10, 11, 12, 13, 14, 15, 16, 17, 18, 19, 20, 21, 22, 23, 24, 25, 26, 27, 28, 29, 30, 31, 32, 33, 34, 35, 36, 37, 38, 39, 41, 42, 43, 44, 45, 46, 47, 48, 49, 51, 52, 53, 54, 55, 56, 57, 58, 59, 61, 63