
PARKING DIVISION ACTIVITY REPORT: 3RD QUARTER 2019

TRANSPORTATION COMMISSION

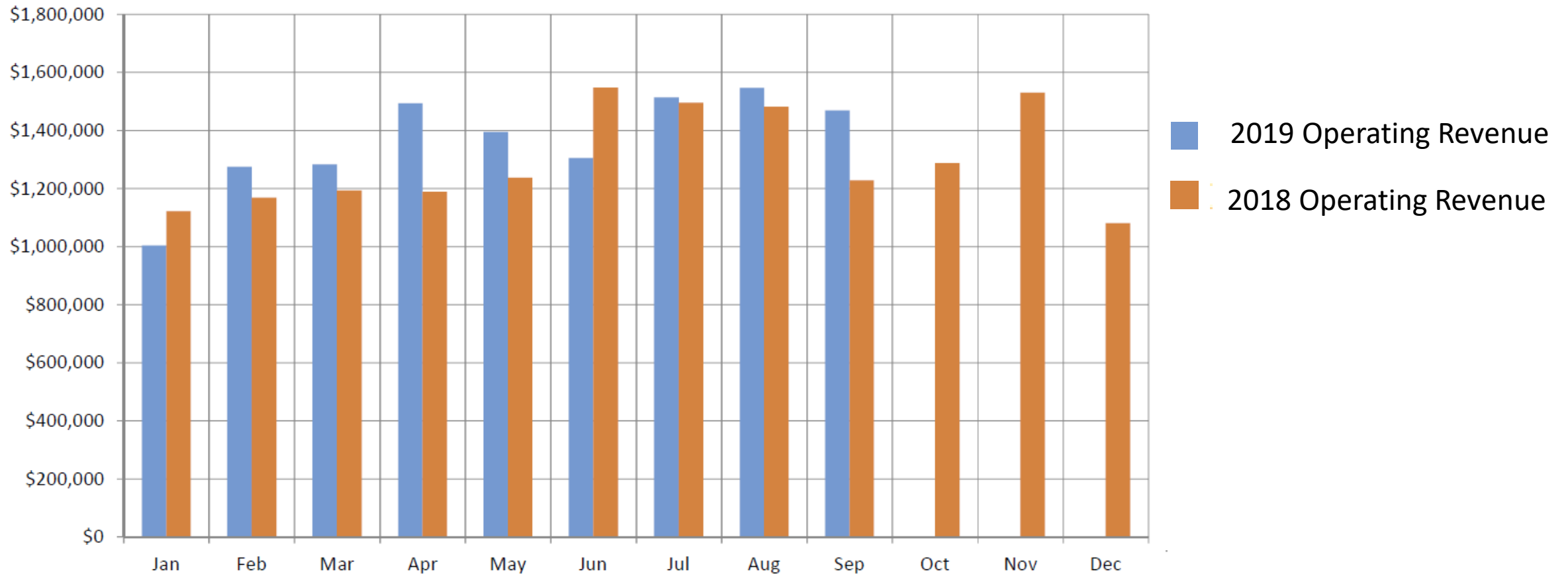
NOVEMBER 20, 2019



2019 YTD (THROUGH SEPTEMBER) REVENUE

YTD 2019 Revenue is \$12,287,454. Increased 5% compared with the same period 2018 (Revenue from new South Livingston Street Garage accounts for 4% of increase).

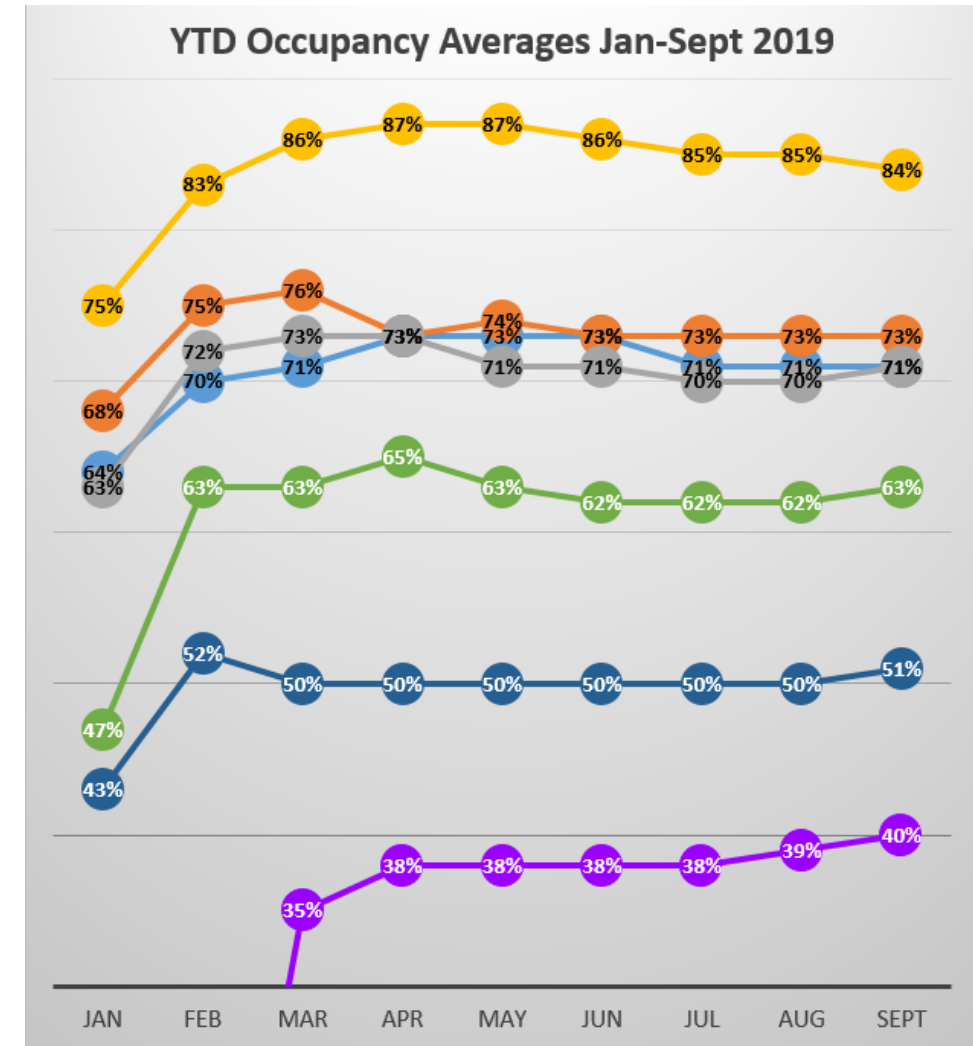
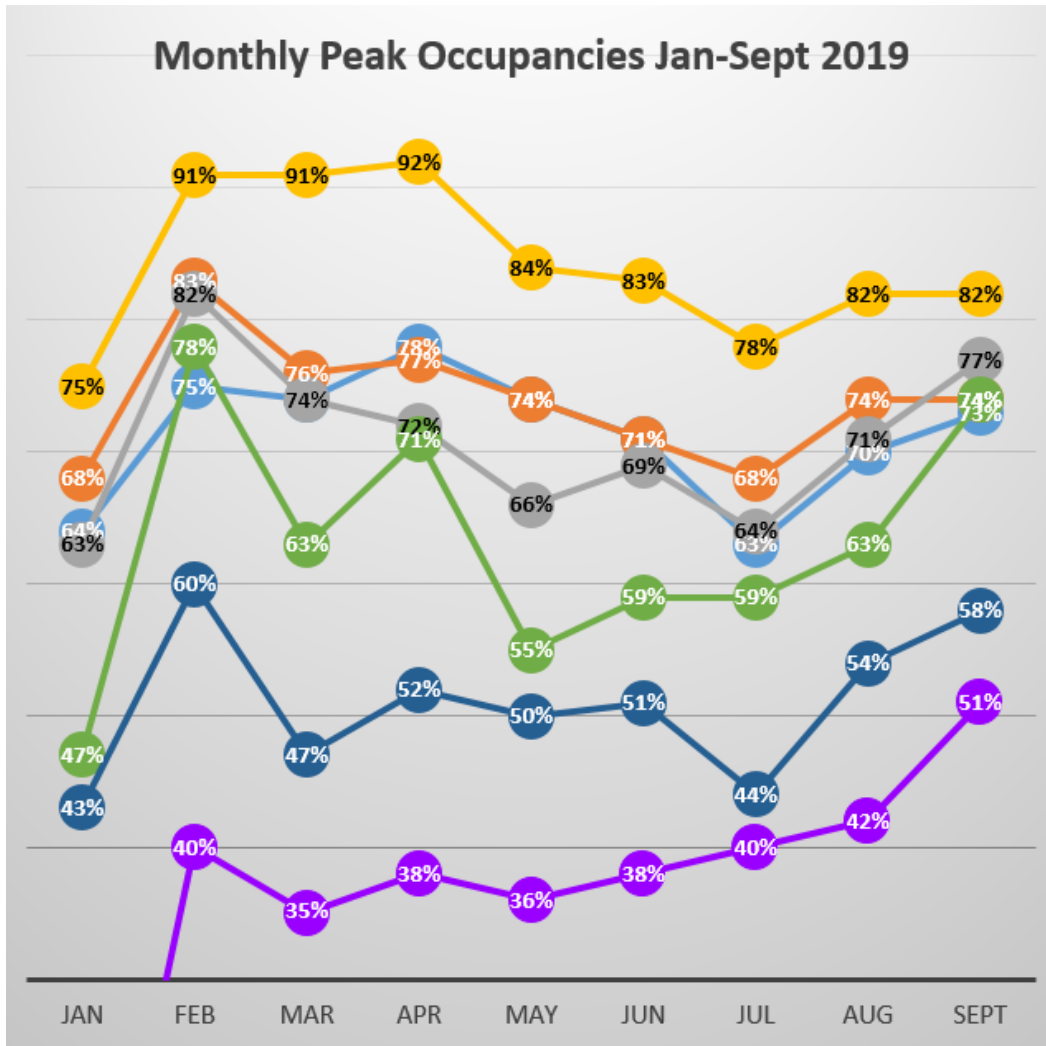
2019 vs 2018 Operating Revenue



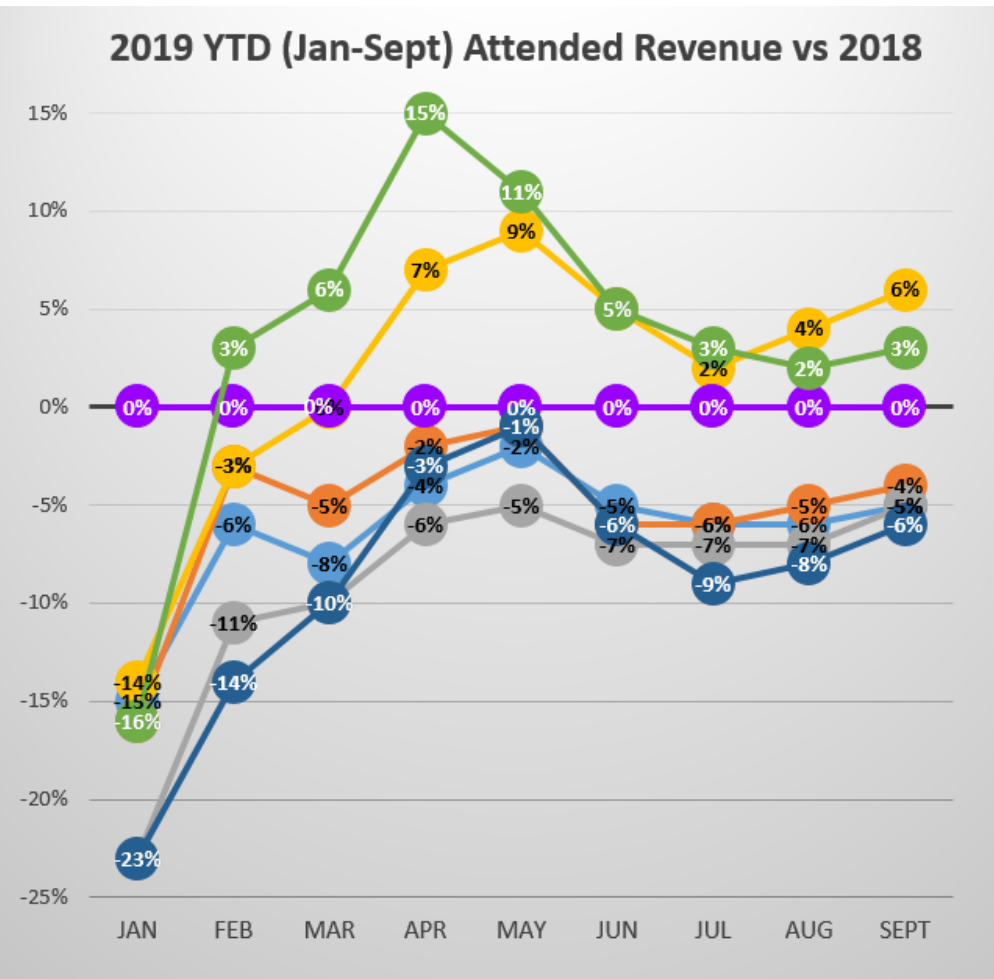
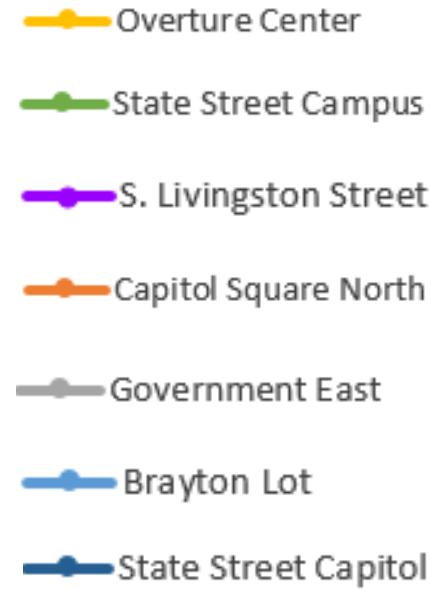
GARAGE PEAK OCCUPANCY AND NON-PERMIT REVENUES (HOURLY & SPECIAL EVENT) 2019 VS. 2018 YTD THROUGH SEPTEMBER

Facility	Weekday 10 am - 2pm Peak Occupancies (YTD through September)			Attended Facilities Revenues (YTD through September)			
	2018	2019	% Change	2018	2019	\$ Change	% Change
Brayton Lot	80%	71%	-9%	\$525,031	\$497,420	-\$27,611	-5%
Capitol Square North	72%	73%	1%	\$966,015	\$928,430	-\$37,584	-4%
Government East	72%	71%	-1%	\$1,319,928	\$1,249,945	-\$69,983	-5%
Overture Center	76%	84%	8%	\$1,002,466	\$1,066,582	\$64,115	6%
S. Livingston Street	-	40%	-	-	\$241,659	-	-
State Street Campus	61%	63%	2%	\$2,516,881	\$2,598,098	\$82,217	3%
State Street Capitol	60%	51%	-9%	\$1,321,734	\$1,237,060	-\$84,674	-6%

2019 PEAK OCCUPANCIES BY MONTH & YTD AVERAGE



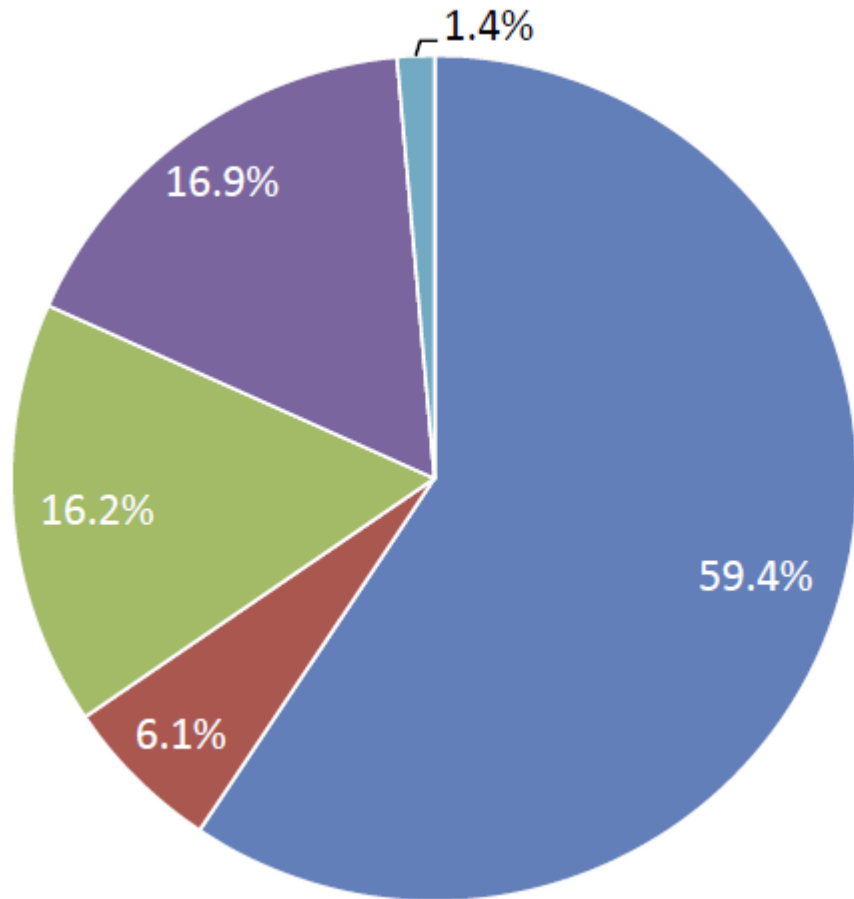
2019 YTD % CHANGE IN REVENUE COMPARED WITH 2018



Facility	Jan	Feb	Mar	Apr	May	Jun	Jul	Aug	Sept
Brayton Lot	-15%	-6%	-8%	-4%	-2%	-5%	-6%	-6%	-5%
Capitol Square North	-16%	-3%	-5%	-2%	-1%	-6%	-6%	-5%	-4%
Government East	-23%	-11%	-10%	-6%	-5%	-7%	-7%	-7%	-5%
Overture Center	-14%	-3%	0%	7%	9%	5%	2%	4%	6%
S. Livingston Street	0%	0%	0%	0%	0%	0%	0%	0%	0%
State Street Campus	-16%	3%	6%	15%	11%	5%	3%	2%	3%
State Street Capitol	-23%	-14%	-10%	-3%	-1%	-6%	-9%	-8%	-6%

2019 REVENUE BY CATEGORY January - September

2019 YTD September Revenue

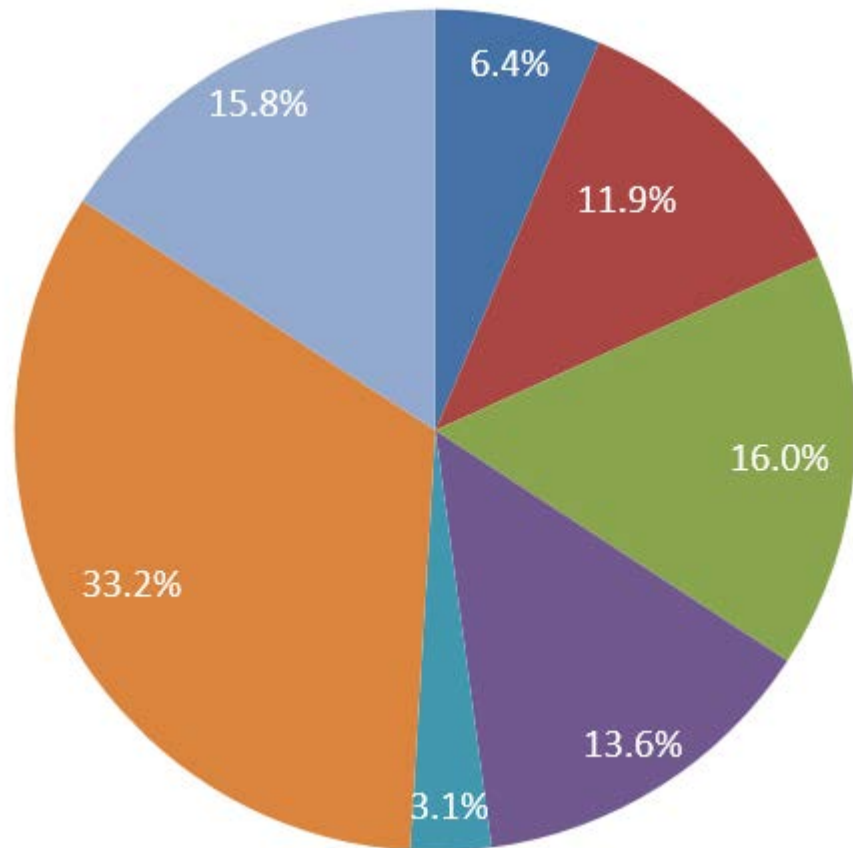


- Garages
- Meters-Off Street
- Meters-On Street
- Monthly/LT Lease
- Other

Category	Revenue	% of Revenue
Garages	\$7,295,479	59.4%
Meters-Off Street	\$749,809	6.1%
Meters-On Street	\$1,994,105	16.2%
Monthly/LT Lease	\$2,074,032	16.9%
Other	\$174,028	1.4%
Total	\$12,287,454	100.0%

Attended Facilities Revenue by Garage 2019 YTD through Sept

Facility	Attended Facilities Revenue (Non-Permit)	% of Attended Revenue
Brayton Lot	\$497,420	6.4%
Cap Sq North	\$928,430	11.9%
Gov East	\$1,249,945	16.0%
Overture Center	\$1,066,582	13.6%
S. Livingston Street	\$241,659	3.1%
SS Campus	\$2,598,098	33.2%
SS Capitol	\$1,237,060	15.8%
Total	\$7,819,194	100.0%

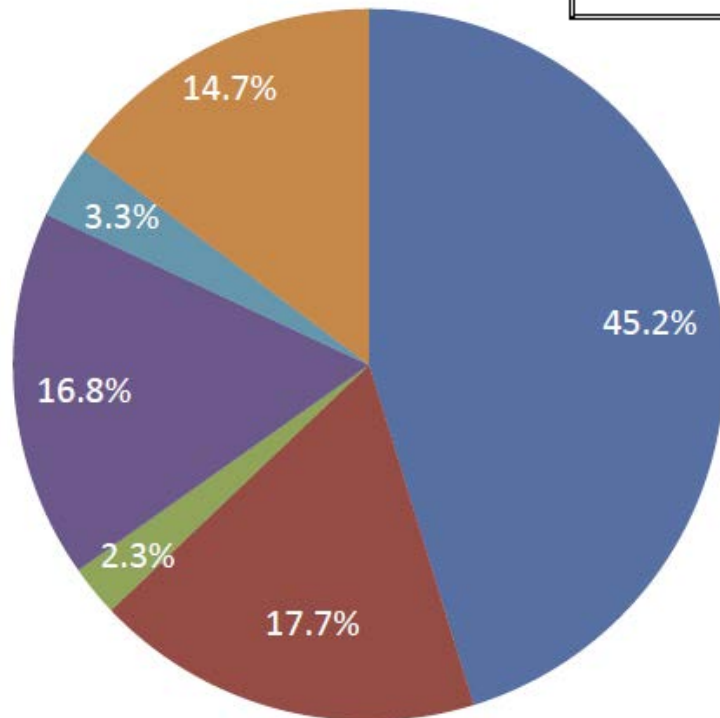


- Brayton Lot
- Capitol Square North
- Government East
- Overture Center
- S. Livingston Street
- State Street Campus
- State Street Capitol

2019 YTD September Expenses

2019 Operating Expenses vs Budget (YTD through September)

Expense Type	Actuals	2019 Budget	Remaining Budget	% of Budget Used
Salaries	\$3,144,576	\$5,295,397	\$1,837,945	63%
Benefits	\$1,227,681	\$1,737,772	\$569,770	68%
Supplies	\$160,939	\$429,715	\$269,311	37%
Services	\$1,164,356	\$3,180,435	\$1,731,693	40%
Inter Agency Charge	\$231,256	\$723,236	\$140,243	62%
PILOT & Meter Fee*	\$1,022,273	\$1,895,000	\$793,716	56%
Total:	\$6,951,081	\$12,293,759	\$5,342,678	57%



- Salaries
- Benefits
- Supplies
- Services
- Inter Agency Charge
- PILOT & Meter Fee

Category	Expenses	% of Expenses
Salaries	\$3,144,576	45.2%
Benefits	\$1,227,681	17.7%
Supplies	\$160,939	2.3%
Services	\$1,164,356	16.8%
Inter Agency Charge	\$231,256	3.3%
PILOT and Meter Fee	\$1,022,273	14.7%
Total	\$6,951,081	100.0%

Wilson Street Garage

- “Multiplicity” artwork
- Expanding mural on Wilson Street
- Garage opening in early 2020

