

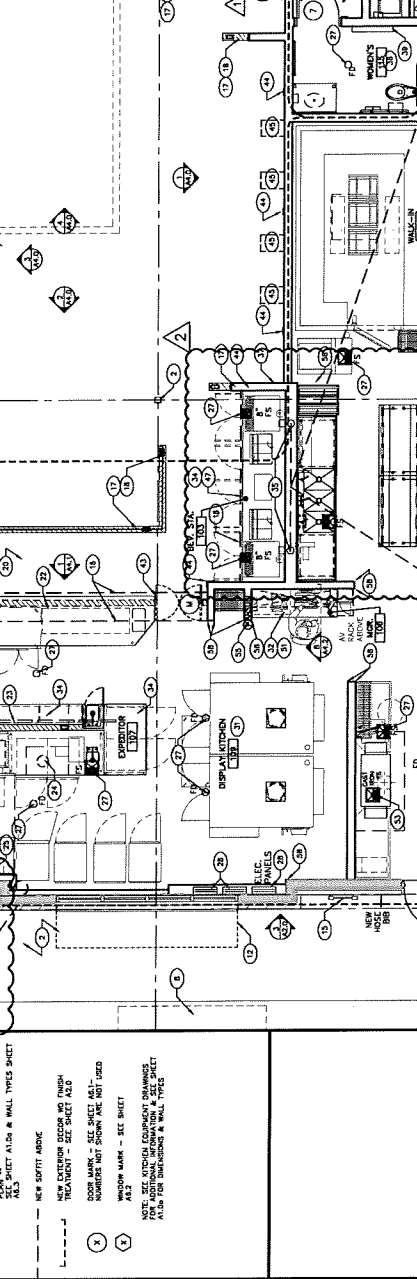
**FLOOR PLAN KEY NOTES:**

1. STRETCHER TYPICAL - SEE SHEETS A2.1
2. PAINT COL. - SEE ELEVATIONS & FINISH SCHEDULE ON SHEETS A1.0
3. CONCRETE PAVES OR MASONRY - SEE SHEET A1.1
4. HARD ALUM./GLASS DOOR, FRAME, AND/OR GLASS DOOR - SEE SHEET A1.1
5. HARD ALUM./GLASS DOOR, FRAME, AND/OR GLASS DOOR - SEE SHEET A1.1
6. HARD ALUM./GLASS DOOR - SEE SHEET A1.1
7. HARD ALUM./GLASS DOOR - SEE SHEET A1.1
8. HARD ALUM./GLASS DOOR - SEE SHEET A1.1
9. HARD ALUM./GLASS DOOR - SEE SHEET A1.1
10. HARD ALUM./GLASS DOOR - SEE SHEET A1.1
11. HARD ALUM./GLASS DOOR - SEE SHEET A1.1
12. HARD ALUM./GLASS DOOR - SEE SHEET A1.1
13. HARD ALUM./GLASS DOOR - SEE SHEET A1.1
14. HARD ALUM./GLASS DOOR - SEE SHEET A1.1
15. HARD ALUM./GLASS DOOR - SEE SHEET A1.1
16. HARD ALUM./GLASS DOOR - SEE SHEET A1.1
17. HARD ALUM./GLASS DOOR - SEE SHEET A1.1
18. HARD ALUM./GLASS DOOR - SEE SHEET A1.1
19. HARD ALUM./GLASS DOOR - SEE SHEET A1.1
20. HARD ALUM./GLASS DOOR - SEE SHEET A1.1
21. HARD ALUM./GLASS DOOR - SEE SHEET A1.1
22. HARD ALUM./GLASS DOOR - SEE SHEET A1.1
23. HARD ALUM./GLASS DOOR - SEE SHEET A1.1
24. HARD ALUM./GLASS DOOR - SEE SHEET A1.1
25. HARD ALUM./GLASS DOOR - SEE SHEET A1.1
26. HARD ALUM./GLASS DOOR - SEE SHEET A1.1
27. HARD ALUM./GLASS DOOR - SEE SHEET A1.1
28. HARD ALUM./GLASS DOOR - SEE SHEET A1.1
29. HARD ALUM./GLASS DOOR - SEE SHEET A1.1
30. HARD ALUM./GLASS DOOR - SEE SHEET A1.1
31. HARD ALUM./GLASS DOOR - SEE SHEET A1.1
32. HARD ALUM./GLASS DOOR - SEE SHEET A1.1
33. HARD ALUM./GLASS DOOR - SEE SHEET A1.1
34. HARD ALUM./GLASS DOOR - SEE SHEET A1.1
35. HARD ALUM./GLASS DOOR - SEE SHEET A1.1
36. HARD ALUM./GLASS DOOR - SEE SHEET A1.1
37. HARD ALUM./GLASS DOOR - SEE SHEET A1.1
38. HARD ALUM./GLASS DOOR - SEE SHEET A1.1
39. HARD ALUM./GLASS DOOR - SEE SHEET A1.1
40. HARD ALUM./GLASS DOOR - SEE SHEET A1.1
41. HARD ALUM./GLASS DOOR - SEE SHEET A1.1
42. HARD ALUM./GLASS DOOR - SEE SHEET A1.1
43. HARD ALUM./GLASS DOOR - SEE SHEET A1.1
44. HARD ALUM./GLASS DOOR - SEE SHEET A1.1
45. HARD ALUM./GLASS DOOR - SEE SHEET A1.1
46. HARD ALUM./GLASS DOOR - SEE SHEET A1.1
47. HARD ALUM./GLASS DOOR - SEE SHEET A1.1
48. HARD ALUM./GLASS DOOR - SEE SHEET A1.1
49. HARD ALUM./GLASS DOOR - SEE SHEET A1.1
50. HARD ALUM./GLASS DOOR - SEE SHEET A1.1
51. HARD ALUM./GLASS DOOR - SEE SHEET A1.1
52. HARD ALUM./GLASS DOOR - SEE SHEET A1.1
53. HARD ALUM./GLASS DOOR - SEE SHEET A1.1
54. HARD ALUM./GLASS DOOR - SEE SHEET A1.1
55. HARD ALUM./GLASS DOOR - SEE SHEET A1.1
56. HARD ALUM./GLASS DOOR - SEE SHEET A1.1
57. HARD ALUM./GLASS DOOR - SEE SHEET A1.1
58. HARD ALUM./GLASS DOOR - SEE SHEET A1.1
59. HARD ALUM./GLASS DOOR - SEE SHEET A1.1
60. HARD ALUM./GLASS DOOR - SEE SHEET A1.1
61. HARD ALUM./GLASS DOOR - SEE SHEET A1.1
62. HARD ALUM./GLASS DOOR - SEE SHEET A1.1
63. HARD ALUM./GLASS DOOR - SEE SHEET A1.1
64. HARD ALUM./GLASS DOOR - SEE SHEET A1.1
65. HARD ALUM./GLASS DOOR - SEE SHEET A1.1
66. HARD ALUM./GLASS DOOR - SEE SHEET A1.1
67. HARD ALUM./GLASS DOOR - SEE SHEET A1.1
68. HARD ALUM./GLASS DOOR - SEE SHEET A1.1
69. HARD ALUM./GLASS DOOR - SEE SHEET A1.1
70. HARD ALUM./GLASS DOOR - SEE SHEET A1.1
71. HARD ALUM./GLASS DOOR - SEE SHEET A1.1
72. HARD ALUM./GLASS DOOR - SEE SHEET A1.1
73. HARD ALUM./GLASS DOOR - SEE SHEET A1.1
74. HARD ALUM./GLASS DOOR - SEE SHEET A1.1
75. HARD ALUM./GLASS DOOR - SEE SHEET A1.1
76. HARD ALUM./GLASS DOOR - SEE SHEET A1.1
77. HARD ALUM./GLASS DOOR - SEE SHEET A1.1
78. HARD ALUM./GLASS DOOR - SEE SHEET A1.1
79. HARD ALUM./GLASS DOOR - SEE SHEET A1.1
80. HARD ALUM./GLASS DOOR - SEE SHEET A1.1

**GENERAL FLOOR PLAN NOTES:**

1. ALL DIMENSIONS ARE TO CENTERLINE UNLESS INDICATED OTHERWISE.
2. FACE OF WALL (UNLESS NOTED OTHERWISE) SHALL BE TO CENTERLINE UNLESS INDICATED OTHERWISE.
3. FINISH ELEVATIONS SHALL BE TO FINISH FLOOR SURFACE UNLESS OTHERWISE NOTED.
4. ALL DIMENSIONS ARE TO CENTERLINE UNLESS INDICATED OTHERWISE.
5. ALL DIMENSIONS ARE TO CENTERLINE UNLESS INDICATED OTHERWISE.
6. ALL DIMENSIONS ARE TO CENTERLINE UNLESS INDICATED OTHERWISE.
7. ALL DIMENSIONS ARE TO CENTERLINE UNLESS INDICATED OTHERWISE.
8. ALL DIMENSIONS ARE TO CENTERLINE UNLESS INDICATED OTHERWISE.
9. ALL DIMENSIONS ARE TO CENTERLINE UNLESS INDICATED OTHERWISE.
10. ALL DIMENSIONS ARE TO CENTERLINE UNLESS INDICATED OTHERWISE.
11. ALL DIMENSIONS ARE TO CENTERLINE UNLESS INDICATED OTHERWISE.
12. ALL DIMENSIONS ARE TO CENTERLINE UNLESS INDICATED OTHERWISE.
13. ALL DIMENSIONS ARE TO CENTERLINE UNLESS INDICATED OTHERWISE.
14. ALL DIMENSIONS ARE TO CENTERLINE UNLESS INDICATED OTHERWISE.
15. ALL DIMENSIONS ARE TO CENTERLINE UNLESS INDICATED OTHERWISE.
16. ALL DIMENSIONS ARE TO CENTERLINE UNLESS INDICATED OTHERWISE.
17. ALL DIMENSIONS ARE TO CENTERLINE UNLESS INDICATED OTHERWISE.
18. ALL DIMENSIONS ARE TO CENTERLINE UNLESS INDICATED OTHERWISE.
19. ALL DIMENSIONS ARE TO CENTERLINE UNLESS INDICATED OTHERWISE.
20. ALL DIMENSIONS ARE TO CENTERLINE UNLESS INDICATED OTHERWISE.
21. ALL DIMENSIONS ARE TO CENTERLINE UNLESS INDICATED OTHERWISE.
22. ALL DIMENSIONS ARE TO CENTERLINE UNLESS INDICATED OTHERWISE.
23. ALL DIMENSIONS ARE TO CENTERLINE UNLESS INDICATED OTHERWISE.
24. ALL DIMENSIONS ARE TO CENTERLINE UNLESS INDICATED OTHERWISE.
25. ALL DIMENSIONS ARE TO CENTERLINE UNLESS INDICATED OTHERWISE.
26. ALL DIMENSIONS ARE TO CENTERLINE UNLESS INDICATED OTHERWISE.
27. ALL DIMENSIONS ARE TO CENTERLINE UNLESS INDICATED OTHERWISE.
28. ALL DIMENSIONS ARE TO CENTERLINE UNLESS INDICATED OTHERWISE.
29. ALL DIMENSIONS ARE TO CENTERLINE UNLESS INDICATED OTHERWISE.
30. ALL DIMENSIONS ARE TO CENTERLINE UNLESS INDICATED OTHERWISE.
31. ALL DIMENSIONS ARE TO CENTERLINE UNLESS INDICATED OTHERWISE.
32. ALL DIMENSIONS ARE TO CENTERLINE UNLESS INDICATED OTHERWISE.
33. ALL DIMENSIONS ARE TO CENTERLINE UNLESS INDICATED OTHERWISE.
34. ALL DIMENSIONS ARE TO CENTERLINE UNLESS INDICATED OTHERWISE.
35. ALL DIMENSIONS ARE TO CENTERLINE UNLESS INDICATED OTHERWISE.
36. ALL DIMENSIONS ARE TO CENTERLINE UNLESS INDICATED OTHERWISE.
37. ALL DIMENSIONS ARE TO CENTERLINE UNLESS INDICATED OTHERWISE.
38. ALL DIMENSIONS ARE TO CENTERLINE UNLESS INDICATED OTHERWISE.
39. ALL DIMENSIONS ARE TO CENTERLINE UNLESS INDICATED OTHERWISE.
40. ALL DIMENSIONS ARE TO CENTERLINE UNLESS INDICATED OTHERWISE.
41. ALL DIMENSIONS ARE TO CENTERLINE UNLESS INDICATED OTHERWISE.
42. ALL DIMENSIONS ARE TO CENTERLINE UNLESS INDICATED OTHERWISE.
43. ALL DIMENSIONS ARE TO CENTERLINE UNLESS INDICATED OTHERWISE.
44. ALL DIMENSIONS ARE TO CENTERLINE UNLESS INDICATED OTHERWISE.
45. ALL DIMENSIONS ARE TO CENTERLINE UNLESS INDICATED OTHERWISE.
46. ALL DIMENSIONS ARE TO CENTERLINE UNLESS INDICATED OTHERWISE.
47. ALL DIMENSIONS ARE TO CENTERLINE UNLESS INDICATED OTHERWISE.
48. ALL DIMENSIONS ARE TO CENTERLINE UNLESS INDICATED OTHERWISE.
49. ALL DIMENSIONS ARE TO CENTERLINE UNLESS INDICATED OTHERWISE.
50. ALL DIMENSIONS ARE TO CENTERLINE UNLESS INDICATED OTHERWISE.
51. ALL DIMENSIONS ARE TO CENTERLINE UNLESS INDICATED OTHERWISE.
52. ALL DIMENSIONS ARE TO CENTERLINE UNLESS INDICATED OTHERWISE.
53. ALL DIMENSIONS ARE TO CENTERLINE UNLESS INDICATED OTHERWISE.
54. ALL DIMENSIONS ARE TO CENTERLINE UNLESS INDICATED OTHERWISE.
55. ALL DIMENSIONS ARE TO CENTERLINE UNLESS INDICATED OTHERWISE.
56. ALL DIMENSIONS ARE TO CENTERLINE UNLESS INDICATED OTHERWISE.
57. ALL DIMENSIONS ARE TO CENTERLINE UNLESS INDICATED OTHERWISE.
58. ALL DIMENSIONS ARE TO CENTERLINE UNLESS INDICATED OTHERWISE.
59. ALL DIMENSIONS ARE TO CENTERLINE UNLESS INDICATED OTHERWISE.
60. ALL DIMENSIONS ARE TO CENTERLINE UNLESS INDICATED OTHERWISE.

**LEGEND:**



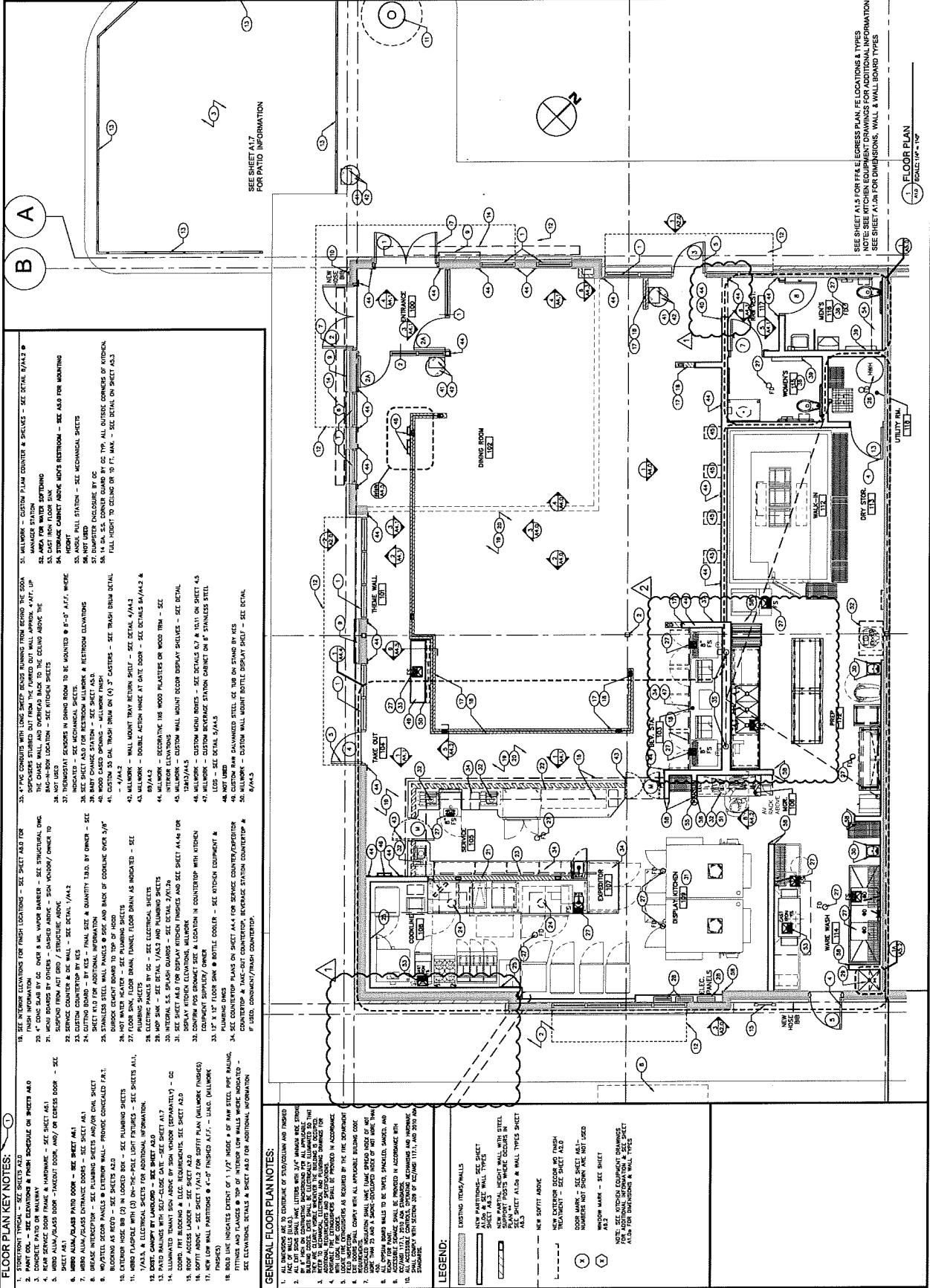
SEE SHEET A1.1 FOR FLOOR FINISH, ELEVATIONS, TYPES & LOCATIONS OF WALL & WALL BOARD TYPES  
SEE SHEET A1.0 FOR DIMENSIONS, WALL & WALL BOARD TYPES

ALAN HARR ARCHITECTS P.C.  
1000 KENNEDY AVENUE - GEORGETOWN, MICHIGAN 49435

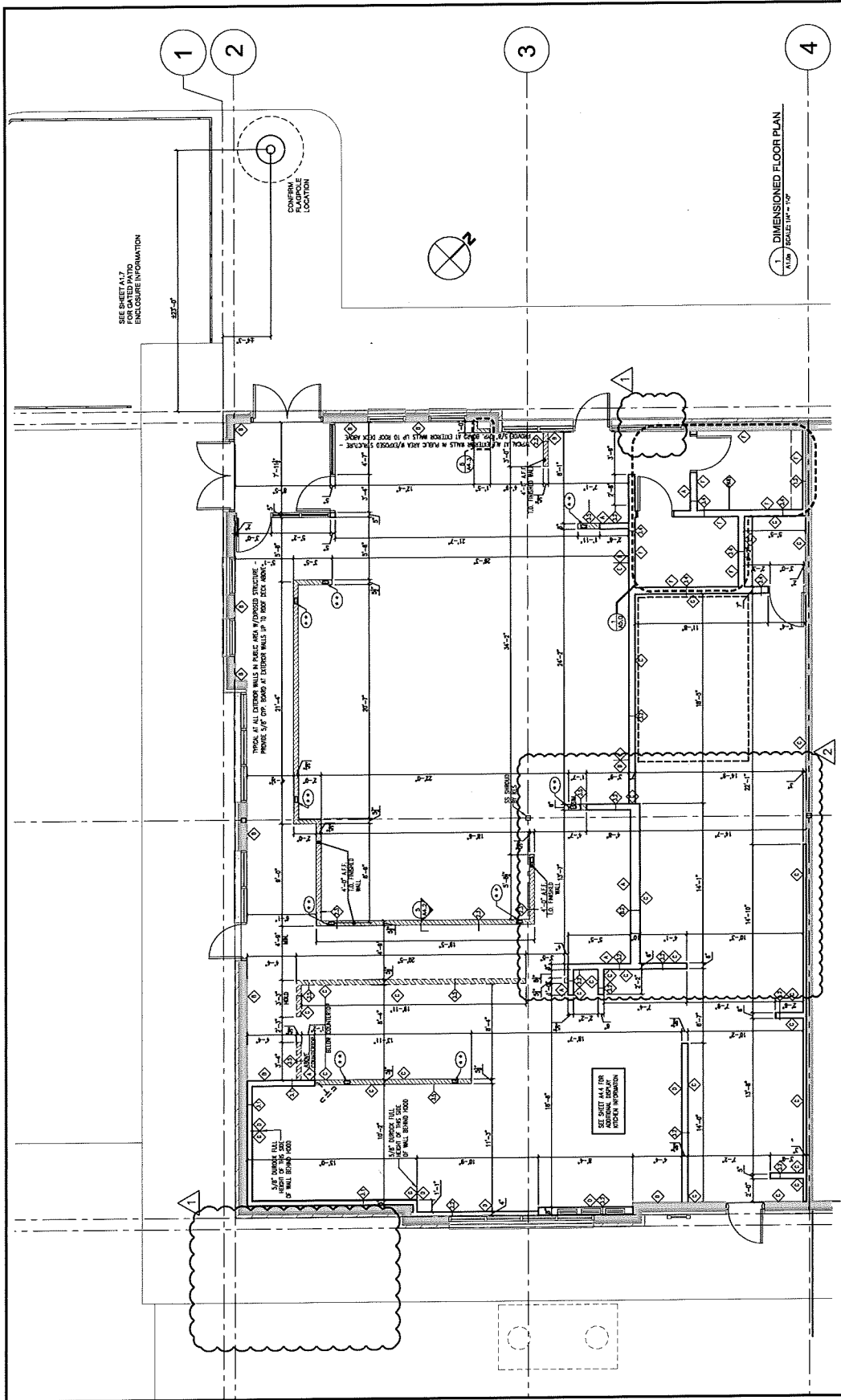
FLOOR PLAN  
MISSION BBQ MADISON EAST  
4702 EAST TOWNE BOULEVARD  
MADISON, WI 53704

MISSION BBQ  
DATE: PROJECT: MIBB  
DRAWN BY: J.P. STANLEY  
CHECKED BY: J.P. STANLEY  
DESIGNED BY: J.P. STANLEY  
SCALE: 1/8" = 1'-0"

A1.0



FLOOR PLAN  
SCALE: 1/8" = 1'-0"



LEGEND:		INSULATION NOTES:	
	EXISTING PARTY WALLS		WINDOW MARK - SEE SHEET A8.3
	NEW PARTITION WALL, SEE SHEET A8.3		NEW EXTERIOR WALL, INDICATOR - SEE SHEET A8.3
	NEW EXTERIOR WALL		NEW EXTERIOR WALL WITH INSULATION, INDICATOR - SEE SHEET A8.3

ALL WALL CAVITIES ARE ASSUMED TO CONTAIN SAT INSULATION PROVIDED BY THE MANUFACTURER. INSULATION SHALL BE TYPE R-13 FIBERGLASS BATT INSULATION WITH A FIRE-RATED VAPOR BARRIER AT INSULATION THAT IS NOT IN DIRECT CONTACT WITH WALL BOARD OR CEILING BOARD.

**NOTES:**  
 1. SEE SHEET A1.8 FOR FLOOR PLAN NOTES & ADDITIONAL INFORMATION.  
 2. SEE SHEET A1.7 FOR GATED PATIO ENCLOSURE INFORMATION.  
 3. SEE SHEET A8.3 FOR WALL & WALL BOARD TYPES.

**Mission BBQ East Madison, LLC**  
**Business Plan**  
**February 15, 2020**

Mission BBQ East Madison, LLC will operate a BBQ Restaurant that intends to offer fermented malt beverages to those dining at the restaurant.

This restaurant will follow the same business model as Mission BBQ's 93 other restaurants across 16 states.

Mission BBQ is a fast casual format, with a unit average of \$3 M per year, with a 55/45 split between lunch and dinner. The restaurant will serve beer which is expected to account for under 3% of sales.

On average we employ approximately 45 teammates per location.

Mission BBQ commits to the communities in which it operates restaurants, to gain loyalty and support the local community.

Food is prepared in a scratch kitchen that has no freezers or microwaves. Our meats are dry rubbed and oak smoked throughout the day and night.

Mission BBQ approaches everything we do with a humble Servant Heart- putting the needs of others above our own to MAKE IT MATTER. Our MISSION is to serve those that Serve/Served.



**A**fter traveling our great country to the best BBQ places in America, we felt inspired to bring this great food home. To your home! Or your workplace. Or, heck, wherever you're having fun with friends and family.

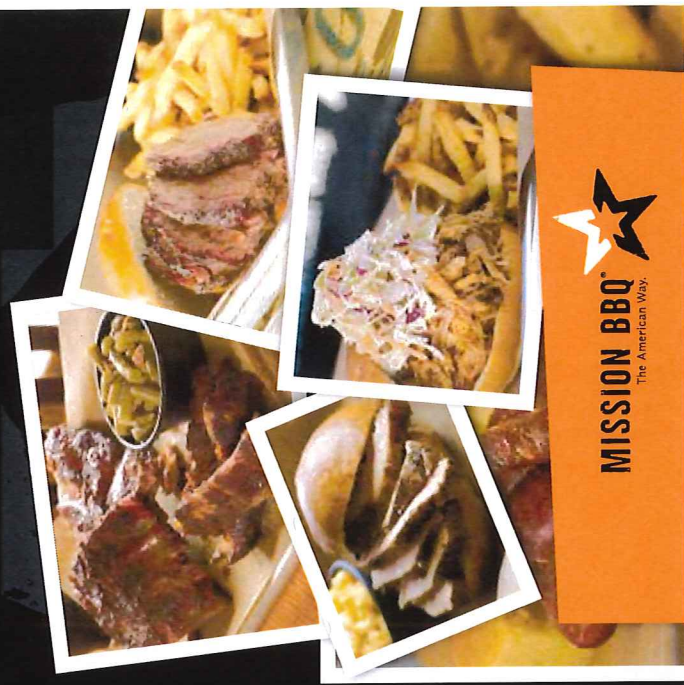
We love it when you're here, but will gladly help you enjoy our mouthwatering fare anywhere. So take a look at our Take-Out, pull up and say hi, then drive away happy. Just try not to eat it all on the way back. (And grab some extra napkins before you go.)

We can even have it ready for you if you call ahead. Our Pick Up Packs serve as many as you like—5 to 5,000 people. Or one reallilly hungry guy with sauce on his shirt.

See ya soon!

**Homemade. Hand Crafted.  
No Microwaves—No Freezers.  
No Shortcuts.**

# TAKEOUT



01/2016

[WWW.MISSION-BBQ.COM](http://WWW.MISSION-BBQ.COM)

# TAKEOUT

## ★ MEAT MARKET

BRISKET .....	\$ 8.79
Texas Inspired, Oak Smoked	
PULLED PORK .....	\$ 7.29
Slow Smoked, Hand Pulled	
TURKEY .....	\$ 7.49
Sliced, Lean & Mean	
PULLED CHICKEN .....	\$ 6.99
Fresh Chicken, Moist & Flavorful	
CHICKEN .....	\$ 8.49
Half a Yard Bird, Winner-Winner...	
SAUSAGE .....	\$ 5.99
Jalapeno & Chz or Classic #41	
MARKET SAMPLER .....	\$ 8.99/13.49
2 MEAT / 3 MEAT	
BLACK PLATE SPECIAL .....	Market Price

## ★ RACKS

BY THE BONE / 5 BONE / 10 BONE	
BAY-BACK RIBS .....	\$ 2.39/10.99/18.99
Fall off the Bone, Tender	
SPARE RIBS .....	\$ 2.19/9.99/17.99
St. Louis Style	

## ★ SANDWICHES

BRISKET .....	\$ 8.29
Sliced to Order	
CHOPPED BRISKET .....	\$ 7.99
Marinated in Memphis Belle	
PULLED PORK .....	\$ 6.79
Traditional or NC Style	
TURKEY .....	\$ 6.99
Damn Good	
PULLED CHICKEN .....	\$ 6.49
Tasty & Tender, Piled High	

## ★ MAKE IT A COMBO

For Meat Market, Racks & Sandwiches	
XL COMBO .....	ADD \$ 3.00
Add one side & drink	
XXL COMBO .....	ADD \$ 4.00
Add two sides & drink	

## ★ SALADS

ENTREE / SIDE	
GARDEN GREENS .....	\$ 4.99/2.19
Crispy Iceberg, Romaine & Fresh Veggies	
PLUS MEAT .....	ADD \$ 3.00
Chicken, Turkey, Pork	

## ★ SIDES

Made from scratch			
	SERVING	PINT	QUART
MAGGIE'S .....	\$2.09	\$6.99	\$9.99
MAC-N-CHEESE			
BAKED BEANS .....	\$2.04	\$5.99	\$8.99
w/ BRISKET			
GREEN BEANS .....	\$1.99	\$5.49	\$8.49
& BACON			
COLD SLAW .....	\$1.89	\$3.99	\$6.99
FRESH CUT FRIES .....	\$1.99		
SEASONAL SIDES & SWEETS .....			YES

## ★ KIDS MENU

Comes with Kid's Cup & one side

JR RIBS .....	\$ 5.99
Just like Dad's	
SLIDER .....	\$ 4.99
Chicken, Pork, Turkey: Kid Sized	
KID MAC .....	\$ 3.99
A Kid's Classic, Done the MISSION Way	

## ★ DRINKS

ICED COLD BOTTLED SODA .....	\$ 2.59 EA
American Classics	
FOUNTAIN SODA .....	\$ 1.99
One Size—Free Refills	
KETTLE BREWED ICED TEA .....	\$ 1.99
Handmade, Sweet and Unsweetened	
SUMMERTIME LEMONADE .....	\$ 1.99

## ★ AMERICAN HEROES CUP

REFILLS .....	\$ .99
---------------	--------

Purchase one of these special cups, sized to handle any thirst, and it's yours to keep. \$2 will be donated to support the meaningful work of local non-profit organizations in your community.

## ★ PICK UP PACKS

Let us know ahead of time what you're craving and we'll deliver it right to you!

For parties of 10 or more, only \$11.99 per person + tax

### 1) Choose up to 3:

- Sliced Brisket
- Chopped Brisket
- Pulled Pork
- Turkey
- Pulled Chicken
- Sausage

### 2) Choose up to 3 sides:

- Maggie's Mac-N-Cheese
- Baked Beans w/ Brisket
- Green Beans & Bacon
- Cold Slaw
- Seasonal Side

### 3) Choose from the Bakery:

- Slider Rolls
- Buns
- Cornbread
- Sliders/Cornbread Combo

### 4) Choose your sauces:

- Memphis Belle
- Smoky Mountain
- Texas Twang
- KC Classic
- Alabama White
- Bay-B-Que
- Tupelo Honey Heat
- Carolina Vinegar
- Georgia Mustard
- Craftsman Special

Let us know if you need us to throw in any plates, cutlery, serving utensils...or even a tablecloth. Just try not to eat it all on the way back.

10 PEOPLE: 4 lbs of Smoked Meat, 3 qts of sides, bakery & homemade BBQ sauces

20 PEOPLE: 8 lbs of Smoked Meat, 6 qts of sides, bakery & homemade BBQ sauces

30 PEOPLE: 12 lbs of Smoked Meat, 9 qts of sides, bakery & homemade BBQ sauces

40 PEOPLE: 16 lbs of Smoked Meat, 12 qts of sides, bakery & homemade BBQ sauces

50-5,000 PEOPLE..... YOU BET!



# MISSION BBQ

The American Way.

www.MISSION-BBQ.com

**Mission BBQ East Madison, WI, LLC**  
**Written Description of Premises**  
**February 17, 2020**

Premises is a BBQ Restaurant occupying a 3,600 square foot space located at 4702 East Towne Blvd., Madison, WI 53704. Premises is located within a new construction, multi-tenant project. Premises was not previously licensed for sale of alcohol beverages.

Estimated capacity for the premises is 102 patrons and employees indoor, and zero capacity outdoor.

Legal description of the premises, site plans, floor plans, and parking depiction are included in the lease and with this application.

21884369.1

# Exhibit- Parking Depiction

