

JOINT CAMPUS AREA COMMITTEE 12/11/19 - INFORMATIONAL



Gymnasium/ Natatorium Replacement
University of Wisconsin, Madison

DFDM PROJECT NO. 18H3E
KS PROJECT NO. 219055.00
HOK PROJECT NO. 19.70033.00



GYMNASIUM/NATATORIUM REPLACEMENT PROJECT

PROJECT DESCRIPTION & SCOPE:

- Replaces existing Gym / Nat with **new 262,108 GSF** Recreation & Wellness Facility
- Incorporate 7,700 GSF Kinesiology Phase 1, adaptive fitness.
- Plan for 88,000 GSF Kinesiology Phase 2 expansion.
- Allows for **program growth** with increased access, visibility, and utilization
- Helps meet **critical space needs** for an increased campus enrollment
- Designed to **promote natural lighting** and views to the outdoors
- Includes new and enhanced activity program spaces and **new revenue sources**
- Creates a **new ice sheet** for recreation and community outreach
- Enables future renovations at the Camp Randall Memorial Sports Center

PROJECT BUDGET:

Budget (Hard + Soft Cost):

\$108M Rec + \$3M Kinesiology + \$2.2M Wellness = \$113.2M

APPROVAL SCHEDULE:

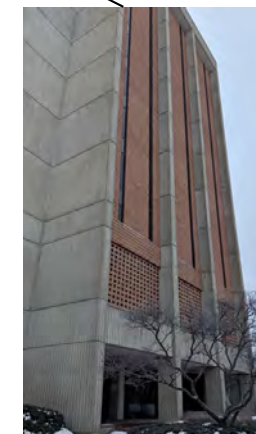
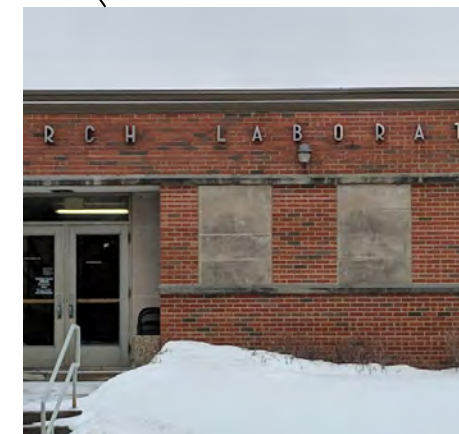
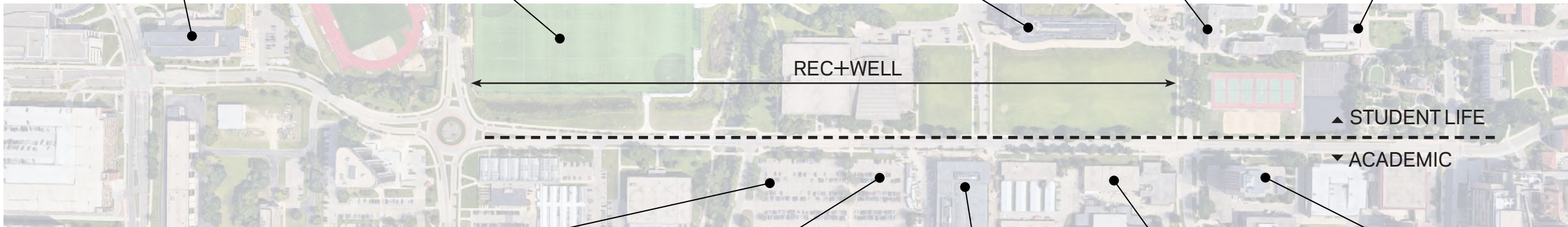
Design Review Board #1	October 15, 2019
Notify Alder	October 29, 2019
Developer Assistance Team	December 5, 2019
Joint Campus Area Committee	December 11, 2019
Design Review Board #2	February 18, 2020
Submit Demolition Plans	February 2020
Joint Campus Area Committee	March 30, 2020
35% Submittal	April 2020
Design Review Board #3	April 21, 2020
Board of Regents	June 2020
City Agency Review	August 2020
Bid	December 2020
Start Construction	February 2021
Substantial Completion	December 2022



SITE REGIONAL ACCESS



-  VEHICLE ACCESS
-  BUS ROUTE #80
-  BUS ROUTE #81
-  BUS ROUTE #84
-  MADISON B-CYCLE
-  PUBLIC PARKING



Joint Campus Area Committee
December 11, 2019

DFDM PROJECT NO. 18H3E
KS PROJECT NO. 219055.00
HOK PROJECT NO. 19.70033.00

Kahler Slater +

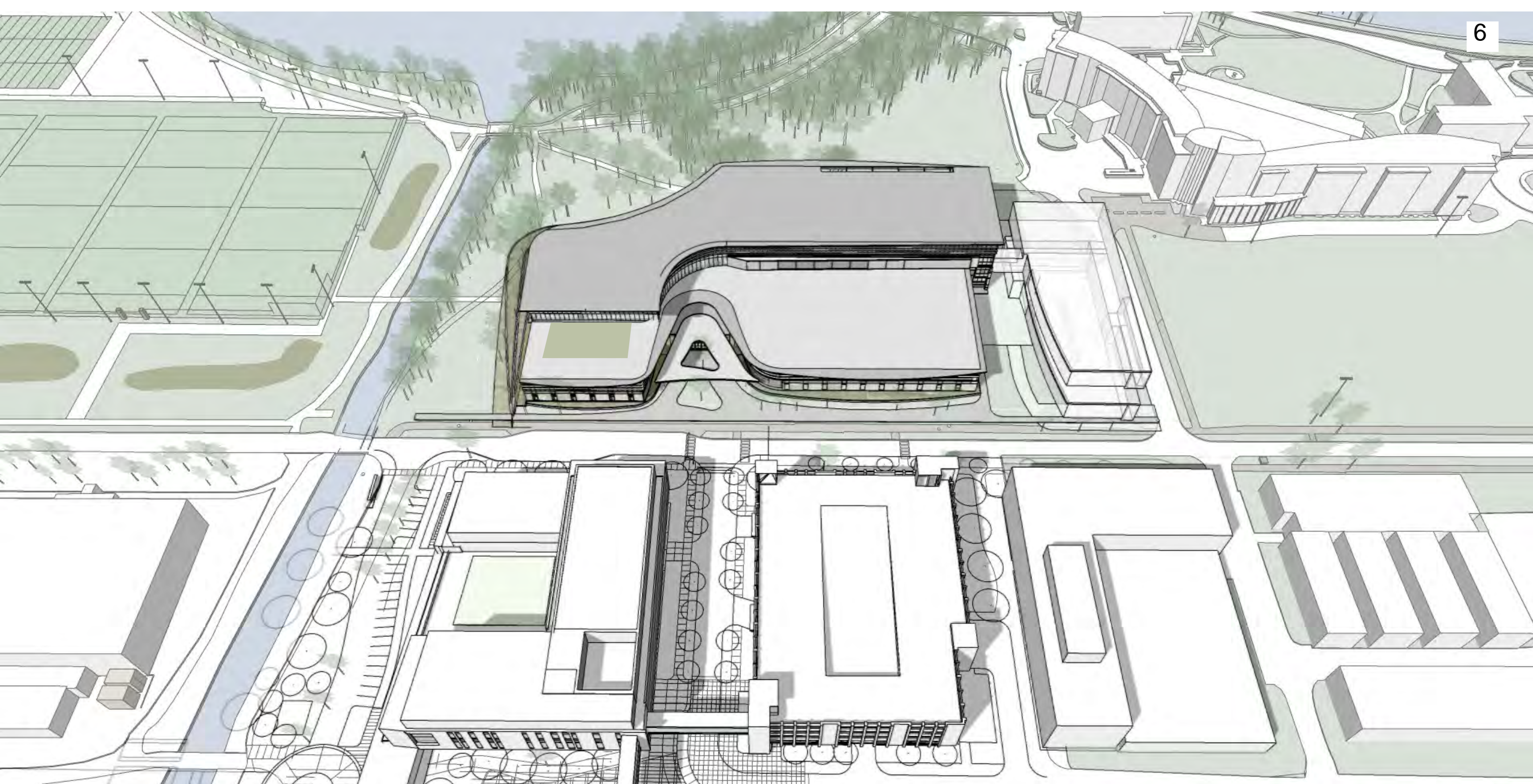


Joint Campus Area Committee
December 11, 2019

SITE PLAN

DFDM PROJECT NO. 18H3E
KS PROJECT NO. 219055.00
HOK PROJECT NO. 19.70033.00

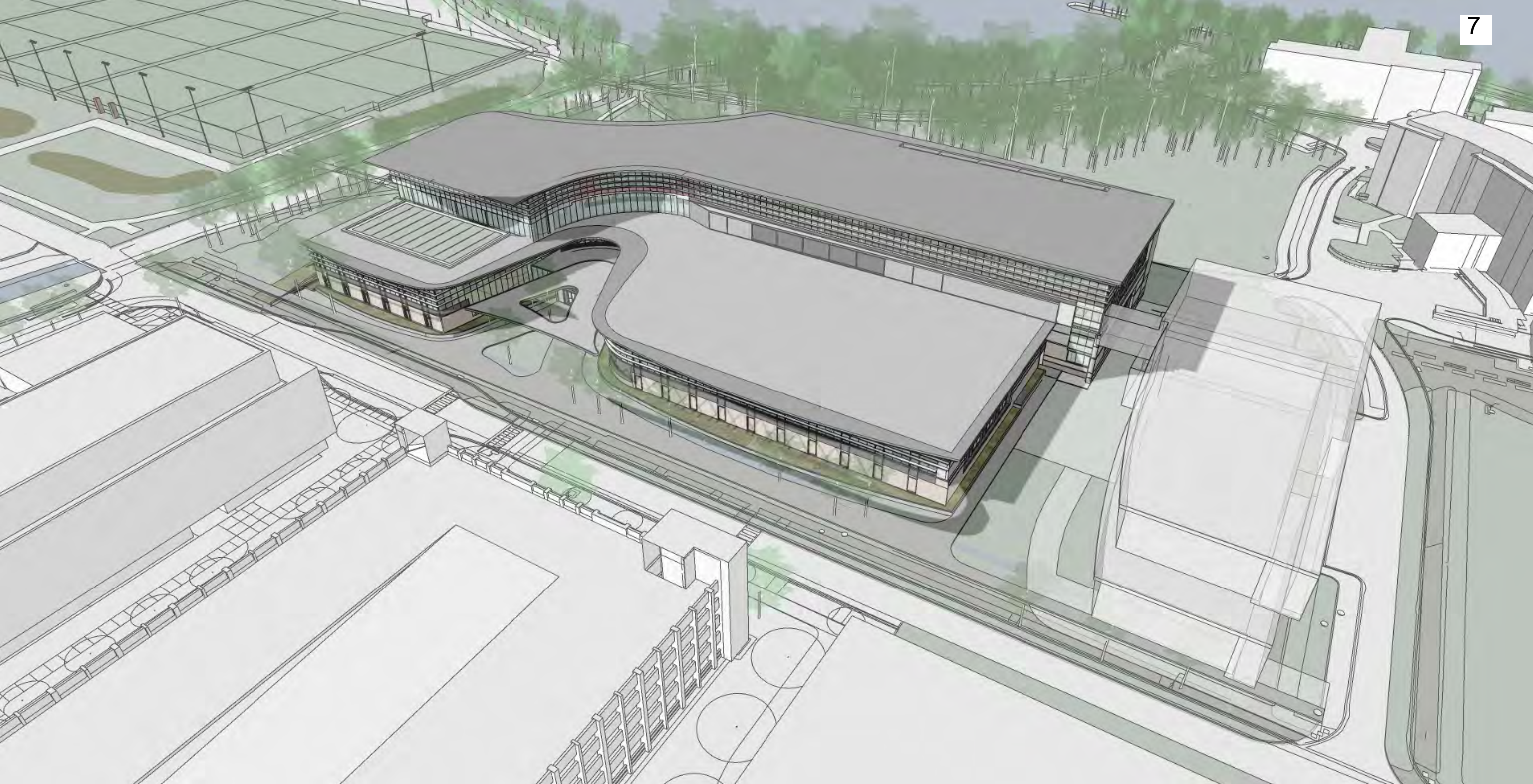




Joint Campus Area Committee
December 11, 2019

DFDM PROJECT NO. 18H3E
KS PROJECT NO. 219055.00
HOK PROJECT NO. 19.70033.00





Joint Campus Area Committee
December 11, 2019

DFDM PROJECT NO. 18H3E
KS PROJECT NO. 219055.00
HOK PROJECT NO. 19.70033.00

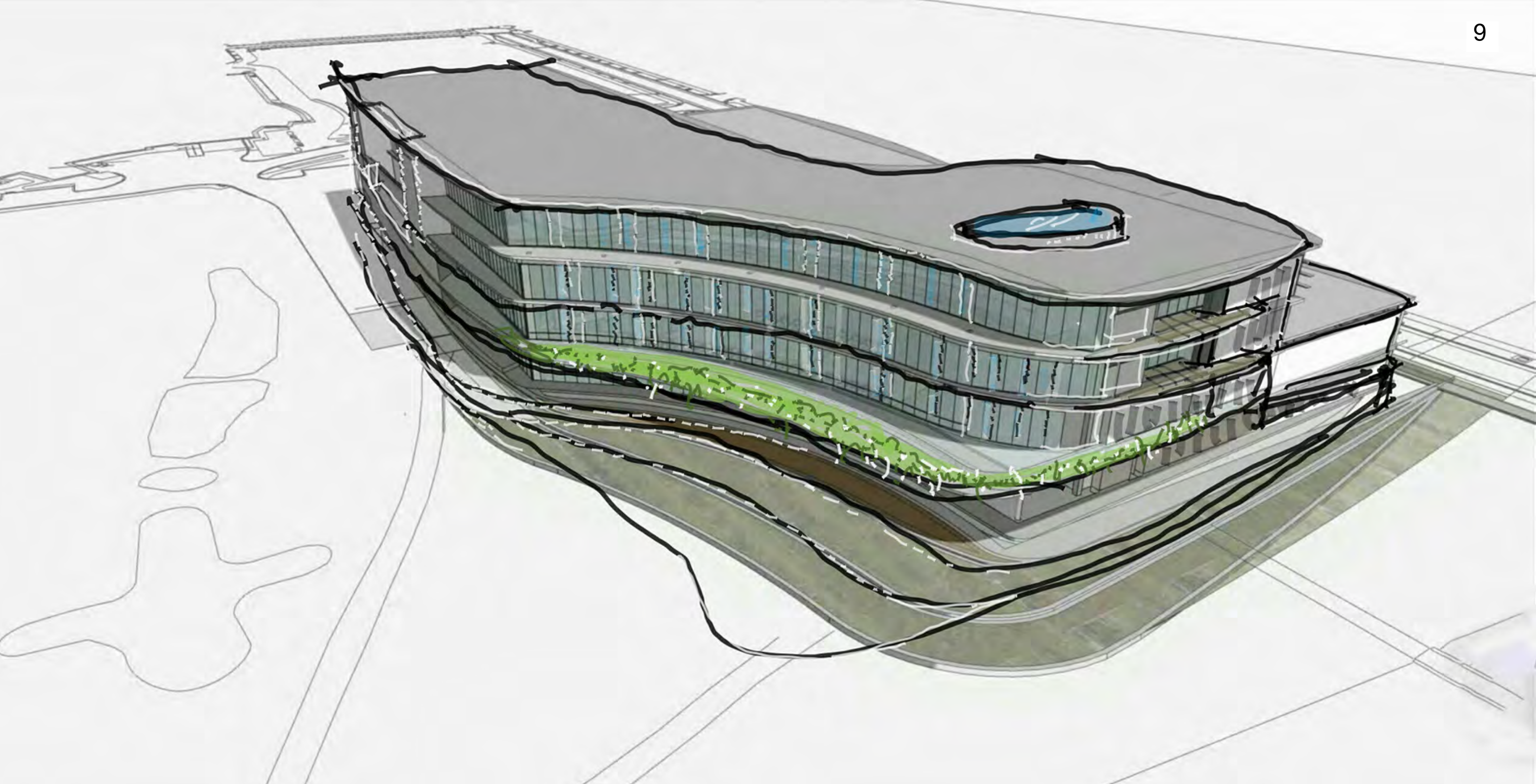




Joint Campus Area Committee
December 11, 2019

DFDM PROJECT NO. 18H3E
KS PROJECT NO. 219055.00
HOK PROJECT NO. 19.70033.00

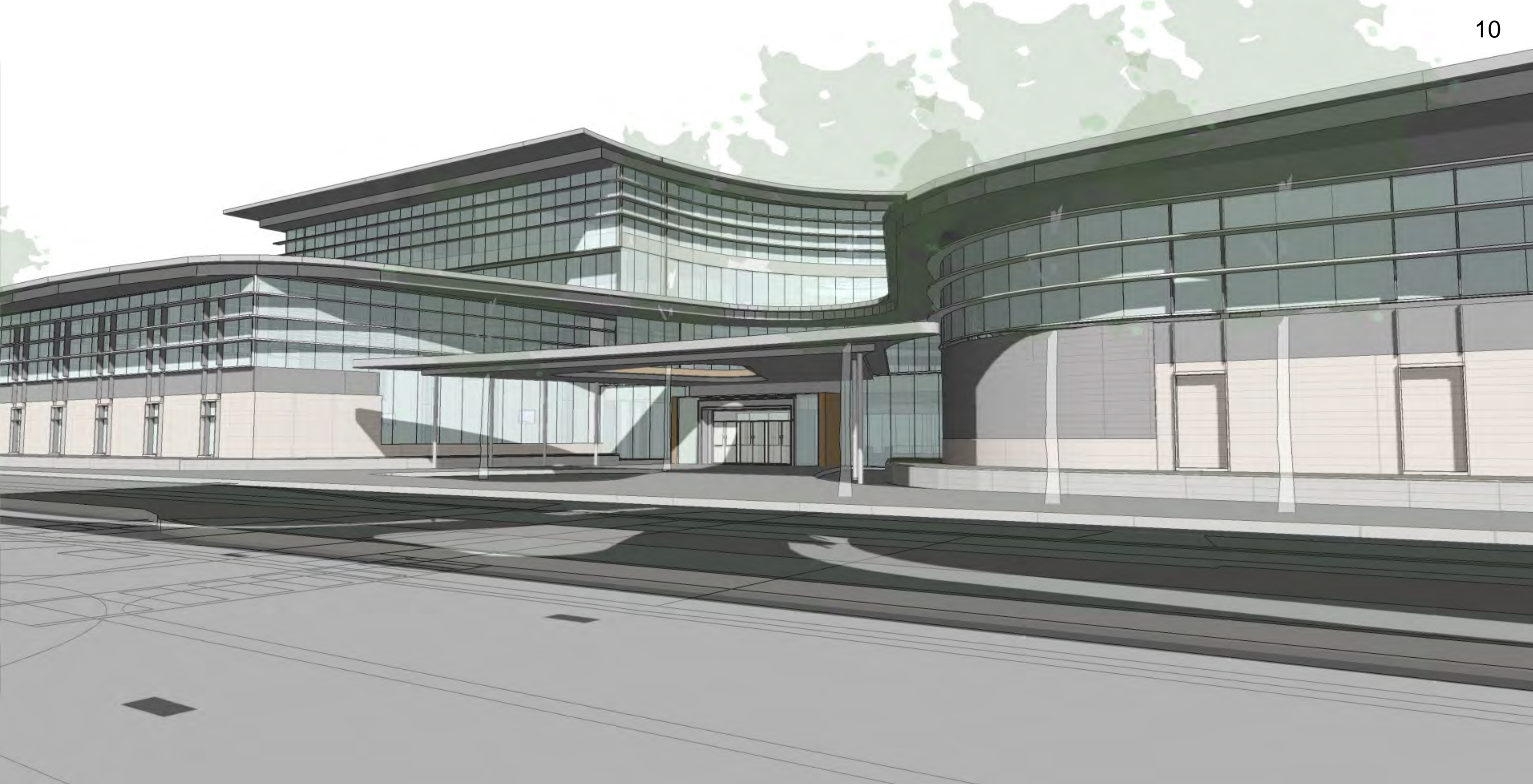




Joint Campus Area Committee
December 11, 2019

DFDM PROJECT NO. 18H3E
KS PROJECT NO. 219055.00
HOK PROJECT NO. 19.70033.00

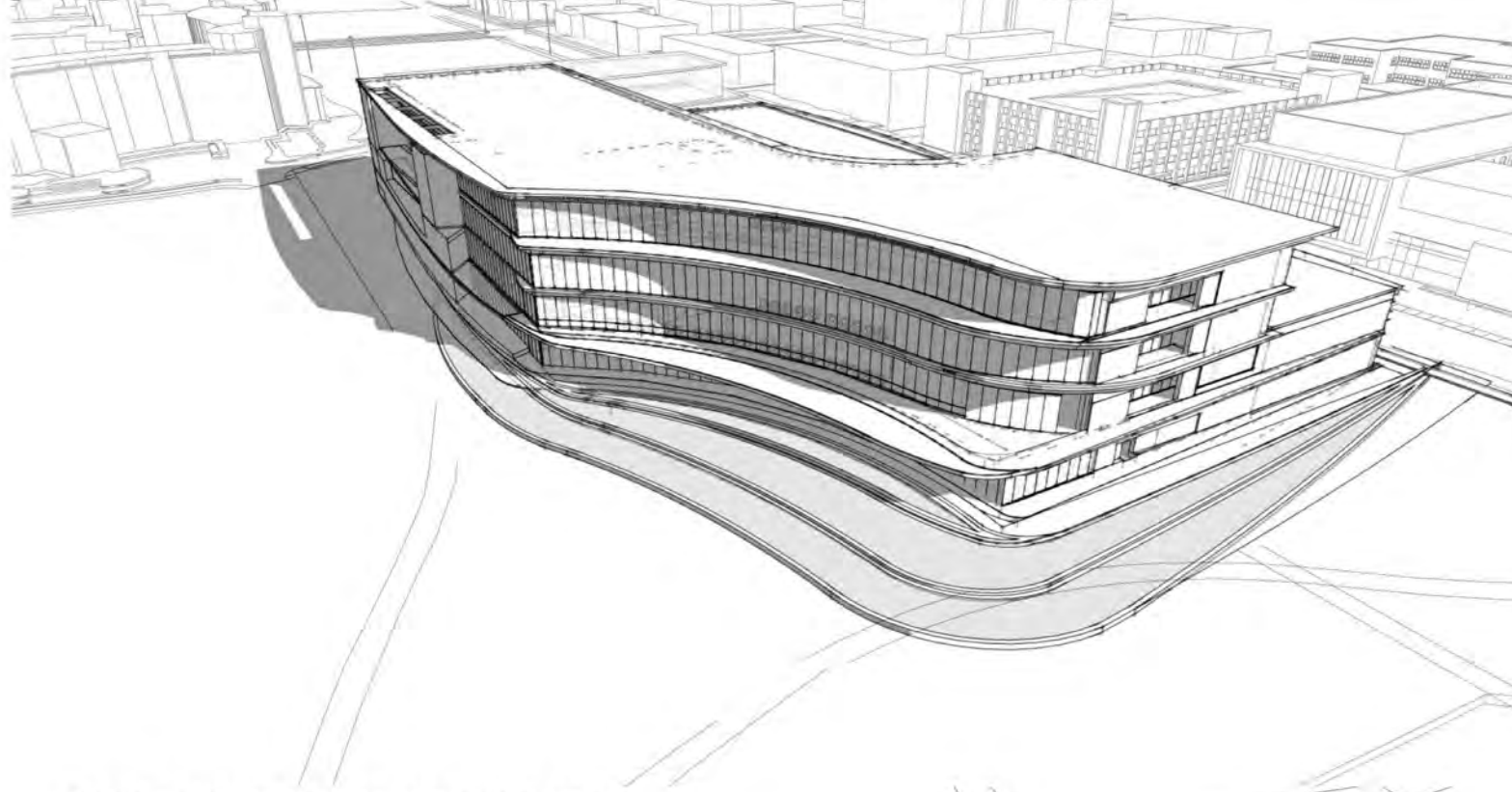




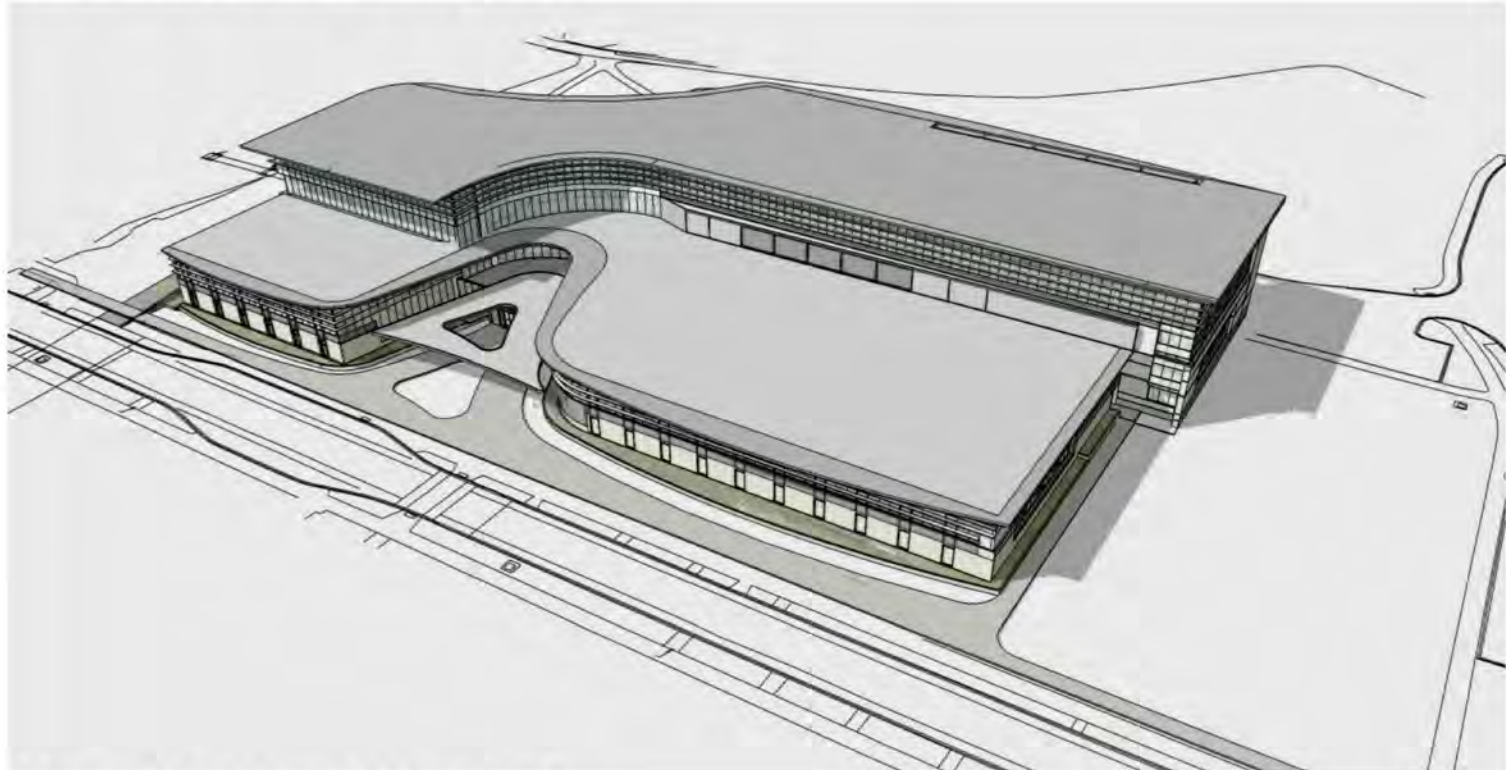
Joint Campus Area Committee
December 11, 2019

DFDM PROJECT NO. 18H3E
KS PROJECT NO. 219055.00
HOK PROJECT NO. 19.70033.00





NORTHWEST AERIAL PERSPECTIVE



SOUTHEAST AERIAL PERSPECTIVE



WEST PERSPECTIVE



EAST PERSPECTIVE



NORTH PERSPECTIVE



SOUTH PERSPECTIVE