







View of Proposed Location for the Club Car



View from West Washington



View towards West Mifflin



View from North Francies



Locomotive with Enclosed Canopy Behind



One of Three Typical Train Cars



View from the Platform Showing the 1903 & Mid-Century Canopies



The Club Car to be Relocated

Parking Data:

Auto Parking Required
 General Retail
 Ground 3,980 SF
 Platform 7,020
 Upper 1,470
 Total 12,470 SF @ 1/400 = 31 Min & @ 1/200 = 62 Max
 Office 3,200 SF @ 1/400 = 8 Min & @ 1/250 = 13 Max
 Coffee Shop 1,080 SF @ 1/15 SF = 72 Capacity
 @ 15% = 11 Min & @ 40% = 29 Max
 Restaurant 2,060 SF @ 1/15 SF = 137 Capacity
 @ 15% = 21 Min & @ 40% = 69 Max
 Total Parking Required 71 Min & 173 Max (63 Min with shared parking)

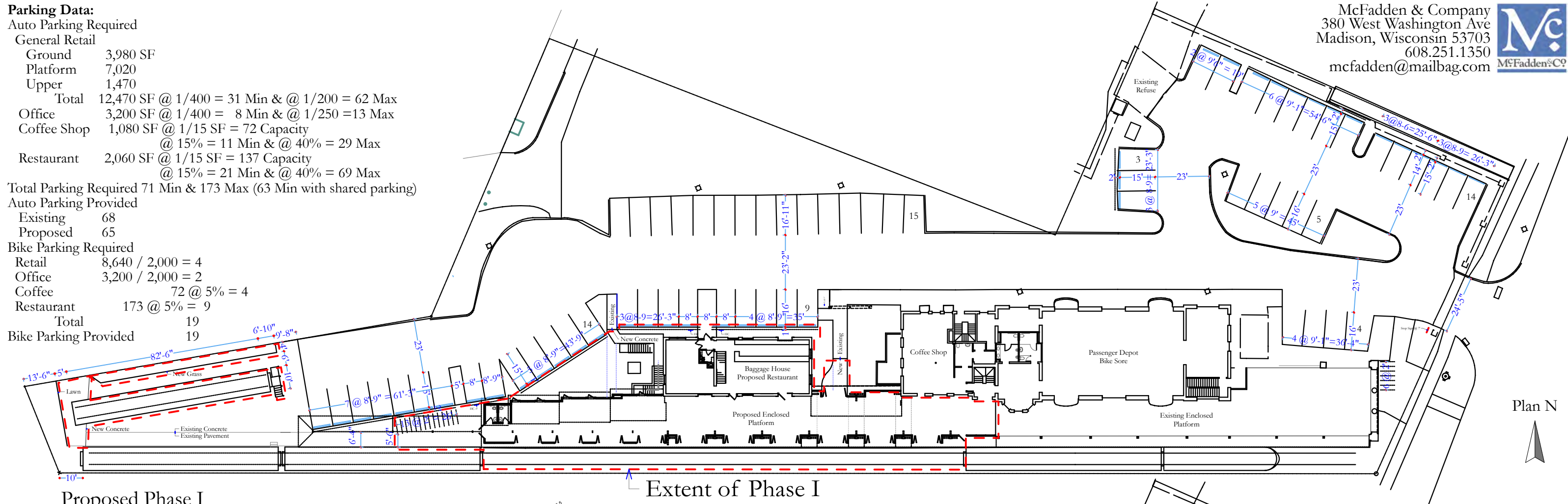
Auto Parking Provided

Existing 68
 Proposed 65

Bike Parking Required

Retail 8,640 / 2,000 = 4
 Office 3,200 / 2,000 = 2
 Coffee 72 @ 5% = 4
 Restaurant 173 @ 5% = 9
 Total 19

Bike Parking Provided 19



Proposed Phase I

Extent of Phase I

Site Data:

Site Area 72,686 SF
 Existing Impervious Surface
 Building 16,535 SF
 Pavement 30,555 SF
 Train 3,900 SF
 Walks 4,440 SF
 Total 55,390 SF

Proposed Impervious Surface

Building 17,175 SF
 Pavement 27,650 SF
 Train 3,900 SF
 Walks 6,160 SF
 Total 54,885 SF

Change in Impervious Surface

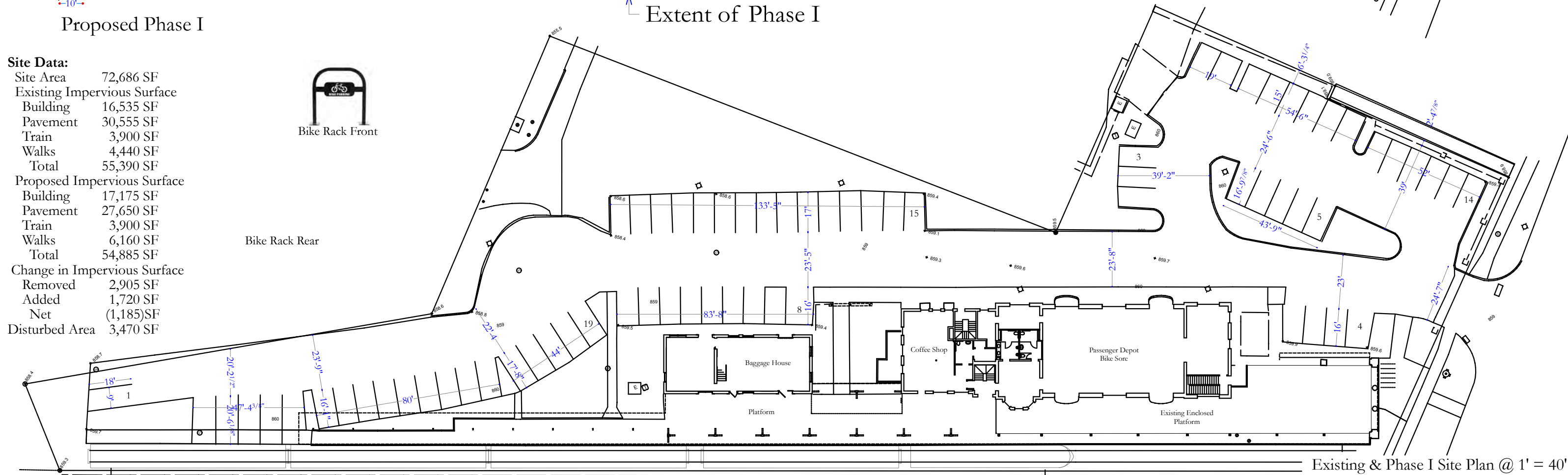
Removed 2,905 SF
 Added 1,720 SF
 Net (1,185)SF

Disturbed Area 3,470 SF



Bike Rack Front

Bike Rack Rear



Existing

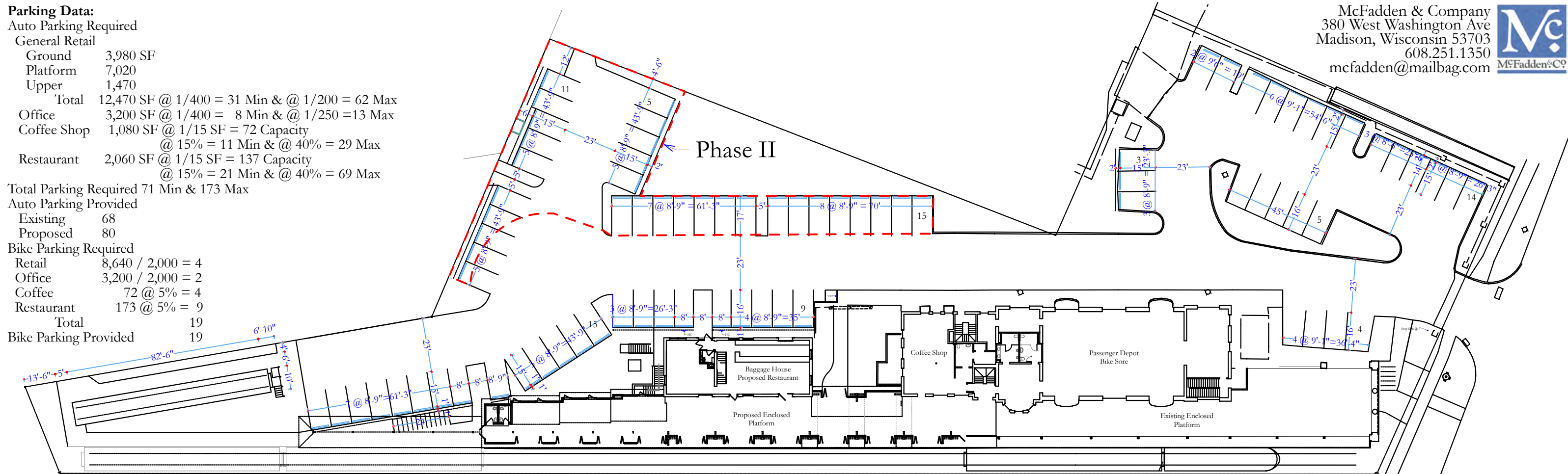
Existing & Phase I Site Plan @ 1' = 40'

Note: Work area included in Phase I outlined in red. No changes to other areas.

Parking Data:

Auto Parking Required	
General Retail	
Ground	3,980 SF
Platform	7,020
Upper	1,470
Total	12,470 SF @ 1/400 = 31 Min & @ 1/200 = 62 Max
Office	3,200 SF @ 1/400 = 8 Min & @ 1/250 = 13 Max
Coffee Shop	1,080 SF @ 1/15 SF = 72 Capacity
	@ 15% = 11 Min & @ 40% = 29 Max
Restaurant	2,060 SF @ 1/15 SF = 137 Capacity
	@ 15% = 21 Min & @ 40% = 69 Max
Total Parking Required 71 Min & 173 Max	

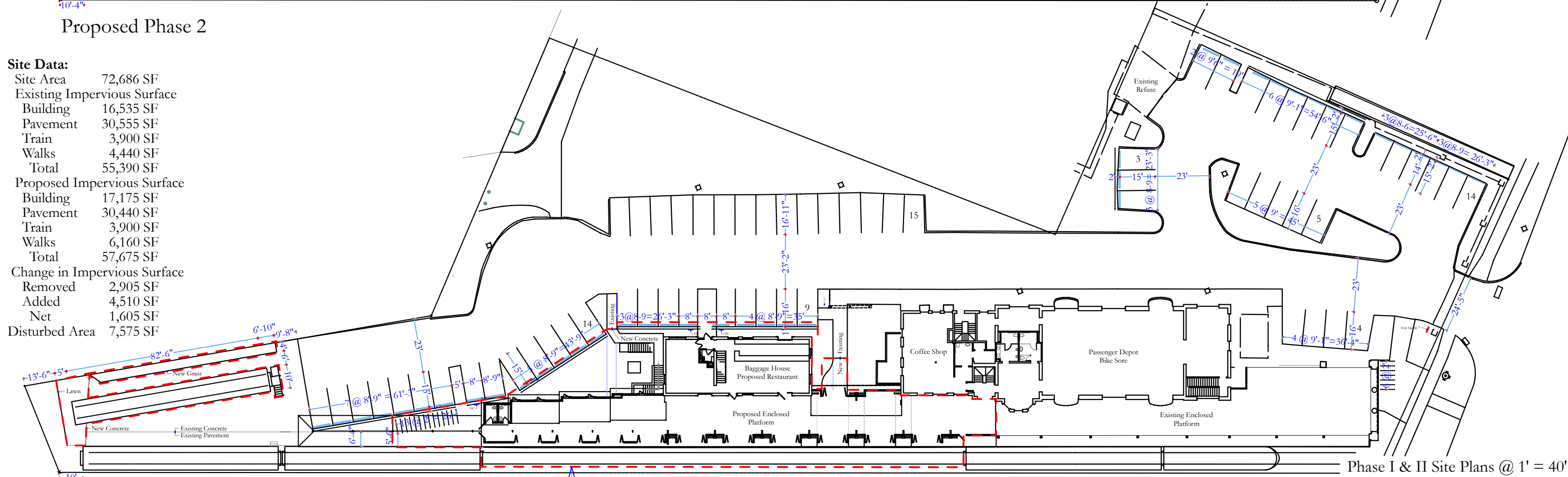
Auto Parking Provided	
Existing	68
Proposed	80
Bike Parking Required	
Retail	8,640 / 2,000 = 4
Office	3,200 / 2,000 = 2
Coffee	72 @ 5% = 4
Restaurant	173 @ 5% = 9
Total	19
Bike Parking Provided 19	



Proposed Phase 2

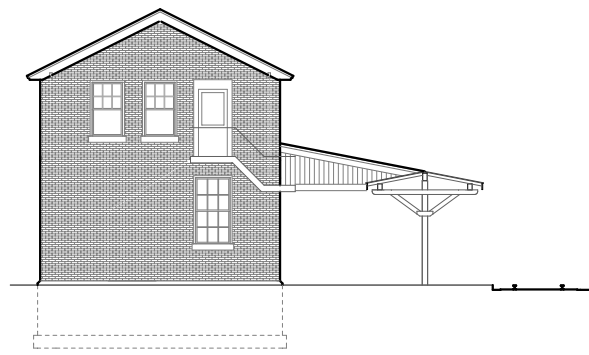
Site Data:

Site Area	72,686 SF
Existing Impervious Surface	
Building	16,535 SF
Pavement	30,555 SF
Train	3,900 SF
Walks	4,440 SF
Total	55,390 SF
Proposed Impervious Surface	
Building	17,175 SF
Pavement	30,440 SF
Train	3,900 SF
Walks	6,160 SF
Total	57,675 SF
Change in Impervious Surface	
Removed	2,905 SF
Added	4,510 SF
Net	1,605 SF
Disturbed Area 7,575 SF	

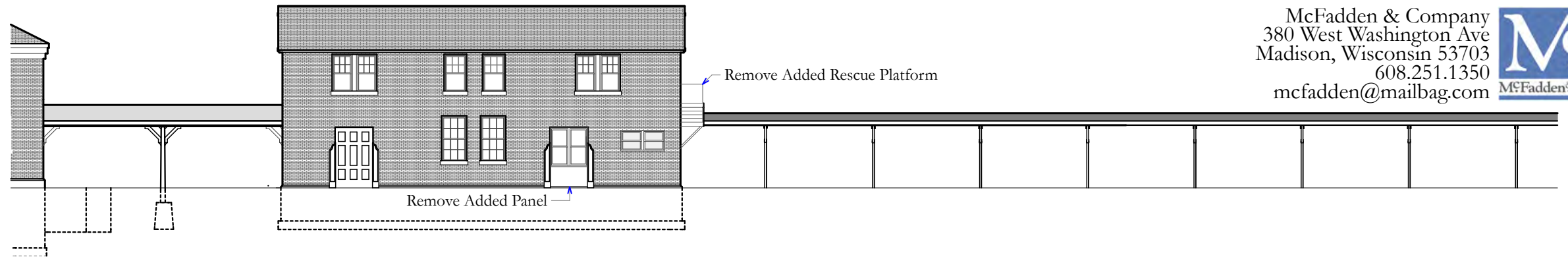


Proposed Phase I

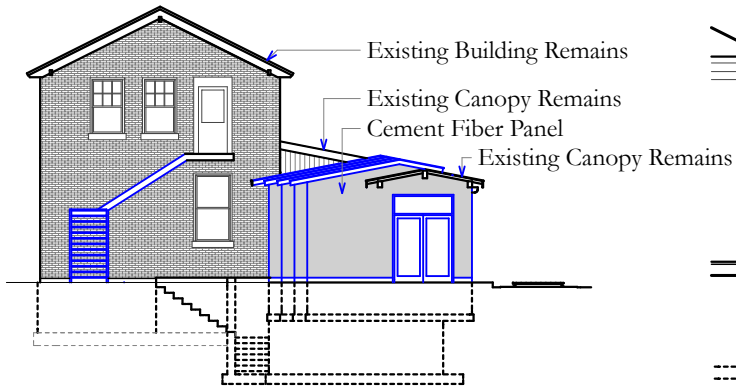
Phase I



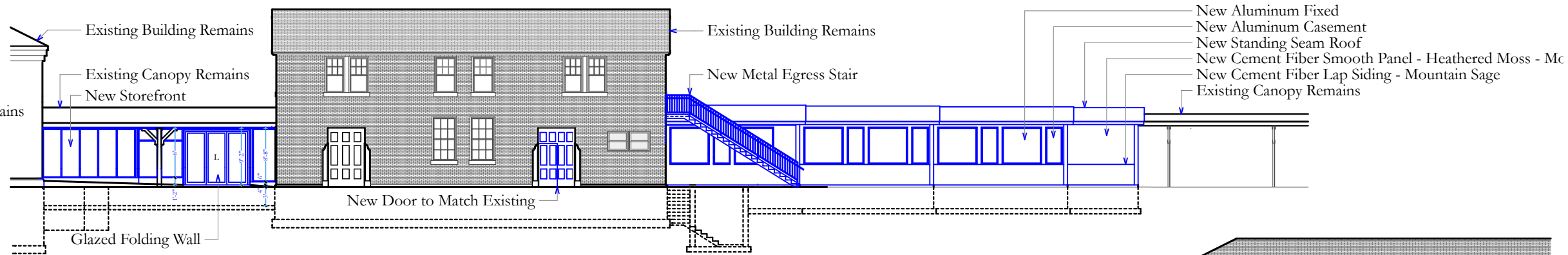
Existing West



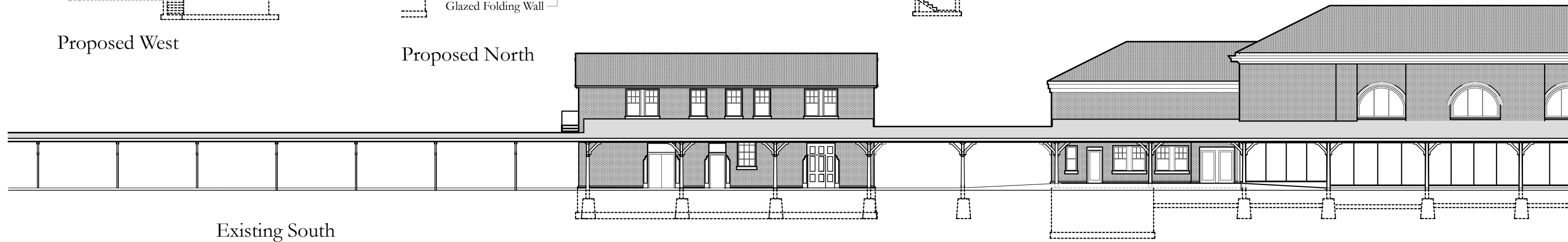
Proposed North



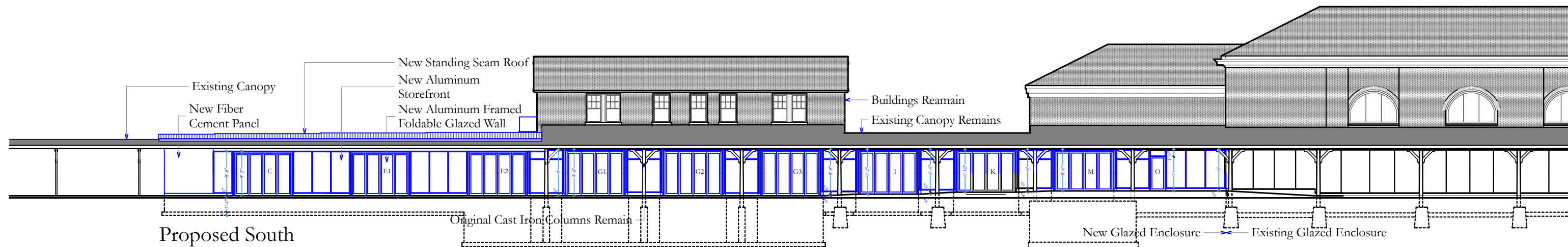
Proposed West



Proposed North

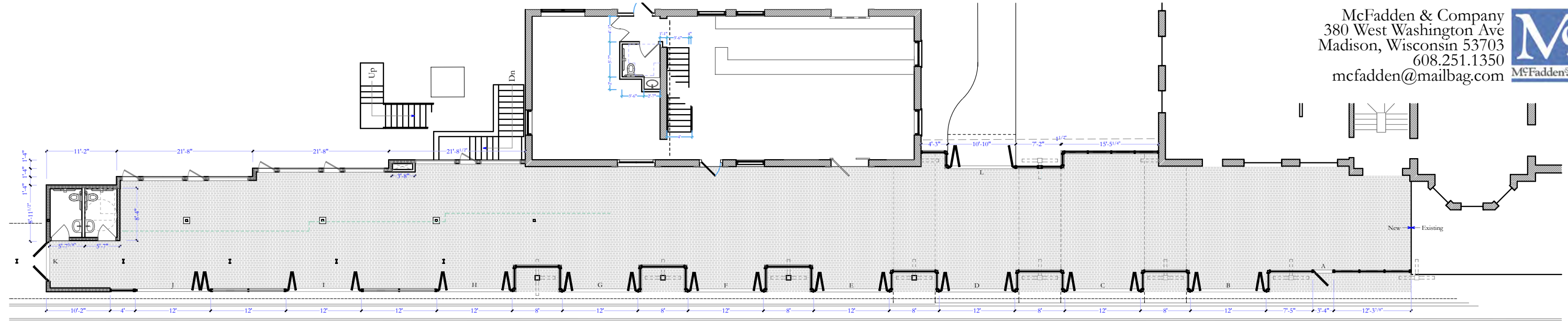


Existing South



Proposed South

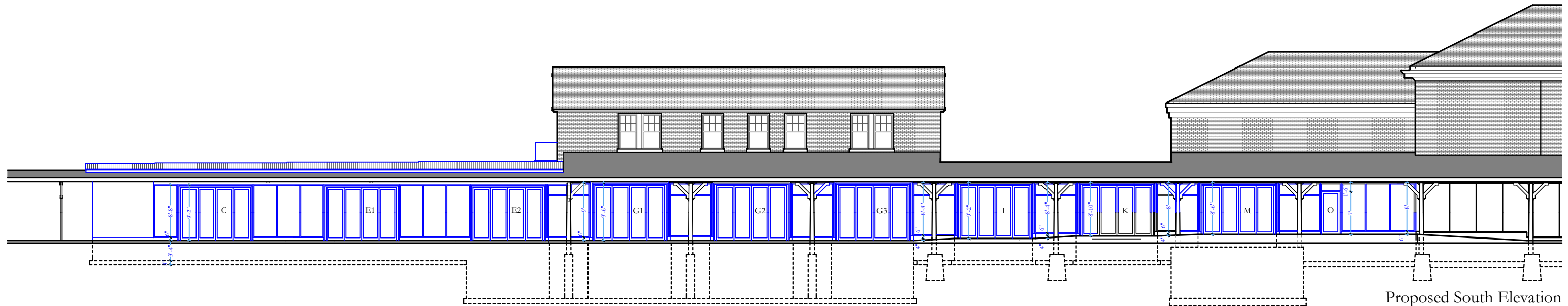
Note: All new and altered items shown in blue. The existing buildings, the canopy and other elements remain unchanged.



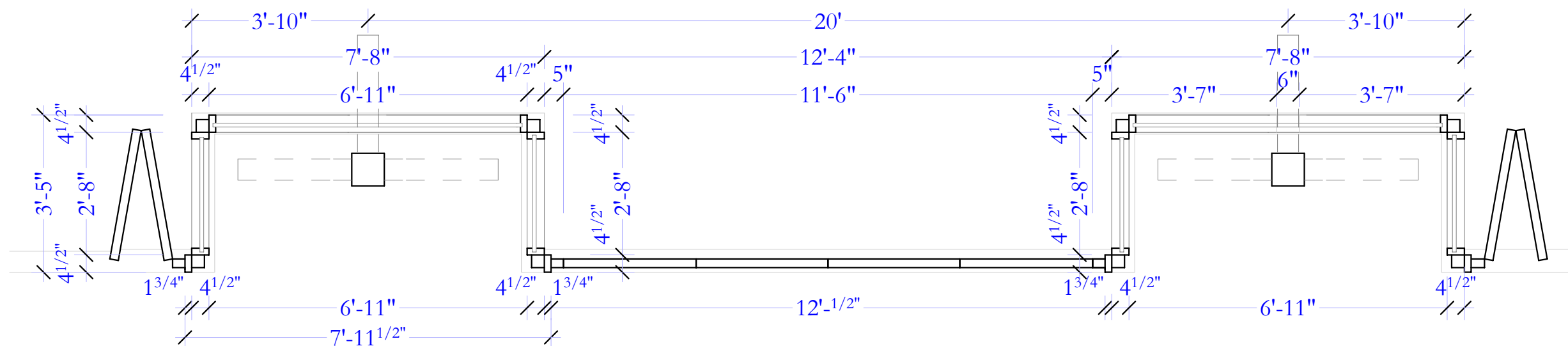
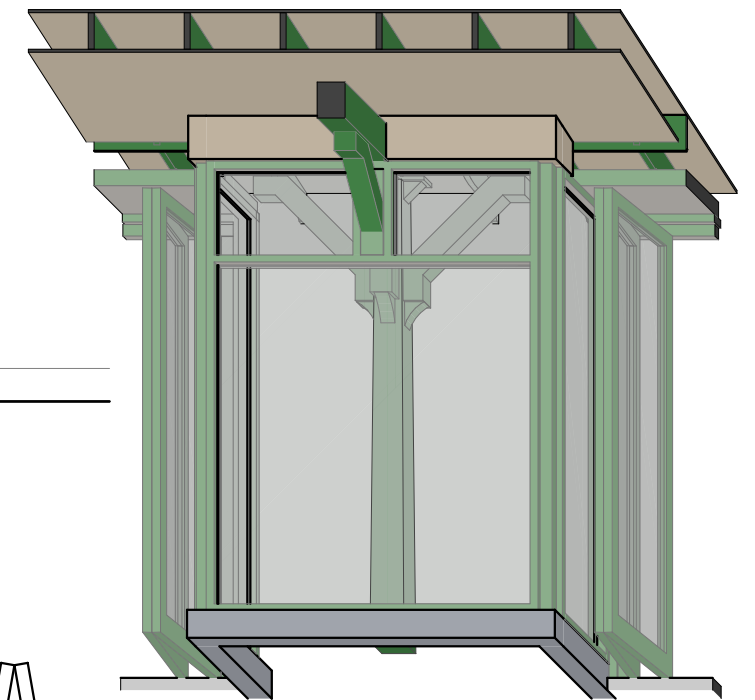
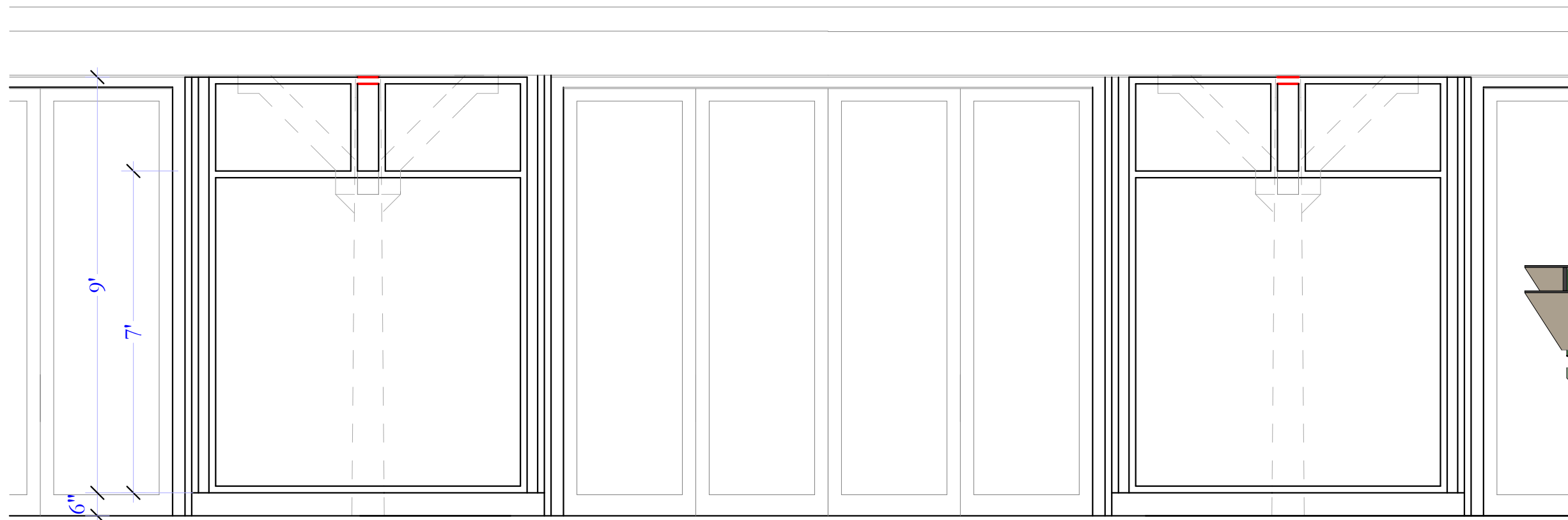
Proposed Plan

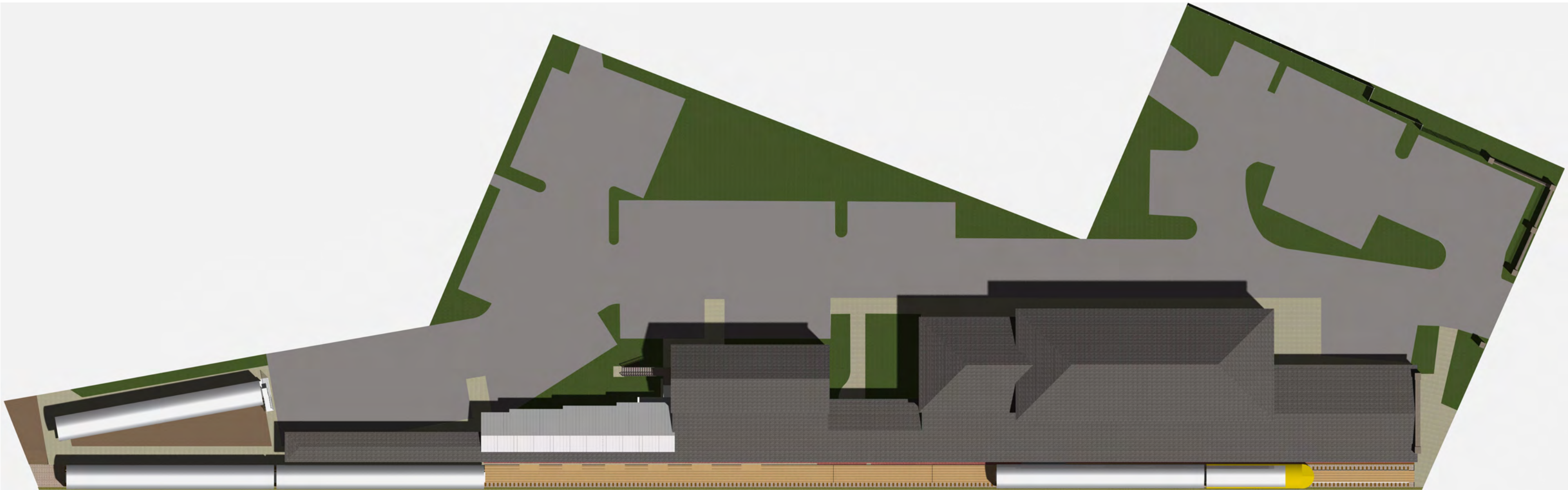


Existing South Elevation



Proposed South Elevation







View From the West



View From the North

PLANT LIST

LANDSCAPE WORKSHEET

KEY	QUAN	SIZE	COMMON NAME	ROOT
	(12)		<u>Canopy Trees</u>	
1	1	12"+	Ash	EX
1	1	12"+	Catalpa	EX
1	1	12"+	English Oak	EX
1	1	12"+	Honeylocust	EX
1	1	12"+	Linden	EX
1	1	12"+	Honeylocust	EX
4	4	12"+	Quaking Aspen	EX
1	1	12"+	Red Oak	EX
1	1	12"+	White Oak	EX
6	6	2 1/2"+	Titanium Maple	BB
	(8)		<u>Ornamental Trees</u>	
1	1	6"+	Amur Maple	EX
1	1	6"+	Indian Summer Crab	EX
1	1	6"+	Ironwood	EX
1	1	10"+	Pagoda Dogwood	EX
1	1	6"+	Red Splendor Crab	EX
1	1	6"+	Sargent Crab	EX
2	2	6"+	Serviceberry	EX
	(2)		<u>Evergreen Trees</u>	
2	2	25'+	Austrian Pine	EX
	(21)		<u>Deciduous Shrubs</u>	
4	4	3'+	Alpine Current	EX
2	2	6'+	Lilac	EX
1	1	3'+	Peking Cotoneaster	EX
4	4	3'+	Potentilla	EX
1	1	6'+	Purple Leaf Sand Cherry	EX
1	1	3'+	Rose	EX
4	4	3'+	Spirea	EX
2	2	5'+	Viburnum	EX
2	2	3'+	Witchhazel	EX
	(42)		<u>Evergreen Shrubs</u>	
2	2	24"+	Blue Chip Juniper	EX
13	13	36"+	Densiform Yew	EX
6	6	36"+	Pfitzer Juniper	EX
4	4	36"+	Sea Green Juniper	EX
17	17	24"+	Savin Juniper	EX
	(110)		<u>Perennials</u>	
110	110	18"+	Existing Perennials and Grasses	EX

Zoning Classification: UMX

Landscape Points Required

Developed Area = 55,390 SF

Landscape Points Required: 55,390/300 = 185 units
 185 units x 5 points/unit = 1,185 points

Total Landscape Points Required 925 points

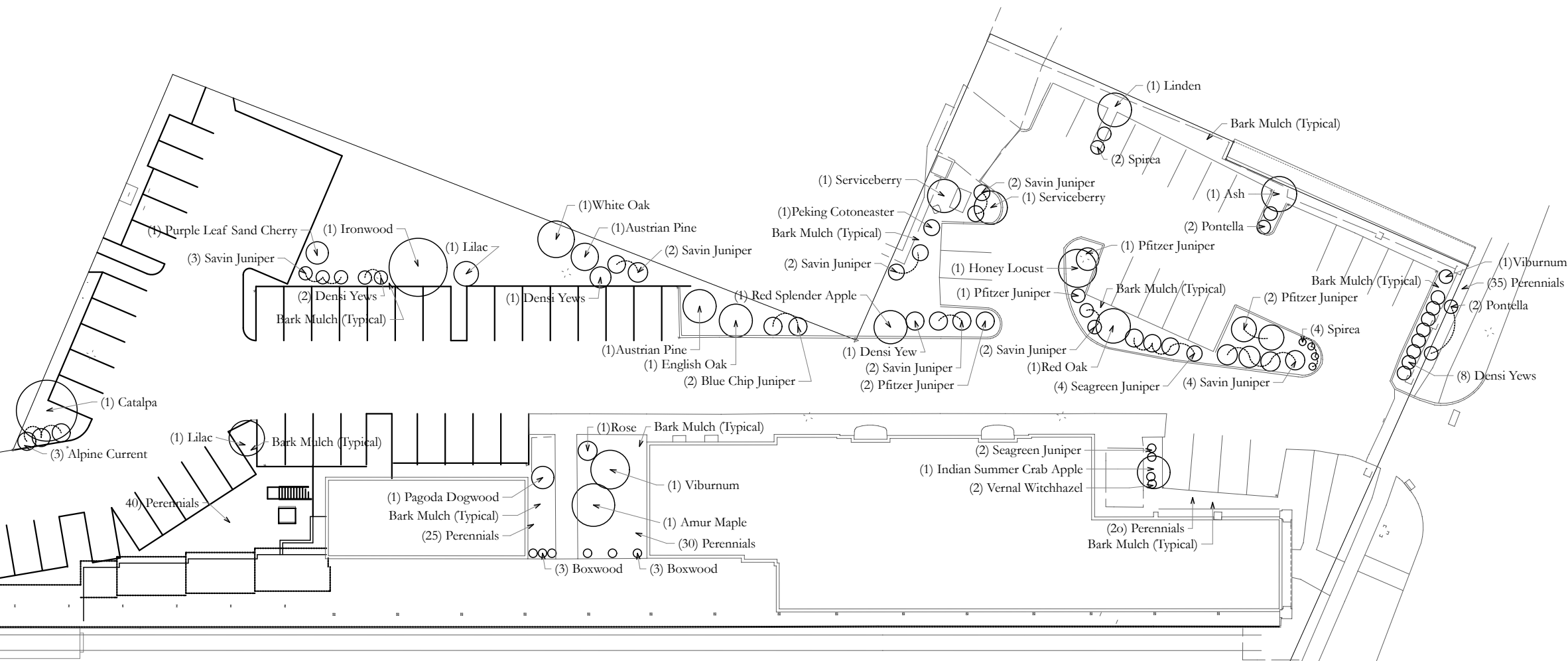
Landscape Points Supplied

Existing canopy trees - 12 @ 35 = 420 points
 Proposed canopy trees - 0 @ 35 = 210 points
 Existing evergreen trees - 2 @ 35 = 70 points
 Proposed evergreen trees - 0 @ 35 = 0 points
 Existing ornamental trees - 8 @ 15 = 120 points
 Proposed ornamental trees - 0 @ 15 = 0 points
 Existing upright evergreen shrubs - 0 @ 10 = 0 points
 Proposed upright evergreen shrubs - 0 @ 10 = 0 points
 Existing deciduous shrubs - 21 @ 3 = 63 points
 Proposed deciduous shrubs - 0 @ 3 = 0 points
 Existing evergreen shrubs - 42 @ 4 = 168 points
 Proposed evergreen shrubs - 0 @ 4 = 0 points
 Existing perennials & grasses 110 @ 2 = 220 points
 Proposed perennials & grasses 0 @ 2 = 0 points

Total landscape points supplied = 1,271 points

NOTES:

- 1) Repair disturbed lawn areas in with shredded topsoil, seed (Madison Parks mix), starter fertilizer, and mulch (straw mat or starter mulch pellets.)
- 2) Planting beds to receive shredded hardwood bark mulch spread to a depth of 3".
- 3) Individual trees and shrubs in lawn to areas receive shredded hardwood bark mulch plant rings (4' diameter) spread to a depth of 3".



VISION 8



WALL / CEILING / PENDANT MOUNT LED

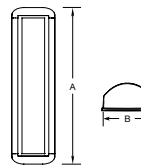
Fixture Type	Date
Job Name	Approved By
Customer Name	

SPECIFICATIONS

Description	The Vision 8 series features an all aluminum construction and optional wet location listing which allows it to be used in nearly any environmental condition. Designed in conjunction with an ophthalmologist, the polycarbonate lens provides complete control of glare and lamp image while maintaining the high efficiency of clear optical material. The Vision 8 series can be row mounted to any length and can be equipped with energy efficient occupancy sensors. Natorium finish is standard for all versions of this fixture.
Housing	Marine grade heat treated extruded aluminum. Chemically primed and finished with robotically applied polyester powder coat.
Grill	Marine grade die cast aluminum finished with polyester powder coat and secured to housing with tamper resistant stainless steel machine screws.
Lens	Extruded UV stabilized opal polycarbonate with integral prisms. Maximum wall thickness 0.180". Secured to housing with the die cast aluminum clamps and stainless steel TORX® head screws.
End Caps	Die-cast marine grade aluminum with conduit knockouts that are visible from interior of end cap.
Drivers	Constant current driver at 700mA, 120-277V, 347V optional.
LED	Samsung LM561B+ series @ 3000K, 3500K, 4000K, or 5000K and 82 CRI wired in parallel-series. L ₇₀ projected life of over 130,000 hours at 50°C. Ten year warranty on LED boards against operational defects. Tested in accordance with LM-80.
UL Listing	UL, CUL, Damp Standard, Wet optional.
Lifetime Warranty	Luminaire LED Incorporated will repair or replace any fixture damaged due to vandalism for the lifetime of the installation.

DIMENSIONAL DATA

	A	B	C
VPF82	27.64	8.75	3.96
VPF83	37.87	8.75	3.96
VPF84	49.68	8.75	3.96



Luminaire LED
www.luminaireled.net

5 Sutton Place
P.O. Box 2469
Edison, NJ 08818
P: 732.549.0056
F: 732.549.9737

Luminaire LED Incorporated products are manufactured in the USA with components purchased from USA sources. Please see the website for the full disclaimer regarding the use of the word "USA" in the product name. For more information, please contact our website for current product information.
Rev: 06/17

McGraw-Edison
www.mcgraw-edison.com

McGraw-Edison

Project #	Type
Project	Date
Comments	
Prepared by	

DESCRIPTION

The Galleon™ LED luminaire delivers exceptional performance in a highly scalable, low-profile design. Patented, high-efficiency AccuLED Optics™ system provides uniform and energy conscious illumination to walkways, parking lots, roadways, building areas and security lighting applications. IP68 rated and UL-cUL Listed for wet locations.

SPECIFICATION FEATURES

Construction
Extruded aluminum driver enclosure thermally isolated from Light Squares for optimal thermal performance. Heavy-wall, die-cast aluminum end caps enclose housing and die-cast aluminum heat sink. A unique, patent pending interlocking housing and heat sink provides scalability with superior structural rigidity. 30 vibration tested and rated. Optional tool-less hardware available for ease of entry into electrical chamber. Housing is IP68 rated.

Optics
Patented, high-efficiency injection-molded AccuLED Optics technology. Optics are precisely designed to shape the distribution maximizing efficiency and application spacing. AccuLED Optics create consistent distributions with the scalability to meet customized application requirements. Offered standard in 4000K (+/- 270K) CCT 70 CRI. Optional 3000K, 5000K and 6000K CCT.

Electrical
LED drivers are mounted to removable tray assembly for ease of maintenance. 120-277V 50/60Hz, 347V 60Hz or 480V 60Hz operation. 480V is compatible for use with 480V Wye systems only. Standard with 0-10V dimming. Shipped standard with Eaton proprietary circuit module designed to withstand 10kV of transient line surge. The Galleon LED luminaire is suitable for operation in -40°C to 40°C ambient environments. For applications with ambient temperatures exceeding 40°C, specify the HA (High Ambient) option. Light Squares are IP68 rated. Greater than 90% lumen maintenance expected at 60,000 hours. Available in standard 1A drive current and optional 800mA, 800mA and 1200mA drive currents (nominal).

Mounting
STANDARD ARM MOUNT: Extruded aluminum arm includes internal bolt guides allowing for easy positioning of fixture during mounting. When mounting two or more luminaires at 90° and 120° apart, the EA extended arm may be required. Refer to the

arm mounting requirement table. Round pole adapter included. For wall mounting, specify wall mount bracket option. QUICK MOUNT ARM: Adapter is bolted directly to the pole. Quick mount arm slide into place on the adapter and is secured via two screws, facilitating quick and easy installation. The versatile, patent pending, quick mount arm accommodates multiple drill patterns ranging from 1-1/2" to 4-7/8". Removal of the door on the quick mount arm enables wiring of the fixture without having to access the driver compartment. A knock-out enables round pole mounting.

Finish
Housing finished in super durable TSC polyester powder coat paint, 2.5 mil nominal thickness for superior protection against fade and wear. Heat sink is powder coated black. Standard housing colors include black, bronze, grey, white, dark platinum and graphite metallic. RAL and custom color matches available.

Warranty
Five-year warranty.

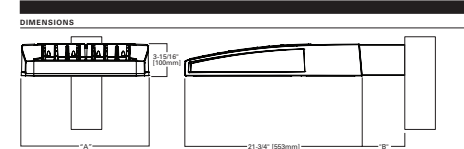
GLEON GALLEON LED

1-10 Light Squares
Solid State LED
AREA/SITE LUMINAIRE



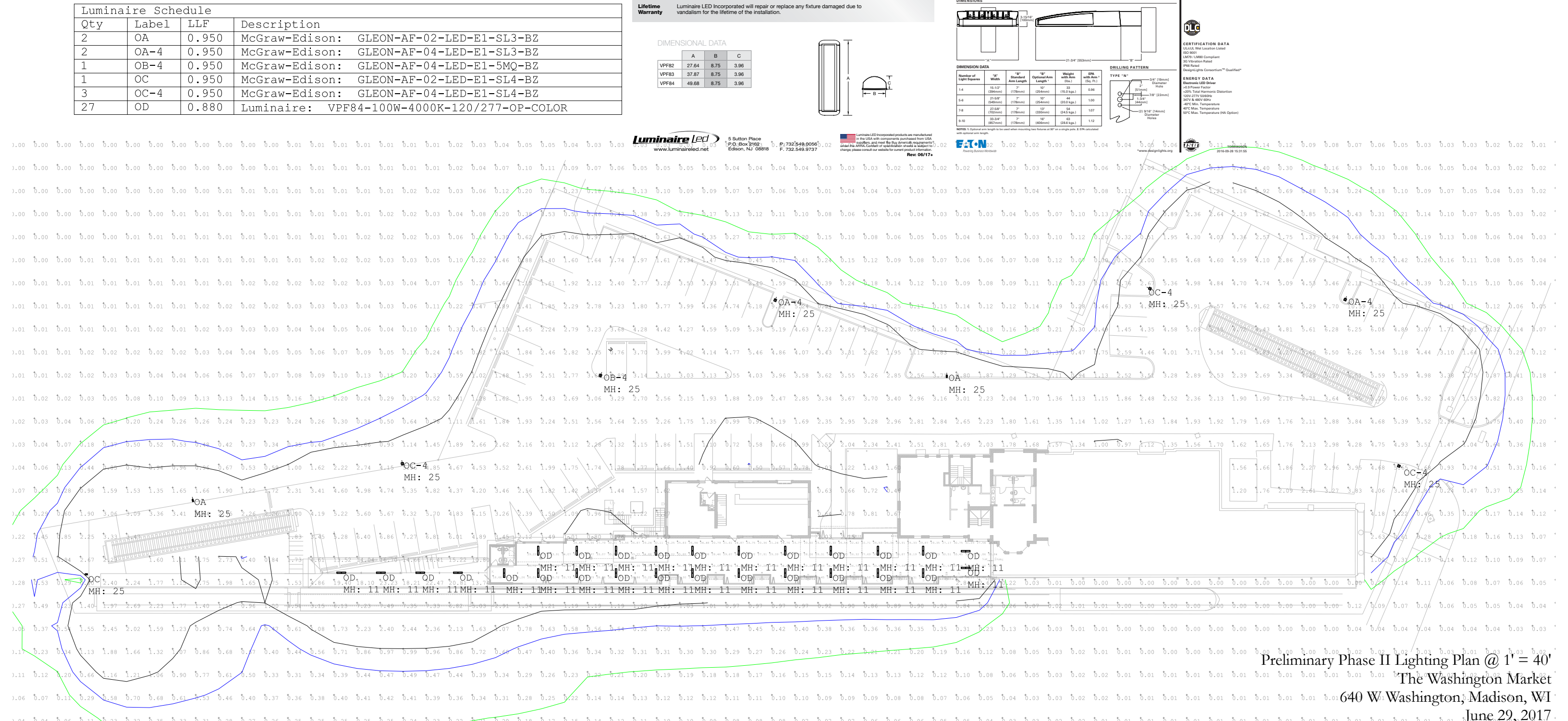
CERTIFICATION DATA
UL Listed
IEC 60598-2-22
IEC 60598-2-23
IEC 60598-2-24
IEC 60598-2-25
IEC 60598-2-26
IEC 60598-2-27
IEC 60598-2-28
IEC 60598-2-29
IEC 60598-2-30
IEC 60598-2-31
IEC 60598-2-32
IEC 60598-2-33
IEC 60598-2-34
IEC 60598-2-35
IEC 60598-2-36
IEC 60598-2-37
IEC 60598-2-38
IEC 60598-2-39
IEC 60598-2-40
IEC 60598-2-41
IEC 60598-2-42
IEC 60598-2-43
IEC 60598-2-44
IEC 60598-2-45
IEC 60598-2-46
IEC 60598-2-47
IEC 60598-2-48
IEC 60598-2-49
IEC 60598-2-50
IEC 60598-2-51
IEC 60598-2-52
IEC 60598-2-53
IEC 60598-2-54
IEC 60598-2-55
IEC 60598-2-56
IEC 60598-2-57
IEC 60598-2-58
IEC 60598-2-59
IEC 60598-2-60
IEC 60598-2-61
IEC 60598-2-62
IEC 60598-2-63
IEC 60598-2-64
IEC 60598-2-65
IEC 60598-2-66
IEC 60598-2-67
IEC 60598-2-68
IEC 60598-2-69
IEC 60598-2-70
IEC 60598-2-71
IEC 60598-2-72
IEC 60598-2-73
IEC 60598-2-74
IEC 60598-2-75
IEC 60598-2-76
IEC 60598-2-77
IEC 60598-2-78
IEC 60598-2-79
IEC 60598-2-80
IEC 60598-2-81
IEC 60598-2-82
IEC 60598-2-83
IEC 60598-2-84
IEC 60598-2-85
IEC 60598-2-86
IEC 60598-2-87
IEC 60598-2-88
IEC 60598-2-89
IEC 60598-2-90
IEC 60598-2-91
IEC 60598-2-92
IEC 60598-2-93
IEC 60598-2-94
IEC 60598-2-95
IEC 60598-2-96
IEC 60598-2-97
IEC 60598-2-98
IEC 60598-2-99
IEC 60598-2-100

ENERGY DATA
Electronics LED Driver
+3.3 Power Factor
+20% Total Harmonic Distortion
120V/277V/50/60Hz
347V & 480V 60Hz
40°C Max. Temperature
40°C Max. Temperature
80°C Max. Temperature (HA Option)



Dimension	1" Standard Arm Length	18" Optional Arm Length	Weight with Arm (lbs.)	EMF with Arm 1' (mV/ft.)
1.4	15.12" (384mm)	7" (178mm)	39	0.58
5.4	24.66" (625mm)	17" (430mm)	103.3	1.00
7.8	27.58" (700mm)	17" (430mm)	124	1.07
9.30	33.34" (848mm)	17" (430mm)	163	1.19

NOTE: 1. Optional arm length for use with other mounting hardware on a single pole & 3/8" threaded with optional arm length.
2. Weight with arm is for a single pole & 3/8" threaded with optional arm length.
3. EMF with arm 1' is for a single pole & 3/8" threaded with optional arm length.
4. For more information, please contact our website for current product information.
Rev: 06/17



Preliminary Phase II Lighting Plan @ 1' = 40'
The Washington Market
640 W Washington, Madison, WI
June 29, 2017