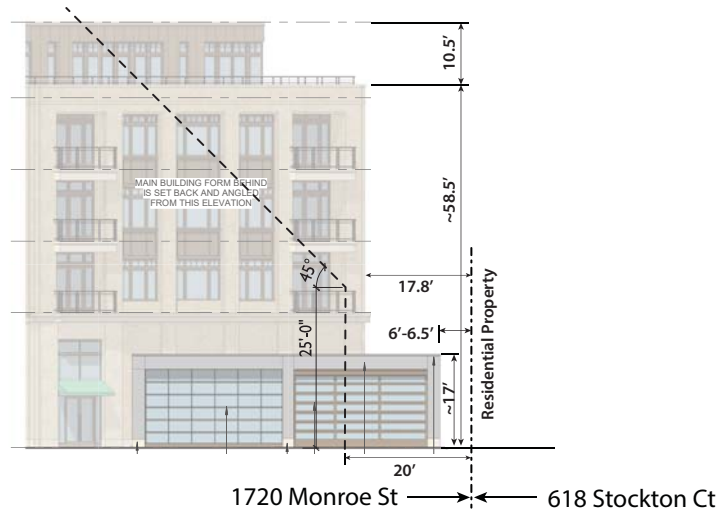


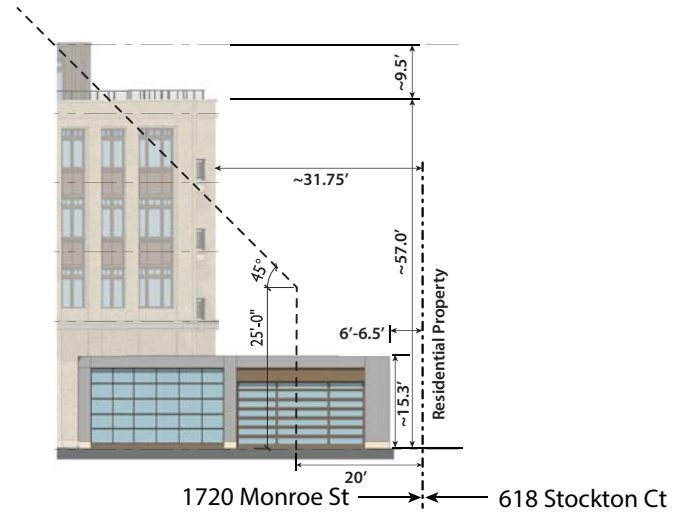
BUILDING SETBACK AND STEPBACK ANALYSIS TO THE ADJACENT/NEAREST RESIDENTIAL DISTRICT FOR VARIOUS DEVELOPMENTS ALONG MONROE STREET

Source: City of Madison Planning Department

1720 MONROE ST & 625 S. SPOONER ST
ORIGINAL (11.20.2017) SUBMITTAL :
Stockton Court (Northeast) Elevation



1720 MONROE ST & 625 S. SPOONER ST
REVISED (02.07.2018) SUBMITTAL :
Stockton Court (Northeast) Elevation



2620 MONROE ST (665 KNICKERBOCKER ST) :
Knickerbocker St (Southwest) Elevation



3414 MONROE ST (THE GLEN) : Glenway St (West) Elevation



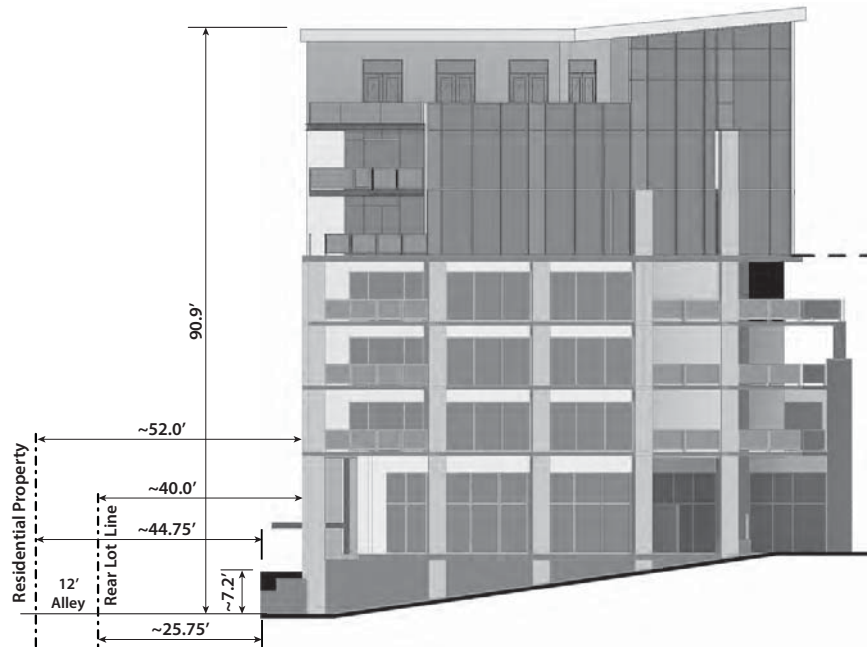
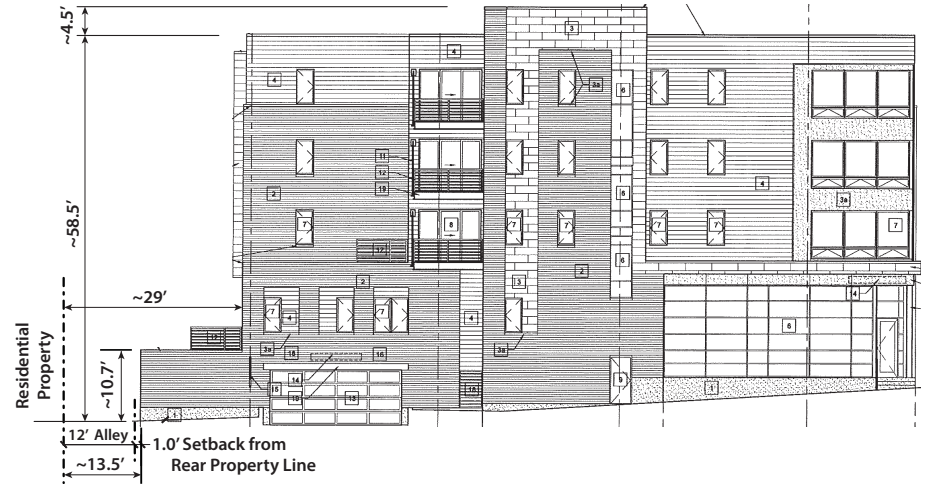
BUILDING SETBACK AND STEPBACK ANALYSIS TO THE ADJACENT/NEAREST RESIDENTIAL DISTRICT FOR VARIOUS DEVELOPMENTS ALONG MONROE STREET

Source: City of Madison Planning Department

1911 MONROE ST (EMPIRE PHOTO) : Southeast Elevation



1605 MONROE ST : Oakland Ave (East) Elevation



1501 MONROE ST (HOTEL RED) : Regent St (East) Elevation