

## **FEBRUARY 2014 WRITTEN REPORT OF SUPERVISOR'S ACTIVITIES EAST PARKS – CRAIG KLINKE, SUPERVISOR**

January has proven to be a busy and challenging month for Park Operations. With almost daily snowfall and very cold temperatures we have had to work very hard to keep our ice rinks open and in good condition and to keep our snow routes safe for the public. There were several days that it was even too cold to flood. The latest snowfall that occurred over 1/25 and 1/26 proved particularly challenging as high winds accompanied the 4.5 inches of snow. Drifting has been a big problem and in some locations we've had drifts as high as 6 feet.

We hope that Mother Nature gives us a little break in February. We don't mind the cold temperatures; however, the almost daily snowfall stretches our resources to the limits. We hope temperatures and weather cooperate to let us keep the ice rinks open as long as possible. Once rink and snow operations start to come to an end we are going to shift gears to EAB. Parks is in the process of hiring an arborist to assist us in the removal of ash trees. Ash tree removal is going to be a priority for us and will fundamentally change the way we use our resources in the future.

## **WEST PARKS – LISA LASCHINGER, SUPERVISOR**

January was what some may consider a reminder of what Wisconsin winters really are! We had only one small period of warm temps that melted some of the ice and many days of extreme cold along with abundant snow. Staff has been very busy plowing snow on our assigned routes. The weather was perfect for our ice rinks. Staff and Adopt Ice Volunteers worked hard to clear and flood the rinks.

As we head into February, it appears we will have another period of extreme cold. Crews will continue with snow and ice maintenance as they have over the past month and a half. It looks like the ice season will continue well into February. As time allows we will begin preemptive removal of Ash trees to assist with EAB efforts. We will also need to begin our necessary table and barrel repairs as time and resources allow. We will also be contacting seasonal staff and planning accordingly for the spring.

## **CONSERVATION – RUSS HEFTY**

Below normal temperatures and frequent snowfalls created outstanding conditions for winter recreation. Cross country skiing trails have been in service without interruption since mid-December. The new trails at Yahara Golf Course have been well received. In the future it is hoped that the clubhouse can be updated to allow winter use for rentals and concessions. Yahara has the potential to be a premier cross country ski destination. A snow shoe course has also been marked on the property.

The oak savanna restoration initiative moved forward at both the North and South units of Cherokee Marsh. Contractors thinned trees competing with oaks to restore the canopy structure of an oak savanna near the new ponds at South Cherokee. At North Cherokee a contractor thinned the canopy on the 8 acre oak woodland in the 5<sup>th</sup> Addition acquisition. The adjacent agricultural fields will be seeded to prairie late winter or early spring. We anticipate working on additional oak savanna restoration units at North Cherokee in February using contractors to thin the tree canopy. Follow up management will involve exotic species control, seed introductions, and prescribed burns.

## **MALL CONCOURSE – TOM SKAIFE, SUPERVISOR; LAURA BAUER, LEADSWORKER**

The unusually cold weather this winter has been challenging for the Mall Concourse crew, just as it has undoubtedly been for all sections of the Parks Division. Cold-related equipment problems, as well as limitations on how long people can safely work outside have been the norm rather than the exception.

The temperatures are impacting the Madison Streets Division as well, in the form of salt delivery problems. As this is where we obtain our rock salt, it affects us directly, so we've been mixing our limited supply of salt with sand before we spread it on the sidewalks. This practice is not popular with us because it is difficult to get the sand to come out of our spreaders, and it's not popular with businesses either, as the sand quickly gets tracked indoors. Sand also creates lots of cleanup problems once the snow begins to melt.

The upside of the weather, however, is that there is little refuse in the barrels, the garbage truck has not needed to go out every day, and the recyclables are collected less often. Cold temperatures mean that there are fewer people hanging around outside, both during the day and late at night. The lack of foot traffic has also allowed us to load and haul away a significant amount of snow, particularly from the State Street sidewalks. This is something which is very difficult to do when the sidewalks are busy.

During the rare "warm" days, we're out shoveling around benches and bike racks, stripping the old posters off of the self-service kiosks, and updating the postings in the kiosks with doors. If it ever gets above freezing again, we would like to clean some bus shelter windows.

The principal downtown special event of the season, the Madison Winter Festival, returns to the Capitol Square the weekend of February 15<sup>th</sup> and 16<sup>th</sup> this year. It's amazing to see the Square transformed into a Nordic ski course, the spectator turnout is always impressive, and the cleanup effort by the organizers is especially noteworthy.

**EVENTS COORDINATOR – KELLI LAMBERTY**

**JANUARY 2014 Event Report / FEBRUARY 2014 Event Calendar**

DATE		EVENT	LOCATION
<b>JANUARY</b>			
Wed.	Jan. 8	Video Tape Shoot	200 Chadbourne Ave.
Fri.	Jan. 10	Snow Flake	Overture
Fri.	Jan. 10	Madison Parks Groove and Glide	Elver Park
Sat.	Jan. 11	Kids Ice Fishing Day - Yahara Fishing Club	Brittingham Park
Sun.	Jan. 12	Learn to Skate	Vilas Park
Mon.	Jan. 13	Stargazing in Madison Parks	Odana Hills Golf Course
Tu.	Jan. 14	Madison Nordic Ski Club - Elver Race Series	Elver Park
Sat.	Jan. 18	Freeze For Food	Vilas Park
Sun.	Jan. 18	Madison Parks Candelight Snowshoe	Edna Taylor Conservation Park
Fri.	Jan. 19	Madison Parks Groove and Glide	Elver Park
Fri.	Jan. 19	Cross Country Ski with a Doc	Vilas Park
Tu.	Jan. 21	Madison Nordic Ski Club - Elver Race Series	Elver Park
Fri.	Jan. 24	Madison Parks Moonlight Movie Series	Tenney Park
Fri.	Jan. 24	Mad City Pond Hockey Championships	Vilas Park
Sat.	Jan. 25	Mad City Pond Hockey Championships	Vilas Park
Sat.	Jan. 25	Ice Skate with a Doc	Vilas Park
Sun.	Jan. 26	Mad City Pond Hockey Championships	Vilas Park
Tu.	Jan. 28	Madison Nordic Ski Club - Elver Race Series	Elver Park
<b>JANUARY 2014 EVENT TOTALS</b>			
<b>Park Events</b>			<b>8</b>
<b>Parks Programming</b>			<b>8</b>
<b>Street Use events</b>			<b>2</b>
<b>TOTAL</b>			<b>18</b>
<b>FEBRUARY</b>			
Sat.	Feb. 1	Madison Parks Candelight Ski	Odana Hills Park
Tu.	Feb. 4	Madison Nordic Ski Club - Elver Race Series	Elver Park
Th.	Feb. 6	UW Band	Overture
Fri.	Feb. 7	UW Band	Overture
Fri.	Feb. 7	Madison Parks Groove and Glide	Vilas Park
Sat.	Feb. 8	Madison Polar Plunge	Willow Island
Sat.	Feb. 8	Snowshoe with a Doc	Edna Taylor Conservation Park
Sat.	Feb. 8	Madison Parks Moonlight Snowshoe	Cherokee Marsh
Tu.	Feb. 11	Madison Nordic Ski Club - Elver Race Series	Elver Park
Fri.	Feb. 14	Madison Parks Groove and Glide	Tenney Park
Fri.	Feb. 14	Madison Winter Festival - set-up	Capitol Square
Sat.	Feb. 15	Madison Winter Festival	Capitol Square
Sun.	Feb. 16	Madison Winter Festival	Capitol Square
Th.	Feb. 20	Complexions	Overture

**OLBRICH GARDENS – ROBERTA SLADKY**

Thanks to Olbrich Gardens Maintenance staff – Don Saunders and Jim Maier – for keeping the boilers and furnaces working during this frigid cold. Our plants – in the Conservatory and Greenhouse – depend on the heating systems to survive and the cold weather has taxed our aging physical plant much more than in anyone’s memory. Thanks Don and Jim! (from the plants!)

As the days get longer and the sunshine is more intense, the solar gain in the Bolz Conservatory gives the system a break – even when its 0 degrees outside! More and more visitors seek that tropical feeling as an escape from this already long winter.

Staff are preparing for Orchid Quest (Feb 1 – 2), Garden Expo, (Feb 7 – 9), and Olbrich’s Spring Show, (Mar 8 – 23). These shows and exhibits help all of us cope with the winter doldrums which we’ve had an extra dose of in January.

**Visitor comment from the past month:**

*“That you are doing a great thing for nature. Thank you very much for making a fun environment. Thank you so much!”* Eve (1-16-14)

**October Numbers**

<b>OBG Attendance</b> (counted from 9 – 4 only + event participants)	<b>2013</b>	<b>2012</b>	<b>Previous 5 yrs average</b>
December 1 - 31	21,007	20,850	22,961
YTD December 31	250,701	252,750	249,957
<b>Total Member Households (individuals*) December 31</b>	<b>6,226 (10,002)</b>	<b>6,375 (9,803)</b>	

*\*based on the number of membership cards issued*

<b>OBG City of Madison Major Revenue Categories</b> (unaudited)	<b>YTD 12/31/2013</b>	<b>YTD 12/31/2012</b>
Bolz Conservatory Admission YTD	\$73,219	\$66,443
Room Rentals YTD*	\$119,784	\$121,939
Catering Percentage Revenue YTD**	\$28,589	\$31,637
<b>TOTAL YTD</b>	<b>\$221,592</b>	<b>\$220,019</b>

*\*accrued at time of booking – up to 21 months before the rental date, \*\* accrued on a monthly basis following each catered rental*

**February 2014 Public Events at Olbrich Botanical Gardens call 608-246-4550 for more info**

**Conservatory Exhibit: Plants of the Dinosaur Age**, through March 2

**Children of the Rainforest** featuring **Altimevu, Ghanian** dance, Sat, Feb 15 @ 10:30 am and 1:30 pm, \$3 ages 13 and up, \$2 ages 3 – 12

**Winter Concert Series:** Sundays, 2 – 3 pm unless noted

February 2 – **Caravan Gypsy Swing**

February 9 – **Green TONE a cappella**

February 16 – **Kicks for Kids: Boys & Girls Club Music Makers**

February 23 -- **Botanical Boogie (w/ dance floor) from 2 – 3:30 pm: Ladies Must Swing (\$2 admission)**

**Education – February 2014** classes and programs 608/246-4550 for info/registration or visit [www.olbrich.org](http://www.olbrich.org)

**Wellness at the Gardens**

Yoga, Mondays 5:30 pm – 6:45 pm and Thursdays 7:30 – 8:45 am (drop in OK)

Tai Chi Meditation, Mondays, Jan 27 – March 17, 6 – 7 pm

**Garden Walk**

Plants of the Dinosaur Age Conservatory Walk, Sat, Feb 15, 4 – 5:30 pm

**Classes & Workshops for Adults**

Herbal Soap Making Fun! Sat, Feb 1, 1 – 5 pm

Planting a Prairie: Choose Your Own Adventure! Tues, Feb 4, 6:30 – 8:30 pm

Permaculture Gardening Techniques, Thurs, Feb 6, 6:30 – 8:30 pm

Introduction to Painting in Soft Pastel, Sat, Feb 8, 9:30 am – 4:30 pm

Spoon Carving – The Decorated Swedish Eating Spoon, Sat and Sun, Feb 8 & 9, 9:30 – 5 pm

Gardens of Stone, Tues, Feb 11, 6:30 – 8 pm

Container Combinations for Impact, Wed, Feb 12, 6:30 – 8:30 pm

Hypertufa Trough Workshop, Sunday, Feb 16, 1 – 4 pm

Successfully Grow Apple and Pear Trees, Thurs, Feb 20, 6:30 – 8:30 pm

Guest Author Jeanne Nolan presents *From the Ground Up*, Tues, Feb 25, 6:30 – 8 pm

A Healthy Lawn for a Healthy Community, Thurs, Feb 27, 6:30 – 8:30

## Learn & Play Together

**I Wonder...? Series** (grades K – 3 with adult)

What Does a Paleontologist Do? Fri, Feb 7, 6:30 – 7:30 pm

**Toddler Story and Stroll: Reading in the Rainforest Series** (ages 2 – 4 with adult)

Curious George, Fri, Feb 7, 10 – 11 am

**Toddler Story and Stroll: Rainforest Romp Series** (ages 2 – 4 with adult)

Colors in the Rainforest, Tues, Feb 18, 10 – 11 am

Senses in the Rainforest, Tues, Feb 25, 10 – 11 am

## FORESTRY – MARLA EDDY

Forestry Section	Total Trees	Total Hours
Cycle Pruning	67	40.5
Pruned by Request	94	144
Small Tree Pruning Cycle	1,267	539.5
Tree Removal	278	403
Storm Work/Hangers		9
Snow Plowing		167.75
Snow Removal		338

The Forestry Section is in EAB preemptive removal mode on the north side of the city which is part of the City's response plan. Preemptive removal criteria are trees that:

- Are in poor condition
- Located under power lines (high voltage)
- Are less than 10 inches in diameter

We have preemptively removed 215 ash street trees. When we determine an ash street is to be removed Forestry Staff leaves behind a letter at the adjacent property's front door advising them of the EAB infestation and removal.

Through the process of inspecting ash street trees for preemptive removals we discovered another pocket of EAB. This pocket is located on the far northeast side of the city near High Crossing Boulevard. Ash street trees in this area are mostly less than 10 inches in diameter. I have called the City of Sun Prairie to advise them of the latest EAB location found since they are so close to this border.

January was another snowy month and required snow removal service. The west forestry unit was able to keep moving on small tree pruning and pruning for upcoming engineering projects. The east unit has been able to do some small tree pruning but otherwise primarily they have been involved in EAB preemptive removals.

Forestry specialists have been involved with inspecting ash street trees and marking them for preemptive removal on the north side. The remaining ash street trees will be on the list for treatment which will begin mid to late May depending on when the ash trees have sprung all their leaves. Specialists have also prepared Digger's Hotline planting routes for spring 2014 planting season.

## PLANNING AND DEVELOPMENT – KAY RUTLEDGE

### Central Park

The construction of Phase 1A was substantially complete on January 14<sup>th</sup>. Work to be completed in the spring includes fine grading and seeding adjacent to the restroom facility, pressure testing the irrigation system, and completion of punch list items from the January 14<sup>th</sup> inspection. A temporary crossing has been installed in order to correlate the necessary work with the railroad, in accordance with the OCR's recent supplemental order. Construction of Phase 1B and the skatepark are scheduled to occur in 2014.

### Highland Manor Park

The building design was reviewed by the neighborhood at a second input meeting on October 17<sup>th</sup> and then approved by the Urban Design Commission on October 23<sup>rd</sup>. Plans and specifications have been delivered to the City for final review. The project is out for bid as of January 31, 2014.

### **Blackhawk Park**

The shelter installation work for Blackhawk Park is complete. The site restoration work will be reviewed this spring.

### **Basketball Court Reconstruction 2013**

Re-building the basketball courts at Worthington, Droster and Acewood Parks has been completed.

### **Hoyt Park**

Clearing and Phase 1 of the fence repairs was completed in November. Staff is working on the design for Phase 2 fence repairs to be completed Summer 2014.

### **Reservoir Park Playground**

Due to the early snowfall and below average temperatures, the construction deadline for Reservoir Park Playground will be extended to Spring 2014. Staff continues to work with the neighborhood and the Water Utility on the restoration plans to stabilize the slopes along the reservoir in conjunction with the construction of the new Booster Pump Station at Reservoir Park.

### **Warner Park Boat Launch Dredging**

The dredging started December 16<sup>th</sup>. It's been a bit of a struggle with the early onset of winter but Cattell is on schedule to complete the project early this year.

### **Splash Pads**

The design for the Elver Splash pad is complete. The Elver and Reindahl Park splash pads are out to bid as of January 31, 2014, with bids being opened on February 21, 2014.

### **Breese Stevens Field Lighting/Sound System Improvements**

The contractor started work in early January. It has been slow going for the first few weeks. The contractor plans to remove the existing poles the third week of February. Completion date for this project is May 24, 2014.

### **Bowman Field**

Forward Electric has installed the new conduit lines and lighting control panel at Bowman Field. Remaining work for spring includes connecting the control panel to the new transformer and test energizing the system. The second phase of this project will include new light fixtures and refurbishing the existing poles in the fall of 2014. During the interim between phases the field lights will continue to be served by the existing electrical system.

### **Rennebohm Park Tennis Court Lighting Improvements**

Construction is complete and punch list items have been addressed.

### **Athletic Field Lighting Upgrades**

Equipment to retrofit some of our athletic field lighting with "Control Link" – a program that will allow us to control (turn on/off) the lights from a computer terminal – arrived the first week of December. To start, we will be retrofitting the lighting systems for Elver softball and Demetral softball. Park Operations hopes to install the systems spring of 2014.

### **Brittingham Park at Proudfit**

Construction was originally scheduled to occur this fall, but City Engineering and the Wisconsin Southern Railroad have raised concerns regarding the existing site drainage. Given the additional study required, it's anticipated the project will be constructed in early spring 2014 once the drainage issues are resolved.

### **James Madison Park Shelter**

Destree Design was hired to perform an assessment of the existing shelter at James Madison Park. The final report will include recommendations for three levels of improvements; shelter stabilization, current code requirements, and potential build-out improvements; a draft of the report is under review. Staff and Destree Design held a neighborhood input meeting on October 23, 2013. At this meeting a wide variety of opinions regarding improvements to the park and shelter were expressed. Parks staff is investigating the use of an on-line survey tool to reach a larger audience for input.

### **Westside Dog Parks**

New dog parks have been approved for both Walnut Grove Park (the old skating area), and Odana School Park. The infrastructure (sidewalk and fence) are in at Odana. Our own crews have installed doggie bag dispensers, trash bins, etc. The kiosk has been ordered and will be installed as soon as weather allows; the dog park has been opened. Work by our Construction Crew on the Walnut Grove dog park late this fall was delayed due to the wet, snowy end of November. The Construction Crew will hopefully start the grading work for this project early in 2014, with completion planned for summer.

### **Warner Park Bike Path**

The project is complete with a small amount of restoration work remaining. Staff is working on locations for additional benches and trees along the new path, to be installed in spring.

### **Forest Hill Cemetery**

Masonry repairs have continued in 2013 for the buildings at Forest Hill Cemetery. Joe Daniels Construction completed work on the Chapel and the Receiving Vault. While the work on the Chapel is hold up well, some of the mortar applied on the Receiving Vault will need to be replaced as the temperatures were too cold for this work to bond correctly. This project is managed by City Facilities Management in partnership with Parks staff. We are also working with cemetery staff and Feick Design – an irrigation design company - to come up with a new waterline system for the cemetery.

### **Northland Manor Storm Sewer Replacement**

Staff is working with City Engineering on a storm sewer replacement project in Northland Manor Park. The project was nearly completed by Engineering staff before winter; a small section of storm sewer remains to be installed. This project was approved administratively by the Parks Superintendent.

### **Garver Mill**

The building condition study was presented to the Park Commission at their meeting in September; City Planning has been asked to prepare an RFP to hire a consultant to evaluate potential alternative uses for the building. The RFP will be brought back to the Park Commission in January/February. This project is managed by City Facilities Management in partnership with Parks staff.

### **Central Park Skatepark**

The design consultant team, Stantec and MSA, continue to develop the design for the Central Park skatepark. Two well-attended public meetings have been held to gather input from area skaters and neighborhood residents. A variety of site challenges have been identified, including high ground water and poor soils; the consultants are working on a solution to address these issues. The project is anticipated to go out for bid in April.

### **Tenney Park – Marston Bridge**

Plans and specifications are 95% complete. Applications have been submitted to the DNR, and we already have the approval letter from the State Historical Society. The project schedule was extended by two weeks because the January Landmarks Commission meeting we were scheduled to attend was canceled due to cold weather; we are now on the agenda for the February 3<sup>rd</sup> meeting. Staff attended the Tenney-Lapham Neighborhood Association meeting in January to discuss the project; it was well-received. The anticipated first ad for bid is now scheduled for February 14, 2014, with a start to work in early May and a tentative completion date of July 4, 2014.

### **Olbrich Park Canoe Launch**

Staff is working with City Engineering on a canoe launch at Olbrich Park near the canoe racks. Parks staff met with the Alder and Engineering to review the project on December 5<sup>th</sup>; a public input meeting was held on January 15<sup>th</sup> to discuss the project with the neighborhood. This is a 2014 Capital Budget project that will be managed by City Engineering in partnership with Parks staff.

### **Yahara River Bank Stabilization**

Staff is working with City Engineering on improvements to the Yahara River to stabilize the stream bank where the existing wooden retaining walls are deteriorating. The section from Rutledge Street to Jenifer Street, along the eastern shore, has been identified for spot improvements. Parks staff met with the Alder, Engineering and a representative from the Friends of Yahara River Parkway to review the project on December 5<sup>th</sup>; since a public input meeting was previously held for this project, Engineering will be sending out a letter to area residents to provide updated information regarding scope and construction timing. This project is managed by City Engineering in partnership with Parks staff.

### **Sauk Creek Park Playground**

Staff has begun design development for replacement of the existing playground at Sauk Creek Park. Staff held a Public Input Meeting on November 11<sup>th</sup> to discuss the proposed playground project, and had a subsequent meeting on December 19<sup>th</sup> with the neighborhood to finalize the playground design. This project is anticipated to go to the Board of Public Works for approval to advertise plans and specifications on February 19, 2014.

### **Haen Family Park Playground**

Staff has begun design development for replacement of the existing playground at Haen Family Park. Staff held a Public Input Meeting on December 2nd to discuss the proposed playground project, and had a subsequent meeting on January 14<sup>th</sup> to finalize the design. This project is anticipated to go to the Board of Public Works for approval to advertise plans and specifications on February 19, 2014.

### **Droster Park Playground**

Staff has begun design development for replacement of the existing playground at Droster Park. Staff held a Public Input Meeting on December 2nd to discuss the proposed playground project, and had a second playground meeting on January 29th to finalize the design. This project is anticipated to go to the Board of Public Works for approval to advertise plans and specifications on February 19, 2014.

### **Pilgrim Park Playground**

Staff has begun design development for replacement of the existing playground at Pilgrim Park. Staff held a Public Input Meeting on December 10<sup>th</sup> to discuss the proposed playground project and will hold a second playground meeting February 4th to finalize the design. This project is anticipated to go to the Board of Public Works for approval to advertise plans and specifications on February 19, 2014.

### **Everglade Park Playground**

Staff has begun initial design development for replacement of the existing playground at Everglade Park. Staff held a Public Input Meeting on December 11<sup>th</sup> to discuss the proposed playground project, and had a second meeting on January 23rd to finalize the design. This project is anticipated to go to the Board of Public Works for approval to advertise plans and specifications on February 19, 2014.

### **Westport Meadows Park Playground**

Staff has begun initial design development for replacement of the existing playground at Westport Meadows Park. Staff held a Public Input Meeting on December 18<sup>th</sup> to discuss the proposed playground project and will hold second meeting on February 3<sup>rd</sup> to finalize the design. This project is anticipated to go to the Board of Public Works for approval to advertise plans and specifications on February 19, 2014.

### **Breese Stevens Field Artificial Turf**

Project team meetings have begun with our consultant, Graef – USA. A project schedule has been developed and we are in the process of evaluating artificial turf options. We've also scheduled meetings with the neighborhood and other stakeholders; the meeting with the Breese Stevens Field user groups is scheduled for February 12<sup>th</sup> and a public input meeting is scheduled for February 18<sup>th</sup>.

### **2014 Park Landscaping**

Staff has completed the contract for the 2014 park landscaping project, coordinating project designs with park staff as well as the Water Utility and Parking Utility. This project is out to bid as of January 31, 2014; bids will be opened on February 21<sup>st</sup>.

### **2014 Park Paving Contract**

Staff is beginning initial design development for the 2014 Paving Contract. Evaluating various combinations of the work in an attempt to find the best way to package the variety of work we have in 2014 to get the best prices.

### **Yahara Hills Clubhouse**

Parks staff met with Facilities Management to begin initial design development for the improvements to the Yahara Hills Clubhouse. Potential improvements include replacement of the roof with additional insulation and other improvements to the building envelope to improve energy-efficiency for winter operations in the future. An evaluation of the HVAC system is also underway. This project is managed by City Facilities Management in partnership with Parks staff.

### **Bill Kettle Field**

City staff have been working with Dane County regarding the expansion of the landfill (Bill Kettle Field is located along the northeastern edge of the landfill). Due to the expansion, additional land is needed and Dane County would like to purchase Bill Kettle Field to expand the landfill to the east and relocate their stormwater ponds to the north and south. Dane County will also purchase a portion of the property owned by the Streets Division along the southeastern edge of the landfill, along with easements needed to complete the landfill expansion and stormwater-related improvements. Real Estate is exploring the best way to value the property for potential purchase by Dane County. Parks staff have begun discussions with user groups regarding potential opportunities to move their activity to other locations.

## Other Projects

- The Parks Division was tentatively awarded a \$200,000 Stewardship grant from the Department of Natural Resources for the acquisition of land to expand Merrill Springs Park. The grant amount will be used to offset City funds that were used for this acquisition. Additional documentation has been provided, and the award will be reviewed by the DNR Board in February before final award.
- Staff is working with neighborhood representatives and volunteers to coordinate improvements for a variety of parks including Reynolds Park, James Madison Park, Spring Harbor Park, Nakoma Park and Linden Grove Park.
- Participated in Neighborhood Resource Teams and/or Neighborhood Development Plans for Owls Creek, Arbor Hills/Leopold, University/Hill Farms and Hoyt Park.
- Parks lighting projects are underway to replace lighting with more energy-efficient fixtures. Replacements have been completed at Olbrich Botanical Complex, Brittingham, and Goodman Building B. This project is managed by City Facilities Management in partnership with Parks staff; Parks Operations staff are replacing the fixtures as the new fixtures arrive.
- Met with a representative of the Lucia Crest Neighborhood Association regarding the possibility of adding an edible landscaping area in Lucia Crest Park.

## COMMUNITY SERVICES – DAWN GROSDIDIER

### The following report was submitted by Ranger Supervisor Josh Schmitt

Attached in my monthly report for Dec- 13. Also included are some yearend charts which further examine the collected data from 2013.

The first chart shows our total number of contacts which more than doubled in 2013 during the same measured time period from 2012.

The included pie chart shows the type of violation as a percentage of total contacts.

Contacts rank in order as:

1. Customer contact (provided customer service- answered question, educated citizen)
2. Maintenance (completed routine maintenance task- straighten sign, send work order for larger item)
3. Check Area (foot patrol area to monitor area for issues)
4. Parking issue
5. No permanent address issue (issues involving people that lack permanent housing)
6. Dog violation (contact with dogs in park in violation of ordinance, 95% result in education only)

The rank of contacts shows that we are meeting our goals of education, operations, enforcement in the order we would like to see them ranked.

I would like to see the number of contacts for dog violations increased particularly in areas of high user conflict. Dog violations are an issue that we are all aware happen frequently in the parks and are the chief complaint of many citizens. While they represent 4% of total contacts dog violation probably represent 20% of total complaints (estimate- opinion only). In 2014, I would like to see dog violations closer to 8% of our total contacts to be more in line with the volume of complaints.

Overall, 2013 was a very positive year for the Park Ranger Staff. I am proud of what we have accomplished and look forward to continuing to improvement in 2014.

## 2013 RANGER REPORTS

Month	Jan 2013	Feb	Mar	Apr	May	Jun	July	Aug	Sept	Oct	Nov	Dec	2013 YTD
Alcohol Related Issue	6	3	2	10	18	23	23	8	11	8	0	0	112
Behavioral Ban	0	1	0	2	7	26	17	6	16	6	1	0	82
Check Area	26	13	10	29	55	82	152	104	66	51	41	28	657
Citizen Complaint Taken	0	0	2	4	13	16	12	15	12	3	1	3	82
Positive Customer Contact	45	70	35	53	134	151	168	189	117	61	18	30	980
Damage to Property	4	4	0	5	4	4	6	4	4	5	3	1	44
Dog Violation	4	6	18	37	34	21	11	13	4	4	7	1	160
Drugs	0	0	2	1	3	1	7	4	4	1	0	0	23
Event without reservation	1	0	0	0	1	0	5	8	0	1	0	0	16
Found Property	7	14	4	7	12	9	17	17	19	11	7	1	108



<b>Graffiti</b>	1	0	3	6	13	7	7	6	4	5	0	0	52
<b>No Permanent Address Issue</b>	11	19	9	12	10	38	28	21	21	9	2	3	183
<b>Incident</b>	13	11	2	4	3	7	10	3	10	8	0	0	71
<b>Maintenance</b>	17	39	7	30	64	101	133	82	75	49	21	34	652
<b>Misc</b>	1	0	1	2	6	23	2	10	6	1	4	2	68
<b>Not Open</b>	1	8	8	18	18	21	15	22	23	25	7	12	168
<b>Overflowing Trash</b>	6	0	2	3	2	1	4	4	1	1	1	2	27
<b>Parking issue</b>	9	20	11	12	69	50	67	41	23	19	5	0	326
<b>Sport Without Reservation</b>	0	0	1	29	1	0	0	1	0	1	0	0	33
<b>Vandalism</b>	2	2	1	0	0	0	0	0	0	1	0	0	6
<b>Negative Reports</b>	108	140	81	209	322	407	485	359	279	208	96	85	2779
<b>Positive Reports</b>	46	70	35	55	140	174	170	199	123	62	22	32	1128
<b>Ratio Neg Divided by Pos</b>	2.34	2	2.31	3.8	2.3	2.34	2.85	1.80	2.26	3.35	4.36	2.66	2.46

### 2013 Top 5 parks per negative call

	1	2	3	4	5
Jan	Tenney	Olbrich	Warner	Demetral	Elver
Feb	Warner	Olbrich	Brittingham	Tenney	James Madison
Mar	Olbrich	Warner	Elver	Door Creek	Olin
Apr	Warner	Olbrich	Elver	Brittingham	Hiestand
May	Olbrich	Warner	Vilas	James Madison	Brittingham
Jun	Warner	Reindahl	James Madison	Olin	Olbrich
July	Olin	Elver	Vilas	Brittingham	Warner
Aug	Olin	Warner	Elver	Olbrich	Demetral
Sept	Demetral	J Madison	Olin	Burr Jones	Olbrich
Oct	Warner	Burr Jones	Hiestand	Elver	Tenney
Nov	Warner	Elver	Olin	Eastmorland	Tenney
Dec	Elver	Tenney	Olin	Vilas	Odana

### 2013 Top 5 parks per positive call

	1	2	3	4	5
Feb	Olbrich	Tenney	Warner	Odana	Elver
Mar	Warner	Reindahl	Marlborough	Brittingham	Tenney
Apr	Veterans memorial	Warner	OB Sherry	Elver	Olin
May	Warner	Tenney	Hiestand	Olbrich	Vilas
Jun	Elver	Tenney	Olin	Warner	Vilas
July	Warner	Brittingham	James Madison	Vilas	Demetral

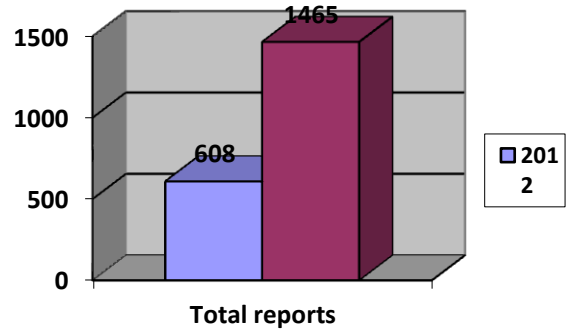
### 2013 Top 5 parks per positive call

	1	2	3	4	5
Feb	Olbrich	Tenney	Warner	Odana	Elver
Mar	Warner	Reindahl	Marlborough	Brittingham	Tenney
Apr	Veterans memorial	Warner	OB Sherry	Elver	Olin
May	Warner	Tenney	Hiestand	Olbrich	Vilas
Jun	Elver	Tenney	Olin	Warner	Vilas
July	Warner	Brittingham	James Madison	Vilas	Demetral
Aug	Hiestand	Warner	Olbrich	J Madison	Vilas
Sep	Tenney	Warner	Garner	Demetral	J Madison
Oct	Tenney	Warner	Hiestand	Demetral	Cherokee
Nov	Warner	Demetral	Gates of Heaven	Tenney	Olin
Dec	Tenney	Olbrich	Olin	Elver	Heritage

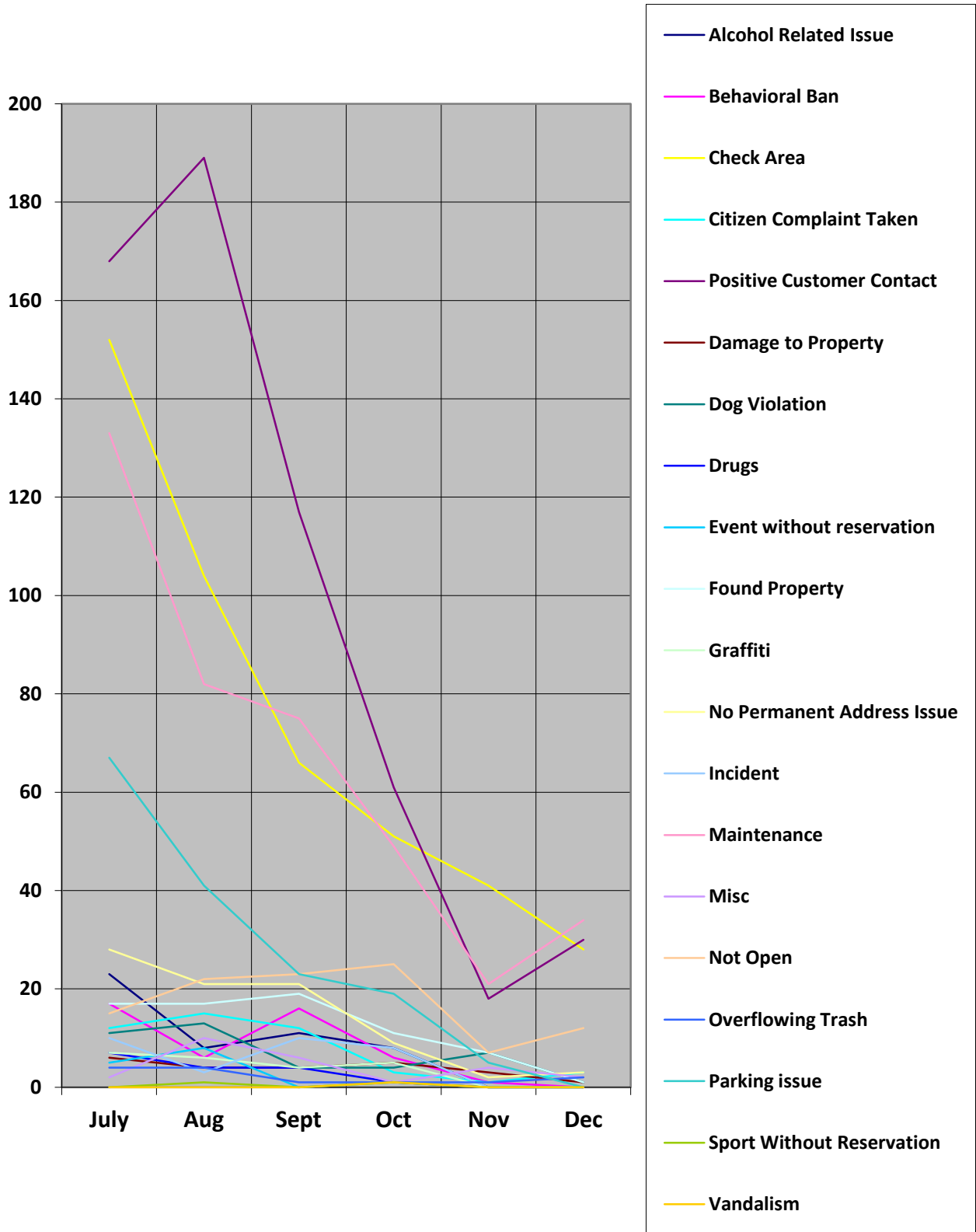
2012 Comparison

Month	Aug	Sept	Oct	Nov	Dec	2012 YTD
Alcohol Related Issue	23	15	7	2	3	50
Behavioral Ban	16	4	11	0	0	31
Check Area			1	2	15	18
Citizen Complaint Taken	7	8	6	4	0	25
Positive Customer Contact	38	44	32	2	19	135
Damage to Property	5	4	1	0	1	11
Dog Violation	8	6	2	1	4	21
Drugs			1	0	0	1
Event without reservation	2	1	1	0	0	4
Found Property				3	8	11
Graffiti	5	3	4	1	0	13
No Permanent Address Issue		36	10	6	2	54
Incident			1	0	6	7
Maintenance	18	48	20	0	1	87
Misc	20	46	3	0	0	69
Not Open	9	10	13	2	6	41
Overflowing Trash	3	1	0	0	1	5
Parking issue			4	0	3	7
Sport Without Reservation		1	0	0	0	1
Vandalism	5	3	8	0	1	17
<b>Negative Reports</b>	96	176	80	21	51	404
<b>Positive Reports</b>	58	90	35	2	19	204
<b>Ratio Negative Divided by Positive</b>	1.65	1.88	2.29	10.5	2.68	1.98

Aug- Dec 2012 vs 2013 total reported contacts



## Ranger calls for service second half of 2013



# 2013 Park Ranger contacts as percent

