

LIVE ON KING STREET

Security Action Plan Addendum as requested by MFD

Capacity 3,645 persons (see attached calculations)

Exit width available 89.5 feet (see attached map and calculations)

Live on King St attendees will enter the event zone via the east end of the 100 block of King St. Attendees will walk through two shoots assembled out of bike rack that will be moveable in case of emergency to allow easy entry/exit to/from the event zone. While walking through the entry shoots attendees will be counted in by digital tally devises where they will also be visually inspected for obvious restricted carry-in materials (alcohol, weapons, dangerous objects, etc). Signage will be placed at the entrance informing attendees of restrictions. If or when capacity is reached all members of security will be notified and the entry shoots will be closed by security. As attendees exit a "one-in one-out" policy will take effect.

Exits exist at the entrance, flanking the stage at west end of the 100 block of King St, and on to S Webster St via the parking lot enclosed by King and S Webster Streets. Attendees will be counted out by digital tally devises and numbers will be reported to the entrance in order to allow more attendees into the event zone if/when capacity is reached.

All businesses on the north side of King street will be accessible via a eight foot path starting at the northwest end of the 100 block of King St. The path will be constructed out of segments of bike rack designed for this purpose. There will be no less than two security members patrolling this path instructing business patrons that they can use the path to enter and exit the businesses, but are not allowed to congregate within the eight foot path.

Businesses located on the south side of King St are either closed or have alternative ingress/egress onto surrounding streets. The only business on the south side of the 100 block of King St open during the amplified event is Madison's and they will have an unblocked exit onto King St with flow directed east towards the outer loop.

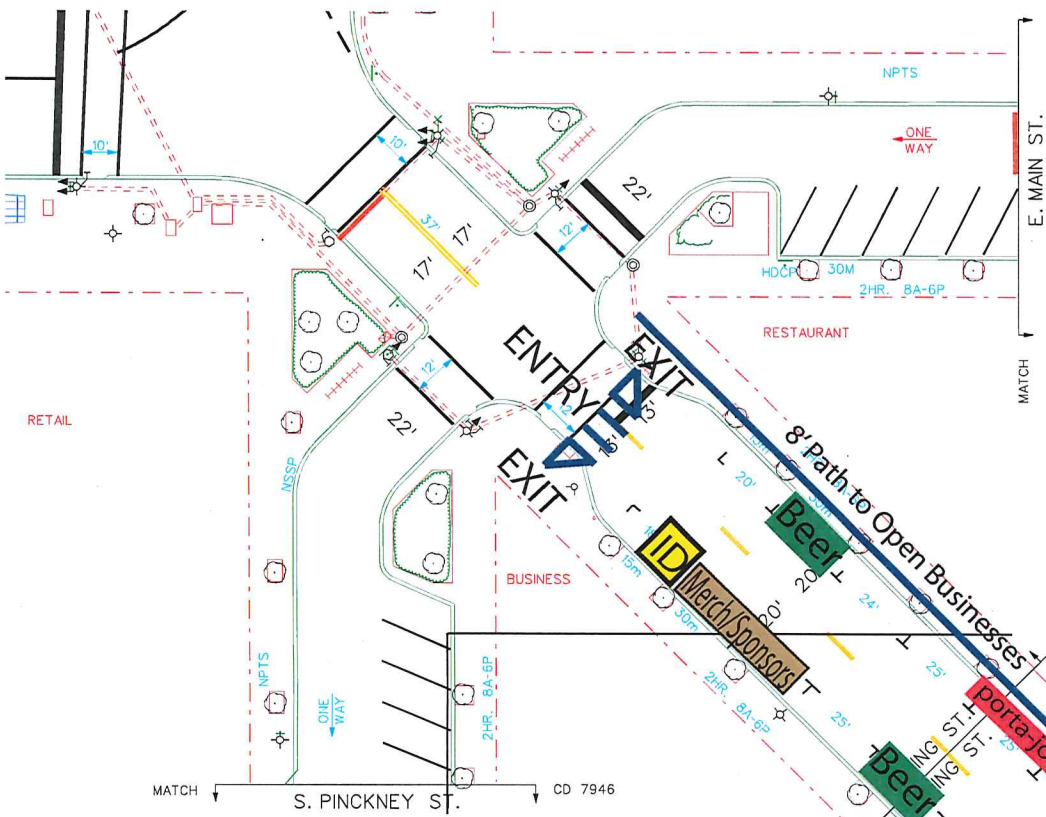
Three dedicated exits are located near the area expected to be the most densely populated on the west end of King St near the stage area. The crowd will be allowed to spill over into the parking lot on the northeast end of the 100 block of King St. Stage barricade security will be able to

pull any at risk attendees from the crowd and escort them to exits or to medical personal as needed.

The 100 block of King St will be closed from 8am on the event day and will reopen to street traffic by 1am the night of event. In the event of crowds congregating outside the event at the intersection of King St, E Main and S Pickney through road traffic will be restricted at the intersection of E Main and S Webster St. Event security will direct E Main St and Tenny parking lot traffic towards the outer loop at E Main and S Webster. Access to the Tenny lot will not be impaired at any time and security will be instructed to direct users away from the event and crowds. Similarly traffic attempting to enter King St from the inner square will be directed towards E Washington St. Crowds attempting to congregate at the east end of the 100 block of King St and along S Webster will be encouraged to enter through the designated event entrance, to keep moving, and to remain on the sidewalks.

In the event of an emergency situation entertainment sound will be cut and attendees will be addressed via the PA by senior event or emergency personal at the front of house (FOH) location. Safety and exit plan announcements before each act can also be made at this same FOH location or by DJ located atop the Majestic Marquee.

General layout, security layout and capacity/exit layout are attached.



Street Capacity Estimates

King Street (77.75'x66.5'+58.5'x165.75')	14,866.75
Parking Lot (55'x70'+(28'x40')/2)	4,410.00
	<u>19,276.75 gross square feet</u>

19,276.75-1048 = 18,228.75 usable square feet
 /5 square feet per person
3,645 max capacity

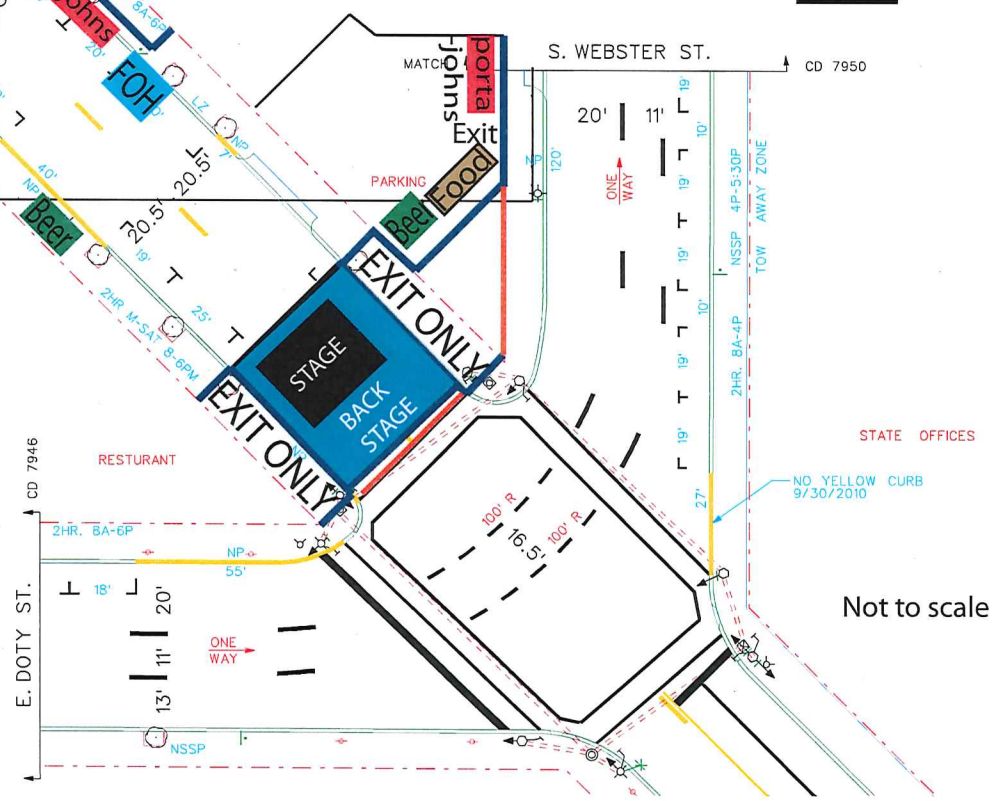
Exit Width = Capacity x .15in = 546.75" = 45.56' required

Entry To 100 block via capital Square	58.5'
Exit from parking lot to S Webster	20'
Exits to outer loop flanking stage	16'
Total Exit Width Available	<u>94.50'</u>

- █ Bike Rack
- █ Road Closure Barrier
- █ Stage Barricade

Unusable Area Estimates

Front of House (10'x10')	100
ID Station (10'x10')	100
Porta-Johns 12(3x3)	108
Canned Beer Bars 2(10x10)	200
Beer Caddies 2(12x15)	360
Food Carts 2(8x5)	80
Misc (trees, pay stations, meters)	100
	<u>1,048 unuseable square feet</u>



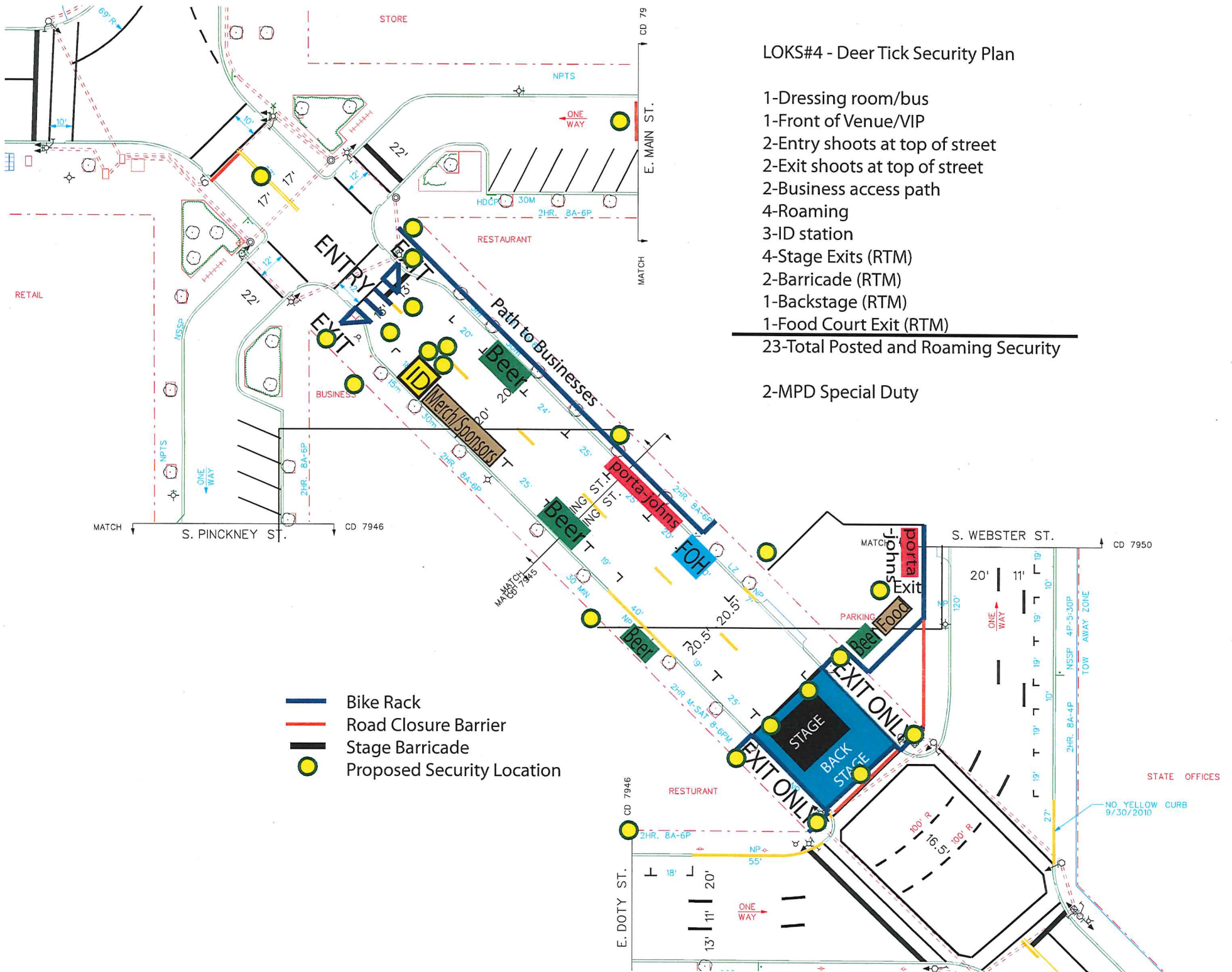
Not to scale

30pA

LOKS#4 - Deer Tick Security Plan

- 1-Dressing room/bus
 - 1-Front of Venue/VIP
 - 2-Entry shoots at top of street
 - 2-Exit shoots at top of street
 - 2-Business access path
 - 4-Roaming
 - 3-ID station
 - 4-Stage Exits (RTM)
 - 2-Barricade (RTM)
 - 1-Backstage (RTM)
 - 1-Food Court Exit (RTM)
-
- 23-Total Posted and Roaming Security

2-MPD Special Duty



40FA