



Madison, Wisconsin

# CITY OF MADISON

## CITY ENGINEERING DIVISION

### DEPARTMENT OF PUBLIC WORKS

# PLAN OF PROPOSED IMPROVEMENT

## ROBIN GREENWAY RESTORATION

PUBLIC IMPROVEMENT PROJECT APPROVED

APPROVED DATE

BY THE COMMON COUNCIL OF MADISON, WISCONSIN

PUBLIC IMPROVEMENT DESIGN APPROVED BY:

City Engineer

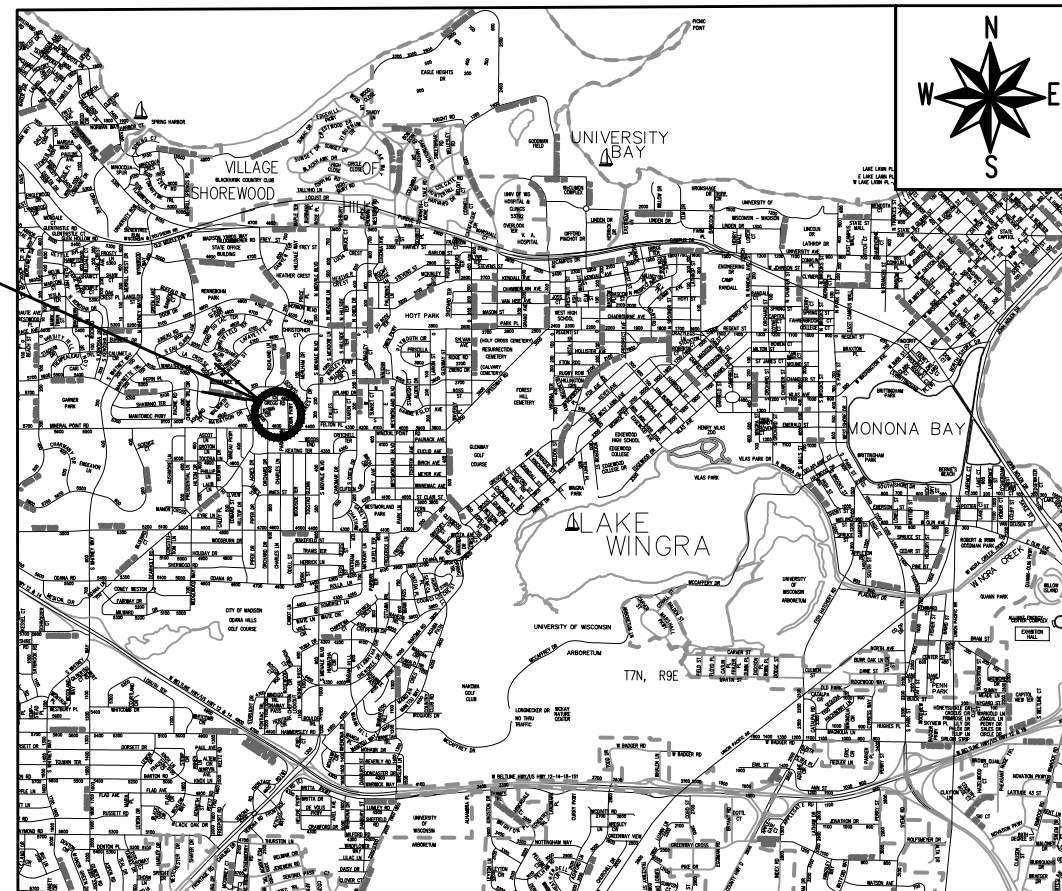
Date

#### INDEX OF SHEETS

|              |                            |
|--------------|----------------------------|
| SHEET NO. 1  | COVER SHEET                |
| SHEET NO. L1 | CLEARING PLAN - NORTH AREA |
| SHEET NO. L2 | CLEARING PLAN - SOUTH AREA |
| SHEET NO. L3 | SEEDING PLAN - NORTH AREA  |
| SHEET NO. L4 | SEEDING PLAN - SOUTH AREA  |
| SHEET NO. L5 | PLANTING PLAN - NORTH AREA |
| SHEET NO. L6 | PLANTING PLAN - SOUTH AREA |

CITY PROJECT NO. 14412  
CONTRACT NO. 9334

PROJECT LOCATION



#### UTILITY CONTACTS

MG&E (Gas): Roger Ahles 608-252-5682  
MG&E (Elec): Keo Chansavath 608-252-4577  
AT&T: Matthew Vachalik 262-707-6216

**PRELIMINARY NOT FOR CONSTRUCTION**

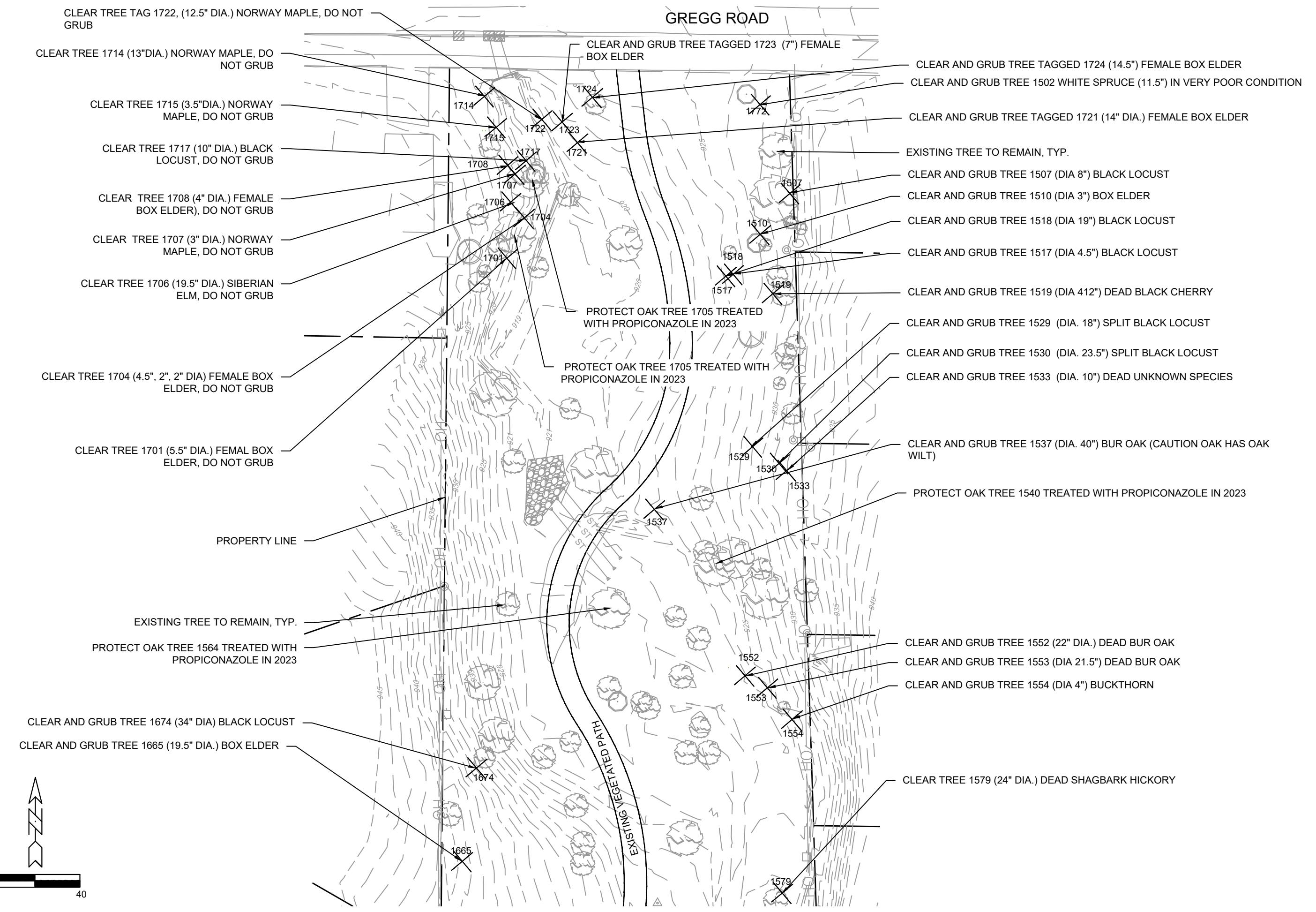
PLOT SCALE: 1:1\_XREF

PLOT NAME: ---

REV. DATE: 9/12/2023 11:56 AM

ORIGINATOR: CITY\_OF\_MADISON

GREGG ROAD



CLEAR TREE TAG 1722, (12.5" DIA.) NORWAY MAPLE, DO NOT GRUB

CLEAR TREE 1714 (13"DIA.) NORWAY MAPLE, DO NOT GRUB

CLEAR TREE 1715 (3.5"DIA.) NORWAY MAPLE, DO NOT GRUB

CLEAR TREE 1717 (10" DIA.) BLACK LOCUST, DO NOT GRUB

CLEAR TREE 1708 (4" DIA.) FEMALE BOX ELDER, DO NOT GRUB

CLEAR TREE 1707 (3" DIA.) NORWAY MAPLE, DO NOT GRUB

CLEAR TREE 1706 (19.5" DIA.) SIBERIAN ELM, DO NOT GRUB

CLEAR TREE 1704 (4.5", 2", 2" DIA) FEMALE BOX ELDER, DO NOT GRUB

CLEAR TREE 1701 (5.5" DIA.) FEMAL BOX ELDER, DO NOT GRUB

PROPERTY LINE

EXISTING TREE TO REMAIN, TYP.

PROTECT OAK TREE 1564 TREATED WITH PROPICONAZOLE IN 2023

CLEAR AND GRUB TREE 1674 (34" DIA) BLACK LOCUST

CLEAR AND GRUB TREE 1665 (19.5" DIA.) BOX ELDER

CLEAR AND GRUB TREE TAGGED 1723 (7") FEMALE BOX ELDER

PROTECT OAK TREE 1705 TREATED WITH PROPICONAZOLE IN 2023

PROTECT OAK TREE 1705 TREATED WITH PROPICONAZOLE IN 2023

1537

EXISTING VEGETATIVE PATH

CLEAR AND GRUB TREE TAGGED 1724 (14.5") FEMALE BOX ELDER

CLEAR AND GRUB TREE 1502 WHITE SPRUCE (11.5") IN VERY POOR CONDITION

CLEAR AND GRUB TREE TAGGED 1721 (14" DIA.) FEMALE BOX ELDER

EXISTING TREE TO REMAIN, TYP.

CLEAR AND GRUB TREE 1507 (DIA 8") BLACK LOCUST

CLEAR AND GRUB TREE 1510 (DIA 3") BOX ELDER

CLEAR AND GRUB TREE 1518 (DIA 19") BLACK LOCUST

CLEAR AND GRUB TREE 1517 (DIA 4.5") BLACK LOCUST

CLEAR AND GRUB TREE 1519 (DIA 412") DEAD BLACK CHERRY

CLEAR AND GRUB TREE 1529 (DIA. 18") SPLIT BLACK LOCUST

CLEAR AND GRUB TREE 1530 (DIA. 23.5") SPLIT BLACK LOCUST

CLEAR AND GRUB TREE 1533 (DIA. 10") DEAD UNKNOWN SPECIES

CLEAR AND GRUB TREE 1537 (DIA. 40") BUR OAK (CAUTION OAK HAS OAK WILT)

PROTECT OAK TREE 1540 TREATED WITH PROPICONAZOLE IN 2023

CLEAR AND GRUB TREE 1552 (22" DIA.) DEAD BUR OAK

CLEAR AND GRUB TREE 1553 (DIA 21.5") DEAD BUR OAK

CLEAR AND GRUB TREE 1554 (DIA 4") BUCKTHORN

CLEAR TREE 1579 (24" DIA.) DEAD SHAGBARK HICKORY

|                  |                         |
|------------------|-------------------------|
| DATE             | BY                      |
| REVISION         |                         |
| Scale            | L1                      |
| Designed By: SCL | Date: 9/12/2023 2:57 PM |
| MARK             | 14412                   |

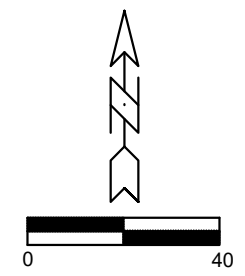
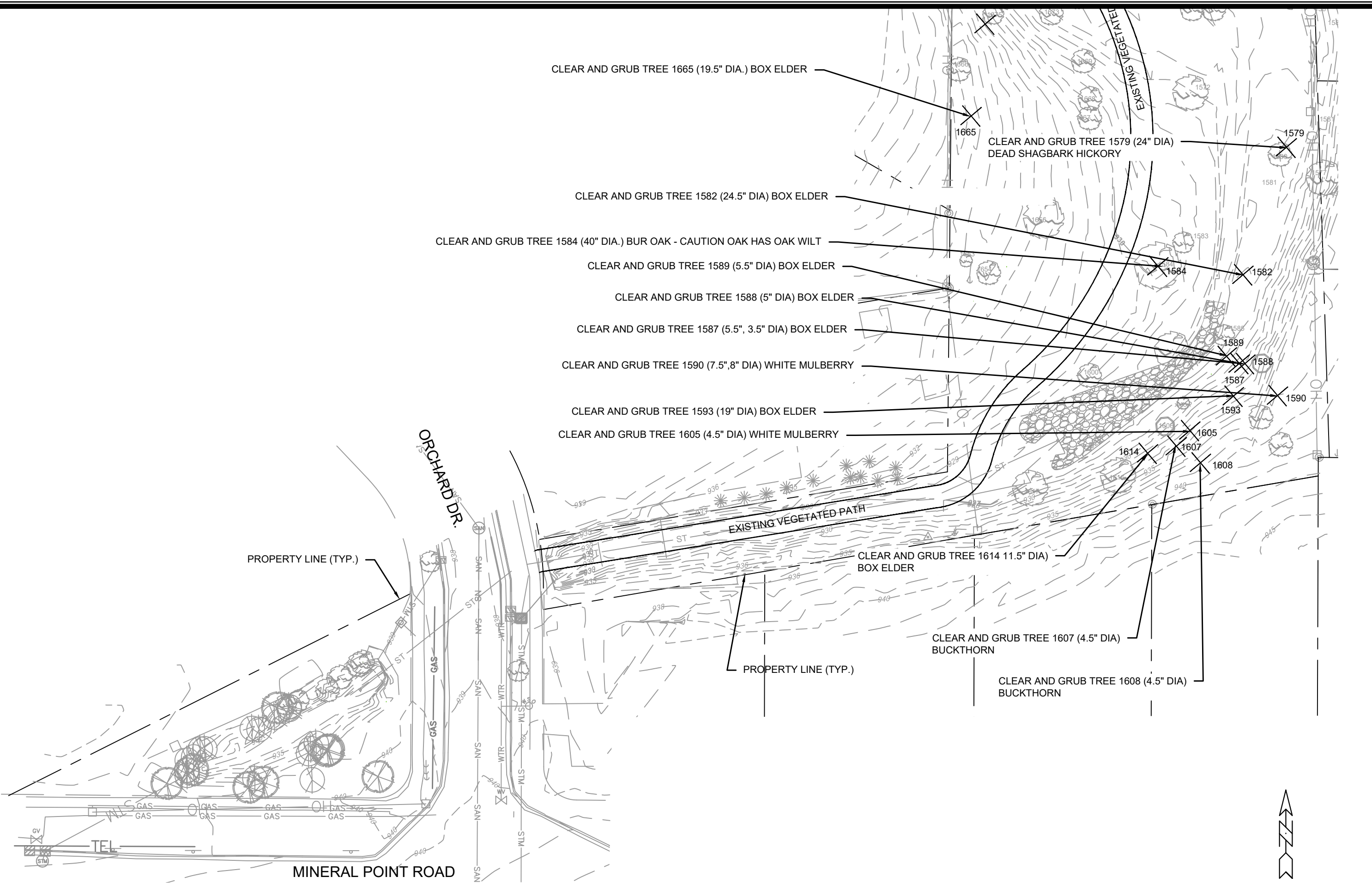
14412  
 ORCHARD DRIVE  
 9333  
 CONTRACT NO.: 14412

CLEARING PLAN  
 ROBIN GREENWAY IMPROVEMENTS  
 M:\DESIGN\Projects\14412\CAD\Sewers\14412 Final Restoration Plan.dwg



14412  
 L1





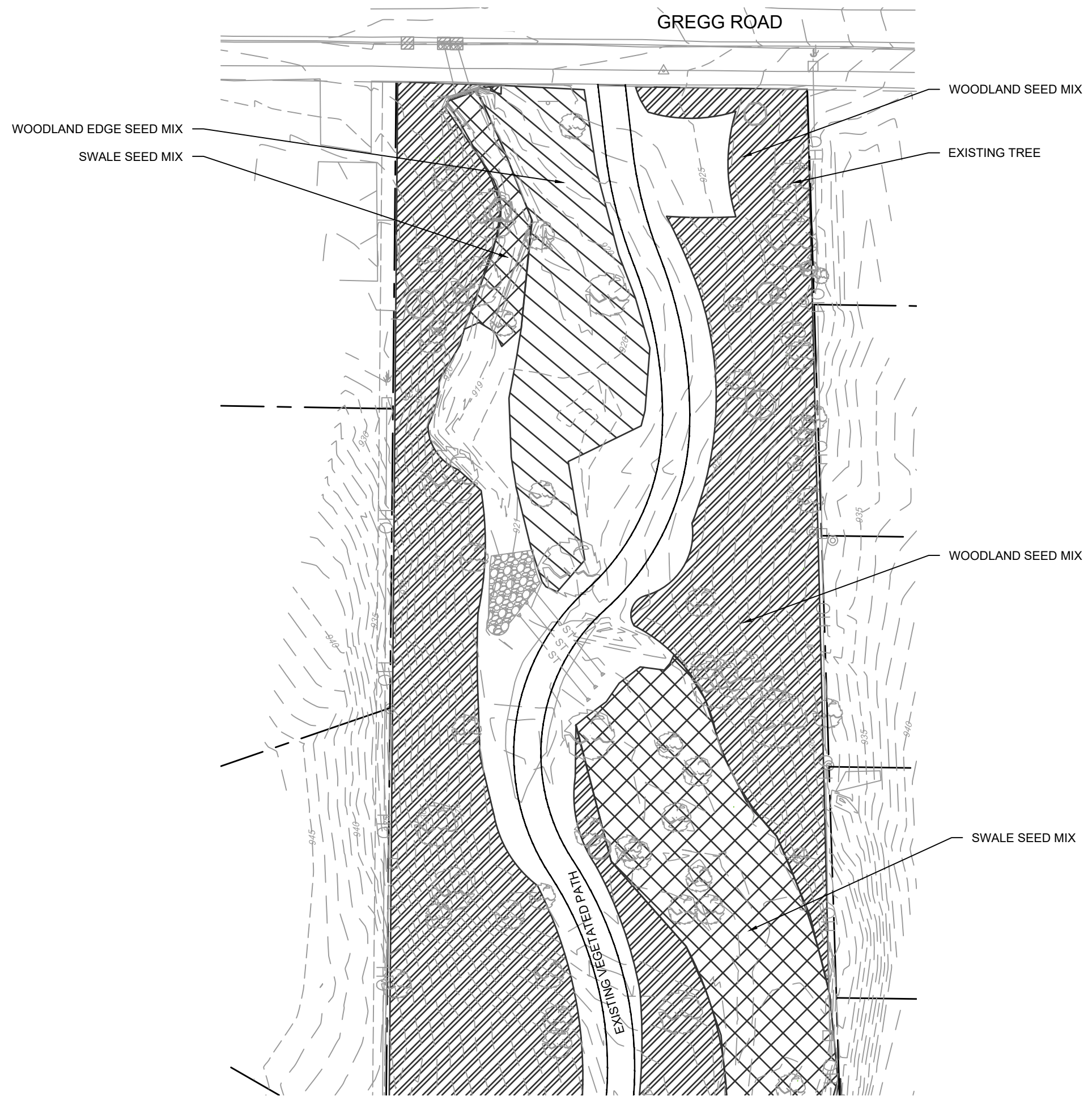
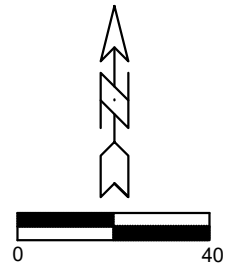
| MARK  | REVISION          | DATE | BY |
|-------|-------------------|------|----|
| 14412 | 9/12/2023 2:57 PM |      |    |

14412  
 ORCHARD DRIVE  
 CONTRACT NO: 9333

CLEARING PLAN (SOUTH AREA)  
 ROBIN GREENWAY IMPROVEMENTS  
M:\DESIGN\Projects\14412\CAD\Sewer\14412 Final Restoration Plan.dwg



14412  
 L2



| MARK  | REVISION | DATE              | BY |
|-------|----------|-------------------|----|
| 14412 | 14412    | 9/12/2023 2:57 PM | L3 |

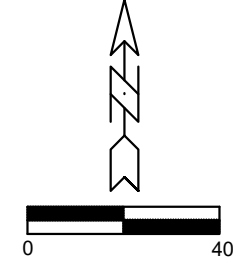
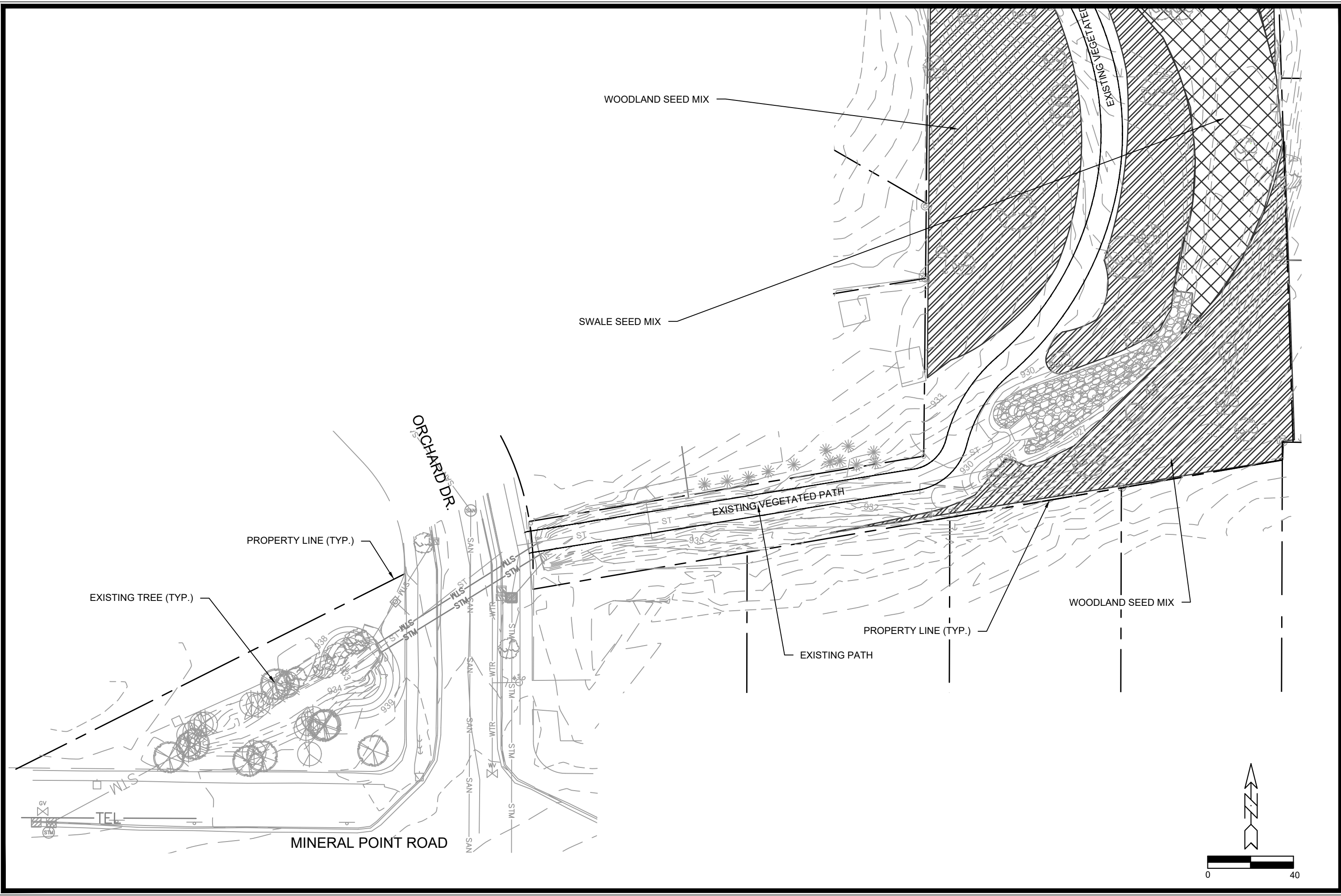
14412  
 ORCHARD DRIVE  
 CONTRACT NO: 9334

SEEDING PLAN (NORTH AREA)  
 ROBIN GREENWAY RESTORATION  
M:\DESIGN\Projects\14412\CAD\Sewers\14412 Final Restoration Plan.dwg



14412  
 L3



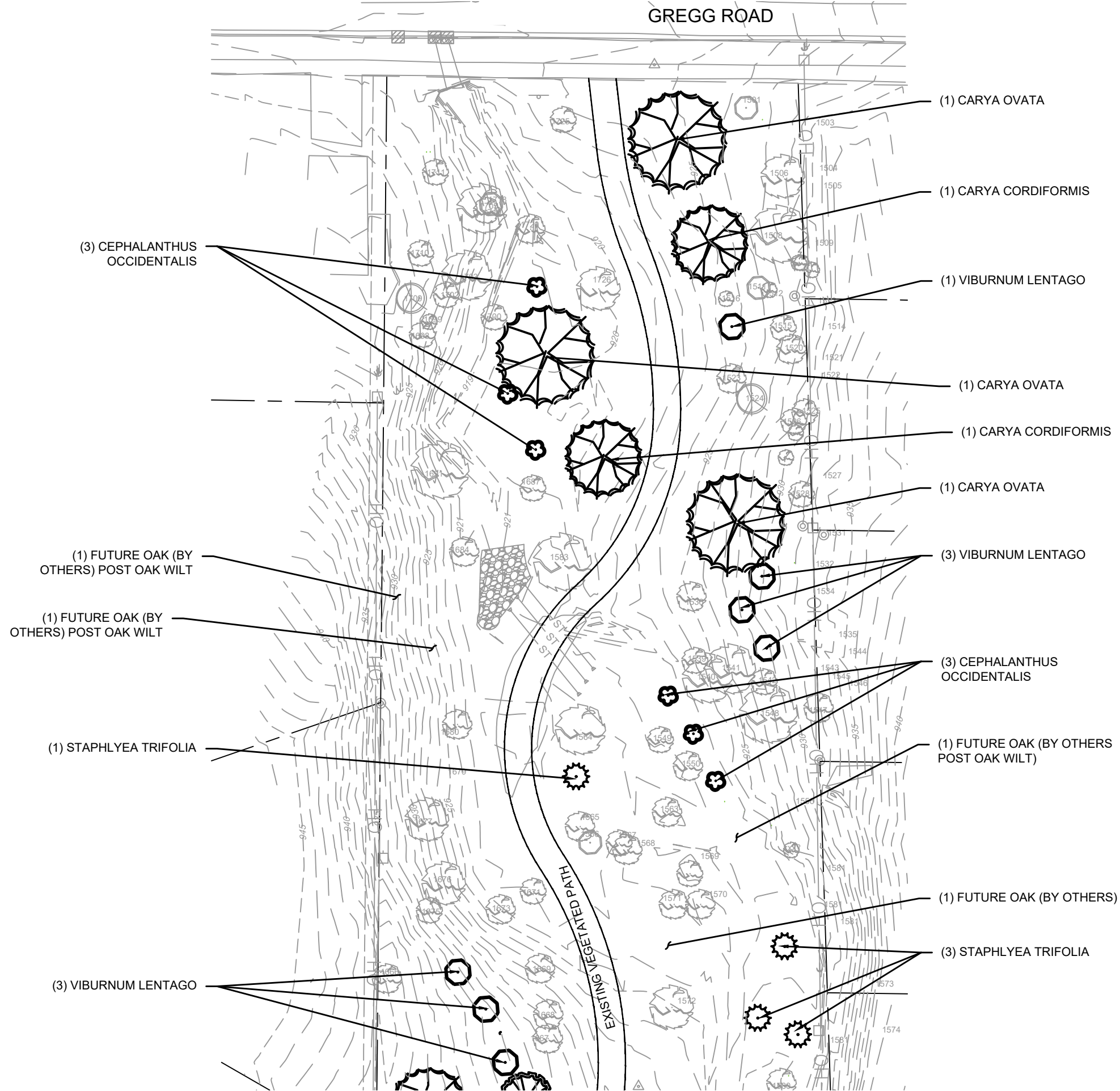
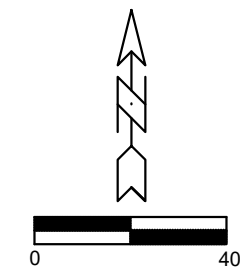


| MARK  | REVISION | DATE              | BY |
|-------|----------|-------------------|----|
| 14412 | 14412    | 9/12/2023 2:57 PM | L4 |

14412  
 ORCHARD DRIVE  
 9334  
 CONTRACT NO:

SEEDING PLAN (SOUTH AREA)  
 ROBIN GREENWAY RESTORATION  
 M:\DESIGN\Projects\14412\CAD\Sewer\14412 Final Restoration Plan.dwg

14412  
 L4



| MARK  | REVISION | DATE              | BY |
|-------|----------|-------------------|----|
| 14412 | 14412    | 9/12/2023 2:57 PM | L5 |

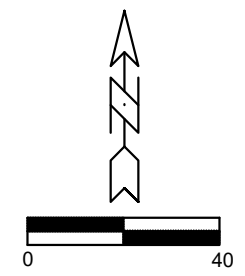
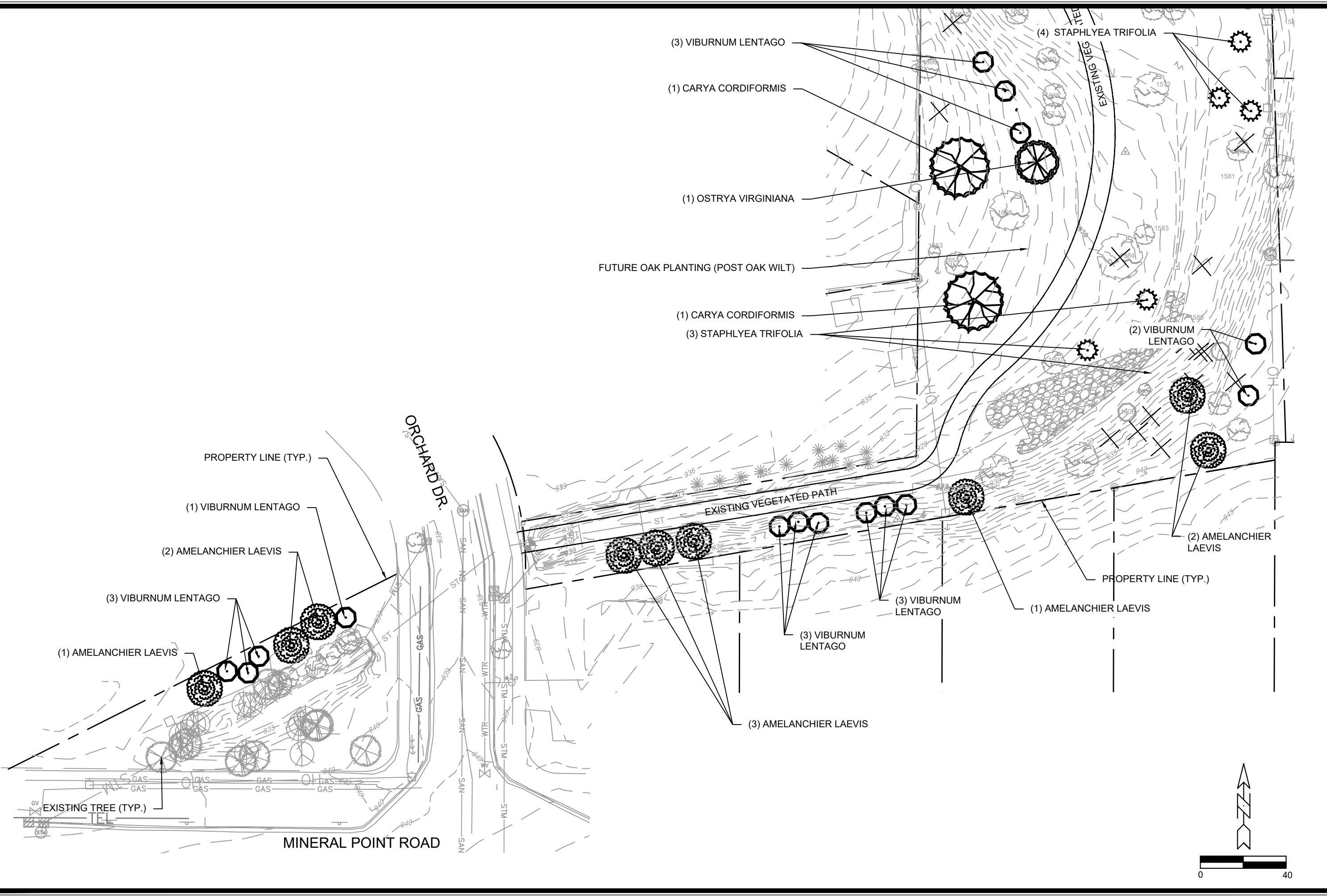
14412  
 ORCHARD DRIVE  
 9334  
 CONTRACT NO:

PLANTING PLAN (NORTH AREA)  
 ROBIN GREENWAY RESTORATION  
 M:\DESIGN\Projects\14412\CAD\Sewer\14412 Final Restoration Plan.dwg



14412  
 L5





| MARK  | REVISION | DATE              | BY |
|-------|----------|-------------------|----|
| 14412 | 14412    | 9/12/2023 2:57 PM | L6 |

14412  
 MADISON, WI  
 CONTRACT NO: 9334

PLANTING PLAN (SOUTH AREA)  
 ROBIN GREENWAY RESTORATION  
M:\DESIGN\Projects\14412\CAD\Drawings\14412 Final Restoration Plan.dwg

14412  
 L6