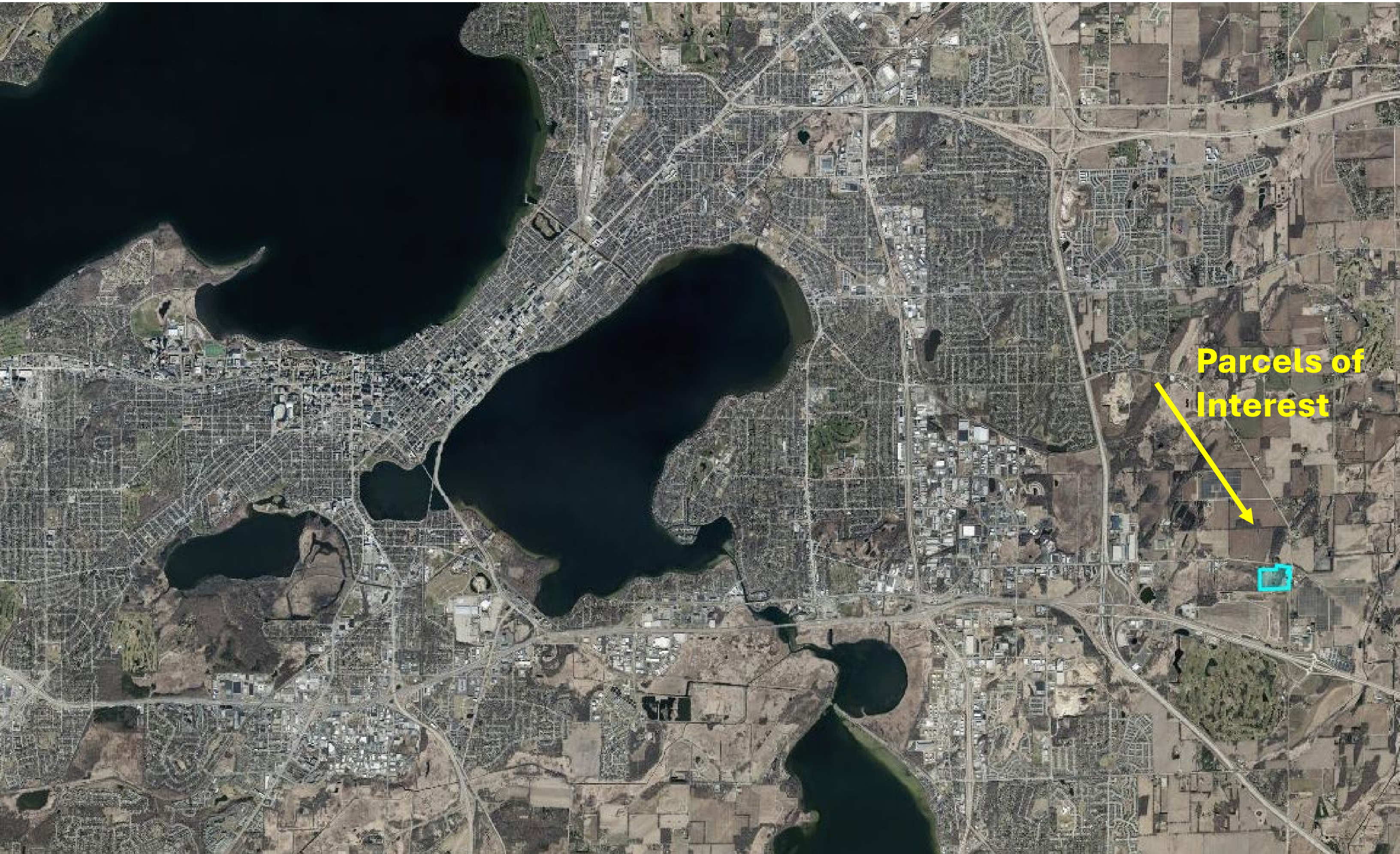


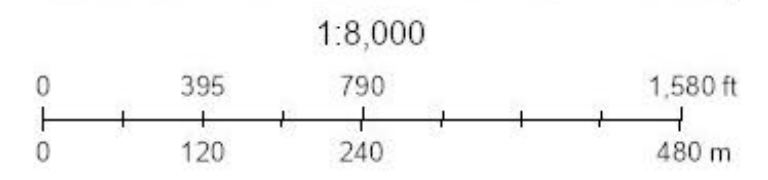
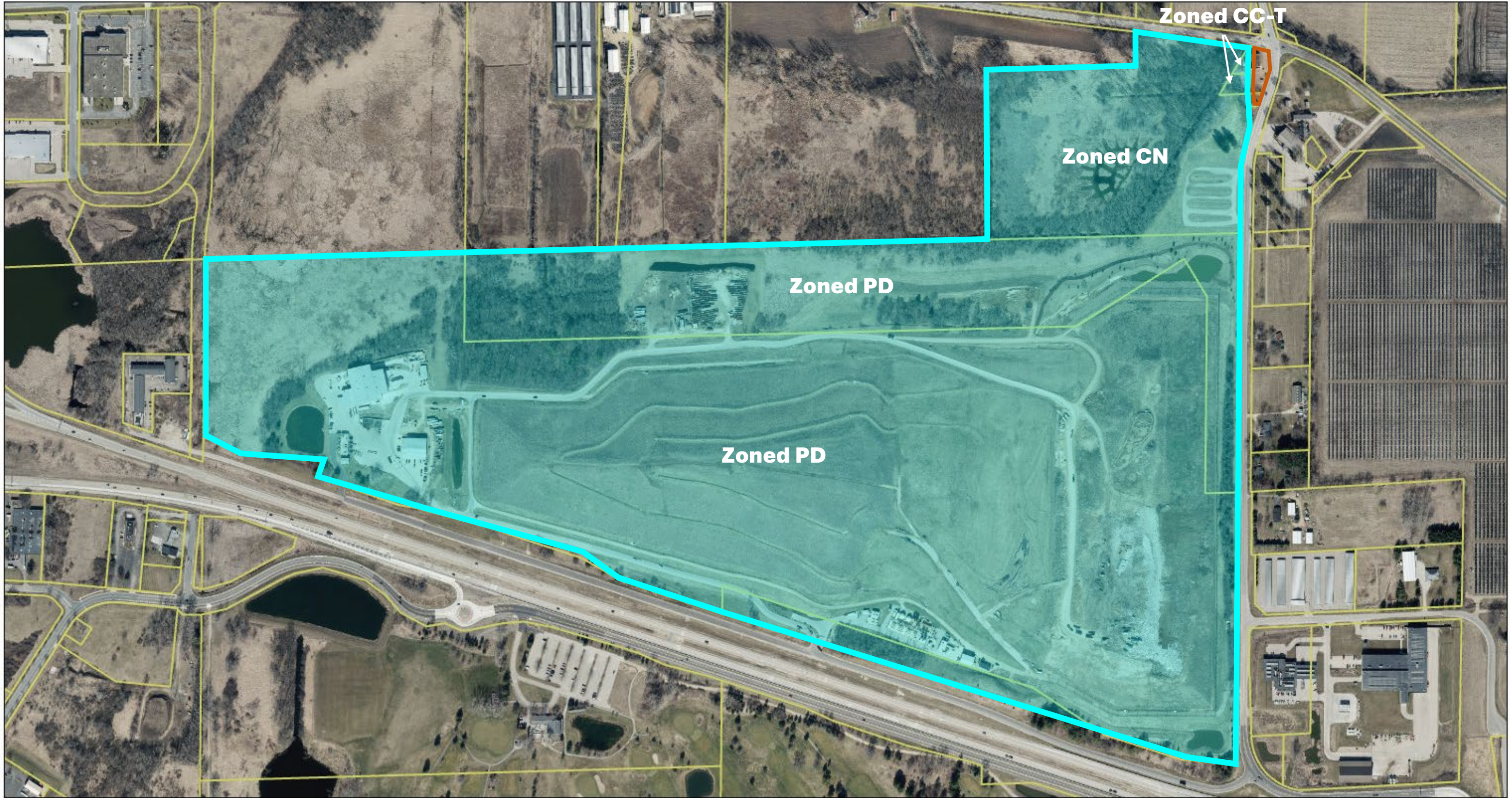
# City of Madison UDC Presentation

Rezoning + Major Alteration

7913, 7901, 7905 E Buckeye Rd.



**Parcels of Interest**



# Rezone + Major Alteration Parcels - Rezone to PD



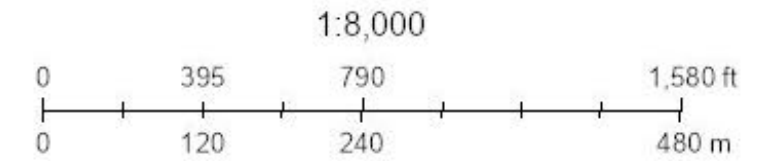
### Larger Parcel

7913 E Buckeye Rd  
071024402035  
CN (conservancy)

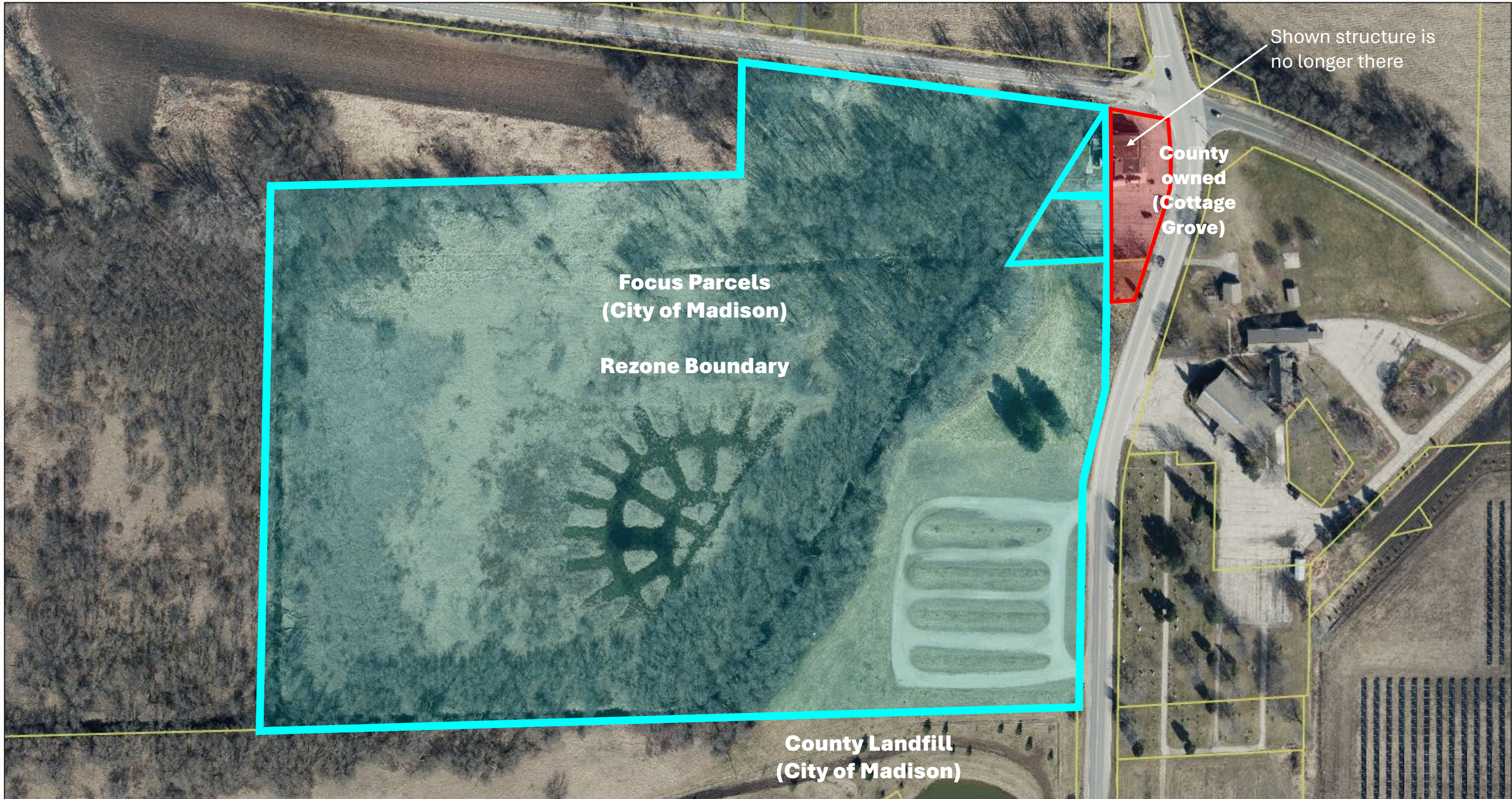
### Minor parcels

7901 E Buckeye Rd  
071024402019  
CC-T

7905 E Buckeye Rd  
071024402027  
CC-T



# Rezone + Major Alteration Parcels Boundary



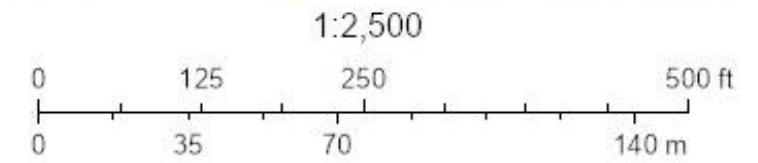
### Larger Parcel

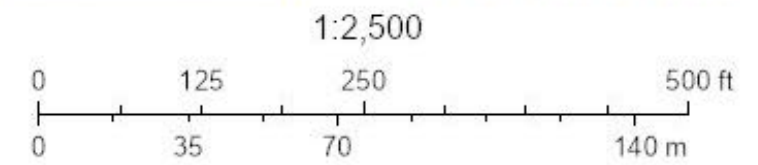
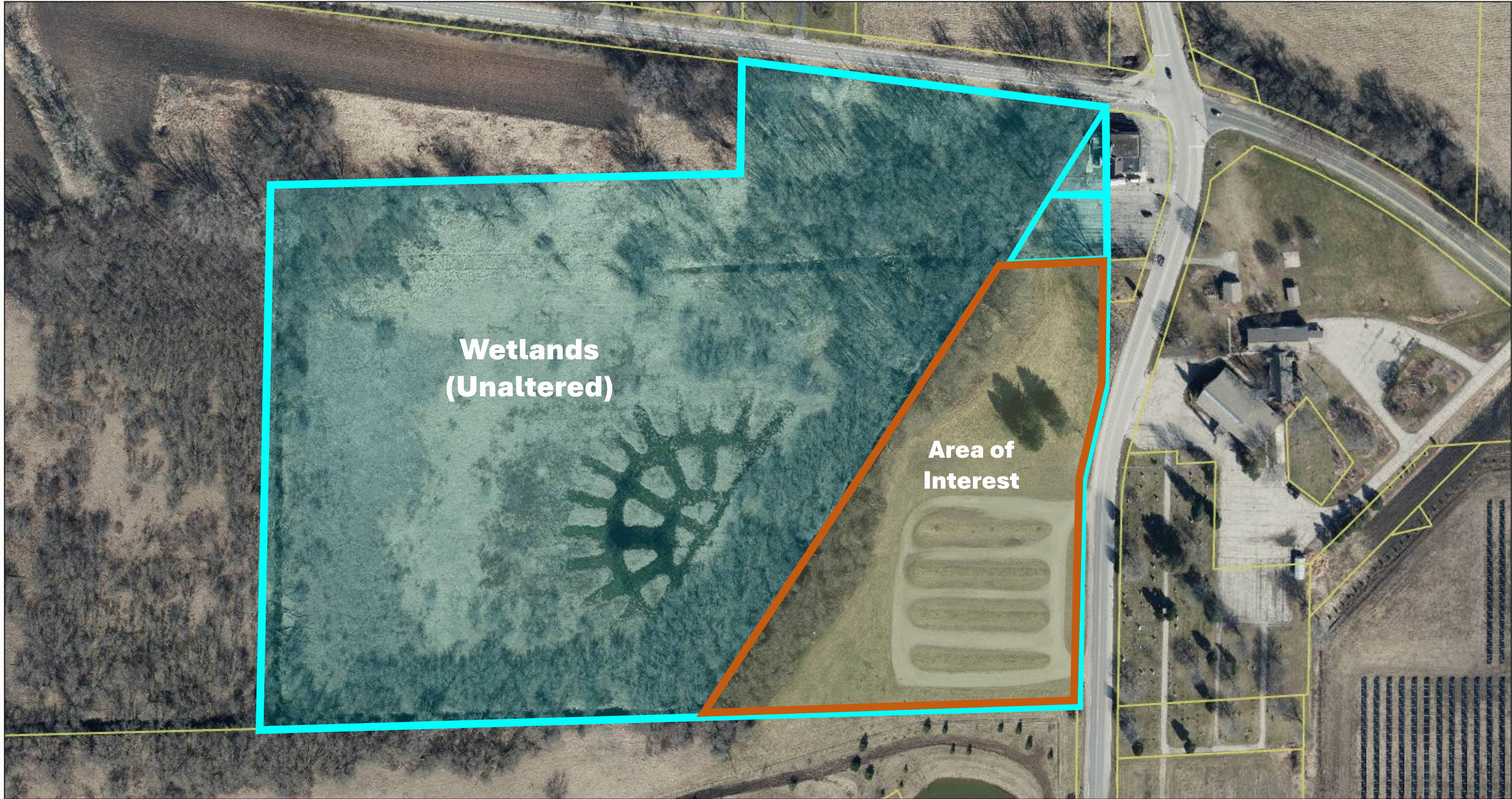
7913 E Buckeye Rd  
071024402035  
CN (conservancy)

### Minor parcels

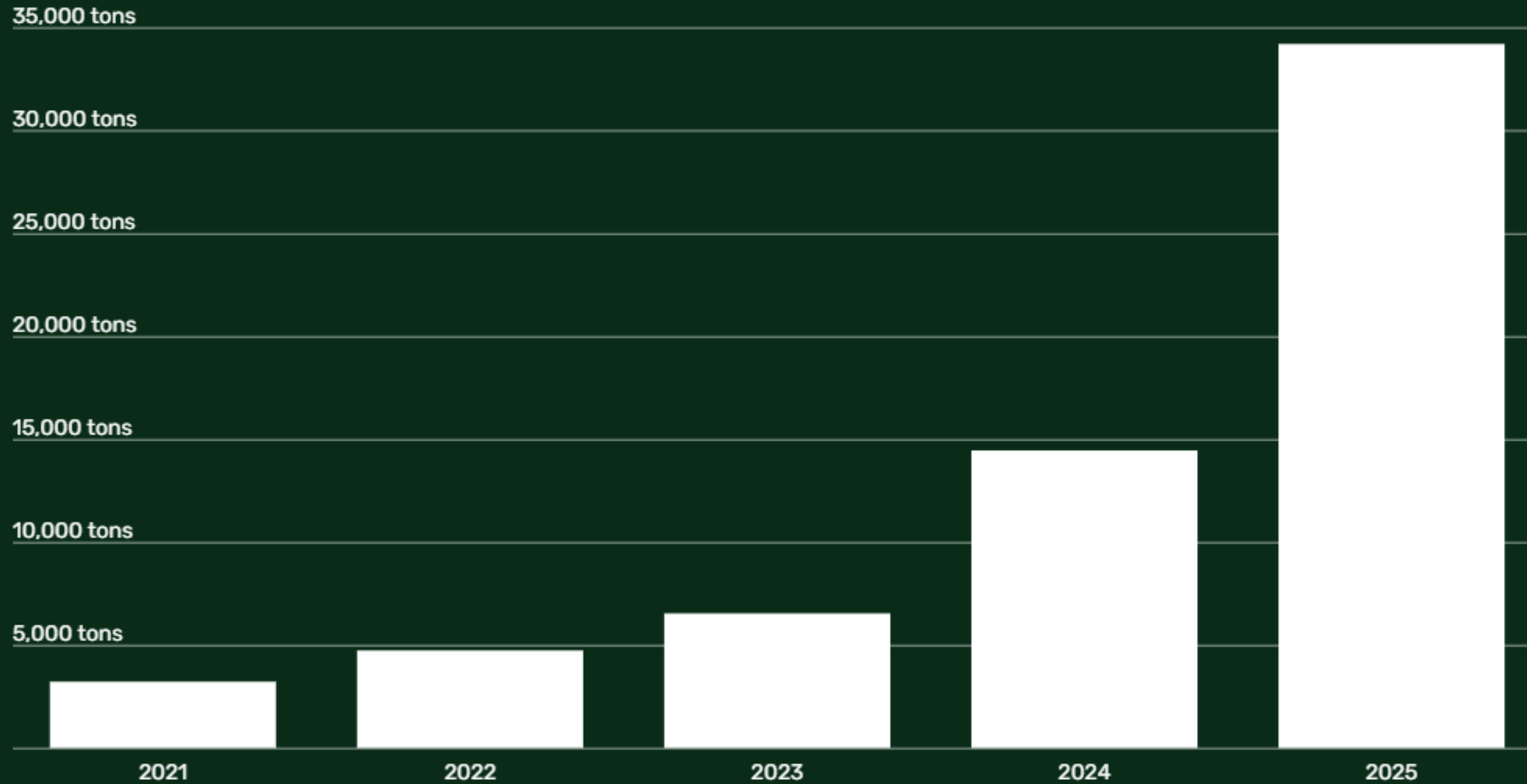
7901 E Buckeye Rd  
071024402019  
CC-T

7905 E Buckeye Rd  
071024402027  
CC-T





## Dane County Annual Shingle Recycling Tonnages



A dramatic increase in the volume of shingles coming to W+R's site for recycling has led W+R to explore re-arranging storage onsite.

Shingle recycling is now the County's largest recycling program.

# Storage to be Relocated



Currently, W+R allows local haulers to store roll-off dumpsters onsite to reduce road miles driven. There are typically 200-250 roll-off stored at a given time. The roll-off containers are currently located on land within the gates of the site and which permitted to accept materials for recycling.

Land immediately to the west is used to accept logs, branches and yard waste for compost and chipping.

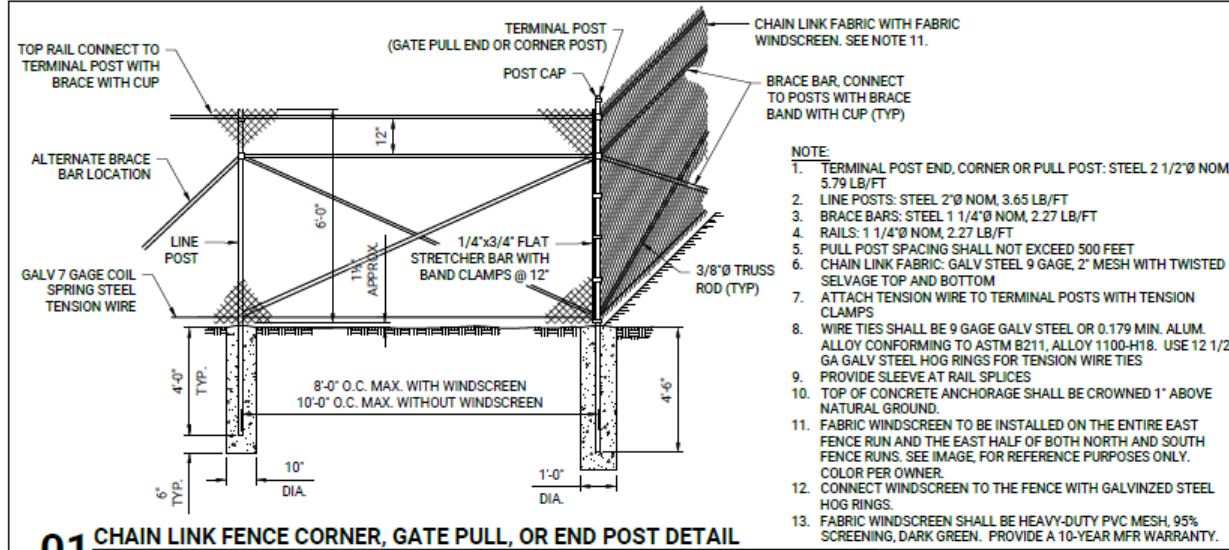
Area: ~80,000 ft<sup>2</sup>



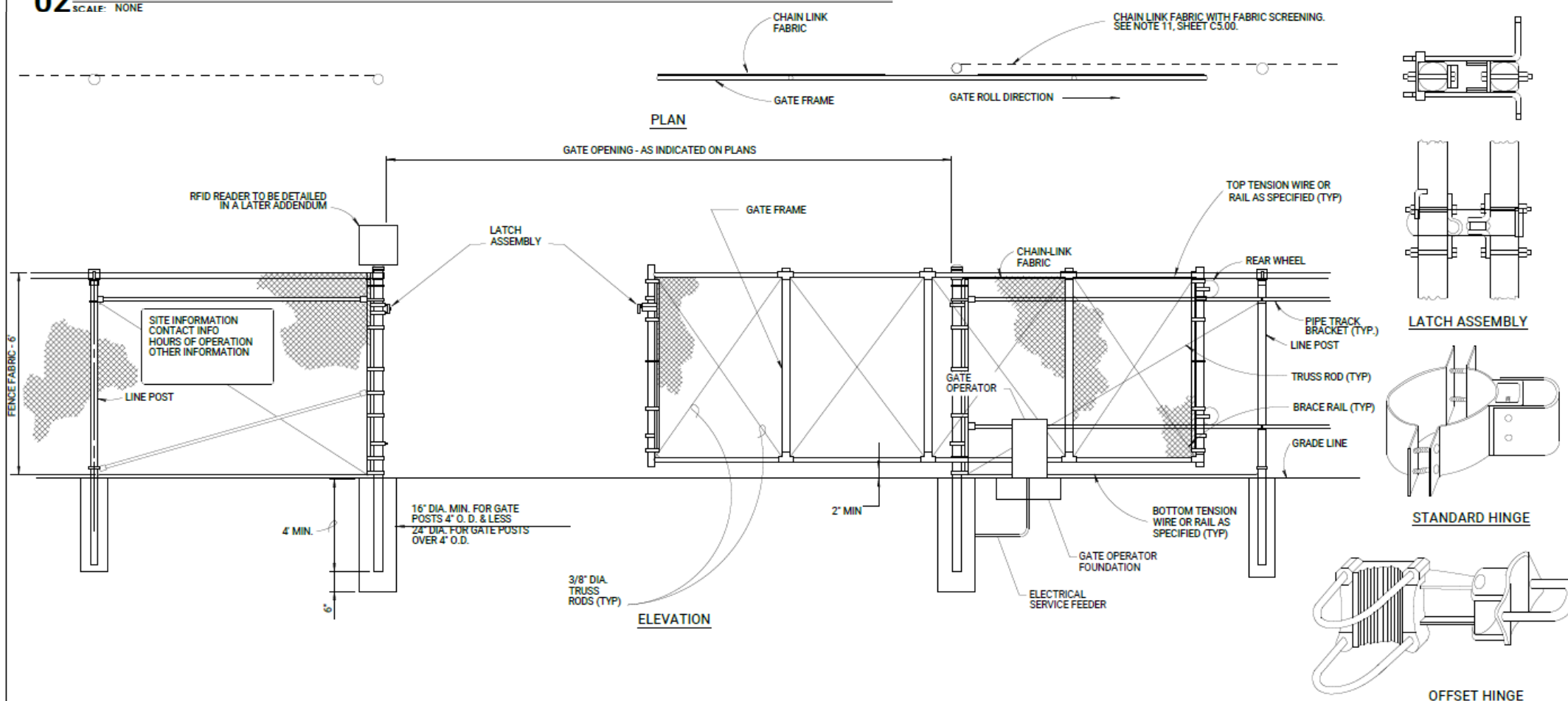
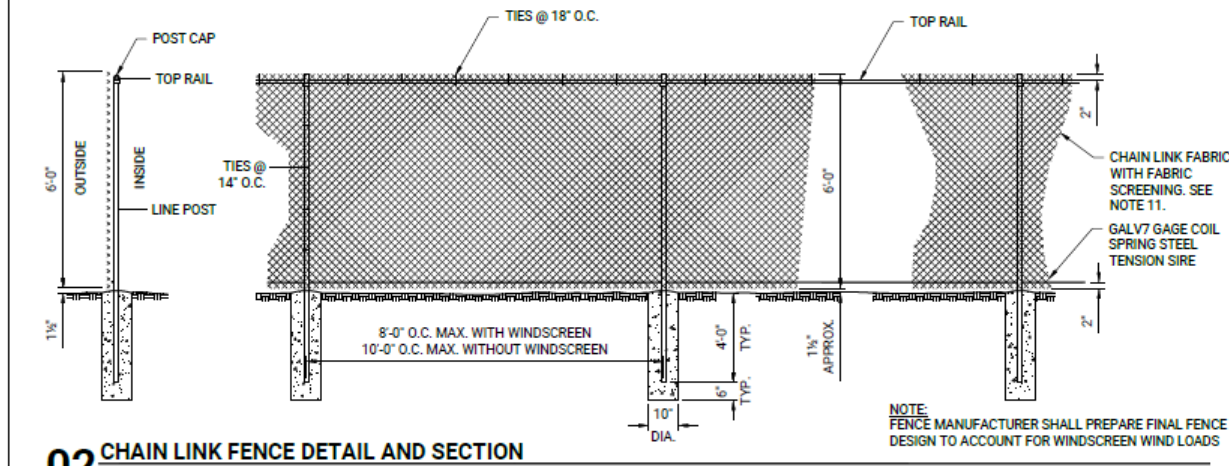




# Fence + Gate Details



**95% Opacity**



**01 MOTORIZED GATE DETAIL**  
SCALE: NONE





# City of Madison UDC Presentation

Contact:

Wyeth Augustine-Marceil

Sustainability + Engagement Coordinator

[augustine-marceil.wyeth@danecounty.gov](mailto:augustine-marceil.wyeth@danecounty.gov)