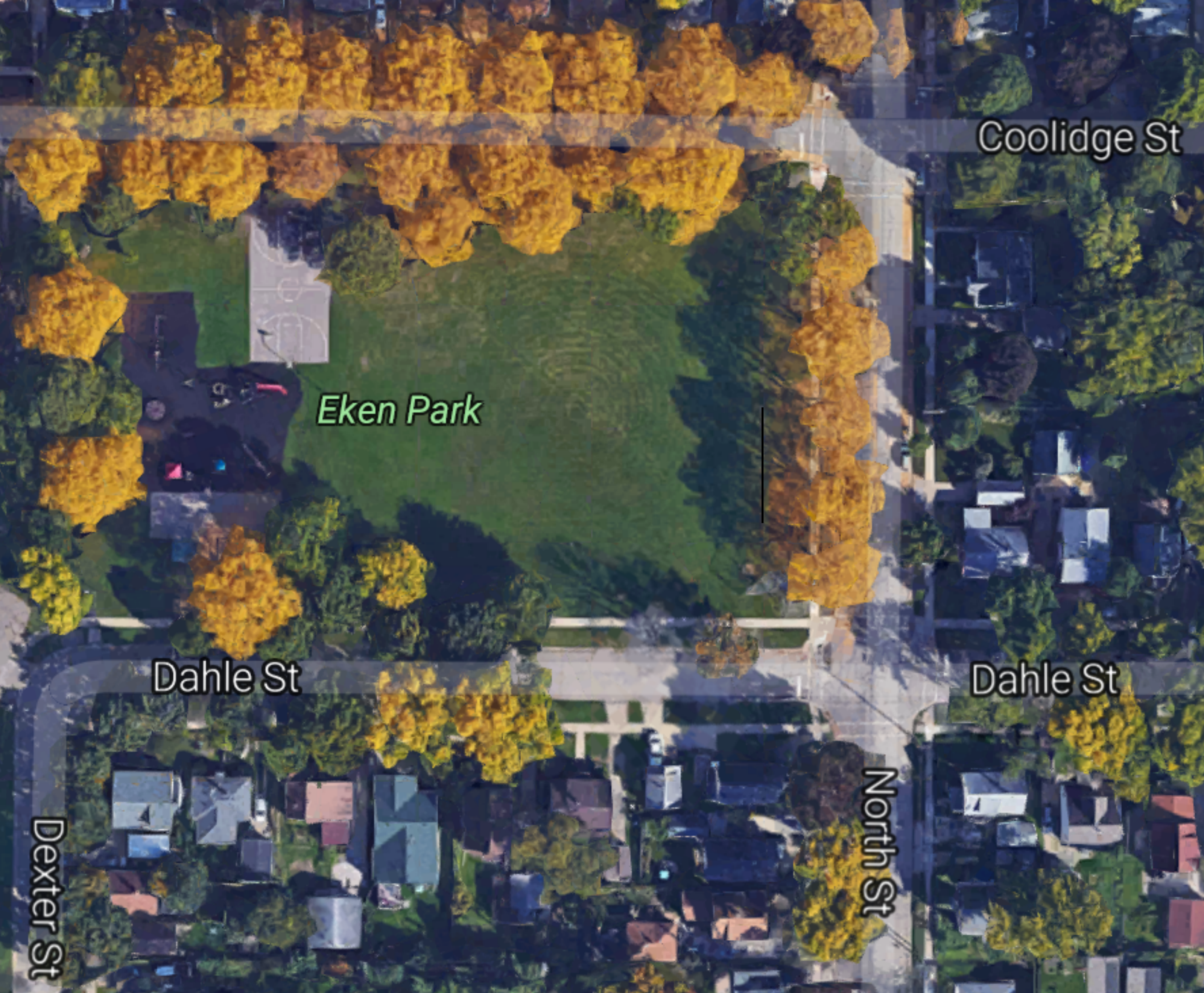


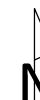
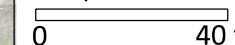


Eken Park Gathering Space | 02.22.2017



- COMMUNITY CONNECTOR**
- HISTORICAL CELEBRATION**
- INVITING FOR ALL NEIGHBORS**
- INFORMATIVE**
- VISABLE**
- ACCESSIBLE**
- ENGAGING**
- COMFORTABLE**
- SAFE**
- VISUALLY-APPEALING**
- EYE-CATCHING**
- PRIVACY**
- PROVIDES SEATING**
- PROVIDES SOME SHADE**
- IMPROVING OUR COMMUNITY**

Graphical Scale



PROJECT:

*EKEN PARK
 NEIGHBORHOOD
 GRANT PROJECT*

*EKEN PARK
 2407 COOLIDGE ST
 MADISON, WI 53704*

Although every effort has been made in preparing these plans and checking them for accuracy, the contractor and subcontractors must check all details and dimensions of their trade and be responsible for the same.

ITEM	DATE
Drawn by:	xx-xx-xxxx
Approved by:	xx-xx-xxxx

PUBLIC WORKS PROJECT #:

####

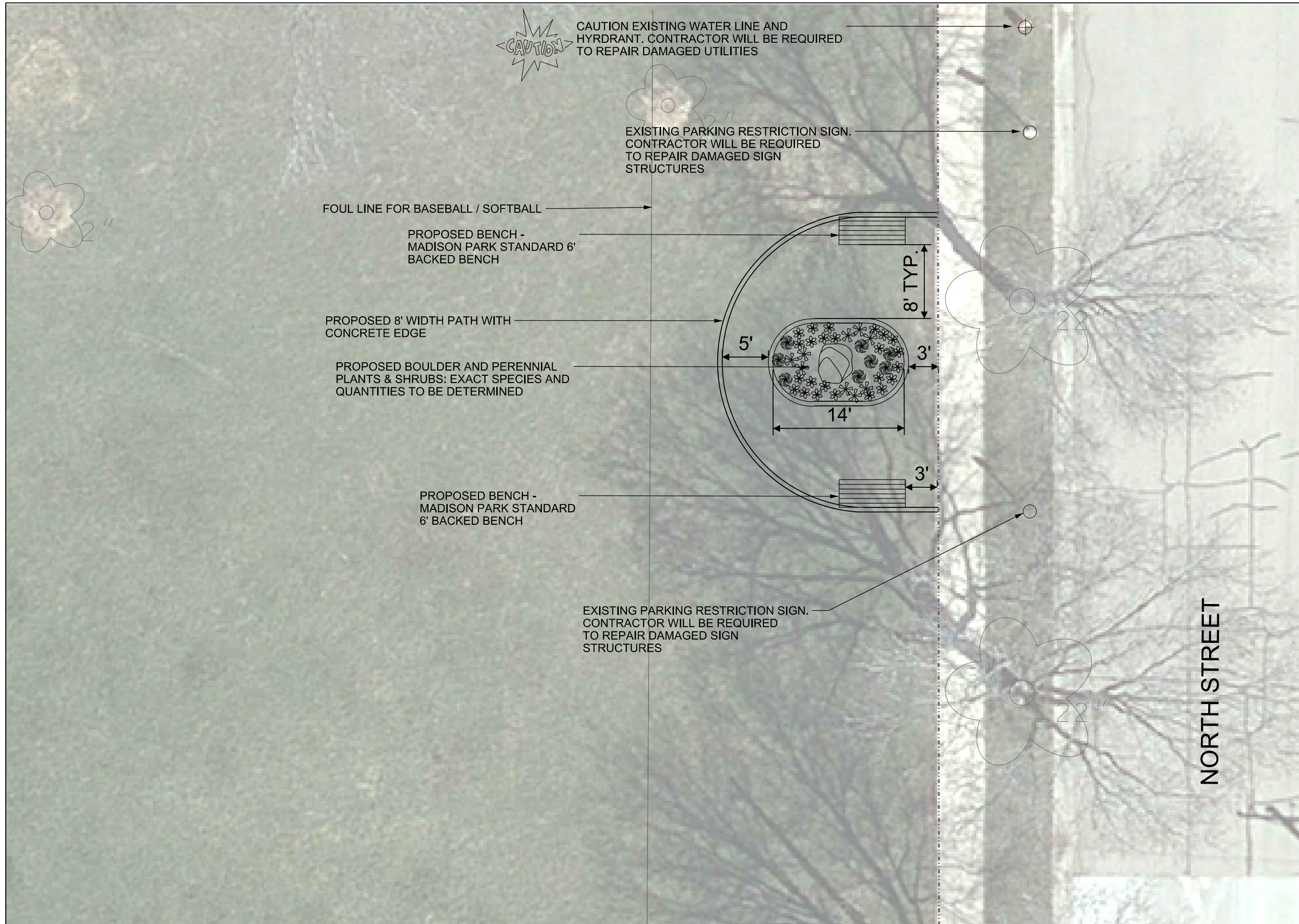
SHEET TITLE:

*PROPOSED
 PARK IMPROVEMENTS*

SHEET NUMBER:

A.1

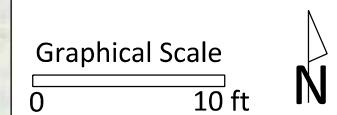




City of Madison
 Department of Public Works
PARKS DIVISION

City-County Building, Suite 104
 210 Martin Luther King, Jr. Blvd.
 Madison, WI 53703

play
**MADISON
 PARKS**



PROJECT:
**EKEN PARK
 HISTORIC
 MARKER**

**EKEN PARK
 2407 COOLIDGE
 MADISON, WI 53704**

Although every effort has been made in preparing these plans and checking them for accuracy, the contractor and subcontractors must check all details and dimensions of their trade and be responsible for the same.

ITEM	DATE
Drawn by:	xx-xx-xxxx
Approved by:	xx-xx-xxxx

PUBLIC WORKS PROJECT #:
####

SHEET TITLE:
**PROPOSED PARK
 SEATING AREA**

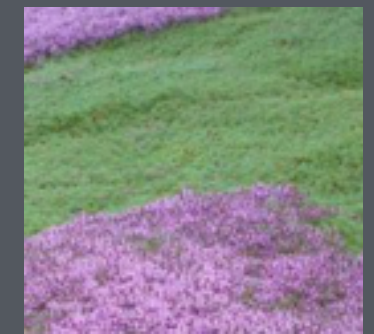
SHEET NUMBER:
A-2

Low Shrubs



#1 Firelight Spiraea

- This shrub bears deep orange foliage and pink flowers in early summer.
- Height: 2-3 feet Width: 3-4 feet . Hardy in USDA zones 4-8.



#2 Woolly Thyme

- Evergreen perennial groundcover with woolly gray leaves and bright pink flowers in summer.
- Height: 2-4 inches
- Width: 8-12 inches
- Hardy in zones 5-8



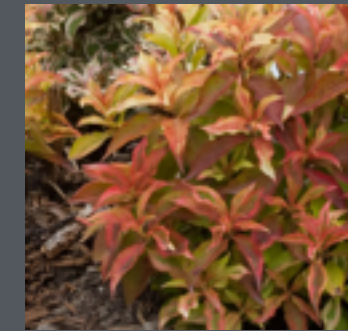
#4 'Blue Star' juniper (*Juniperus squamata* 'Blue Star')

- Zones: 4 to 9
- Conditions: Full sun to partial shade; well-drained soil
- Seasonal bonus: Its blue needles serve as a textural foil throughout the year. The spreading habit of 'Blue Star' is the perfect choice for the front of a border: It stays low (only 16 inches tall), grows very slowly, and stands out in a crowd.



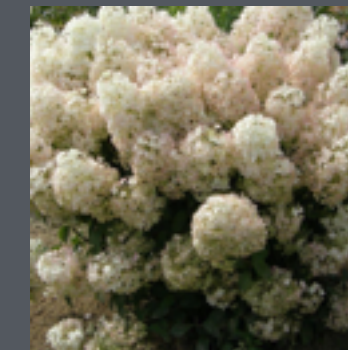
#5 TINY WINE® Physocarpus

- A smaller, extra bushy selection that grows just 3-5' tall
- Flowers bloom all up and down the stems for a showy display in late spring
- Smaller, refined dark bronze-maroon leaves take on rich red tones in fall
- Provides great color for smaller, low maintenance spaces
- Mildew resistant
- Full sun
- Hardiness zones 3 – 7



#6 MY MONET® 'Sunset' Weigela

- Grown mostly for its season-long colorful foliage, variegated green and gold with striking red tones in fall
- Occasionally produces soft rosy pink flowers
- Dwarf size, 1-1 ½' tall, makes this shrub ideal for the front of the border and containers
- Deer resistant
- Full sun
- Hardiness zones 5 – 7



#7 BOBO® Hardy Hydrangea

- Abundant white flowers that turn pink in autumn
- Cold hardy
- Dwarf size, 2 ½ – 3' tall, a good choice for containers and small gardens
- Full sun to part shade
- Hardiness zones 3 – 8

Ground Cover



#8 Pink running pussy-toes

- *Antennaria dioica* 'Rubra'
- Zones: 5 to 9
- Size: 4 inches tall and up to 20 inches wide
- Conditions: Full sun to partial shade; sandy, acidic soil
- Spacing: 8 to 10 inches apart for coverage in two seasons



9 Sessile-leaf bellwort

- *Uvularia sessilifolia* and cvs.
- Zones: 4 to 9
- Size: 8 inches tall and 1 foot wide
- Conditions: Partial to full shade; moist soil
- Spacing: 1 foot apart for coverage in two seasons

Grasses



#11 Feather Reedgrass

Calamagrostis 'Karl Foerster'

Growing Conditions: Full sun and well-drained soil

Size: To 6 feet tall

Zones: 5-9



#12 Fountaingrass

Pennisetum alopecuroides

Growing Conditions: Full sun and well-drained soil

Size: To 5 feet tall

Zones: 5-9



#13 Little Bluestem

Schizachyrium scoparium

Growing Conditions: Full sun and well-drained soil

Size: To 3 feet tall

Zones: 4-9



#14 Switchgrass

Panicum virgatum

Growing Conditions: Full sun or part shade and well-drained soil

Size: To 5 feet tall

Zones: 4-9

Plant This Grass Because: It's good for wildlife, has beautiful fall color, and tolerates partial shade.

Welcome to Eken Park

This area was once farmland owned by the Eken, Stang, and McCormick families. In 1919, near the present-day corner of Packers and Commercial Avenues, the Oscar Mayer Company purchased a vacant meat-packing factory, which became its corporate headquarters. During the 1920s and 1930s, this neighborhood was the site of the Madison Airport, North Street trolley line, and frequent performances by the Ringling Brothers Circus. Built in the 1940s, the prefabricated homes on Myrtle and Coolidge Streets remain an important example of American vernacular architecture.

Eken Park Neighborhood Association, 2017