

**APPLICATION FOR
URBAN DESIGN COMMISSION
REVIEW AND APPROVAL**

AGENDA ITEM # _____
Project # _____

DATE SUBMITTED: April 3, 2007

UDC MEETING DATE: April 11, 2007

Action Requested

- Informational Presentation
 Initial Approval and/or Recommendation
 Final Approval and/or Recommendation

PROJECT ADDRESS: 4000 International Lane

ALDERMANIC DISTRICT: 17

OWNER/DEVELOPER (Partners and/or Principals)

Dane County Regional Airport

4000 International Lane

Madison, Wisconsin 53704

ARCHITECT/DESIGNER/OR AGENT:

Graef, Anhalt, Schloemer & Associates, Inc.

Eppstein Uhen Architects, Inc.

CONTACT PERSON: Jonathan Parker, Eppstein Uhen Architects, Inc.

Address: 222 West Washington Avenue, Suite 650
Madison, Wisconsin 53703

Phone: (608) 442-5350

Fax: (608) 442-6680

E-mail address: jonathanp@eua.com

TYPE OF PROJECT:

(See Section A for:)

- Planned Unit Development (PUD)
 General Development Plan (GDP)
 Specific Implementation Plan (SIP)
 Planned Community Development (PCD)
 General Development Plan (GDP)
 Specific Implementation Plan (SIP)
 Planned Residential Development (PRD)
 New Construction or Exterior Remodeling in an Urban Design District * (A public hearing is required as well as a fee)
 School, Public Building or Space (Fee may be required)
 New Construction or Addition to or Remodeling of a Retail, Hotel or Motel Building Exceeding 40,000 Sq. Ft.
 Planned Commercial Site

(See Section B for:)

- New Construction or Exterior Remodeling in C4 District (Fee required)

(See Section C for:)

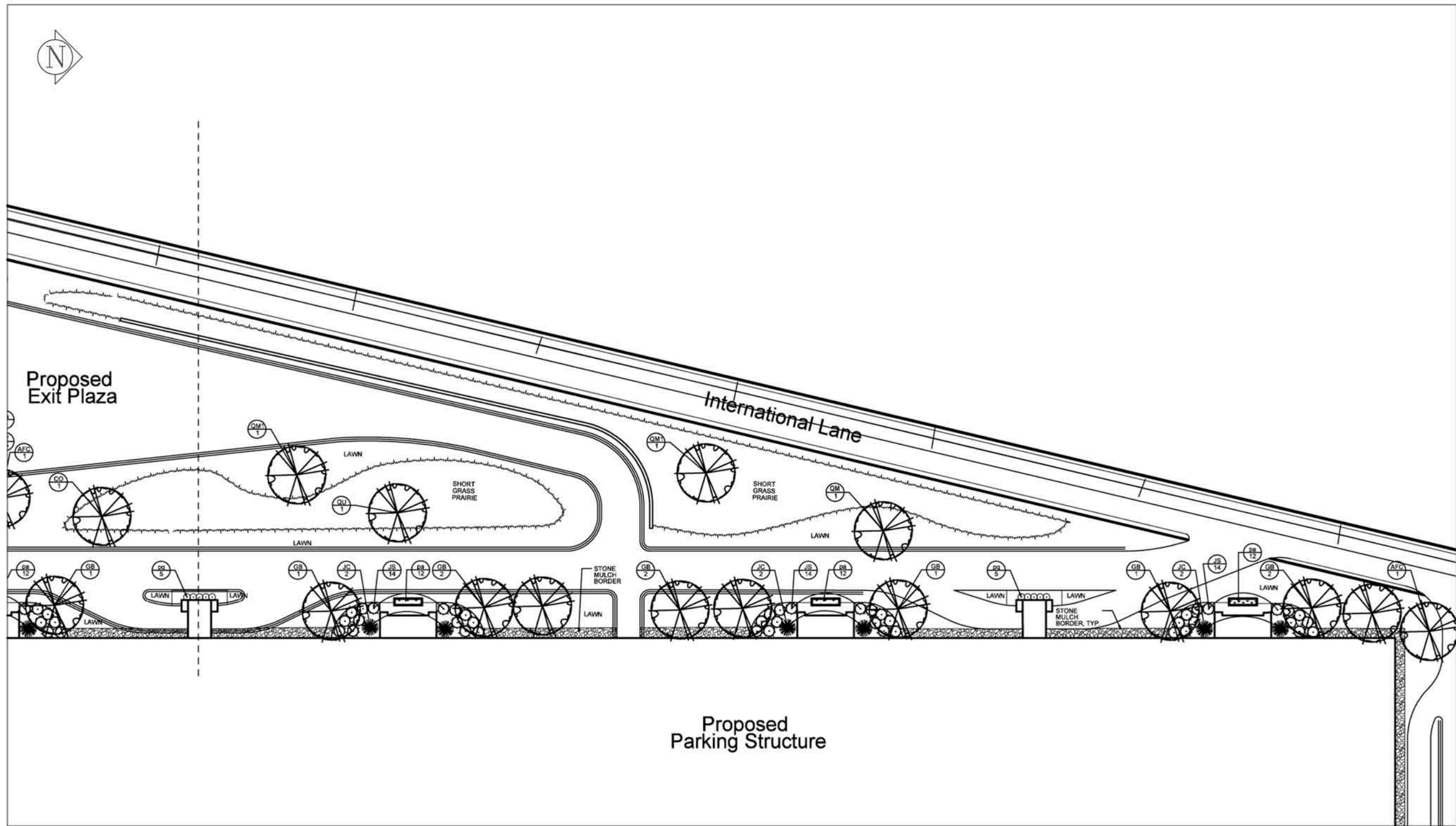
- R.P.S.M. Parking Variance (Fee required)

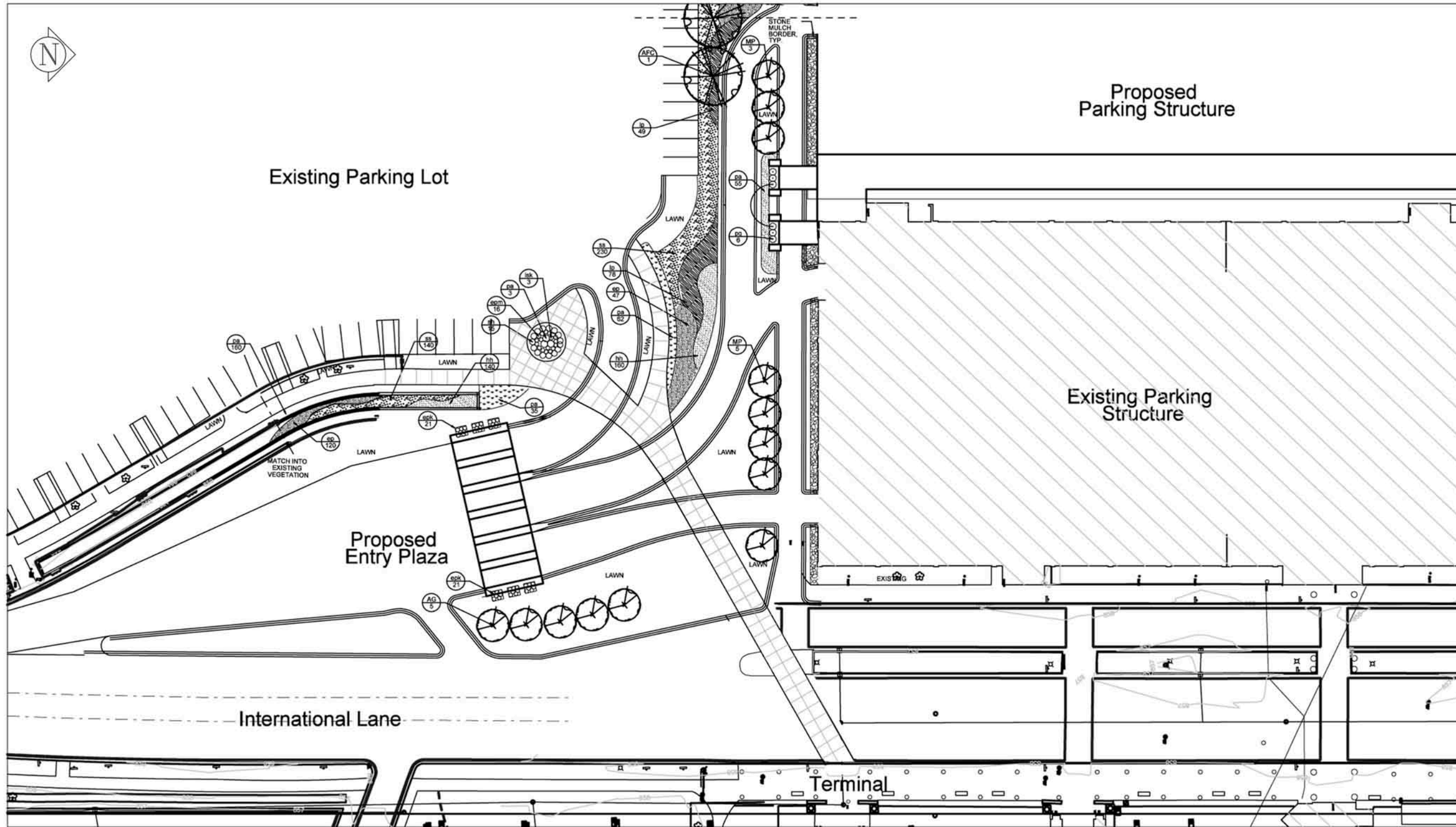
(See Section D for:)

- Comprehensive Design Review* (Fee required)
 Street Graphics Variance* (Fee required)
 Other _____

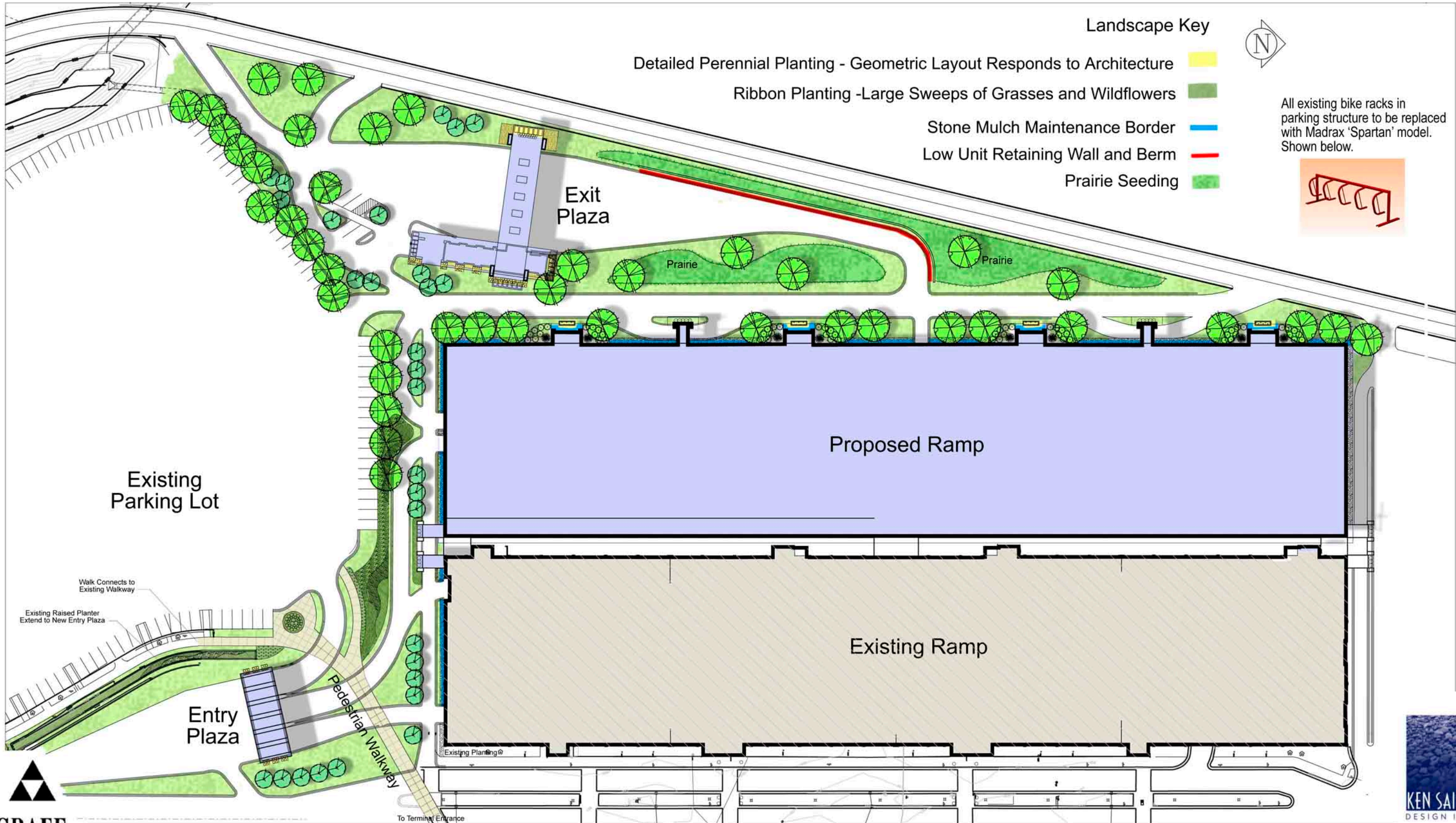
*Public Hearing Required (Submission Deadline 3 Weeks in Advance of Meeting Date)

Where fees are required (as noted above) they apply with the first submittal for either initial or final approval of a project.





Plant List					
Key	Botanical Name	Common Name	Quantity	Size	Spec
Deciduous Trees					
AF	<i>Acer x freemanii</i> 'Jeffersred'	Autumn Blaze Maple		2-1/2" Cal.	B&B
AFC	<i>Acer x freemanii</i> 'Celzam'	Celebration Maple		2-1/2" Cal.	B&B
AS	<i>Acer saccharum</i> 'Morton'	Crescendo Maple		2-1/2" Cal.	B&B
CO	<i>Carya ovata</i>	Shagbark Hickory		2-1/2" Cal.	B&B
CO2	<i>Celtis Occidentalis</i>	Common Hackberry		2-1/2" Cal.	B&B
GB	<i>Ginkgo biloba</i> 'Autumn Gold'	Autumn Gold Ginkgo		2-1/2" Cal.	B&B
QM1	<i>Quercus macrocarpa</i>	Bur Oak - large specimen		3" Cal.	B&B
QM2	<i>Quercus macrocarpa</i>	Bur Oak		2-1/2" Cal.	B&B
QU	<i>Quercus muehlenbergii</i>	Chinkapin Oak		2-1/2" Cal.	B&B
UA	<i>Ulmus americana</i> 'Valley Forge'	Valley Forge American Elm		2-1/2" Cal.	B&B
Ornamental Trees					
MP	<i>Malus</i> 'Prairiefire'	Crabapple		1-3/4" Cal.	B&B
AG	<i>Acer ginalla</i> 'Red Wing'	Shadblow Serviceberry		1-3/4" Cal.	B&B
CC	<i>Crataegus crus-galli</i>	/cockspur Hawthorn		1-3/4" Cal.	B&B
Evergreen Trees					
JC	<i>Juniperus chinensis</i> 'Wintergreen'	Wintergreen Juniper			#3 Cont.
Evergreen Shrubs					
JS	<i>Juniperus chinensis</i> 'Seagreen'	Seagreen Juniper			#3 Cont.
Perennials/Grasses/Groundcovers					
aff	<i>Athyrium filix-femina</i>	Lady Fern			#2 Cont.
ep	<i>Echinacea purpurea</i> 'Magnus'	Magnus Coneflower			#2 Cont.
epk	<i>Echinacea purpurea</i> 'Kim's Knee High'	Kim's Knee High Purple Coneflower			#2 Cont.
epm	<i>Echinacea purpurea</i> 'Kim's Mophead'	Kim's Mophead Coneflower			#2 Cont.
hbb	<i>Hemerocallis</i> 'Border Baby'	Border Baby Daylily			#2 Cont.
hh	<i>Hemerocallis</i> 'Happy Returns'	Happy Returns Daylily			#2 Cont.
hmm	<i>Hemerocallis</i> 'May May'	May May Daylily			#2 Cont.
hsb	<i>Helictotrichon sempervirens</i> 'Blue Sapphire'	Blue Sapphire Oat Grass			#2 Cont.
lp	<i>Liatris pycnostachya</i>	Prairie Blazing Star			#2 Cont.
lsk	<i>Liatris spicata</i>	Gayfeather			#2 Cont.
pa	<i>Pennisetum alopecuroides</i> 'Hamelin'	Fountain Grass			#2 Cont.
pal	<i>Perovskia atriplicifolia</i> 'Little Spire'	Little Spire Russian Sage			#2 Cont.
pq	<i>Parthenocissus quinquefolia</i>	Virginia Creeper			#2 Cont.
sh	<i>Sporobolus heterolepis</i>	Prairie Dropseed			#2 Cont.
ss	<i>Schizachyrium scoparium</i>	Little Bluestem			#2 Cont.
vsb	<i>Veronica</i> 'Sunny Border Blue'	Sunny Border Blue Speedwell			#2 Cont.



Landscape Key

- Detailed Perennial Planting - Geometric Layout Responds to Architecture
- Ribbon Planting -Large Sweeps of Grasses and Wildflowers
- Stone Mulch Maintenance Border
- Low Unit Retaining Wall and Berm
- Prairie Seeding



All existing bike racks in parking structure to be replaced with Madrax 'Spartan' model. Shown below.



**GRAEF
ANHALT
SCHLOEMER**
and Associates Inc.

Dane County Regional Airport - Landscape Design

Madison, WI



KEN SAKI
DESIGN INC
LANDSCAPE
ARCHITECTS
303 S. PATERSON
SUITE ONE
MADISON, WI 53703
Phone: 608 951-3600
Fax: 608 951-2330
www.ksd-la.com

From: Michael May
To: ALL ALDERS
Date: 4/29/2005 11:49:15 AM
Subject: Email and the Open Meeting Laws

NOTE: THIS IS INTENDED TO BE A ONE-WAY ELECTRONIC MEMORANDUM. DO NOT REPLY.
This is an electronic memo, and is not to institute a discussion of any of the matters in the memo. Do not
reply or reply to all. Any response should be by new email to the sender only. Do not forward this email.

Dear Alders:

With a number of new alders taking office, I wanted to send a gentle reminder regarding the use of email
sent to multiple persons as potentially becoming a violation of the open meetings law. Attached to this
email is the formal opinion issued by our office last year on this topic. The opinion also may be viewed on
the city website:

<http://www.cityofmadison.com/attorney/2004opinions/OPINION%20open%20meetings.pdf>

Please adhere to the legal advice therein.

Michael P. May
City Attorney
City of Madison, Wisconsin
Phone: (608) 266-4511
FAX: (608) 267-8715
mmay@cityofmadison.com

PRIVILEGE AND CONFIDENTIALITY NOTICE

This electronic message is intended only for the designated recipient(s). It may contain privileged or
confidential information and should not be disclosed to third parties without our express permission. If you
are not the intended recipient, you have received this message in error and any review, dissemination or
copying of this message is prohibited. If you have received this message in error, please notify the sender
immediately, delete the original message and destroy any electronic or printed copies of this message.
Thank you.

CC: AT ATTY; Mayor; Piraino, Janet; Twigg, George

**CITY OF MADISON
OFFICE OF THE CITY ATTORNEY
Room 401, CCB
266-4511**

July 19, 2004

OPINION NO. 04-001

TO: Alder Brenda Konkel, Common Council President
Common Council Organization Committee

FROM: Michael P. May, City Attorney

SUBJECT: Negative Quorums, Email, and the Open Meetings Law

You have asked my opinion on the calculation of negative quorums, the use of email, and application of the Open Meetings law to those issues. These concepts are best understood against the policy that lies at the heart of both the Public Records Law and the Open Meetings Law.

The Policy Behind Both The Public Records and Open Meetings Laws

Both the Public Records Law and the Open Meetings Law are based upon the belief that an informed public is essential to the health of a representative government. Thus, to the maximum extent possible, consistent with the advancement of public interests, the public is entitled to observe government in action. This right of inspection extends to observing meetings where decisions are made or information gathered and to review of the records which government creates or maintains. See secs. 19.31 & 19.81, Wis. Stats., and secs. 3.42 and 3.44, MGO.

Definition of a Meeting

A meeting occurs any time enough members of a governmental body gather for the purpose of exercising the powers, duties or authority of that governmental body. Sec. 19.82(2), Wis. Stats. Meetings occur under such circumstances even when the body is simply gathering information and not exercising any decision-making authority. All such meetings must be preceded by public notice of the agenda and must be open to the public. Violation of these requirements can lead to the imposition of civil forfeitures. The City may not reimburse any official who is sentenced to such a penalty. 66 OAG 226 (1977).

Negative Quorums

The concepts in the preceding paragraph are easy enough to understand when a majority or a quorum of a body gathers and engages in discussion about matters within its authority. However, there are less obvious times when the Open Meetings Law will apply. As stated above, these laws apply whenever a sufficient number of members of a governmental body gather for the purpose of exercising the powers, duties and/or authority of that body. As applied by the Wisconsin Supreme

Court in *State ex rel. Newspapers, Inc. v. Showers*, 135 Wis. 2d 77, 398 N.W. 2d 154 (1987), the laws apply any time that enough members of a body gather such that they can determine the outcome of an item or the course of the body's actions. This concept thus applies to any gathering of members such that if they acted in concert, they could block passage of an item or prevent a course of action. This number of members is often referred to as a "negative quorum."

The best example of a "negative quorum" arises when an item requires a super majority (i.e., a two thirds majority) in order to be passed or approved. If more than one third of the members of such a body gather and discuss the item, they are engaging in a meeting under the Open Meetings Laws. Such a meeting would be illegal if not preceded by a proper notice and if not accessible to the public. Aside from the Open Meetings Law, such a meeting would violate the Madison General Ordinances as section 3.27(3)(a) requires the adjournment of any meeting where a body fails to achieve a quorum of its membership within fifteen minutes of its scheduled meeting time.

The number of a body's members that may constitute a "negative quorum" is often difficult to determine in advance of a vote or action on an item. In 1992, the Attorney General's Office informed the City that the size of a "negative quorum" may be determined only upon knowing the size of the body that is later assembled to officially act on the matter in question. As a matter of caution, this office has therefore advised that it is safest to determine what may constitute a "negative quorum" by first determining the most conservative (smallest) number of members who could meet and constitute a quorum. A negative quorum would be that number of members who, through voting against the item or through abstention, could prevent passage of the item.

Thus, we have advised, and now offer our opinion, that a negative quorum may exist whenever there is a gathering of 50% or more of the quorum of the parent body. For example, if you have a seven member committee, the quorum for action by that committee is 4. In that circumstance, if there were only a bare quorum present at a meeting, any 2 members could effectively block action by the committee. If those two members had previously met in an unnoticed gathering to discuss the business to come before the committee, those members violated the Open Meeting law.

The difficulty is that one doesn't know if there has or has not been a violation of the Open Meetings Law until the parent committee meets. If you look at the example above, if the full committee is at the subsequent meeting, then the meeting of the two members did not violate the Open Meetings Law. This problem of a "floating negative quorum" is the reason we advise caution: no group constituting 50% or more of the quorum of any governmental body should meet without proper notice. Until the state Supreme Court modifies the test set out in *Showers*, this is the proper approach to take.

The following chart shows this *Showers* type limitation:

Size of Governmental Body	Quorum	Smallest Possible Negative Quorum (for majority vote)
7 or less	4 or less	2
8 - 11	5 - 6	3
12 and larger	At least 7	At least 4

Email as a Meeting

The problems raised by the negative quorum are complicated by the regular use of email. Email not only is a public record, but it has the characteristics of both a formal written letter or memorandum and, if used in rapid succession, of a "written" telephone conversation.

Telephone conference calls may be used for governmental meetings, if properly noticed. 69 OAG 143, 144 (1980). To the extent an initial e-mail results in a quorum—or a negative quorum—of a governmental body responding to the other members of the body, such an email could very easily be found to constitute a meeting. If not noticed, it would be in violation of the Open Meetings Law. This legal concern is discussed in a League of Municipalities legal comment from the February 2001 issue of *The Municipality*.

To avoid such results, we are recommending that any email that is sent to even a negative quorum of a governmental body contain a clear disclaimer at the top of the email. We suggest language such as the following:

"NOTE: THIS IS INTENDED TO BE A ONE-WAY ELECTRONIC MEMORANDUM. DO NOT REPLY. This is an electronic memo, and is not to institute a discussion of any of the matters in the memo. Do not reply or reply to all. Any response should be by new email to the sender only. Do not forward this email to another."

Persons receiving the email should follow these instructions. This language is needed only for emails that are sent to the negative quorum or more of a governmental body.

If you have any questions regarding the matters set out in this opinion, feel free to contact me or Assistant City Attorney Roger Allen.

Michael P. May
City Attorney

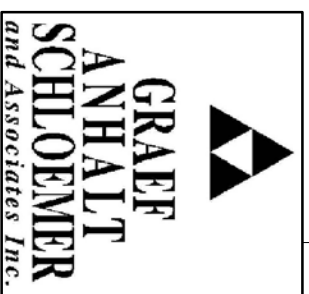
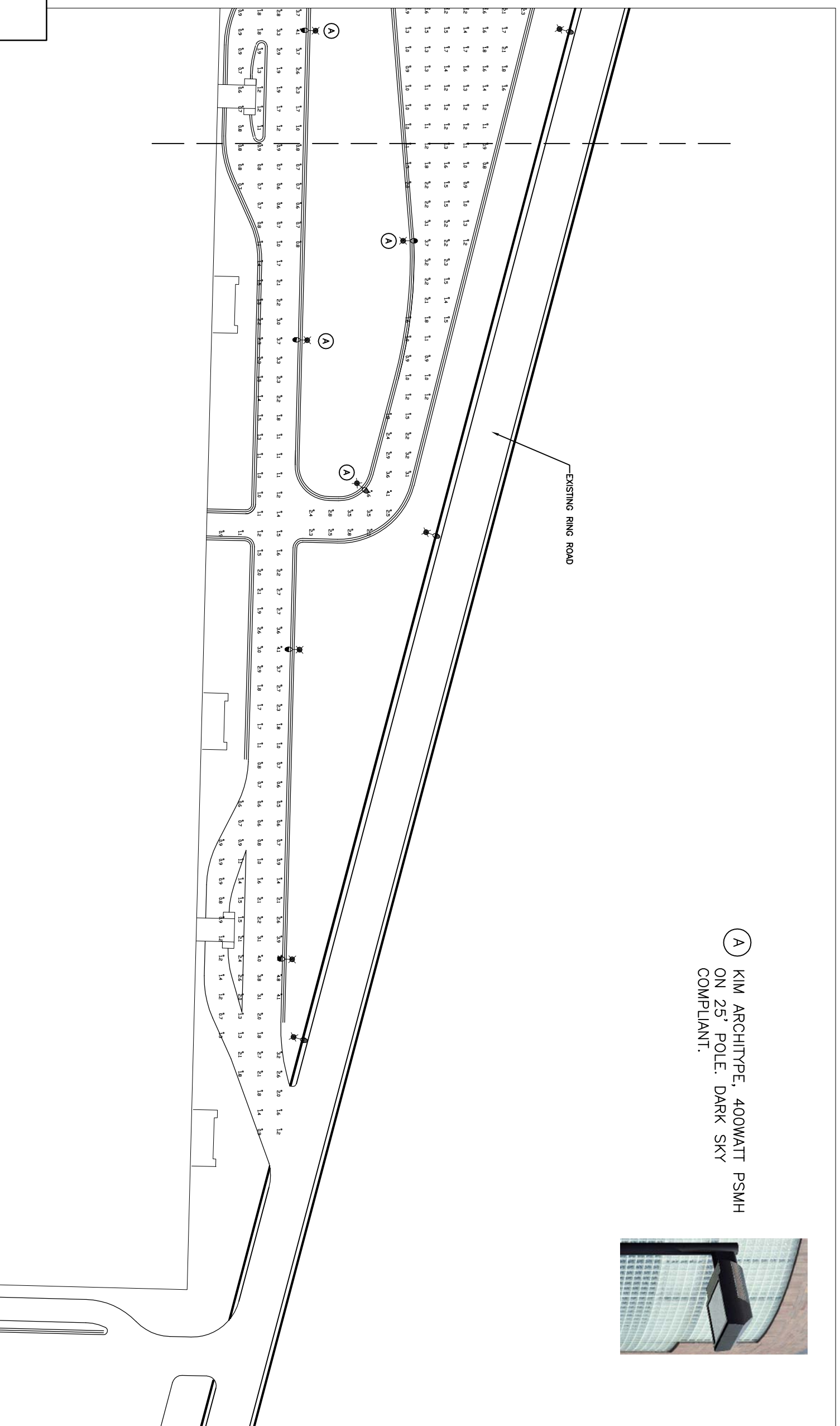
MPM:RAA:pah

cc: Mayor Cieslewicz
City Clerk
Department/Division Heads
Common Council Members

CAPTION: A "negative quorum" may exist when 50% or more of the quorum of a governmental body meets, and such a meeting may violate Wisconsin's Open Meeting Law. Since successive responsive emails may constitute a meeting, a disclaimer and procedure to avoid violation of the Open Meetings Law through use of email is recommended.



Ⓐ KIM ARCHITYPE, 400WATT PSMH
ON 25' POLE. DARK SKY
COMPLIANT.



Dane County Regional Airport - Exit Plaza

Madison, WI



epstein uhen : architects

02/28/07

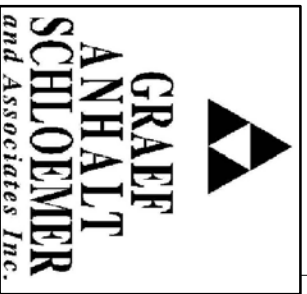
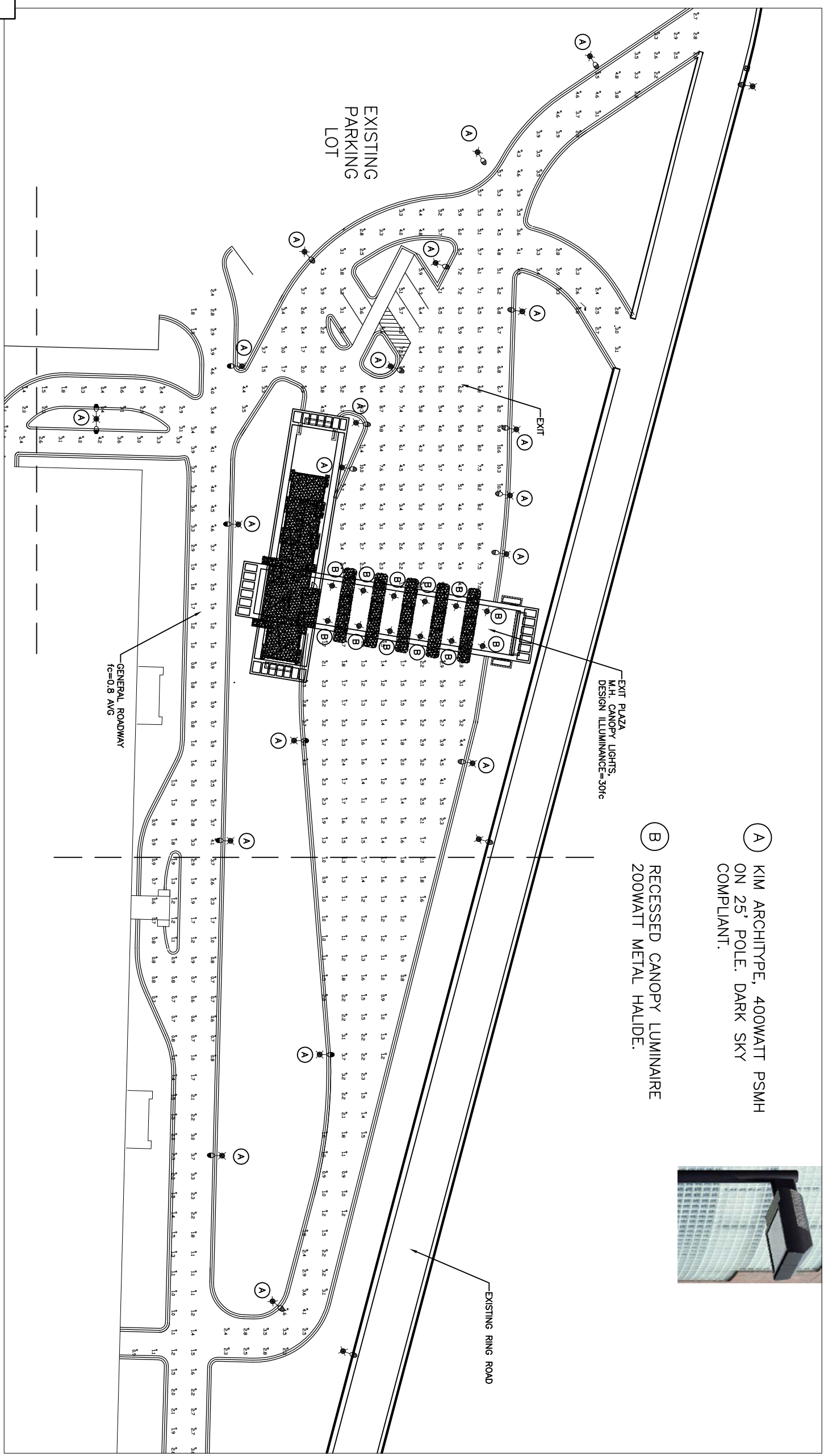
© Epstein Uhen Architects, Inc.



(A) KIM ARCHITYPE, 400WATT PSMH
ON 25' POLE. DARK SKY
COMPLIANT.

(B) RECESSED CANOPY LUMINAIRE
200WATT METAL HALIDE.

EXIT PLAZA
M.H. CANOPY LIGHTS,
DESIGN ILLUMINANCE=30fc



Dane County Regional Airport - Exit Plaza

Madison, WI



epstein uhlen : architects

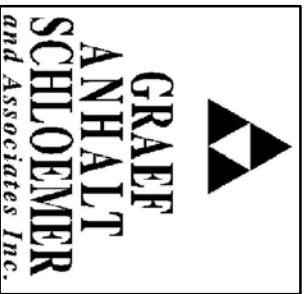
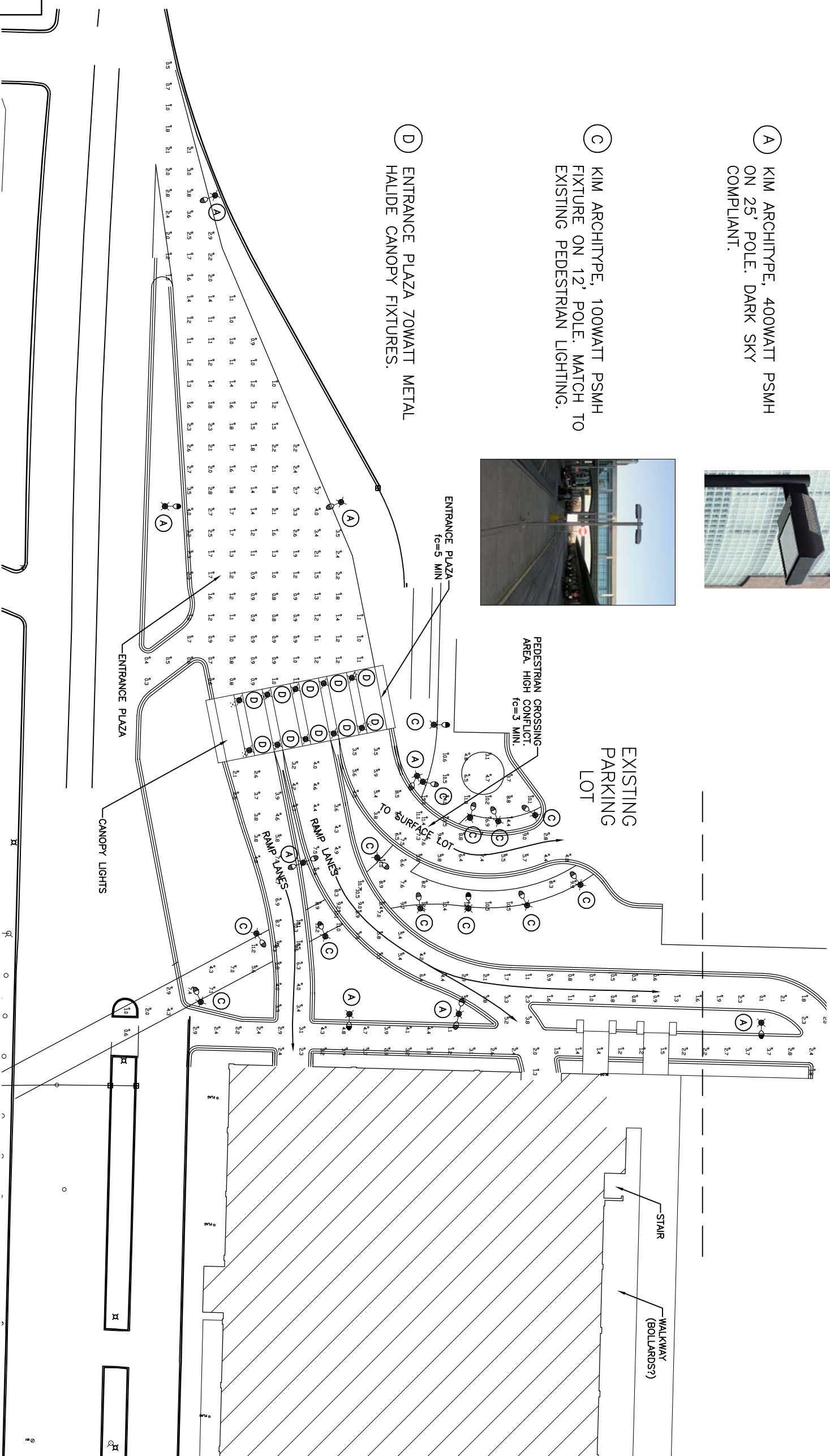


- A KIM ARCHITYPE, 400WATT PSMH ON 25' POLE. DARK SKY COMPLIANT.



- C KIM ARCHITYPE, 100WATT PSMH FIXTURE ON 12' POLE. MATCH TO EXISTING PEDESTRIAN LIGHTING.

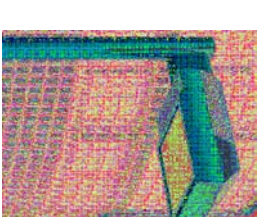
- D ENTRANCE PLAZA 70WATT METAL HALIDE CANOPY FIXTURES.



Dane County Regional Airport - Exit Plaza

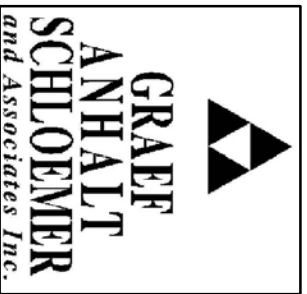
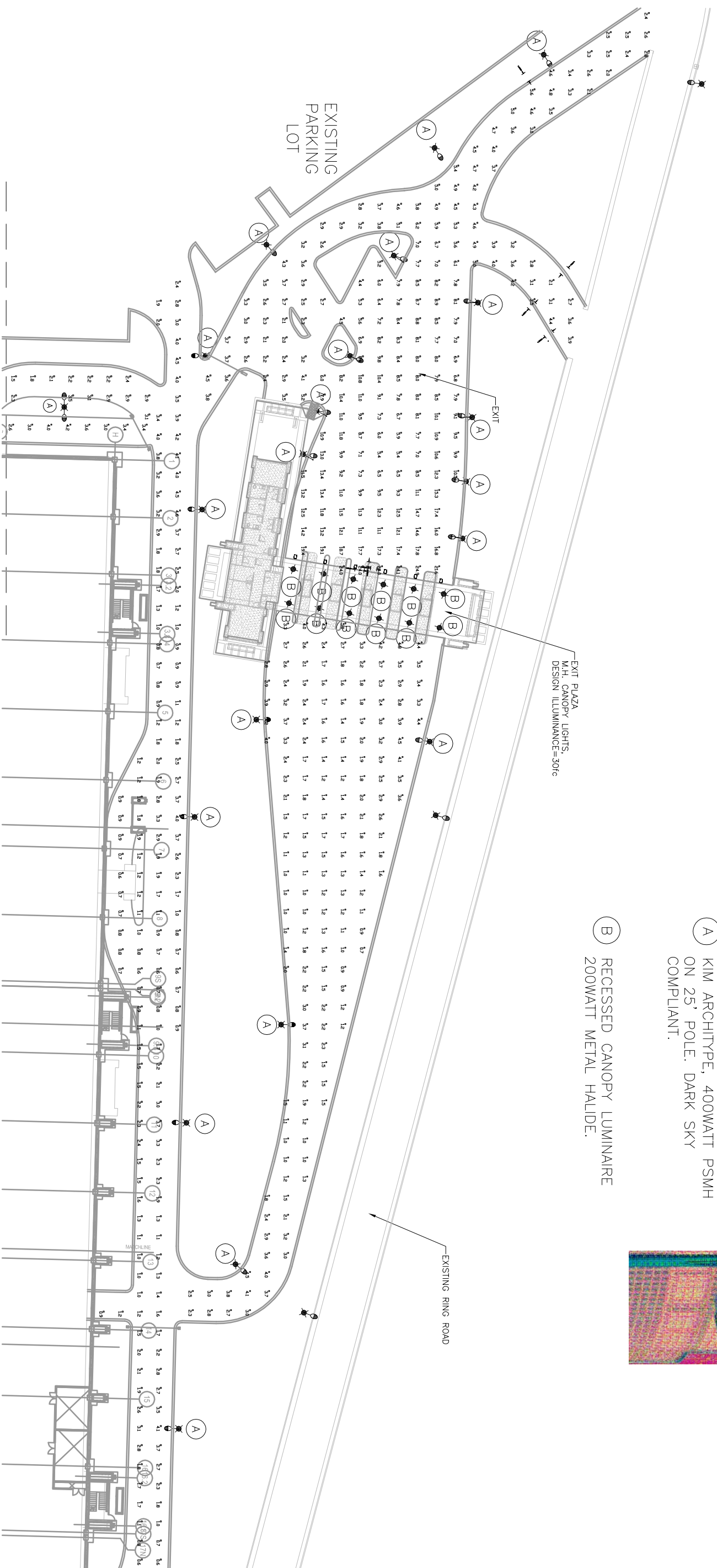
Madison, WI





(A) KIM ARCHITYPE, 400WATT PSMH ON 25' POLE. DARK SKY COMPLIANT.

(B) RECESSED CANOPY LUMINAIRE 200WATT METAL HALIDE.



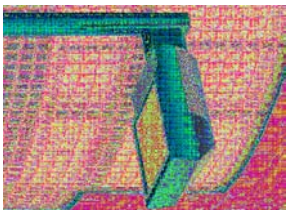
Dane County Regional Airport - Exit Plaza

Madison, WI



P1 PEDESTRIAN WALKWAY PHOTOMETRIC NOTES:

1. ASSUMPTIONS/DATA USED FOR LIGHTING CALCULATIONS
 -SITE IS ASSUMED FLAT
 -0.70 TOTAL LIGHT LOSS FACTOR
 -5040 INITIAL LUMENS FOR 70W METAL HALIDE LAMP.
2. PLAN NOTES FOOTCANDLE AT GRADE.
3. DESIGNED TO PROVIDE MINIMAL CONTRAST BETWEEN ROADWAY TRANSITIONAL LIGHTING AND PEDESTRIAN CROSSWALK.
4. WALKWAY ILLUMINATION:
 AVERAGE: 4.07 Fc



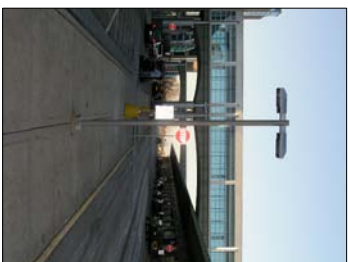
E1 ENTRANCE PLAZA PHOTOMETRIC NOTES:

1. ASSUMPTIONS/DATA USED FOR LIGHTING CALCULATIONS
 -SITE IS ASSUMED FLAT
 -0.70 TOTAL LIGHT LOSS FACTOR
 -5600 INITIAL LUMENS FOR 70W METAL HALIDE LAMP.
2. PLAN NOTES FOOTCANDLE AT GRADE.
3. DESIGNED IESNA CRITERIA USING "LIGHTING FOR TOLL PLAZAS" FINAL DRAFT 2007.
4. TOLL PLAZA ILLUMINATION:
 AVERAGE: 6.38 Fc
 AVERAGE/MIN: 3.54 Fc
 MAXIMUM/MIN: 5.4 Fc

T1 TRANSITIONAL LIGHTING PHOTOMETRIC NOTES:

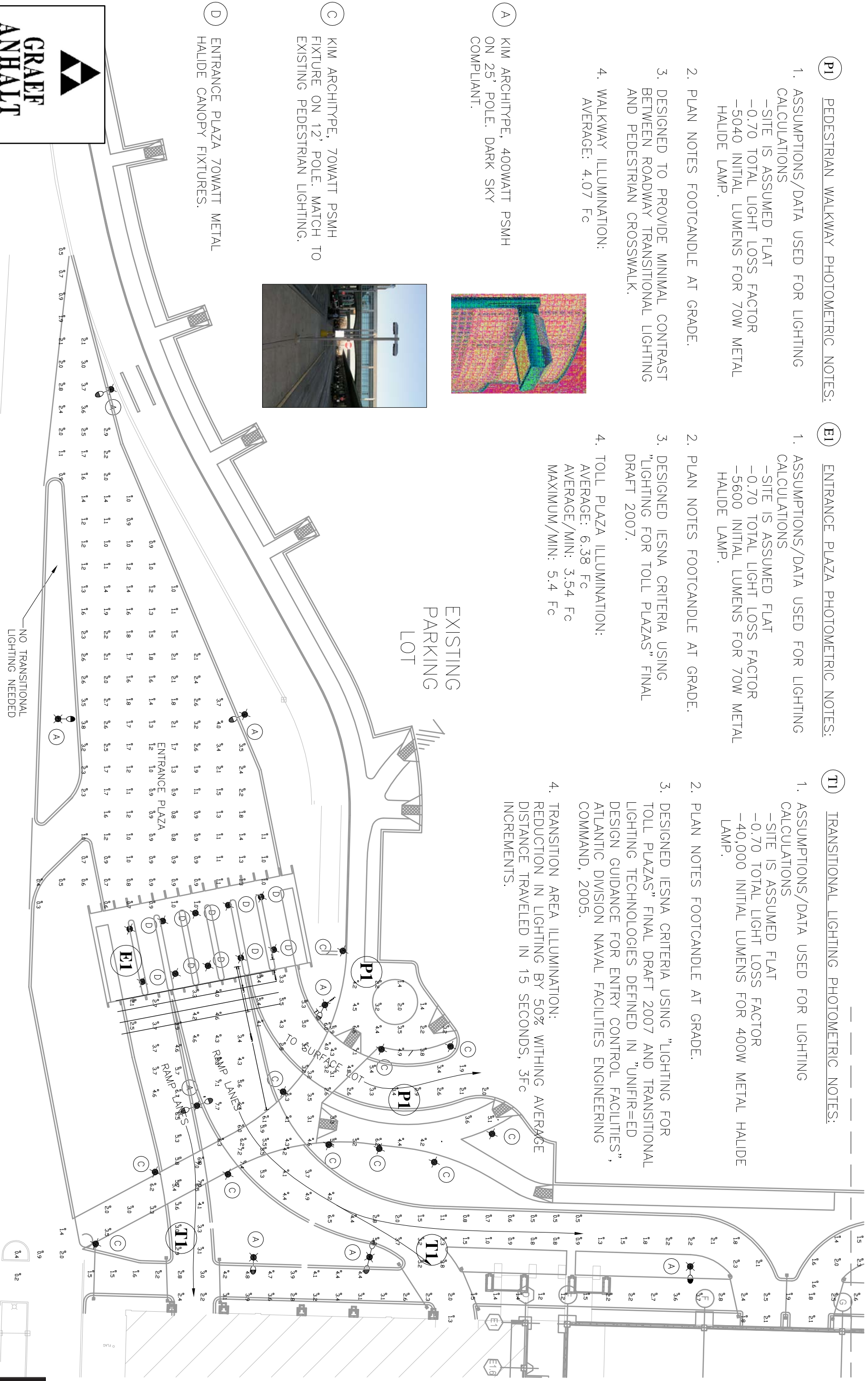
1. ASSUMPTIONS/DATA USED FOR LIGHTING CALCULATIONS
 -SITE IS ASSUMED FLAT
 -0.70 TOTAL LIGHT LOSS FACTOR
 -40,000 INITIAL LUMENS FOR 400W METAL HALIDE LAMP.
2. PLAN NOTES FOOTCANDLE AT GRADE.
3. DESIGNED IESNA CRITERIA USING "LIGHTING FOR TOLL PLAZAS" FINAL DRAFT 2007 AND TRANSITIONAL LIGHTING TECHNOLOGIES DEFINED IN "UNIFIR=ED DESIGN GUIDANCE FOR ENTRY CONTROL FACILITIES", ATLANTIC DIVISION NAVAL FACILITIES ENGINEERING COMMAND, 2005.
4. TRANSITION AREA ILLUMINATION:
 REDUCTION IN LIGHTING BY 50% WITHING AVERAGE DISTANCE TRAVELED IN 15 SECONDS, 3Fc INCREMENTS.

A KIM ARCHITYPE, 400WATT PSMH ON 25' POLE. DARK SKY COMPLIANT.

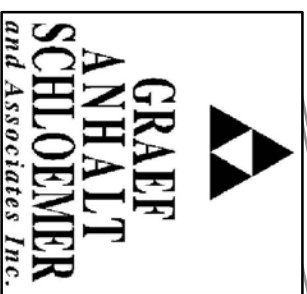


C KIM ARCHITYPE, 70WATT PSMH FIXTURE ON 12' POLE. MATCH TO EXISTING PEDESTRIAN LIGHTING.

D ENTRANCE PLAZA 70WATT METAL HALIDE CANOPY FIXTURES.



NO TRANSITIONAL LIGHTING NEEDED



Dane County Regional Airport - Exit Plaza

Madison, WI



epstein uhlen : architects

02/28/07 306009-01

© Epstein Uhlen Architects, Inc.

April 1, 2007

City of Madison
Department of Planning & Development
215 Martin Luther King Jr. Boulevard
Room LL100
Madison, Wisconsin 53703

RE: Dane County Regional Airport Parking Structure Expansion and New Exit Plaza
4000 International Lane

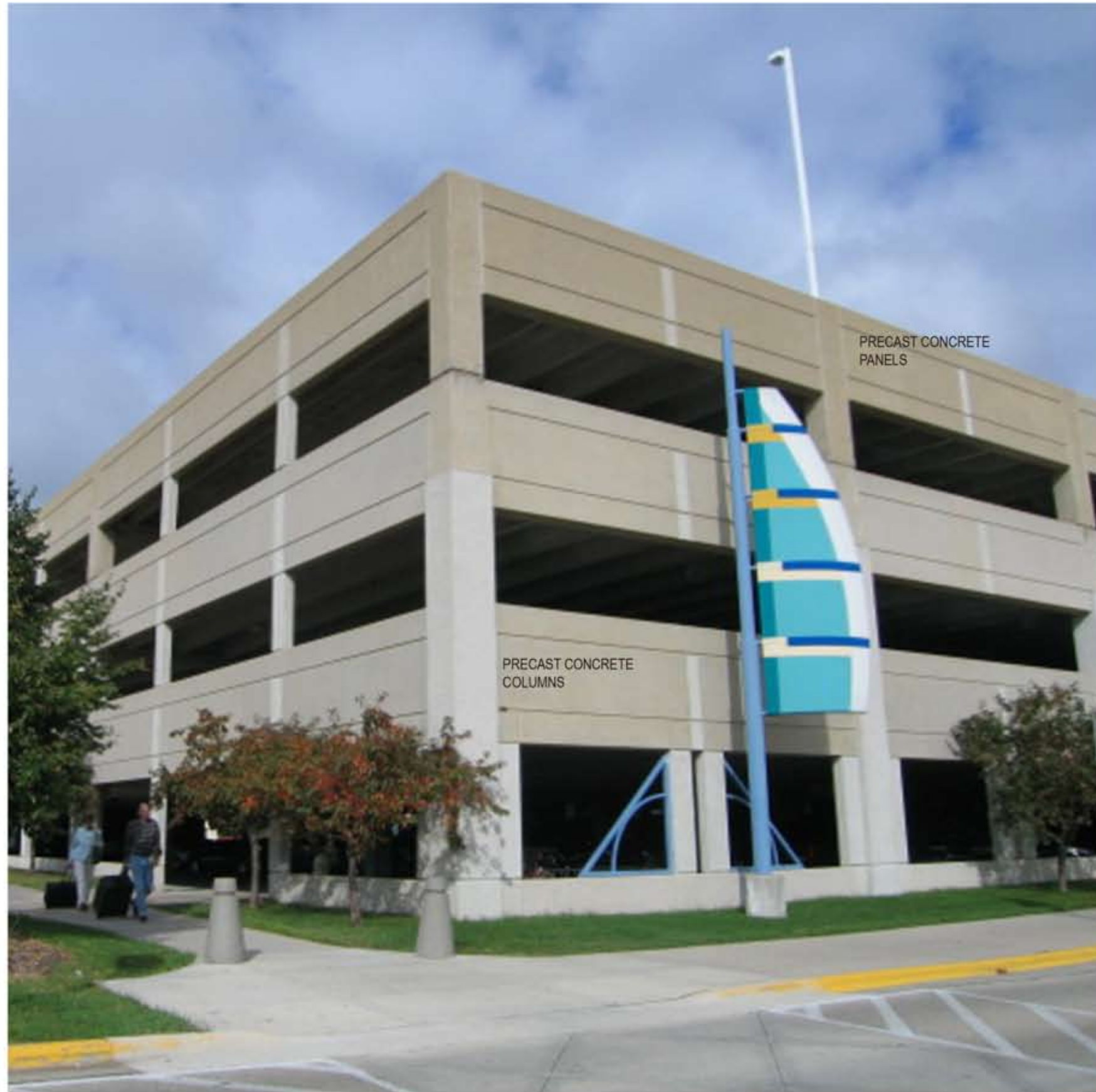
Dear Urban Design Commission:

Presented for Final Approval, this project consists of an expansion of the existing Parking Ramp and replacement of the existing Exit Plaza at the Dane County Regional Airport. The design intent is to substantially match the recently completed Airport Terminal Building. The proposed Exit Plaza emphasizes the horizontal and is primarily brick and glass. The column and spandrel elements on the proposed Parking Garage will be constructed of Precast concrete which will match the existing Parking Garage. The Stair Towers and Snow Chutes on the Parking Garage will be a combination of Brick and Precast matching the Exit Plaza and the Parking Garage. The Entry Plaza is primarily painted steel and will substantially match the existing canopy on the main Terminal Building. Modifications to the existing Parking Garage include new flat roofs and window mullions on the stair towers to match the Terminal Building. The existing "Sails" will be re-clad with a design and colors to compliment the Terminal Building design. Signage for managing vehicular movement will be provided to match existing traffic control signage. Signage to manage exit and entry lanes will be programmable LED panels integrated into the building architecture.

The Landscape Design continues the existing emphasis on a natural appearing prairie. Using native plant species and composition the landscape will require little or no maintenance or irrigation. The recently completed re-configuration of the airport ring road has made accommodation for storm water management on site. The ring road project was completed with the diligent input of the State of Wisconsin Department of Natural Resources. Site lighting design concept and fixture selections are based on existing design and fixtures at the airport terminal area. The proposed project continues to work with the existing site design with an emphasis on pedestrian way finding and safety. These issues are accommodated by re-configuring the pedestrian path from the south parking lots to the terminal and providing additional space between the vehicle entry plaza and the pedestrian walkway.

Sincerely,

Mark M. Smith, AIA
Architect



PRECAST CONCRETE
PANELS

PRECAST CONCRETE
COLUMNS

Dane County Regional Airport - Parking Structure

EXISTING VISUAL CONTEXT



PARKING STRUCTURE

TERMINAL

MATERIALS KEY:

- 1 BRICK MASONRY TYPE #1
- 2 BRICK MASONRY TYPE #2
- 3 ARCHITECTURAL PRECAST CONCRETE- LIMESTONE FINISH
- 4 COMPOSITE ALUMINUM PANEL SYSTEM
- 5 ALUMINUM STOREFRONT GLAZING SYSTEM- CLEAR ANODIZED FINISH
- 6 EXTERIOR PLANTER- BRICK MASONRY TYPE #1
- 7 COPPER PIPE FINIAL
- 8 PRE-MANUFACTURED BOOTH, PAINTED TO MATCH BRICK TYPE #1
- 9 ALUMINUM DOOR- CLEAR ANODIZE FINISH TO MATCH STORFRONT GLAZING SYSTEM



Dane County Regional Airport - Parking Structure

EXISTING VISUAL CONTEXT



Dane County Regional Airport - Existing Parking Structure

PROPOSED SOUTH ELEVATION



**GRAEF
ANHALT
SCHLOEMER**
and Associates Inc.

Dane County Regional Airport - Existing Parking Structure

PROPOSED SOUTH EAST ELEVATION



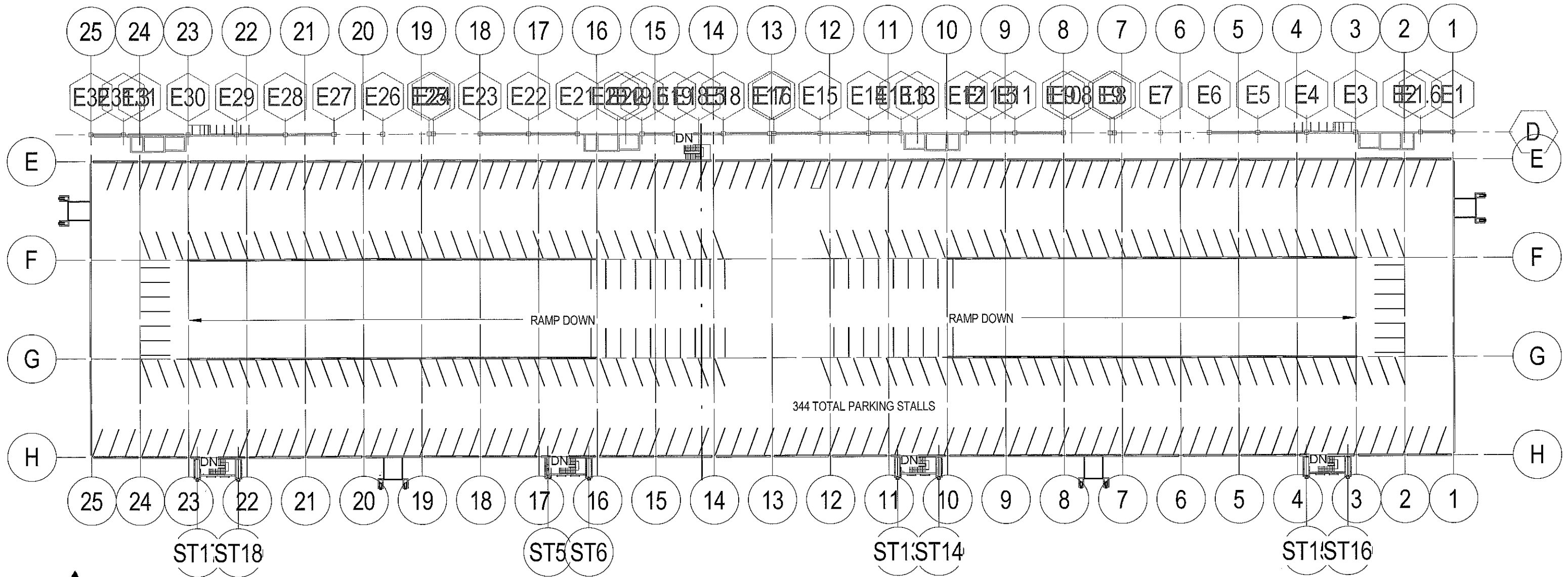
eppstein uhen : architects

04/01/2007

06009-01

© Eppstein Uhen Architects, Inc.





Dane County Regional Airport - Parking Structure

UDC THIRD FLOOR PKNG - 1"=60'-0"



epstein uhen : architects

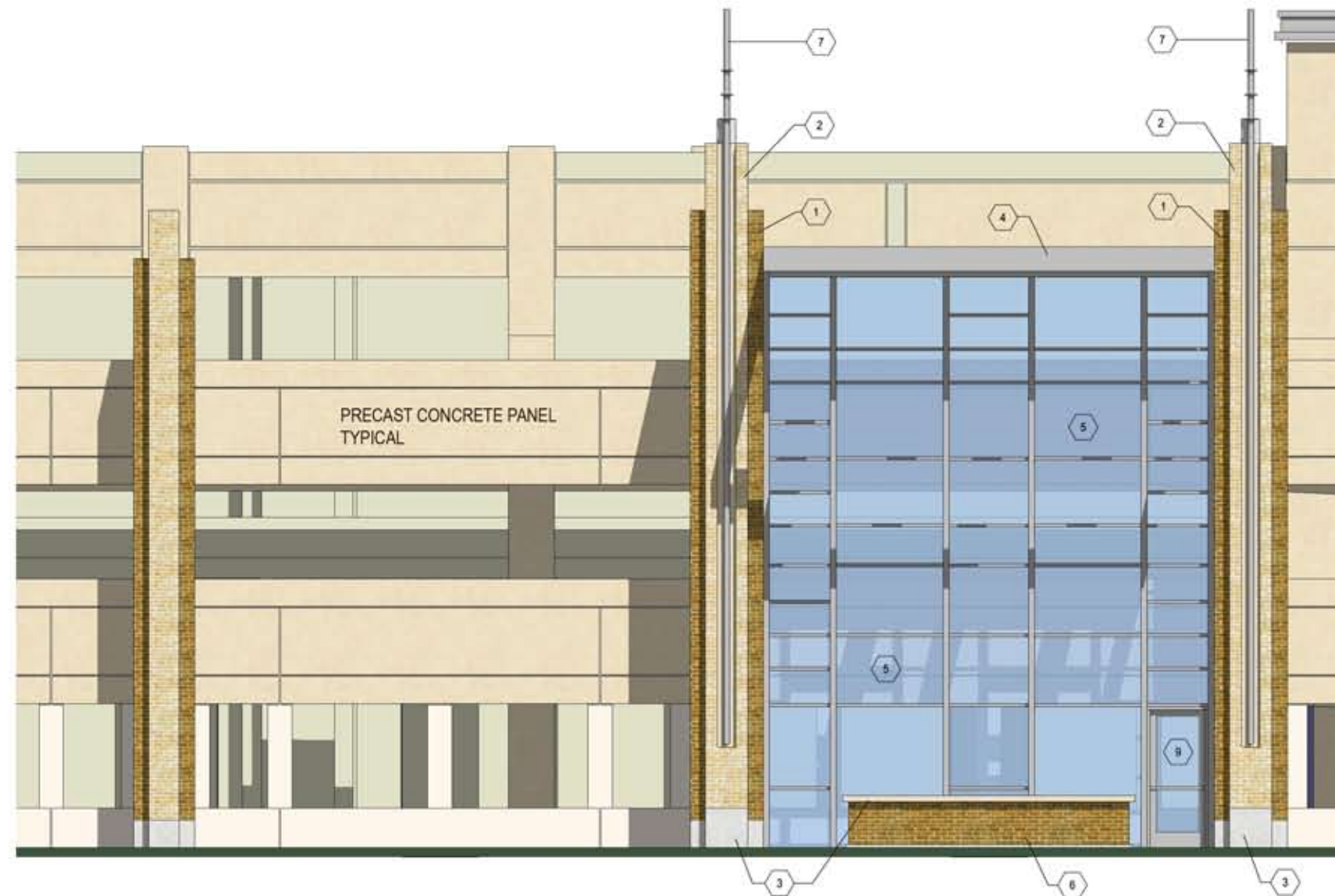
02/28/07

06009-01

© Epstein Uhen Architects, Inc.

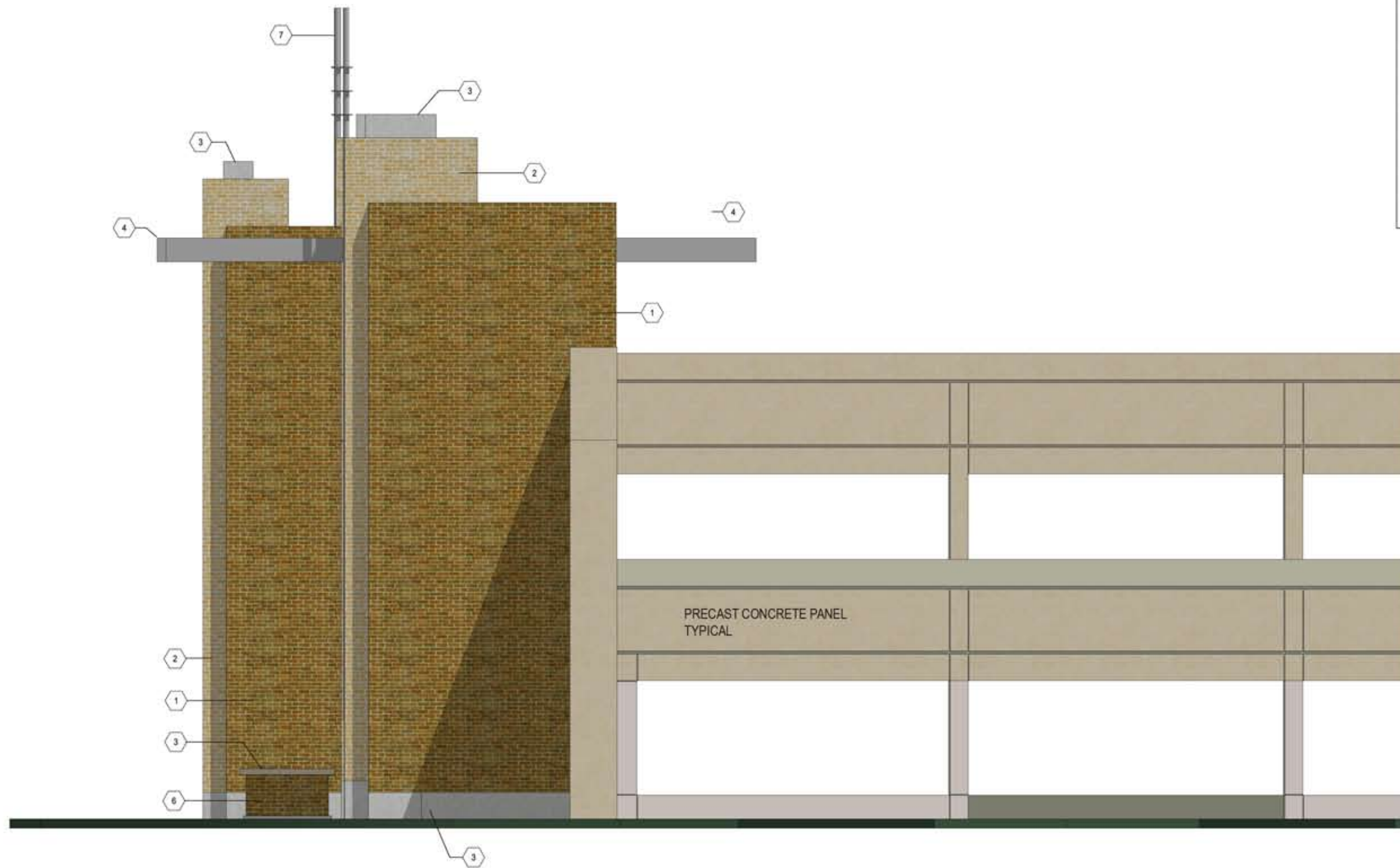
MATERIALS KEY:

1	BRICK MASONRY TYPE #1
2	BRICK MASONRY TYPE #2
3	ARCHITECTURAL PRECAST CONCRETE- LIMESTONE FINISH
4	COMPOSITE ALUMINUM PANEL SYSTEM
5	ALUMINUM STOREFRONT GLAZING SYSTEM- CLEAR ANODIZED FINISH
6	EXTERIOR PLANTER- BRICK MASONRY TYPE #1
7	COPPER PIPE FINIAL
8	PRE-MANUFACTURED BOOTH. PAINTED TO MATCH BRICK TYPE #1
9	ALUMINUM DOOR- CLEAR ANODIZE FINISH TO MATCH STORFRONT GLAZING SYSTEM



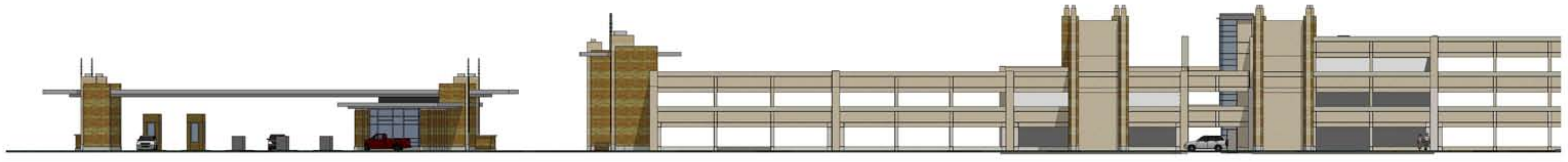
MATERIALS KEY:

- 1 BRICK MASONRY TYPE #1
- 2 BRICK MASONRY TYPE #2
- 3 ARCHITECTURAL PRECAST CONCRETE- Limestone Finish
- 4 COMPOSITE ALUMINUM PANEL SYSTEM
- 5 ALUMINUM STOREFRONT GLAZING SYSTEM- CLEAR ANODIZED FINISH
- 6 EXTERIOR PLANTER- BRICK MASONRY TYPE #1
- 7 COPPER PIPE FINIAL
- 8 PRE-MANUFACTURED BOOTH. PAINTED TO MATCH BRICK TYPE #1
- 9 ALUMINUM DOOR- CLEAR ANODIZE FINISH TO MATCH STORFRONT GLAZING SYSTEM



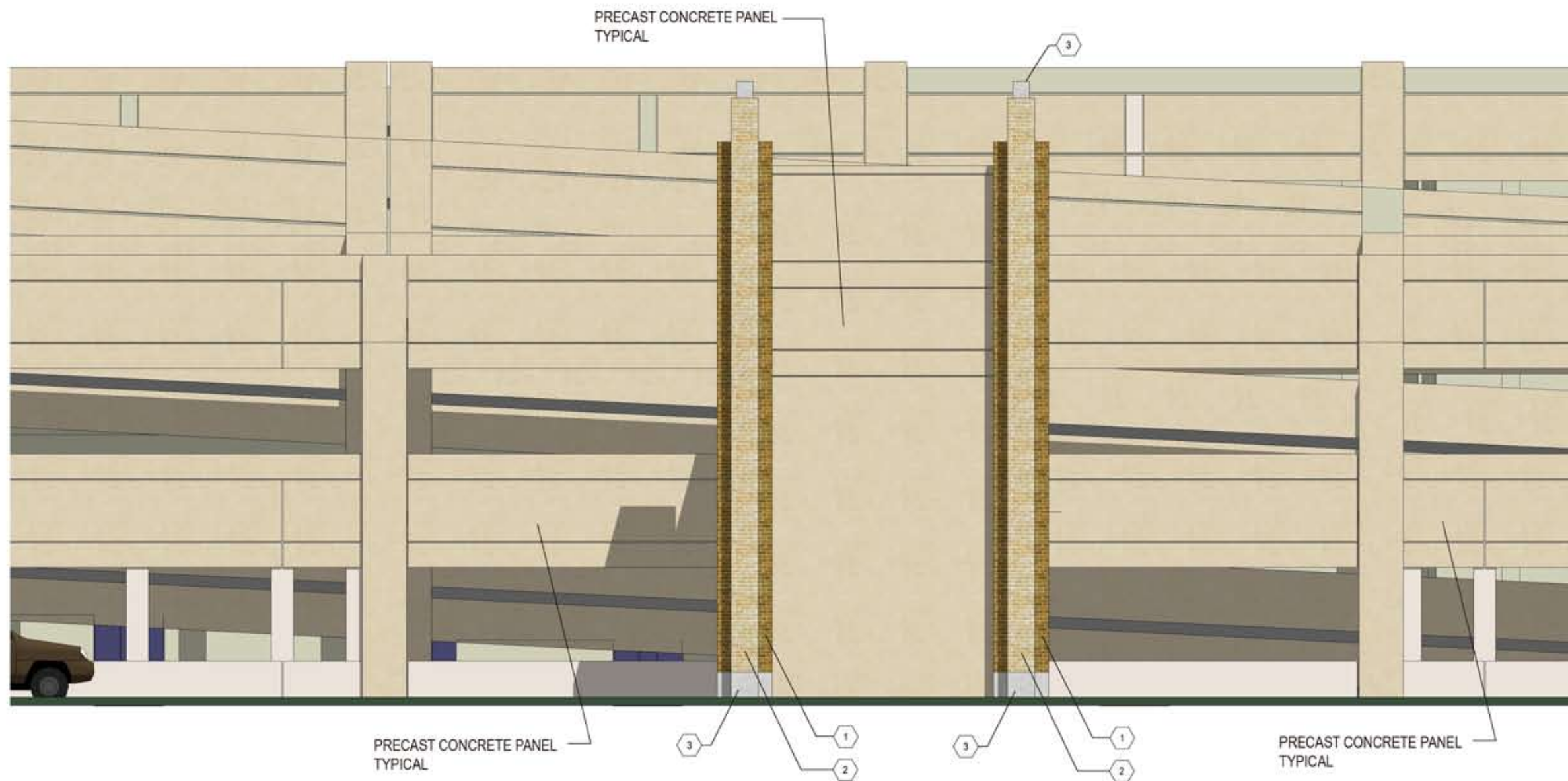
PRECAST CONCRETE PANEL
TYPICAL





MATERIALS KEY:

- 1 BRICK MASONRY TYPE #1
- 2 BRICK MASONRY TYPE #2
- 3 ARCHITECTURAL PRECAST CONCRETE- LIMESTONE FINISH
- 4 COMPOSITE ALUMINUM PANEL SYSTEM
- 5 ALUMINUM STOREFRONT GLAZING SYSTEM- CLEAR ANODIZED FINISH
- 6 EXTERIOR PLANTER- BRICK MASONRY TYPE #1
- 7 COPPER PIPE FINIAL
- 8 PRE-MANUFACTURED BOOTH, PAINTED TO MATCH BRICK TYPE #1
- 9 ALUMINUM DOOR- CLEAR ANODIZE FINISH TO MATCH STORFRONT GLAZING SYSTEM



**GRAEF
ANHALT
SCHLOEMER**
and Associates Inc.

Dane County Regional Airport - Parking Structure

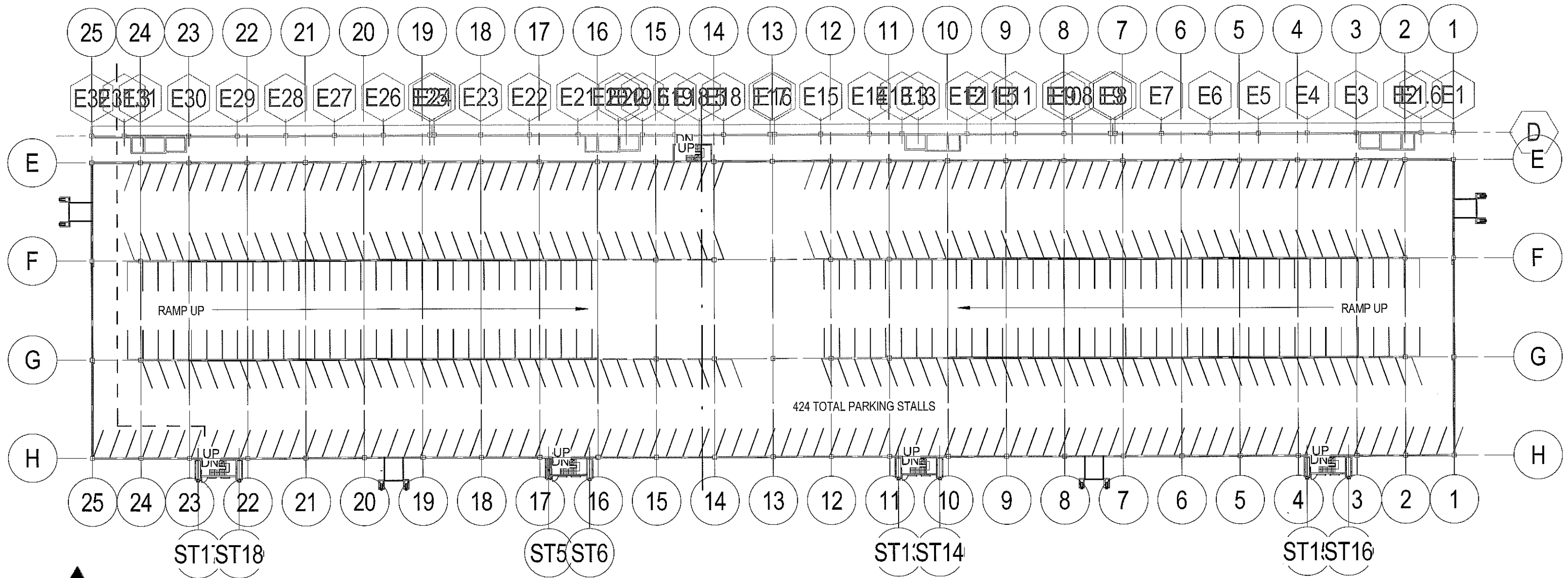
SNOW CHUTE- WEST ELEVATION



eppstein uhen : architects

02/28/07 06009-01

© Eppstein Uhen Architects, Inc.



Dane County Regional Airport - Parking Structure

UDC SECOND FLOOR PKNG - 1"=60'-0"



epstein uhen : architects

02/28/07

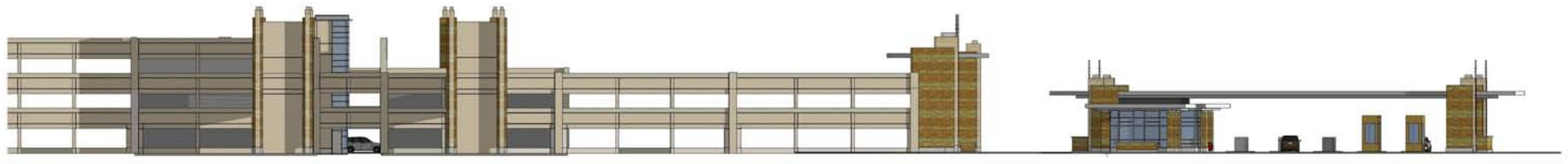
06009-01

© Epstein Uhen Architects, Inc.



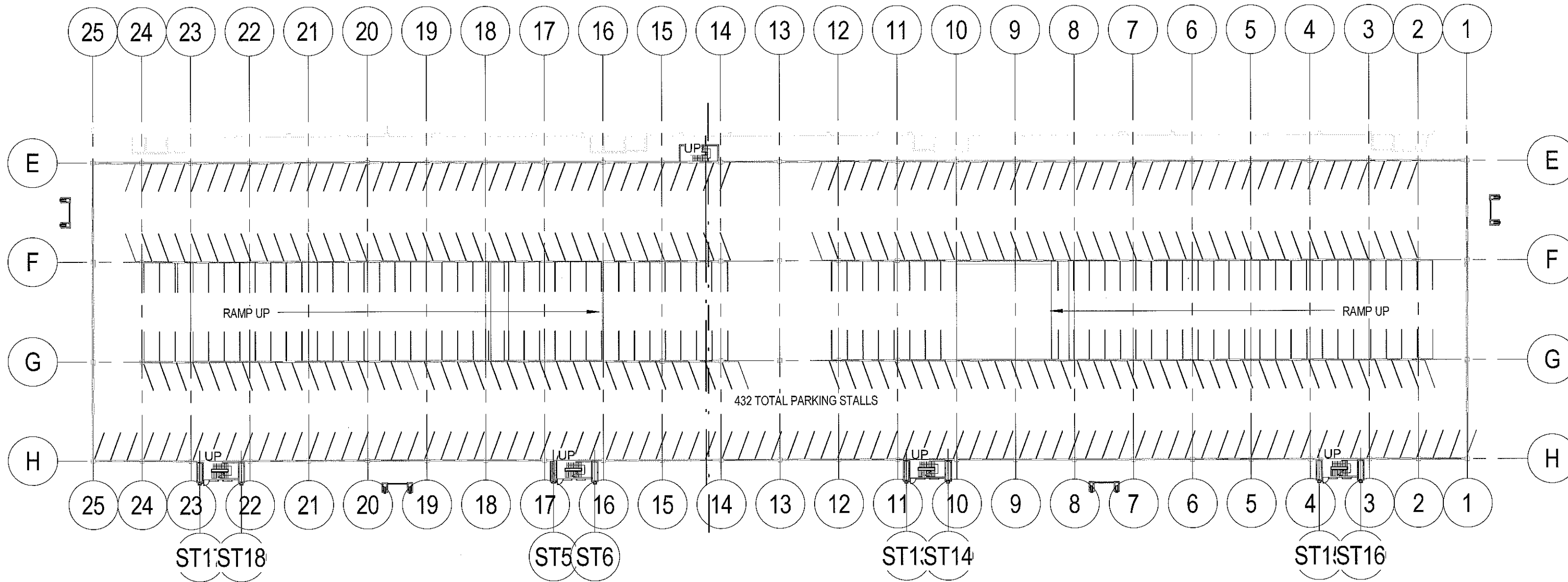
Dane County Regional Airport - Parking Structure

NORTHWEST PERSPECTIVE



Dane County Regional Airport - Parking Structure

NORTH ELEVATION



FIRST FLOOR: 432 STALLS
SECOND FLOOR: 424 TOTAL
THIRD FLOOR: 344 TOTAL
TOTAL: 1,200 PARKING STALLS



Dane County Regional Airport - Parking Structure

UDC FIRST FLOOR PKNG - 1"=60'-0"

epstein uhen : architects

02/28/07

06009-01

© Epstein Uhen Architects, Inc.

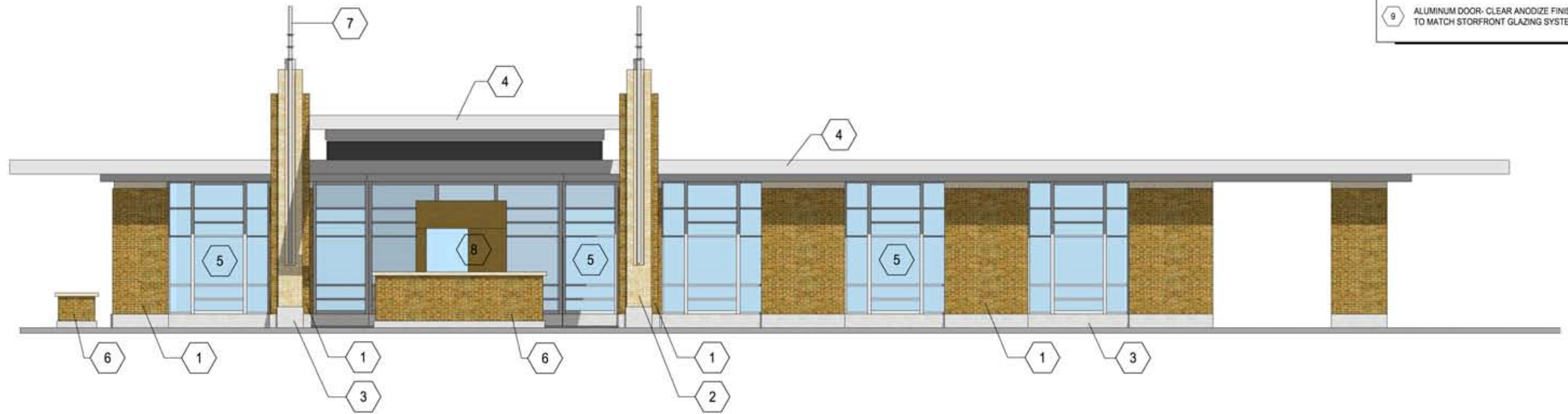


Dane County Regional Airport - Existing Parking Structure

PROPOSED STAIR TOWER AND SAIL

MATERIALS KEY:

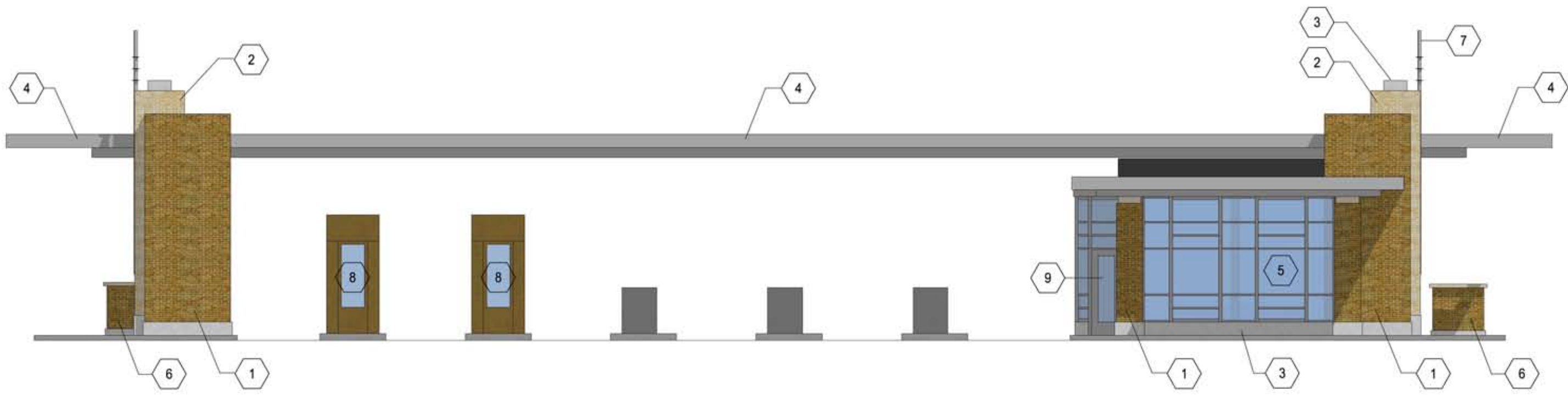
- 1 BRICK MASONRY TYPE #1
- 2 BRICK MASONRY TYPE #2
- 3 ARCHITECTURAL PRECAST CONCRETE- Limestone Finish
- 4 COMPOSITE ALUMINUM PANEL SYSTEM
- 5 ALUMINUM STOREFRONT GLAZING SYSTEM- CLEAR ANODIZED FINISH
- 6 EXTERIOR PLANTER- BRICK MASONRY TYPE #1
- 7 COPPER PIPE FINIAL
- 8 PRE-MANUFACTURED BOOTH. PAINTED TO MATCH BRICK TYPE #1
- 9 ALUMINUM DOOR- CLEAR ANODIZE FINISH TO MATCH STORFRONT GLAZING SYSTEM

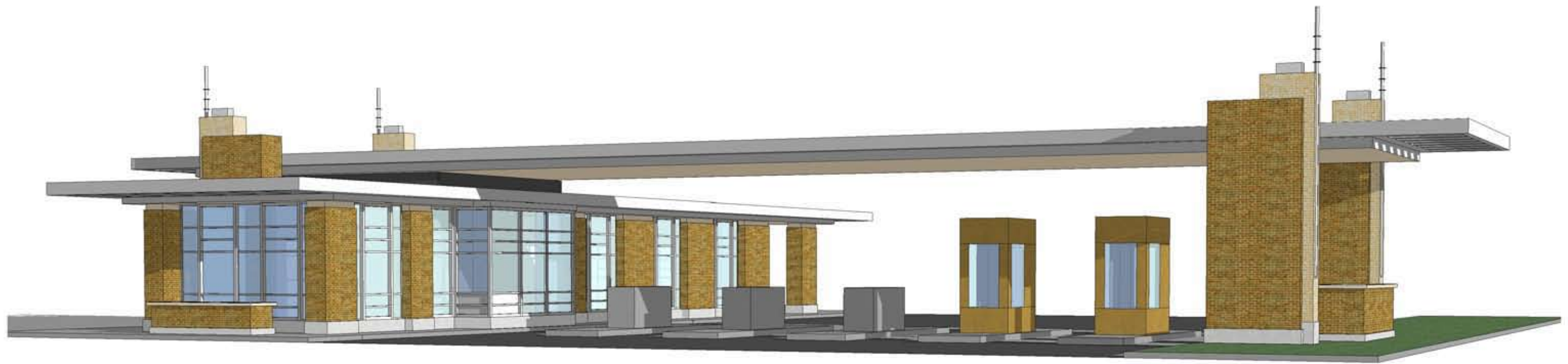




MATERIALS KEY:

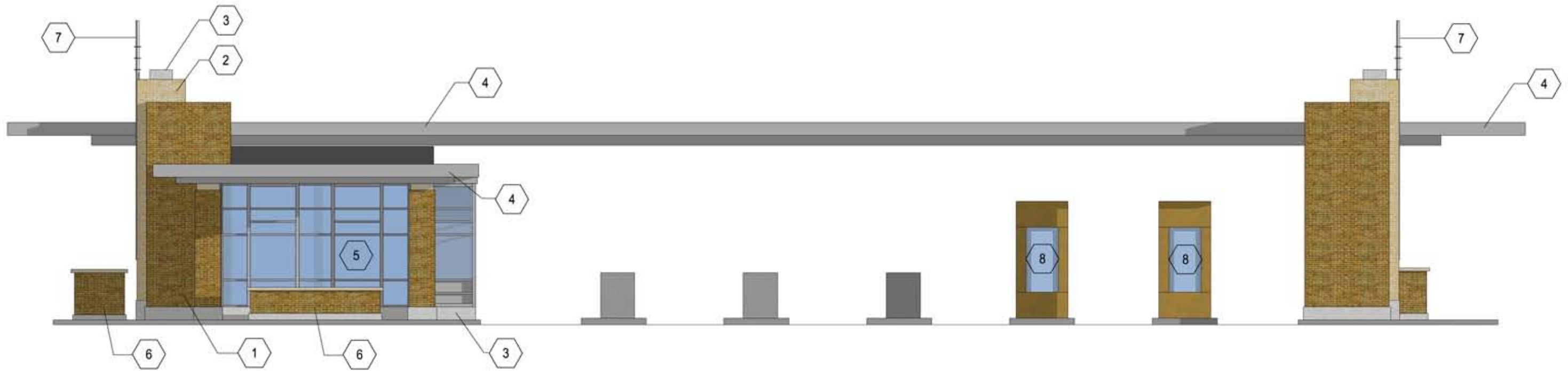
1	BRICK MASONRY TYPE #1
2	BRICK MASONRY TYPE #2
3	ARCHITECTURAL PRECAST CONCRETE- LIMESTONE FINISH
4	COMPOSITE ALUMINUM PANEL SYSTEM
5	ALUMINUM STOREFRONT GLAZING SYSTEM- CLEAR ANODIZED FINISH
6	EXTERIOR PLANTER- BRICK MASONRY TYPE #1
7	COPPER PIPE FINIAL
8	PRE-MANUFACTURED BOOTH, PAINTED TO MATCH BRICK TYPE #1
9	ALUMINUM DOOR- CLEAR ANODIZE FINISH TO MATCH STORFRONT GLAZING SYSTEM

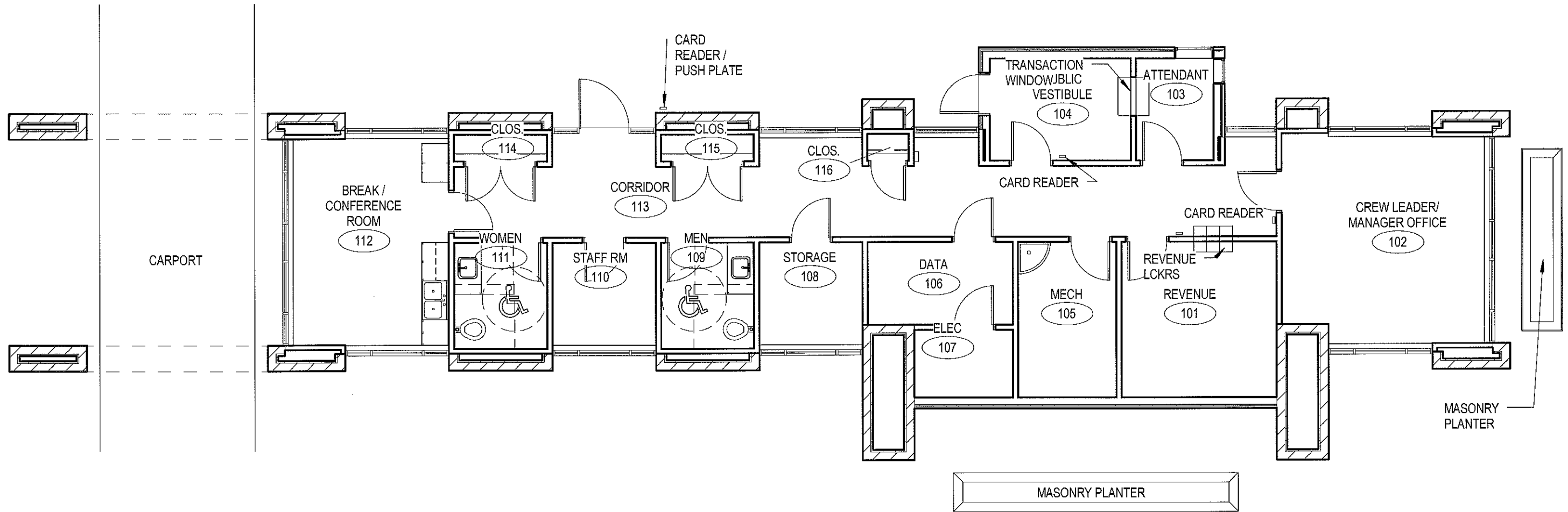




MATERIALS KEY:

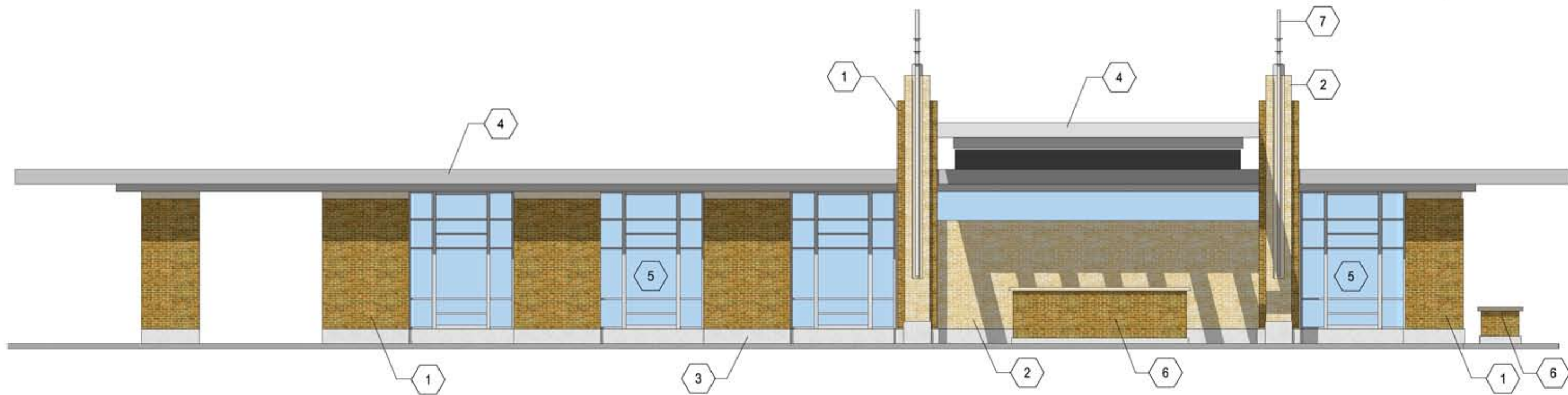
- 1 BRICK MASONRY TYPE #1
- 2 BRICK MASONRY TYPE #2
- 3 ARCHITECTURAL PRECAST CONCRETE- LIMESTONE FINISH
- 4 COMPOSITE ALUMINUM PANEL SYSTEM
- 5 ALUMINUM STOREFRONT GLAZING SYSTEM- CLEAR ANODIZED FINISH
- 6 EXTERIOR PLANTER- BRICK MASONRY TYPE #1
- 7 COPPER PIPE FINIAL
- 8 PRE-MANUFACTURED BOOTH. PAINTED TO MATCH BRICK TYPE #1
- 9 ALUMINUM DOOR- CLEAR ANODIZE FINISH TO MATCH STORFRONT GLAZING SYSTEM





MATERIALS KEY:

1	BRICK MASONRY TYPE #1
2	BRICK MASONRY TYPE #2
3	ARCHITECTURAL PRECAST CONCRETE- LIMESTONE FINISH
4	COMPOSITE ALUMINUM PANEL SYSTEM
5	ALUMINUM STOREFRONT GLAZING SYSTEM- CLEAR ANODIZED FINISH
6	EXTERIOR PLANTER- BRICK MASONRY TYPE #1
7	COPPER PIPE FINIAL
8	PRE-MANUFACTURED BOOTH. PAINTED TO MATCH BRICK TYPE #1
9	ALUMINUM DOOR- CLEAR ANODIZE FINISH TO MATCH STORFRONT GLAZING SYSTEM





Dane County Regional Airport - Existing Parking Structure

VISUAL CONTEXT: EXISTING STAIR TOWER AND SAIL



Dane County Regional Airport - Existing Parking Structure

VISUAL CONTEXT: EXISTING SOUTH EAST PERSPECTIVE



Dane County Regional Airport - Existing Parking Structure

VISUAL CONTEXT: EXISTING EAST ELEVATION



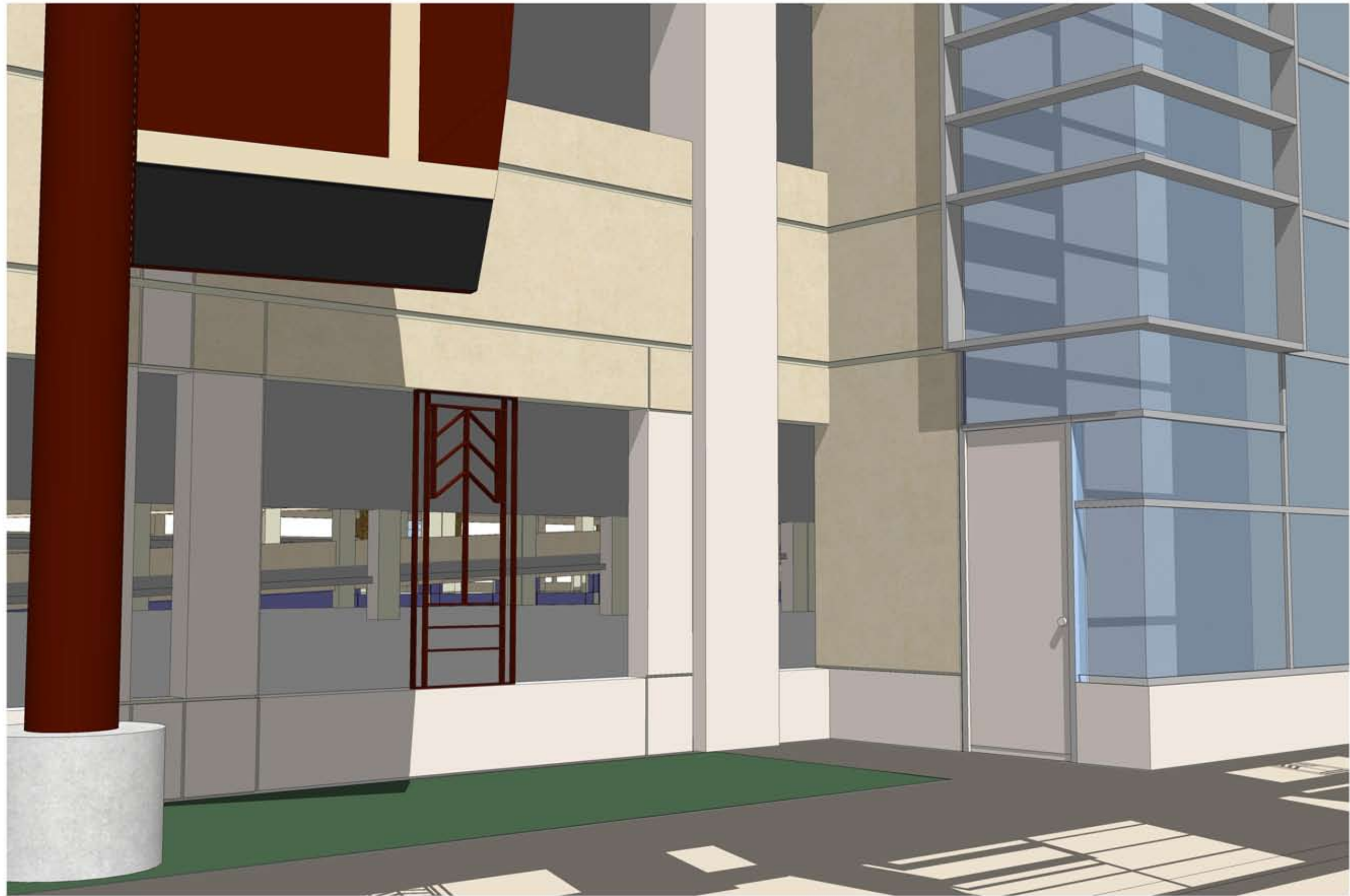
Dane County Regional Airport - Entry Plaza

SOUTH ELEVATION



Dane County Regional Airport - Existing Parking Structure

PROPOSED EAST ELEVATION



Dane County Regional Airport

4000 International Lane #3
Madison, Wisconsin 53704



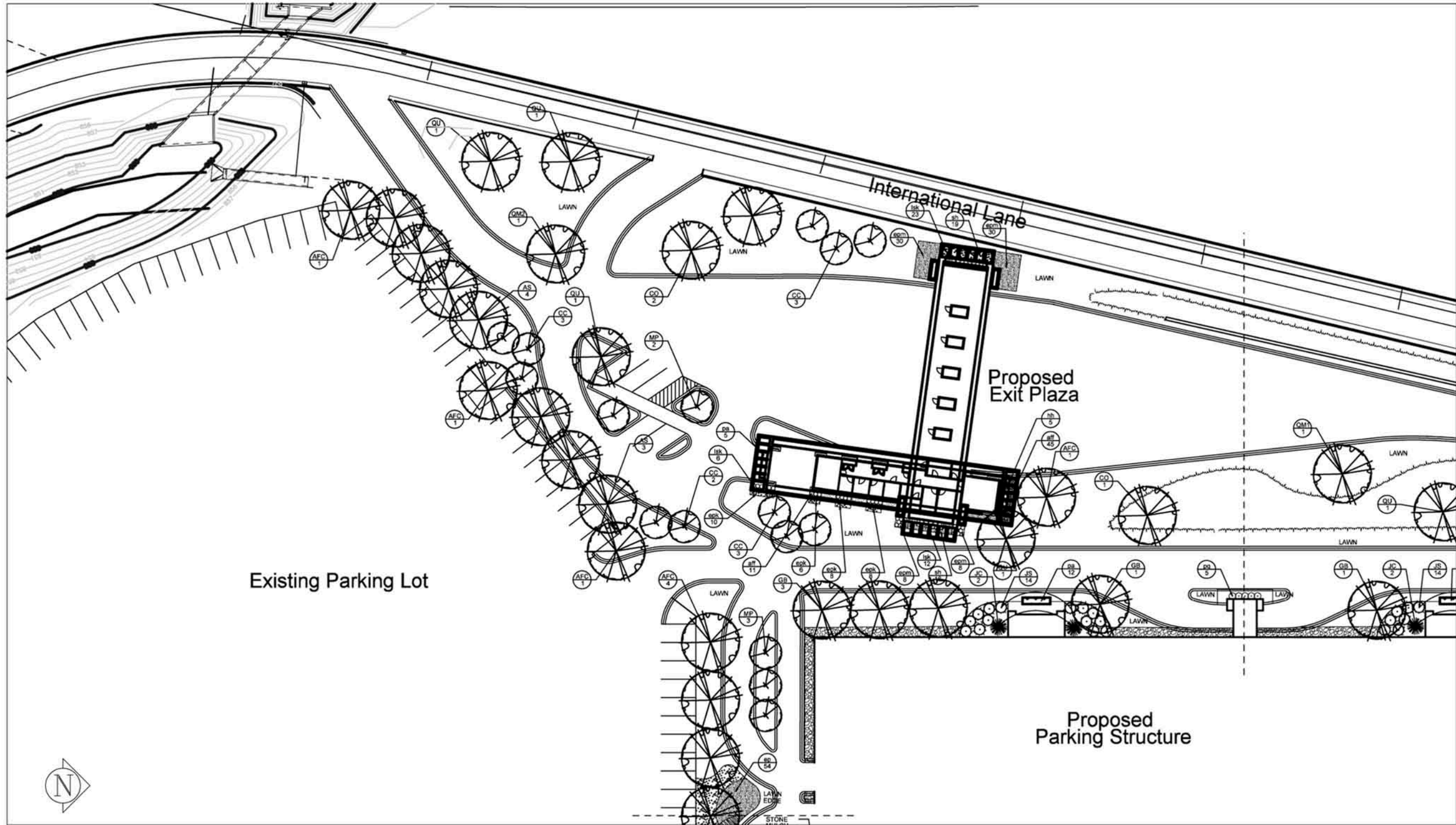
eppstein uhen : architects



Urban Design Committee Submittal

04-01-2007

PROJECT NUMBER: 306009-01

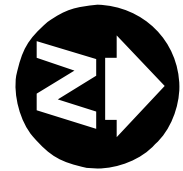


Existing Parking Lot

Proposed Exit Plaza

Proposed Parking Structure





0 50 100 150 200
Scale 1" = 100'

