

Northeast Area Plan



Northeast Area Plan Team

Dan McAuliffe

Angela Puerta

Jeff Gregger

Kirstie Laatsch

Lisa McNabola

Kevin Firchow



2/14/24 - Project update – Board of Park Commissioners

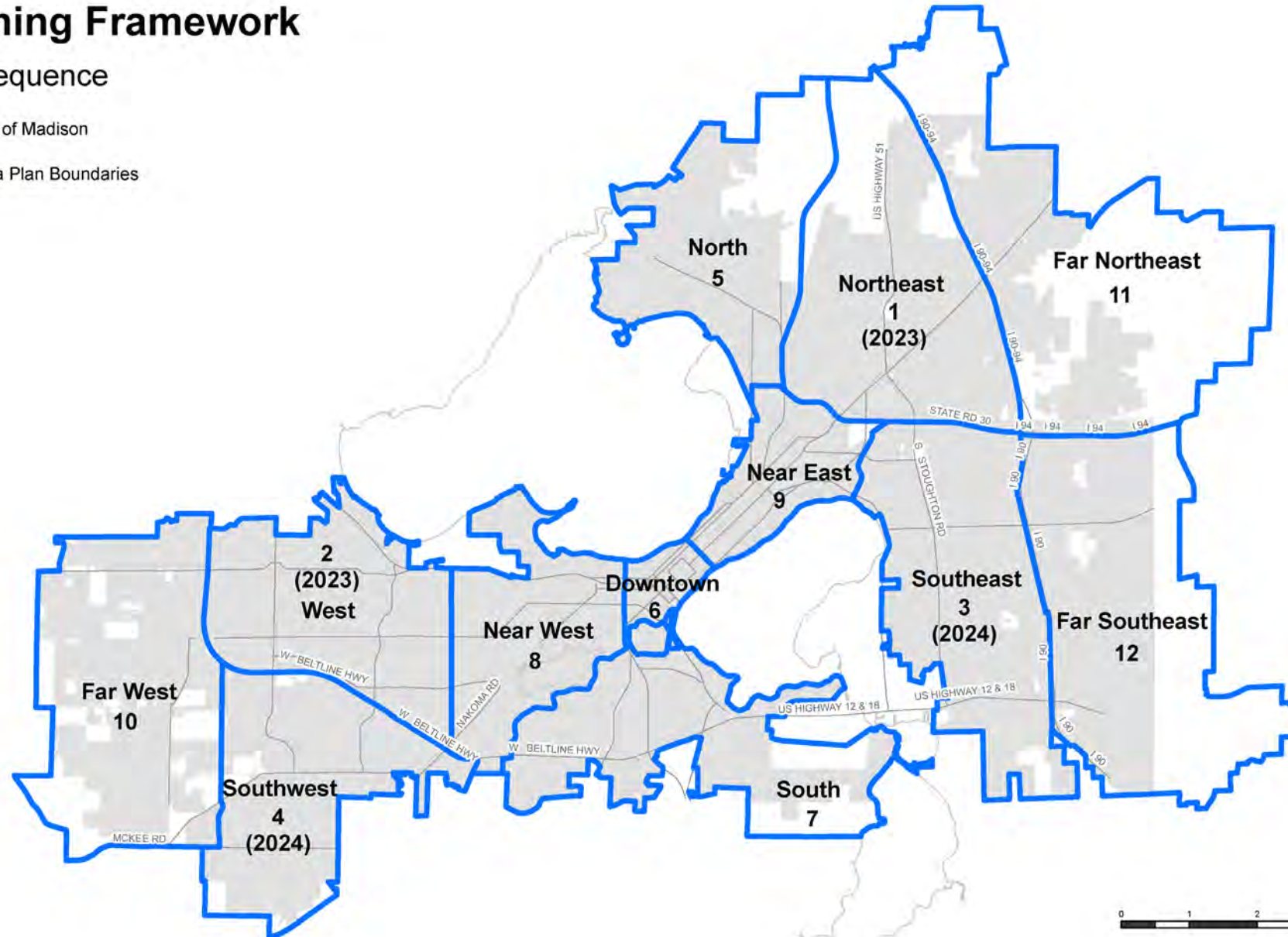
Planning Framework



Planning Framework

Plan Sequence

-  City of Madison
-  Area Plan Boundaries



Northeast Area

- 7,666 acres
- 14,790 residents
- 6,800 housing units
- 43.7% BIPOC
- 20,798 jobs



Meetings and Outreach



- January 31st meetings (virtual + in-person), 2023
- Multi-agency Open House - March 29, 2023
- Sandburg Elementary PTO - May 4, 2023
- Community Meetings (virtual + in-person) – May30/31, 2023
- Make Music Madison – June 21, 2023
- Westchester Gardens Block Party – June 24, 2023
- Sandburg Neighborhood Walk and Talk – July 12, 2023
- Northeast Connect Events – Aug 15 & 16, 2023
- Burke Height Walk and Talk – Sept 27, 2023
- Community Open House w DOT – December 18, 2023
- Art Workshop – Jan 24, 2024
- *Community Navigators*
- *Community Surveys, Commenting map, Interactive Initial Plan Draft*



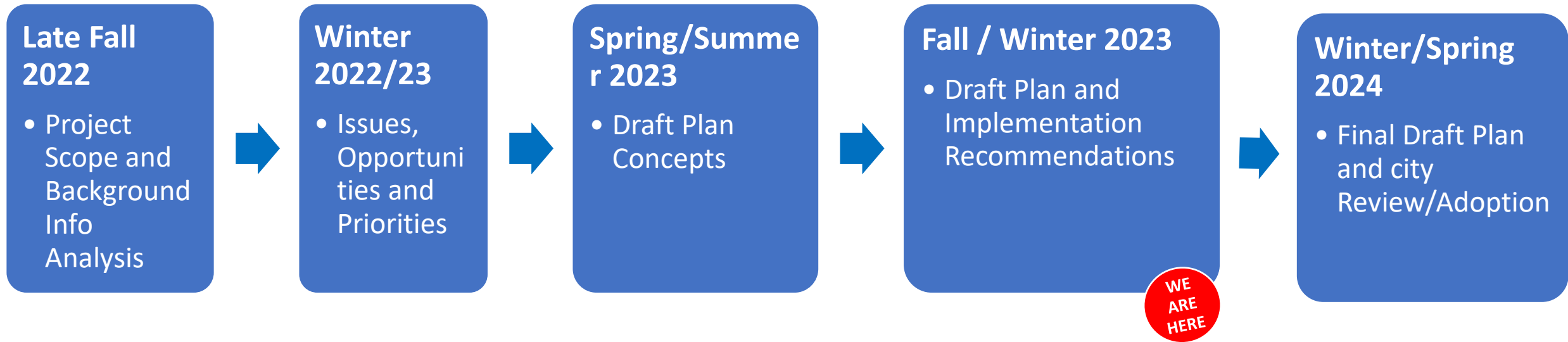
Themes in public comment



- Great parks and access to open spaces
- Excitement about BRT and E. Washington Redevelopment
- Desire for more walkable destinations
- Concern about housing affordability
- Fragmented bike network
- Excitement about Imagination Center
- Concern about homeless and impacts
- Safety: lighting improvements and neighborhood traffic management



Process and Recommendation Framework

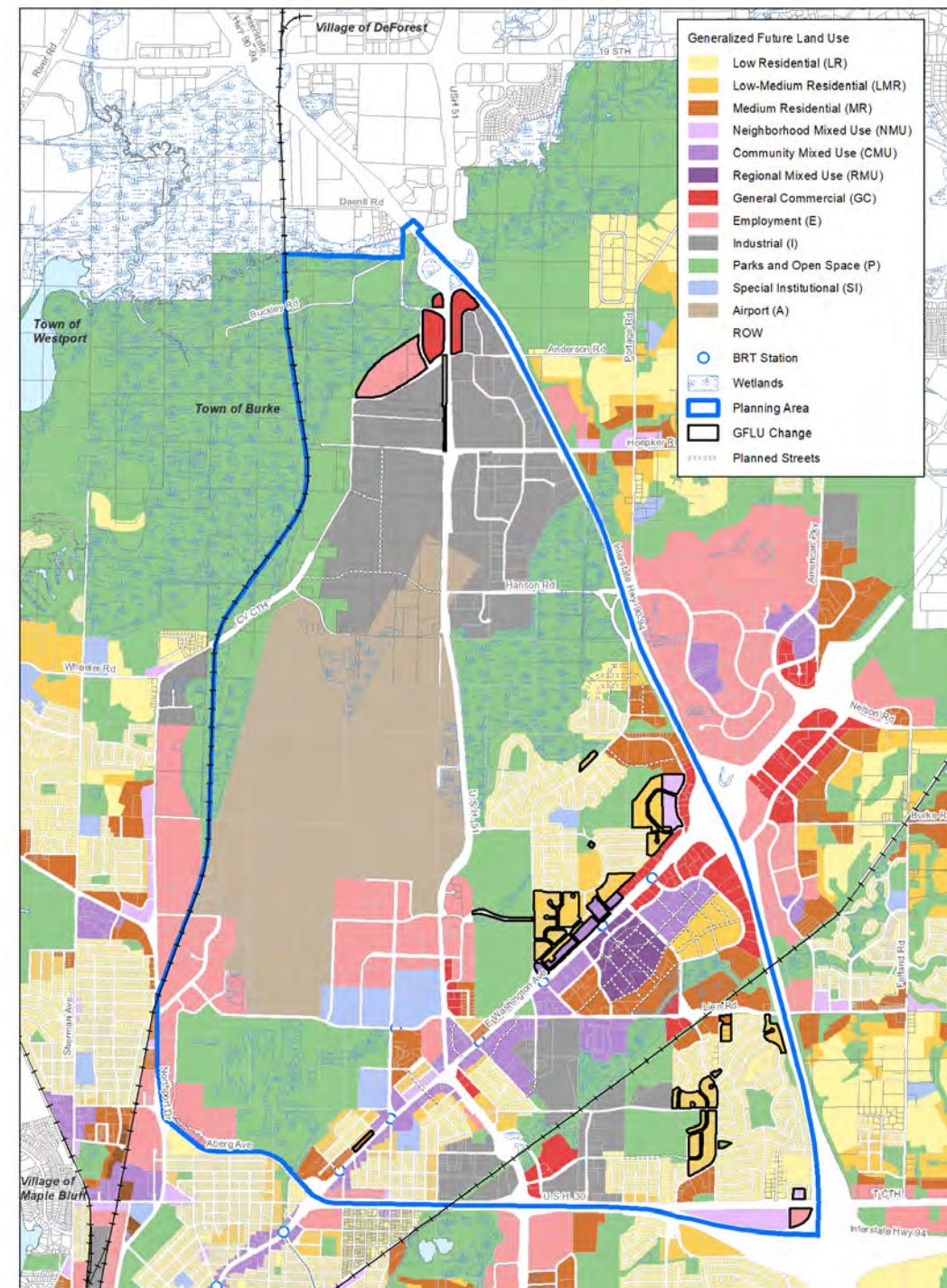


Northeast Area Plan: Chapters



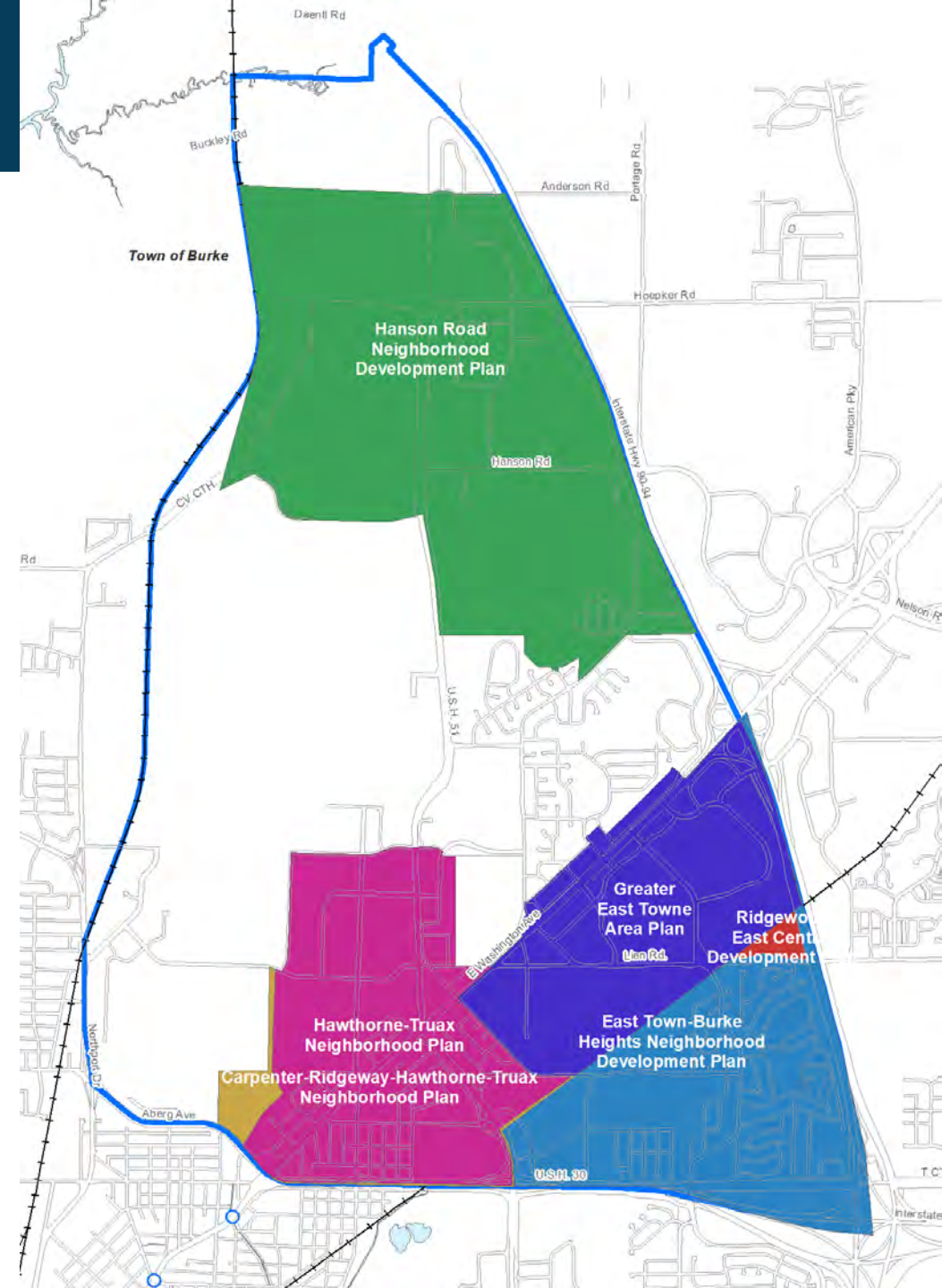
Land Use

- Because of recent plans, most major growth areas already addressed
- Recommended Changes:
 - Mixed-Use north of East Washington
 - Low-Medium Residential (missing middle) within neighborhoods
 - Commercial and Employment at CTH CV and Hwy 51

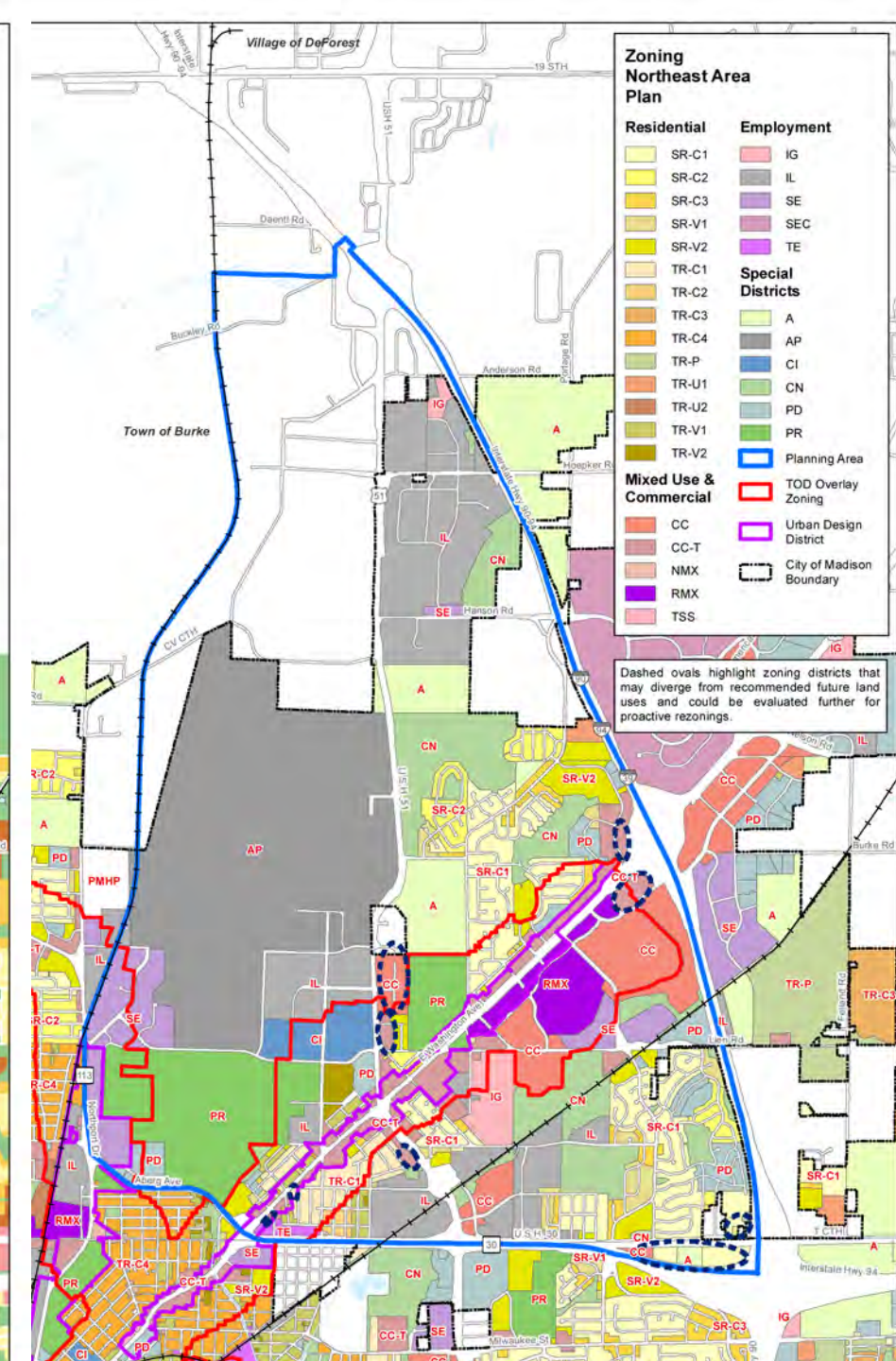
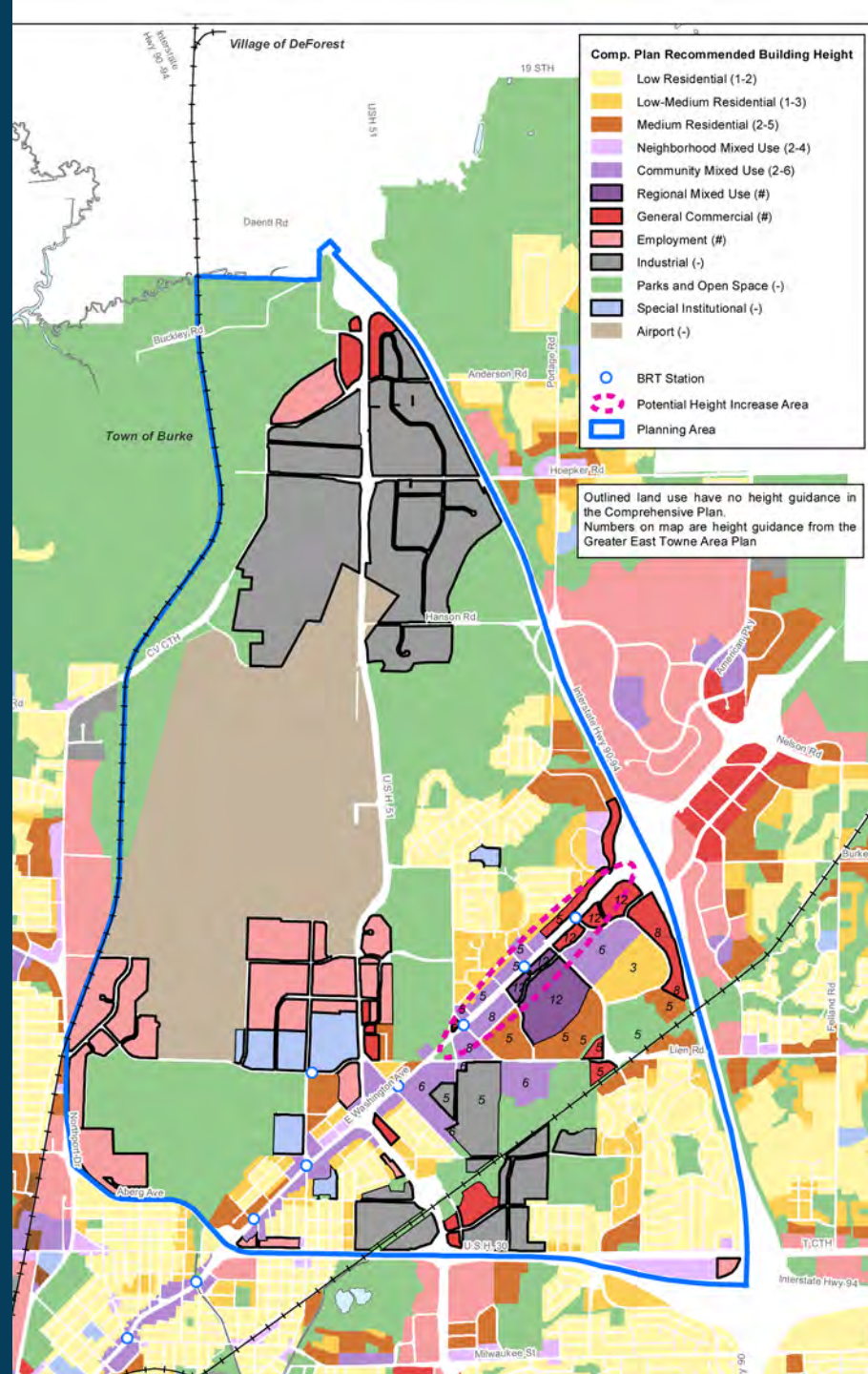


Existing Plan Evaluation

- Existing plans to be archived with adoption of Northeast Area Plan
 - Include relevant recommendations into Northeast Area Plan
 - Evaluation criteria
 - Place-specific; not citywide
 - Within the City's control
 - Consistent with current policies

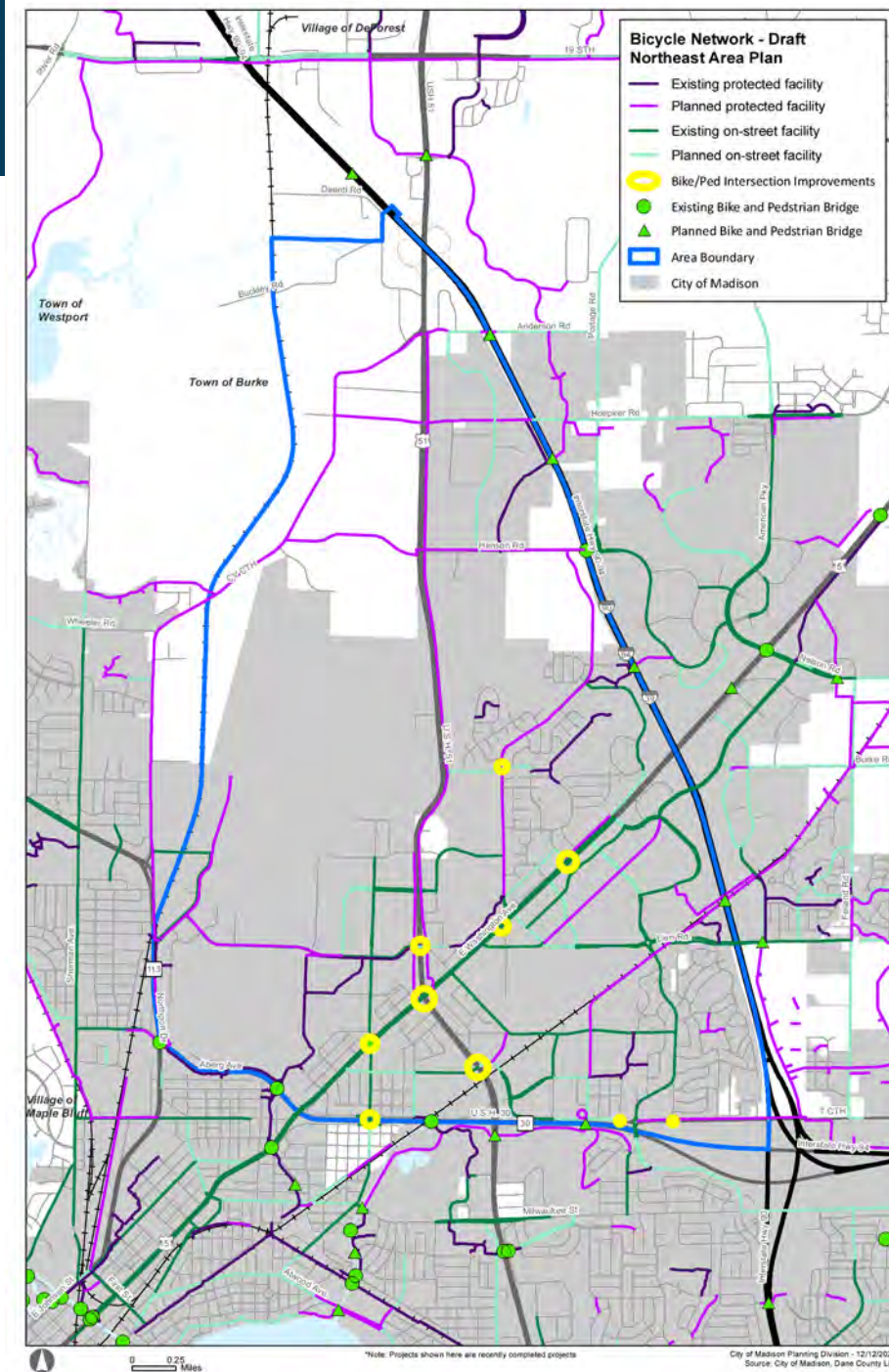
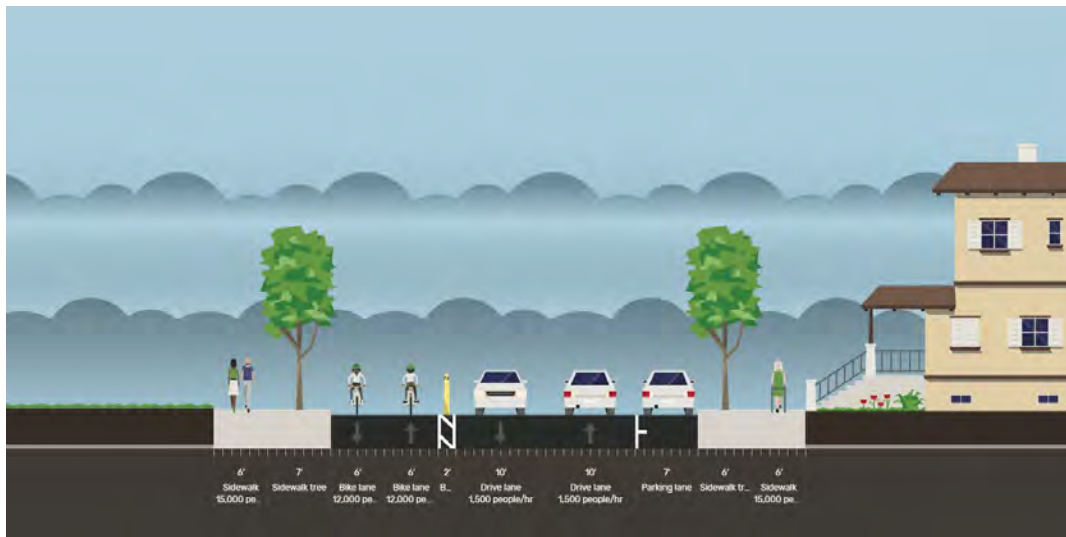


Land Use: Next Steps – Height map and Zoning



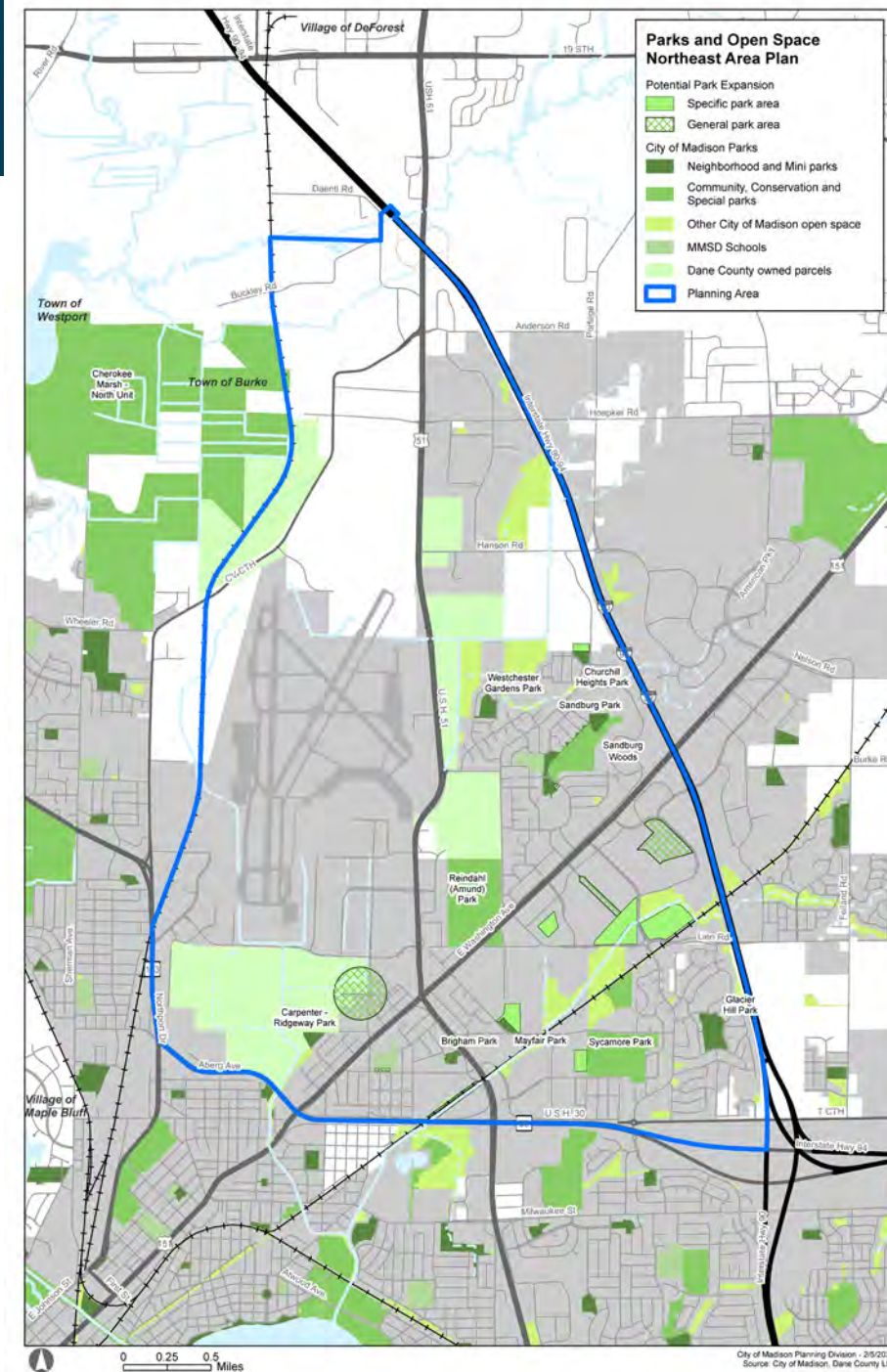
Transportation: Bike + Ped

- Addressing “fragmented network”
 - Improve crossings of Hwy 51
 - Better links for off-street paths
 - Improve important on-street routes



Green & Resilient

- New and expanded parks
- Change in approach in East Towne area – greater specificity



Green & Resilient



• East Towne new parks

Parks and Open Space Northeast Area Plan

Potential Park Expansion

- Specific park area
- General park area

City of Madison Parks

- Neighborhood and Mini parks
- Community, Conservation and Special parks
- Other City of Madison open space
- MMSD Schools
- Dane County owned parcels

- Planning Area



Green & Resilient



- Sycamore and Mayfair park expansion

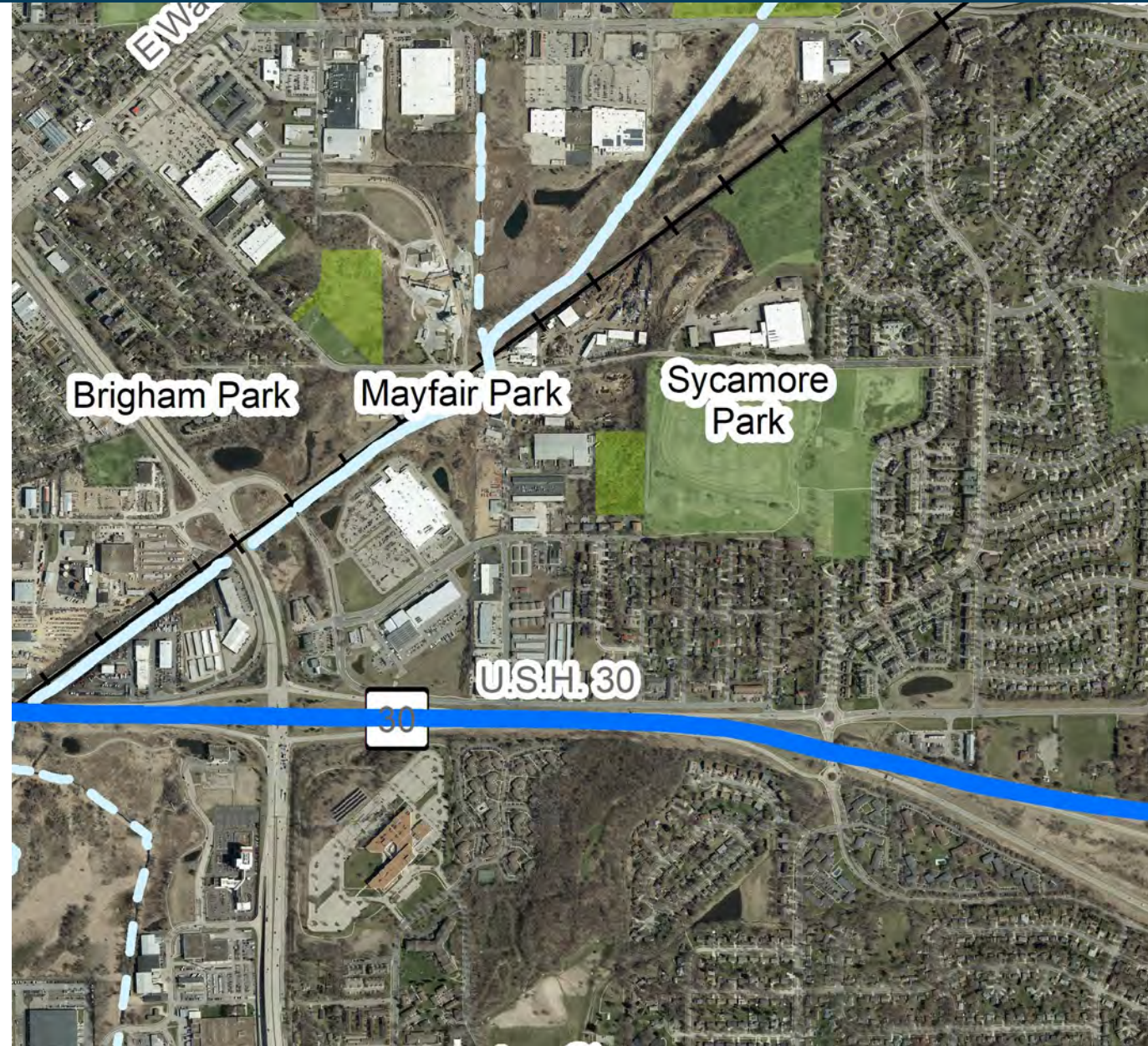
Parks and Open Space Northeast Area Plan

Potential Park Expansion

- Specific park area
- General park area

City of Madison Parks

- Neighborhood and Mini parks
- Community, Conservation and Special parks
- Other City of Madison open space
- MMSD Schools



Transportation: Streets



Neighborhood street network connections: Nakoosa Trail



Green & Resilient



- Truax new park area

Parks and Open Space Northeast Area Plan

Potential Park Expansion

- Specific park area
- General park area

City of Madison Parks

- Neighborhood and Mini parks
- Community, Conservation and Special parks
- Other City of Madison open space
- MMSD Schools
- Dane County owned parcels

- Planning Area



Green & Resilient

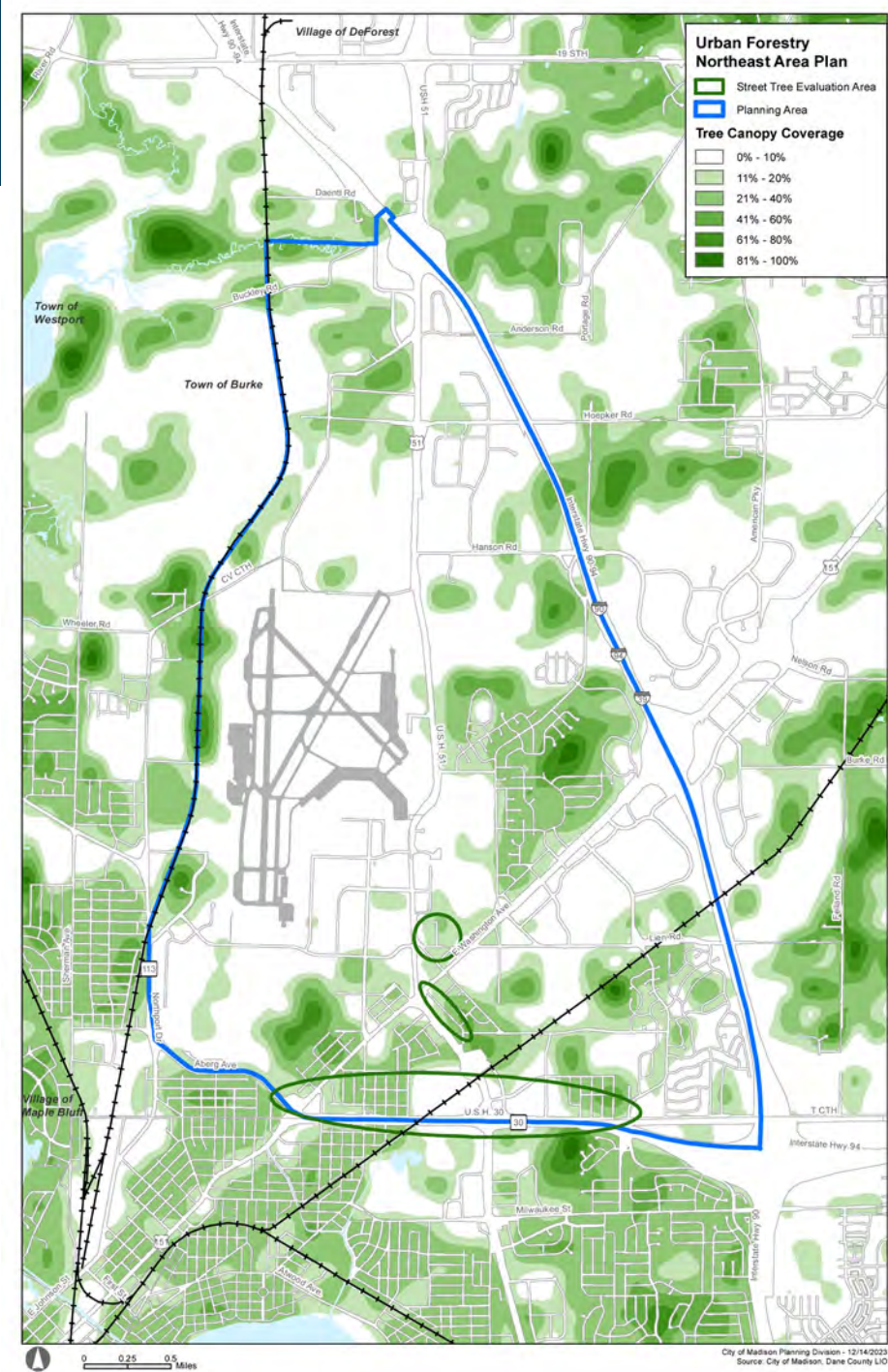


- Churchill Heights and Sandburg Park expansions



Green & Resilient

- Targeted forestry evaluations
- Well 15 PFAs filtration system



Community Action Strategy

Sandburg

Top 5	Community Action Project- in Order	Potential Location
1	Lighting and Safety	<p>Lighting</p> <ul style="list-style-type: none"> Bike and walking paths (Starkweather Creek Path, Sandburg Woods) <p>Safety: traffic calming and safer crossings along:</p> <ul style="list-style-type: none"> Portage Rd between E Wash and Reider Independence Ln Anniversary Ln Melody and Bartillion Clove and Basil Dwight Drive
2	Public Gathering Spaces	<ul style="list-style-type: none"> Sandburg Park Benches in Sandburg Woods
3	Community Garden	<ul style="list-style-type: none"> Sandburg Park
4	Shelters and Pavilions in Parks	<ul style="list-style-type: none"> Sandburg Park
5	Permanent Games in Parks	<ul style="list-style-type: none"> Sandburg Park Westchester Gardens Park



Community Action Strategy



Burke Heights

Top 5	Community Action Project- in Order	Potential Location
1	Lighting and Safety	<ul style="list-style-type: none"> Sycamore Park Neighborhoods surrounding Sycamore Park Speed limit signs along Sycamore and Mendota
2	Community Garden	<ul style="list-style-type: none"> Sycamore Park Fruit trees
3	Bike Pump Track	<ul style="list-style-type: none"> Mayfair Park
4	Permanent Games in Parks	<ul style="list-style-type: none"> Mayfair Park
5	Amphitheatres/Stages	<ul style="list-style-type: none"> Mayfair Park



Next Steps



- **Present draft document - April 2024**
- **Plan adoption process – May-June 2024**