



Madison Youth Arts

Jiffy Lube

Curtis St

N Ingersoll St

AlphaGraphics
Print shop

Proposed Sign Location

1050 E Washington Ave,
Madison, WI 53708

The QTI Group

CYCLEBAR

Mister Car Wash

Lyric Apartments

U.S. Highway 151

Forward Madison FC

City Dog Vet
& Grooming

April Aire

E Mifflin St

N Brearly St

E Washington Ave



NOTES:

1. See 2024 Specifications for details on sign materials and finishes.
2. Signage shall be installed in accordance with the International Building Code (IBC) and all applicable local codes.
3. Signage shall be installed in accordance with the International Building Code (IBC) and all applicable local codes.
4. Signage shall be installed in accordance with the International Building Code (IBC) and all applicable local codes.

LEGEND:

- Orange square: Signage materials and finishes.
- Yellow square: Signage materials and finishes.
- Blue square: Signage materials and finishes.

INSTALLATION SHALL BE IN ACCORDANCE WITH THE



See elevation 1/10/24 Rev. 01



CUSTOMER APPROVAL: _____ **DATE:** _____ **LANDSCAPE APPROVAL:** _____ **DATE:** _____

I hereby approve this sign design and installation. I understand that this sign is subject to the City of Chicago's Signage Code and may not be installed or maintained in compliance with the Code.





View 1



View 2



View 3



makingyourbusiness.com
 200 N. 1st Street, Suite 100, Seattle, WA 98101

CUSTOMER APPROVAL: _____ DATE: _____

LANDLORD APPROVAL: _____ DATE: _____

I hereby authorize the use of my name and likeness for the purpose of the above-captioned project. I understand that my name and likeness may be used in any manner, including but not limited to, advertising, promotional, and public relations purposes, and I agree to indemnify and hold the advertiser harmless from and against all claims, damages, and expenses, including reasonable attorneys' fees, that may be asserted against or incurred by the advertiser, its agency, or its service providers in connection with the above-captioned project.



FETCH REWARDS - 1060 E. WASHINGTON

SECTION 2



South Arrow: 1/4" = 1'-0"



1050 10th Street NW - Fetch Rewards - 1050 Washington Street - 1050 Washington Ave.

DATE: 10/15/2024
 DESIGN APPROVAL: _____ SEAL: _____ LANDSCAPE APPROVAL: _____ SEAL: _____

1. The above information is correct. 2. I am a duly licensed professional engineer. 3. I am a duly licensed professional landscape architect. 4. I am a duly licensed professional architect.

WCI

FETCH REWARDS - 1050 E. WASHINGTON



Scale: 1/8" = 1'-0"



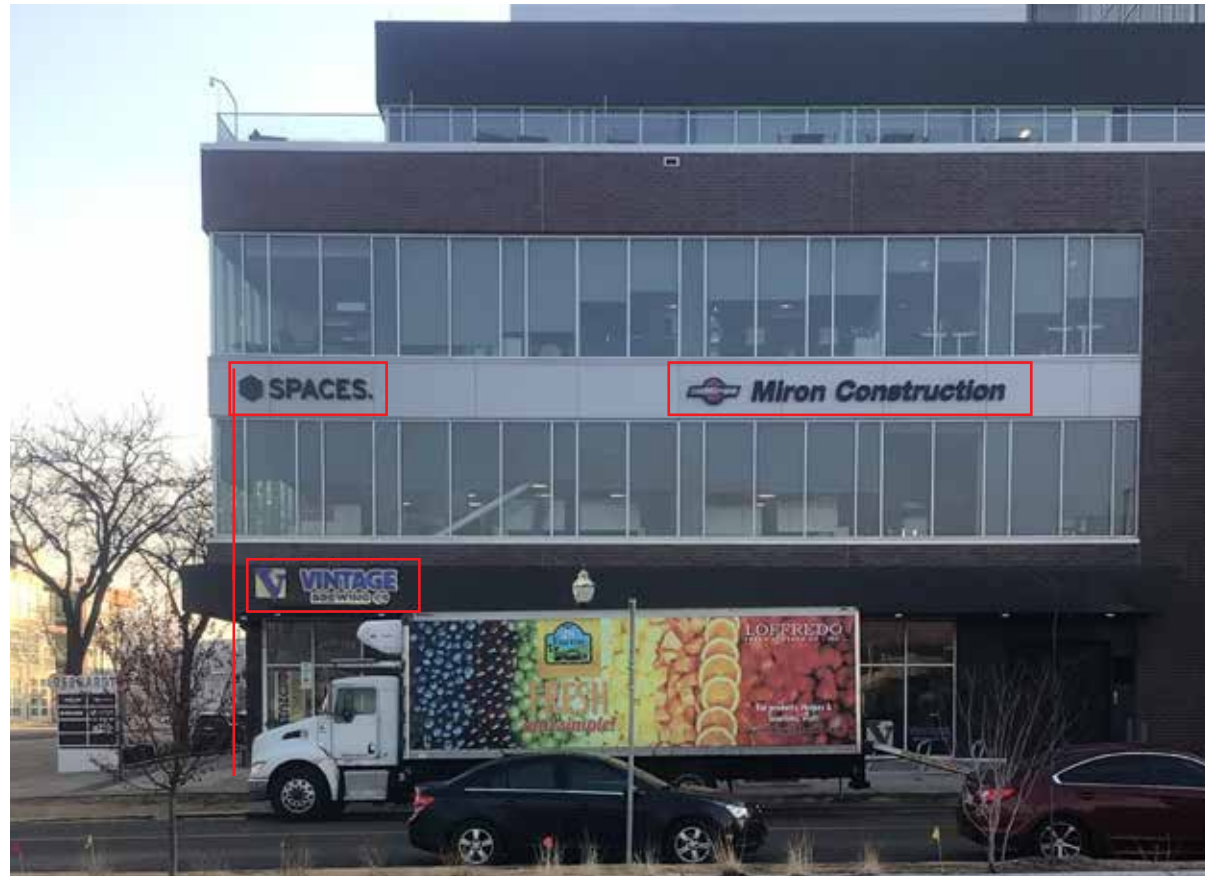
OWNER APPROVAL	DATE	LANDING APPROVAL	DATE





AC Hotel - One N Webster St, Madison, WI 53703

GEBHARDT BUILDING



SPARK BUILDING



1st floor signs are approx. at 11' in height to top.

Vintage Brewery Sign is mounted on the under 10' in height.

2nd floor signs are approx. at 30' in height to top.