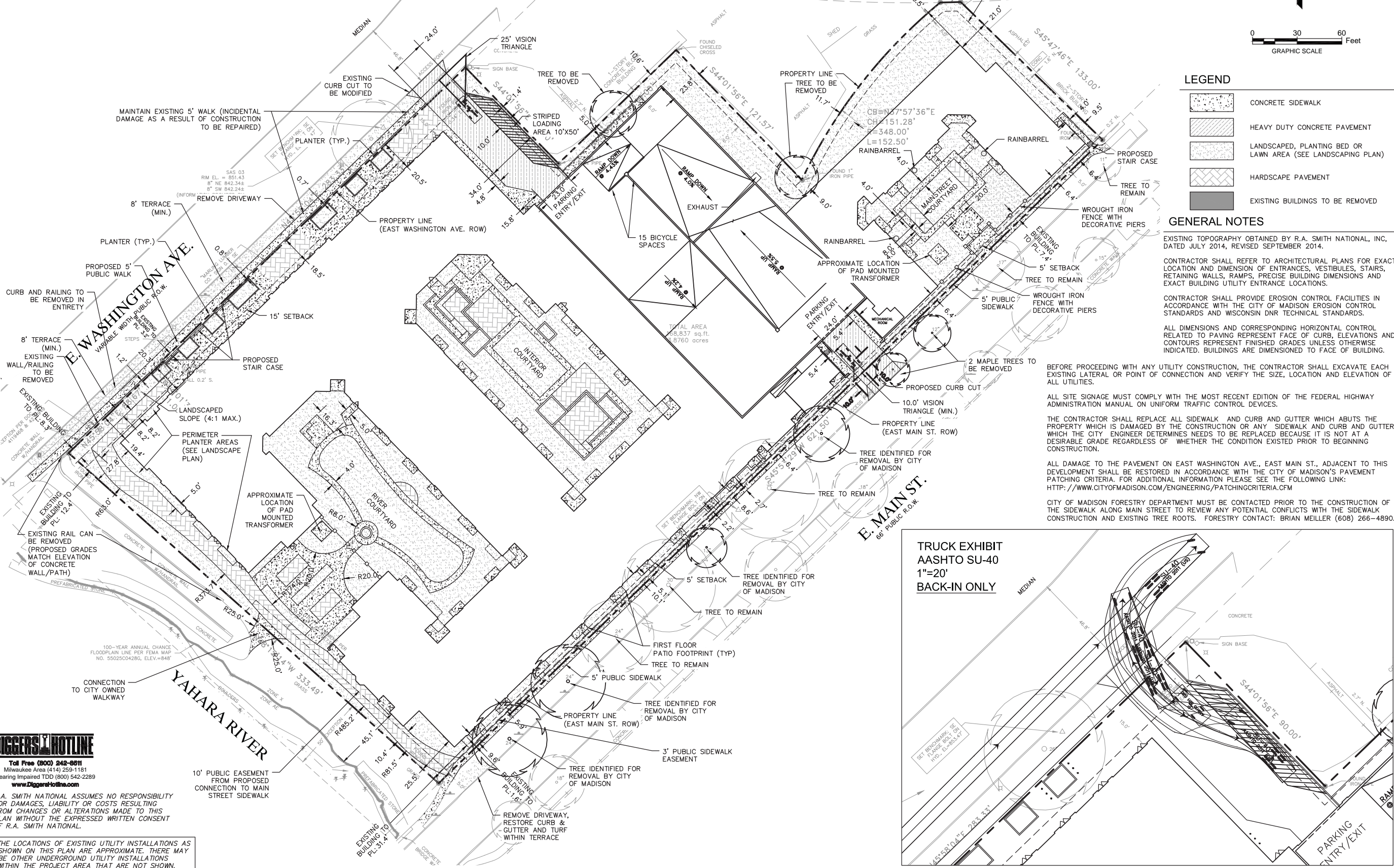


SITE CALCULATIONS

	ACRES	SQUARE FEET	% OF OVERALL DEVELOPMENT
TOTAL PARCEL AREA	3.88	168,837	100%
TOTAL DISTURBED AREA	4.08	177,751	
EXISTING IMPERVIOUS AREA	3.72	162,016	
PROPOSED IMPERVIOUS AREA	2.99	130,103	77.1%
REMAINING GREENSPACE	0.89	38,734	22.9%
USEABLE OPEN SPACE	0.69	30,331	18.0%



LEGEND

- CONCRETE SIDEWALK
- HEAVY DUTY CONCRETE PAVEMENT
- LANDSCAPED, PLANTING BED OR LAWN AREA (SEE LANDSCAPING PLAN)
- HARDSCAPE PAVEMENT
- EXISTING BUILDINGS TO BE REMOVED

GENERAL NOTES

EXISTING TOPOGRAPHY OBTAINED BY R.A. SMITH NATIONAL, INC. DATED JULY 2014, REVISED SEPTEMBER 2014.

CONTRACTOR SHALL REFER TO ARCHITECTURAL PLANS FOR EXACT LOCATION AND DIMENSION OF ENTRANCES, VESTIBULES, STAIRS, RETAINING WALLS, RAMPS, PRECISE BUILDING DIMENSIONS AND EXACT BUILDING UTILITY ENTRANCE LOCATIONS.

CONTRACTOR SHALL PROVIDE EROSION CONTROL FACILITIES IN ACCORDANCE WITH THE CITY OF MADISON EROSION CONTROL STANDARDS AND WISCONSIN DNR TECHNICAL STANDARDS.

ALL DIMENSIONS AND CORRESPONDING HORIZONTAL CONTROL RELATED TO PAVING REPRESENT FACE OF CURB, ELEVATIONS AND CONTOURS REPRESENT FINISHED GRADES UNLESS OTHERWISE INDICATED. BUILDINGS ARE DIMENSIONED TO FACE OF BUILDING.

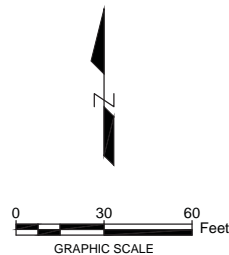
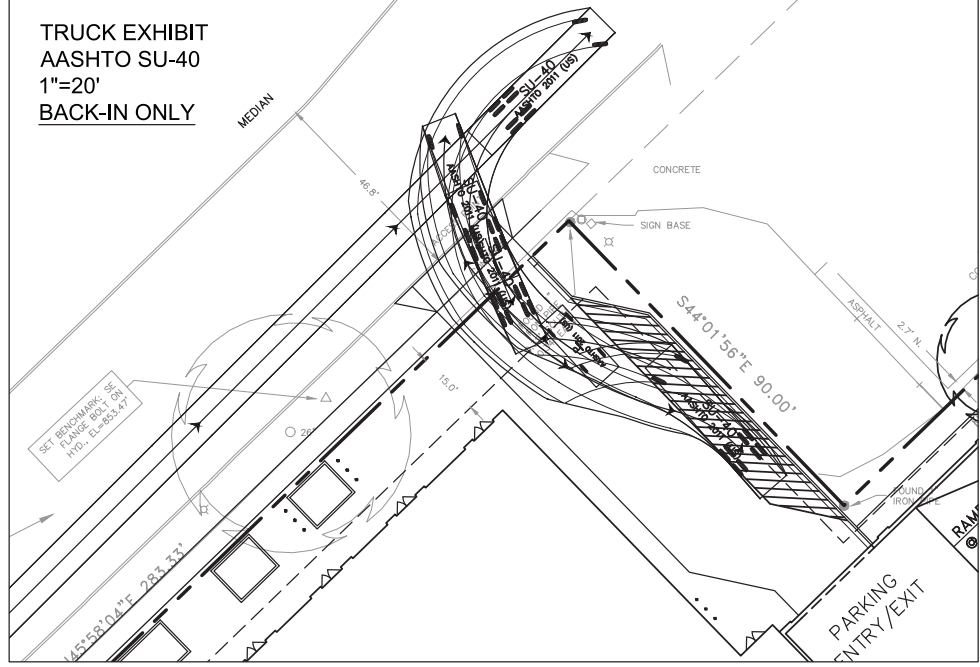
BEFORE PROCEEDING WITH ANY UTILITY CONSTRUCTION, THE CONTRACTOR SHALL EXCAVATE EACH EXISTING LATERAL OR POINT OF CONNECTION AND VERIFY THE SIZE, LOCATION AND ELEVATION OF ALL UTILITIES.

ALL SITE SIGNAGE MUST COMPLY WITH THE MOST RECENT EDITION OF THE FEDERAL HIGHWAY ADMINISTRATION MANUAL ON UNIFORM TRAFFIC CONTROL DEVICES.

THE CONTRACTOR SHALL REPLACE ALL SIDEWALK AND CURB AND GUTTER WHICH ABUTS THE PROPERTY WHICH IS DAMAGED BY THE CONSTRUCTION OR ANY SIDEWALK AND CURB AND GUTTER WHICH THE CITY ENGINEER DETERMINES NEEDS TO BE REPLACED BECAUSE IT IS NOT AT A DESIRABLE GRADE REGARDLESS OF WHETHER THE CONDITION EXISTED PRIOR TO BEGINNING CONSTRUCTION.

ALL DAMAGE TO THE PAVEMENT ON EAST WASHINGTON AVE., EAST MAIN ST., ADJACENT TO THIS DEVELOPMENT SHALL BE RESTORED IN ACCORDANCE WITH THE CITY OF MADISON'S PAVEMENT PATCHING CRITERIA. FOR ADDITIONAL INFORMATION PLEASE SEE THE FOLLOWING LINK: [HTTP://WWW.CITYOFMADISON.COM/ENGINEERING/PATCHINGCRITERIA.CFM](http://www.cityofmadison.com/engineering/patchingcriteria.cfm)

CITY OF MADISON FORESTRY DEPARTMENT MUST BE CONTACTED PRIOR TO THE CONSTRUCTION OF THE SIDEWALK ALONG MAIN STREET TO REVIEW ANY POTENTIAL CONFLICTS WITH THE SIDEWALK CONSTRUCTION AND EXISTING TREE ROOTS. FORESTRY CONTACT: BRIAN MEILLER (608) 266-4890.



DESCRIPTION	DATE

R.A. Smith National
Beyond Surveying and Engineering
 www.rasmithnational.com

1801 WASHINGTON
 CITY OF MADISON, WI
 DETAILED SITE PLAN

© COPYRIGHT 2016 R.A. Smith National, Inc.
DATE: 07/27/2016
SCALE: 1" = 30'
JOB NO. 3150290
PROJECT MANAGER: MICHAEL A. BACH, P.E.
DESIGNED BY:
CHECKED BY:
SHEET NUMBER C202

DIGGERS HOTLINE
 Toll Free (800) 242-8811
 Milwaukee Area (414) 259-1181
 Hearing Impaired TDD (608) 542-2289
 www.DiggersHotline.com

R.A. SMITH NATIONAL ASSUMES NO RESPONSIBILITY FOR DAMAGES, LIABILITY OR COSTS RESULTING FROM CHANGES OR ALTERATIONS MADE TO THIS PLAN WITHOUT THE EXPRESSED WRITTEN CONSENT OF R.A. SMITH NATIONAL.

THE LOCATIONS OF EXISTING UTILITY INSTALLATIONS AS SHOWN ON THIS PLAN ARE APPROXIMATE. THERE MAY BE OTHER UNDERGROUND UTILITY INSTALLATIONS WITHIN THE PROJECT AREA THAT ARE NOT SHOWN.