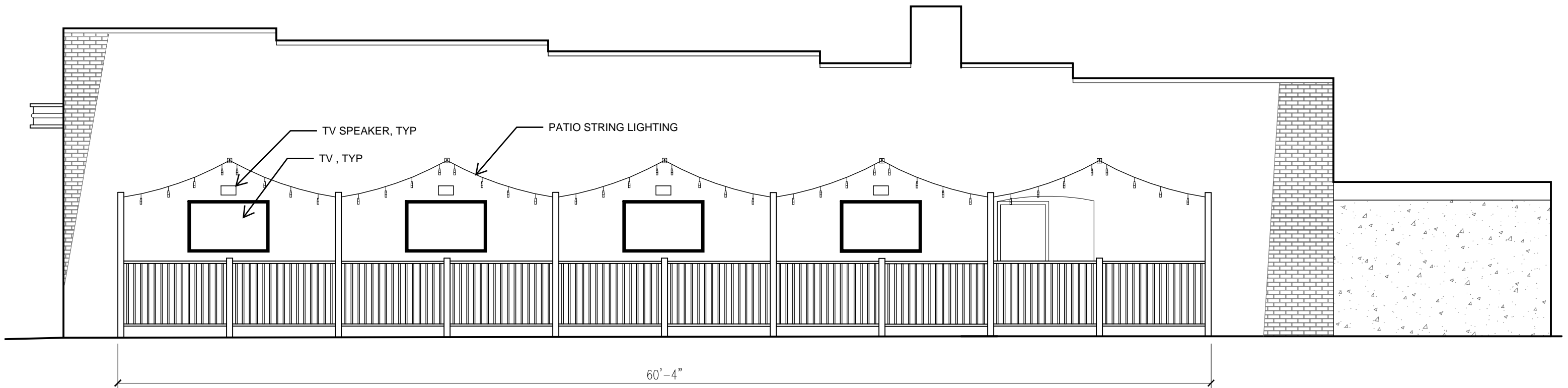
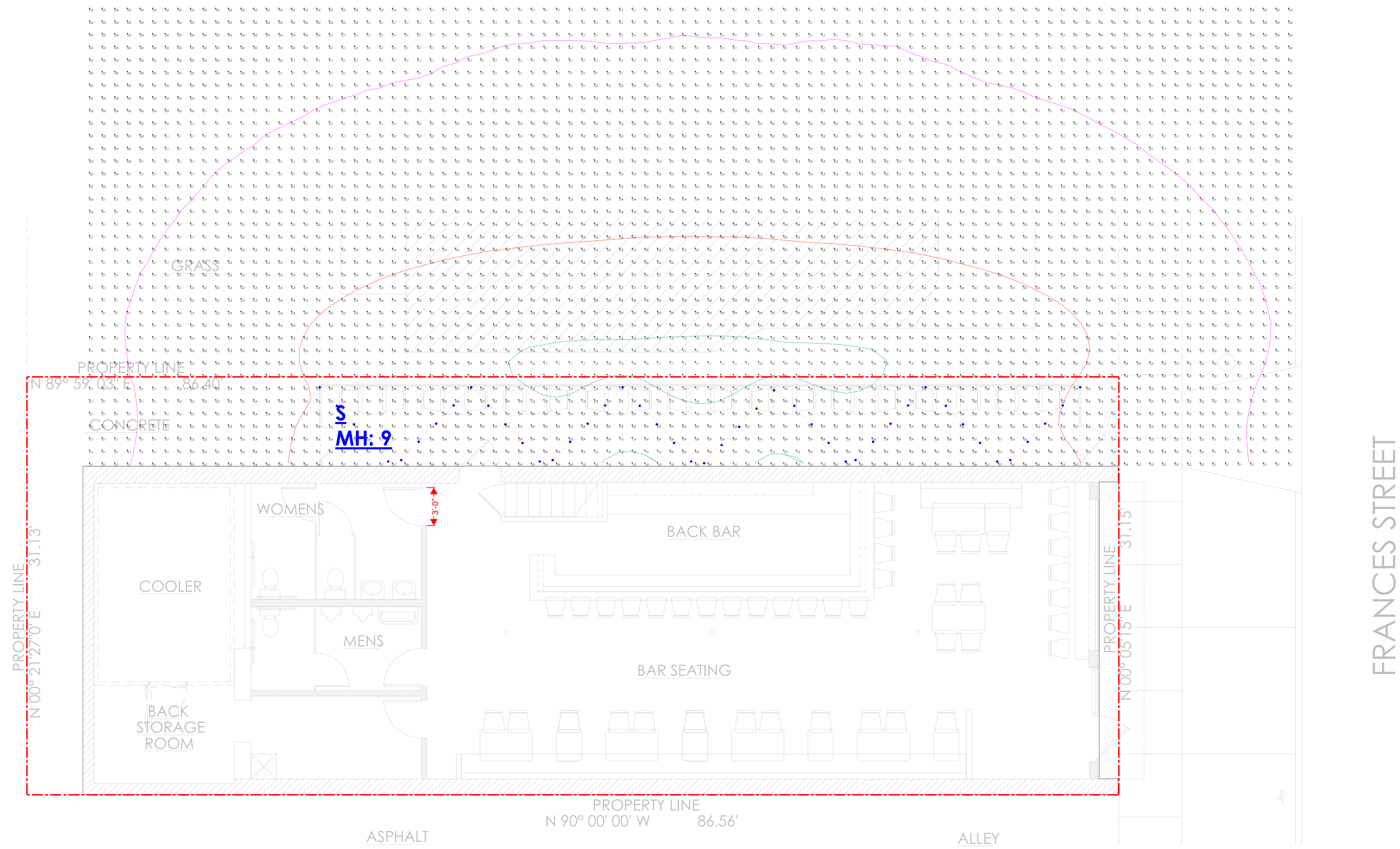


FRANCES STREET



FRONT ELEVATION





| Luminaire Schedule | | | | | | | | | |
|--------------------|-----|-------|-----------------|-------------|-------------|-------|------------------|-----------------|--|
| Symbol | Qty | Label | Manufacturer | Description | Arrangement | LLF | Luminaire Lumens | Luminaire Watts | |
| | 1 | S | ENBRIGHTEN VIBE | (2) #86128 | GROUP | 0.900 | N.A. | N.A. | |

| Calculation Summary | | | | | | | | | |
|---------------------|-------------|-------|------|-----|-----|---------|---------|--|--|
| Label | CalcType | Units | Avg | Max | Min | Avg/Min | Max/Min | | |
| PATIO | Illuminance | Fc | 0.36 | 1.1 | 0.0 | N.A. | N.A. | | |

1. STANDARD REFLECTANCE OF 80/50/20 UNLESS NOTED OTHERWISE.
 2. NOT A CONSTRUCTION DOCUMENT- FOR DESIGN PURPOSES ONLY.
 3. STANDARD INDOOR CALC POINTS @ 30' AFF UNLESS NOTED OTHERWISE.
 4. STANDARD OUTDOOR CALC POINTS @ GRADE UNLESS NOTED OTHERWISE.
 5. EGRESS CALC POINTS @ 0'-0" AFF.
 6. PHOTOMETRICS ARE ESTIMATED LIGHTING CALCULATIONS.
 7. VIKING ELECTRIC ASSUMES NO RESPONSIBILITY FOR INSTALLED LIGHT LEVELS DUE TO FIELD CONDITIONS.
 8. VIKING ELECTRIC NOT RESPONSIBLE FOR FINAL REVIEW OF CODE REQUIREMENTS.

| # | Date | Comments |
|---|------|----------|
| | | |
| | | |

| Revisions |
|-----------|
| |
| |

Drawn By: MB
 Project #: 172771
 Date: 3/10/2026
 Scale: 1/4" = 1'-0"

PHOTOMETRIC SITE PLAN
 JAY'S BAR
 MADISON, WI

Enbrighten VIBE Color-Changing LED Cafe Lights

24 Bulbs, 48ft. Black Cord



2.4GHz
Wi-Fi Certified
Longer range, better coverage
Dual- and tri-band router compatible

ALL-WEATHER
IP65 RATED

ETL
Intertek

Easy Installation and Flexible Mounting Options
Mount on eaves, pergolas, patios and more.
(Mounting hardware not included)

► 12 Lights, 24ft.

24.00in.

7.80in.

4.10in.

1.60in.

Heavy-duty cord

120V | LED

Electrical Ratings
Input: 120 V, 50/60 Hz

| Model No. | Input watt, Max. | Location Use |
|---------------|------------------|--------------|
| CLRB/*/6/*/* | 6W | Wet |
| CLRB/*/9/*/* | 9W | |
| CLRB/*/12/*/* | 12W | |
| CLRB/*/18/*/* | 17W | |
| CLRB/*/24/*/* | 23W | |
| CLRB/*/3/*/* | 3W | |
| CLRB/*/4/*/* | 4W | |
| CLRB/*/8/*/* | 8W | |
| CLRB/*/16/*/* | 15W | |