

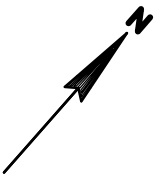
ID: 5992-09-15 IS FOR WATER MAIN CONSTRUCTION
ID: 5992-09-16 IS FOR SANITARY SEWER CONSTRUCTION

2

2

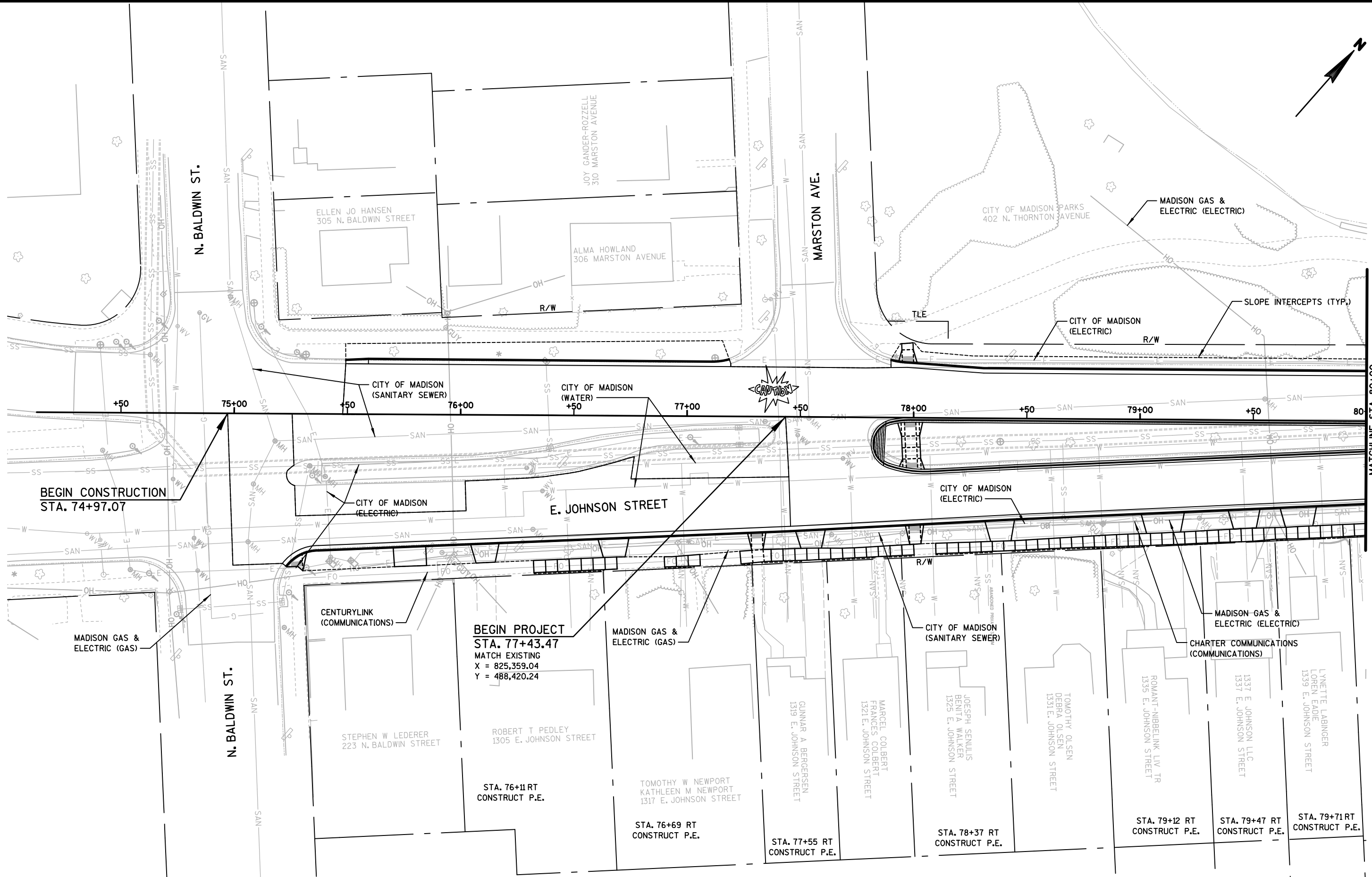


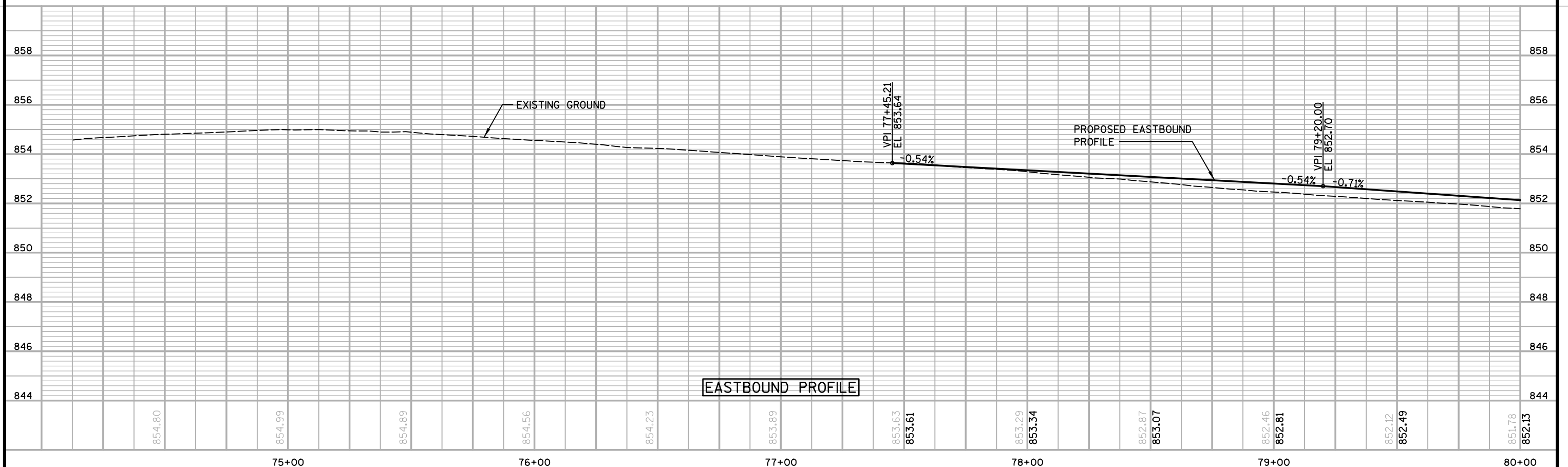
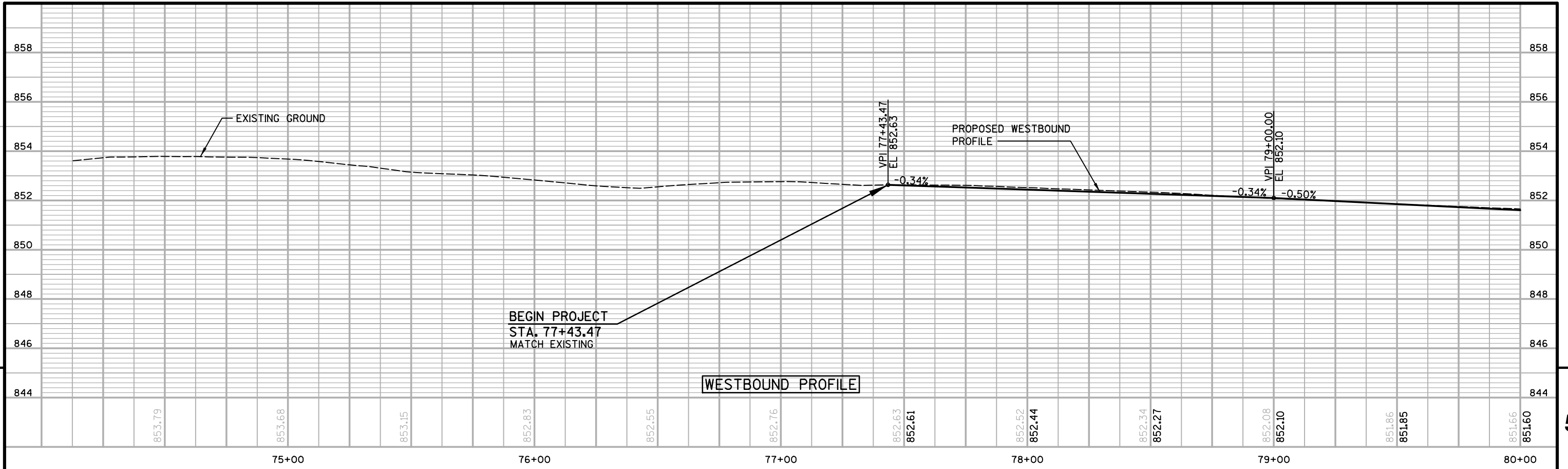
PROJECT NO: 5992-09-14/15/16	HWY: E. JOHNSON STREET	COUNTY: DANE	PROJECT OVERVIEW	SHEET 003	E
------------------------------	------------------------	--------------	------------------	-----------	---

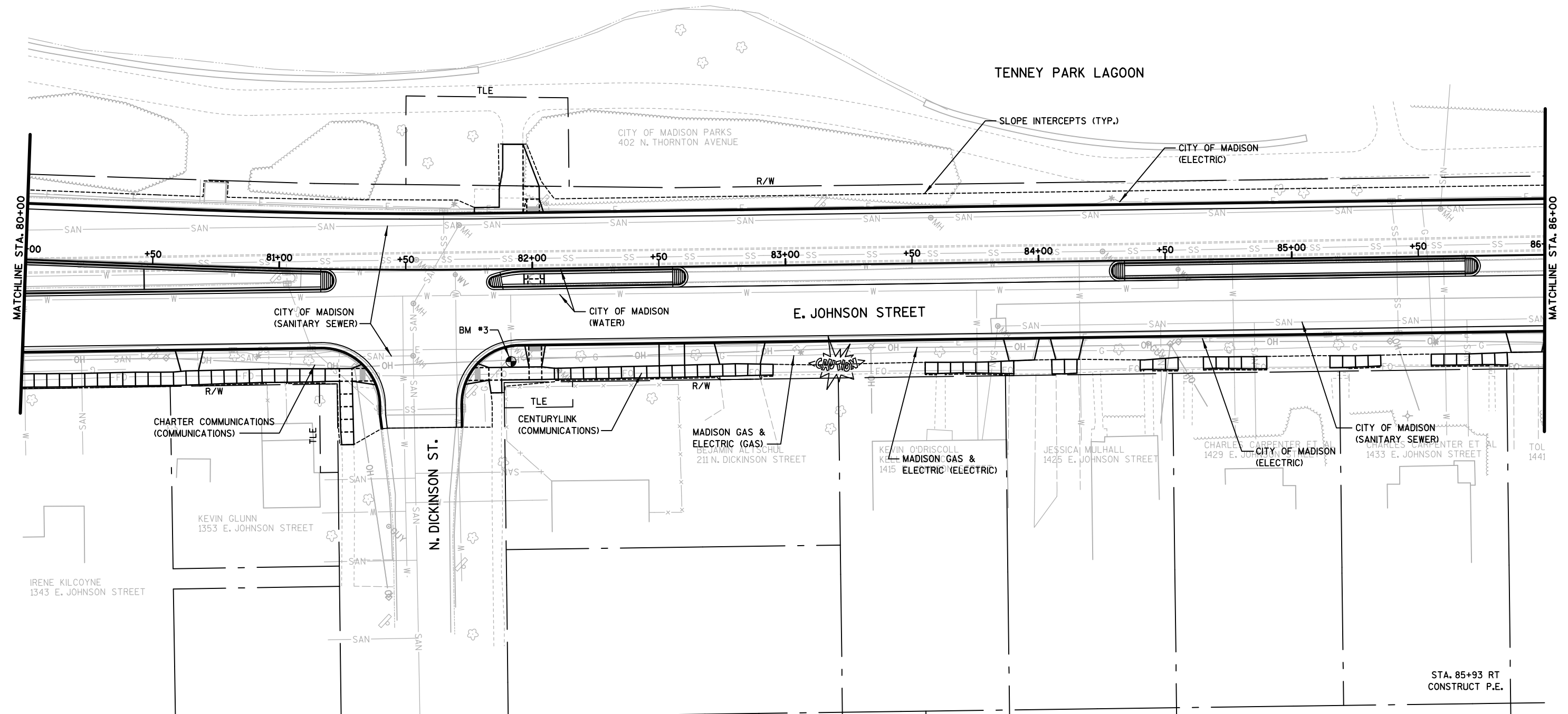
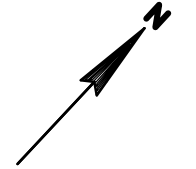


5

5







STA. 80+66 RT
CONSTRUCT P.E.

STA. 82+82 RT
CONSTRUCT P.E.

STA. 83+93 RT
CONSTRUCT P.E.

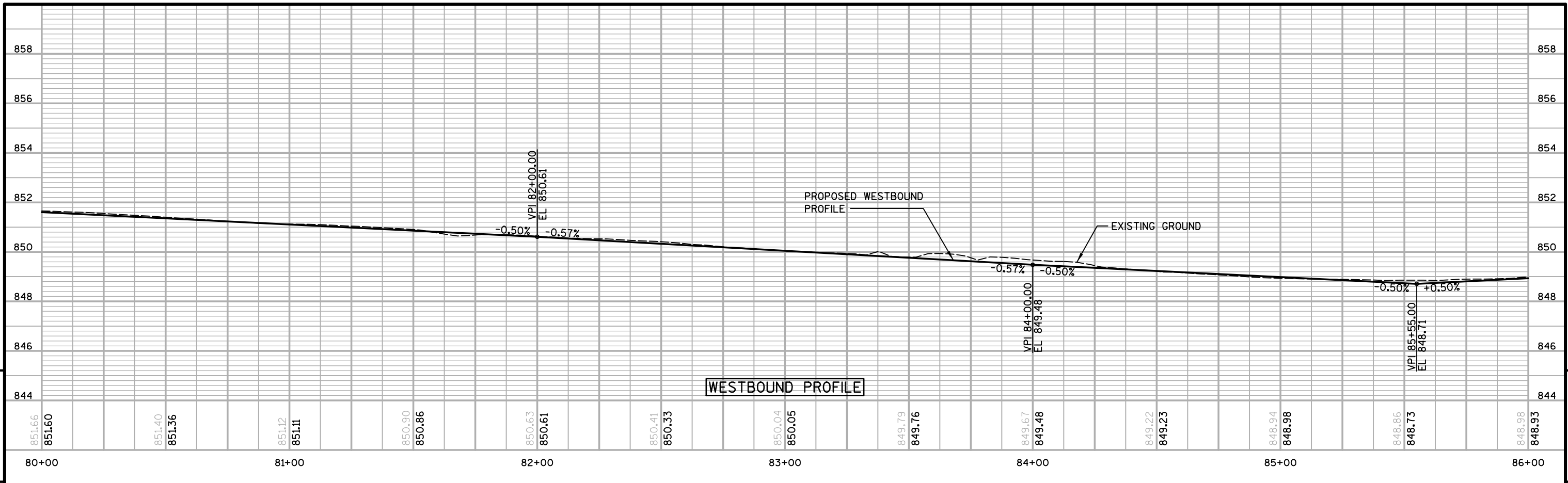
STA. 84+11 RT
CONSTRUCT P.E.

STA. 85+93 RT
CONSTRUCT P.E.

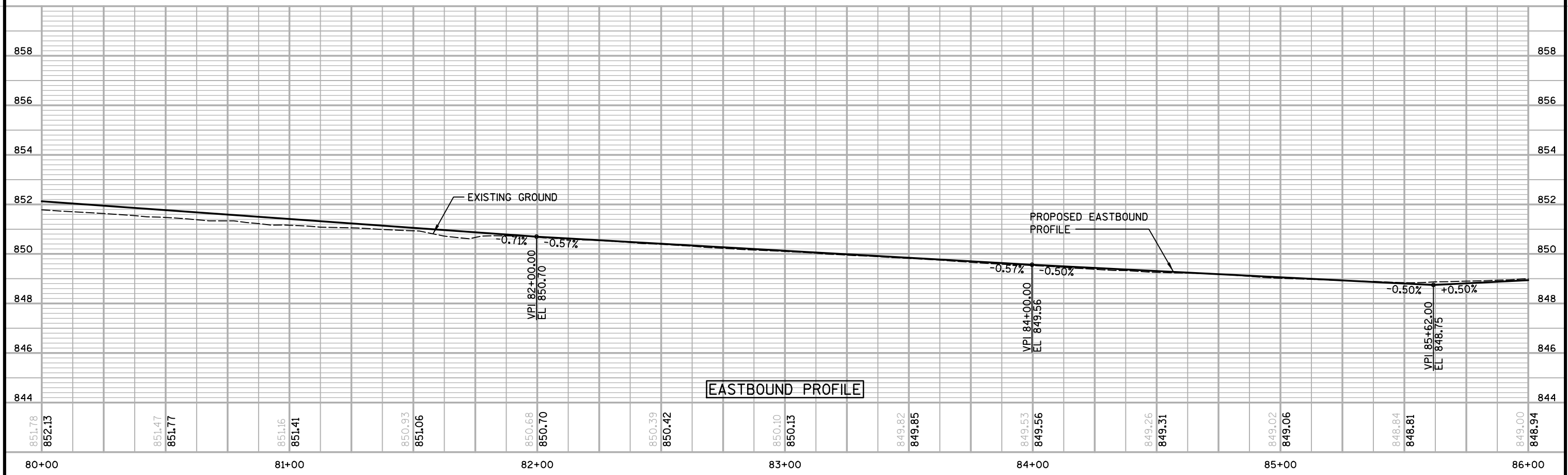
BENCH MARKS

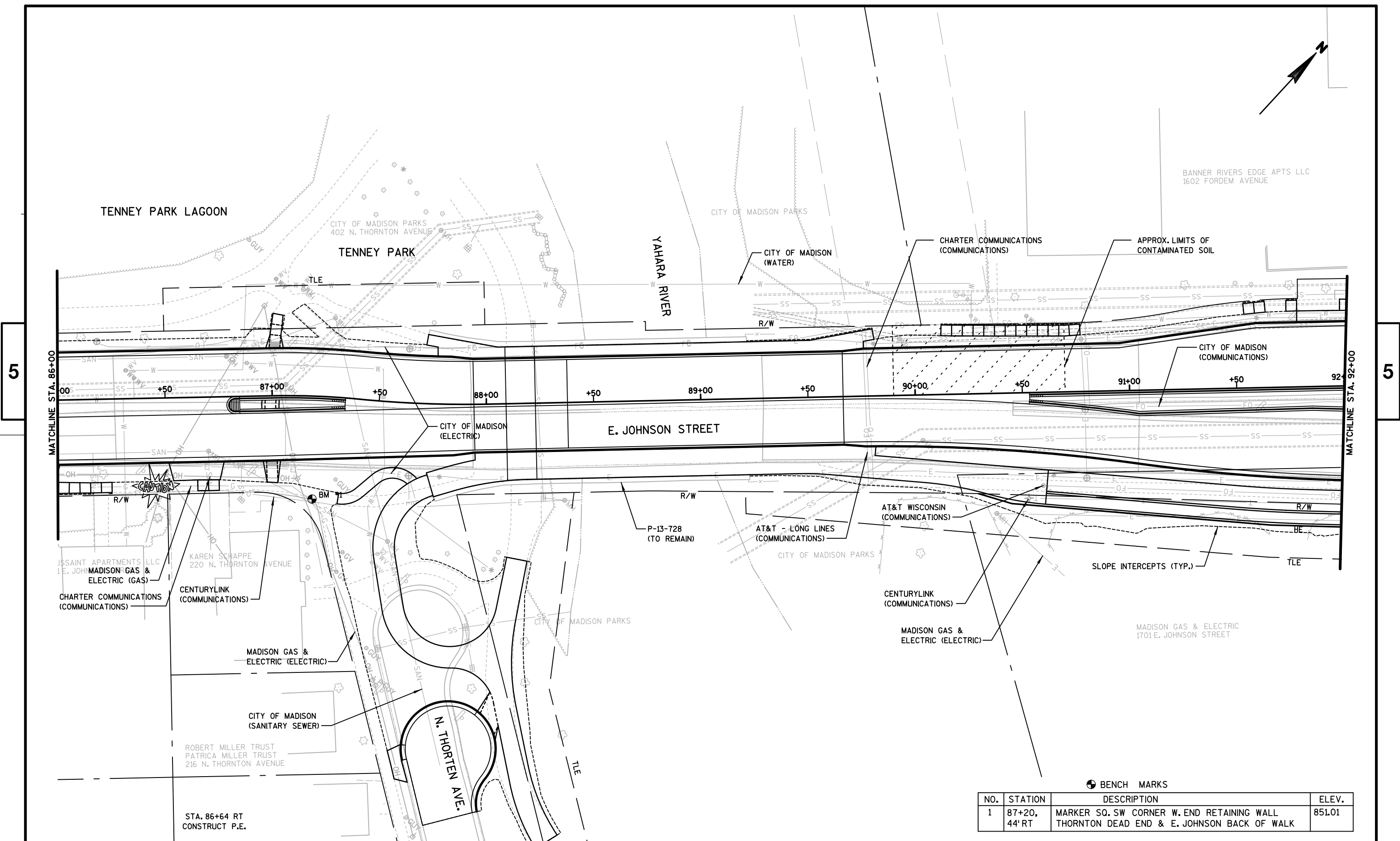
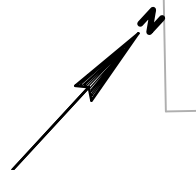
NO.	STATION	DESCRIPTION	ELEV.
3	81+91, 37' RT	TOP NUT OF EXISTING HYDRANT DICKENSON & E. JOHNSON, E QUAD	853.54

5



5

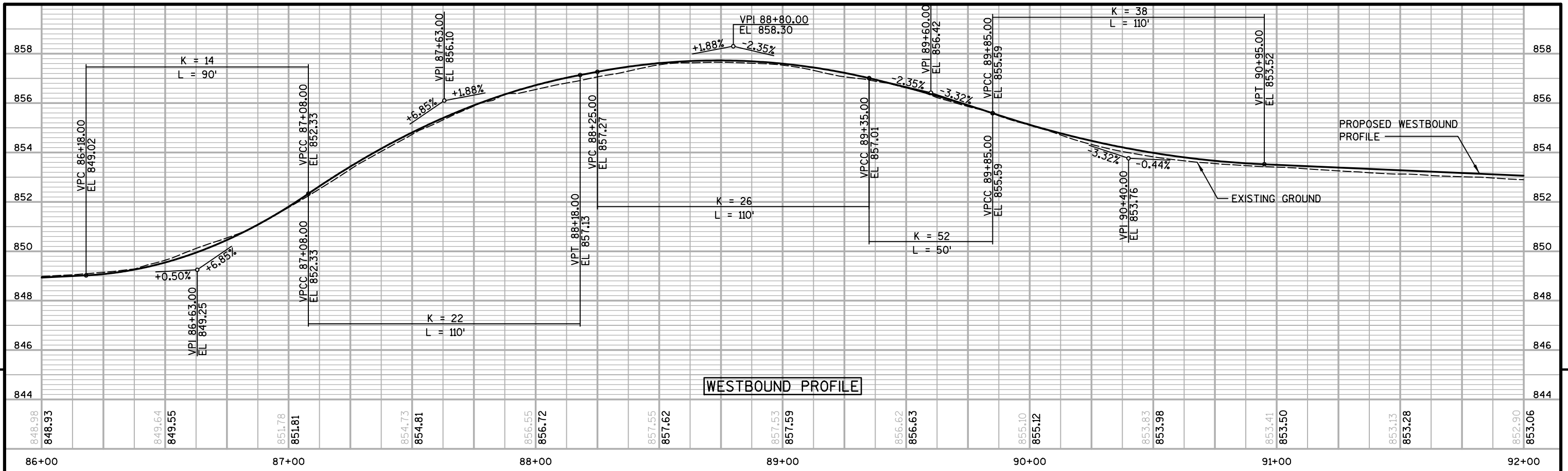




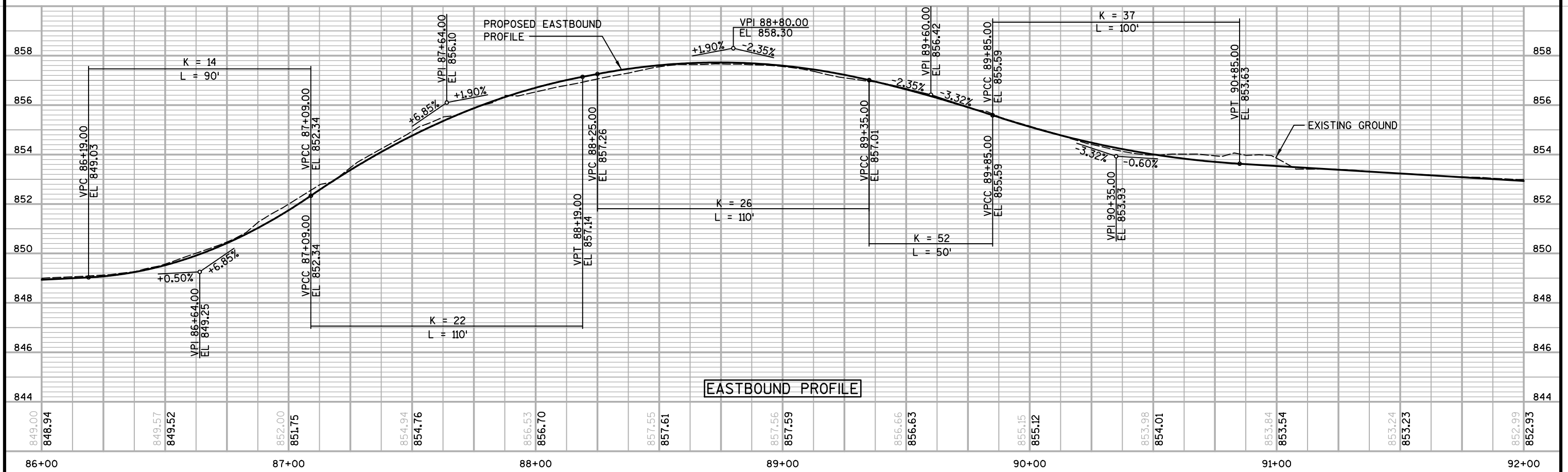
● BENCH MARKS

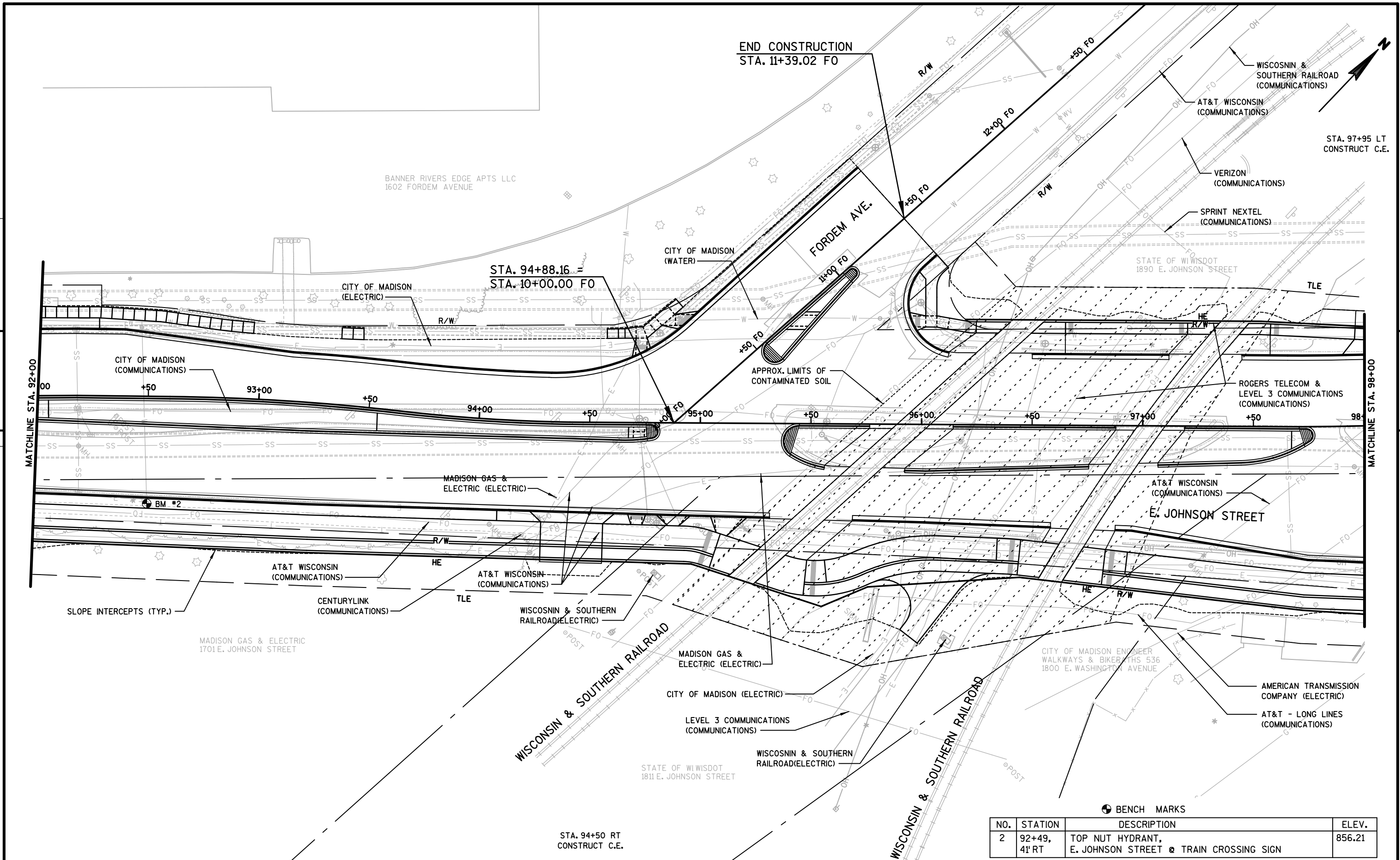
NO.	STATION	DESCRIPTION	ELEV.
1	87+20, 44' RT	MARKER SQ. SW CORNER W. END RETAINING WALL THORNTON DEAD END & E. JOHNSON BACK OF WALK	851.01

5



5





END CONSTRUCTION
STA. 11+39.02 FO

STA. 94+88.16 =
STA. 10+00.00 FO

STA. 97+95 LT
CONSTRUCT C.E.

BANNER RIVERS EDGE APTS LLC
1602 FORDEM AVENUE

CITY OF MADISON
(WATER)

STATE OF WISDOT
1890 E. JOHNSON STREET

CITY OF MADISON
(COMMUNICATIONS)

APPROX. LIMITS OF
CONTAMINATED SOIL

ROGERS TELECOM &
LEVEL 3 COMMUNICATIONS
(COMMUNICATIONS)

MADISON GAS &
ELECTRIC (ELECTRIC)

AT&T WISCONSIN
(COMMUNICATIONS)

E. JOHNSON STREET

AT&T WISCONSIN
(COMMUNICATIONS)

AT&T WISCONSIN
(COMMUNICATIONS)

WISCONSIN & SOUTHERN
RAILROAD(ELECTRIC)

SLOPE INTERCEPTS (TYP.)

CENTURYLINK
(COMMUNICATIONS)

TLE

MADISON GAS & ELECTRIC
1701 E. JOHNSON STREET

MADISON GAS &
ELECTRIC (ELECTRIC)

CITY OF MADISON ENGINEER
WALKWAYS & BIKERS PATHS 536
1800 E. WASHINGTON AVENUE

AMERICAN TRANSMISSION
COMPANY (ELECTRIC)

CITY OF MADISON (ELECTRIC)

LEVEL 3 COMMUNICATIONS
(COMMUNICATIONS)

AT&T - LONG LINES
(COMMUNICATIONS)

STATE OF WISDOT
1811 E. JOHNSON STREET

WISCONSIN & SOUTHERN
RAILROAD(ELECTRIC)

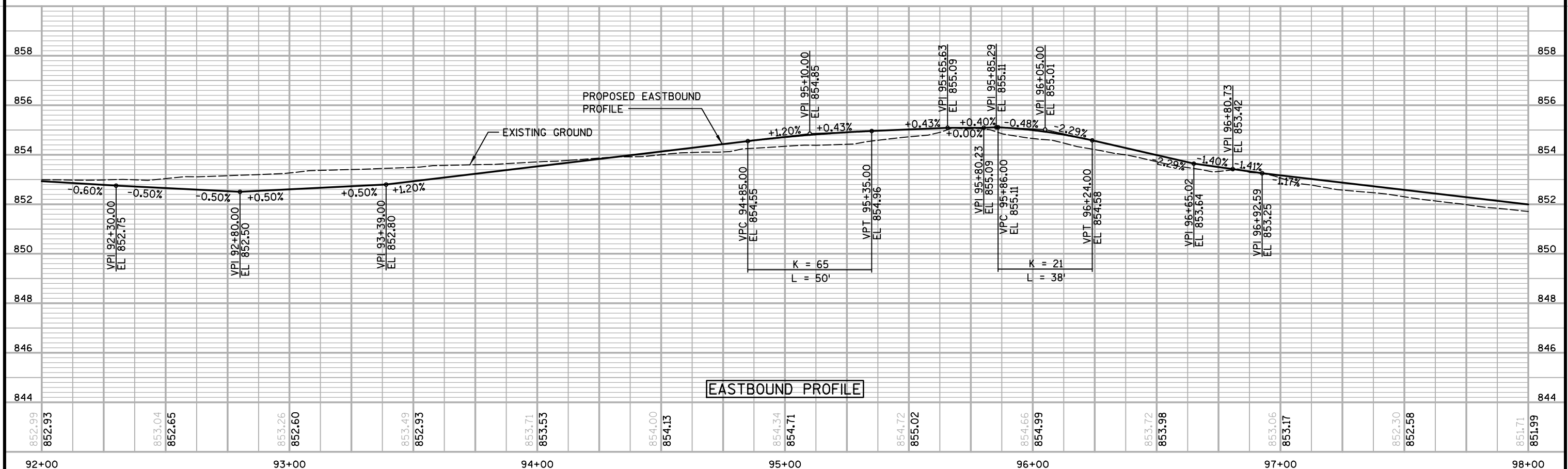
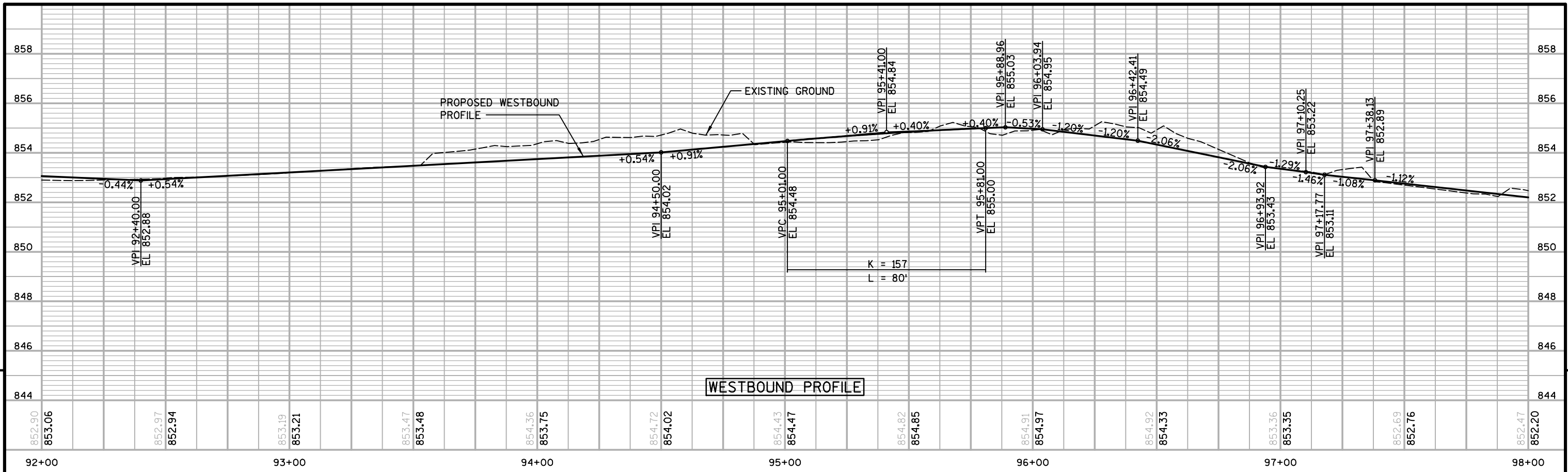
STA. 94+50 RT
CONSTRUCT C.E.

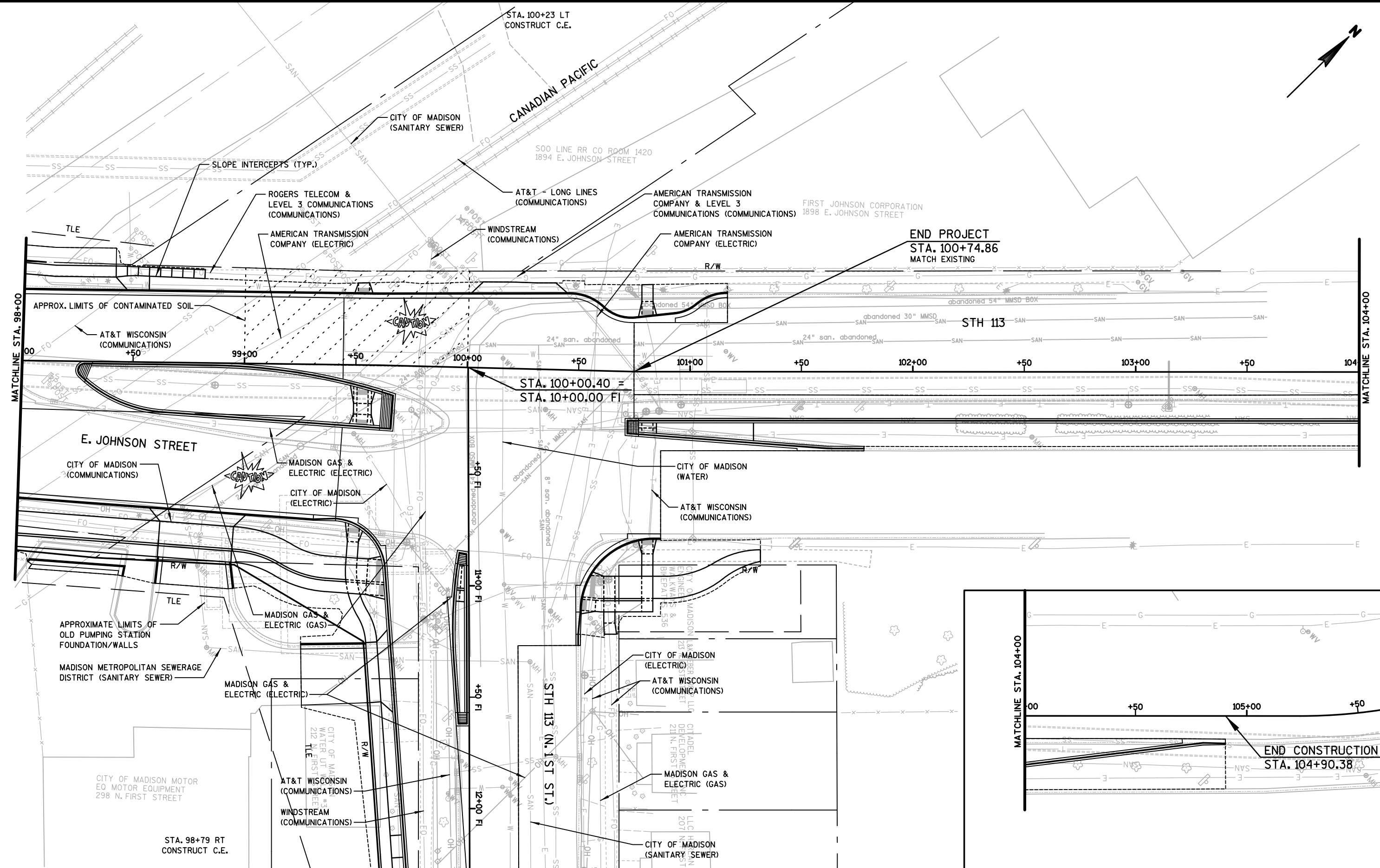
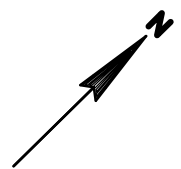
BENCH MARKS

NO.	STATION	DESCRIPTION	ELEV.
2	92+49, 41' RT	TOP NUT HYDRANT, E. JOHNSON STREET @ TRAIN CROSSING SIGN	856.21

5

5

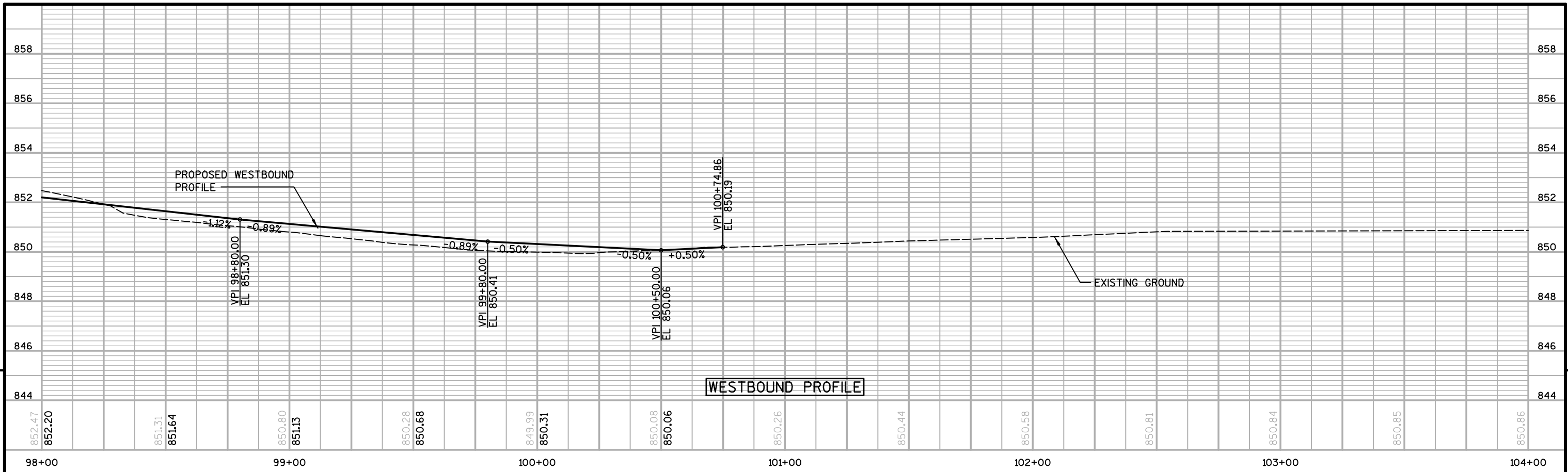




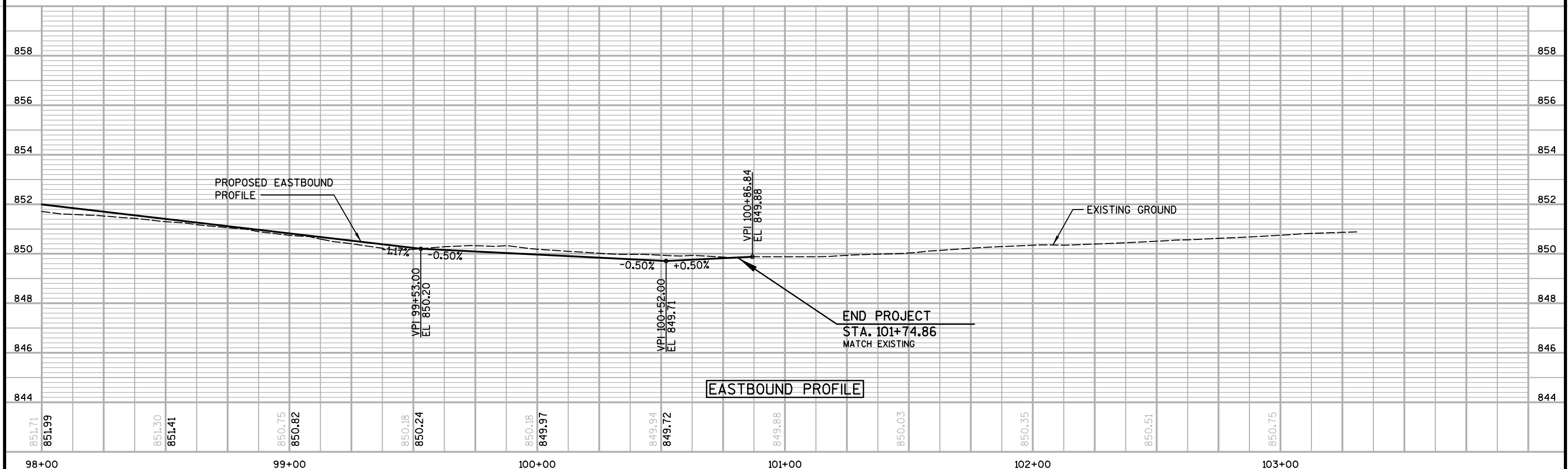
5

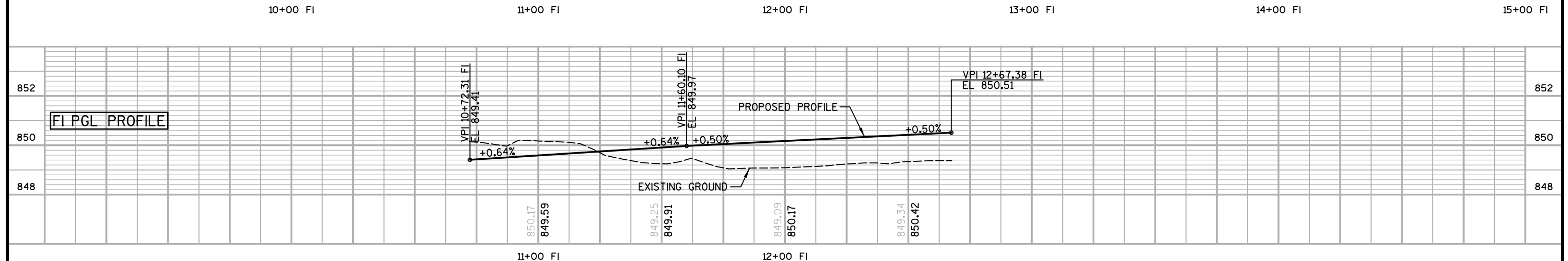
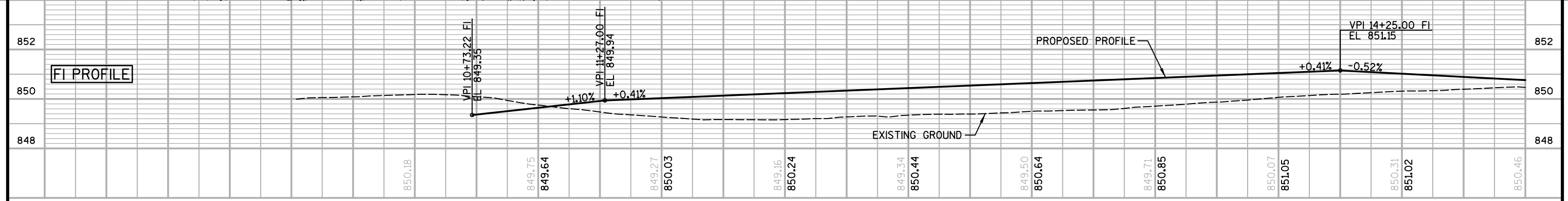
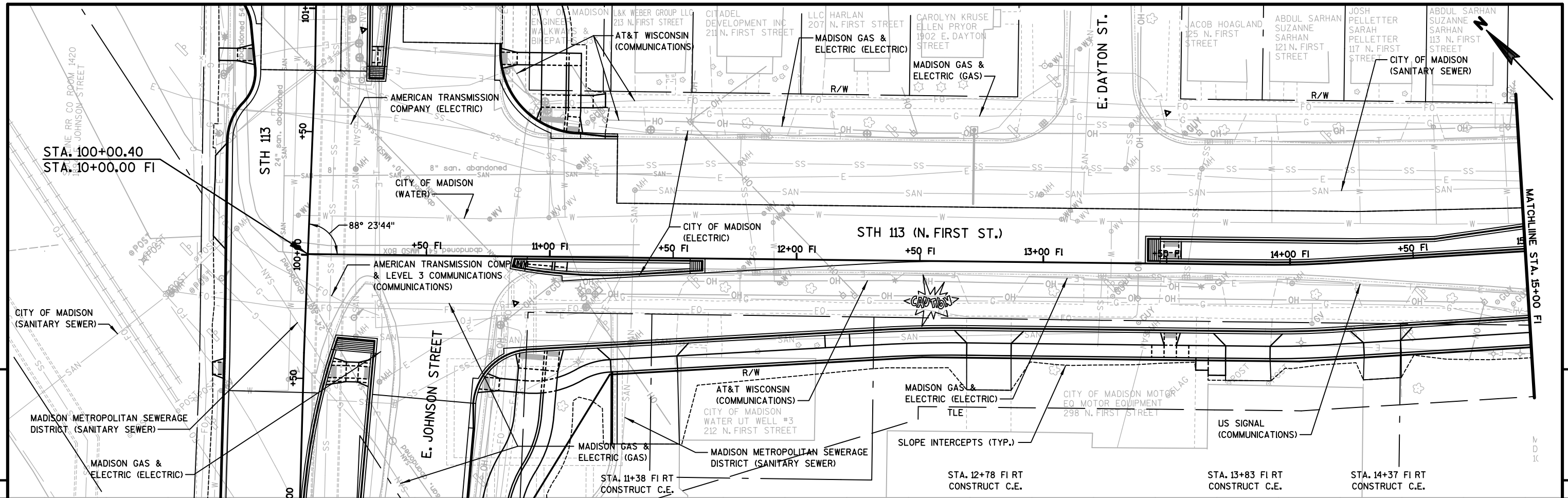
5

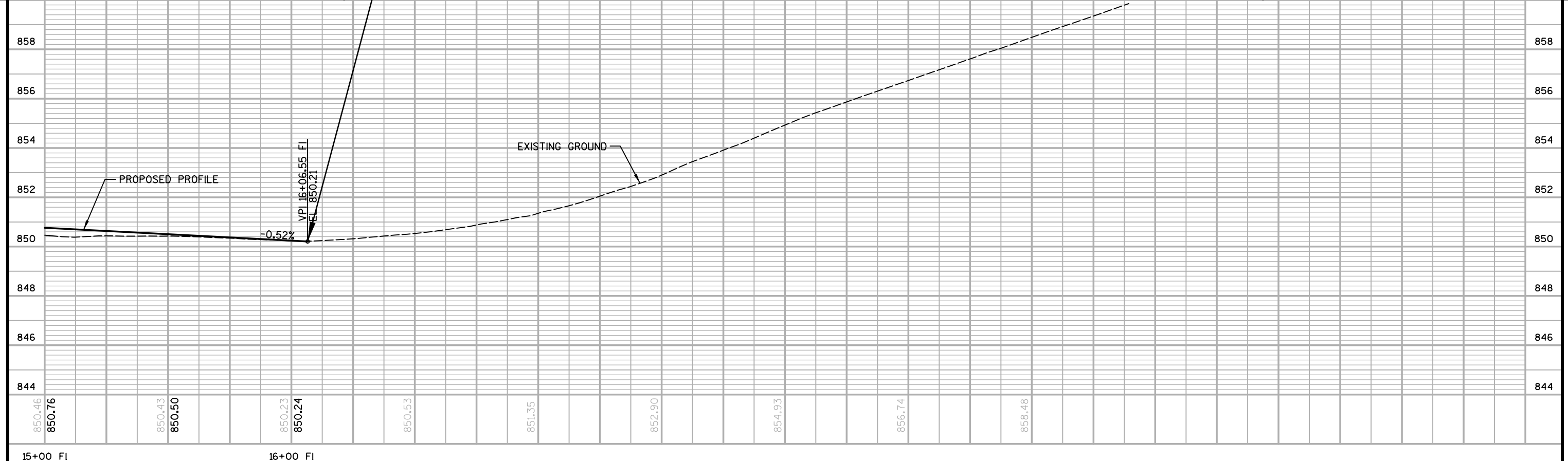
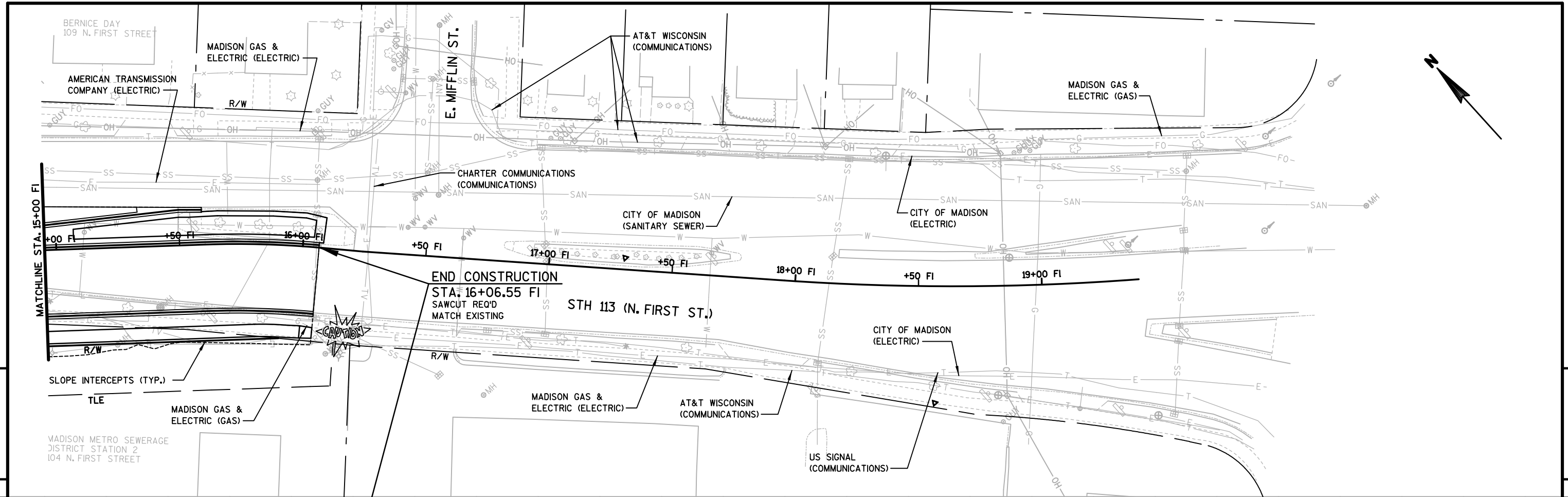
5



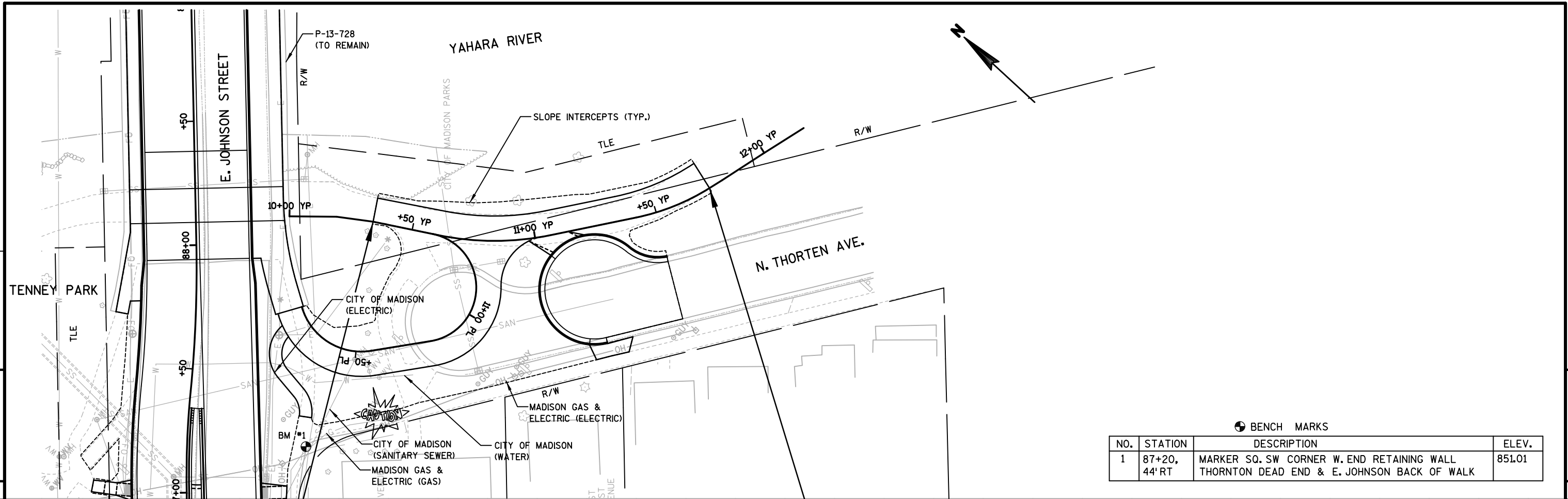
5





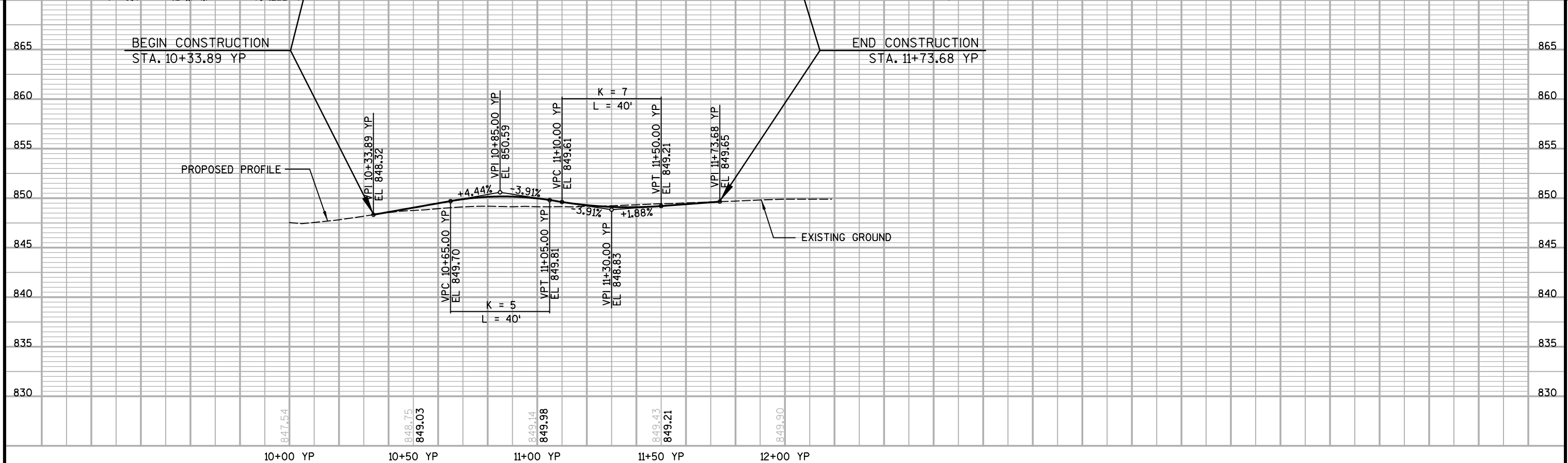


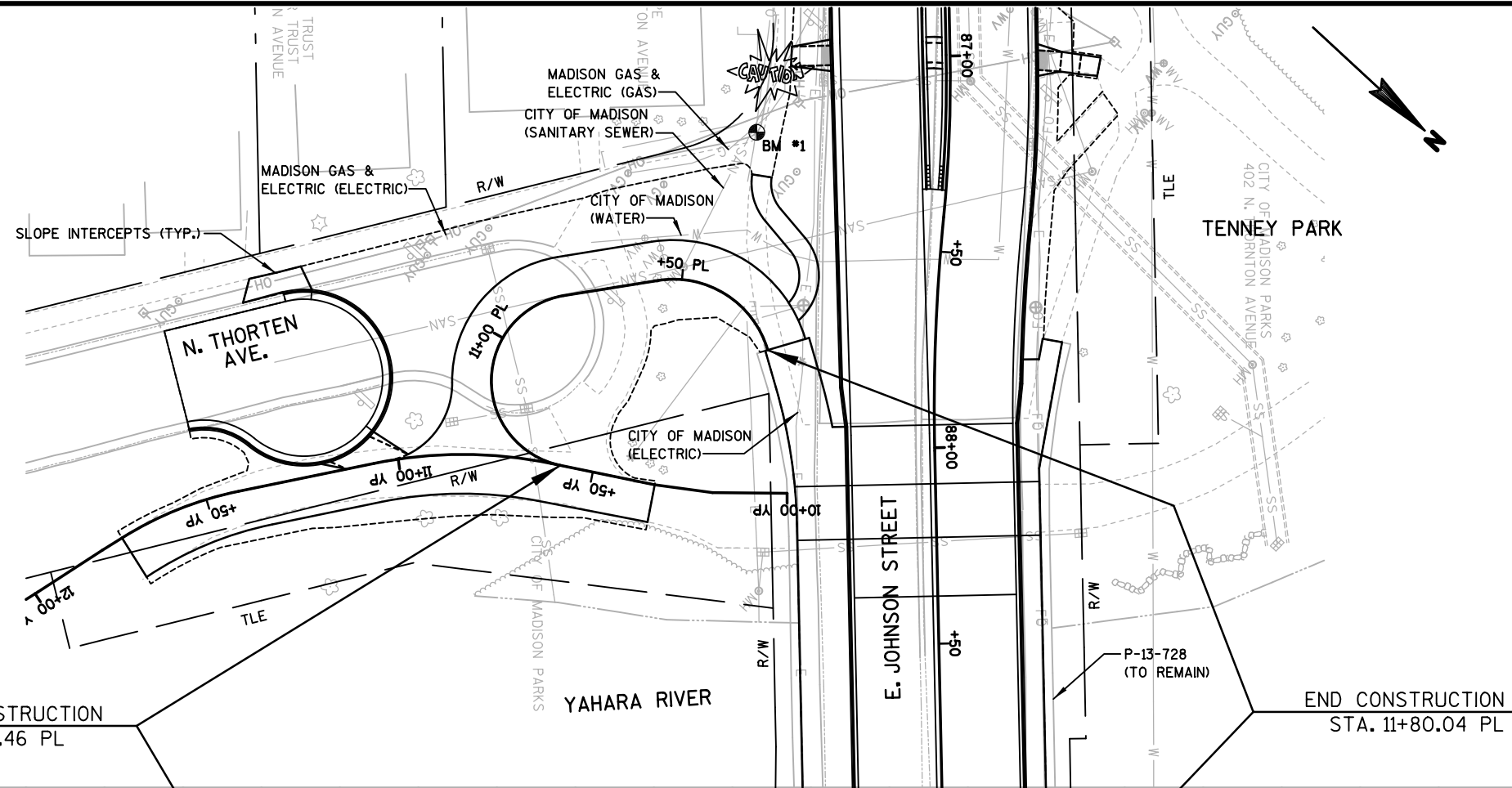
PROJECT NO: 5992-09-14 | HWY: E. JOHNSON STREET | COUNTY: DANE | PLAN AND PROFILE - N. FIRST STREET | SHEET 295 | E



BENCH MARKS

NO.	STATION	DESCRIPTION	ELEV.
1	87+20, 44' RT	MARKER SQ. SW CORNER W. END RETAINING WALL THORNTON DEAD END & E. JOHNSON BACK OF WALK	851.01





BEGIN CONSTRUCTION
STA. 10+58.46 PL

END CONSTRUCTION
STA. 11+80.04 PL

BENCH MARKS

NO.	STATION	DESCRIPTION	ELEV.
1	87+20, 44' RT	MARKER SQ. SW CORNER W. END RETAINING WALL THORNTON DEAD END & E. JOHNSON BACK OF WALK	851.01

