



Revisions: \_\_\_\_\_  
Date: \_\_\_\_\_  
Description: \_\_\_\_\_  
717 John Nolen Drive, Madison, WI 53713  
Ph: 608-255-0800 Fax: 608-255-7750

A Residential Development by Krapp Construction Madison, Wisconsin  
**Kennedy Point Condominiums**  
GDP-SIP SUBMITTAL

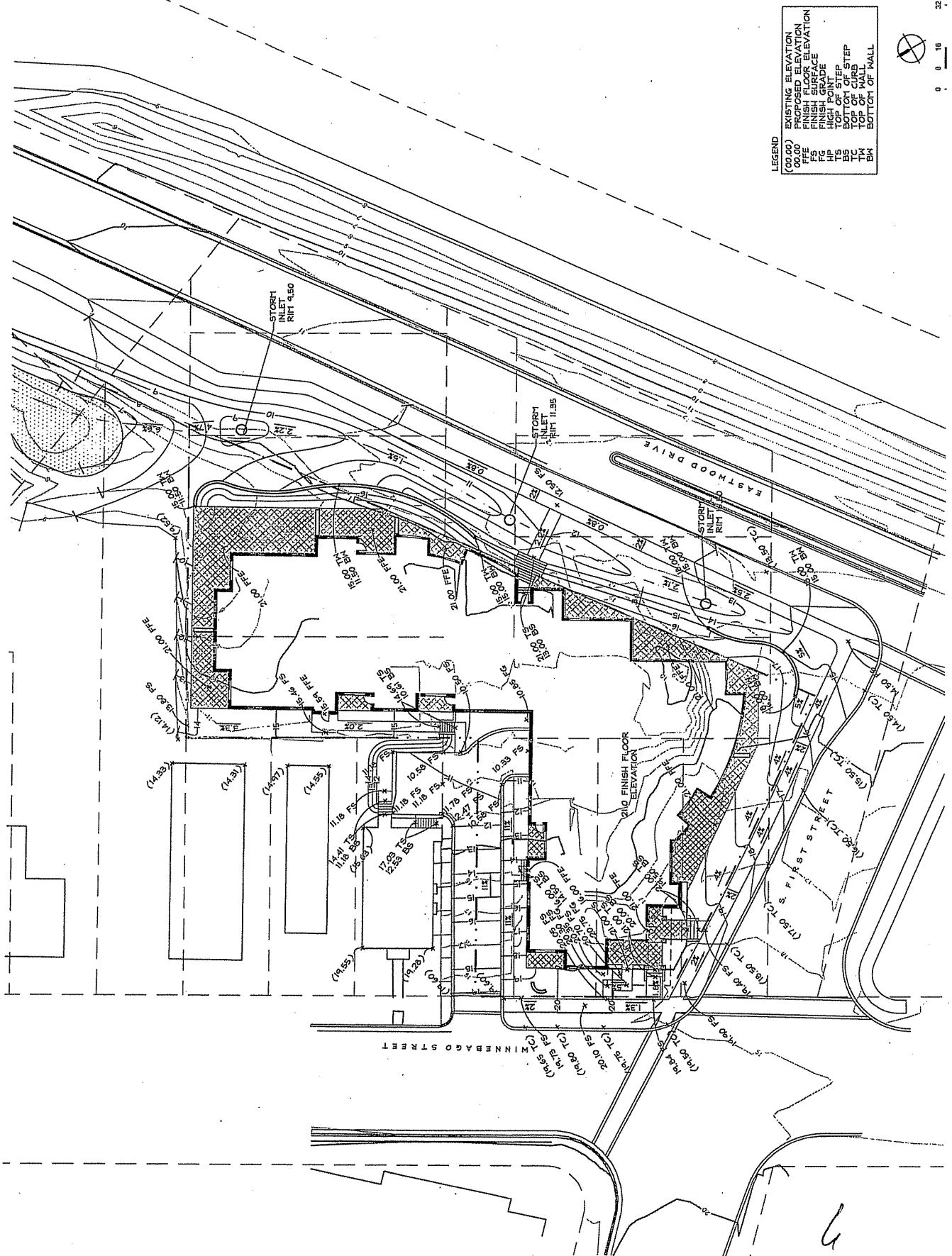
Schreiber/Anderson Associates, Inc.

Sheet Title:  
Grading  
Plan

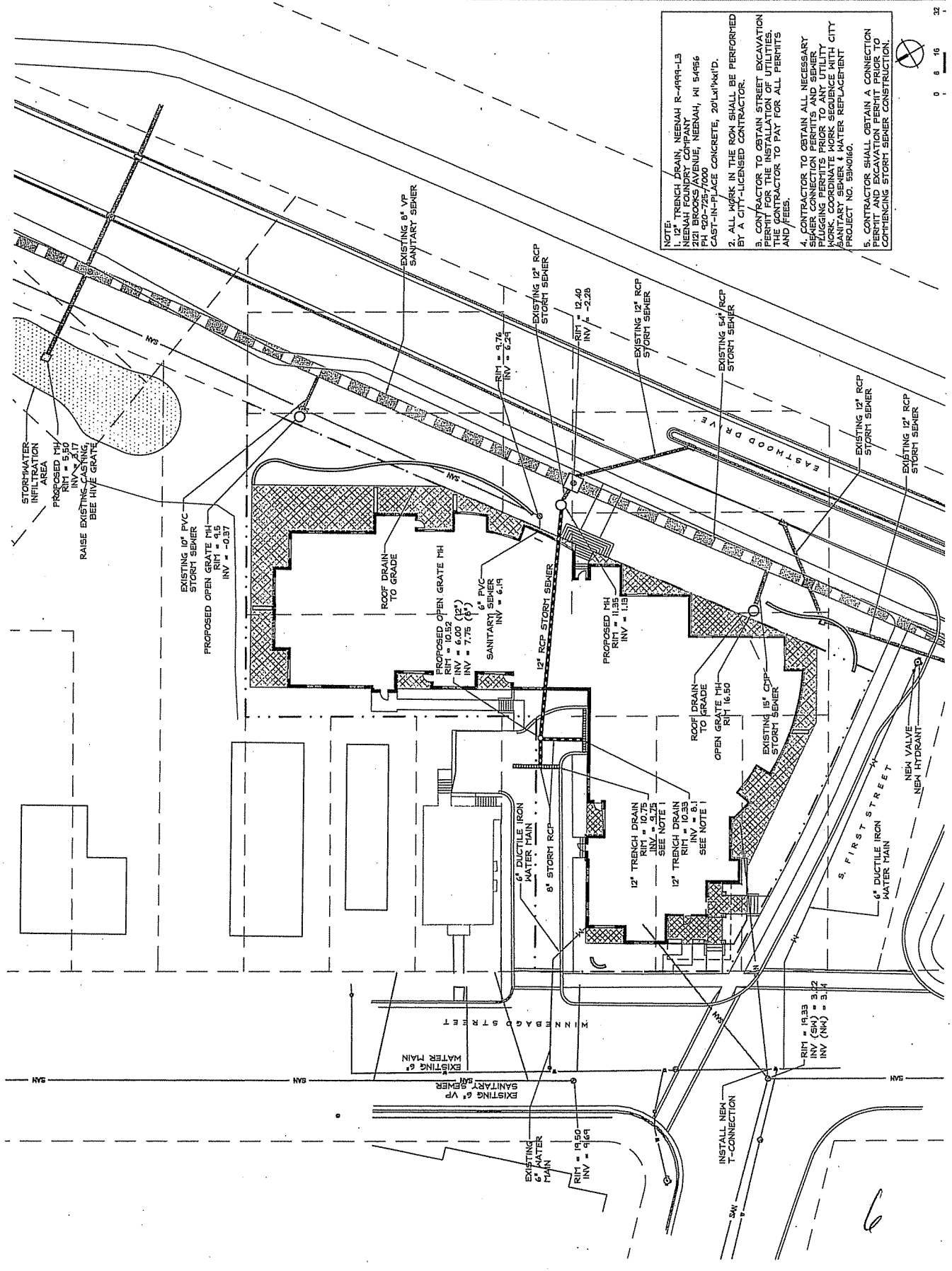
Date:  
5 October 2005

Sheet Number:

C5

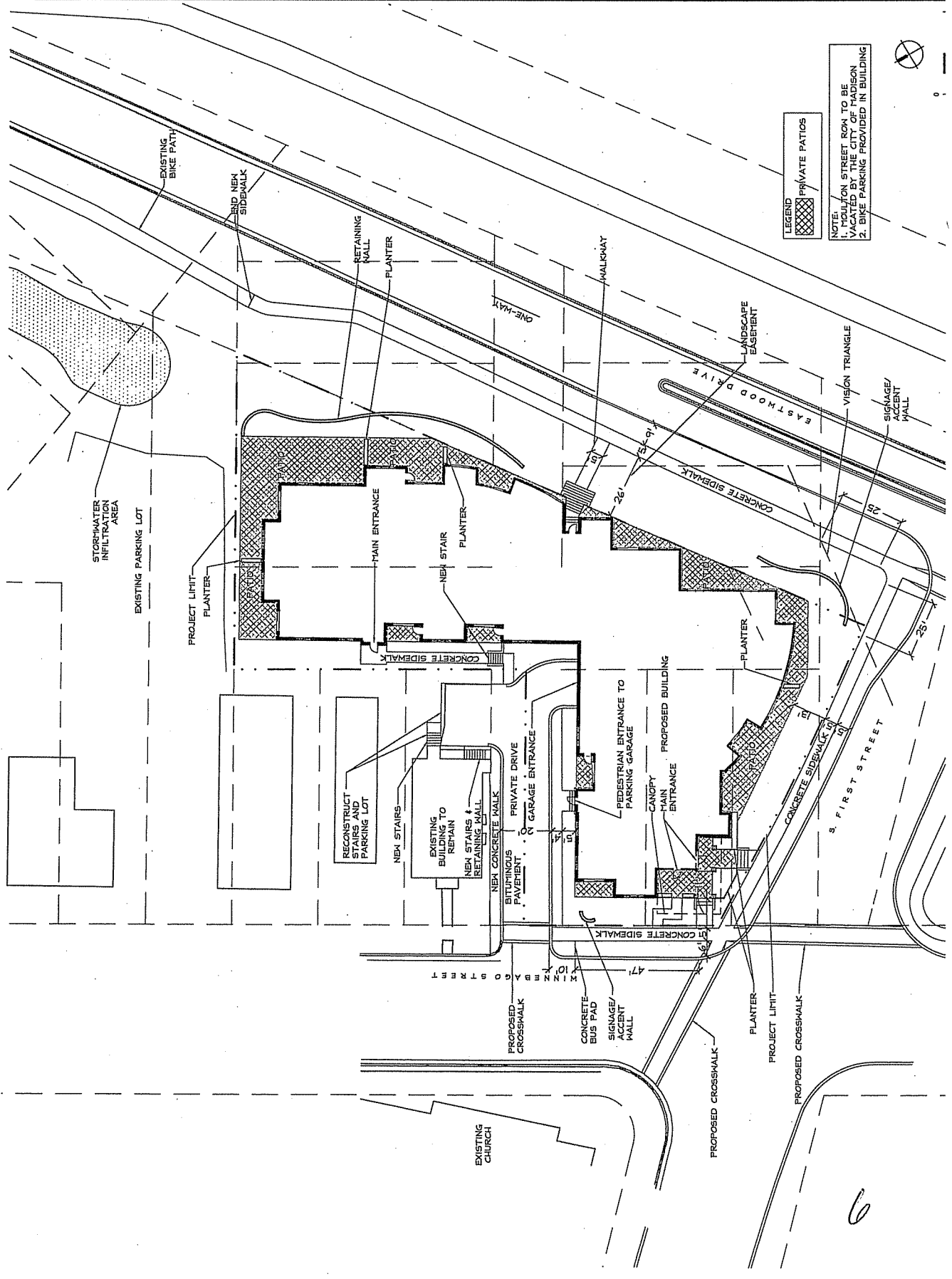


6



NOTE:  
 1. 12\"/>





**LEGEND**

- PRIVATE PATIOS

**NOTE:**

1. HOLLON STREET ROW TO BE MAINTAINED BY THE CITY OF MADISON.
2. BIKE PARKING PROVIDED IN BUILDING.



6



717 John Nolen Drive, Madison, WI 53713  
 Ph: 608-255-0800 Fax: 608-255-7750

Schreiber/Anderson Associates, Inc.

GDP-SIP SUBMITTAL  
 Kennedy Point Condominiums  
 Madison, Wisconsin  
 A Residential Development by Knapp Construction Madison, Wisconsin

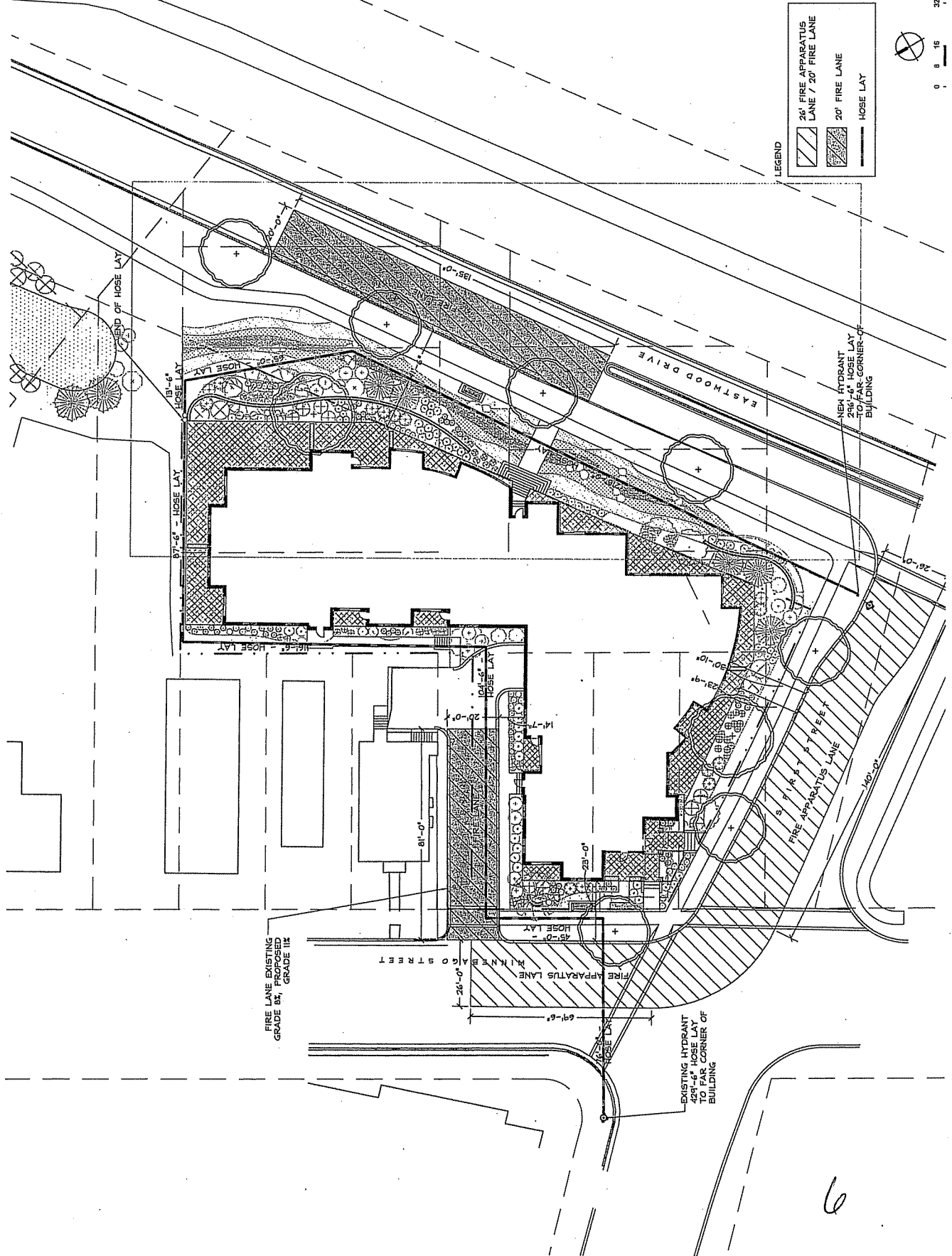
Revisions:  
 Date: \_\_\_\_\_  
 Description: \_\_\_\_\_

Sheet Title:  
 Fire  
 Protection  
 Plan

Date:  
 5 October 2005

Sheet Number:

C9



LEGEND

	26' FIRE APPARATUS LANE / 20' FIRE LANE
	20' FIRE LANE
	HOSE LAY



0 8 16 32'

6



717 John Nolen Drive, Madison, WI 53713  
 Ph: 608-255-0800 Fax: 608-255-7750

Schreiber/Anderson Associates, Inc.

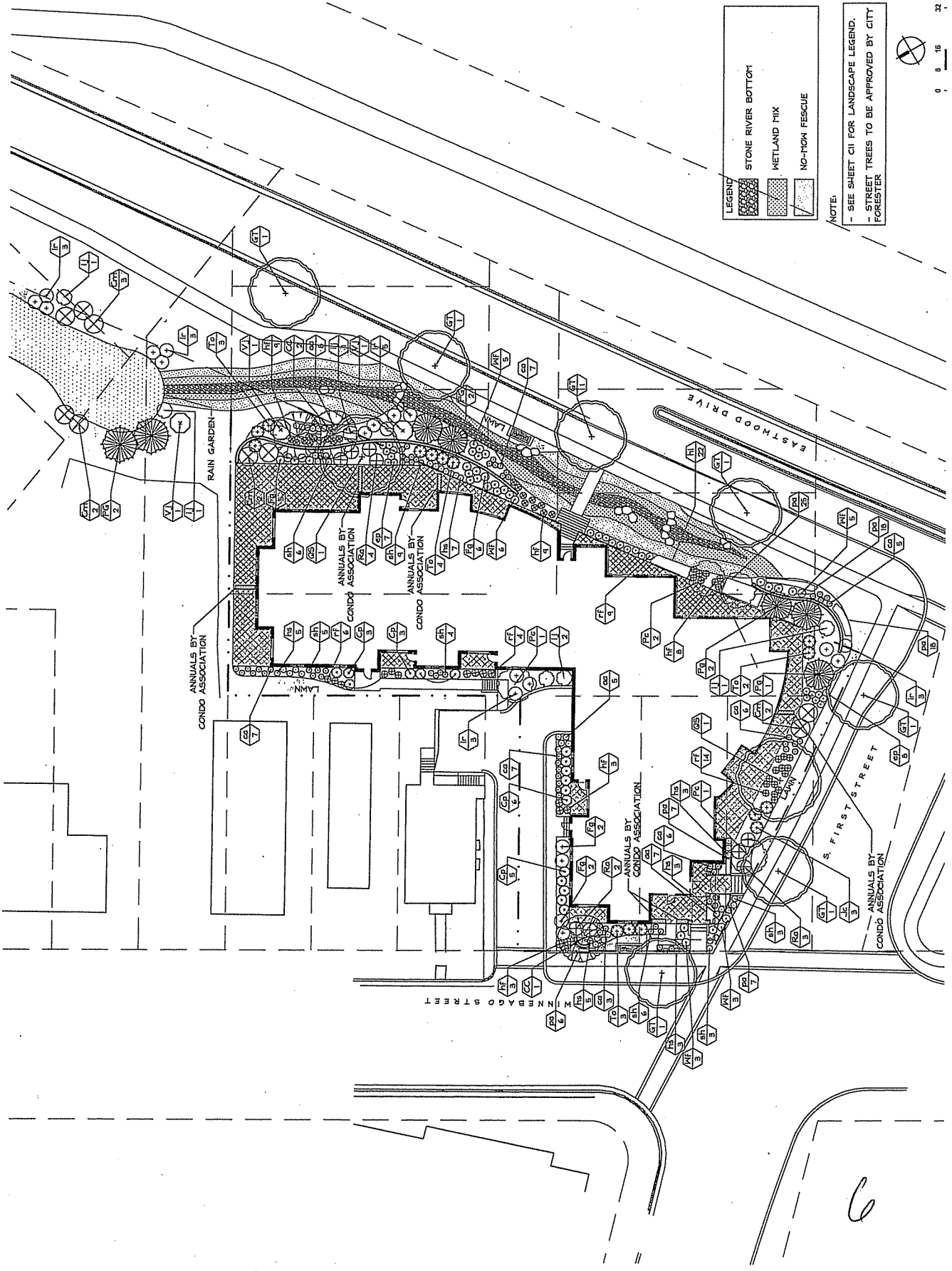
GDP-SIP SUBMITTAL  
 Kennedy Point Condominiums  
 Madison, Wisconsin  
 A Residential Development by Krupp Construction Madison, Wisconsin

Sheet Title:  
 Landscape  
 Plan

Date:  
 5 October 2005

Sheet Number:  
 C10

Revisions:  
 Date Description



LEGEND

[Pattern]	STONE RIVER BOTTOM
[Pattern]	WETLAND MIX
[Pattern]	NO-NOM FESCUE

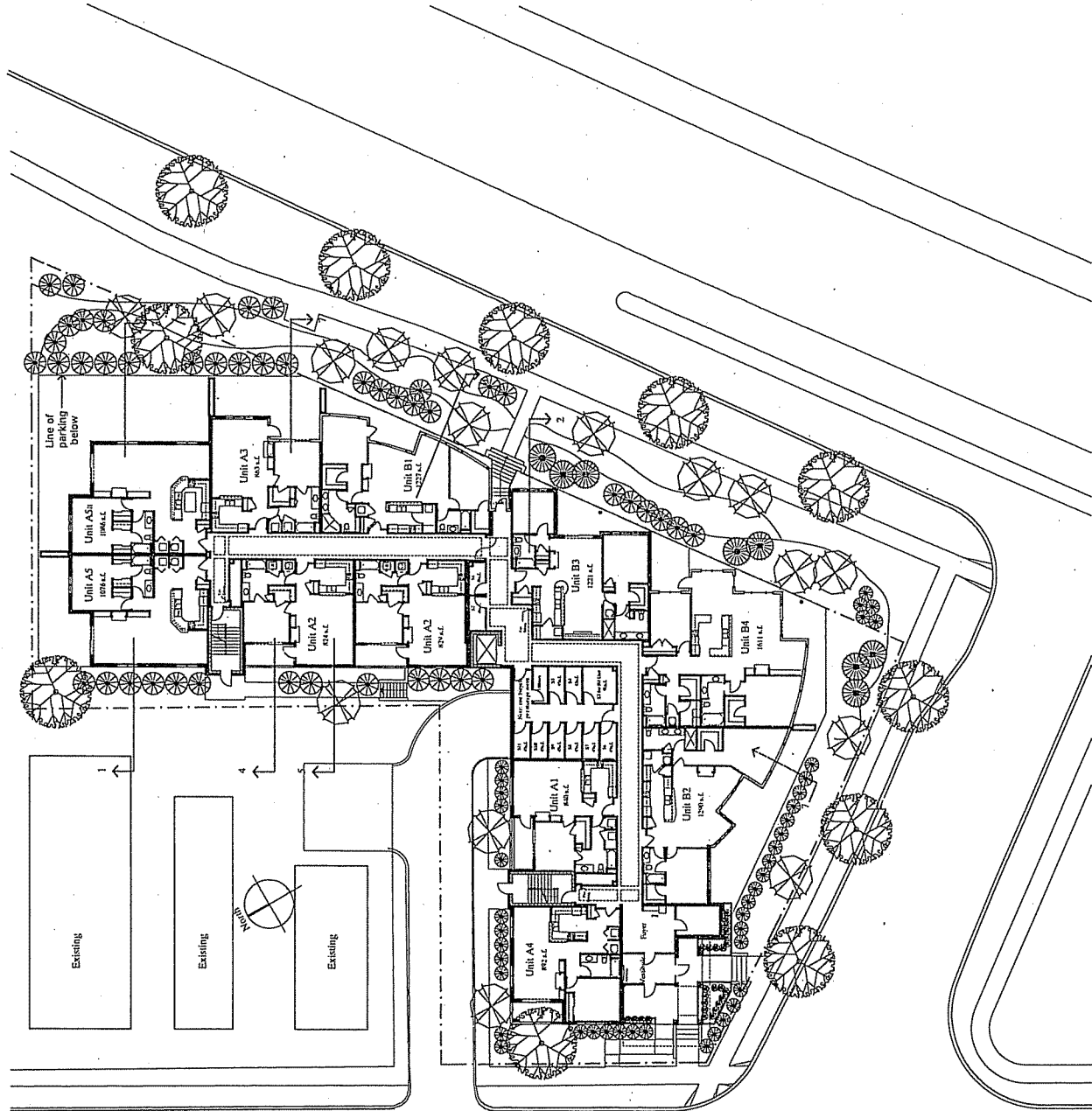
NOTE:  
 - SEE SHEET C11 FOR LANDSCAPE LEGEND.  
 - STREET TREES TO BE APPROVED BY CITY FORESTER



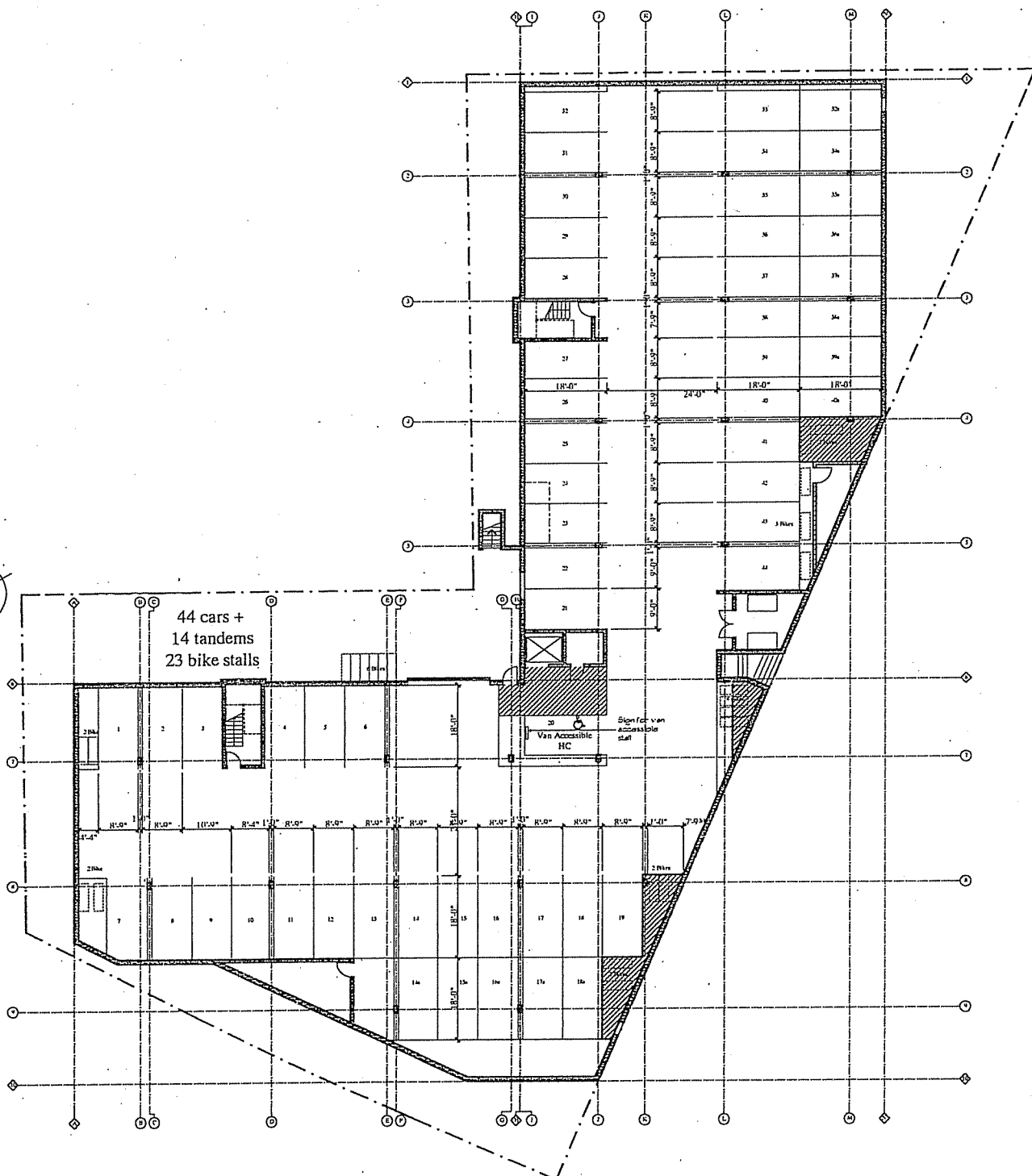
C

1190 West Druid Hills Dr., NE, Suite T-65, Atlanta, GA 30329  
Telephone: 404-634-4466  
Facsimile: 404-634-4433

Simonson Germany Nonemaker + Associates, Inc.  
Planning Architecture Landscape Architecture




5

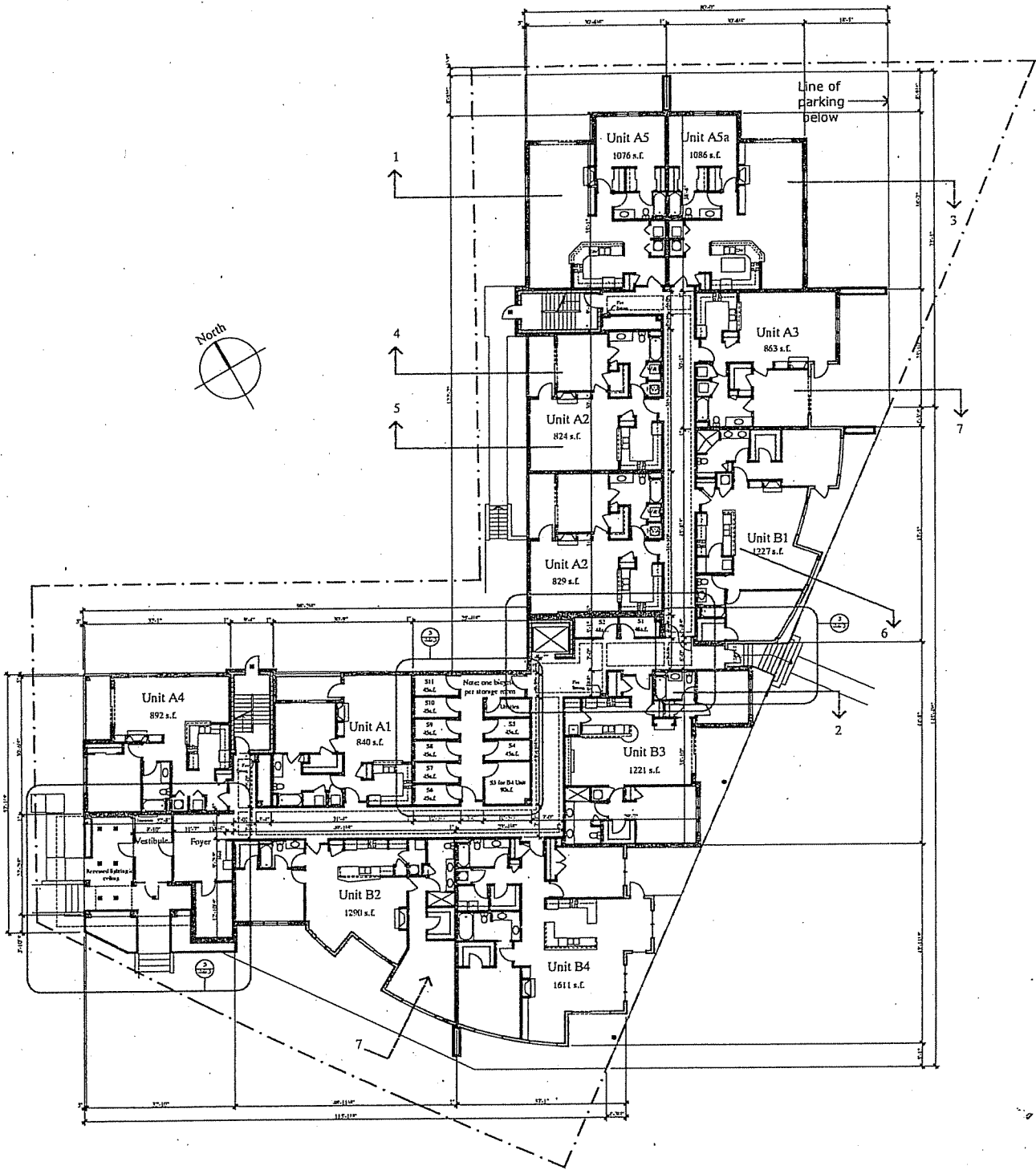


44 cars +  
14 tandems  
23 bike stalls

Sign for van  
accessible  
stall  
Van Accessible  
HC

 Parking Level Plan  
Scale: 1/16" = 1'-0"

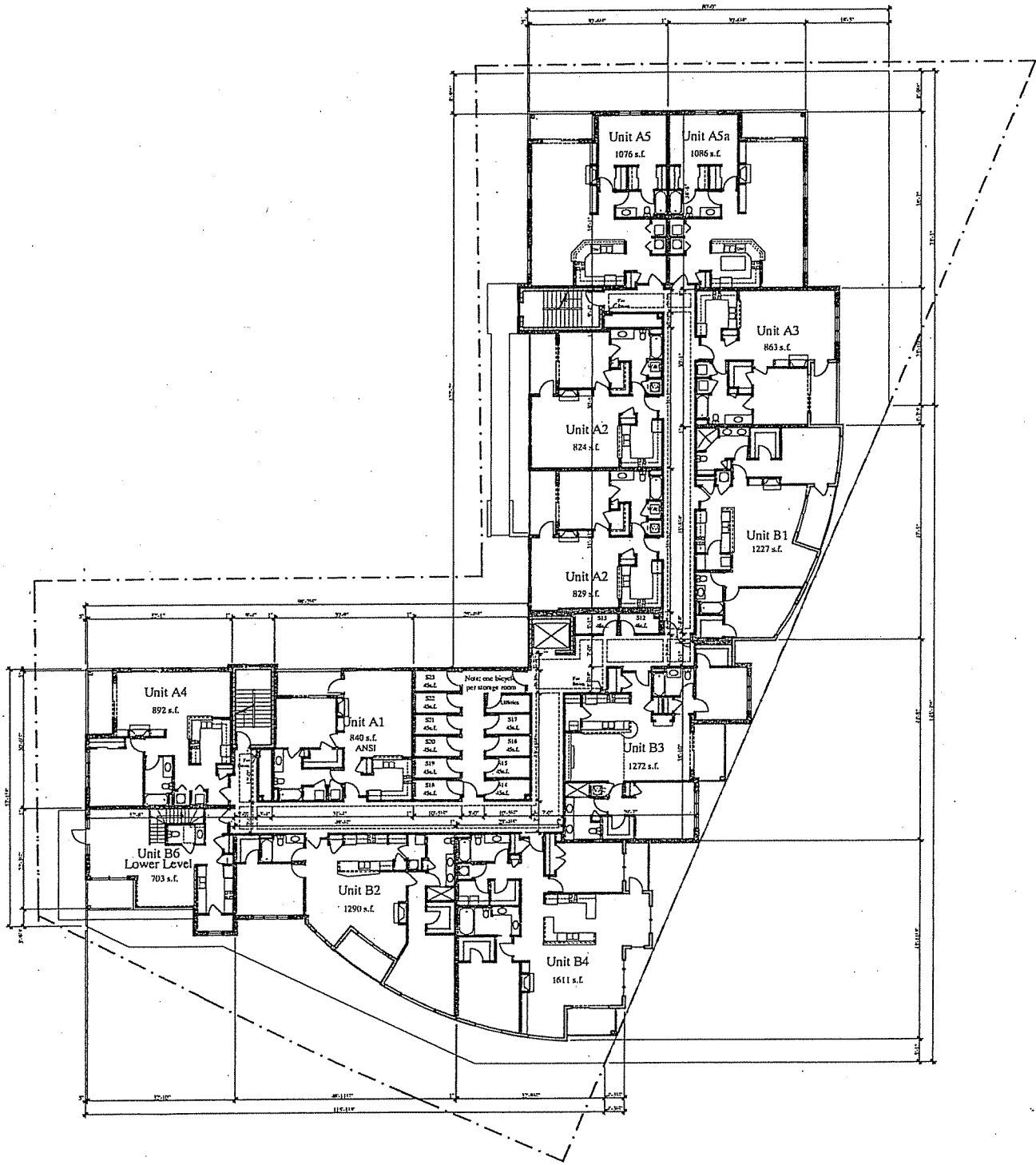
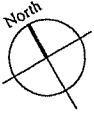
6



○ First Level Plan  
 Scale: 1/16" = 1'-0"

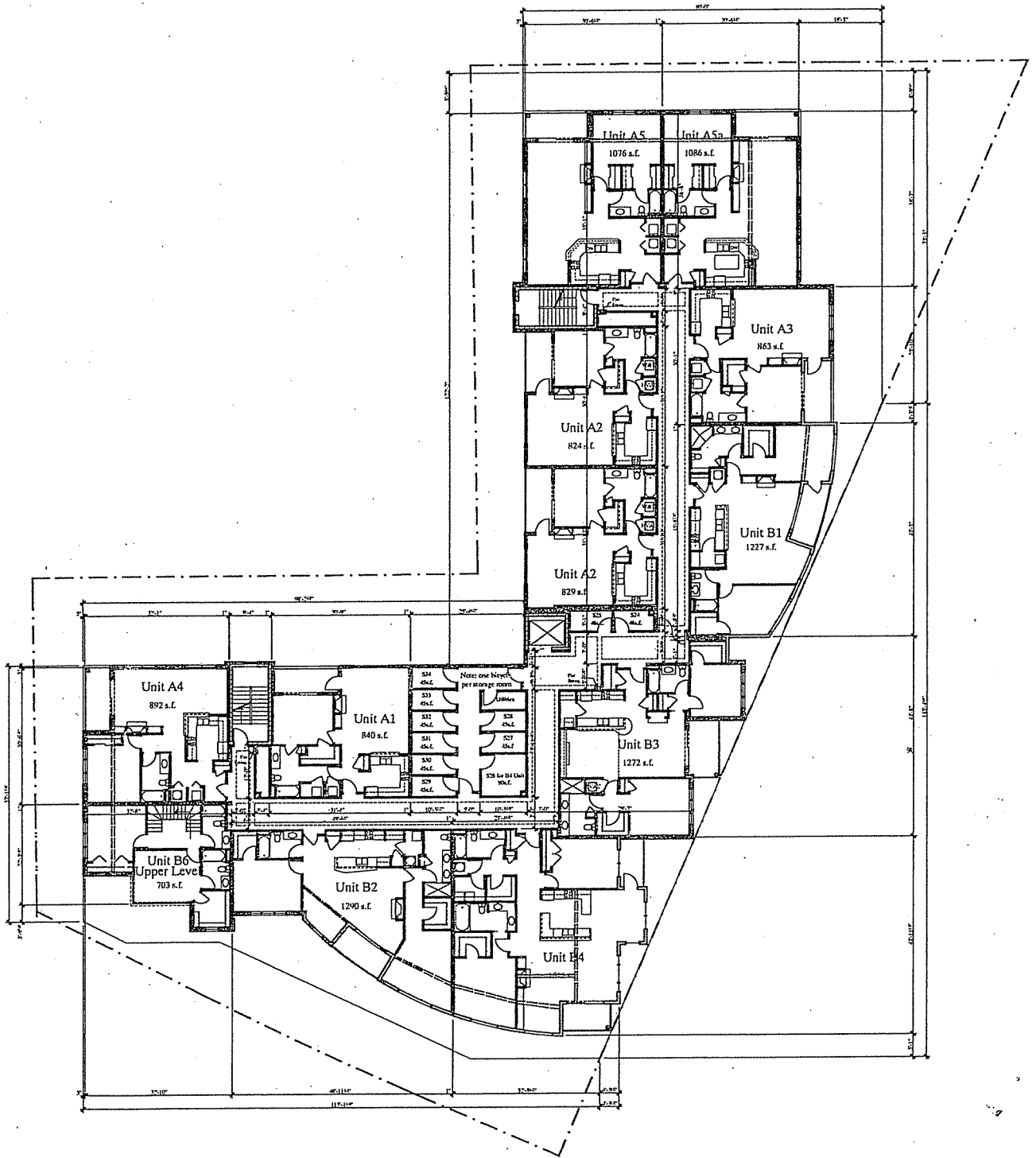
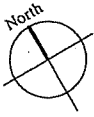
6





Second Level Plan  
Scale: 1/16" = 1'-0"

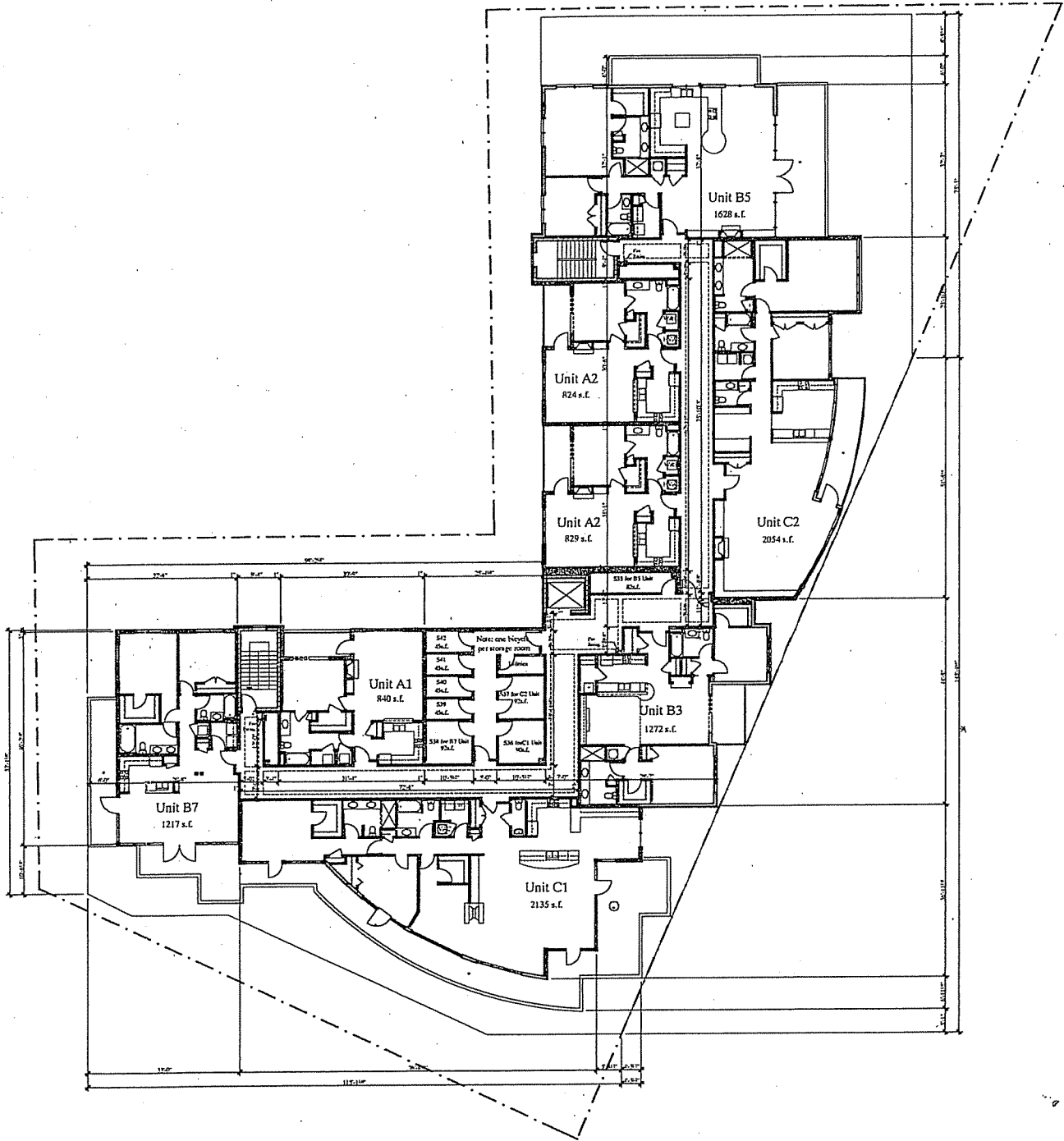
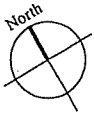
6



Third Level Plan

Scale: 1/16" = 1'-0"

6



Fourth Level Plan  
Scale: 1/16" = 1'-0"

6

SGN+A  
 Simonsen/Germany/Normakel + Associates, Inc  
 Planning Architecture Landscape Architecture  
 1190 West Druid Hills Dr, NE Suite T-65 Atlanta, GA 30329  
 Telephone: 404-634-4466 Facsimile: 404-634-4433

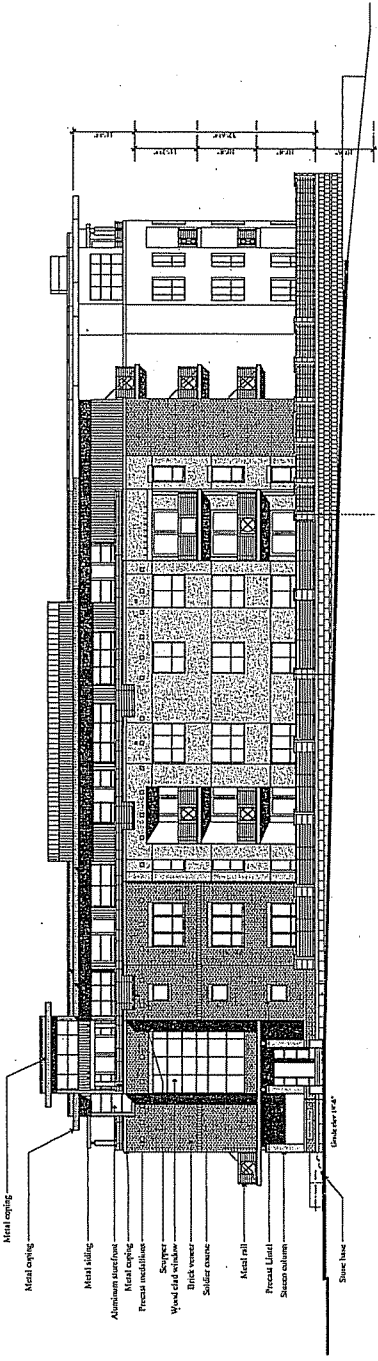
Kennedy Point Condominiums  
 Madison, Wisconsin  
 A Residential Development by Krupp Construction Madison, Wisconsin

Revisions:  
 Date: \_\_\_\_\_  
 Description: \_\_\_\_\_  
 \_\_\_\_\_  
 \_\_\_\_\_  
 \_\_\_\_\_  
 \_\_\_\_\_  
 \_\_\_\_\_  
 \_\_\_\_\_  
 \_\_\_\_\_  
 \_\_\_\_\_

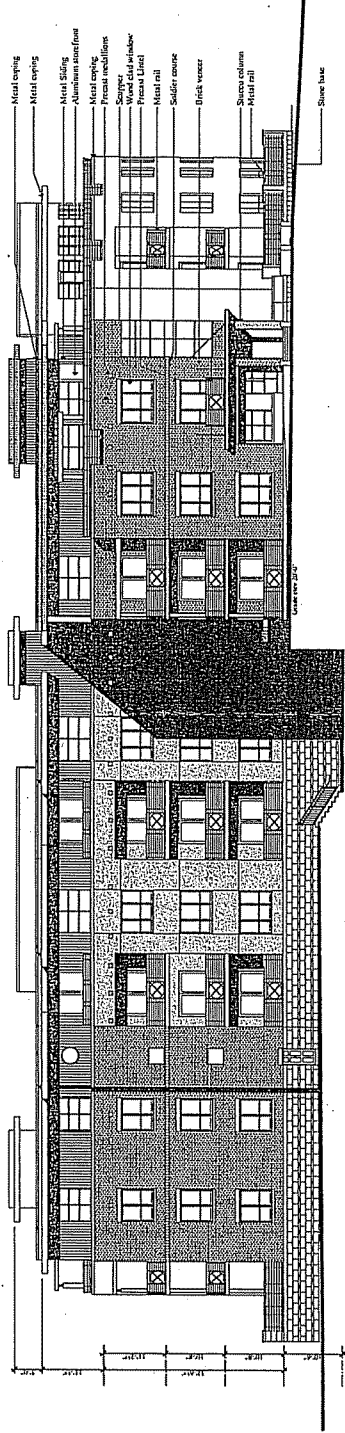
The drawings are the property of SGN+A, and shall not be reproduced, transmitted, or disseminated, in any form, without permission of SGN+A.

Sheet Title:  
 Elevations

Date: 05 October, 2005  
 Sheet Number: A7



South Elevation - First Street  
 Scale: 3/32" = 1'-0"



West Elevation- Winnebago Street  
 Scale: 3/32" = 1'-0"

GDP-SIP SUBMITTAL  
Kennedy Point Condominiums  
Madison, Wisconsin  
A Residential Development by Krupp Construction Madison, Wisconsin  
1190 West Druid Hills Dr., NE Suite 1-65 Atlanta, GA 30329  
Telephone: 404-634-4466  
Facsimile: 404-634-4433

Simonson Germany Nonemaker + Associates, Inc.  
Planning Architecture Landscape Architecture  
The drawings are prepared by Simonson Germany Nonemaker + Associates, Inc. and shall remain the property of SGN+A and shall not be reproduced, stored in a retrieval system, or used for any purpose without permission of SGN+A.

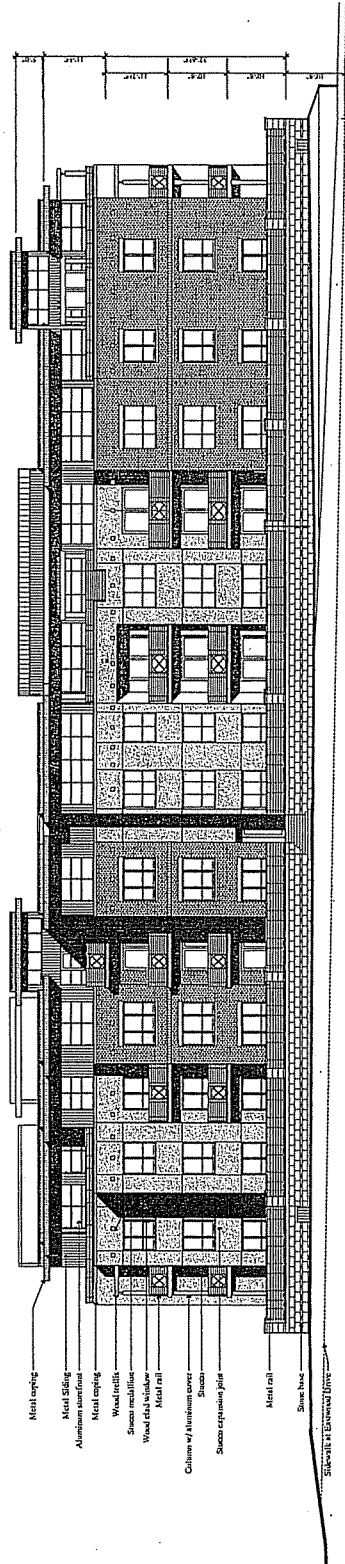
SGN+A  
Sheet Number:  
Date: 05 October 2005

Revisions:

Date	Description

Sheet Title:  
Elevations

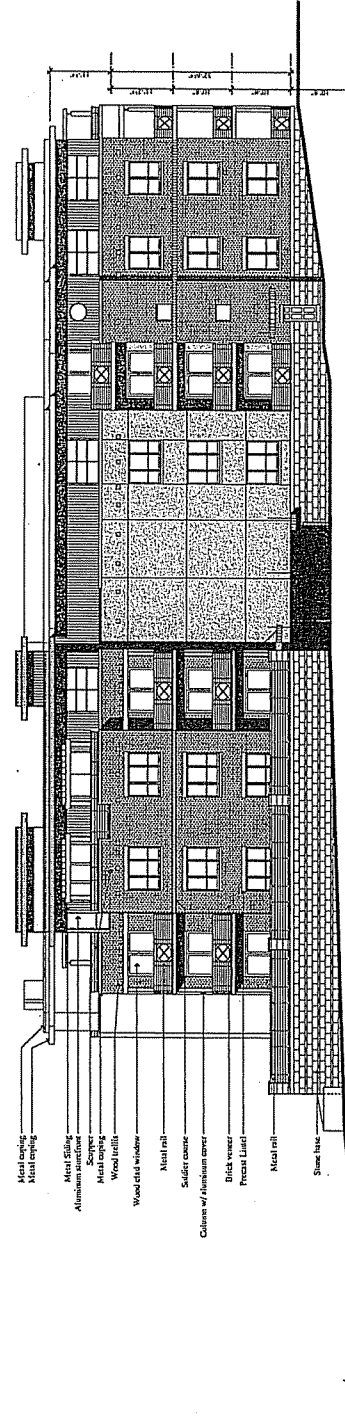
A8



- Metal coping
- Metal coping
- Metal coping
- Aluminum storefront
- Wood lintel
- Swiss metal case
- Wood deck window
- Metal rail
- Column w/ aluminum cover
- Stone
- Swiss expanding joint
- Metal rail
- Stone base

Sideview at Eastwood Drive

East Elevation - Eastwood Drive  
Scale: 3/32" = 1'-0"



- Metal coping
- Metal coping
- Metal coping
- Aluminum storefront
- Wood lintel
- Wood deck window
- Metal rail
- Column w/ aluminum cover
- Brick veneer
- Prestass Lintel
- Metal rail
- Stone base

North Elevation  
Scale: 3/32" = 1'-0"

6