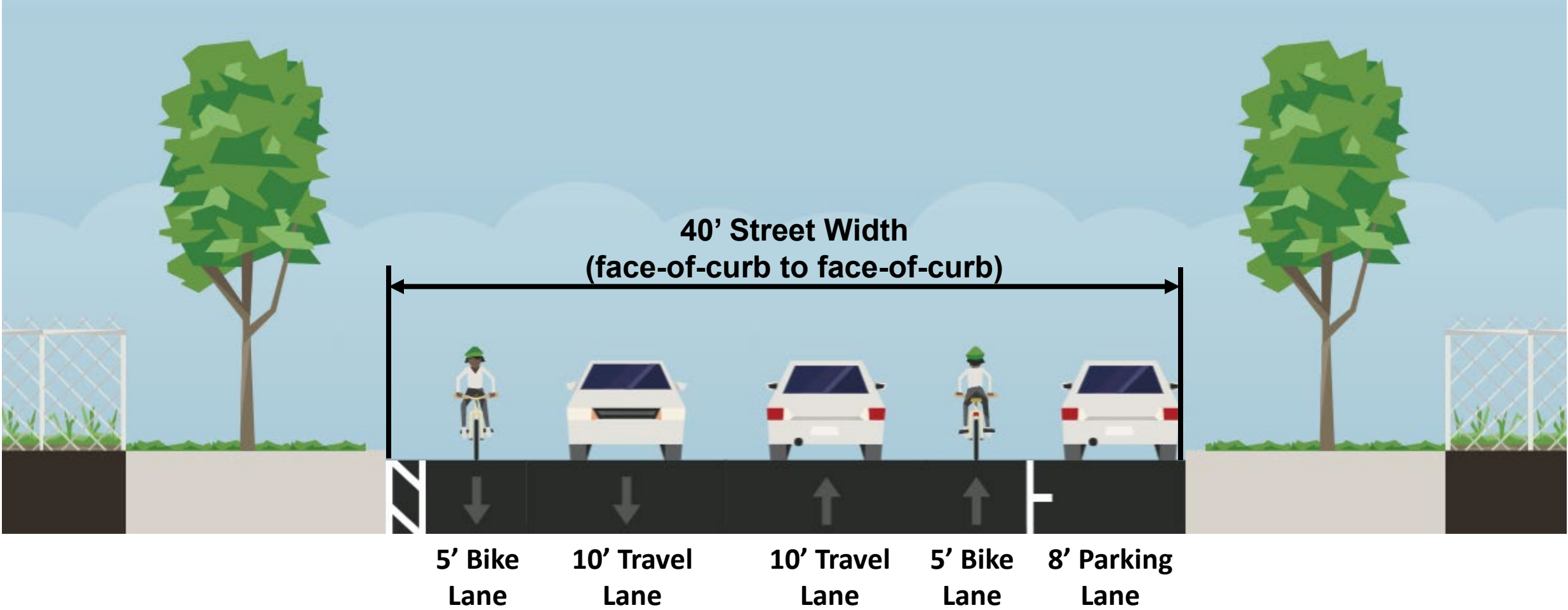


# Project Location



# Moorland Rd – Existing Typical Section



# Moorland Rd – Existing Conditions

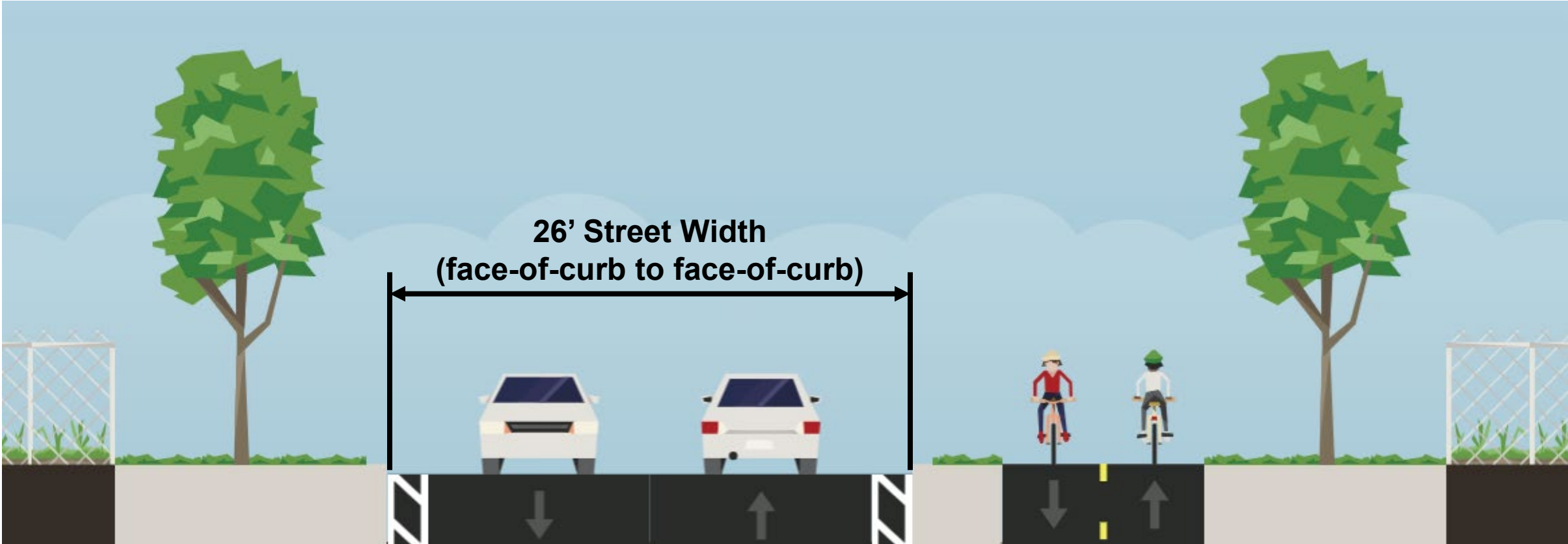


**Existing Moorland Rd, Looking West (No Parking Section)**  
- Trees + Utility Poles directly behind south-side curb

**Existing Moorland Rd, Looking East (Parking on south-side)**



# Moorland Rd Path – Proposed Typical Section



26' Street Width  
(face-of-curb to face-of-curb)

11' Travel Lane

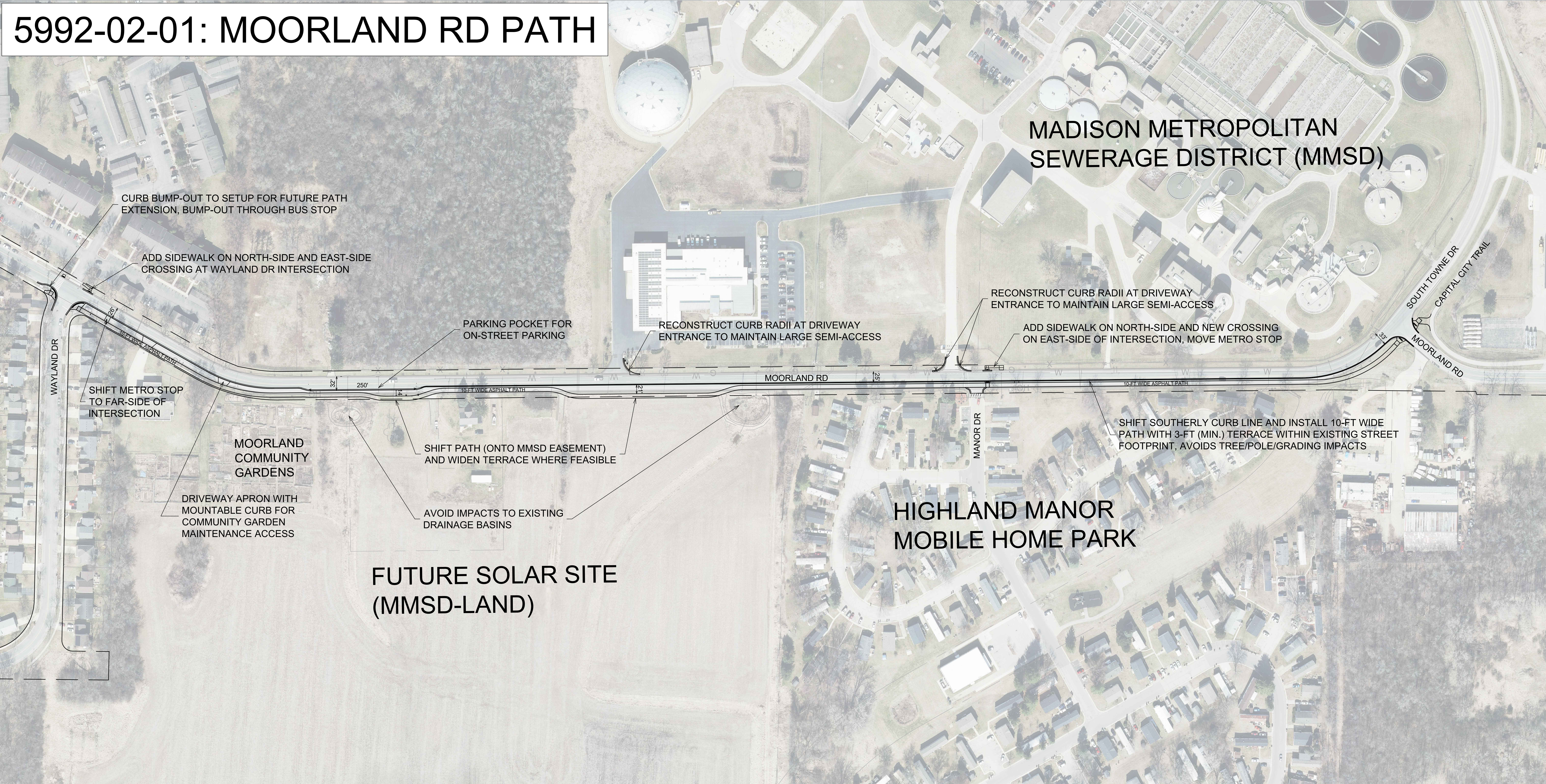
11' Travel Lane

Grass Terrace  
(Varies, 3' min.)

10' Shared-Use Path  
(Bikes + Peds)



# 5992-02-01: MOORLAND RD PATH



**MADISON METROPOLITAN SEWERAGE DISTRICT (MMSD)**

**HIGHLAND MANOR MOBILE HOME PARK**

**FUTURE SOLAR SITE (MMSD-LAND)**

CURB BUMP-OUT TO SETUP FOR FUTURE PATH EXTENSION, BUMP-OUT THROUGH BUS STOP

ADD SIDEWALK ON NORTH-SIDE AND EAST-SIDE CROSSING AT WAYLAND DR INTERSECTION

PARKING POCKET FOR ON-STREET PARKING

RECONSTRUCT CURB RADII AT DRIVEWAY ENTRANCE TO MAINTAIN LARGE SEMI-ACCESS

RECONSTRUCT CURB RADII AT DRIVEWAY ENTRANCE TO MAINTAIN LARGE SEMI-ACCESS

ADD SIDEWALK ON NORTH-SIDE AND NEW CROSSING ON EAST-SIDE OF INTERSECTION, MOVE METRO STOP

SHIFT METRO STOP TO FAR-SIDE OF INTERSECTION

MOORLAND COMMUNITY GARDENS

DRIVEWAY APRON WITH MOUNTABLE CURB FOR COMMUNITY GARDEN MAINTENANCE ACCESS

SHIFT PATH (ONTO MMSD EASEMENT) AND WIDEN TERRACE WHERE FEASIBLE

AVOID IMPACTS TO EXISTING DRAINAGE BASINS

SHIFT SOUTHERLY CURB LINE AND INSTALL 10-FT WIDE PATH WITH 3-FT (MIN.) TERRACE WITHIN EXISTING STREET FOOTPRINT, AVOIDS TREE/POLE/GRADING IMPACTS