



## **THE LEAF**

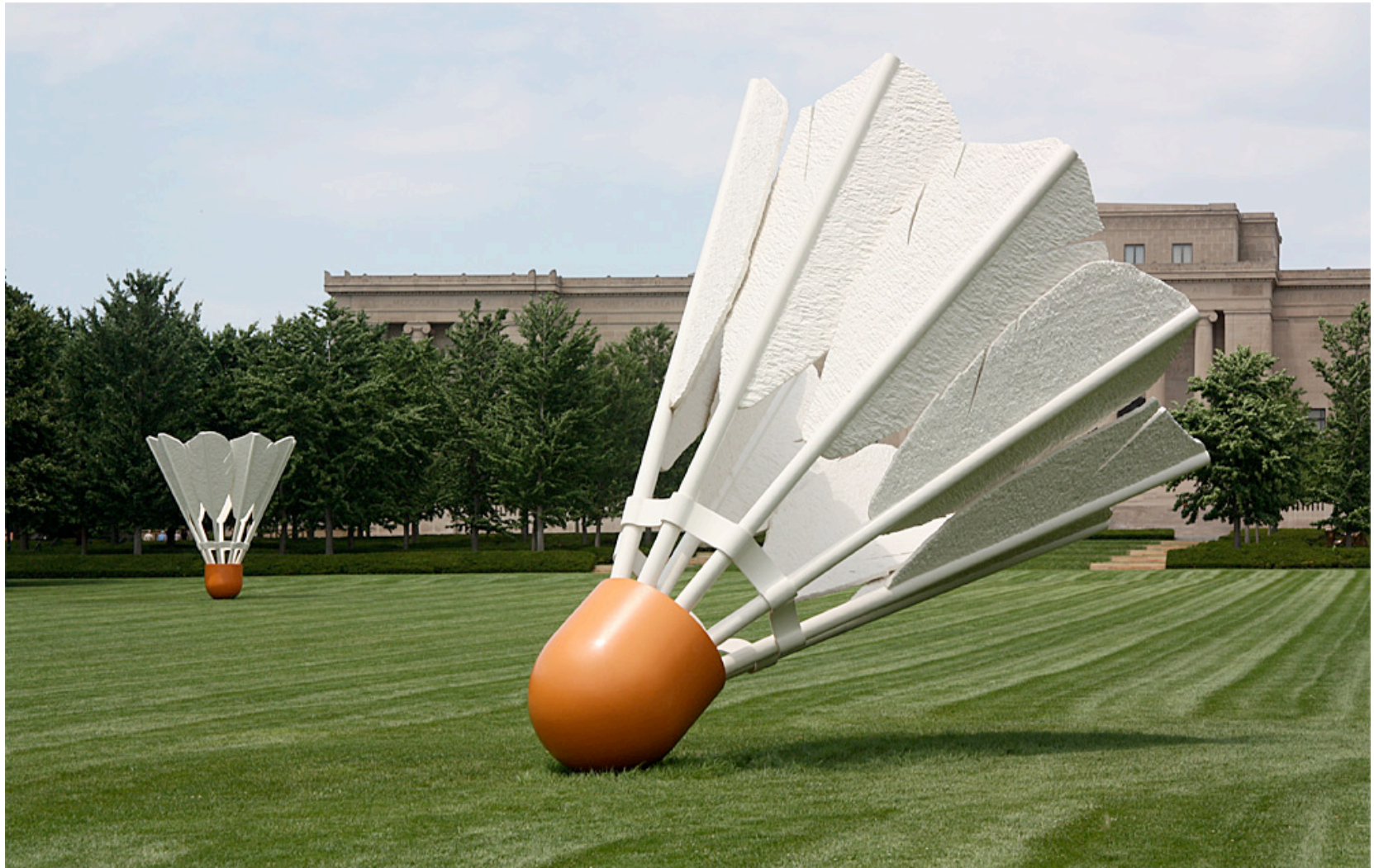
### CONFLUENCE: 700-800 State Street & Library Mall

JILL SEBASTIAN October 22, 2013

DESIGN GOALS: INTERSECTIONS, DESTINATION AND CONNECTIONS.

- A PORTAL – one place to another, a passage through which we are changed
- THE COMMONS – shared core values (UW and City of Madison, State)
- ICONIC SYMBOL – the meeting of town and gown

**A MEANINGFUL THEME THAT IS TIMELESS, FLEXIBLE, DURABLE**



**LARGE SCALE** – Creates a locator, identifier, spotted from a distance.

Claus Oldenberg



Enhance the sense, awareness of weather, nature and human activity, the experience of being out of doors in a different way than elsewhere.

## **WHO AND WHAT PASSES THROUGH THE LIBRARY MALL CONFLUENCE?**

wind, weather, lake effect, leaves, birds, students and citizens – CHANGE





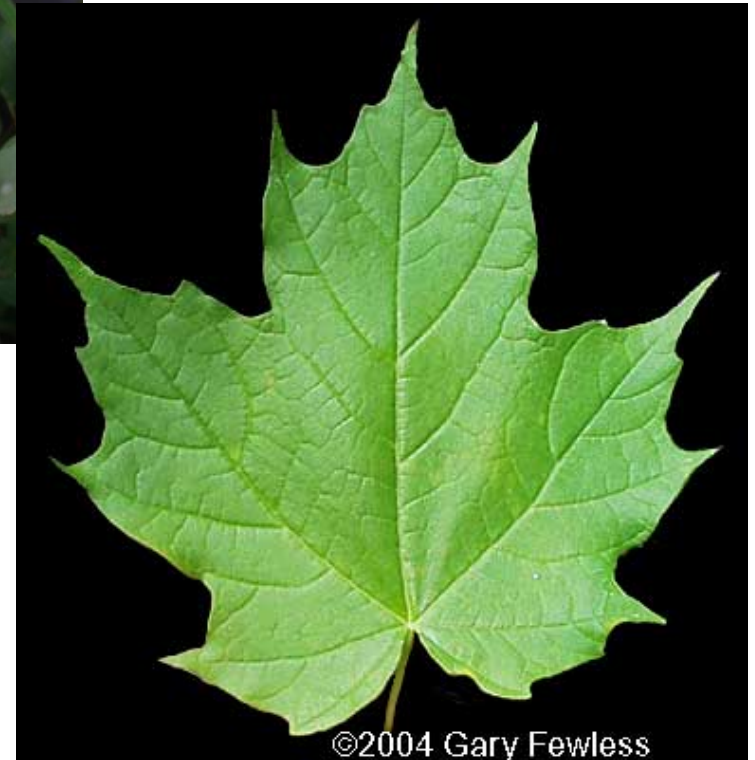
## **THE LEAF** emerged as an ICON

Reflecting upon the rich plant architectural details that give significant meaning to the architecture at the Wisconsin Historic Society and Memorial Library...  
the sugar maple is the Wisconsin state tree.

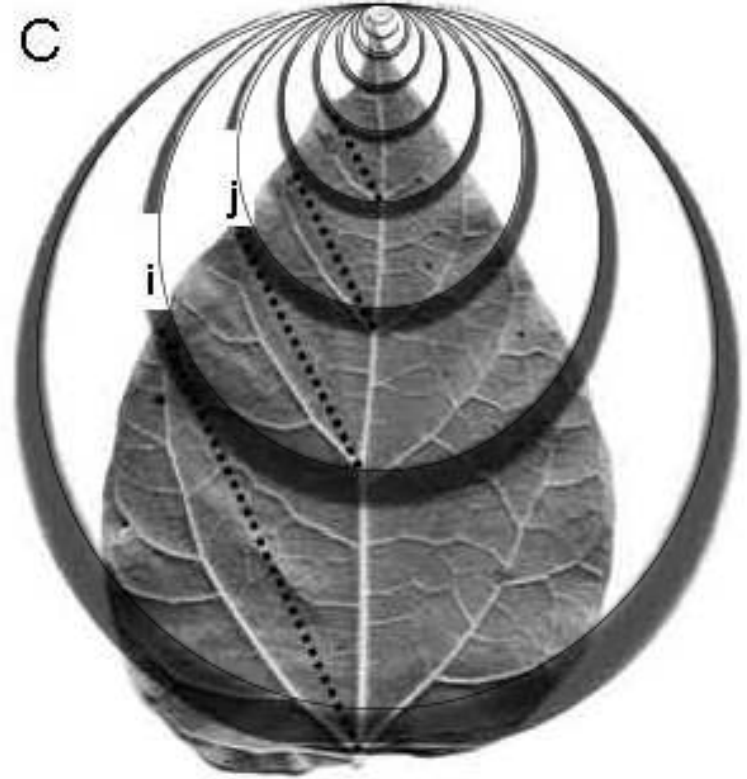
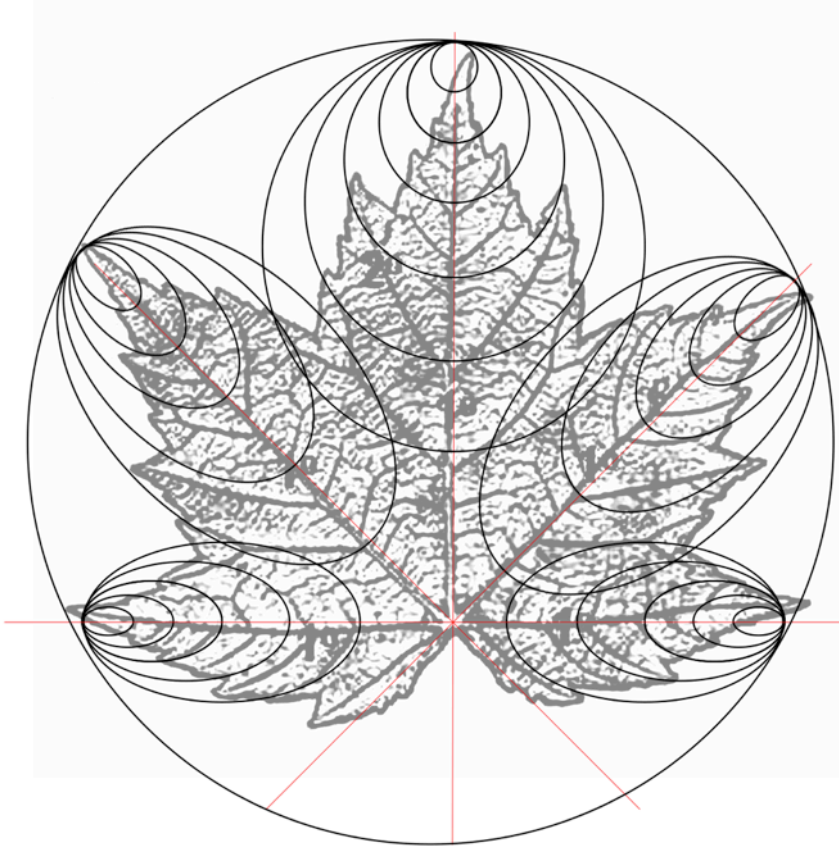


Other local species such as elm and burr oak leaves were considered.

However, the sugar maple's history of sustaining early populations was compelling and the leaf's palmate shape offered rich opportunities for meaningful sculptural interpretation.







Metaphoric wave analysis – mathematical interpretation of vein branching in leaves

**A METAPHOR FOR CHANGE, MOVEMENT, CONNECTIONS, ENVIRONMENT**

Connecting the waves on Lake Mendota to the Maple (Wisconsin state tree)



Lighting along the oval ridges or waves



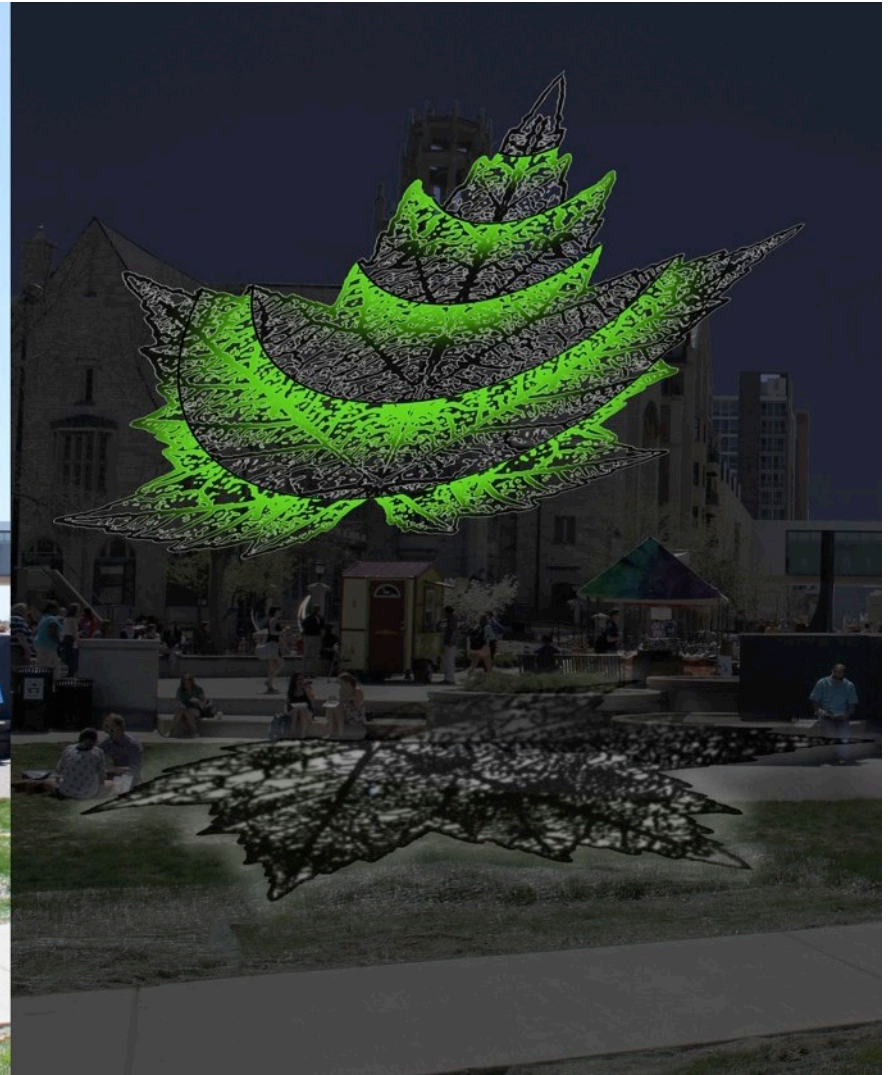
Cut metal latticework

**CREATING ORIGINAL FORM FROM COMMON, UNDERSTOOD IMAGES  
THROUGH INTERSECTING DIMENSIONS OF MEANING.**





Day



Night (Shown with a simpler metaphoric wave pattern)





The range of color in the sugar maple to consider in lighting.



Shadows cast over the course of a day. Morning...





mid day...



afternoon...





early evening. The shadow resembles a bird in flight as does the shaping of the leaf.

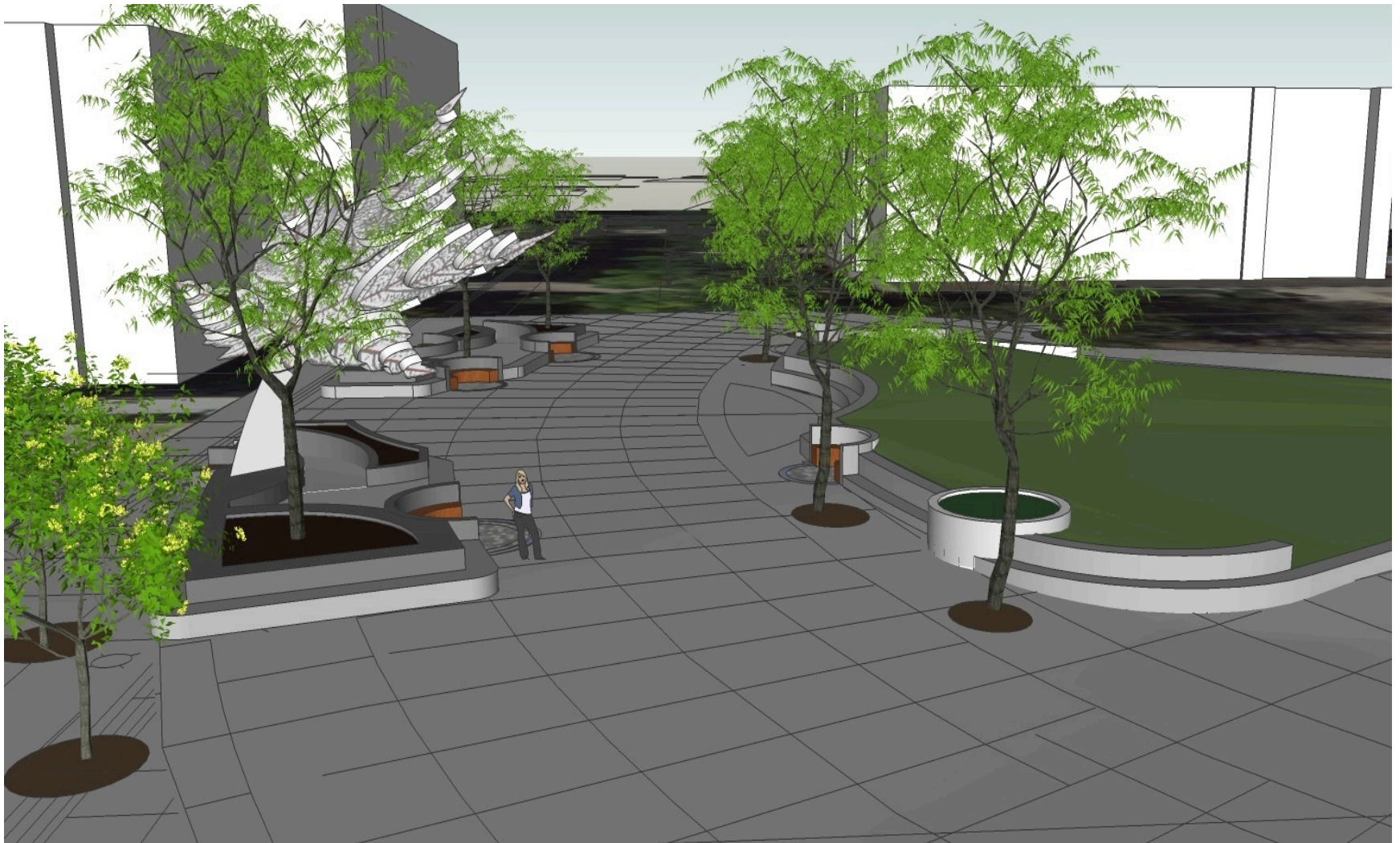


Looking northwest from high vantage point from Saint Paul's





Looking east



Looking west





Looking northeast, Historical Society in background.