



Barriques is a locally owned cafe/ wine shop business in Madison and surrounding communities. We are a neighborhood based establishment that provides a comfortable space for people to come together to converse, to launch ideas for a new company, to find an old friend or meet a new one, an escape for new mothers, a meeting point for a bicycle ride, a pick me up on the commute, to prepare for an exam, to get online, to wind down after a morning work out, an afternoon break, or just a nice walk to read the morning newspaper. Conceptually the community meeting space that Barriques provides is not unlike the diner cafe from my hometown of Mt. Horeb where I remember my father would go to every morning before work to meet with others to discuss anything from world policy to the changing of the weather. Barriques has a large selection of organic, Fair Trade coffees, specialty teas, breakfast sandwiches, a lunch/ dinner selection of wraps and sandwiches, cheese plates, tapas, wines by the glass and specialty beers on tap. We feature weekly wine tastings in our stores to help people learn about wine and develop their own palate.

Project at 961 & 967 S. Park Street: Our intention is to develop the building at 961 S. Park with accessible parking for bicycles and vehicles to easily access our space on the 967 S. Park parcel. The existing building is approx. 2,700sq ft with a Quonset design roof line and a cinder block exterior. We are planning to add architectural features to exterior like awnings, adding an additional 12' window, new ADA accessible aluminum & glass front door, tree & bush plantings along the Park St corridor, bicycle racks, new paint and signage. Accessible parking would be a one way starting from Parr Street on the north side of the building, wrapping around and exiting on to Park St. We felt that by designing the one way returning to Park St. we would mitigate parking and impact on the Monona Bay neighborhood. The 967 S. Park parcel would contain an outdoor seating area with tables and umbrellas, a red maple in the middle and two Heritage River Birch trees on the Park St. side to add shade and visual accents/ barriers to the commuting traffic. Along the seating area there would be angled parking stalls and an ADA parking stall for vehicle parking.

The interior space of the new Barriques, because of the Quonset ceiling with steel trusses and high ceiling heights, lends itself to a more industrial feel. We felt by utilizing recycled materials, barn door applications, stained concrete, refurbished woods and leaving the ceiling exposed would solidify a more urban atmosphere. Interior seating would be provided for approx. 64 guests along the front side of the building with an open room that could be closed off with rolling barn doors for private neighborhood meetings, etc. The café counter would run parallel to the south wall from the front towards the back of the building with a contiguous kitchen space for sandwich, bakery and smoothie preparations. Color tones would be earthy, natural and raw to match a more organic, warm atmosphere.

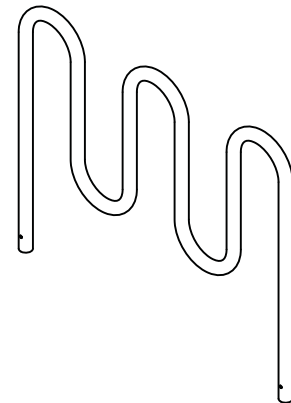
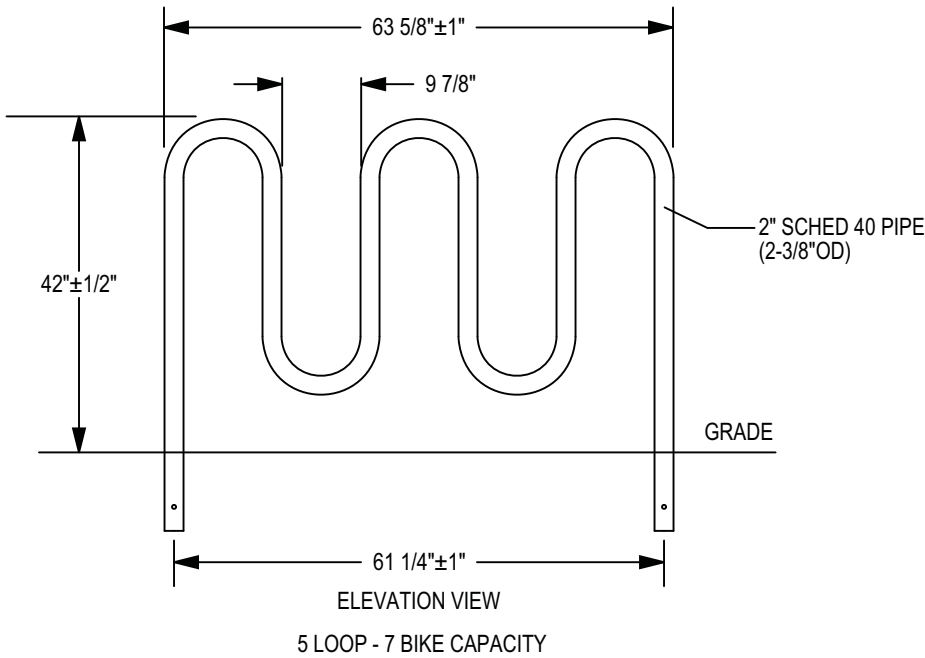
We appreciate your time in looking over our project and encourage any input from you, may it be criticism or praise, because we are always looking for ways to improve Barriques.

Sincerely,

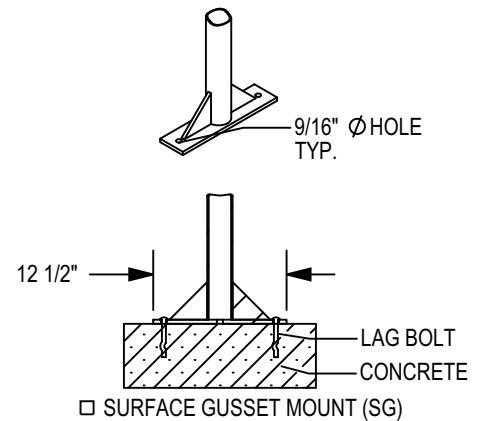
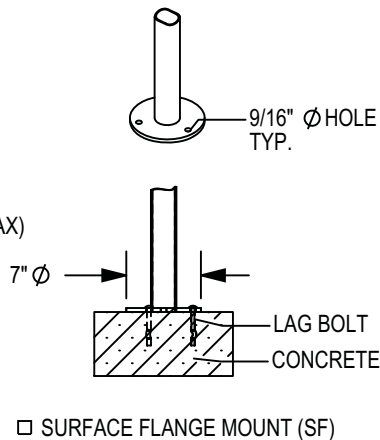
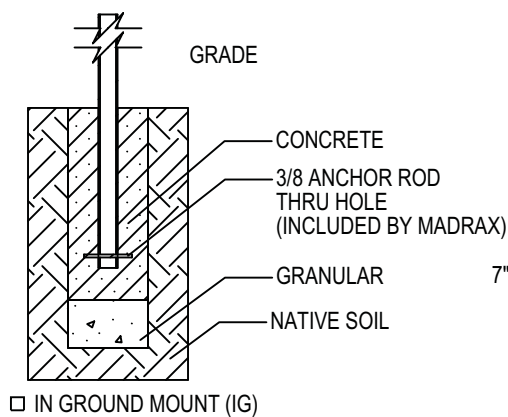
Finn V. Berge

finn@barriquesmarket.com

608-284-9463



CHECK DESIRED MOUNT □



SECTION VIEWS

PRODUCT: HW238-7-IG(SF,SG)
 DESCRIPTION: HEAVY DUTY WINDER BIKE RACK
 7 BIKE, SURFACE OR IN GROUND MOUNT
 DATE: 8-5-02
 ENG: TLG

CONFIDENTIAL DRAWING AND INFORMATION IS NOT TO BE COPIED OR DISCLOSED TO OTHERS WITHOUT THE CONSENT OF TRILARY, INC. SPECIFICATIONS ARE SUBJECT TO CHANGE WITHOUT NOTICE.

©2007 TRILARY, INC. ALL PROPRIETARY RIGHTS RESERVED.

NOTES:

1. INSTALL BIKE RACKS ACCORDING TO MANUFACTURER'S SPECIFICATIONS.
2. CONSULTANT TO SELECT COLOR(FINISH), SEE MANUFACTURER'S SPECIFICATIONS.
3. SEE SITE PLAN FOR LOCATION OR CONSULT OWNER.

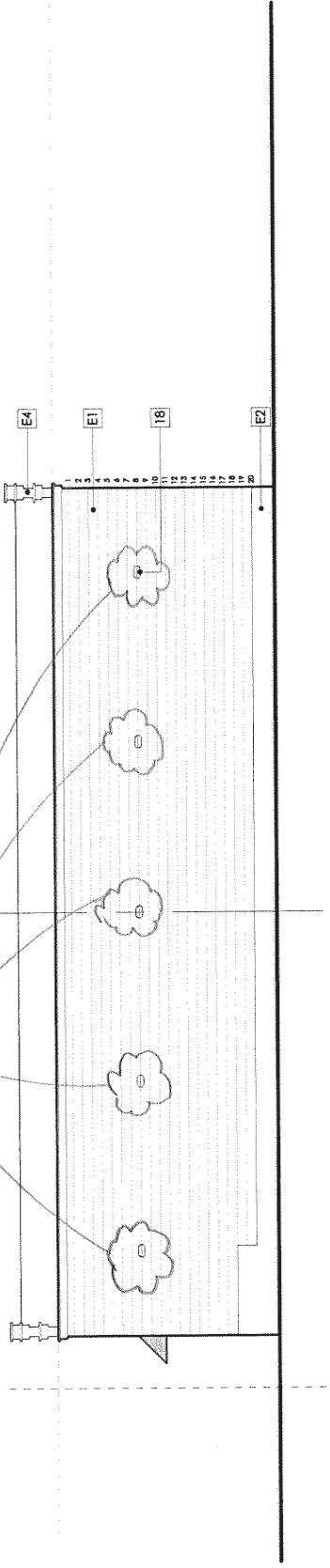


Barnett Architecture
118 NORTH BREEZE TERRACE
SUITE 1
MADISON, WISCONSIN 53726
608.233.4538
barnettarchitecture.com

**NEW LOCATION FOR:
BARRIQUES**
961 SOUTH PARK ST.
967. SOUTH PARK ST.
MADISON, WI 53715

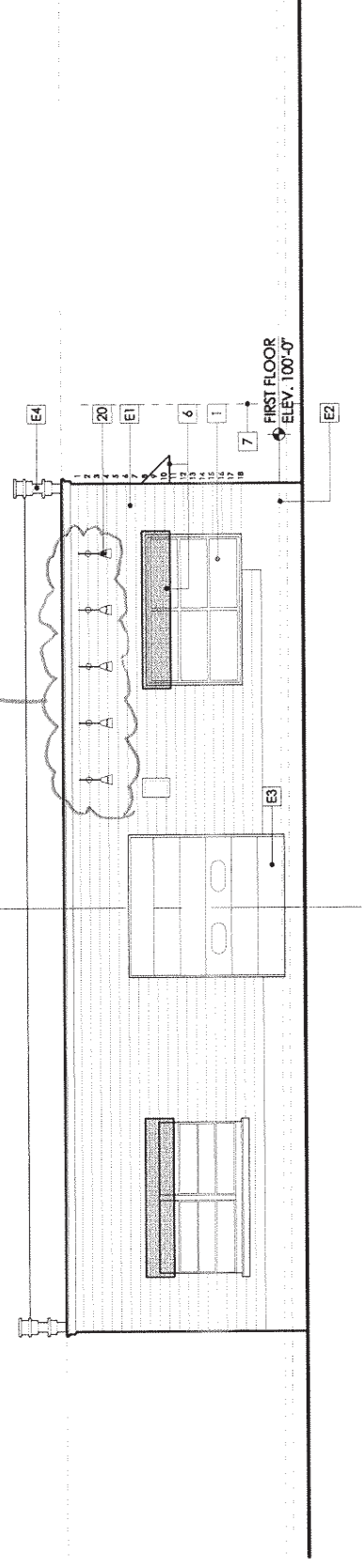


Fixt-type "B" 8' above grade



1 SOUTH ELEVATION
SCALE: 1/8"=1'-0"

Fixt-type "A" 10' above grade



2 NORTH ELEVATION
SCALE: 1/8"=1'-0"



**PRELIMINARY
NOT FOR CONSTRUCTION**
DRAWING ISSUE DATES
2-23-011

4.2

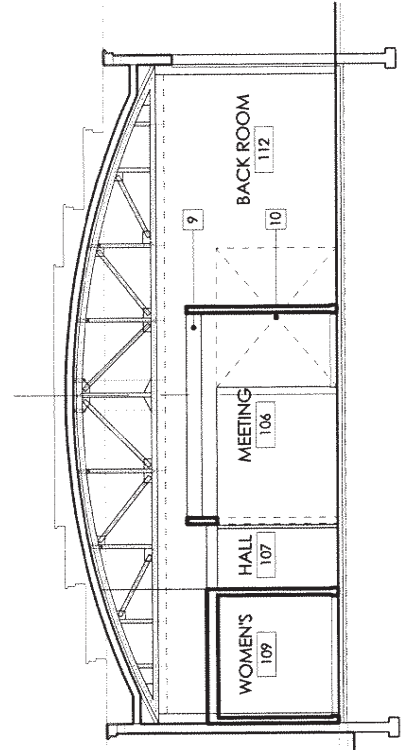
This document is the property of Barnett Architecture, Inc. and is not to be reproduced, distributed, or used in any way without the written consent of Barnett Architecture, Inc.



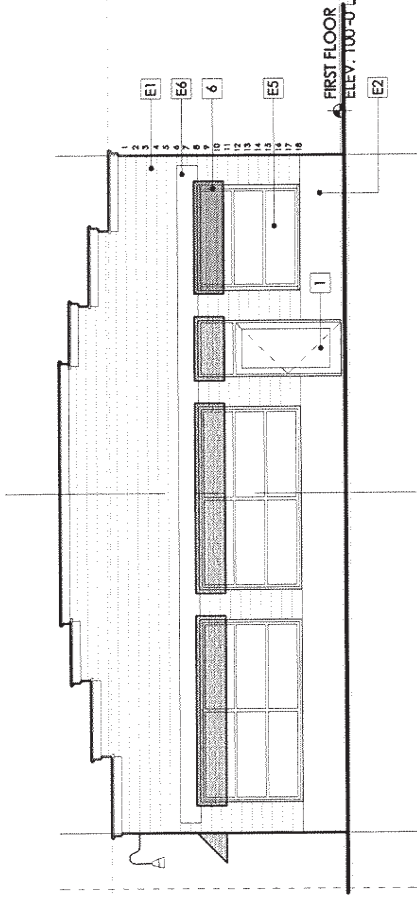
Barnett Architecture
118 NORTH BRIESE TERRACE
SUITE 1
MADISON, WISCONSIN 53726
608.233.4536
barnettarchitecture.com

NEW LOCATION FOR:
BARRIQUES

961 SOUTH PARK ST.
967, SOUTH PARK ST.
MADISON, WI 53715

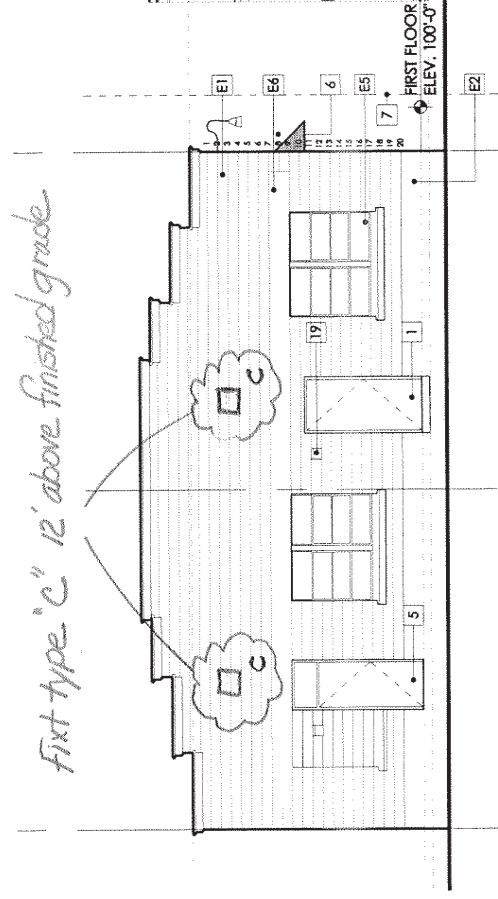


3 SECTION LOOKING WEST
SCALE: 1/8"=1'-0"

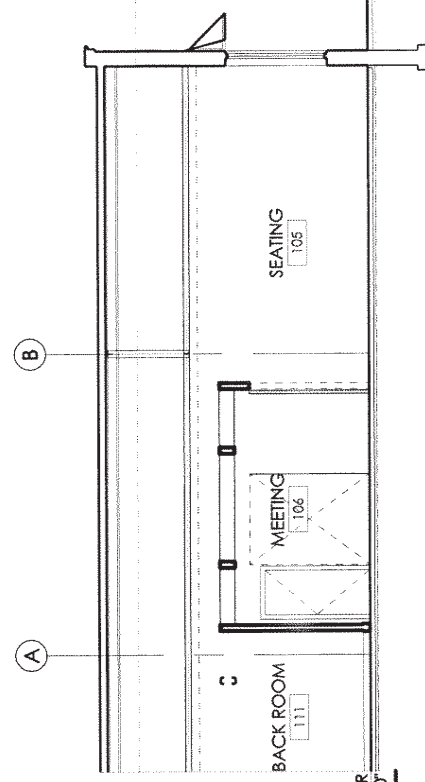


1 WEST ELEVATION
SCALE: 1/8"=1'-0"

First type "C" 12' above finished grade



2 EAST ELEVATION
SCALE: 1/8"=1'-0"



4 SECTION LOOKING SOUTH
SCALE: 1/8"=1'-0"



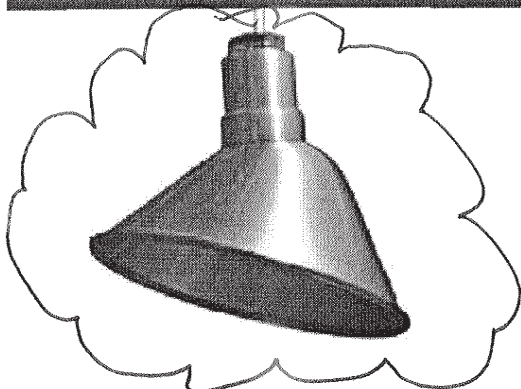
PRELIMINARY
NOT FOR CONSTRUCTION
DRAWING ISSUE DATES
2-23-011

4.1

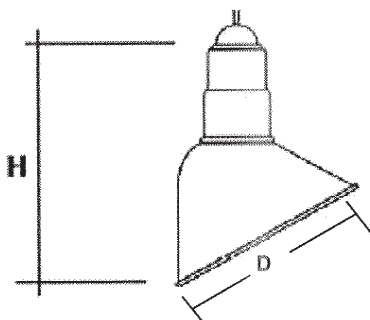
This drawing is the property of Barnett Architecture. It is to be used only for the project and location identified on the drawing. It is not to be used for any other project or location without the written consent of Barnett Architecture.

Fixture type "A"

AA-ANGLE REFLECTOR **ARK**



ANGLE REFLECTOR AA-11-SN shown:
Satin Nickel finish 11" diameter
Available in standard colors plus satin nickel and solid copper.

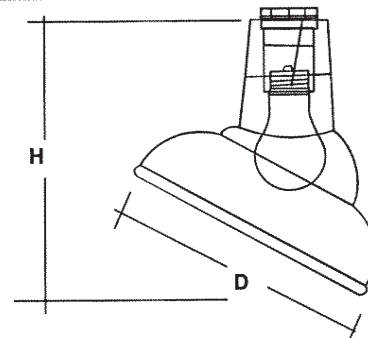
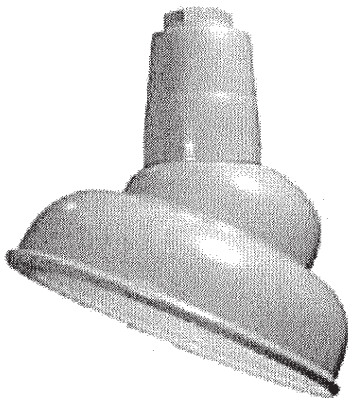


ANGLE REFLECTOR

Perfect for Highlighting Signs and Displays

| CATALOG # | DIAM. (D) | HEIGHT (H) | MAX. WATT. |
|-----------|-----------|------------|------------|
| AA-7 | 7" | 7" | 150W |
| AA-9 | 9" | 9" | 150W |
| AA-11 | 11" | 10" | 200W |
| AA-14 | 14" | 14" | 200W |

AA-11E & AA-14E-ANGLE ROUND REFLECTOR



AA-11E AA-14E ANGLE ROUND REFLECTOR

CLASSIC ELEGANCE AND SIMPLICITY OF DESIGN

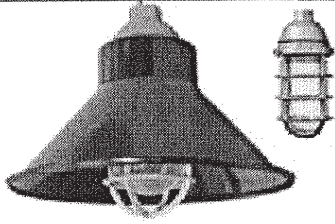
ANGLE ROUND REFLECTOR AA-11E-LG shown:
Light Green Finish, 11" Diameter
Available in standard colors plus satin nickel and solid copper.

| CATALOG # | DIAM. (D) | HEIGHT (H) | MAX. WATT. |
|-----------|-----------|------------|------------|
| AA-11E | 11" | 10-1/4" | 200W |
| AA-14E | 14" | 12" | 200W |



Fixture type "A"

H REFLECTOR

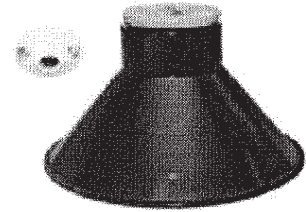


H12-AVP21
WITH AVP21

H REFLECTOR

FOR PORCELAIN CEILING LAMP HOLDERS KEYLESS
OR VAPOR PROOF FIXTURE (ORDER SEPARATELY)

| CATALOG # | DIAM.(D) | HEIGHT (H) |
|------------|----------|------------|
| H12 | 12" | 6" |
| H16 | 16" | 10" |
| H20 | 20" | 12" |
| H12-AVP21 | 12" | 6" |
| H16-AVP21 | 16" | 10" |
| H20-AVP-21 | 20" | 12" |



H12
WITH PORCELAIN CEILING
LAMP HOLDERS KEYLESS

Available in standard colors plus satin nickel and solid copper.

TECHNICAL INFORMATION

AD-12 & AH-12

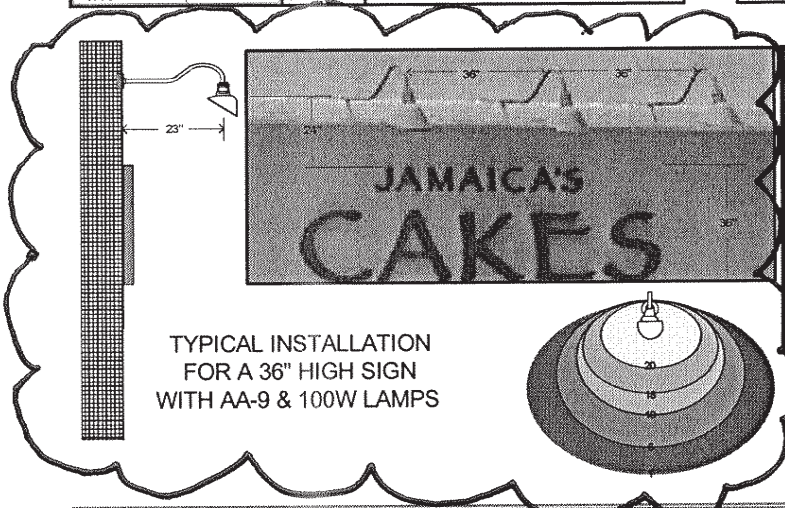
200 A21 LAMPS
4010 LUMENS-SPAC.CRIT.=1.0

| ANG. | CP. | LUM. | ZONE | LUMENS | %LAMP | | | | | | | | | |
|------|------|------|--------|--------|-------|----|----|----|----|----|----|----|----|----|
| 0 | 1357 | | 0-30 | 1033 | 25.7 | | | | | | | | | |
| 5 | 1331 | 127 | 0-60 | 2834 | 70.6 | | | | | | | | | |
| 15 | 1268 | 360 | 0-90 | 3206 | 82.1 | | | | | | | | | |
| 25 | 1181 | 546 | 90-180 | 0 | 0 | | | | | | | | | |
| 35 | 1043 | 653 | 0-180 | 3298 | 82.1 | | | | | | | | | |
| 45 | 883 | 670 | | | | | | | | | | | | |
| 55 | 515 | 478 | Rf | 20 | | | | | | | | | | |
| 65 | 263 | 271 | Rc | 80 | 50 | 10 | 0 | | | | | | | |
| 75 | 139 | 148 | Rw | 70 | 50 | 30 | 10 | 50 | 30 | 10 | 0 | | | |
| 85 | 38 | 43 | Rcr | | | | | | | | | | | |
| 90 | 0 | 0 | 0 | 98 | 98 | 98 | 91 | 91 | 84 | 84 | 82 | | | |
| 95 | 0 | 0 | 1 | 90 | 87 | 84 | 81 | 81 | 79 | 77 | 75 | 74 | 72 | 71 |
| 105 | 0 | 0 | 2 | 83 | 77 | 71 | 67 | 72 | 68 | 65 | 67 | 64 | 62 | 60 |
| 115 | 0 | 0 | 3 | 76 | 68 | 62 | 57 | 64 | 59 | 55 | 60 | 56 | 53 | 52 |
| 125 | 0 | 0 | 4 | 70 | 61 | 54 | 49 | 58 | 52 | 48 | 54 | 50 | 47 | 45 |
| 135 | 0 | 0 | 5 | 65 | 55 | 48 | 42 | 52 | 46 | 42 | 49 | 44 | 41 | 39 |
| 145 | 0 | 0 | 6 | 60 | 49 | 42 | 37 | 47 | 41 | 37 | 44 | 40 | 36 | 35 |
| 155 | 0 | 0 | 7 | 56 | 45 | 38 | 33 | 43 | 37 | 33 | 41 | 36 | 32 | 31 |
| 165 | 0 | 0 | 8 | 52 | 41 | 34 | 30 | 39 | 34 | 29 | 37 | 33 | 29 | 28 |
| 175 | 0 | 0 | 9 | 48 | 38 | 31 | 27 | 36 | 31 | 27 | 35 | 30 | 26 | 25 |
| 180 | 0 | 0 | 10 | 45 | 35 | 29 | 24 | 34 | 28 | 24 | 32 | 27 | 24 | 23 |

AC-14 AUL-16

150 A21 LAMPS
2850 LUMENS-SPAC.CRIT.=1.8

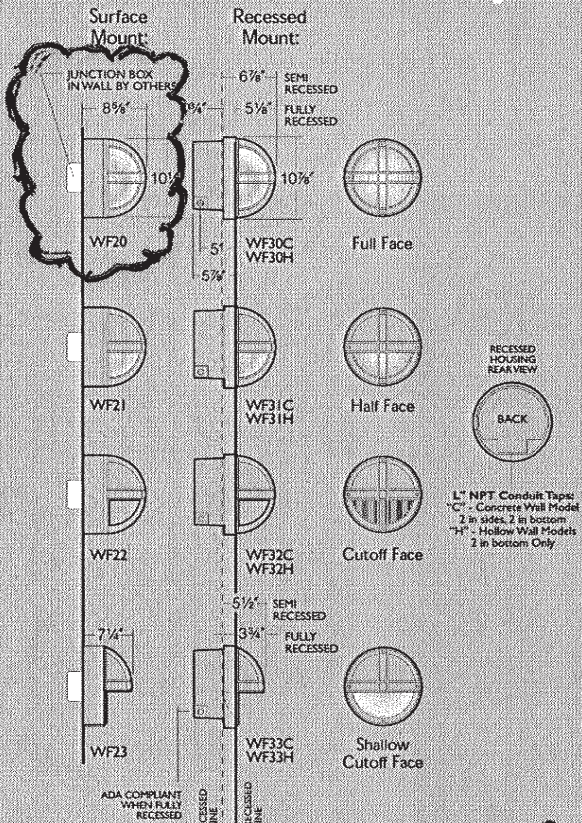
| ANG. | CP. | LUM. | ZONE | LUMENS | %LAMP | | | | | | | | | |
|------|-----|------|--------|--------|-------|-----|----|----|----|----|----|----|----|----|
| 0 | 716 | | 0-30 | 542 | 19 | | | | | | | | | |
| 5 | 686 | 66 | 0-60 | 1798 | 63 | | | | | | | | | |
| 15 | 653 | 185 | 0-90 | 2439 | 85.5 | | | | | | | | | |
| 25 | 629 | 291 | 90-180 | 5 | 0.1 | | | | | | | | | |
| 35 | 610 | 381 | 0-180 | 2444 | 85.7 | | | | | | | | | |
| 45 | 561 | 434 | | | | | | | | | | | | |
| 55 | 493 | 441 | Rf | 20 | | | | | | | | | | |
| 65 | 397 | 387 | Rc | 80 | 50 | 10 | 0 | | | | | | | |
| 75 | 215 | 218 | Rw | 70 | 50 | 30 | 10 | 50 | 30 | 10 | 0 | | | |
| 85 | 23 | 36 | Rcr | | | | | | | | | | | |
| 90 | 5 | 0 | 0 | 102 | 102 | 102 | 95 | 95 | 95 | 87 | 87 | 87 | 88 | |
| 95 | 0 | 5 | 1 | 93 | 88 | 84 | 81 | 83 | 80 | 77 | 78 | 74 | 72 | 70 |
| 105 | 0 | 0 | 2 | 83 | 76 | 70 | 64 | 71 | 66 | 62 | 65 | 62 | 59 | 57 |
| 115 | 0 | 0 | 3 | 75 | 68 | 58 | 52 | 62 | 56 | 51 | 57 | 53 | 49 | 47 |
| 125 | 0 | 0 | 4 | 69 | 58 | 50 | 43 | 54 | 48 | 42 | 50 | 45 | 41 | 39 |
| 135 | 0 | 0 | 5 | 63 | 51 | 43 | 37 | 48 | 41 | 36 | 45 | 39 | 35 | 33 |
| 145 | 0 | 0 | 6 | 58 | 46 | 37 | 32 | 43 | 36 | 31 | 40 | 35 | 31 | 29 |
| 155 | 0 | 0 | 7 | 53 | 41 | 33 | 28 | 39 | 32 | 27 | 36 | 31 | 27 | 25 |
| 165 | 0 | 0 | 8 | 49 | 37 | 30 | 24 | 35 | 29 | 24 | 33 | 28 | 24 | 22 |
| 175 | 0 | 0 | 9 | 46 | 34 | 27 | 22 | 33 | 26 | 22 | 31 | 25 | 21 | 20 |
| 180 | 0 | 0 | 10 | 43 | 31 | 24 | 20 | 30 | 24 | 19 | 28 | 23 | 19 | 18 |



Fixture type "B"



Luminaire Specifications



Housing: Surface Mount: Die-cast, low copper (<6% Cu) aluminum alloy with double side walls. Zinc plated steel mounting plate supplied for mounting to standard 3" or 4" junction box.

Recessed Concrete: Die-cast, low copper (<6% Cu) aluminum alloy with clear anodize under powder coat finish to match louver and face plate. Integral junction box (21 cubic inch volume) with four 3/4" NPT conduit taps. Presswood niche cover provided as temporary protection against moisture.

Recessed Hollow Wall: Die-cast, low copper (<6% Cu) aluminum alloy with clear anodize under powder coat finish to match louver and face plate. Integral junction box (21 cubic inch volume) with four 3/4" NPT conduit taps. Presswood niche cover provided as temporary protection against moisture. Supplied with adjustable stud mount brackets plus insulation detector in place of one side conduit tap. Quick disconnect plug supplied for electrical module.

Face Plate: Die-cast, low copper (<6% Cu) aluminum alloy with vertical and horizontal double ribs covering the full hemisphere. Ribs are minimum 3/8" depth and 3/16" thickness. Secures to housing with four stainless steel captive socket head screws.

Half Face: Solid upper half

Cutoff Face: Solid upper half and solid lower half with vertical light baffles.

Shallow Cutoff Face: Solid upper half protruding 3/4" from housing and concave lower half.

Lens: Molded and heat treated glass, 3/16" minimum thickness with internal sandblast. Retained in faceplate and sealed with a one-piece silicone gasket.

Full and Half Face: Choice of smooth (S) or internal prisms (P).

Cutoff and Shallow Cutoff Face: Flat tempered glass only.

LED Driver: 1or 2 constant current electronic driver(s). Rated for 15 watts each: 15W=900lm, 30W=1800lm. Available in 120V or 277V input. -40°F starting temperature. All drivers are Underwriters Laboratories recognized.

Finish: Super TGIC thermoset polyester powder coat paint, 2.5 mil nominal thickness, applied over a titanated zirconium conversion coating; 2500 hour salt spray test endurance rating. Standard colors are Black, Dark Bronze, Light Gray, Stealth Gray, Platinum Silver, or White. Custom colors are available, consult representative.

Pour Items: Recessed housings, devoid of all electrical components. Protective presswood niche covers are supplied to temporarily seal the open housings until the electrical modules and face plates are ready to install. Quick disconnect plugs supplied for electrical modules. For recessed hollow wall configurations, insulation detectors supplied in place of one conduit tap for insulation is permitted above the housing or within 3" of sides and bottom. Detectors will cut power if fixtures overheat due to insulation.

Finishing Items: Electrical modules and face plates. Each set of finishing items shall be in one container, clearly marked with the fixture catalog number.

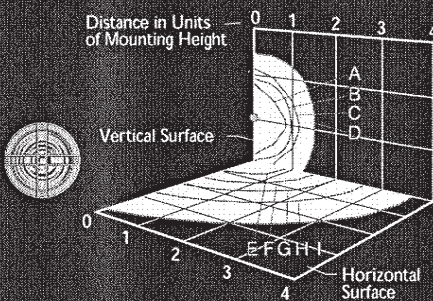
Caution: Fixtures must be grounded in accordance with national, state, and/or local electrical codes. Failure to do so may result in serious personal injury.

Bulbs are 22W (1200 Lumens)

Photometrics

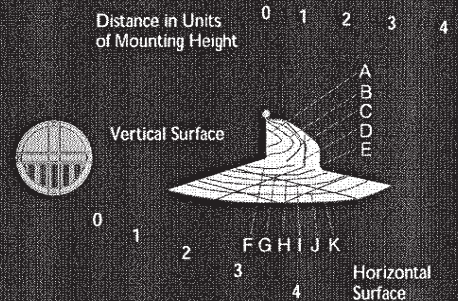
WF20: Full Face - 30W LED
Initial Footcandles at Listed Mounting Height
1800 lumens

| | 7 | 8 | 9 | 10 |
|---|-----|-----|-----|-----|
| A | .40 | .31 | .24 | .20 |
| B | .20 | .15 | .12 | .10 |
| C | .10 | .10 | .06 | .05 |
| D | .04 | .03 | .02 | .02 |
| E | .83 | .64 | .50 | .41 |
| F | .33 | .25 | .20 | .16 |
| G | .20 | .15 | .12 | .10 |
| H | .10 | .10 | .06 | .05 |
| I | .04 | .03 | .02 | .02 |



WF22: Cutoff Face - 30W LED
Initial Footcandles at Listed Mounting Height
1800 lumens

| | 7 | 8 | 9 | 10 |
|---|-----|-----|-----|-----|
| A | .40 | .31 | .24 | .20 |
| B | .20 | .15 | .12 | .10 |
| C | .10 | .10 | .06 | .05 |
| D | .04 | .03 | .02 | .02 |
| E | .01 | .01 | .01 | .01 |
| F | .83 | .64 | .50 | .41 |
| G | .33 | .25 | .20 | .16 |
| H | .20 | .15 | .12 | .10 |
| I | .01 | .10 | .06 | .05 |
| J | .04 | .03 | .02 | .02 |
| K | .01 | .01 | .01 | .01 |



KIM LIGHTING
www.kimlighting.com

MAILING ADDRESS
P.O. BOX 60080
CITY OF INDUSTRY, CA
91716-0080

BUSINESS ADDRESS
16555 EAST GALE AVENUE
CITY OF INDUSTRY, CA 91745
PHONE: 626.968.5666
FAX: 626.369.2695

Printed in U.S.A.
5504308296
Version 2.0 (10/08)

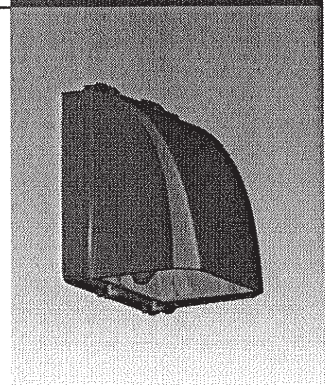
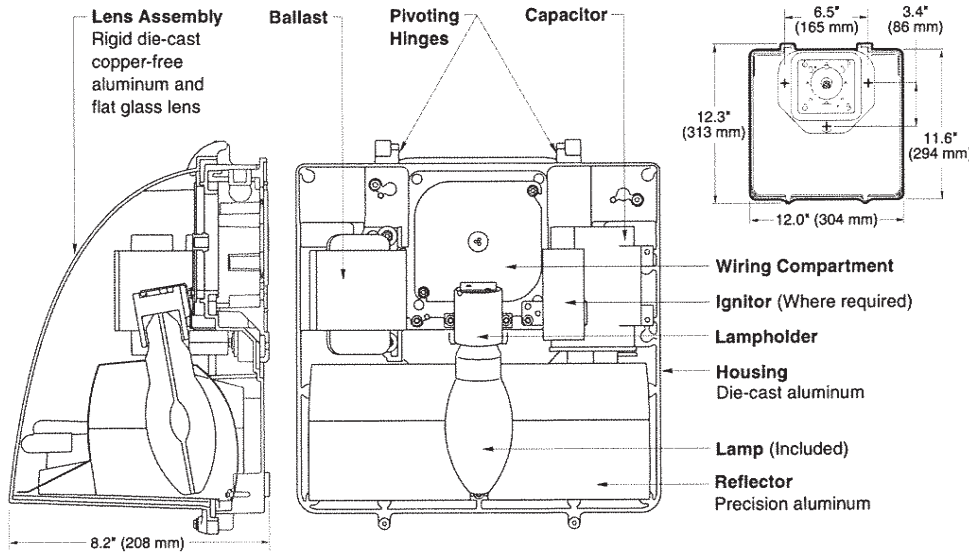


Fixture Type "C"

DIRECT MOUNT

12" FULL CUTOFF WALL PACK

**GWCO-12
SERIES**



| SPEC # | WATTAGE | CATALOG # |
|---------------------------------|-----------|-----------------|
| PULSE START METAL HALIDE | | |
| | 125W PSMH | MGWC0612-(a)(b) |
| | 150W PSMH | MGWC0615-(a)(b) |
| METAL HALIDE | | |
| | 50W MH | MGWC0405-(a)(b) |
| | 70W MH | MGWC0407-(a)(b) |
| | 100W MH | MGWC0410-(a)(b) |
| | 175W MH | MGWC0417-(a)(b) |
| HIGH PRESSURE SODIUM | | |
| | 35W HPS | MGWC0503-(a)(b) |
| | 50W HPS | MGWC0505-(a)(b) |
| | 70W HPS | MGWC0507-(a)(b) |
| | 100W HPS | MGWC0510-(a)(b) |
| | 150W HPS | MGWC0515-(a)(b) |

Specify (a) Voltage & (b) Options.

| (a) VOLTAGE SUFFIX KEY | |
|------------------------|---|
| D | 120/277V (Standard: 125W PSMH; 50 – 100W MH; 50W HPS) |
| M | 120/208/240/277V (Standard: 150W PSMH; 175W MH; 70 – 150W HPS) |
| T | 120/277/347V (Canada Only) (Standard: 150W PSMH; 70 – 175W MH; 70 – 150W HPS) |
| 1 | 120V (Standard: 35W HPS) |
| 2 | 277V |
| 27 | 277V Reactor (150W PSMH Only) |
| 3 | 208V |
| 4 | 240V |
| 5 | 480V (175W MH; 70 – 150W HPS) |
| 6 | 347V (Canada Only) |

For voltage availability outside the US and Canada, see Bulletin TD-9 or contact your Ruud Lighting authorized International Distributor.

| (b) OPTIONS (factory-installed) | |
|---------------------------------|--|
| -(a)F | Fusing |
| -(a)P | Button Photocell |
| Q | Quartz Standby (includes 100W quartz lamp) (N/A on 277V Reactor) |

Specify (a) Single Voltage — See Voltage Suffix Key

GENERAL DESCRIPTION

Full Cutoff Wall Pack fixture for HID lamp, totally enclosed. Housing is seamless copper-free die-cast aluminum. Lens assembly consists of a hinged, rigid die-cast copper-free aluminum frame and clear borosilicate glass lens held securely inside. Lens frame is easily removable and allows for easy attachment and serviceability using top pivoting hinge. Complete silicone gasketing around lens and gasketing at mounting provide a watertight seal. A precision specular aluminum reflector provides forward throw with wide distribution to ensure wide fixture spacings and maximum light levels. Fixture design provides excellent IES Full Cutoff light distribution without glare. The optical chamber is sealed to reduce dirt and insect contamination. Furnished with e-coated, copper-free, lightweight mounting box designed for installation over standard 4-inch square or octagonal and single-gang J boxes and for conduit entry from top, sides and rear. Designed and approved for easy through-wiring. All fixtures use vertical-lamp position.

ELECTRICAL

Fixture includes clear, medium-base lamp. Pulse-rated porcelain enclosed, 4kv-rated screw-shell-type lampholder. Lamp ignitor included where required. Fixtures require a minimum 90°C temperature feed wire. All ballast assemblies are high-power factor and use the following circuit types:

Reactor (277V PSMH)
150W PSMH

Reactor
120V: 35 – 150W HPS

HX — High Reactance
50 – 100W MH; 50 – 150W HPS

CWA — Constant Wattage Autotransformer
125 & 150W PSMH; 175W MH

LABELS

ANSI lamp wattage label supplied, visible during relamping. UL Listed in the US and Canada for wet locations.

FINISH

Exclusive Colorfast DeltaGuard™ finish features an E-coat epoxy primer with medium bronze ultra-durable powder topcoat, providing excellent resistance to corrosion, ultraviolet degradation and abrasion. The finish is covered by our seven-year limited warranty.

PATENTS

6,867,959 and Patents Pending.

ACCESSORIES

PC-1 Button Photocell (for fixtures set to 120V)

PC-2 Button Photocell (for fixtures set to 208, 240, 277V)

PC*6 Button Photocell (for fixtures set to 347V)



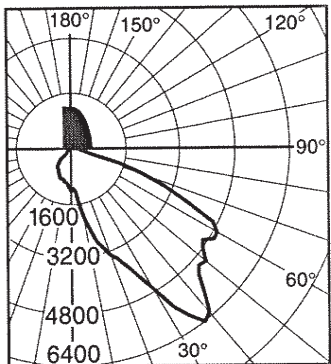
Fixture Type "C"

**GWCO-12
SERIES**

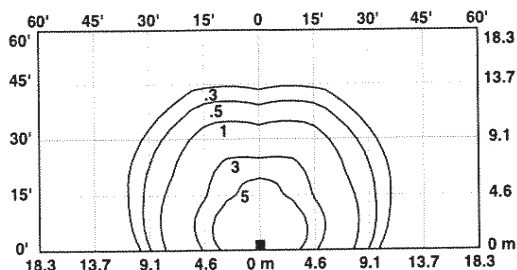
DIRECT MOUNT

12" FULL CUTOFF WALL PACK

Isofootcandle plots show initial footcandles at grade. (Footcandles ÷ 0.0929 = Lux)



**Candlepower Distribution Curve of 175W MH
12" AeroDome Full Cutoff Wall Pack.**



**Isofootcandle plot of one 175W MH
12" AeroDome Full Cutoff Wall Pack at 15' (4.6 m)
mounting height (plan view).**



DATE: 2/25/11 CUSTOMER: Matt Weygandt ADDRESS: 961 S. Park St. Madison, WI MUNICIPALITY: City of Madison REP: Dan Yoder FILE: barriques/approvals/ws-1_specs



SIGNAGE ELEVATIONS: WS - 1

KEY NOTES:

- B- 1/8" Aluminum panel
- C- .063 Welded Aluminum Returns
- D- .080 Aluminum Backer Plate
- E- 1" Trim Cap
- F- Internal LED Illumination (white)
- G- Secondary lead to Remote Power Supply
- H- Wall Section
- I- Nighttime Illumination Rendering

FINISHES:

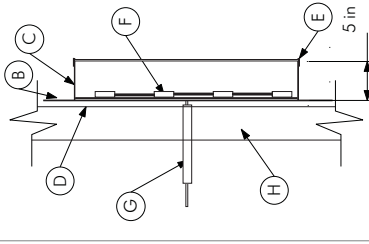
- 1 shot lettering enamel, lighter shade of building color
- Matthews Satin Urethane-Black (panel, returns/trim cap)
- 7328 White acrylic
- Oracal Translucent Vinyl-Jungle Green

CALCULATIONS:

Signable Area:
 7' 6" x 27' 6" = 206 sq.ft.
 45" lined building frontage

Sign Dimensions:
 Box 1 = 12' 0" x 7' 6" = 90sq.ft.
 Net = 84, 96sq.ft.

LETTER SECTION:



DATE:

SCALE: 1/2" = 1'

LANDLORD APPROVAL:

By signing this approval you are hereby authorizing Sign Art Studio LLC to proceed with the work as described. Any deviation from these specifications will become the customer's financial responsibility.

CUSTOMER APPROVAL:

The above artwork and/or conceptual design, less customer provided artwork or plans, is property of Sign Art Studio and may not be reproduced without written consent.

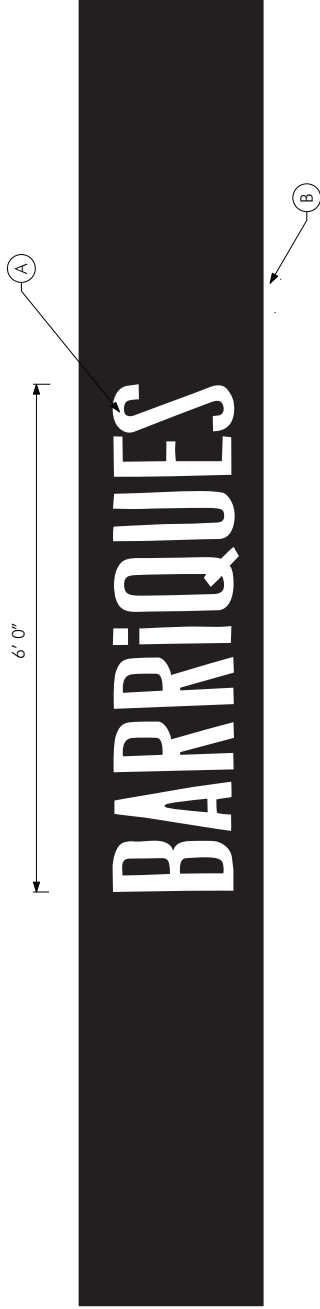


126 S. FIRST ST. MT HOREB, WI 53537 P-608-437-2320
 WWW.SIGNARTMADISON.COM

SHEET

WS-1

DATE: 2/25/11 **CUSTOMER:** Matt Woyandt **ADDRESS:** 961 S. Park St. Madison, WI **MUNICIPALITY:** City of Madison **REP:** Dan Yoder **FILE:** barriques/approvals/ws-2_specs



KEY NOTES:

- A- Hand painted logo.
- B- Customer provided painted stripes.

FINISHES:

- White
- Customer Provided TBD

CALCULATIONS:

Signable Area:
15' 3" x 25' 0" = 381.25 sq.ft.

Sign Dimensions:
Box 1 = 6' 0" x 17' 6" = 88.5sq.ft.
Net = 9sq.ft.

S H E E T
WS-2

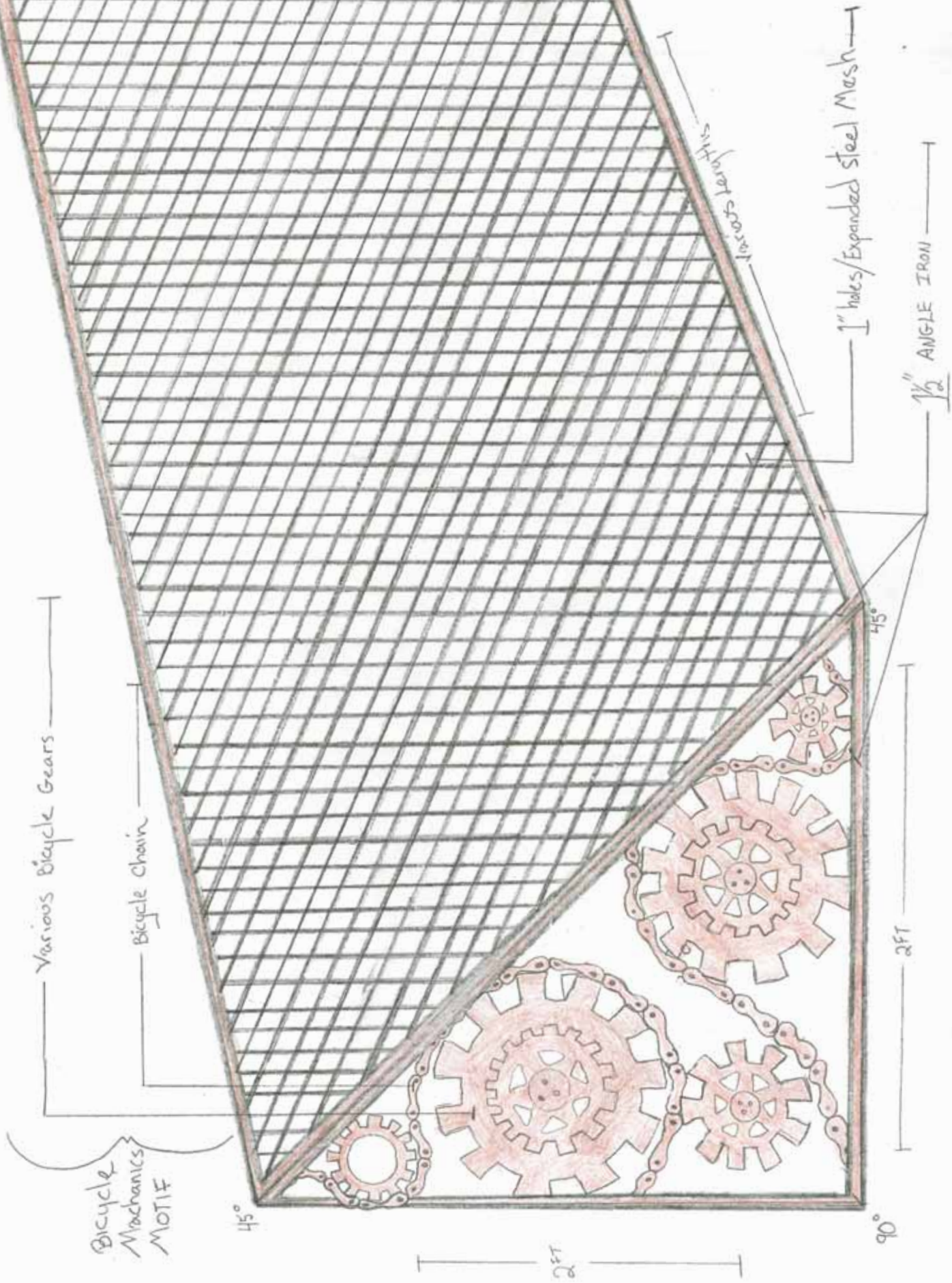
DATE:
SCALE: 1/2" = 1'

CUSTOMER APPROVAL: _____ **LANDLORD APPROVAL:** _____
By signing this approval you are hereby authorizing Sign Art Studio LLC to proceed with the work as described. Any deviation from these specifications will become the customer's financial responsibility.
© The above artwork and or conceptual design, less customer provided artwork or plans, is property of Sign Art Studio and may not be reproduced without written consent.



126 S. FIRST ST. MT HOREB, WI 53537 P-608-437-2320
WWW.SIGNARTMADISON.COM

02/17/11 *[Signature]*



Various Bicycle Gears

Bicycle Chain

Bicycle Mechanics MOTIF

2 FT

2 FT

$1\frac{1}{2}$ ANGLE IRON

1\" holes/Expanded Steel Mesh

Silver Spacers

45°

90°

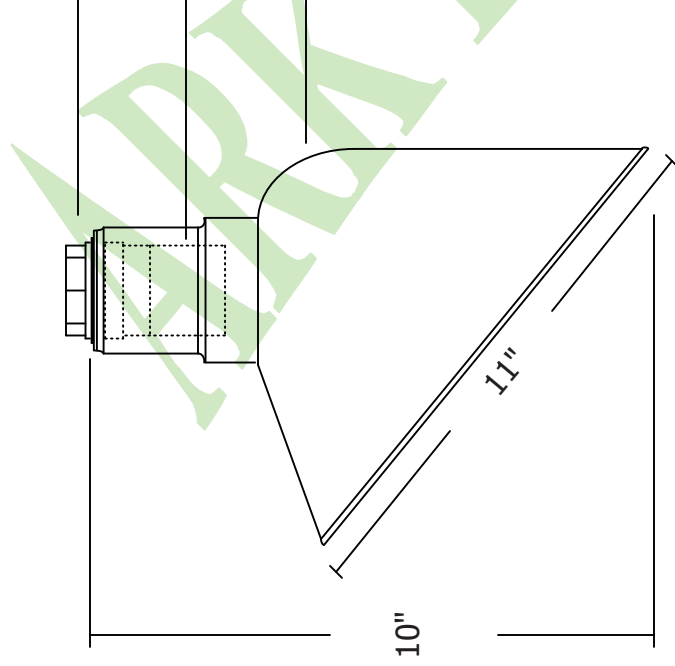
45°



AA-11

L I G H T I N G

11" ANGLE REFLECTOR 200W Max. INC



COVER NUT. Die cast aluminum with 1/2" N.P.T. or 3/4" N.P.T. accepts conduit pipe or cord strain relief.

SOCKET. Two-piece heavy duty ceramic medium base socket.

SHADE. Heavy gauge cold rolled steel, zinc anodized and coated with genuine powder or electro plating. Galvanized finish is hot zinc dip. (Also available in solid copper)

ACCESSORIES AND OTHER OPTIONS

- Wireguard
 - 26W, 32W & 42W Fluorescent 120V (ballast mounted inside the neck, globe option is required for outdoor use)
 - 35 to 100W High pressure sodium (remote ballast, globe option is required for outdoor use)
 - 50 to 150W Metal halide (remote ballast, globe option is required or use MP rated lamp for open fixture)
- NOTE: 42W CF & 150W MH option must use large globe

FINISHES

- 0=white, 1=black, 2=blue, 3=green, 4=dark bronze, 5=yellow, 6=red, 8=galvanized, 10=unfinish, 11=sa copper, 12=satin aluminum, 15=painted 20=sld copper & 21=sld brass



MUST BE INSTALLED BY A QUALIFIED ELECTRICIAN

ETL LISTED FOR WET LOCATION

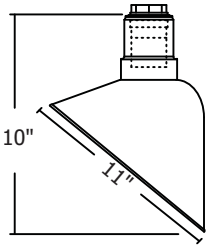
1435 West 139TH Street Gardena, CA 90249 Tel: 310-323-2275 Fax: 310-323-6275
 Website : www.arklighting.com Email : info@arklighting.com



L I G H T I N G

AA-11

11" ANGLE REFLECTOR 200W Max. INCANDESCENT



COVER NUT. Die cast aluminum with 1/2" N.P.T. or 3/4" N.P.T. accepts conduit pipe or cord strain relief.

SOCKET. Two-piece heavy duty ceramic medium base socket.

SHADE. Heavy gauge cold rolled steel and coated with genuine powder or electro plating. Galvanized finish is hot zinc dip.

| | | | |
|--|---|--|--|
| <p><u>Incandescent</u></p> <input type="checkbox"/> 200W | <p><u>Hub Size</u></p> <input type="checkbox"/> 1/2" <input type="checkbox"/> 3/4" | <p><u>Ball Aligner for stem mount</u> <u>Slope Ceiling 3/4" hub w/ 1/2" reducer</u></p> <input type="checkbox"/> ACN002 (Round) <input type="checkbox"/> ACN003 (Square) | <p><u>Colors & Finishes</u></p> <input type="checkbox"/> 0 White <input type="checkbox"/> 1 Black <input type="checkbox"/> 2 Blue <input type="checkbox"/> 3 Green <input type="checkbox"/> 4 Dark Bronze <input type="checkbox"/> 5 Yellow <input type="checkbox"/> 6 Red <input type="checkbox"/> 7 Yellow Zinc <input type="checkbox"/> 8 Galvanized <input type="checkbox"/> 10 Painted Chrome <input type="checkbox"/> 11 Satin Copper <input type="checkbox"/> 12 Satin Nickel <input type="checkbox"/> 15 Painted Copper <input type="checkbox"/> 20 Solid Copper <input type="checkbox"/> 21 Solid Brass <input type="checkbox"/> 22 Unfinished |
| <p><u>Intregal Ballast.</u> <u>Globe is required for wet location.</u></p> <input type="checkbox"/> 13CF-120 <input type="checkbox"/> 18CF-120 <input type="checkbox"/> 26CFT-120 <input type="checkbox"/> 32CFT-120 | <p><u>Mounting Options</u></p> <input type="checkbox"/> stem _____ " Length | <p><u>HD box cover for stem mount</u> <u>Flat Ceiling</u></p> <input type="checkbox"/> ACN009 (1/2) <input type="checkbox"/> ACN010 (3/4) | <p><u>Accessories</u></p> <p><u>Colored Cap</u></p> <input type="checkbox"/> ACC-002 <p><u>Wireguard</u></p> <input type="checkbox"/> AG111 |
| <p><u>Remote ballast.</u> <u>Globe is required for wet location.</u></p> <input type="checkbox"/> 26CFT-UNV <input type="checkbox"/> 32CFT-UNV <input type="checkbox"/> 42CFT-UNV | <p><u>Gooseneck w/ HD box wall plate</u></p> <input type="checkbox"/> AGB24-ELW <input type="checkbox"/> AGB101 <input type="checkbox"/> AGB101-48L <input type="checkbox"/> AGB102 <input type="checkbox"/> AGB103 <input type="checkbox"/> AGB104 <input type="checkbox"/> AGB105 <input type="checkbox"/> AGB106 <input type="checkbox"/> AGB110 <input type="checkbox"/> AGB111 <input type="checkbox"/> AGB110 <input type="checkbox"/> AGB111 <input type="checkbox"/> AGB141 <input type="checkbox"/> AGB1535 | <p><u>Globe & Guard</u></p> <input type="checkbox"/> AVX100DG Clear globe & guard <input type="checkbox"/> AVX100GL Clear globe <input type="checkbox"/> AVX100GLO Frost globe <input type="checkbox"/> AVX100PRIS Prismatic Globe | |
| <p><u>Remote ballast.</u> <u>Globe is required for wet location.</u></p> <input type="checkbox"/> 35W HPS <input type="checkbox"/> 50W HPS <input type="checkbox"/> 70W HPS <input type="checkbox"/> 100W HPS <input type="checkbox"/> 150W HPS | <p><u>Wall bracket w/ ballast box</u></p> <input type="checkbox"/> AGB204-WM | <p><u>Globe & Guard</u> <u>For 42W CFT & 150W HPS</u></p> <input type="checkbox"/> AVX200DG Clear globe & guard <input type="checkbox"/> AVX200GL Clear globe <input type="checkbox"/> AVX200GLO Frost globe <input type="checkbox"/> AVX200PRIS Prismatic Globe | |
| <p><u>Remote ballast.</u> <u>Globe is required for wet & dry location or open fixture with MP socket.</u></p> <input type="checkbox"/> 50W MH | <p><u>Wall bracket</u></p> <input type="checkbox"/> AWM-207 | <p><u>Remote box</u></p> <input type="checkbox"/> Indoor <input type="checkbox"/> Outdoor | |
| <p><u>Remote ballast.</u> <u>Open fixture only</u></p> <input type="checkbox"/> 70W MH <input type="checkbox"/> 100W MH <input type="checkbox"/> 150W MH | <p><u>Pole mount</u> <u>(specify slip fitter size)</u></p> <input type="checkbox"/> APB201 <input type="checkbox"/> APB202 <input type="checkbox"/> APB203 <input type="checkbox"/> APB204 <input type="checkbox"/> APB206 <input type="checkbox"/> APB207-2X <input type="checkbox"/> 2" slip fitter <input type="checkbox"/> 3" slip fitter | | |

JOBNAME: _____

SPECIFIER: _____





Barnett Architecture
 118 NORTH BREEZE TERRACE
 SUITE 1
 MADISON, WISCONSIN 53726
 608.233.4538
 barnettarchitecture.com

**NEW LOCATION FOR:
 BARRIQUES**

961 SOUTH PARK ST.
 967, SOUTH PARK ST.
 MADISON, WI 53715



**PRELIMINARY
 NOT FOR CONSTRUCTION**

**DRAWING ISSUE DATES
 2-22-2010**

P.2

This document contains confidential or proprietary information. No part of this document may be reproduced, stored in a retrieval system, or transmitted in any form or by any means, without the prior written consent of the architect.



VIEW FROM 967 SOUTH PARK STREET LOOKING NORTH



VIEW FROM PARK STREET LOOKING EAST



VIEW FROM 967 SOUTH PARK STREET LOOKING NORTHWEST



VIEW FROM PARR STREET LOOKING SOUTH



Barnett Architecture
 118 NORTH BREEZE TERRACE
 SUITE 1
 MADISON, WISCONSIN 53726
 608.233.4538
 barnettarchitecture.com

**NEW LOCATION FOR:
 BARRIQUES**

961 SOUTH PARK ST.
 967. SOUTH PARK ST.
 MADISON, WI 53715



**PRELIMINARY
 NOT FOR CONSTRUCTION**

**DRAWING ISSUE DATES
 2-22-2010**

P.1

This document contains confidential or proprietary information. No part of this document may be reproduced or transmitted in any form or by any means, except as authorized in writing.



VIEW FROM PARK STREET LOOKING NORTHEAST



VIEW FROM PARK STREET LOOKING NORTH



VIEW FROM PARK STREET LOOKING NORTH



VIEW FROM PARK STREET LOOKING NORTHEAST



Barnett Architecture
 118 NORTH BRESEE TERRACE
 SUITE 1
 MADISON, WISCONSIN 53726
 608.233.4538
 barnettarchitecture.com

NEW LOCATION FOR:
BARRIQUES

961 SOUTH PARK ST.
 967 SOUTH PARK ST.
 MADISON, WI 53715

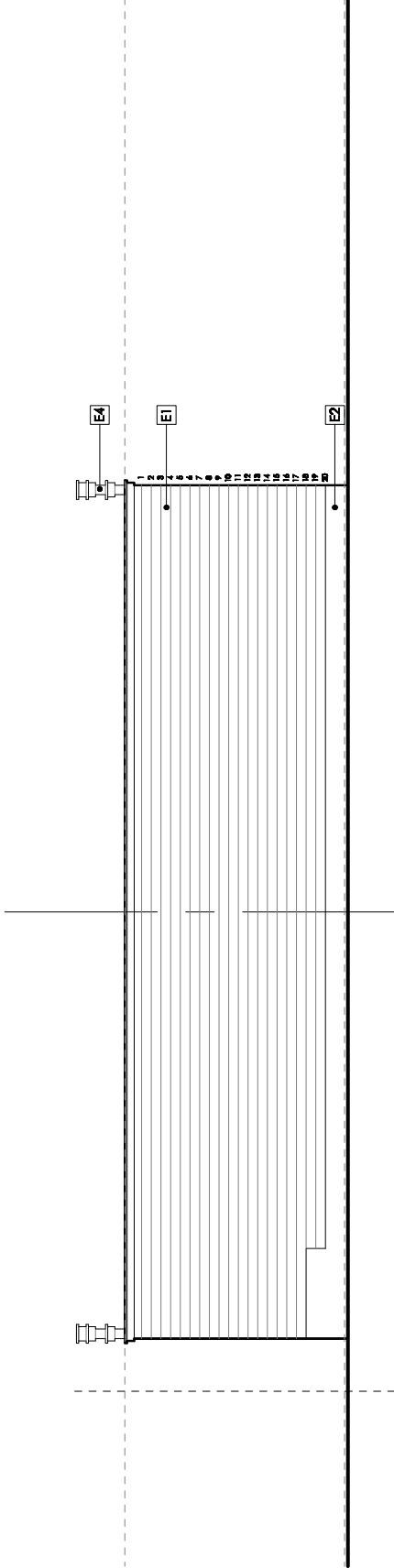


**PRELIMINARY
 NOT FOR CONSTRUCTION**

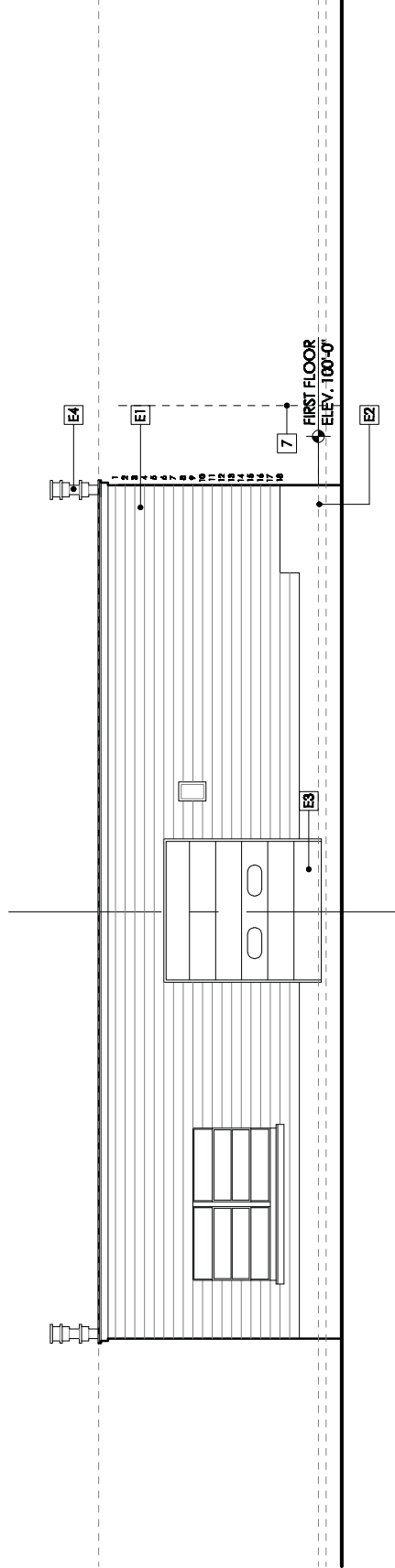
DRAWING ISSUE DATES
 2-22-2010

4.4

This document contains confidential or proprietary information. No part of this document may be reproduced or transmitted in any form or by any means, except as authorized.



1 SOUTH ELEVATION - exist.
 SCALE: 1/8"=1'-0"



2 NORTH ELEVATION - exist.
 SCALE: 1/8"=1'-0"



Barnett Architecture
 118 NORTH BRESEE TERRACE
 SUITE 1
 MADISON, WISCONSIN 53726
 608.233.4538
 barnettarchitecture.com

NEW LOCATION FOR:
BARRIQUES

961 SOUTH PARK ST.
 967 SOUTH PARK ST.
 MADISON, WI 53715

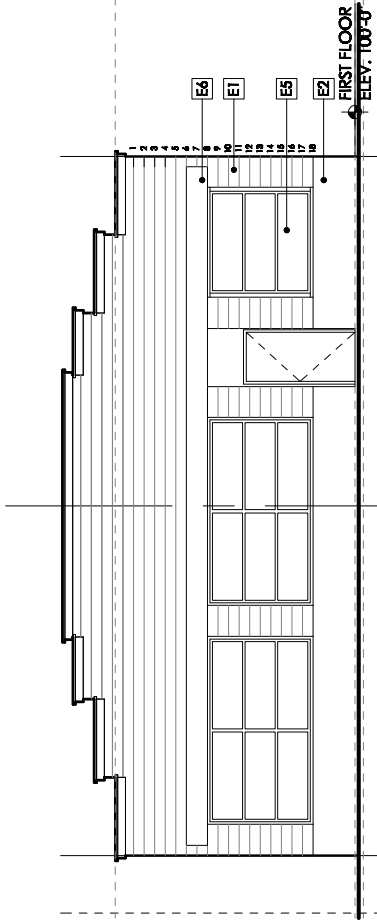


**PRELIMINARY
 NOT FOR CONSTRUCTION**

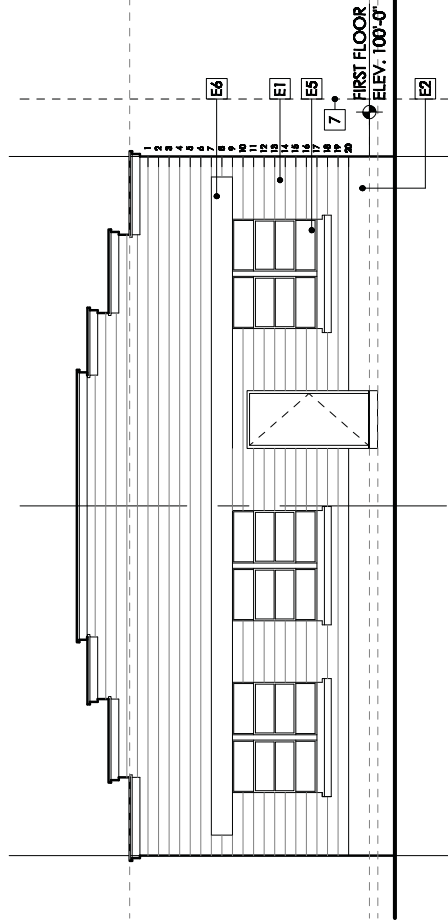
DRAWING ISSUE DATES
 2-22-2010

4.3

This document contains confidential or proprietary information. No part of this document may be reproduced or transmitted in any form or by any means, except as authorized.



1 WEST ELEVATION - exist.
 SCALE: 1/8" = 1'-0"



2 EAST ELEVATION - exist.
 SCALE: 1/8" = 1'-0"



Barnett Architecture
 118 NORTH BREEZE TERRACE
 SUITE 1
 MADISON, WISCONSIN 53726
 608.233.4538
 barnettarchitecture.com

NEW LOCATION FOR:
BARRIQUES

961 SOUTH PARK ST.
 967 SOUTH PARK ST.
 MADISON, WI 53715

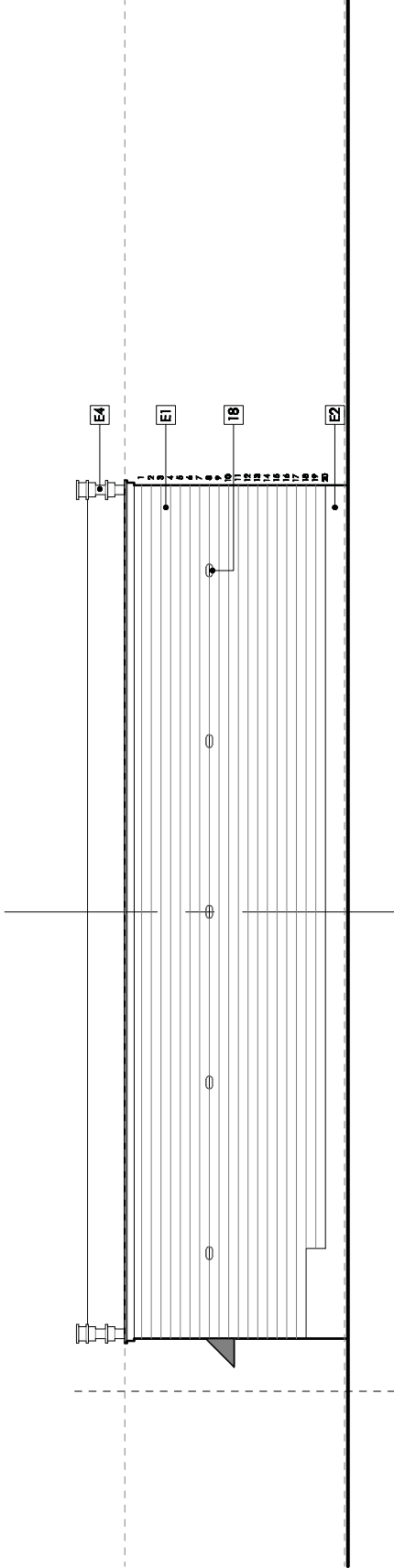


**PRELIMINARY
 NOT FOR CONSTRUCTION**

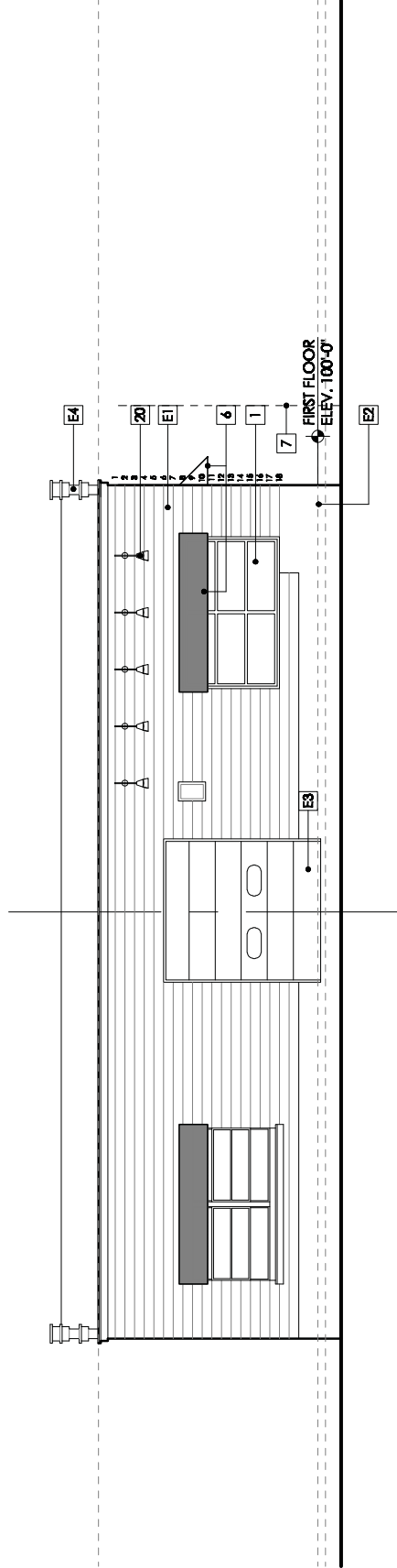
DRAWING ISSUE DATES
 2-22-2011

4.2

This document contains confidential or proprietary information. No part of this document may be reproduced or transmitted in any form or by any means, except as authorized.



1 SOUTH ELEVATION
 SCALE: 1/8" = 1'-0"



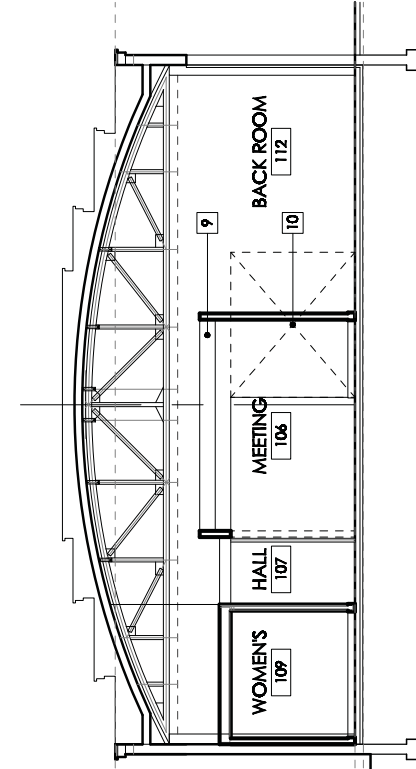
2 NORTH ELEVATION
 SCALE: 1/8" = 1'-0"



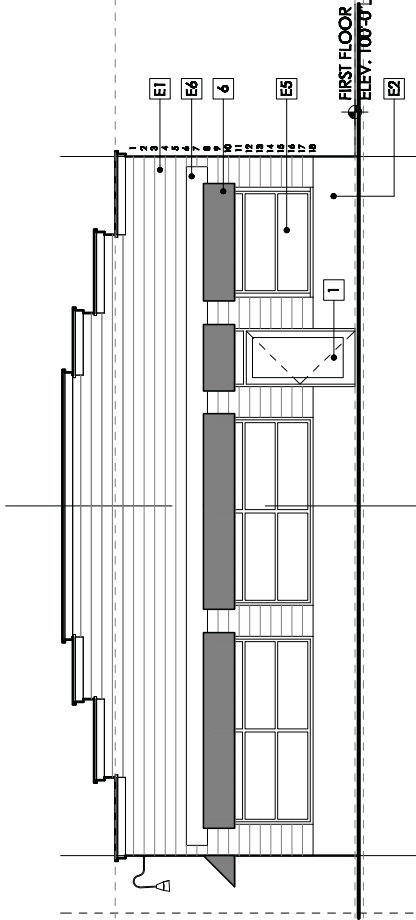
Barnett Architecture
 118 NORTH BREEZE TERRACE
 SUITE 1
 MADISON, WISCONSIN 53726
 608.233.4538
 barnettarchitecture.com

NEW LOCATION FOR:
BARRIQUES

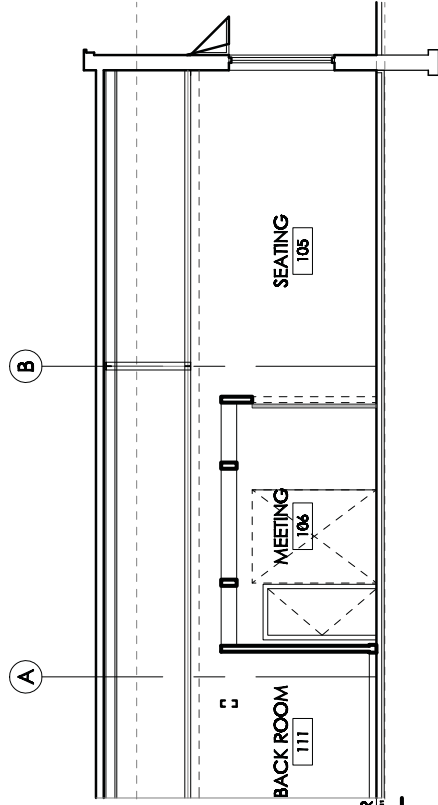
961 SOUTH PARK ST.
 967 SOUTH PARK ST.
 MADISON, WI 53715



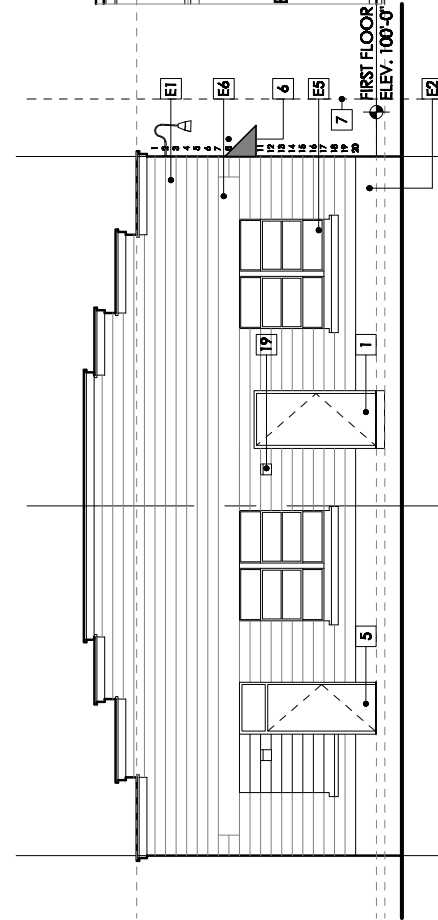
3 SECTION LOOKING WEST
 SCALE 1/8"=1'-0"



1 WEST ELEVATION
 SCALE 1/8"=1'-0"



4 SECTION LOOKING SOUTH
 SCALE 1/8"=1'-0"



2 EAST ELEVATION
 SCALE 1/8"=1'-0"



PRELIMINARY
 NOT FOR CONSTRUCTION

DRAWING ISSUE DATES
 2-22-2011

4.1

This document contains confidential or proprietary information. It is to be used only for the project or projects named herein. It is not to be distributed or copied without the written consent of Barnett Architecture.



Barnett Architecture
 118 NORTH BREEZE TERRACE
 SUITE 1
 MADISON, WISCONSIN 53726
 608.233.4538
 barnettarchitecture.com

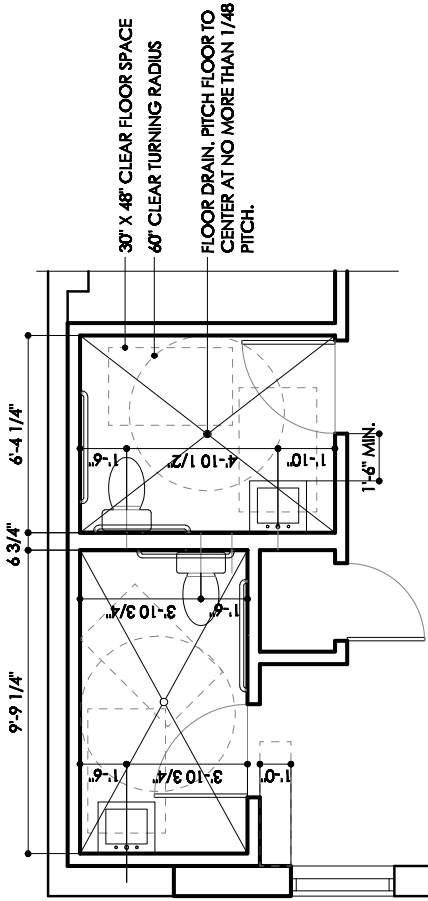
NEW LOCATION FOR:
BARRIQUES

961 SOUTH PARK ST.
 967 SOUTH PARK ST.
 MADISON, WI 53715

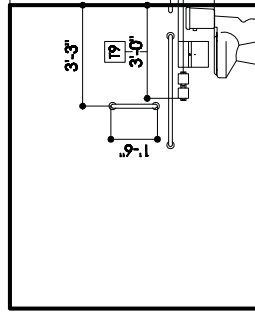


ADA DIMENSION NOTES

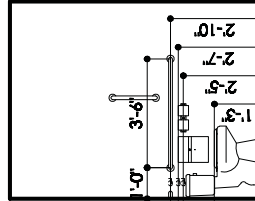
- T1. TO TOP OF SEAT.
- T2. TO CENTER OF TOILET PAPER DISPENSER.
- T3. TO TOP OF SANITARY NAPKIN DISPOSAL.
- T4. TO CENTER OF GRAB BAR.
- T5. TO BOTTOM OF MIRROR REFLECTIVE SURFACE.
- T6. TO TOP OF SINK EDGE.
- T7. CLEAR DIMENSION, MINIMUM.
- T8. TO CENTER OF SOAP DISPENSER CONTROL, MAX.
- T9. TO EDGE OF TOILET PAPER DISPENSER, MAX.



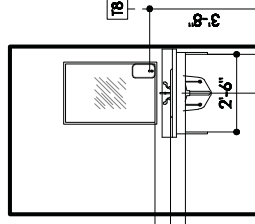
1 ENLARGED TOILET ROOM PLAN
 SCALE: 1/4"=1'-0"



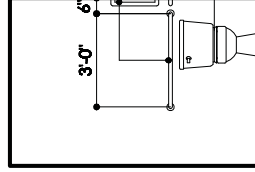
2 ELEVATION
 SCALE: 1/4"=1'-0"



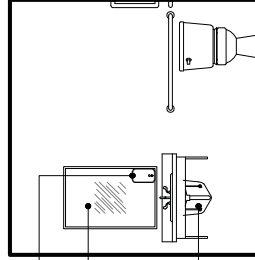
3 ELEVATION
 SCALE: 1/4"=1'-0"



4 ELEVATION
 SCALE: 1/4"=1'-0"

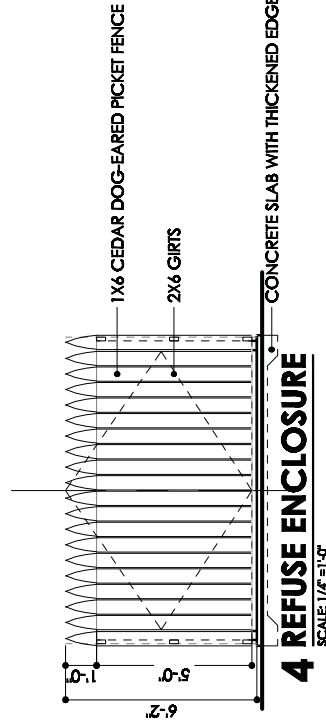


5 ELEVATION
 SCALE: 1/4"=1'-0"



6 ADA SIGNAGE
 SCALE: 1/4"=1'-0"

WHERE PERMANENT IDENTIFICATION IS PROVIDED FOR ROOMS AND SPACES, SIGNS SHALL BE INSTALLED IN THE WALL ADJACENT TO THE LATCH SIDE OF THE DOOR. WHERE THERE IS NO WALL SPACE TO THE LATCH SIDE OF THE DOOR, INCLUDING AT DOUBLE LEAF DOORS, SIGNS SHALL BE PLACED ON THE NEAREST ADJACENT WALL. MOUNTING HEIGHT SHALL BE 60" ABOVE FINISH FLOOR TO THE CENTERLINE OF THE SIGN. MOUNTING LOCATION FOR SUCH SIGNAGE SHALL BE SO THAT A PERSON MAY APPROACH TO WITHIN 3" OF SIGNAGE WITHOUT ENCOUNTERING PROTRUDING OBJECTS OR STANDING WITHIN THE SWING OF THE DOOR.



4 REFUSE ENCLOSURE
 SCALE: 1/4"=1'-0"

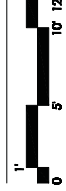


PRELIMINARY
 NOT FOR CONSTRUCTION

DRAWING ISSUE DATES
 2-22-2011

3.4

This document contains confidential or proprietary information. It is to be used only for the project and site indicated on the title block and is not to be distributed or re-used without the express written consent of Barnett Architecture.



PRELIMINARY
NOT FOR CONSTRUCTION
DRAWING ISSUE DATES
2-22-2011

3.3

This document contains confidential information. It is the property of Barnett Architecture, Inc. and is not to be distributed outside the firm without the express written consent of Barnett Architecture, Inc.

ROOM FINISH SCHEDULE

| NO. | NAME | WALL | | | | | CEILING | | | | | NOTES | NO. |
|-----|-----------|--------|------|-------|-------|-------|---------|-------|--------|---|-----|-------|-----|
| | | FLOOR | BASE | N | S | E | W | TYPE | HT. | | | | |
| 101 | ENTRY | CONC-1 | B-1 | - | CMUP | CMUP | - | EX-P | VARIES | 1 | 101 | | |
| 102 | PREP | CONC-1 | B-1 | GWB-P | GWB-P | GWB-P | - | EX-P | VARIES | 1 | 102 | | |
| 103 | PREP | CONC-1 | B-1 | - | GWB-P | - | - | EX-P | VARIES | 1 | 103 | | |
| 104 | EQUIPMENT | CONC-1 | B-1 | GWB-P | GWB-P | GWB-P | - | EX-P | VARIES | 1 | 104 | | |
| 105 | SEATING | CONC-1 | B-1 | CMUP | - | CMUP | GWB-P | EX-P | VARIES | 1 | 105 | | |
| 106 | MEETING | CONC-1 | B-1 | GWB-P | GWB-P | GWB-P | - | EX-P | VARIES | 1 | 106 | | |
| 107 | HALL | CONC-1 | B-1 | GWB-P | GWB-P | - | - | EX-P | VARIES | 1 | 107 | | |
| 108 | HALL | CONC-1 | B-1 | GWB-P | GWB-P | CMUP | - | EX-P | VARIES | 1 | 108 | | |
| 109 | WOMEN'S | CONC-1 | B-1 | GWB-P | GWB-P | GWB-P | GWB-P | 8'-0" | VARIES | 1 | 109 | | |
| 110 | MEN'S | CONC-1 | B-1 | GWB-P | GWB-P | GWB-P | GWB-P | 8'-0" | VARIES | 1 | 110 | | |
| 111 | BACK ROOM | CONC-1 | B-1 | CMUP | GWB-P | CMUP | GWB-P | EX-P | VARIES | 1 | 111 | | |
| 112 | BACK ROOM | CONC-1 | B-1 | CMUP | GWB-P | - | GWB-P | EX-P | VARIES | 1 | 112 | | |

DOOR SCHEDULE

| TAG | W | H | T | TYPE | MAT. | GLASS | LOUVER | UCUT | HW | LBL. | MAT. | HEAD | JAMB | SILL | NOTES | TAG |
|------|----------|----|-------|------|------|-------|--------|------|----|------|------|------|------|------|-------|-----|
| | | | | | | | | | | | | | | | | |
| 101 | 41 | 84 | 1 3/4 | ALUM | | | | | | | ALUM | | | | 3,4 | |
| 106A | 36 | 84 | 1 3/4 | SCW | | | | | | | WD. | | | | | |
| 106B | 72 | 84 | 1 3/4 | - | SCW | - | - | - | - | - | WD. | - | - | - | 2 | |
| 106C | 111 | 84 | 1 3/4 | - | SCW | - | - | - | - | - | WD. | - | - | - | 2 | |
| 107A | 30 | 84 | 1 3/4 | SCW | | | | H2 | | | WD. | | | | | |
| 108 | 36 | 84 | 1 3/4 | HM | | | | | | | HM | | | | | |
| 109 | 36 | 84 | 1 3/4 | SCW | | | | H1 | | | WD. | | | | | |
| 110 | 36 | 84 | 1 3/4 | SCW | | | | H1 | | | WD. | | | | | |
| 111A | 34 | 84 | 1 3/4 | SCW | | | | | | | WD. | | | | 5 | |
| 111B | 40 | 91 | 1 3/4 | HM | | | | | | | HM | | | | 1 | |
| 112 | EXISTING | | | | | | | | | | | | | | | |

WINDOW SCHEDULE

| TAG | STYLE | MANUF | MODEL | FRAME SIZE | ROUGH OPENING | NOTES | TAG |
|-----|-----------------|--------|----------|--------------------|--------------------|-------|-----|
| A | AWNING | MARVIN | CAWN4024 | 3'-4" X 1'-11 1/8" | 3'-5" X 1'-11 5/8" | 1 | |
| ex | EXISTING WINDOW | | | | | 1 | ex |

ROOM FINISH SCHEDULE KEYED NOTES
1. CMU IS EXISTING EXCEPT AT INFILL AT DOOR 108 AND WINDOW A AREAS OF CONSTRUCTION.

DOOR SCHEDULE KEYED NOTES
1. CMU IS EXISTING EXCEPT AT INFILL AT DOOR 108 AND WINDOW A AREAS OF CONSTRUCTION.

2. BARN DOOR ON TRACK.
3. VERIFY SIZE WITH EXISTING OPENING.
4. DOOR WITH INTEGRAL ALUMINUM FRAMED TRANSOM.
5. FULL HEIGHT DOOR TO MATCH OR, AT OWNER OPTION, MINIMUM 84" TALL DOOR WITH BRAKE-METAL OR AZEK TRIM INFILL ABOVE DOOR HEAD. DOOR WIDTH TO SUIT EXISTING OPENING. VERIFY DIMENSION IN FIELD.
H1. PRIVACY LOCKSET
H2. KEYED LOCKSET.

WINDOW SCHEDULE KEYED NOTES
1. MATCH WINDOW PATTERN, MATERIALS AND DETAILS ALONG PARK STREET.

GENERAL NOTES FOR PROJECT
1. VERIFY EXISTING DIMENSIONS IN FIELD PRIOR TO CONSTRUCTION.
2. EXTERIOR DIMENSIONS ARE FROM OUTSIDE FACE OF SHEATHING/FACE OF FOUNDATION WALL.
3. INTERIOR DIMENSIONS ARE FROM FACE OF FINISH MATERIAL.
4. REPAIR AND MATCH EXISTING FINISHES.
5. SEE 3.3 FOR FINISH NOTES.
6. PROPOSED MECHANICAL, ELECTRICAL AND PLUMBING DEVICES AND EQUIPMENT ARE CONCEPTUAL ONLY AND ARE THE RESPONSIBILITY OF THE MEP CONTRACTORS.

EXISTING KEYED NOTES
E1. EXISTING CMU.
E2. EXISTING POURED CONCRETE WALL BASE.
E3. EXISTING OVERHEAD DOOR.
E4. EXISTING PARAPET.
E5. EXISTING WINDOW.
E6. EXISTING POURED CONCRETE LINTEL.

PROPOSED PLAN AND ELEVATION KEYED NOTES
1. REMOVE DOOR, FRAME AND ASSOCIATED CONSTRUCTION AND REPLACE WITH NEW DOOR AND TRANSOM WINDOW.
2. REMOVE SECTION OF EXISTING WALL WHERE WALL INFILL IS CLEAR FOR INSTALLATION OF NEW WINDOW TO MATCH ADJACENT.
3. MAINTAIN 12" X 48" CLEAR SPACE AT FULL SIDE OF DOOR.
4. SHADED AREA INDICATES VOLUME ABOVE EQUIPMENT 104, WOMEN'S 109 AND MENS. 110.
5. REMOVE EXISTING WINDOW AND SECTION OF CMU AS REQUIRED TO INSTALL PROPOSED DOOR ASSEMBLY AND INFILL CMU SECTION.
6. OUTLINE OF PROPOSED AWNING.
7. APPROXIMATE LINE OF PROPERTY LINE.
8. ADJUST THIS DIMENSION AS REQUIRED PER FIELD CONDITIONS, AS REQUIRED. HOLD OTHER DIMENSIONS.
9. WOOD CROSS WALL CROSS-BRACING POSITION.
10. DOTTED OUTLINE OF BARN DOOR IN OPEN POSITION.

11. PROPOSED ELECTRICAL PANEL.
12. PROPOSED WATER SERVICE AND METER.
13. PROPOSED FURNACE.
14. PROPOSED MOP SINK.
15. PROPOSED HAND WASH SINK.
16. PROPOSED WATER HEATER.
17. PROPOSED WATER SOFTENER TANK.
18. LIGHT FIXTURE TYPE "A". 5 COUNT AT SOUTH WALL.
19. CUT-OFF SECURITY LIGHT FIXTURE TYPE "B". 2 COUNT AT EAST WALL.
20. GOOSE NECK LIGHT FIXTURE TYPE "C". 5 COUNT ON NORTH-PARR STREET.

PRELIMINARY
NOT FOR CONSTRUCTION

FT-1 CONCRETE SLAB - BY OWNER
4" WELDED WIRE FABRIC REINFORCED
CONCRETE SLAB
VAPOR BARRIER
2" RIGID INSULATION
GRANULAR FILL BASE COURSE
Z STRIP CONTROL JOINTS
2" RIGID INSULATION THERMAL BREAK AT
SLAB-WALL

ROOF TYPES

RT-1 SHED ROOF - EXISTING
RUBBER ROOF MEMBRANE
RIGID INSULATION
SHEATHING
STEEL OPEN-WEB PURLINS
STEEL ROW-STRING TRUSSES
EDGE GUTTERS TO INTERIOR ROOF DRAINS

EXISTING WALL TYPES

WT-E1 EXTERIOR WALL - EXISTING
EXISTING CMU - VERIFY THICKNESS IN FIELD

EXTERIOR WALL TYPES

WT-E1 EXTERIOR WALL OPTION 1
EXISTING CMU - VERIFY THICKNESS IN FIELD
2" RIGID INSULATION TAPED AND CAULKED
2X4 FRAMING LAYED FLAT AT 16" O.C.
5/8" PAPERLESS GWB

INTERIOR WALL TYPES

WT-I1 INTERIOR WALL - PROPOSED
2X4 FRAMING AT 16" O.C.
5/8" GWB EACH FACE

WT-I2 INTERIOR WALL - PROPOSED
2X6 FRAMING AT 16" O.C.
5/8" GWB EACH FACE

WT-I3 INTERIOR WALL - PROPOSED
2X4 FRAMING AT 16" O.C.
5/8" GWB EACH FACE
LOW VOC FG SOUND ATTENUATION INSUL.

WT-I4 INTERIOR WALL - PROPOSED
2X6 FRAMING AT 16" O.C.
5/8" GWB EACH FACE
LOW VOC FG SOUND ATTENUATION INSUL.

WALL AND ROOF TYPE NOTES

1. PROVIDE CEMENT BOARD BEHIND BATH/SHOWER AND SHOWER WALLS IN LIEU OF GWB.
2. PROVIDE SOUND ATTENUATION BATTS IN PROPOSED BEDROOM AND BATHROOM WALLS.
3. COORDINATE TO OFF FLOOR FRAMING ELEVATION WITH PROPOSED FINISH FLOOR FOR LEVEL CONDITIONS.

FINISH FLOOR NOTES

1. SEE SPECIFICATIONS FOR FINISH FLOORING NOTES.



Barnett Architecture
118 NORTH BRESEE TERRACE
SUITE 1
MADISON, WISCONSIN 53726
608.233.4538
barnettarchitecture.com

NEW LOCATION FOR:
BARRIQUES

961 SOUTH PARK ST.
967. SOUTH PARK ST.
MADISON, WI 53715



PRELIMINARY
NOT FOR CONSTRUCTION

DRAWING ISSUE DATES
2-22-2011

3.2

This document contains confidential or proprietary information. No part of this document may be reproduced or transmitted in any form or by any means, electronic or mechanical, including photocopying and recording, or by any information storage or retrieval system, without the prior written permission of Barnett Architecture.

PRELIMINARY
NOT FOR CONSTRUCTION



Barnett Architecture
 118 NORTH BREEZE TERRACE
 SUITE 1
 MADISON, WISCONSIN 53726
 608.233.4538
 barnettarchitecture.com

NEW LOCATION FOR:
BARRIQUES

961 SOUTH PARK ST.
 967. SOUTH PARK ST.
 MADISON, WI 53715

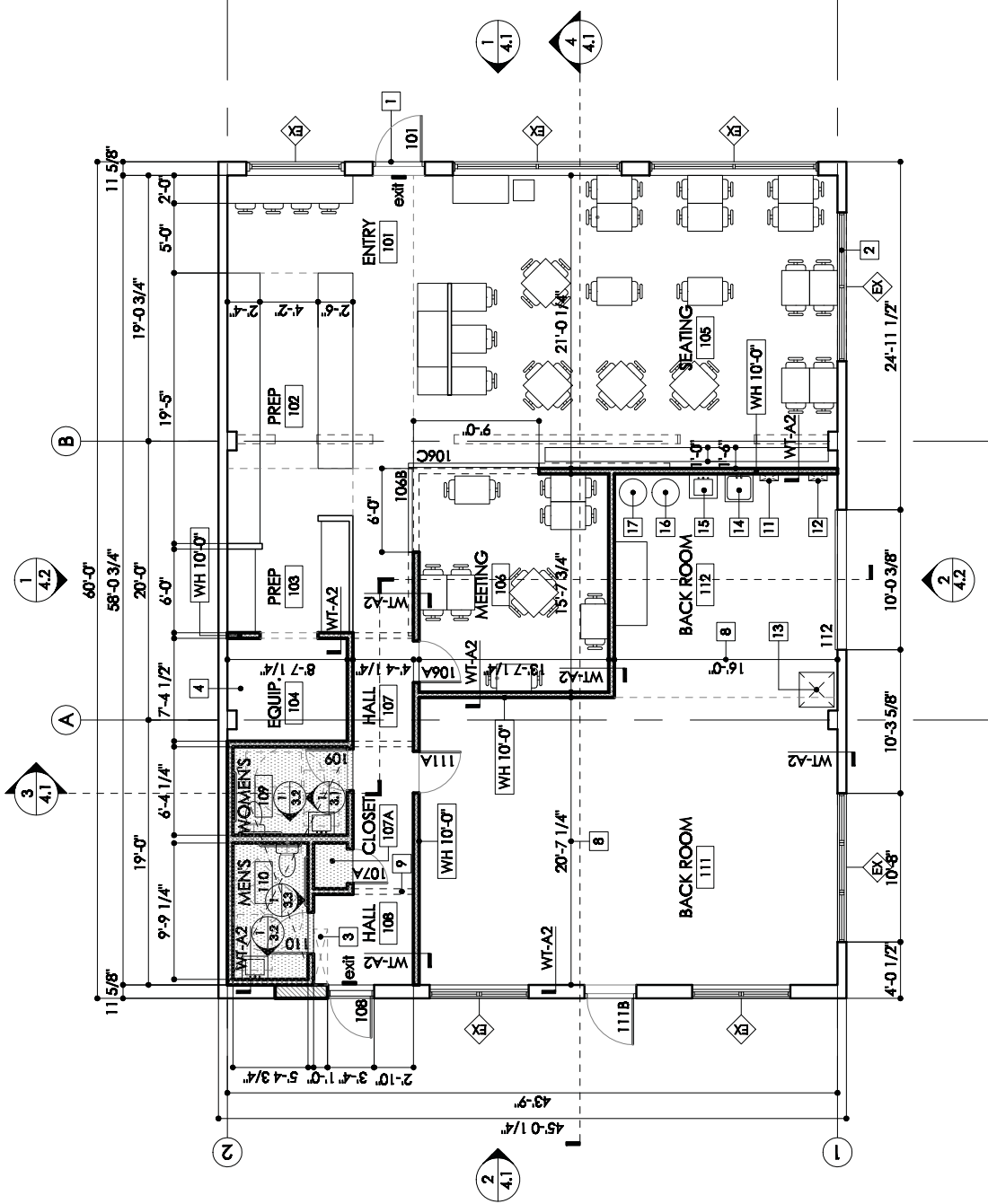


PRELIMINARY
 NOT FOR CONSTRUCTION

DRAWING ISSUE DATES
 2-22-2011

3.1

This document contains confidential or proprietary information. No part of this document may be reproduced or transmitted in any form or by any means, except as authorized.



- LEGEND**
- EXISTING WALL TO REMAIN
 - EXISTING CONSTRUCTION TO BE REMOVED
 - ▨ PROPOSED FRAME WALL CONSTRUCTION
 - ▩ PROPOSED CMU WALL CONSTRUCTION

1 FIRST FLOOR
 SCALE: 1/8" = 1'-0"



Barnett Architecture
 18 NORTH BRESEE TERRACE
 SUITE 1
 MADISON, WISCONSIN 53726
 608.233.4538
 barnettarchitecture.com

**NEW LOCATION FOR:
 BARRIQUES**

961 SOUTH PARK ST.
 967 SOUTH PARK ST.
 MADISON, WI 53715





**LANDSCAPE ARCHITECT:
 RICHARD SLAYTON, ASLA**

**PRELIMINARY
 NOT FOR CONSTRUCTION**
 DRAWING ISSUE DATES
 2-22-2011

2.5

This document contains confidential information. It is intended for the use of the client and is not to be distributed to any other party without the written consent of the architect.

PLANT SCHEDULE AND LEGEND

| Key | Botanical Name | Common Name | Qty | Planting Size | Root Spec | Spacing | Comments |
|---|---|--------------------------------|-----|---------------|-----------|----------|---------------------------------|
| Major Deciduous Trees | | | | | | | |
| BN | Betula nigra 'Heritage' | Heritage River Birch | 2 | 2-2 1/2" cal | B&B | As shown | multi-stem |
| AR | Acer rubrum 'Red Sunset' | Red Sunset Maple | 1 | 2-2 1/2" cal | B&B | As shown | Straight leader |
| Minor Deciduous Trees | | | | | | | |
| AG | Amelanchier grandiflora 'Autumn Brilliance' | Autumn Brilliance Serviceberry | 2 | 6' HT min | B&B | As shown | Multi-stem, matched full plants |
| Evergreens | | | | | | | |
| BM | Buxus microphylla 'Wintergreen' | Wintergreen Boxwood | 3 | 18" HT min | B&B | As shown | Full plants, matched |
| JS | Juniperus sabina 'Buffalo' | Buffalo Savin Juniper | 3 | 18" HT min | B&B | As shown | Full plants, matched |
| JM | Juniperus x media 'Saybrook Gold' | Saybrook Gold Juniper | 3 | 3' HT min | B&B | As shown | Full plants, matched |
| Deciduous Shrubs | | | | | | | |
| CS | Cornus sericea 'Kelsey' | Kelsey Redtwig Dogwood | 3 | 3" HT min | CONT | As shown | Full, matched plants |
| VO | Viburnum opulus 'Compactum' | Compact Euro Cranberrybush | 4 | 3" HT min | CONT | As shown | Full, matched plants |
| Perennials, Grasses and Groundcovers | | | | | | | |
| hm | heuchera micrantha 'Palace Purple' | Palace Purple Coral Bells | 12 | 1 GAL | CONT | 18" o.c. | Vigorous plants |
| ep | Echinacea purpurea | Purple Coneflower | 14 | 3 Gal | CONT | 18" o.c. | Vigorous plants |
| ms | Miscanthus sinensis 'Gracillimus' | Gracillimus Maiden Grass | 6 | 3 GAL | CONT | As shown | Full, matched plants |
| pv | Panicum virgatum 'Shenandoah' | Shenandoah Switchgrass | 12 | 1 GAL | CONT | 18" o.c. | Full, matched plants |
| <div style="display: flex; justify-content: space-between; align-items: center;"> <div style="text-align: center;">  Stone Mulch </div> <div style="text-align: center;">  Shredded Bark Mulch: all planting areas shall receive bark mulch </div> </div> | | | | | | | |

961-967 S PARK STREET
PLANT SCHEDULE AND LEGEND
 SHEET: FEBRUARY 21, 2011
 DATED: FEBRUARY 21, 2011



Barnett Architecture
 118 NORTH BREESE TERRACE
 SUITE 1
 MADISON, WISCONSIN 53726
 608.233.4538
 barnettarchitecture.com

**NEW LOCATION FOR:
 BARRIQUES**

**961 SOUTH PARK ST.
 967 SOUTH PARK ST.
 MADISON, WI 53715**



**LANDSCAPE ARCHITECT:
 RICHARD SLAYTON, ASU**

**PRELIMINARY
 NOT FOR CONSTRUCTION**

**DRAWING ISSUE DATES
 2-22-2011**

2.4

This drawing contains confidential or proprietary information. No part of this drawing may be reproduced or transmitted in any form or by any means, electronic or mechanical, including photocopying, recording, or by any information storage and retrieval system, without the prior written consent of the architect.

LANDSCAPE WORKSHEET

Number of Trees Required
 This worksheet is a summary of trees on the number of plants shown. Using the formula for "Average" Trees on the reverse side of this worksheet, determine the number of trees required. Example: One tree is required for 10 parking stalls.

Number of Parking Stalls: TOTAL:
 Total Square Footage of the Single Area:
 Divided by Total Paved Area (2000 Sq. Ft. = 1 "Average" Tree)
 Number of Cars per Hour (See Exhibit 2 - 3 "10' Capacity")
 (See Exhibit 3 for Average Rate)

Number of Landscaping Plants Required
 The number of plants required is an estimate based on the number of parking stalls. Using the formula for "Landscaping Plants" on the reverse side of this worksheet, determine the number of plants required. Example: One plant is required for 10 parking stalls.
 (See Exhibit 4 for Average Rate)

Number of Plants Required: TOTAL:
 Number of Plants Required (See Exhibit 4 for Average Rate)

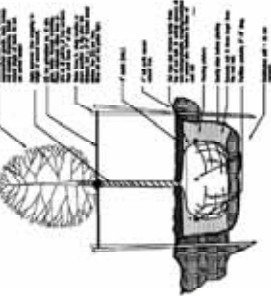
Calculations of Plants and Costs
 This worksheet is a summary of the number and cost of plants required for the site. Use the formula for "Plants and Costs" on the reverse side of this worksheet to determine the total cost of plants required.

| Plants | Quantity | Plant Name | Plant Size | Plant Cost | Total Cost |
|--------------------------|----------|-------------|------------|------------|------------|
| Example Tree 2" - 3" | 10 | 2" - 3" | 20 | 200 | 200 |
| Example Tree 4" - 6" | 5 | 4" - 6" | 15 | 75 | 75 |
| Example Tree 8" - 12" | 5 | 8" - 12" | 15 | 75 | 75 |
| Example Tree 18" - 24" | 5 | 18" - 24" | 30 | 150 | 150 |
| Example Tree 24" - 36" | 5 | 24" - 36" | 30 | 150 | 150 |
| Example Tree 36" - 48" | 5 | 36" - 48" | 30 | 150 | 150 |
| Example Tree 48" - 60" | 5 | 48" - 60" | 30 | 150 | 150 |
| Example Tree 60" - 72" | 5 | 60" - 72" | 30 | 150 | 150 |
| Example Tree 72" - 84" | 5 | 72" - 84" | 30 | 150 | 150 |
| Example Tree 84" - 96" | 5 | 84" - 96" | 30 | 150 | 150 |
| Example Tree 96" - 108" | 5 | 96" - 108" | 30 | 150 | 150 |
| Example Tree 108" - 120" | 5 | 108" - 120" | 30 | 150 | 150 |
| TOTAL | | | | | 141 |

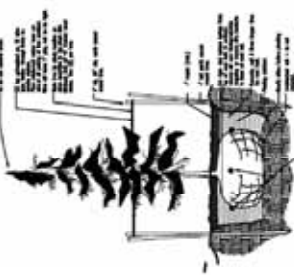
Number of Plants Required: TOTAL:
 Total Cost of Plants Required:
 (See Exhibit 5 for Average Rate)

Approved by: _____ Date: _____

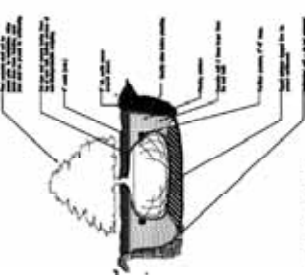
**961 - 967 S PARK STREET
 PLANTING PLAN AND DETAILS
 SHEET: FEBRUARY 21, 2011**



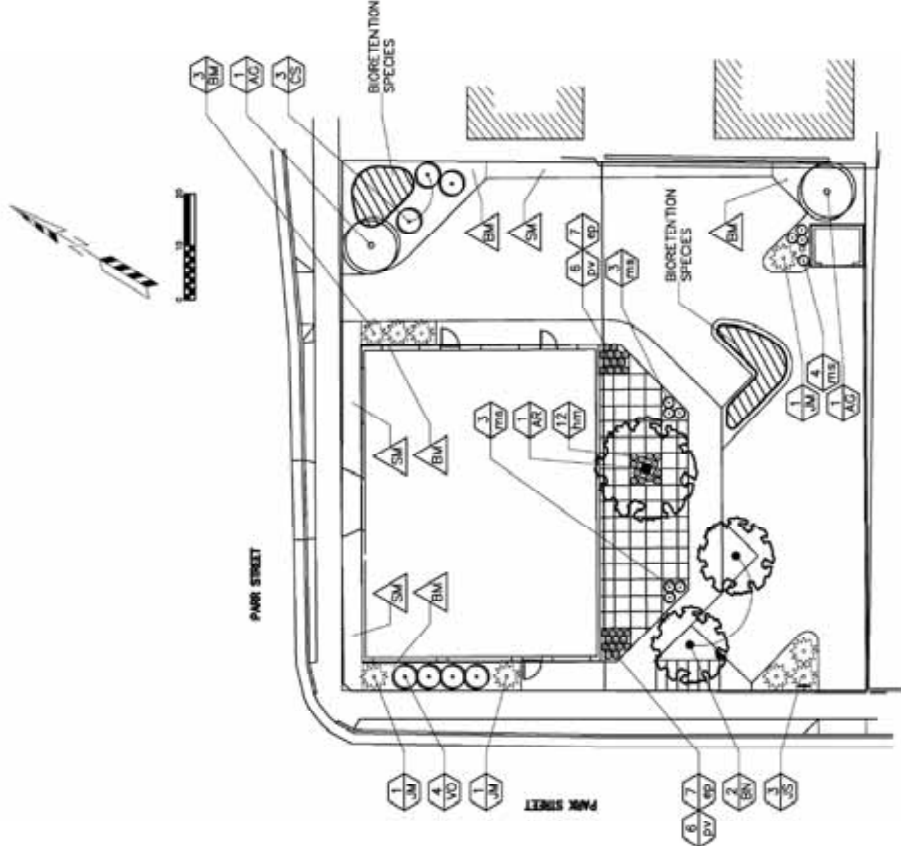
1 SMALL TREE PLANTING (UP TO 3'-1/2" DIA.)
 Scale: 1/8" = 1'-0"



2 EMBEDDED TREE PLANTING
 Scale: 1/8" = 1'-0"



3 SMALL PLANTING
 Scale: 1/8" = 1'-0"



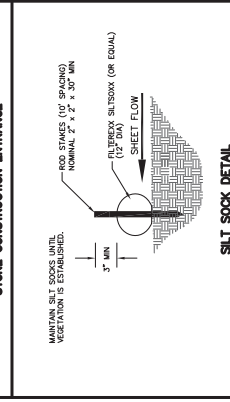
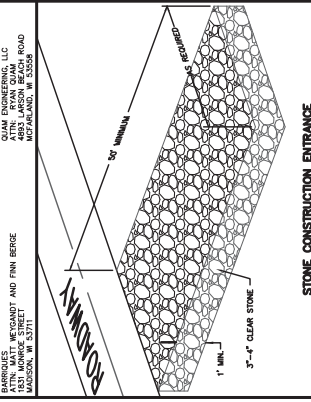
1 PLANTING PLAN

EROSION NOTES:
 THE STONE CONSTRUCTION ENTRANCE SHALL BE INSTALLED PRIOR TO ANY CONSTRUCTION. THE EROSION CONTROL MEASURES AND SPECIFICATIONS SHALL BE INSTALLED WITHIN 30 DAYS OF THE TRACK OF ROAD OR MAY BE PERMITTED TO BE INSTALLED AT A LATER DATE. THE TRACK OF ROAD SHALL BE REMOVED BY STREET CLEANING (NOT HYDRAULIC).
 THE EROSION CONTROL MEASURES AND SPECIFICATIONS SHALL BE MAINTAINED THROUGHOUT CONSTRUCTION AND SHALL BE MAINTAINED FOR MAXIMUM EFFECTIVENESS UNTIL VEGETATION IS ESTABLISHED. ALL EROSION CONTROL MEASURES SHALL BE MAINTAINED FOR A PERIOD OF 24 HOURS AFTER THE WEATHER HAS BEEN CLEAR FOR 24 HOURS. ALL MAINTENANCE WILL FOLLOW AN CUT AND FILL SCHEDULE SHALL BE NO GREATER THAN 3".

RESTORATION NOTES:
 ALL RESTORATION AREAS SHALL RECEIVE A MINIMUM OF FOUR (4) INCHES OF TOPSOIL. THE TOPSOIL SHALL BE APPLIED TO THE RESTORATION AREAS AT THE RATE OF 2 TONS PER ACRE. SEED MATTERS SHALL BE APPLIED AT THE RATE OF FOUR (4) POUNDS PER 1000 SQUARE FEET. SEED MATTERS SHALL BE APPLIED AT THE RATE OF 10 TONS PER ACRE. ALL RESTORATION AREAS SHALL BE WATERED REGULARLY THROUGHOUT CONSTRUCTION AND SHALL BE WATERED REGULARLY THROUGHOUT RESTORATION. RESTORATION SHALL BE COMPLETED WITHIN 30 DAYS OF THE DATE OF CONSTRUCTION ACTIVITIES. ADDITIONAL RESTORATION SHALL BE ADDED TO THE PLAN.

TIME SCHEDULE:
 APRIL 18, 2011
 APRIL 19 - MAY 31, 2011
 CONTRACT PAVING, PAVING LOT AND DRIVEWAY
 CONSTRUCTION OF BIOMATERS AND BERM
 CONSTRUCTION OF BIOMATERS AND BERM
 CONSTRUCTION OF BIOMATERS AND BERM

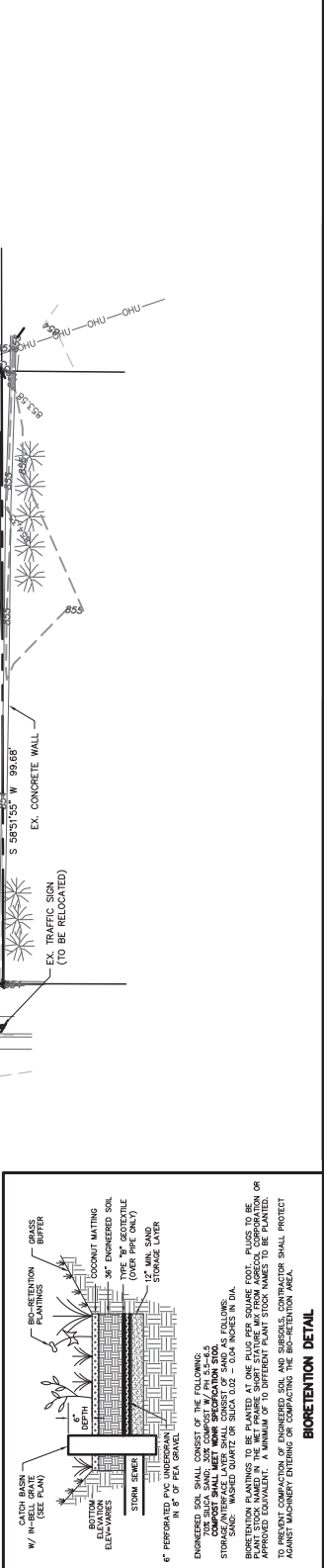
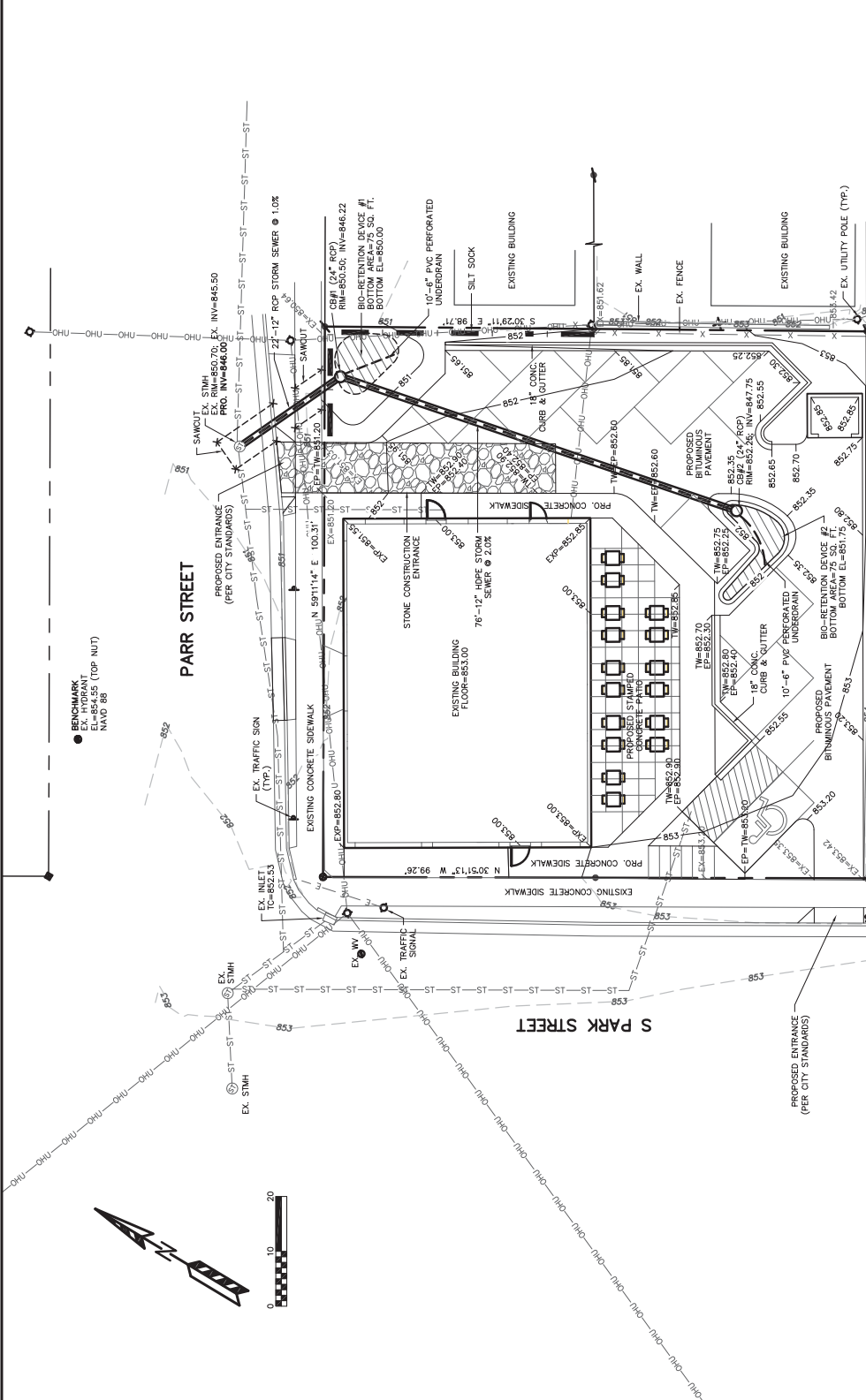
QUAM ENGINEERING, LLC
 4515 NORTH MERRIMANT AND FERN BERSE
 ATRN. PLYMOUTH WISCONSIN, WI 53084
 MADISON, WI 53711
 WWW.QUAMENGINEERING.COM
 4604 SIGELKOW ROAD, SUITE A - McFARLAND, WI 53558
 PHONE (608) 838-7750

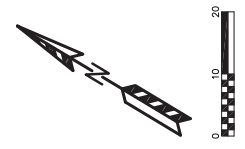
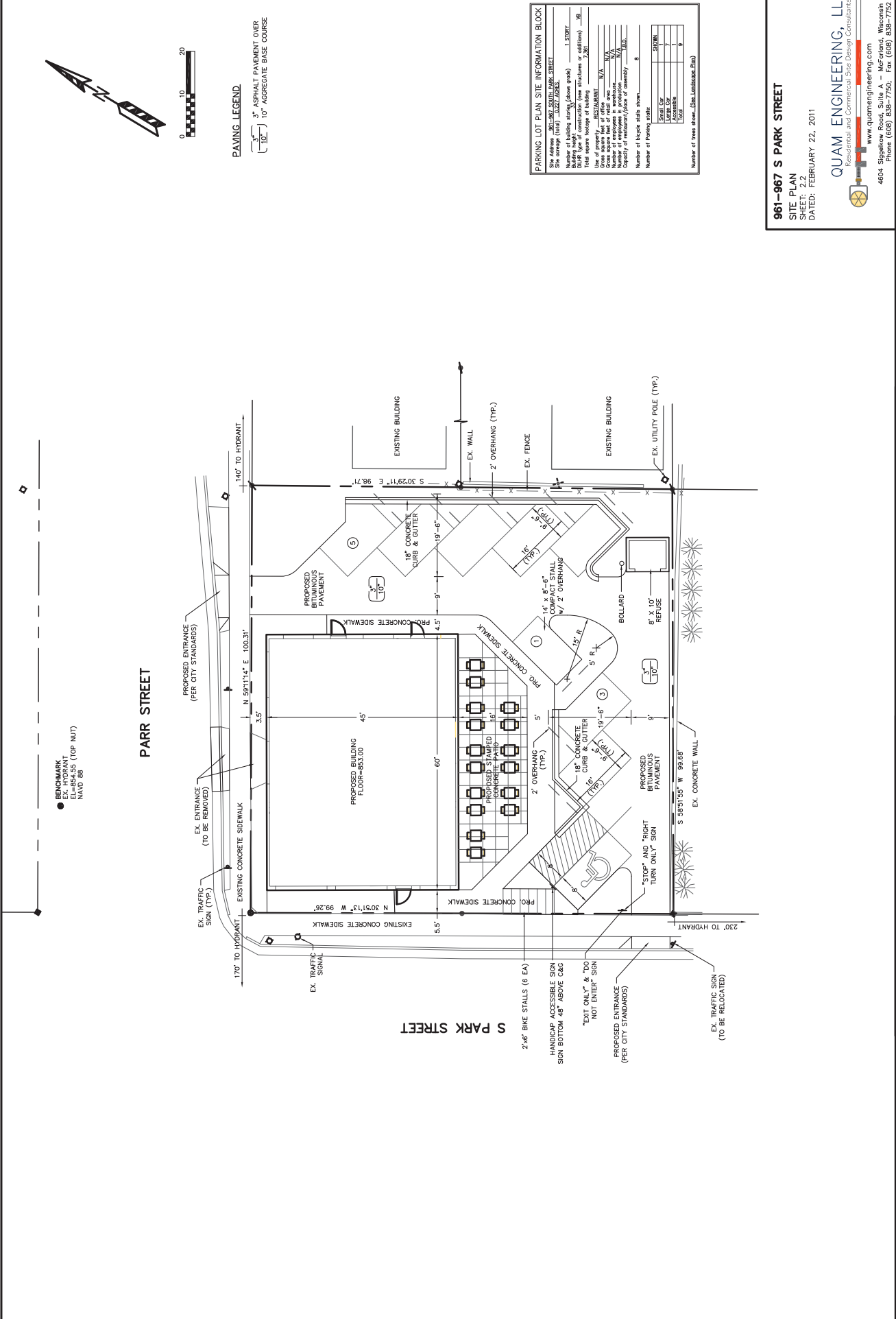


TO OBTAIN LOCATION OF PARTS FACILITIES BEFORE YOU DIG IN WISCONSIN
CALL DIGGERS HOTLINE TOLL FREE 1-800-242-8811
TRUCK FOR THE STATE: 800.274.1934
REQUIRES MIN. OF 3 WORK DAYS NOTICE BEFORE YOU EXCAVATE

961-967 S PARK STREET
GRADING AND EROSION CONTROL PLAN
 SHEET: 2.3
 DATED: FEBRUARY 22, 2011

QUAM ENGINEERING, LLC
 Residential and Commercial Site Design Consultants
 www.quamengineering.com
 4604 Sigelkow Road, Suite A - McFarland, Wisconsin 53558
 Phone (608) 838-7750





PAVING LEGEND

- 3" ASPHALT PAVEMENT OVER 10" AGGREGATE BASE COURSE

PARKING LOT PLAN SITE INFORMATION BLOCK

Site Address: 961-967 S PARK STREET

Number of parking stalls (shown above): 6

Building height (shown above): 1 STORY

Number of stories (shown above): 1

Total square footage of building (shown above): 2,700

Use of property: RESTAURANT

Street name: S PARK STREET

Grade square feet of total area: N/A

Number of employees in production: N/A

Capacity of restaurant/office of assembly: N/A

Number of bicycle stalls shown: 0

Number of parking stalls:

| | |
|--------|-------|
| Street | SHOWN |
| Access | 1 |
| Other | 1 |
| Total | 2 |

Number of trees shown (Site Landscape Data):

961-967 S PARK STREET
SITE PLAN
SHEET: 2.2
DATED: FEBRUARY 22, 2011

QUAM ENGINEERING, LLC
Residential and Commercial Site Design Consultants
www.quamengineering.com
4604 Sigelkow Road, Suite A - McFarland, Wisconsin 53558
Phone (608) 838-7750 Fax (608) 838-7752

PROJECT

NEW RETAIL LOCATON FOR BARRIQUES

961 AND 967 SOUTH PARK STREET MADISON, WI

DRAWING INDEX

- 1.1 COVER SHEET
- 2.1 EXISTING SURVEY/SITE PLAN
- 2.2 PROPOSED SITE PLAN
- 2.3 GRADING/EROSION CONTROL PLAN
- 2.4 LANDSCAPE PLAN AND DETAILS
- 2.5 LANDSCAPE SCHEDULE
- 3.1 FIRST FLOOR PLAN
- 3.2 WALL TYPES
- 3.3 SCHEDULES AND NOTES
- 3.4 INTERIOR ELEVATIONS-REFUSE ELEVATION
- 4.1 ELEVATIONS AND SECTIONS
- 4.2 ELEVATIONS
- 4.3 EXISTING ELEVATIONS
- 4.4 EXISTING ELEVATIONS
- 5.1 STRUCTURAL INFORMATION
- P. 1 CONTEXT PHOTOGRAPHS
- P. 2 CONTEXT PHOTOGRAPHS

PROJECT TEAM

ARCHITECT
BARNETT ARCHITECTURE LLC
118 N. BREEZE TERRACE, SUITE 1
MADISON, WI 53726
P. 608-233-4538
CONTACT: TODD BARNETT, ARCHITECT
email: todd@barnettarchitecture.com

CIVIL ENGINEER
QUAM ENGINEERING
SIGGLEKOW ROAD SUITE A
MCFARLAND, WI 53558
P. 608-838-7750
F. 608-838-7752
CONTACT: RYAN QUAM, PE
email: ryan@quamengineering.com

LANDSCAPE ARCHITECT
RICHARD SLAYTON, ASLA
MADISON, WI
email: rslayton@hotmail.com

STRUCTURAL ENGINEER
GUNNAR MALM AND ASSOCIATES
6402 ODANA ROAD
MADISON, WI 53719
P. 608-288-1108
F. 608-288-1109
CONTACT: GUNNAR MALM, PE
email: mal@gmaengineering.com

SURVEYOR
WILLIAMSON SURVEYING
104 A WEST MAIN STREET
WAUNAKEE, WI 53597
P. 608-255-5705
F. 608-849-9760
CONTACT: NOA PRIEVE
email: noi@RP.WI.com

email: noa@williamsonsurveying.com

CODE REFERENCES

MUNICIPALITY CITY OF MEQUON
BUILDING CODE WISCONSIN COMMERCIAL BUILDING CODE
ZONING CODE CITY OF MADISON GENERAL ORDINANCE CHAPTER 28

BUILDING DATA

1 NUMBER OF STORIES/LEVELS

AREAS - gross square footage: Informational only

LEVEL Existing SF Proposed SF
Fst 2696 2696

PROPERTY INFORMATION

PLATE OF SURVEY

Parts of Lots 22 and 23, Block 10, South Madison, located in the NW 1/4 of Section 26, T17N, R9E, City of Madison, Dane County, Wisconsin.

ZONING CODE INFORMATION

C2 ZONING CLASSIFICATION - both properties
YES PERMITTED USE
4941SF PARCEL A: 961 S. PARK STREET
4958 SF PARCEL B: 967 S. PARK STREET
BUILDING HEIGHT LIMIT
FRONT YARD SETBACK
SIDE YARD SETBACK
REAR YARD SETBACK
URBAN DESIGN COMMISSION APPROVAL DATE

STRUCTURAL INFORMATION - SEE "S" SHEETS

2000 SOIL BEARING PRESSURE PSF, ASSUMED

ALTERNATE BID INFORMATION

ALTERNATE BID NO. 1: PROVIDE

UNIT COST INFORMATION

UNIT COST NO. 1:



Barnett Architecture
118 NORTH BREEZE TERRACE
SUITE 1
MADISON, WISCONSIN 53726
608.233.4538
barnettarchitecture.com

NEW LOCATION FOR:
BARRIQUES

961 SOUTH PARK ST.
967 SOUTH PARK ST.
MADISON, WI 53715



PRELIMINARY
NOT FOR CONSTRUCTION
DRAWING ISSUE DATES
2-22-2011

1.1

This document contains confidential information. It is intended for the use of the recipient only. It is not to be distributed or used for any other purpose without the express written consent of the sender.

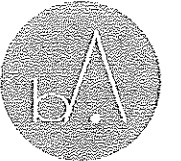
PRELIMINARY
NOT FOR CONSTRUCTION



1 AREA LOCATION PLAN

SCALE: NONE



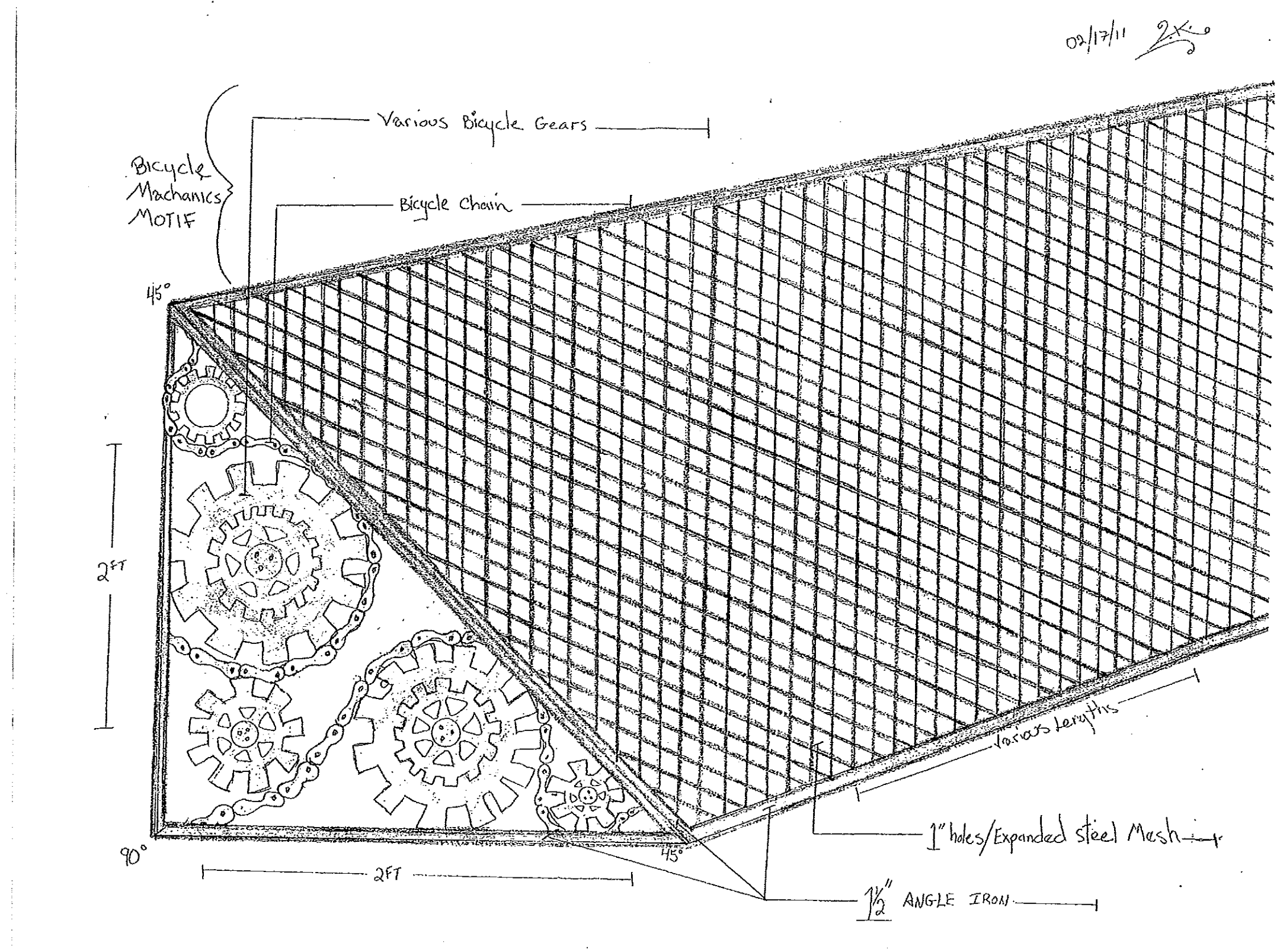


Barnett Architecture

118 NORTH BREESE TERRACE
SUITE 1
MADISON, WISCONSIN 53726
608.233.4538
barnettarchitecture.com

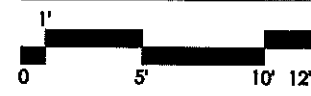
NEW LOCATION FOR:
BARRIQUES

961 SOUTH PARK ST.
967. SOUTH PARK ST.
MADISON, WI 53715



02/17/11 *[Signature]*

AWNING CONCEPT



**PRELIMINARY
NOT FOR CONSTRUCTION**

DRAWING ISSUE DATES
3-9-2011

A.1

This document contains confidential or proprietary information. Neither this document nor the information contained herein is to be used or disclosed either in whole or in part, except as authorized.