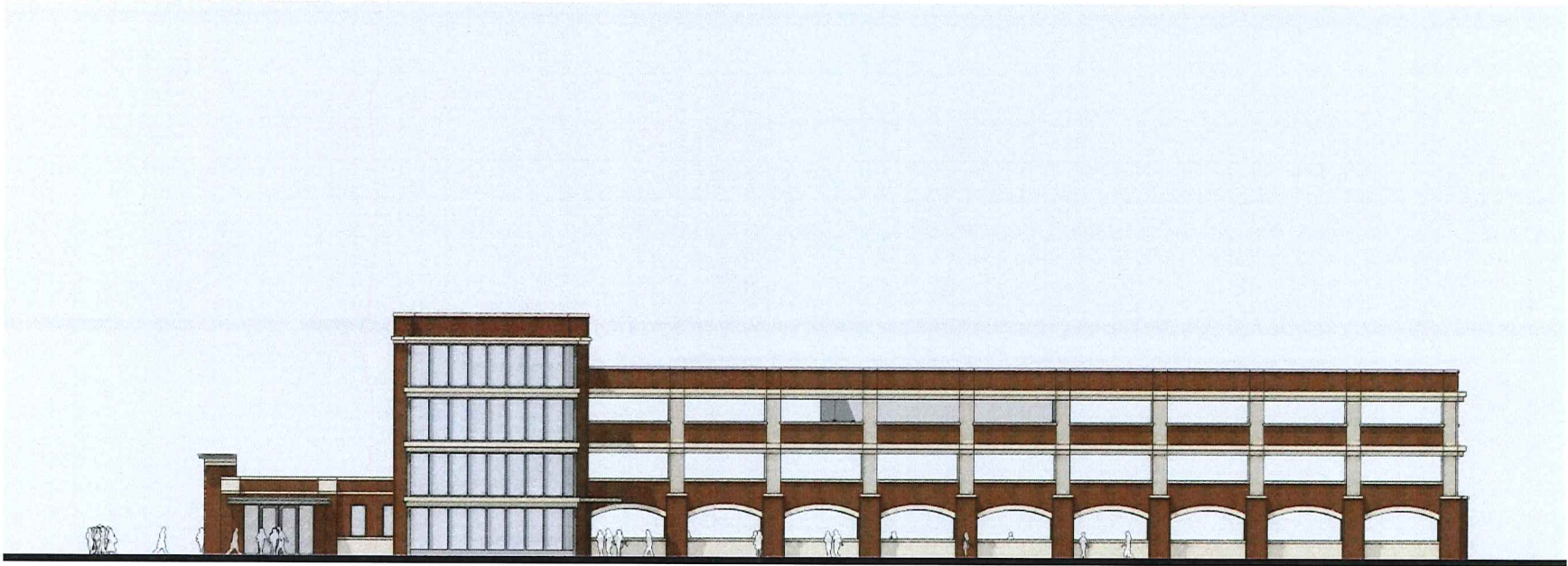


South Elevation



#8



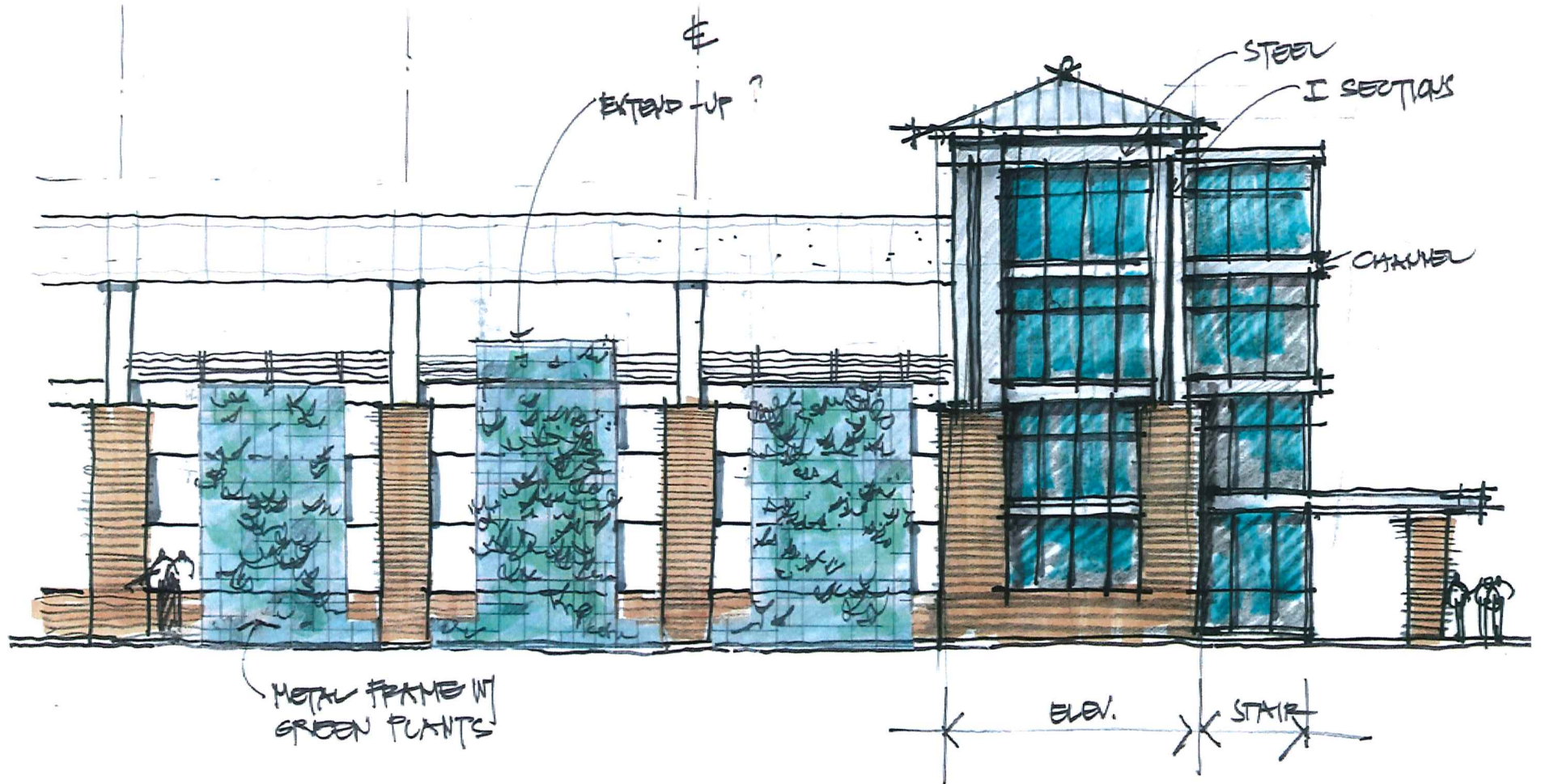
East Elevation



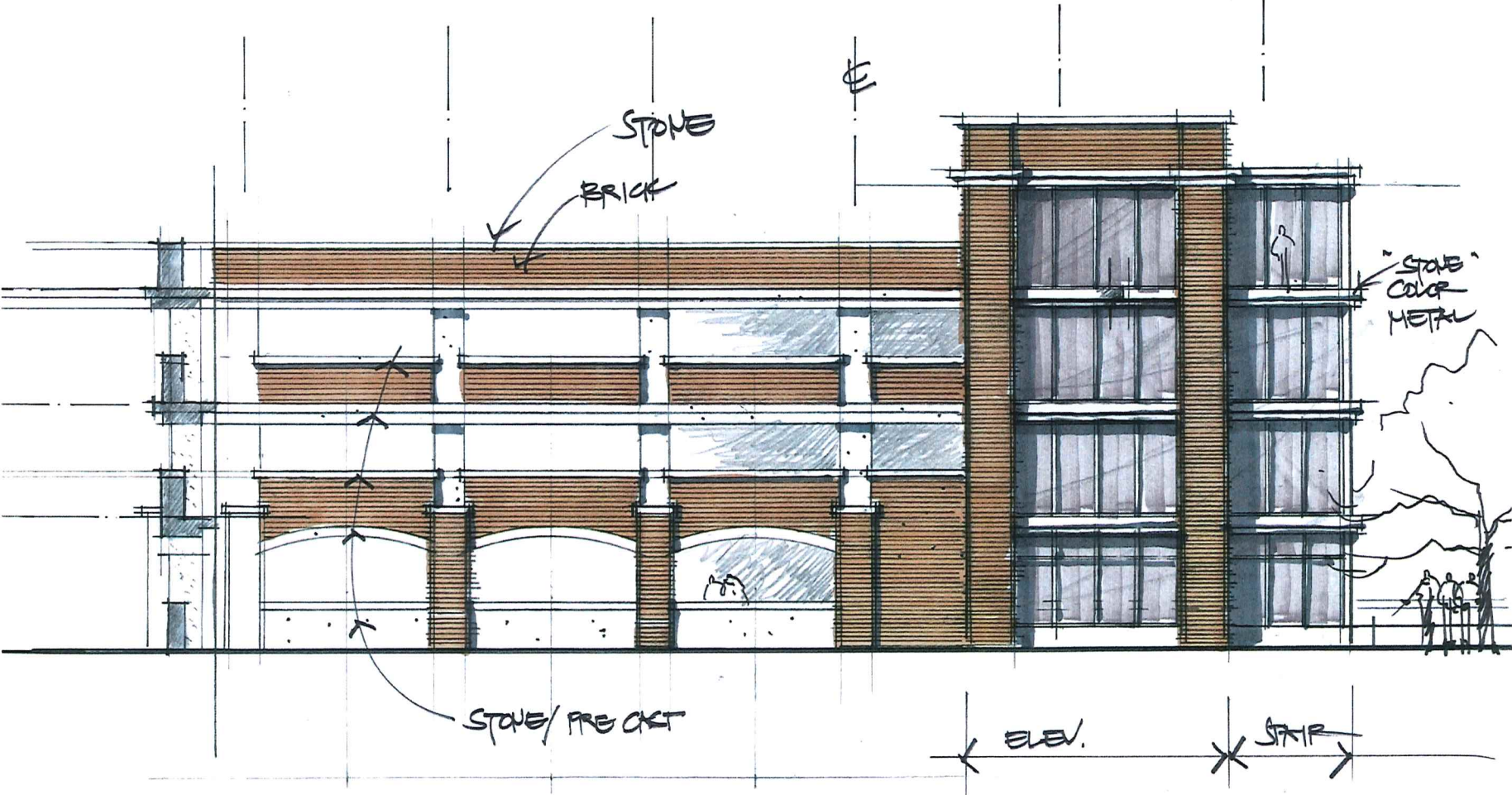
South Elevation



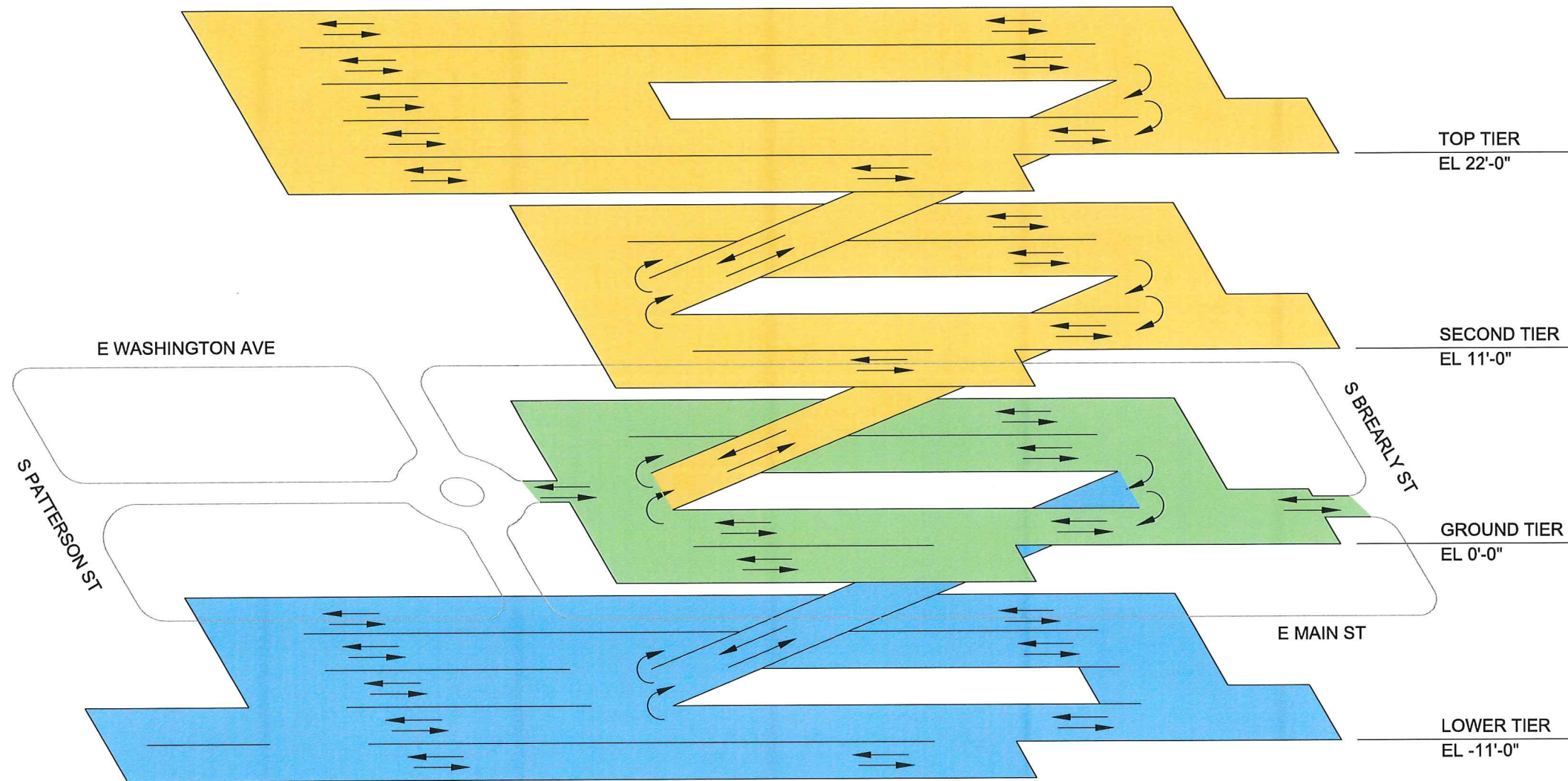
Concept Options



Concept Options



ISOMETRIC
OPTION 1



ABOVE GRADE PARKING



AT GRADE PARKING



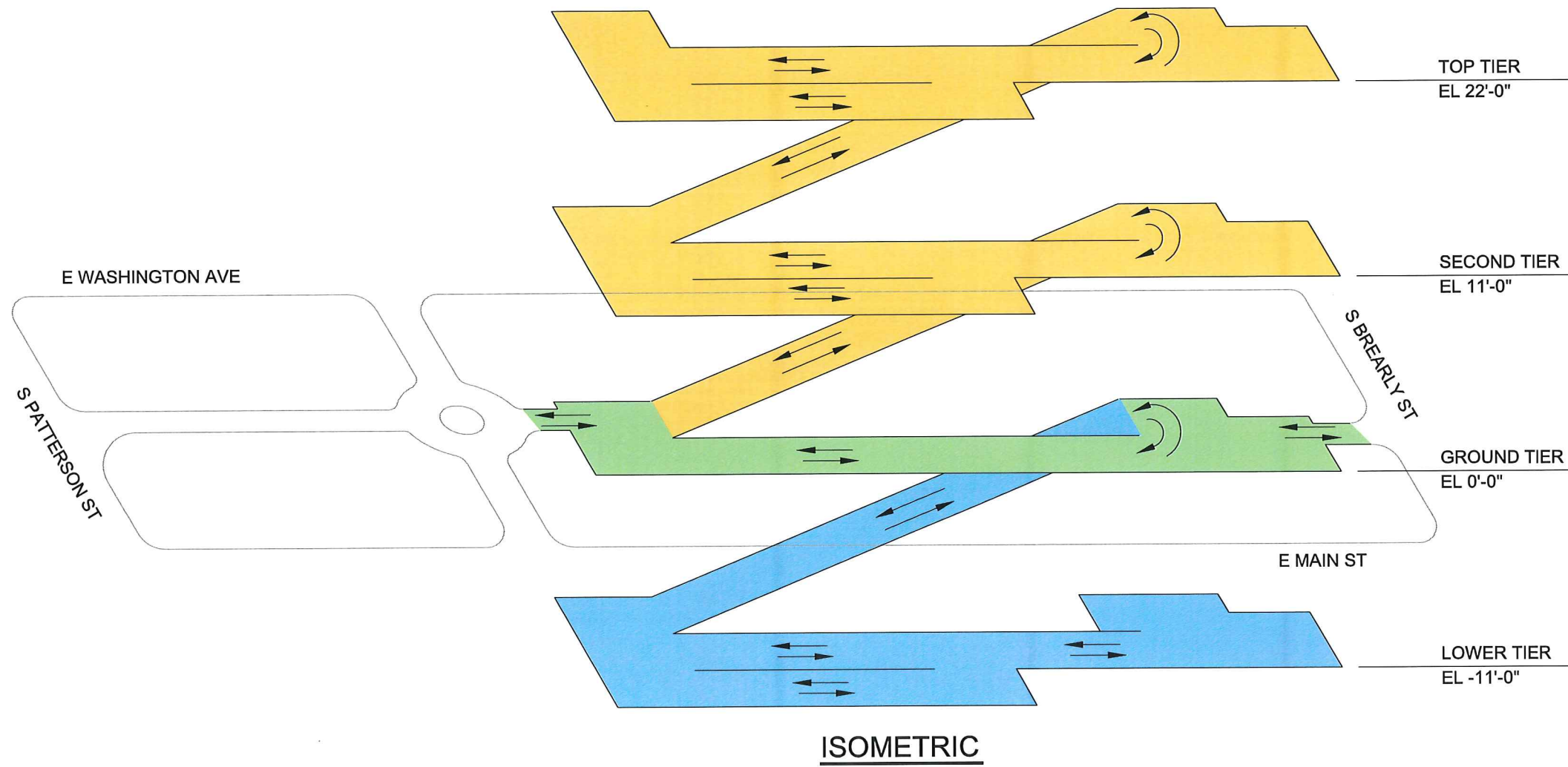
BELOW GRADE PARKING



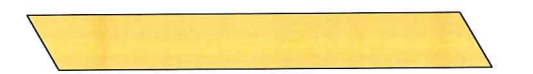
LEGEND

Scale: NTS
A-100

ISOMETRIC
OPTION 1
PHASE 1



ABOVE GRADE PARKING



AT GRADE PARKING



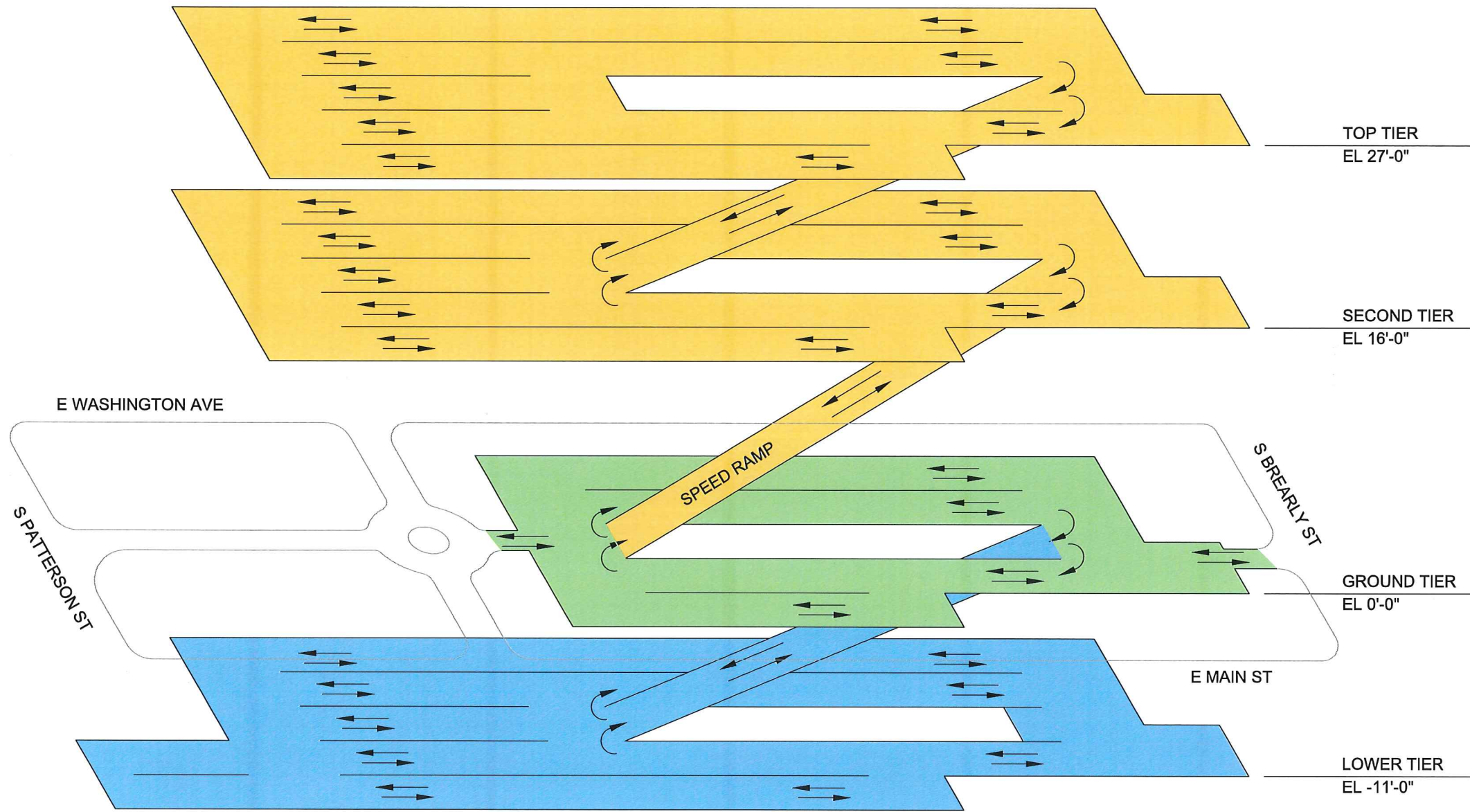
BELOW GRADE PARKING



LEGEND

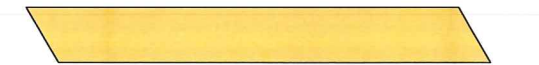
Scale: NTS
A-100A

ISOMETRIC
OPTION 2



ISOMETRIC

ABOVE GRADE PARKING



AT GRADE PARKING



BELOW GRADE PARKING



LEGEND



View looking North

KEY	TEAM MEMBERS
 Residential	Archipelago Village LLC - Owner
 Retail	Plunkett Raysich Architects, LLP - Architect
 Office	Potter Lawson, Inc. - Architect (Kleuter Building)
 Parking	Ken Saiki Design - Landscape Architect
	Oneida Total Integrated Enterprises (OTIE) - Civil Engineer
	Henneman Engineering, Inc. - Structural Engineer
	Walker Parking Consultant - Parking Consultant
	Ayres Associates - Traffic Consultant



View looking Northeast on East Washington towards the Interstate

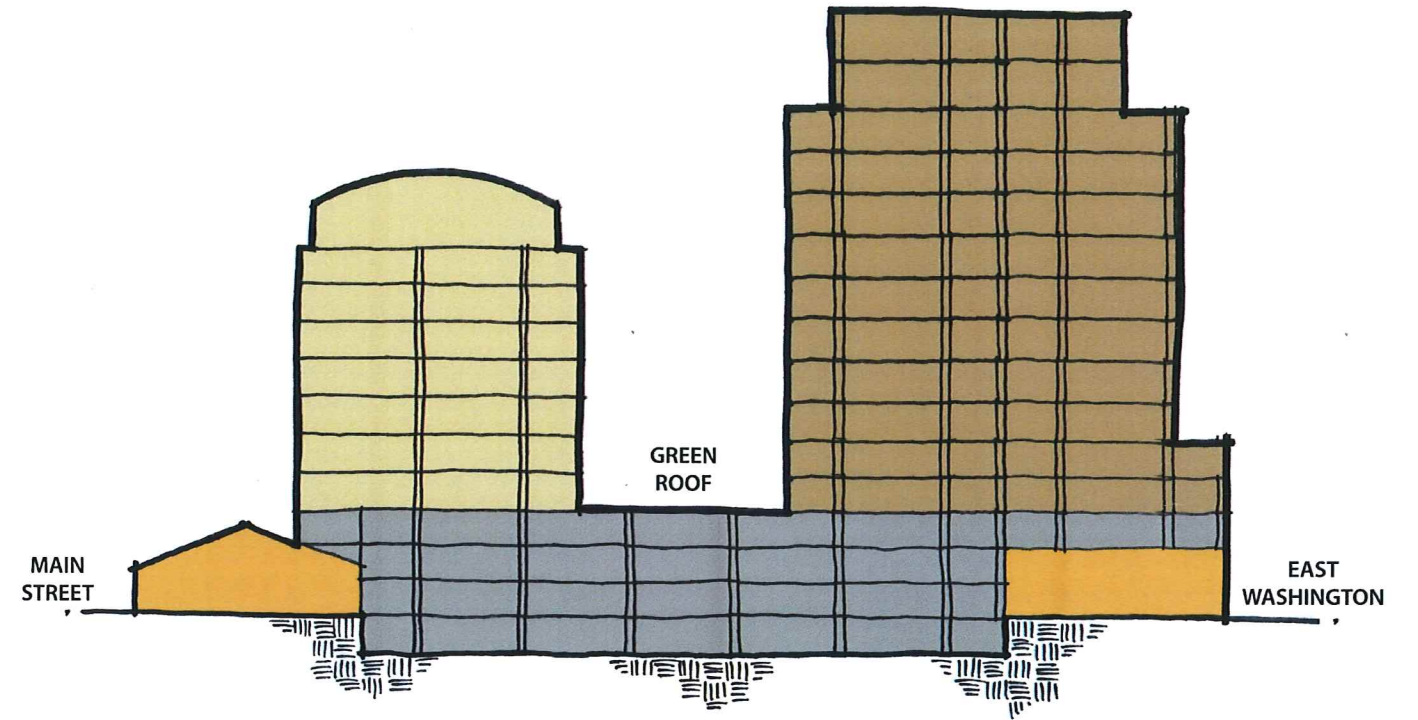
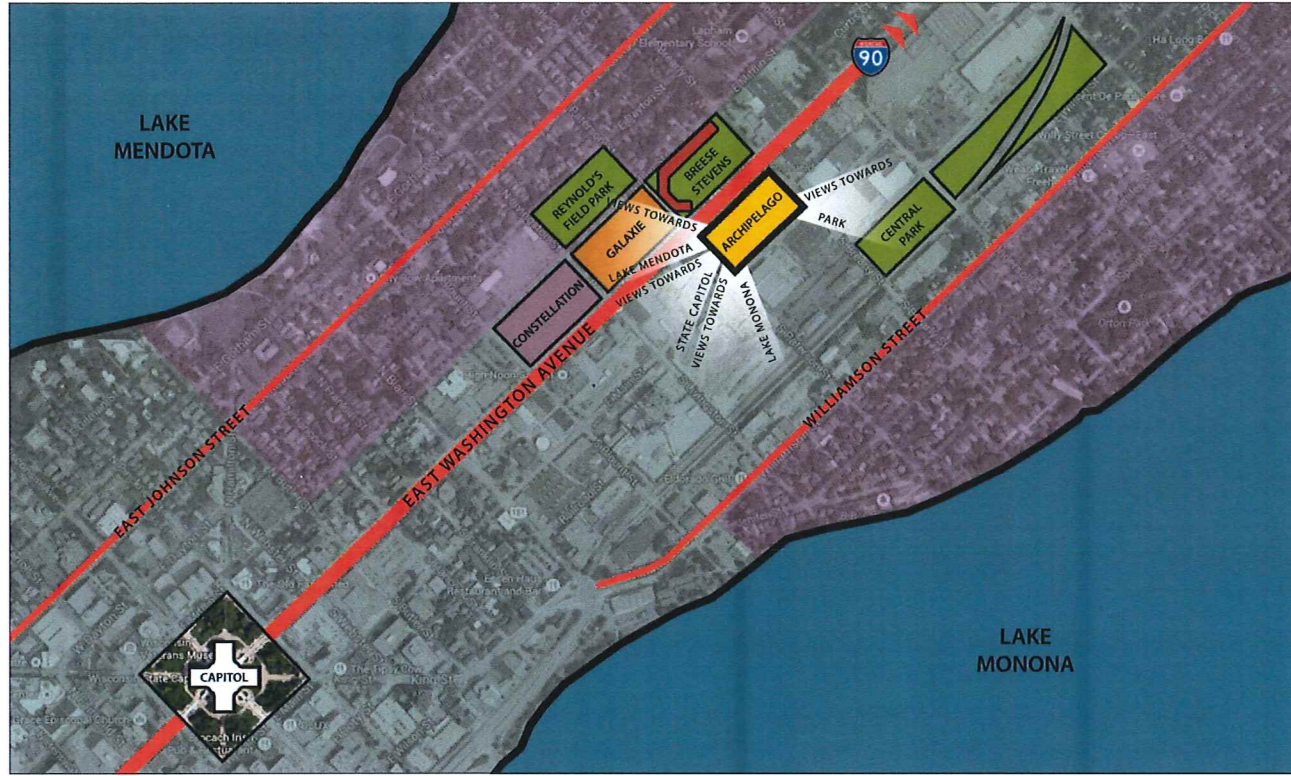


View looking Southwest on East Washington towards Capitol

©2014 Plunkett Raysich Architects, LLP - 11 September 2014 - #140060-01



©2014 Plunkett Raysich Architects, LLP - 11 September 2014 - #140060-01



Parking Section Diagram



©2014 Plunkett Raysich Architects, LLP - 11 September 2014 - #140060-01

View Corridor to State Capitol along East Washington Avenue



Street Activity on Main Street



©2014 Plunkett Raysich Architects, LLP - 11 September 2014 - #140060-01

View at Intersection of Main Street and Brearly Street Looking West



©2014 Plunkett Raysich Architects, LLP - 11 September 2014 - #140060-01

View Along Main Street Looking North